

AMENDMENT NO. 1 TO CONSULTING SERVICES AGREEMENT

(To be used only for Architectural, Engineering or Land Surveying Services.)

1. Identification of Agreement to be Amended.

- (a) Effective Date of Agreement: November 1, 2020
- (b) Agency: Contra Costa County Public Works - Airports Division
- (c) Subject: Amendment update rate sheets and add an authorized subconsultant

2. Parties. Agency, and the following named Consultant, mutually agree and promise as follows:

- (a) Consultant's Name & Address: Mead and Hunt, Inc.
1360 19th Hole Drive, Ste. 200
Windsor, CA 95492
ATTN: Jeff Leonard

- (b) Type of Business Entity: Corporation

(e.g., individual, corporation, sole proprietorship, partnership, limited liability company)

If corporation, identify state of incorporation: CA

3. Project Name, Number, & Location. On-Call Engineering, Design, & Architectural
Name & Location: As Needed

4. Amendment Date. The effective date of this Amendment to Consulting Services Agreement is July 1, 2024.

5. Amendment Specifications. The Agreement identified above is hereby amended as set forth in the Amendment Specifications attached hereto and incorporated by reference.

6. Signatures. The signatures set forth below attest the parties' agreement hereto:

AGENCY

- (a) **If Amendment is approved by Agency's governing body (required if total Payment Limit of original Agreement and Amendment exceeds \$100,000, or if original Agreement was approved by Agency's governing body):**

AGENCY, By _____ Board Chair/Designee	ATTEST: Clerk of the Board of Supervisors By _____ Deputy
---	---

- (b) **If Amendment is approved by County Purchasing Agent:**

AGENCY, By _____ County Purchasing Agent or Designee
--

APPROVALS

RECOMMENDED BY DEPARTMENT

By _____
Designee

FORM APPROVED BY COUNTY COUNSEL

By _____
Deputy County Counsel

APPROVED: COUNTY ADMINISTRATOR

By _____
Designee

AMENDMENT SPECIFICATIONS

In consideration for Mead and Hunt, Inc., to provide ongoing airport related professional design, engineering and architectural services, the rate sheet in Attachment 1 to Appendix B from 2020 will be updated with the attached rate sheet. Additionally, Attachment 1 to Appendix B is being amended to include an updated rate sheet for PLS Surveying, and an additional authorized subconsultant (Terracon Consultants, Inc) inclusive of Terracon's attached rate sheet. The total contract amount of \$1,000,000 will remain unchanged.

MEAD & HUNT, Inc.
Standard Billing Rate Schedule
For Contra Costa County On-call Services (Engineering)
Effective January 1, 2024

Standard Billing Rates

• Clerical	\$81.00 / hour
• Accounting.....	\$114.00 / hour
• Administrative Assistant	\$123.00 / hour
• Technician I	\$101.00 / hour
• Technician II.....	\$137.00 / hour
• Technician III.....	\$159.00 / hour
• Technician IV	\$168.00 / hour
• Senior Technician	\$193.00 / hour
• Engineer I.....	\$134.00 / hour
• Engineer II	\$148.00 / hour
• Engineer III.....	\$196.00 / hour
• Construction Resident Project Representative (RPR)	\$141.00 / hour
• Senior Engineer	\$232.00 / hour
• Project Engineer.....	\$254.00 / hour
• Senior Project Engineer	\$269.00 / hour
• Senior Associate	\$331.00 / hour

Expenses

- Out-Of-Pocket Direct Job Expenses..... @ cost
Such as reproductions, sub-consultants / contractors, etc.

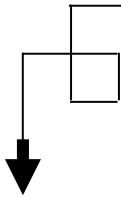
Travel Expense

- Company or Personal Car Mileage..... \$ IRS rate / mile*
** Rates will be charged at Current IRS rate*
- Air and Surface Transportation..... @ cost
- Lodging and Sustenance

Billing and Payment

- Travel time is charged for work required to be performed out-of-office.
- Invoicing is on a monthly basis for work performed. Payment for services is due within 30 days from the date of the invoice.

This schedule of billing rates is effective January 1, 2024, and will remain in effect until December 31, 2024, unless unforeseen increases in operational costs are encountered. We reserve the right to change rates to reflect such increases.



PLS Surveys, Inc.
Email jmb.pls2@gmail.com

428 Alice Street, Suite 132
Oakland, CA 94607
510-2610900

2024 - RATE SCHEDULE

Field:

One-man \$261.00

Two-man** \$334.00

A 4-hour minimum applies to the above rates.

Office:

	2024
Principal-in-Charge Project Manager	\$231.00
Land Surveyor (Field Chief)	\$182.00
Survey Technician (Office)	\$128.00
AutoCAD/Drafter	\$159.00
Clerical/Delivery (In-House)	\$115.00

**The two-man crew rate is our standard rate used for most land surveys. These rates are subject to change on an annual basis. Time spent over 8 hours per day and on Saturdays will be charged at 1.5 times the hourly rate. All field personnel charges are portal to portal. Professional employees will not be charged at premium charge rates for overtime work.

These rates include RTK GPS, robotic total stations, digital levels and supplies.

Terracon Hourly Rate Schedule (Prevailing Wage)

Geotechnical / Construction Material Testing & Inspection Services

Principal Engineer	\$ 280/Hour
Senior Engineer	\$ 255/Hour
Project Engineer/Project Manager/Project Geologist	\$ 225/Hour
Staff Engineer	\$ 155/Hour
Field Engineer	\$ 140/Hour
Staff/Field Engineer - Prevailing Wage	\$ 180/Hour
AC/Soils Inspector	\$ 170/Hour
ACI Inspector	\$ 175/Hour
ICC Inspector	\$ 175/Hour
AWS Welding Inspector	\$ 185/Hour
Field Report Preparation	\$ 115/Each
Pad Certification Report	\$ 400/Each
Final Letter	\$ 400/Each

Hot Mix Asphalt (HMA) Services

HMA Design Review	\$ 250/Each
Quality Control Manager	\$ 185/Hour
Quality Control Plan	\$ 840/Each

Non-Destructive Testing

High Strength Bolt (HSB) Testing (Calibrated Torque Method)	\$ 185/Hour
Bolt Pull/Load Testing	\$ 170/Hour
Rebar Pull Testing	\$ 170/Hour
Ceiling Wire Pull Testing	\$ 170/Hour
NDT GPR	\$ 170/Hour
Pachometer	\$ 150/Hour

Hazardous Material Services

Certified Industrial Hygienist (CIH)	\$ 275/Hour
Senior Project Manager	\$ 225/Hour
Professional Geologist	\$ 235/Hour
Certified Safety Professional	\$ 225/Hour
Project Manager	\$ 185/Hour
Field Geologist (soil logging) - Prevailing Wage	\$ 180/Hour
Senior Industrial Hygienist / Certified Asbestos Consultant	\$ 150/Hour
Industrial Hygienist / Certified Site Surveillance Technician	\$ 140/Hour
Administrative	\$ 110/Hour
Daily Rate for Industrial Hygienist	Request Quote

Geophysical Services

Seismic Refraction 1D-3D, Seismic Source DAQlink III, 24 Channel Acquisition System	\$ 290/Hour
Multi-Channel Analysis of Surface Waves 1D-3D, Seismic Source DAQlink III, 24 Channel Acquisition System	\$ 290/Hour
Ground Penetrating Radar, special antennas may warrant an additional charge	\$ 235/Hour
In-situ Soil Resistivity Testing, Mini-res tester	\$ 180/Hour
Post Processing and Analysis	\$ 170/Hour

Geotechnical Exploration/Drilling Services

Drilling and Sampling (CME 75/Dietrich D50) - day rate, Prevailing wage	\$415/Hour
Drilling and Sampling (CME 75/Dietrich D50) - night rate, Prevailing wage	\$490/Hour



Hand-Auger Soil Sample (1-person crew), Prevailing wage	\$200/Hour
Drilling Supplies and Misc.	Cost + 20%
Coring 1 Man Crew w/Trailer	\$ 185/Hour
Bit Charges per 6" max core length, 4" max core diameter	\$ 34/Each
Support Truck not including mileage (500-gallon water tank)	\$ 250/Day
2"x6" Stainless-Steel Tubes and Caps, recycled	\$ 10/Each
Permitting Fees	Cost + 20%
Bailers (disposable)	\$ 10/Each
Sampling Supplies (gloves, water, rope, etc.)	\$ 25/Day
Photo-ionization Detector (PID)	\$ 160/Day
Water Level Indicator	\$ 30/Day
ph/Conductivity/Temp Meter	\$ 50/Day
Dissolved Oxygen Meter	\$ 50/Day
Steam Cleaner	\$ 100/Day
Cement Pump and Mixer	\$ 100/Day
Drums	\$ 95/Each
Laboratory Analysis	Cost + 20%

Soils

Atterberg Limit D4318	\$ 235/Each
Permeability Falling Head	\$ 300/Each
Specific Gravity Determination ASTM D854	\$ 100/Each
C136 Sieve Analysis Fine	\$ 195/Each
Wash 200 D1140	\$ 115/Each
Hydrometer ASTM D422	\$ 300/Each
4" mold AASHTO T99, ASTM D698	\$ 400/Each
6" mold AASHTO T99, ASTM D698	\$ 400/Each
4" mold AASHTO T180, ASTM D1557	\$ 400/Each
6" mold AASHTO T180, ASTM D1557	\$ 400/Each
CTM 216 Relative Compaction, Untreated and Treated Soils	\$ 240/Each
CTM 301 R-Value Untreated Samples	\$ 380/Each
CTM 301 R-Value Treated Samples	\$ 380/Each
pH Test	\$ 100/Each
pH-Lime Determination Test	\$ 650/Each
Resistivity and pH Test CTM 643	\$ 240/Each
Swell Test (Expansion Index) ASTM D4829	\$ 445/Each
CTM 373 Unconfined Compressive Lime treated Specimen	\$ 340/Each
Compressive Strength Cement	\$ 340/Each
Compressive Strength Lime	\$ 340/Each
Percent Lime/Cement Design, based on compressive strength (includes pH Lime Determination and Unconfined Compressive Strength)	\$ 5,500/Each
Unconfined Compression Test ASTM D2166	\$ 180/Each

Masonry Brick/Block/Tile

Compression Tests on Core Specimens (includes prep) ASTM C42	\$ 85/Each
Shear Tests Masonry Core	\$ 155/Each
Compression Test Grout Molds	\$ 50/Each
Compression Test Mortar Cylinder	\$ 50/Each
Compression 2"x4" Cylinder Molds	\$ 50/Each
Compression Masonry Prism (2-block, mortared & grouted)	\$ 230/Each
Compression Test Masonry Unit 8"x8"x16"	\$ 230/Each
Masonry Absorption Tests ASTM C140	\$ 150/Each
Masonry Shrinkage (Volume Change)	\$ 220/Each
Masonry Lineal Shrinkage with Absorption	\$ 300/Each

Masonry Shrinkage with Absorption and Compression	\$ 460/Each
---	-------------

Concrete

Concrete Mix Design Review	\$ 250/Each
Additional Concrete Mix Design (using same materials)	\$ 245/Each
Concrete Mix Design with Trial Batch & Concrete Cylinder Compression Tests	Request Quote
Floor Flatness Testing	\$ 185/Hour
Floor Flatness Report	\$ 450/Each
Unit Weight Fireproofing	\$ 100/Each
Compression Test Concrete Cylinders (same price for untested "hold" specimens)	\$ 45/Each
Flexural Strength, Concrete Beams, 6"x6"x24 ASTM C78	\$ 155/Each
Cylinder Molds (6"x12")	\$ 10/Each
Cement Content of Hardened Portland Cement Concrete ASTM C85	Request Quote
Shrink Bar Testing (3 bars per set) ASTM C157	\$ 460/Set
Compression Tests on Core Specimens (includes prep) ASTM C42	\$ 120/Each
Calcium Chloride Moisture Test Kit (includes calculations)	\$ 100/Each

Hot Mix Asphalt (HMA)

Job Mix Formula (Reduced Rate for Multiple JMF's)	Request Quote
CTM 202 Sieve Course Agg	\$ 165/Each
CTM 202 Sieve Fine Agg	\$ 165/Each
CTM 202 Sieve Ignition Sample	\$ 185/Each
CTM 202 Batch Plant Gradation Report	\$ 100/Each
CTM 204 Plasticity Index	\$ 205/Each
CTM 205 Determining % Crushed Particles	\$ 230/Each
CTM 206 Bulk SpG & Absor Coarse Agg	\$ 100/Each
CTM 207 Bulk SpG (SDD) Fine Agg	\$ 120/Each
CTM 211 LA Rattler	Request Quote
CTM 214 Sodium Sulfate Soundness (per Sieve)	\$ 180/Each
CTM 217 Sand Equivalent	\$ 150/Each
CTM 226 Moisture Content of Aggregates by oven drying	\$ 80/Each
CTM 227 Cleanness Coarse Agg	\$ 240/Each
CTM 229 Durability Index	\$ 195/Each
CTM 234 - AASHTO T304 Fine Angularity	\$ 240/Each
CTM 235 - ASTM D4791 Flat and Elongated Particles	\$ 220/Each
CTM 303 Kc & Kf determination	\$ 340/Each
CTM 304 AC Sample Preparation	\$ 130/Each
CTM 304 AC Sample Preparation with Lime Treat	\$ 155/Each
CTM 308 Bulk Spec Grav Bit Mix (Cores and Briquettes)	\$ 60/Each
CTM 309 Theo Spec Gav Bit Mix	\$ 215/Each
CTM 366 Stabilometer Value (Set of 3)	\$ 340/Each
CTM 370 Moisture Content of Bit. Mix by Microwave	\$ 80/Each
CTM 371 Tensile Strength Ratio Lab Mix	\$ 2,200/Each
CTM 371 Tensile Strength Ratio Lab Mix with Lime Treat	\$ 2,300/Each
CTM 371 Tensile Strength Ratio Field Mix	\$ 1,800/Each
CTM 382 Ignition Furnace Asphalt Content	\$ 190/Each
CTM 382 Ignition Furnace Calibration (1 per new source)	\$ 450/Each
CTM 382 Ignition Furnace Calibration with lime	\$ 550/Each
LP-1 Theo Max SpG Mix with Dif AC Cont	\$ 190/Each
LP-2, 3, & 4 - HMA Volumetrics (VMA, VFA, DP) Calculations Report	\$ 120/Each
LP-10 Sampling and Testing CRM	\$ 240/Each
ASTM D2974 Organic Matter	\$ 110/Each
ASTM D5334 Thermal Resistivity	\$ 660/Each

Marshall Mix Design

Marshall Mix Design	Request Quote
ASTM D1559 Stability & Flow	\$ 140/Each
ASTM D1075 Immersion & Compression Retained Strength	\$ 140/Each
ASTM D2726 Unit Weight	\$ 90/Each
ASTM D2172 Extraction	\$ 340/Each
ASTM D2172 Extraction with Gradation	\$ 390/Each
ASTM D2041, D2172 Max. Specific Gravity of Bituminous Mix.	\$ 180/Each

Aggregates

ASTM C88 Sodium or Magnesium Sulphate Soundness (per sieve size)	\$ 180/Each
ASTM C40 Injurious Impurity Matter	\$ 105/Each
ASTM C29 Unit Weight (aggregate)	\$ 110/Each
CTM 212 Unit Weight (aggregates)	\$ 110/Each
CTM 217 Sand Equivalent Test	\$ 150/Each
C128 Specific Gravity, Fine	\$ 150/Each
C127 Specific Gravity, Coarse	\$ 120/Each
C535 Los Angeles Rattler Test (500 revolutions)	Request Quote
CTM 227 Cleanness Value, Coarse Aggregate	\$ 240/Each
CTM 229 Durability Index: <i>Fine & Coarse Aggregate</i>	\$ 195/Each
C142 Percent Friable Particles	\$ 195/Each
Cal Trans Class II Aggregate Base Conformance Test (R-Value, Gradation, SE, Durability)	\$ 975/Each

Structural Steel

Tensile & Bend Tests:	
Reinforcement Steel Tensile & Bend <5	\$ 165/Each
Reinforcement Steel Tensile & Bend 6 to 9	\$ 195/Each
Reinforcement Steel No. 10 and larger	\$ 235/Each
High-strength Bolt, Nut & Washer Testing	\$ 420/Set
Rockwell Hardness Test	\$ 120/Each

Welder Qualification & Weld Procedure Qualifications

Weld Procedure Qualifications	\$ 1050/Each
Welder Qualification Plate Groove Weld- 1G, 2G, 3G, 4G	\$ 160/Each
Welder Qualification Pipe Groove Weld - 1G, 2G, 5G, 6G, 6GR	\$ 265/Each
Welder Qualification Plate Fillet Weld - 1F, 2F, 3F, 4F	\$ 105/Each
Welder Qualification Pipe Fillet Weld - 1F, 2F, 4F, 5F	\$ 125/Each
WPS Test Plate (set)	\$ 125/Each
WPS Test Pipe (set)	\$ 135/Each

Asbestos, Lead + PCB Sample Analyses

PLM Bulk (Standard Turnaround)	\$ 20/Each
PCM Air (Standard Turnaround)	\$ 20/Each
TEM Air (Standard Turnaround)	\$ 125/Each
Lead - Air, Paint, Wipe by Flame AA (Standard Turnaround)	\$ 20/Each
PLM Point Count - 400-pt. (Standard Turnaround)	\$ 75/Each
PCB Bulk (Standard Turnaround)	\$ 110/Each
PCB Bulk with Silica Gel Bench Column Cleanup (Standard Turnaround)	\$ 170/Each

Mold & Fungus Sample Analyses Direct Microscopy (Total - Viable & Non-Viable)

Air-O-Cell	\$ 70/Each
Bulk, Tape Lift, Swab	\$ 70/Each

Other Environmental Sample Analyses

Cost+ 20%

Geotechnical Soils & Aggregates

Direct Shear Test:

FAST (Cohesionless)	\$ 300/Point
SLOW (Cohesive)	\$ 375/Point

Triaxial Compression Test

Unconsolidated Undrained Triax D2850	\$ 210/Each
Consolidated Undrained Triax D4767	\$ 410/Each
Consolidated - Drained	\$ 450/Each
Consolidated - Undrained with Pore Pressure Measurements	Request Quote

Consolidation Test:

Swell Only	\$ 275/Each
Consolidation without Time Rate	\$ 650/Each
Consolidation with Time Rate, per load increment (additional charge)	\$ 130/Each

Additional Fees

Mileage	\$1.15/Mile
Rental Equipment	Cost + 20%
Miscellaneous	Cost + 20%

* Mileage only. Personnel time will be charged from portal to portal.

- Support Services, Equipment Rental, Supplies, Per Diem, and Subcontractor Costs will be billed as direct cost plus 15% profit.
- Time will be charged in 2, 4, and 8-hour increments, including portal-to-portal travel from our Concord, CA office and laboratory. Time worked more than 8 hours per day, night shifts, and Saturdays will be charged at 1.5 times the hourly rate. Time worked on Holidays, Sundays, Saturdays after 8 hours, and weekdays after 12 hours will be charged at two (2) times the hourly rate.