

# Artificial Intelligence Administrative Bulletin

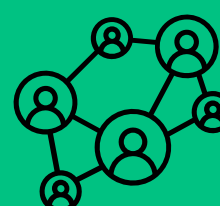


# Our Proposed Approach to AI: AI Admin Bulletin



## Enable & Support

- Facilitate department usage and mitigate shadow AI
- Ensure ethical use of AI, responsible adoption by understanding risk, and recognize valid use cases.



## Data Protections & Usage

- Explicit protections of sensitive data
- Transparency with usage of AI and associated data.



## Influence of Gen AI

- Processes and decisions may be influenced by AI generated content.
- Thus, AI generated content must be fair, accurate, and verified, with minimal bias.

# Accompanying IT Vendor Security Standards

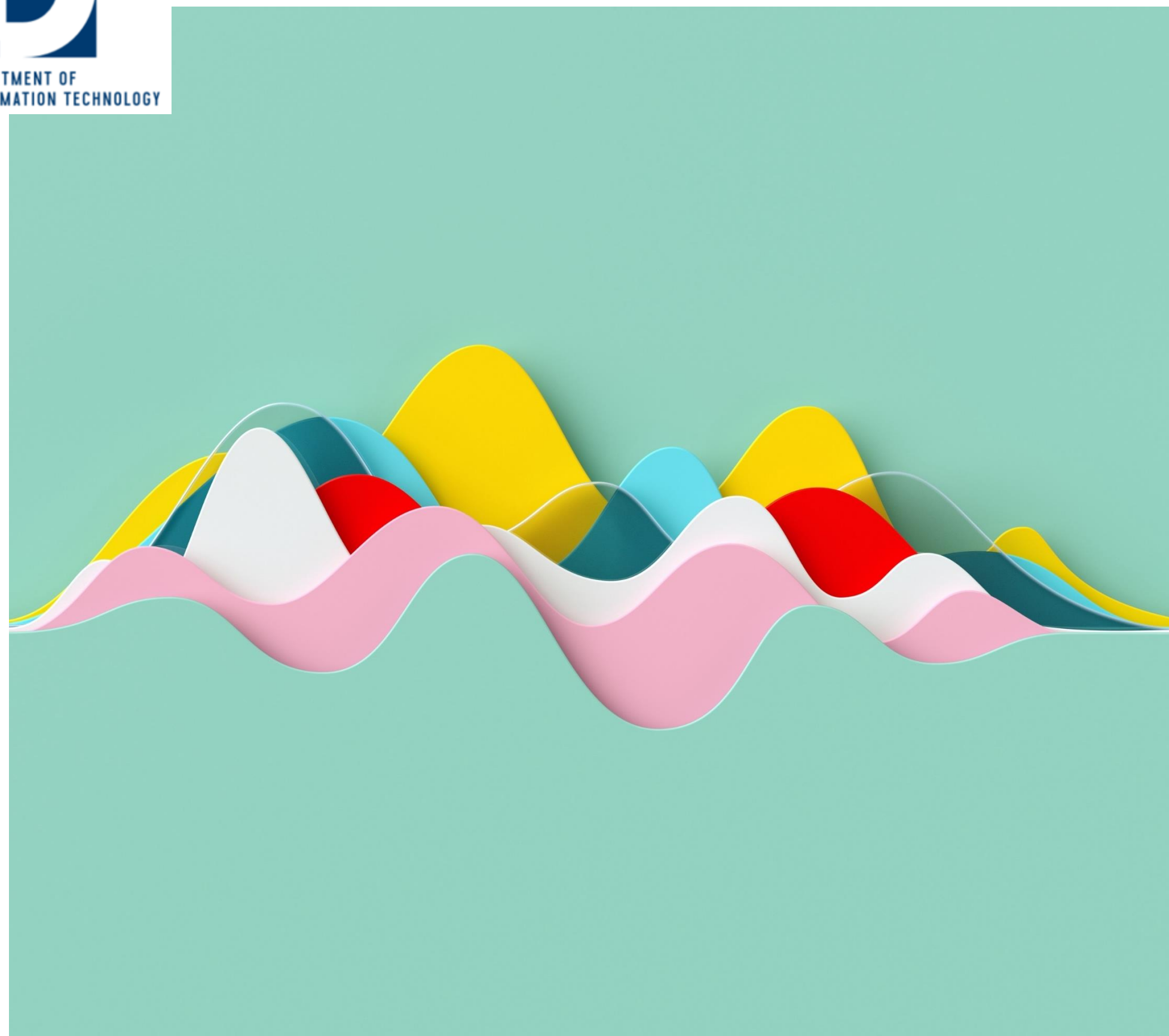
- ❖ Minimum requirements for IT Vendor's security posture.
- ❖ Establishes requirements for sustained compliance, monitoring, and communications.



# Employee Upskilling and Training



- Our people are crucial for mitigating bias and data leaks, preparing them for this change is integral to the successful adoption of new AI tools and systems.
- It is essential we prepare our County staff with training to learn how to engage with these new tools efficiently and appropriately.
- While most County staff already receive some form of AI training through our security awareness training, this policy will ensure consistent training across the County.



# Thank You!

## Questions from the committee?