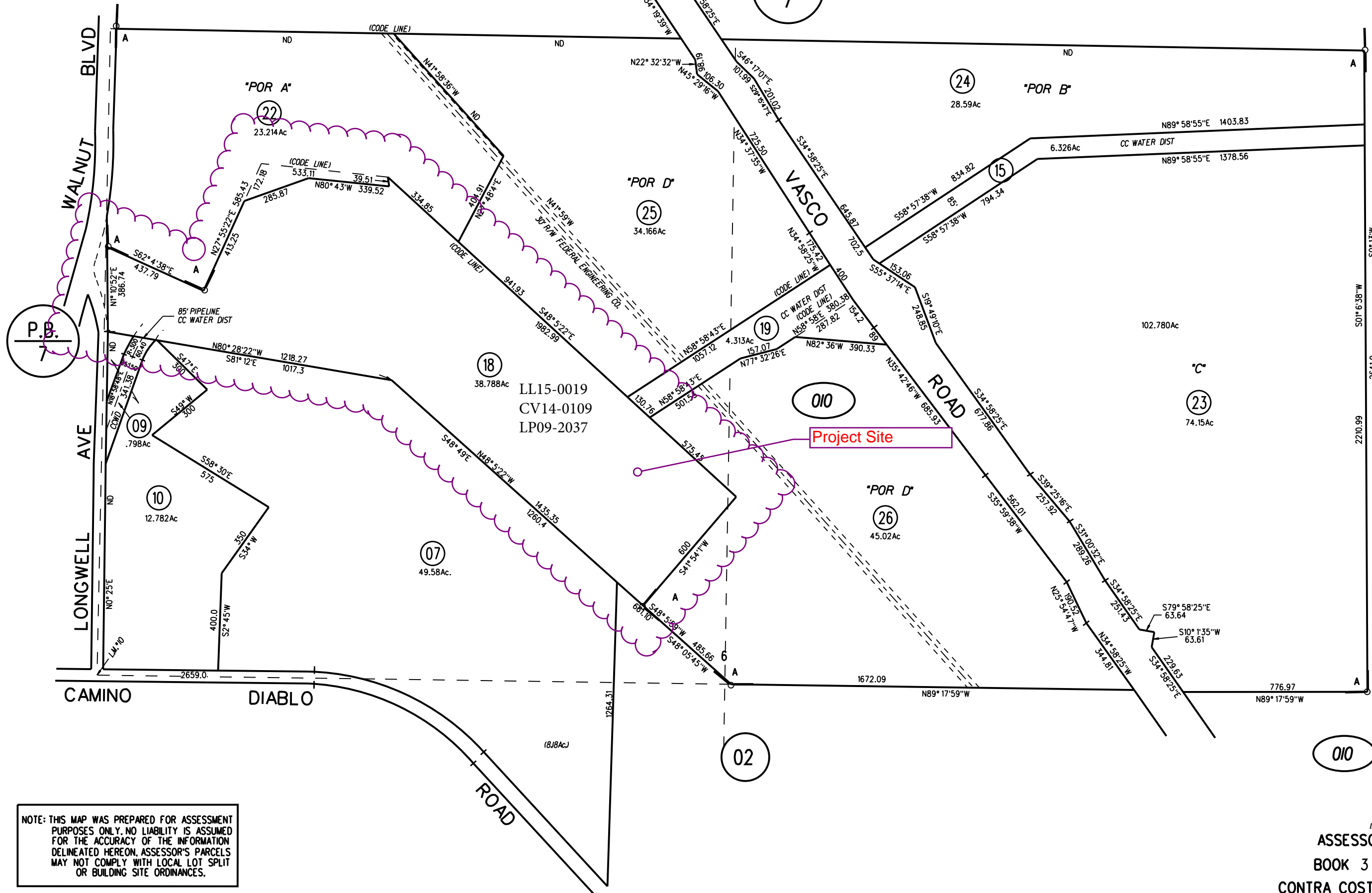


P.B.
7

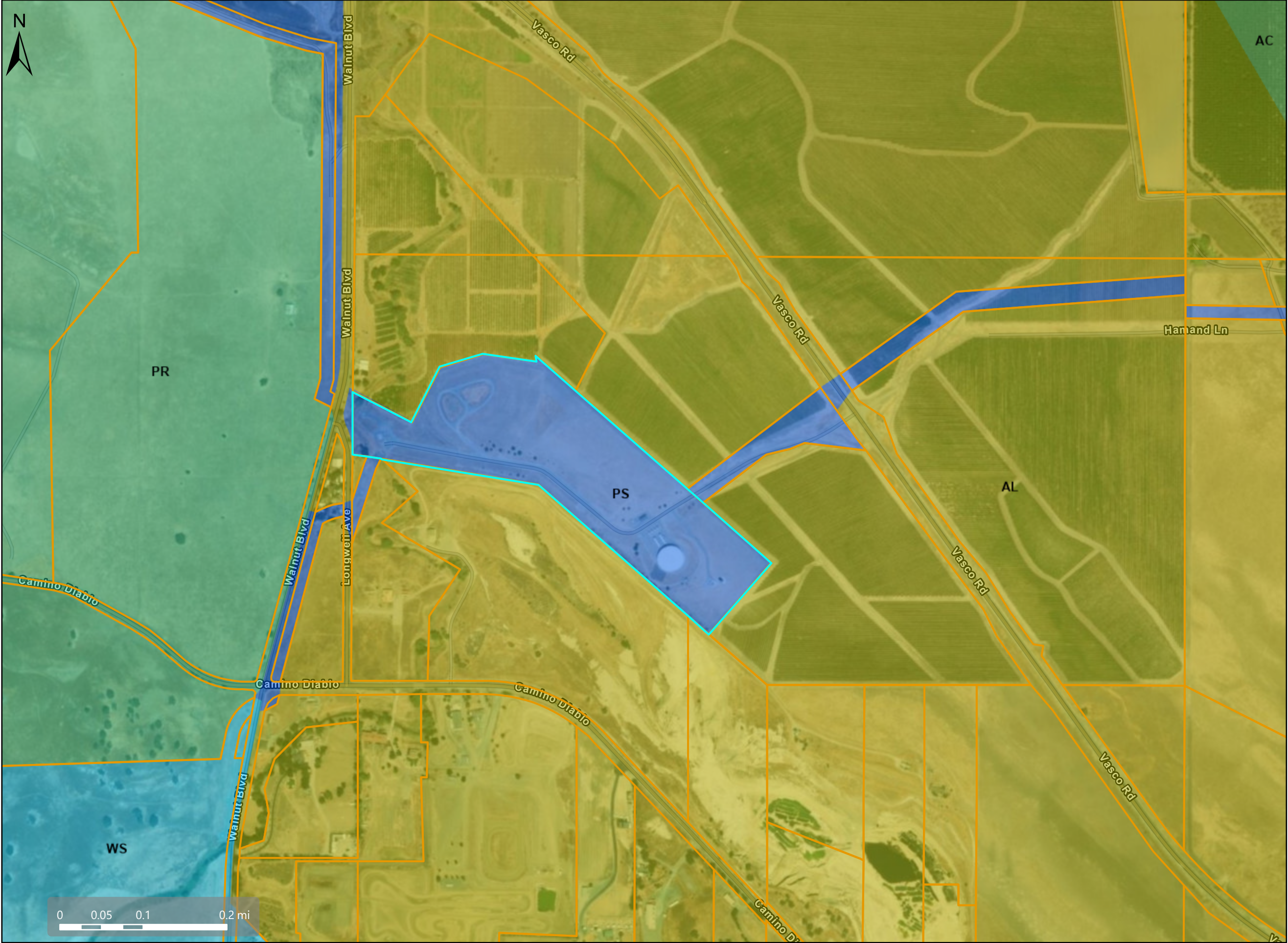
1"=400'



NOTE: THIS MAP WAS PREPARED FOR ASSESSMENT PURPOSES ONLY. NO LIABILITY IS ASSUMED FOR THE ACCURACY OF THE INFORMATION DELINEATED HEREON. ASSESSOR'S PARCELS MAY NOT COMPLY WITH LOCAL LOT SPLIT OR BUILDING SITE ORDINANCES.



General Plan: Public/Semi-Public (PS)



Map Legend

- Assessment Parcels
- General Plan
 - PS (Public/Semi-Public)
 - PR (Parks and Recreation)
 - AL (Agricultural Lands) 5 Acre Minimum Parcel Size
 - AC (Agricultural Core) 40 Acre Minimum Parcel Size
 - WS (Watershed)



This map is a user generated, static output from an internet mapping application and is intended for reference use only.
Data layers that appear on this map may or may not be accurate, current, or otherwise reliable.
THIS MAP IS NOT TO BE USED FOR NAVIGATION.
CCMap is maintained by Contra Costa County Department of Information Technology, County GIS.
Data layers contained within the CCMap application are provided by various Contra Costa County Departments.
Please direct all data inquiries to the appropriate department.
Spatial Reference
PCS: WGS 1984 Web Mercator Auxiliary Sphere
Datum: WGS 1984



Zoning: Agricultural Preserve (A-4)



Map Legend

Assessment
Parcels

Zoning

ZONE_OVER

- A-2 (General Agriculture)
- A-3 (Heavy Agriculture)
- A-4 (Agricultural Preserve)
- A-40 (Exclusive Agriculture)



This map is a user generated, static output from an internet mapping application and is intended for reference use only.
Data layers that appear on this map may or may not be accurate, current, or otherwise reliable.
THIS MAP IS NOT TO BE USED FOR NAVIGATION.
CCMap is maintained by Contra Costa County Department of Information Technology, County GIS.
Data layers contained within the CCMap application are provided by various Contra Costa County Departments.
Please direct all data inquiries to the appropriate department.
Spatial Reference
PCS: WGS 1984 Web Mercator Auxiliary Sphere
Datum: WGS 1984



Aerial Photo



Map Legend

- Assessment
- Parcels



This map is a user generated, static output from an internet mapping application and is intended for reference use only.
Data layers that appear on this map may or may not be accurate, current, or otherwise reliable.
THIS MAP IS NOT TO BE USED FOR NAVIGATION.
CCMap is maintained by Contra Costa County Department of Information Technology, County GIS.
Data layers contained within the CCMap application are provided by various Contra Costa County Departments.
Please direct all data inquiries to the appropriate department.
Spatial Reference
PCS: WGS 1984 Web Mercator Auxiliary Sphere
Datum: WGS 1984