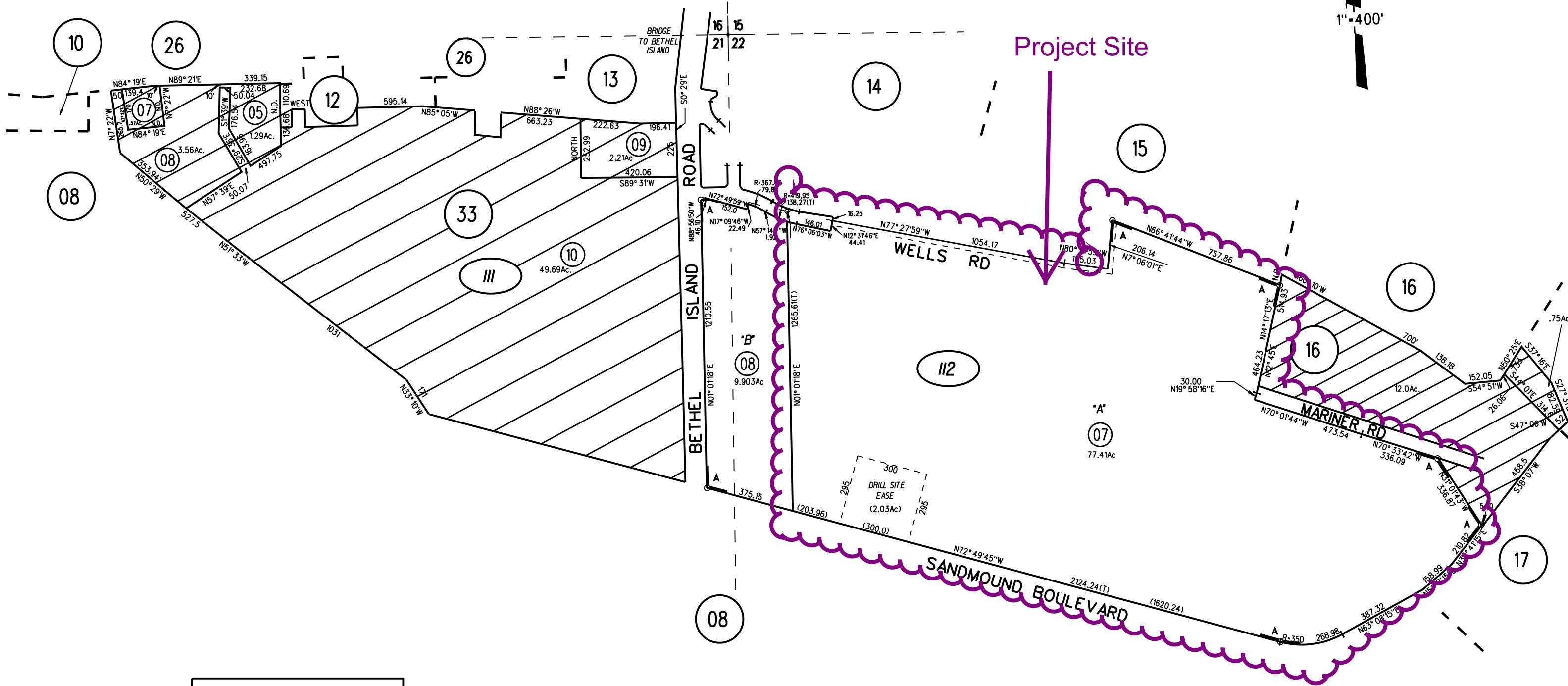
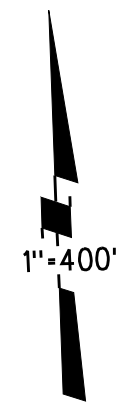


POR N 1/2 SEC'S 21 & 22 T2N R3E MDBM
A- TRACT 8220 MB 483-01 (CORONADO ESTATES) 9/9/2005



NOTE: THIS MAP WAS PREPARED FOR ASSESSMENT PURPOSES ONLY. NO LIABILITY IS ASSUMED FOR THE ACCURACY OF THE INFORMATION DELINEATED HEREON. ASSESSOR'S PARCELS MAY NOT COMPLY WITH LOCAL LOT SPLIT OR BUILDING SITE ORDINANCES.

III
112
08
5/20/09

General Plan: Agricultural Lands, AL



Map Legend

- Assessment Parcels
- Planning**
- General Plan**
- RL (Residential Low Density) (1-3 du/na)
- RLM (Residential Low-Medium Density) (3-7 du/na)
- RM (Residential Medium Density) (7-17 du/na)
- RMH (Residential Medium-High Density) (17-30 du/na)
- RC (Commercial and Office) (C: 1.0 FAR O: 2.75 FAR)
- CR (Commercial Recreation)
- RC (Resource Conservation)
- AL (Agricultural Lands) (1 du/10 ac) (1 du/20 ac in DPZ)
- WA (Water)
- Unincorporated
- City Limits
- Board of Supervisors' Districts

This map is a user generated, static output from an internet mapping application and is intended for reference use only. Data layers that appear on this map may or may not be accurate, current, or otherwise reliable. THIS MAP IS NOT TO BE USED FOR NAVIGATION. CCMAP is maintained by Contra Costa County Department of Information Technology, County GIS. Data layers contained within the CCMAP application are provided by various Contra Costa County Departments. Please direct all data inquiries to the appropriate department.

Spatial Reference
 PCS: WGS 1984 Web Mercator Auxiliary Sphere
 Datum: WGS 1984

Zoning: Planning Unit District, P-1



Map Legend

- Assessment Parcels
- Planning
- Zoning
- ZONE_OVER
- M-12 (Multiple Family Residential)
- F-1 (Water Recreational)
- F-1 -FH (Flood Hazard Combining District)
- A-2 (General Agriculture)
- R-B -CE (Cannabis Exclusion Combining District)
- R-B -CE -FH (Cannabis Exclusion and Flood Hazard)
- P-1 (Planned Unit)
- P-1, -CE (Cannabis Exclusion Combining District)
- P-1 -FH (Flood Hazard Combining District)
- P-1 -FH -UE (Flood Hazard and Animal Exclusion)
- T-1 (Mobile Home/Manufactured Home Park)
- Unincorporated
- City Limits
- Board of Supervisors' Districts

This map is a user generated, static output from an internet mapping application and is intended for reference use only. Data layers that appear on this map may or may not be accurate, current, or otherwise reliable.

THIS MAP IS NOT TO BE USED FOR NAVIGATION.

CCMap is maintained by Contra Costa County Department of Information Technology, County GIS. Data layers contained within the CCMap application are provided by various Contra Costa County Departments. Please direct all data inquiries to the appropriate department.




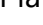

Spatial Reference
 PCS: WGS 1984 Web Mercator Auxiliary Sphere
 Datum: WGS 1984

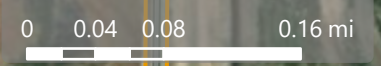


Aerial View



Map Legend

-  Assessment Parcels
-  Planning Layers (DCD)
-  Unincorporated
-  City Limits
-  Board of Supervisors' Districts



This map is a user generated, static output from an internet mapping application and is intended for reference use only. Data layers that appear on this map may or may not be accurate, current, or otherwise reliable.

THIS MAP IS NOT TO BE USED FOR NAVIGATION. CCMap is maintained by Contra Costa County Department of Information Technology, County GIS. Data layers contained within the CCMap application are provided by various Contra Costa County Departments. Please direct all data inquiries to the appropriate department.

Spatial Reference
 PCS: WGS 1984 Web Mercator Auxiliary Sphere
 Datum: WGS 1984