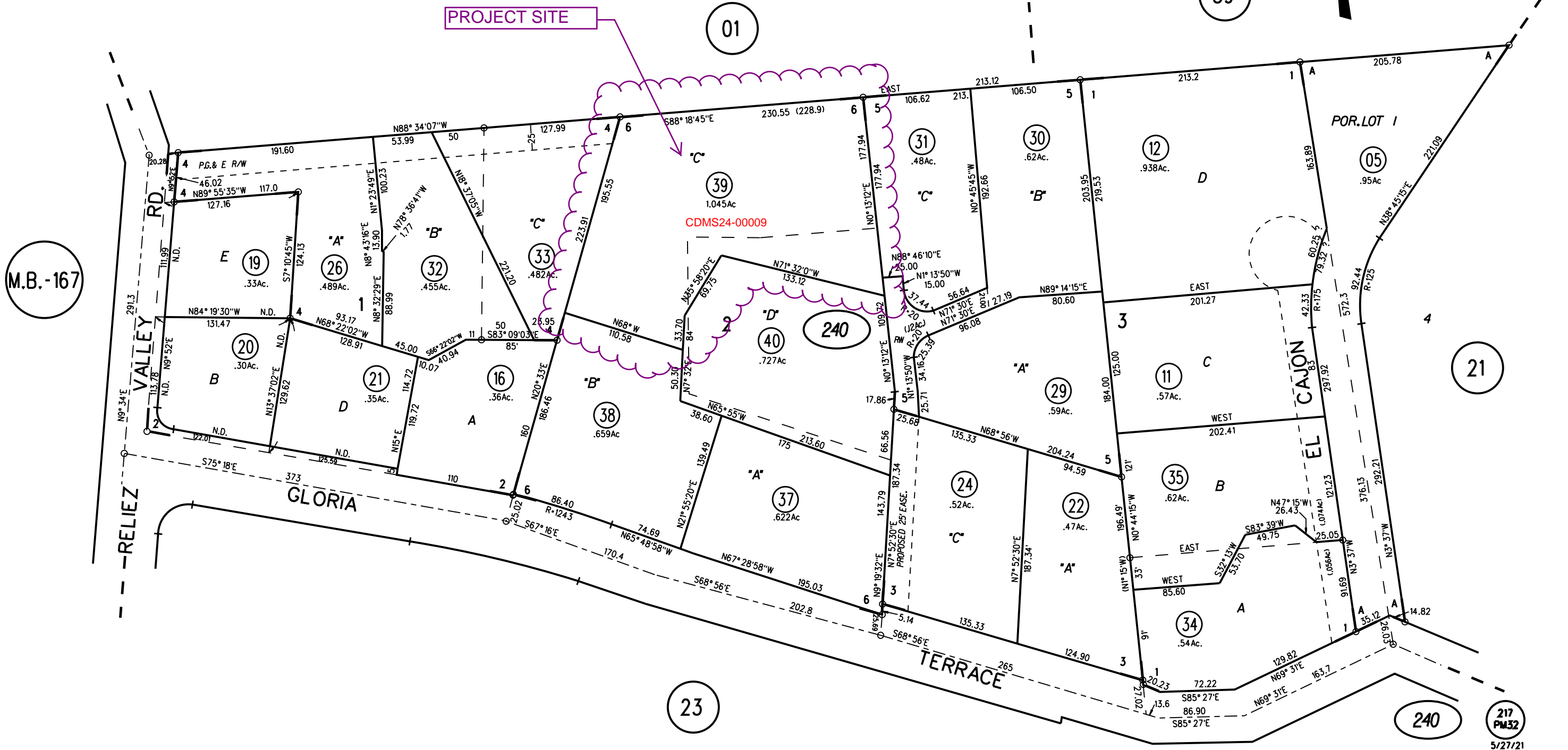


BROOKWOOD ACRES M.B. 9-217  
A- POR.LOT 1 TRACT 6475 MB 303-46 "HASLEMERE" CONDO.

- 1- 35LSM18 6-16-65
- 2- 38LSM38 12-7-65
- 3- 26PM43 3-6-73
- 4- 80PM32 9-7-79
- 5- 86PM42 6-12-80
- 6- 217PM32 4-28-21

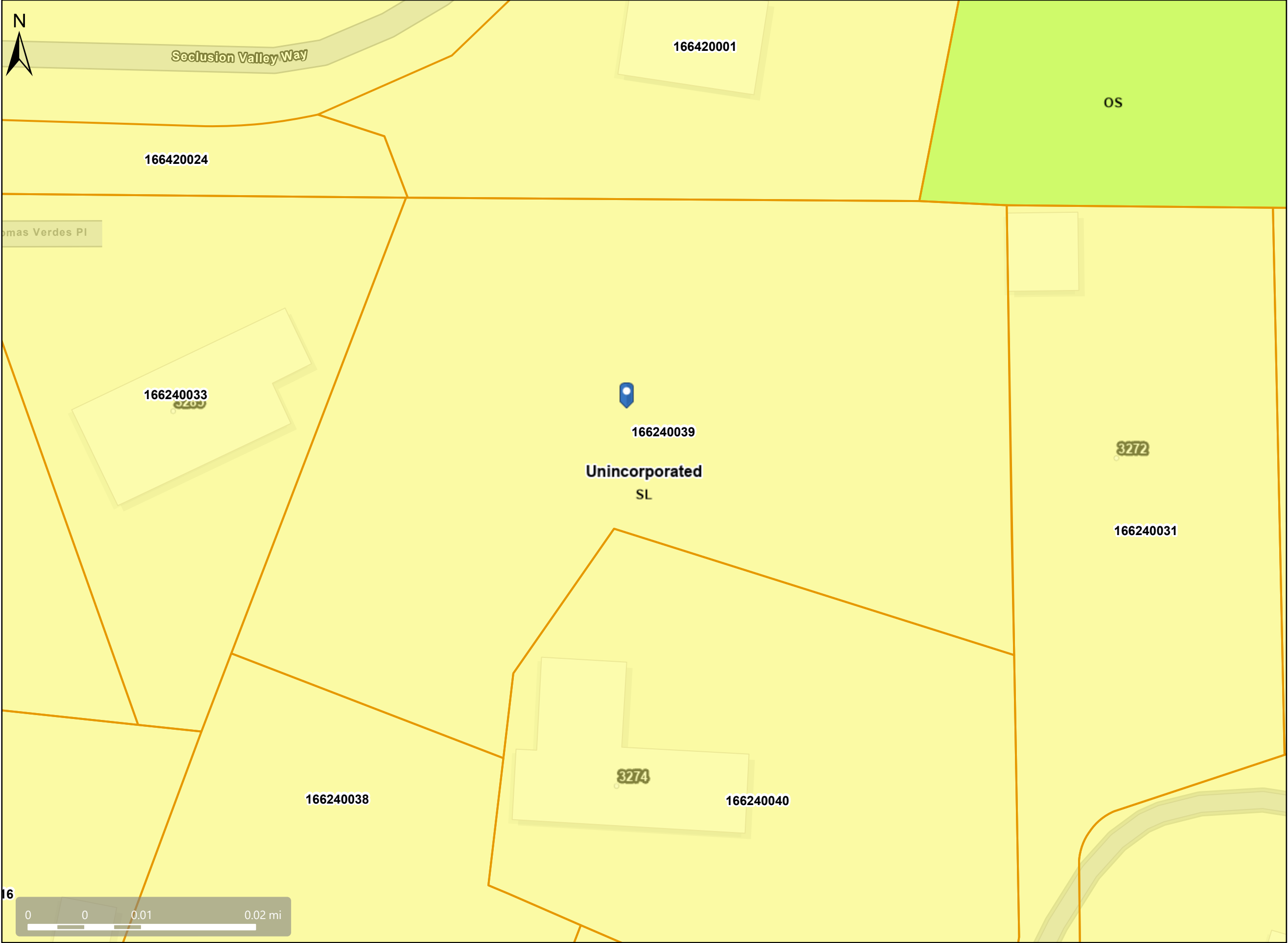
1"=100'



NOTE: THIS MAP WAS PREPARED FOR ASSESSMENT PURPOSES ONLY. NO LIABILITY IS ASSUMED FOR THE ACCURACY OF THE INFORMATION DELINEATED HEREON. ASSESSOR'S PARCELS MAY NOT COMPLY WITH LOCAL LOT SPLIT OR BUILDING SITE ORDINANCES.



General Plan: SL, Single-Family Residential - Low Density



Map Legend

Assessment

Parcels

General Plan

SL (Single Family Residential - Low) 1.0 - 2.9 Units per Net Acre

OS (Open Space)

Unincorporated

Address Points

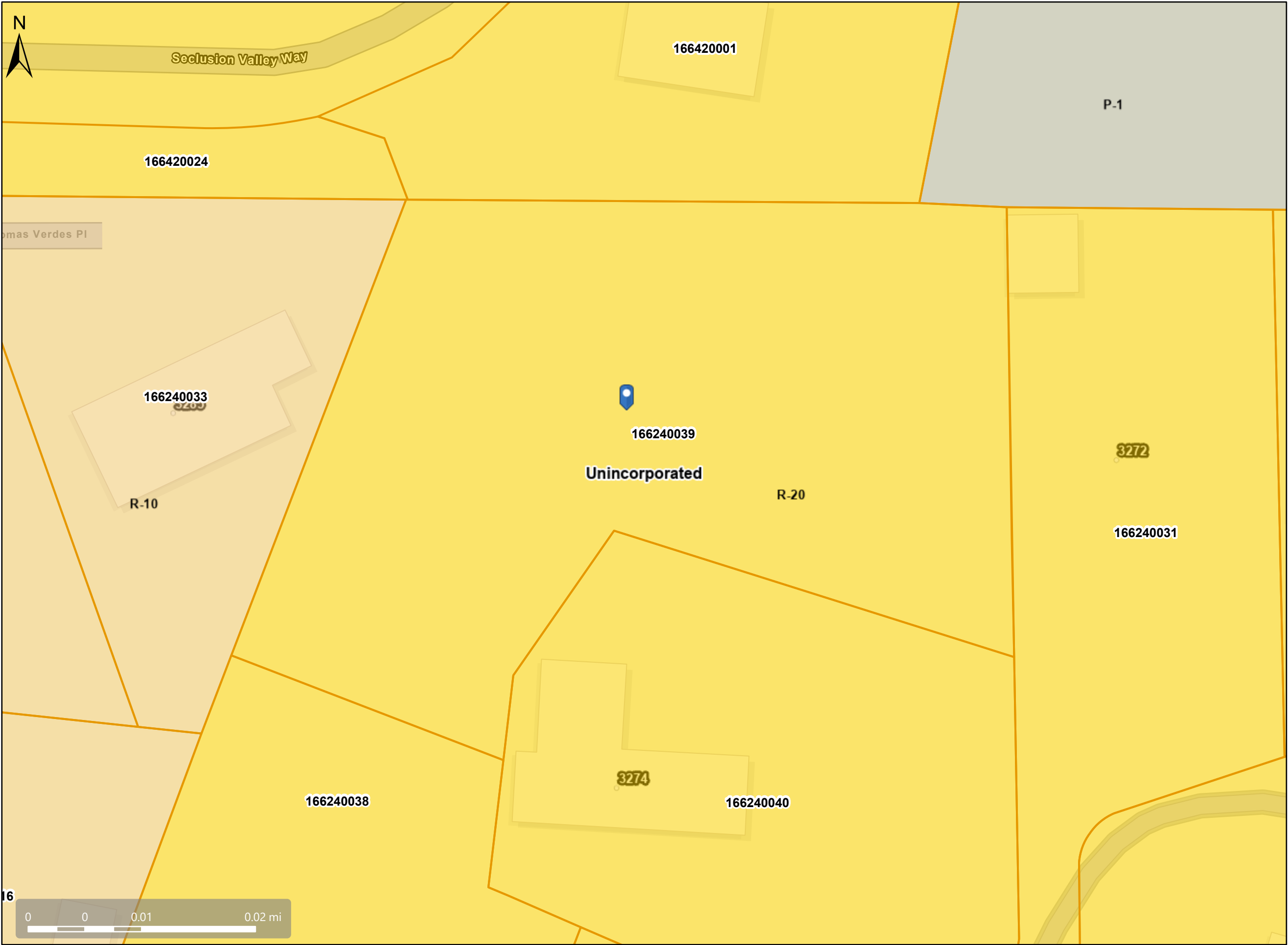


This map is a user generated, static output from an internet mapping application and is intended for reference use only.  
Data layers that appear on this map may or may not be accurate, current, or otherwise reliable.  
THIS MAP IS NOT TO BE USED FOR NAVIGATION.  
CCMap is maintained by Contra Costa County Department of Information Technology, County GIS.  
Data layers contained within the CCMap application are provided by various Contra Costa County Departments.  
Please direct all data inquiries to the appropriate department.

Spatial Reference  
PCS: WGS 1984 Web Mercator Auxiliary Sphere  
Datum: WGS 1984



Zoning: R-20



Map Legend

- Assessment Parcels
- Zoning
- ZONE\_OVER
  - R-10 (Single Family Residential)
  - R-20 (Single Family Residential)
  - P-1 (Planned Unit)
  - Unincorporated
- Address Points

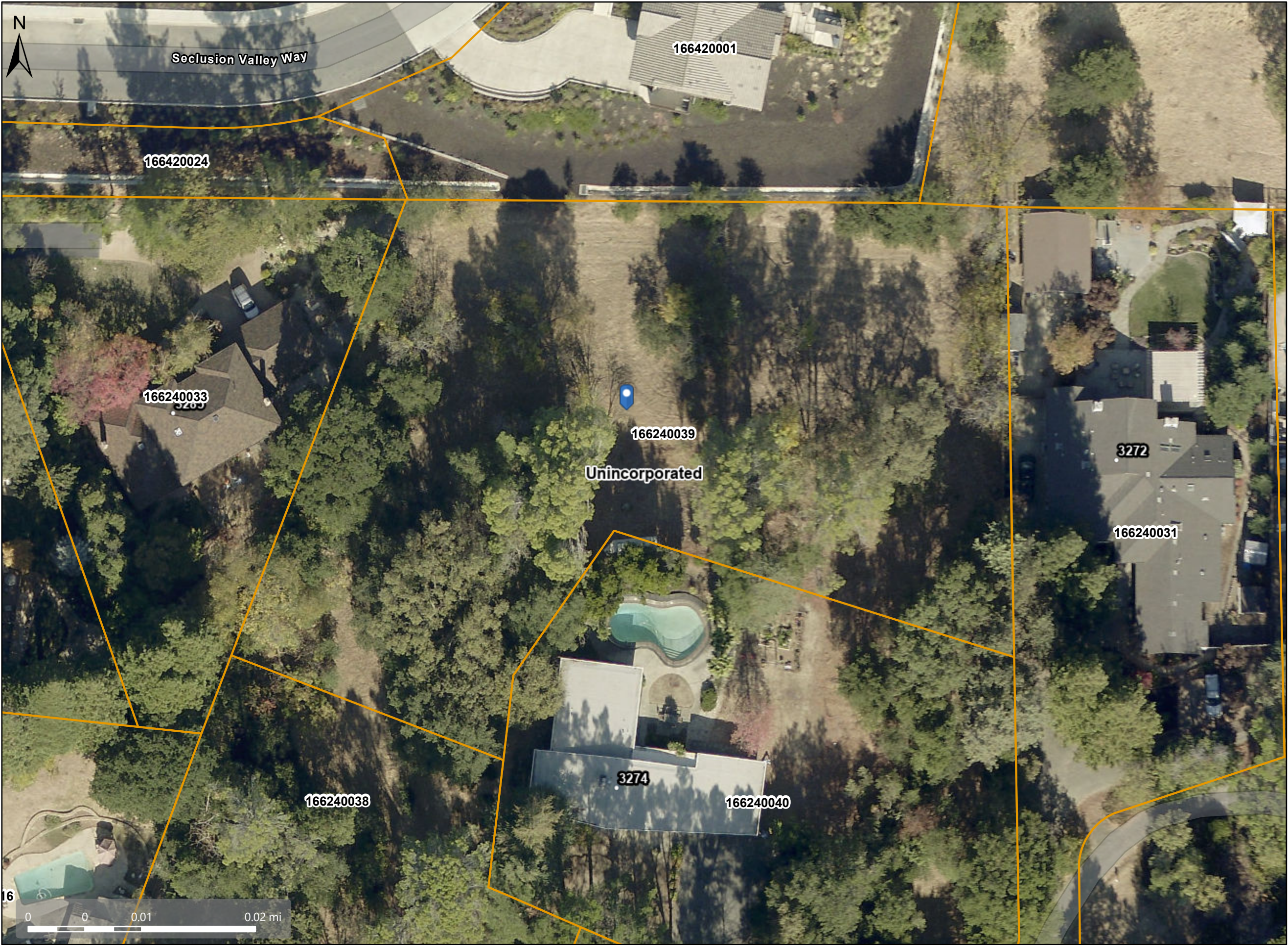


This map is a user generated, static output from an internet mapping application and is intended for reference use only.  
Data layers that appear on this map may or may not be accurate, current, or otherwise reliable.  
THIS MAP IS NOT TO BE USED FOR NAVIGATION.  
CCMap is maintained by Contra Costa County Department of Information Technology, County GIS.  
Data layers contained within the CCMap application are provided by various Contra Costa County Departments.  
Please direct all data inquiries to the appropriate department.  
Spatial Reference  
PCS: WGS 1984 Web Mercator Auxiliary Sphere  
Datum: WGS 1984





# Aerial View



## Map Legend

- Assessment Parcels
- Unincorporated
- Address Points

### Aerials 2019

- Red: Band\_1
- Green: Band\_2
- Blue: Band\_3

**DOIT GIS**  
CONTRA COSTA COUNTY

This map is a user generated, static output from an internet mapping application and is intended for reference use only.  
Data layers that appear on this map may or may not be accurate, current, or otherwise reliable.  
THIS MAP IS NOT TO BE USED FOR NAVIGATION.  
CCMap is maintained by Contra Costa County Department of Information Technology, County GIS.  
Data layers contained within the CCMap application are provided by various Contra Costa County Departments.  
Please direct all data inquiries to the appropriate department.  
Spatial Reference  
PCS: WGS 1984 Web Mercator Auxiliary Sphere  
Datum: WGS 1984