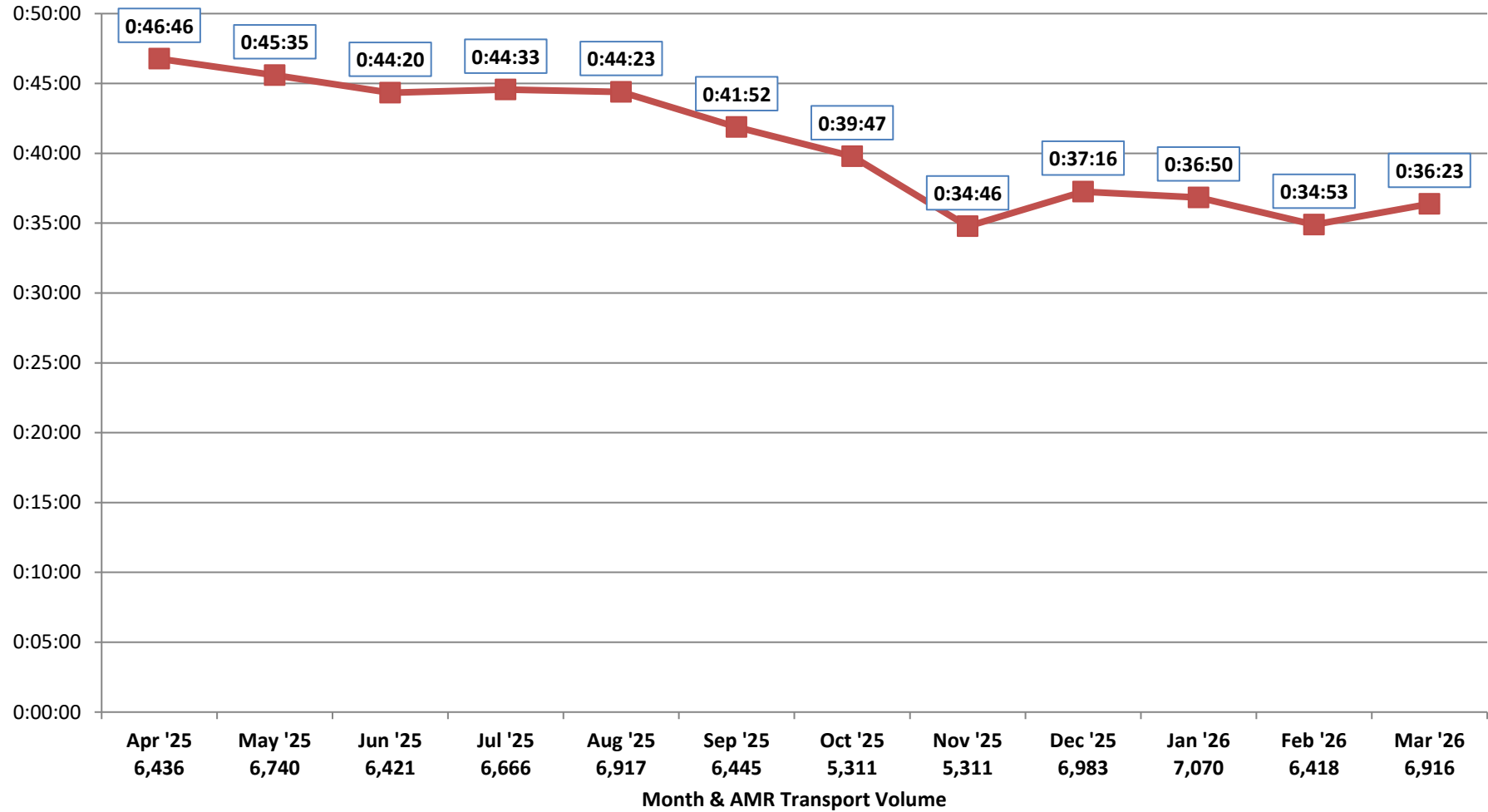




Patient Transfer of Care Times by Facility 90th PERCENTILE OF ALL FACILITIES

April 2025 - March 2026
78,885 Transports (6,574 per Month)
Source: AMR MEDS (ePCR Database)



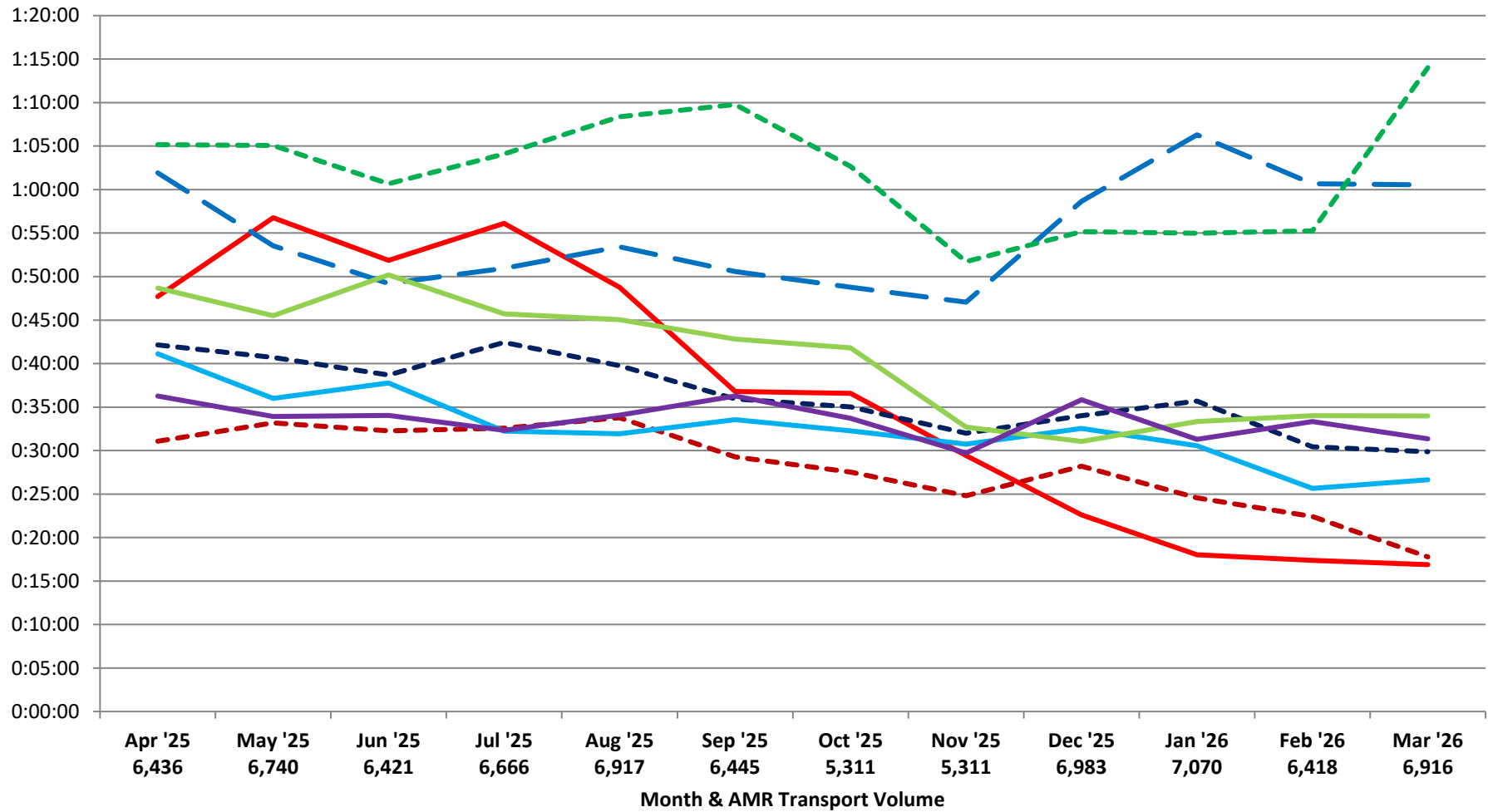


Patient Transfer of Care Times by Facility (90th Percentile)

April 2025 - March 2026

Source: AMR MEDS (ePCR Database)

- - - John Muir - Concord
- John Muir - Walnut Creek
- Kaiser Hospital - Antioch
- Kaiser Hospital - Richmond
- - - Kaiser Hospital - Walnut Creek
- Contra Costa Regional Medical Center
- Sutter Delta Medical Center
- - - PES - Contra Costa Regional Medical Center





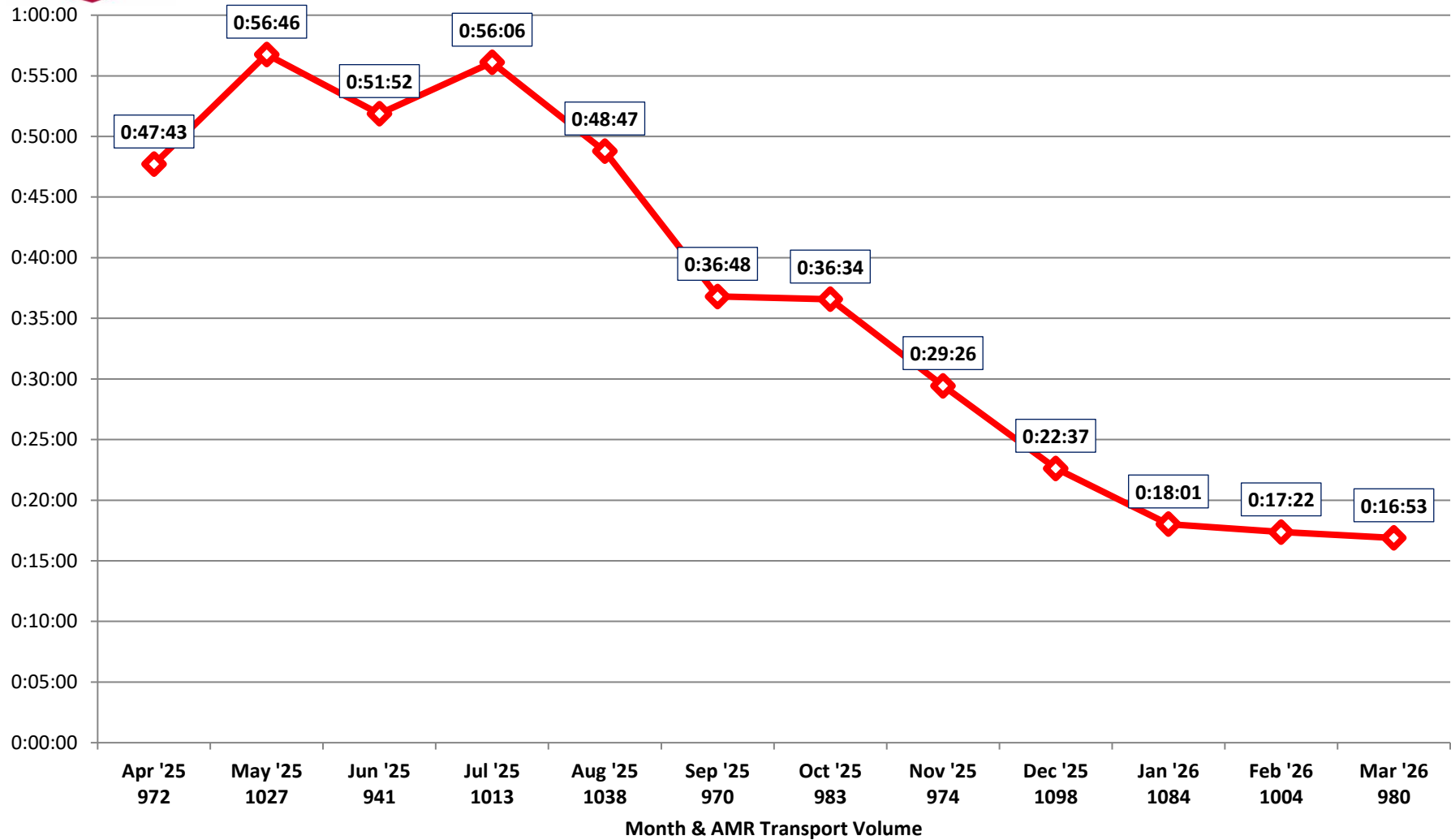
Patient Transfer of Care Times by Facility (90th Percentile)

John Muir - Walnut Creek

April 2025 - March 2026

12,084 Total Transports (1007 per Month)

Source: AMR MEDS (ePCR Database)





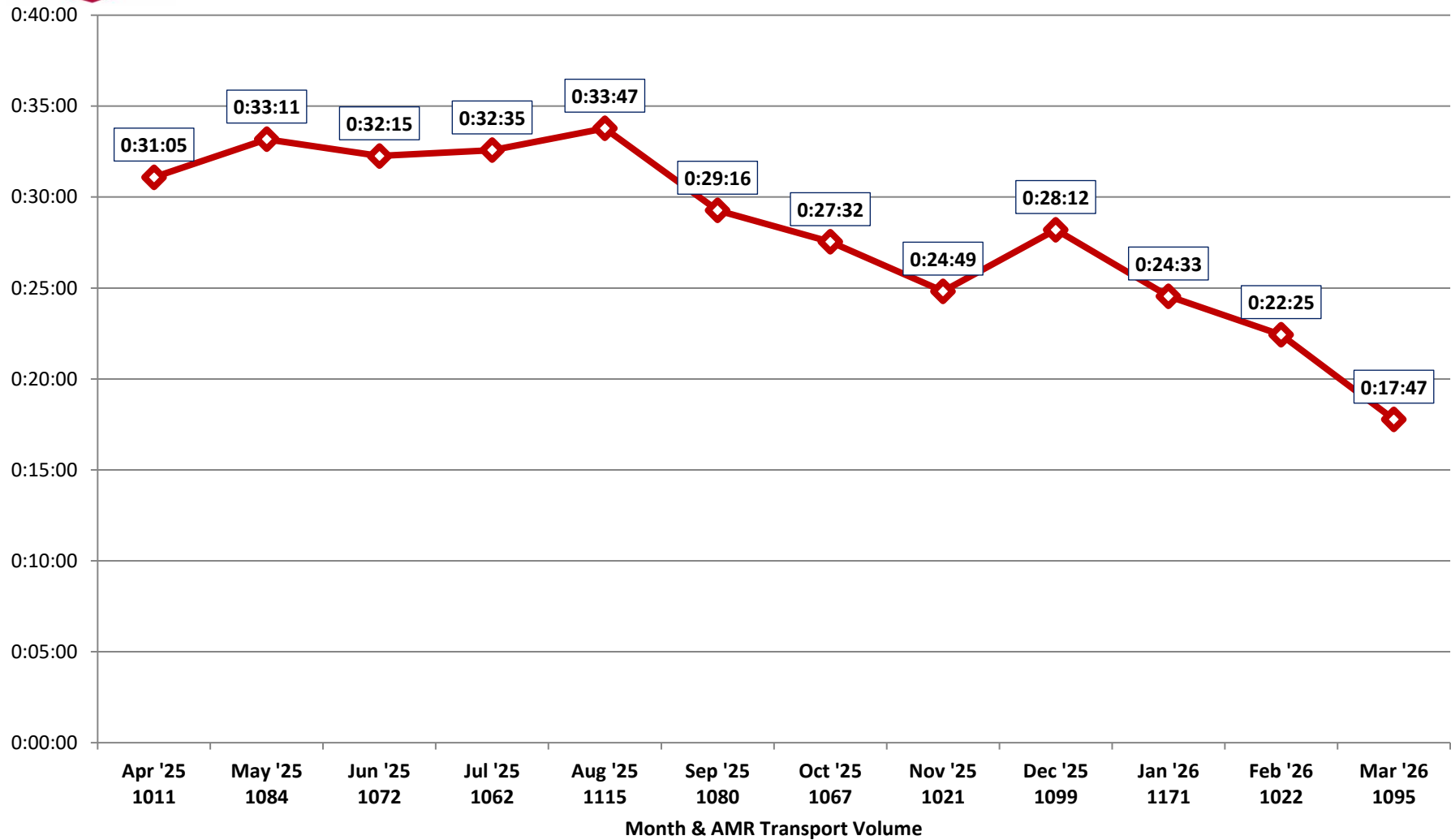
Patient Transfer of Care Times by Facility (90th Percentile)

John Muir - Concord

April 2025 - March 2026

12,899 Total Transports (1075 per Month)

Source: AMR MEDS (ePCR Database)





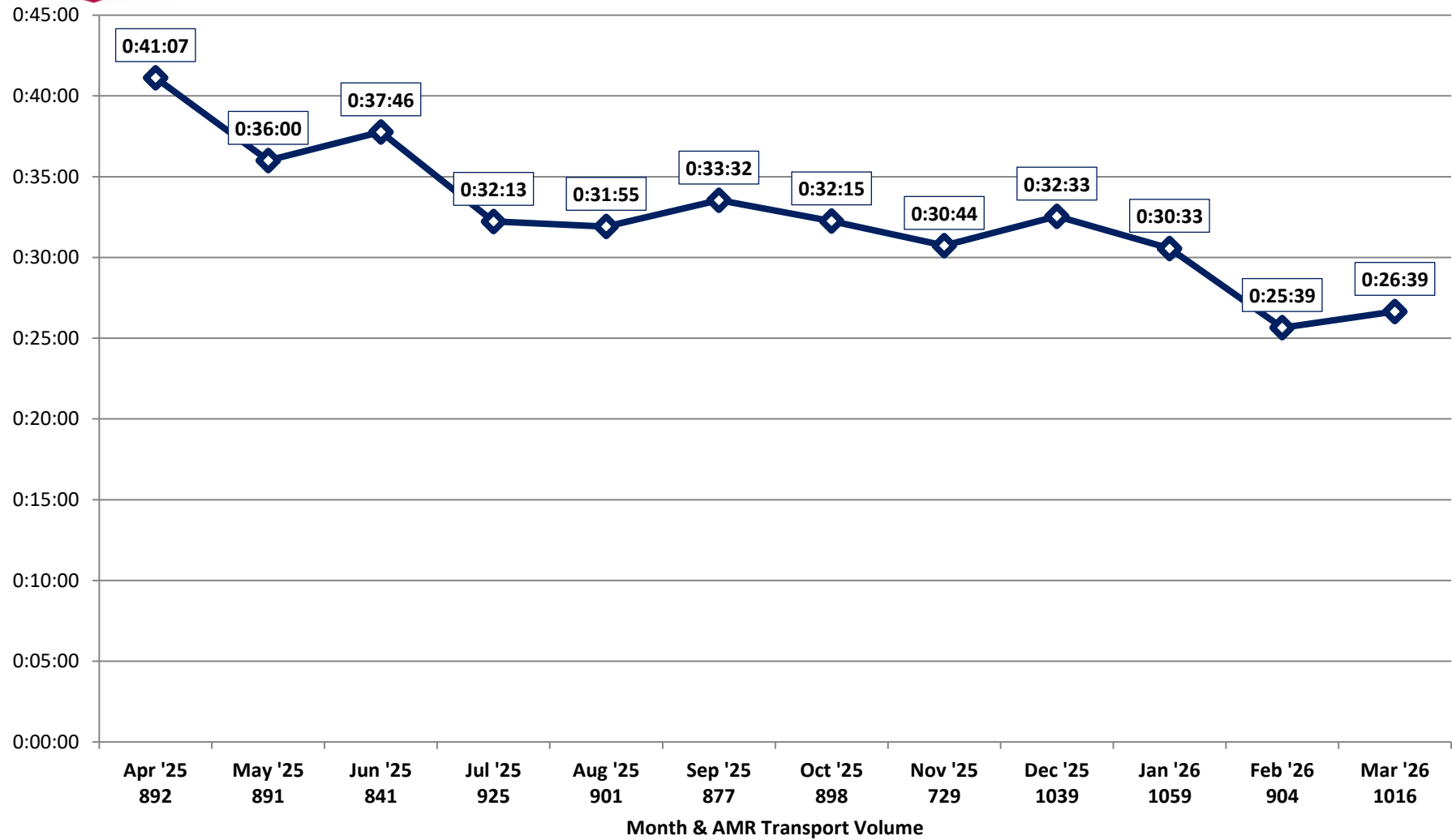
Patient Transfer of Care Times by Facility (90th Percentile)

Kaiser - Antioch

April 2025 - March 2026

10,972 Total Transports (914 per Month)

Source: AMR MEDS (ePCR Database)





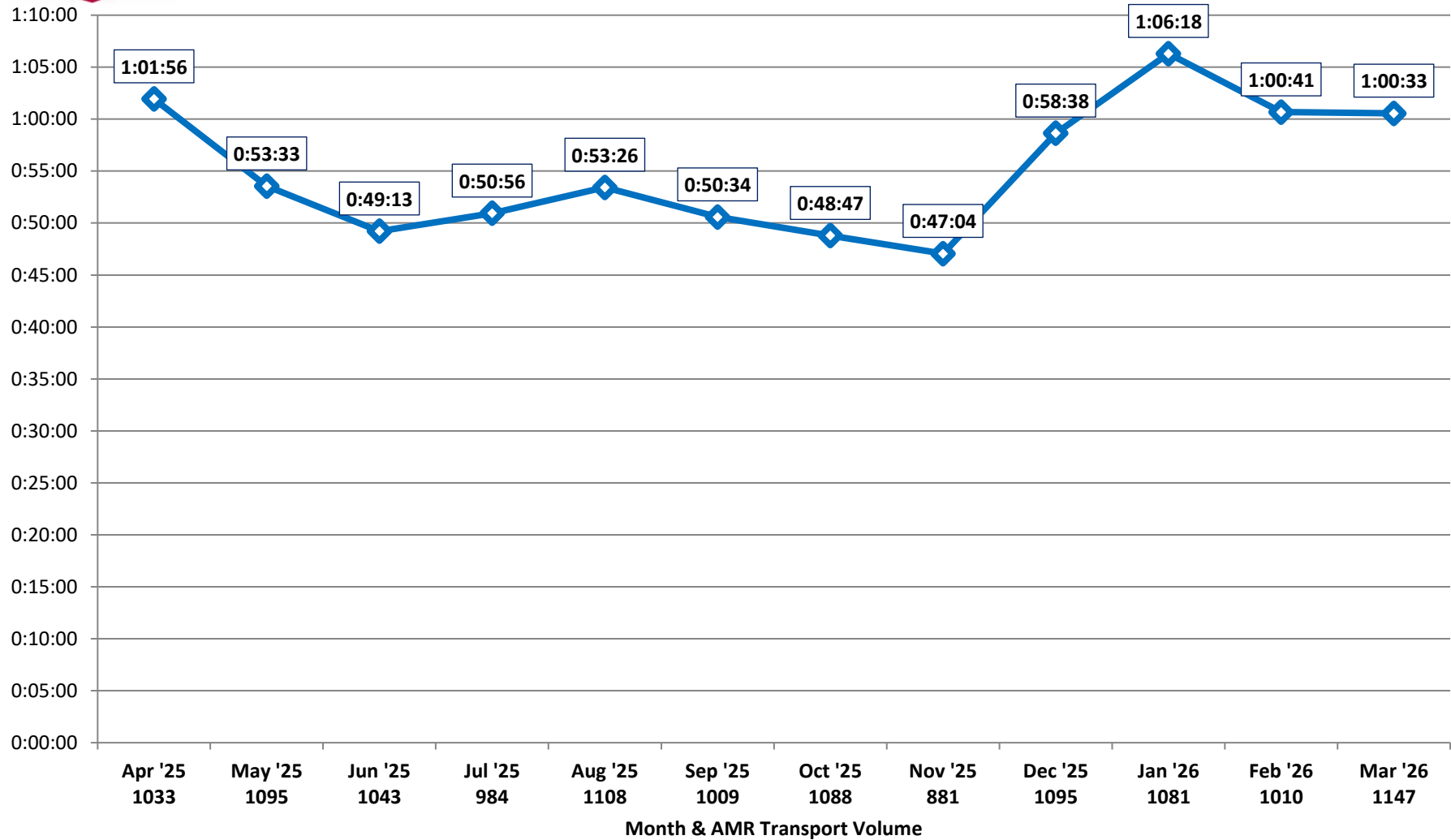
Patient Transfer of Care Times by Facility (90th Percentile)

Kaiser - Richmond

April 2025 - March 2026

12,574 Total Transports (1,048 per Month)

Source: AMR MEDS (ePCR Database)





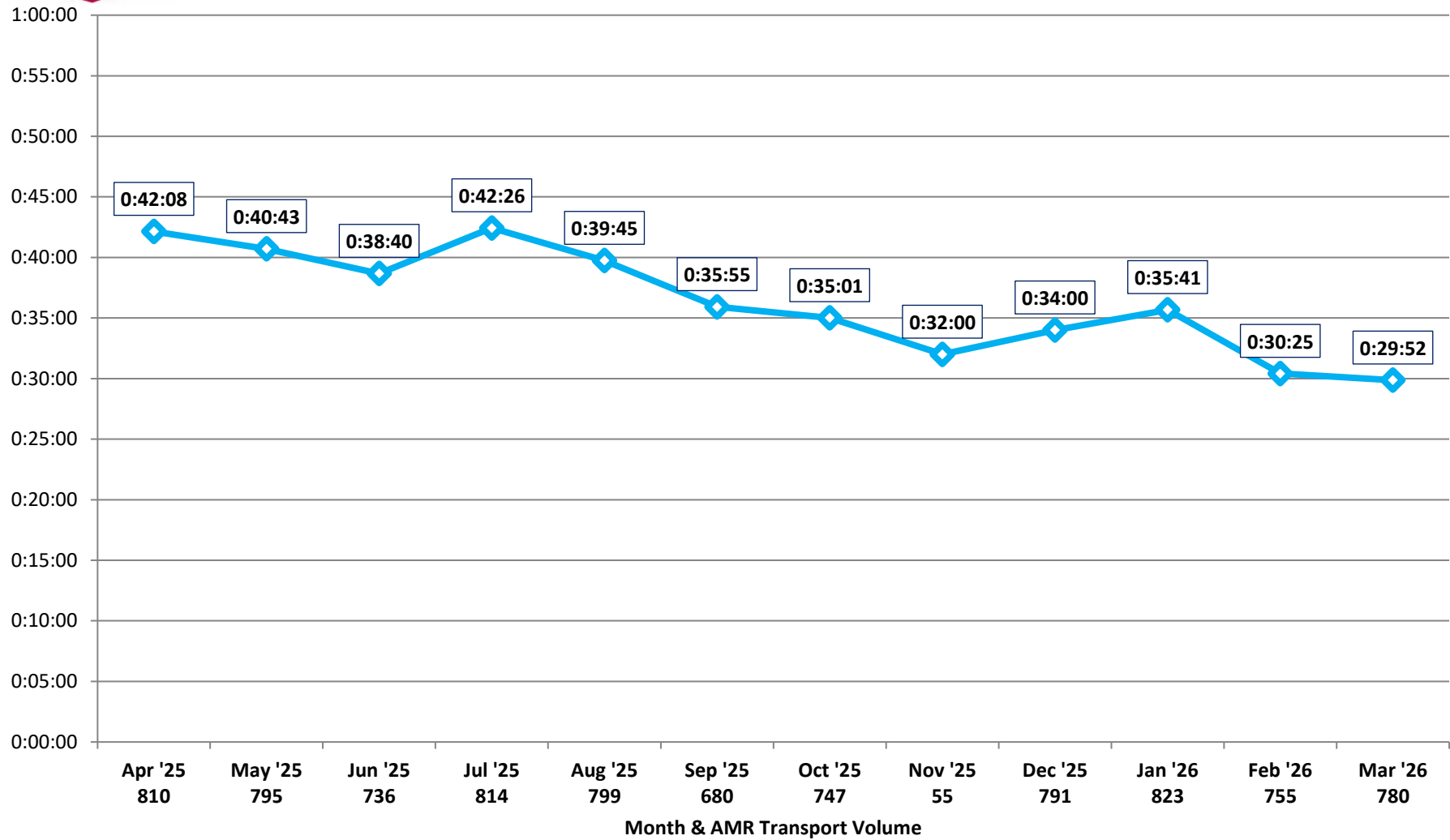
Patient Transfer of Care Times by Facility (90th Percentile)

Kaiser - Walnut Creek

April 2025 - March 2026

8,585 Total Transports (715 per Month)

Source: AMR MEDS (ePCR Database)





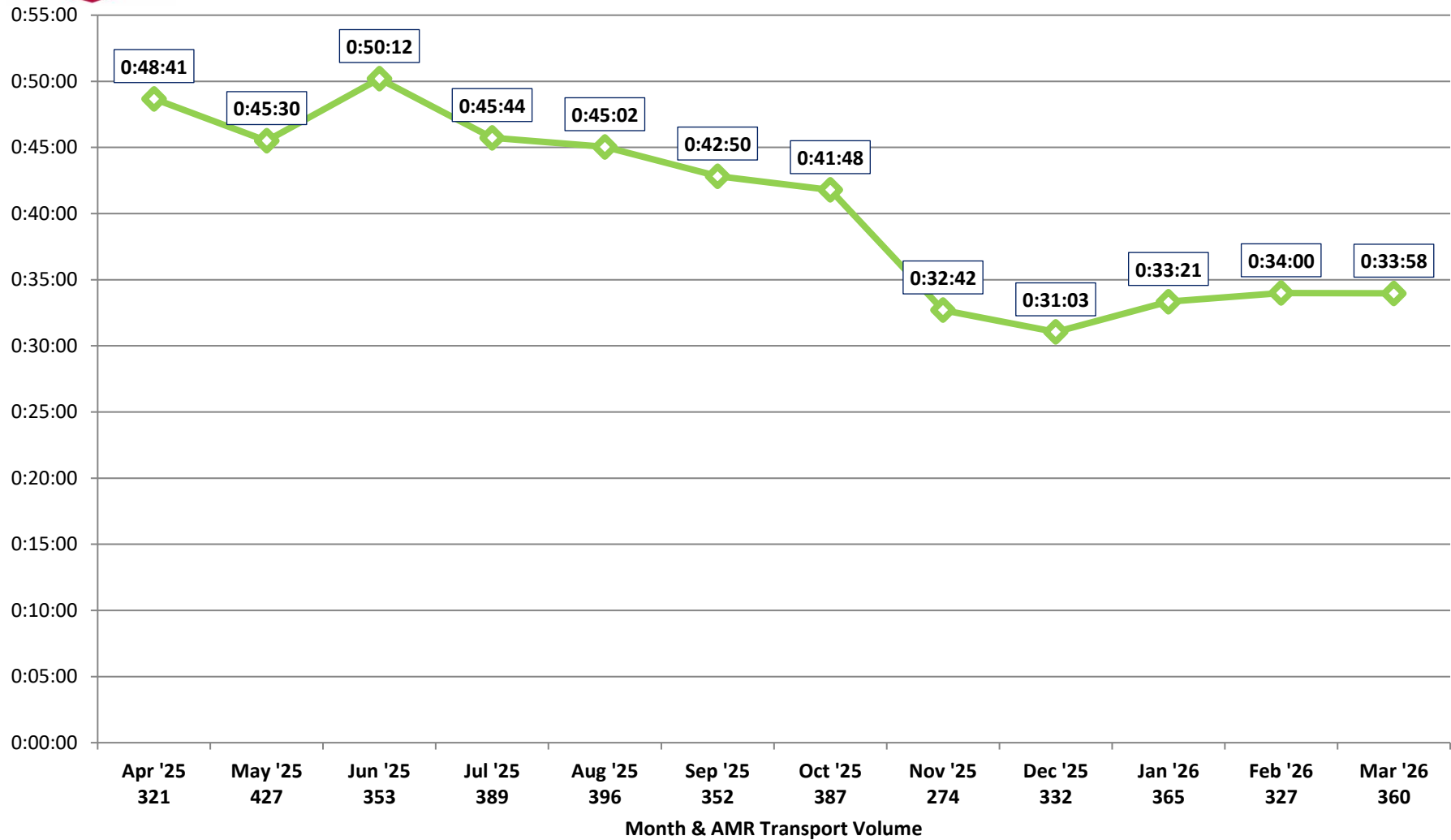
Patient Transfer of Care Times by Facility (90th Percentile)

Contra Costa Regional Medical Center

April 2025 - March 2026

4,283 Total Transports (357 per Month)

Source: AMR MEDS (ePCR Database)





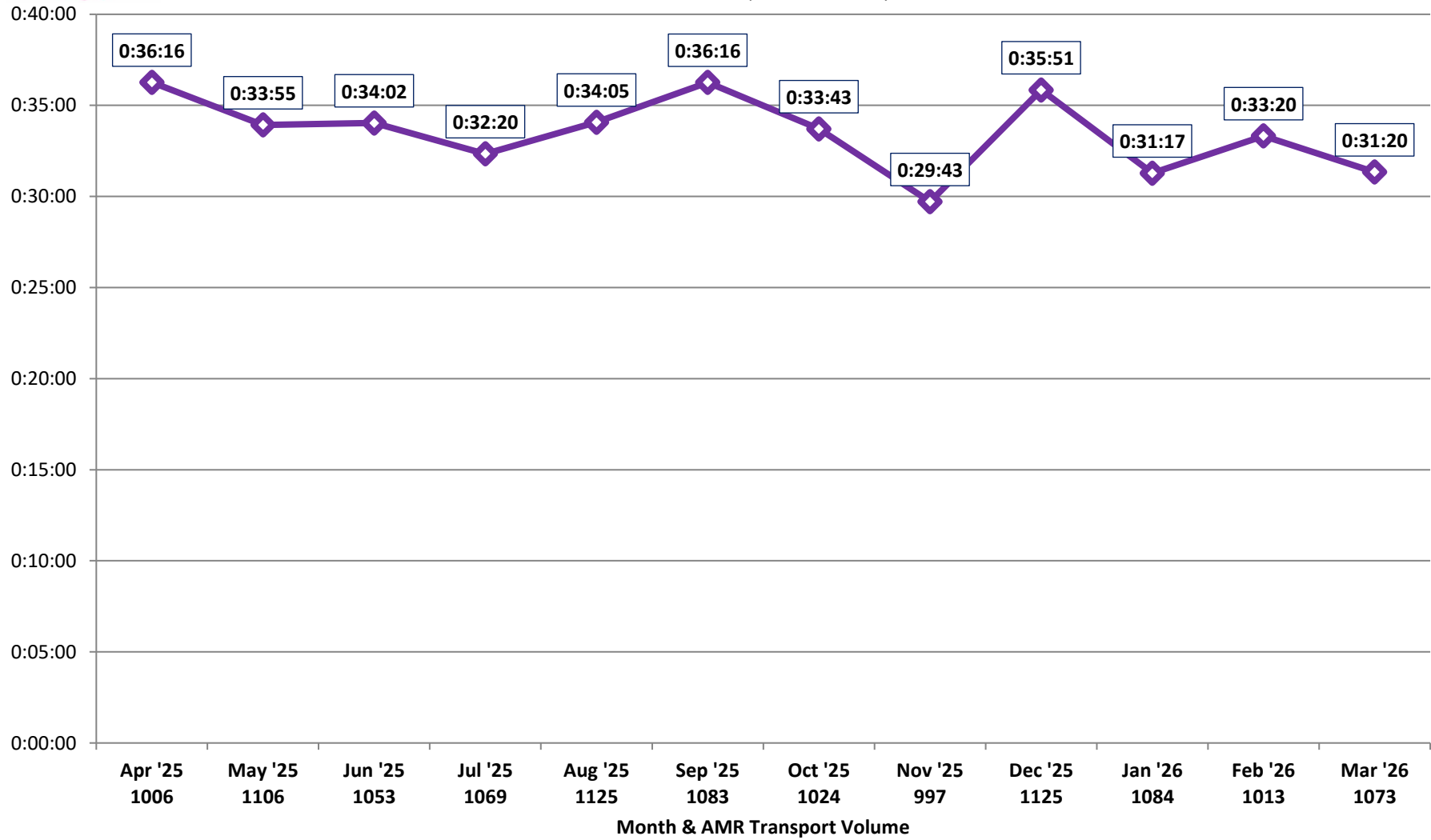
Patient Transfer of Care Times by Facility (90th Percentile)

Sutter Delta Medical Center

April 2025 - March 2026

12,758 Total Transports (1063 per Month)

Source: AMR MEDS (ePCR Database)





Patient Transfer of Care Times by Facility (90th Percentile)

CCRMC - PES

April 2025 - March 2026

4,730 Total Transports (394 per Month)

Source: AMR MEDS (ePCR Database)

