



AGENDA

CONTRA COSTA COUNTY Contra Costa Council on Homelessness

Thursday, April 17, 2025

9:30 AM

Virtual Only:

[https://us02web.zoom.us/meeting/register/tZErdemqqTsoE90m6dcFxsS5rdtyuo4x2Dj9#/](https://us02web.zoom.us/join/https://us02web.zoom.us/meeting/register/tZErdemqqTsoE90m6dcFxsS5rdtyuo4x2Dj9#/)

PATH Innovations Committee Work Group

PATH Innovations Committee Work Group 4.17.25 agenda, slide deck and minutes [25-1477](#)

Attachments: [PATH Innovations Committee Working Group Agenda 04172025](#)
[PATH Innovations Committee Working Group Slide Deck 04172025](#)
[PATH Innovations Committee Meeting Minutes 02202025](#)

Agenda Items: Items may be taken out of order based on the business of the day and preference of the Committee

1. Roll Call and Introductions

Matt Lemon, Focus Strategies

2. Public comment on any item under the jurisdiction of the Committee and not on this agenda (speakers may be limited to two minutes).

Matt Lemon, Focus Strategies

3. Point-In-Time (PIT) Count Update – Update on survey data collection and extension of timeline

Janel Fletcher, H3

4. Conference Updates – Reflections on the recent Housing California Conference and National Alliance to End Homelessness Conference [25-1478](#)

Attachments: [5.08 Early Lessons from California's ERF & the Unsheltered NOFO](#)

Jamie Schecter, H3; Shelby Ferguson, H3; Mary Juarez-Fitzgerald, H3

5. Federal Changes and HUD Updates – Update on SNOFO technical assistance and other federally funded programs

Jamie Schecter, H3 and Shelby Ferguson, H3

6. Data Integration Project – Background on PATH CITED application to improve data sharing for care coordination

Kim Thai, H3 and Ryan Rae Tapia, H3

7. Stakeholder Spotlight: Youth Action Board (YAB) – Presentation on the Youth Empowerment Summit

Juno Hedrick, Lived Experience Advisor and Vice Chair and YAB Lead and Lean Saelee, YAB Lead

8. Announcements

All

9. Next Steps

Matt Lemon, Focus Strategies

The next meeting is currently scheduled for Thursday, May 15, 2025.

Adjourn

The Committee will provide reasonable accommodations for persons with disabilities planning to attend the Committee meetings. Contact the staff person listed below at least 72 hours before the meeting. Any disclosable public records related to an open session item on a regular meeting agenda and distributed by the County to a majority of members of the Committee less than 96 hours prior to that meeting are available for public inspection at 2400 Bisso Lane, D2, Concord during normal business hours. Staff reports related to items on the agenda are also accessible online at www.contracosta.ca.gov. If the Zoom connection malfunctions for any reason, the meeting may be paused while a fix is attempted. If the connection is not reestablished, the committee will continue the meeting in person without remote access. Public comment may be submitted via electronic mail on agenda items at least one full work day prior to the published meeting time.

For Additional Information Contact: contracostacoc@cchealth.org



CONTRA COSTA COUNTY

1025 ESCOBAR STREET
MARTINEZ, CA 94553

Staff Report

File #: 25-1477

Agenda Date: 4/17/2025

Agenda #:

Advisory Board: Contra Costa Council on Homelessness PATH Innovations Committee WG

Subject: PATH Innovations Committee WG 4.17.25 agenda and slide deck

Presenter:

Contact:

Information:

Referral History and Update:

Recommendation(s)/Next Step(s):



PLAN FOR ACCELERATING TRANSFORMATIVE HOUSING (PATH) INNOVATIONS COMMITTEE MEETING

WORKING GROUP AGENDA

DATE: Thursday, April 17th, 2025, 9:30 am – 11:00 am

PUBLIC ACCESS:

The public may attend this meeting remotely via Zoom or call-in.
Login information and call-in information are provided below.

HOW TO JOIN THE MEETING VIA ZOOM:

https://us02web.zoom.us/webinar/register/WN_snPLrBTdRpqyeF24XDp1sw

HOW TO JOIN THE MEETING VIA CALL-IN:

1-669-900-6833

Webinar ID: 856 2027 0299

Passcode: 377720

| Time | Agenda Item | Presenter/Facilitator |
|-------|---|---|
| 9:30 | <u>Welcome and Introductions</u> | - Matt Lemon, Focus Strategies |
| | <u>Working Group Meeting Norms</u> | - Matt Lemon, Focus Strategies |
| 9:45 | <u>Point-In-Time (PIT) Count Update</u> – Update on survey data collection and extension of timeline | - Janel Fletcher, H3 |
| 9:50 | <u>Conference Updates</u> – Reflections on the recent Housing California Conference and National Alliance to End Homelessness Conference | - Jamie Schechter, H3 - Shelby Ferguson, H3 - Mary Juarez-Fitzgerald, H3 |
| 10:00 | <u>Federal Changes and HUD Updates</u> – Update on SNOFO technical assistance and other federally funded programs | - Jamie Schechter, H3 - Shelby Ferguson, H3 |
| 10:15 | <u>Data Integration Project</u> – Background on PATH CITED application to improve data sharing for care coordination | - Kim Thai, H3 - Ryan Rae Tapie, H3 |
| 10:30 | <u>Stakeholder Spotlight: Youth Action Board (YAB)</u> – Presentation on the Youth Empowerment Summit | - Juno Hedrick, Lived Experience Advisor and Vice Chair and YAB Lead - Lean Saelee, YAB Lead |
| 10:50 | <u>Announcements</u> | - All |
| 10:55 | <u>Next Steps</u> | - Matt Lemon, Focus Strategies |



PLAN FOR ACCELERATING TRANSFORMATIVE HOUSING (PATH) INNOVATIONS COMMITTEE MEETING

HOW TO PROVIDE PUBLIC COMMENT:

Persons who wish to address the Council on Homelessness during public comment on matters within the jurisdiction of the Council on Homelessness that are not on the agenda, or who wish to comment with respect to an item on the agenda, may comment in person, via Zoom, or via call-in. Those participating in person should stand where they are sitting when called upon. Those participating via Zoom should indicate they wish to speak by using the “raise your hand” feature in the Zoom app. Those calling in should indicate they wish to speak by dialing *9 on their phone. All public comments will be limited to 2 minutes per speaker.

For assistance with remote access contact: contracostacoc@cchealth.org or call 925-608-6700. Public comments may also be submitted before the meeting by email at contracostacoc@cchealth.org or by voicemail at 925-608-6700. Comments submitted by email or voicemail will be included in the record of the meeting but will not be read or played aloud during the meeting.

Any disclosable public records related to an open session item on a regular meeting agenda and distributed by the Contra Costa Council on Homelessness to a majority of members less than 72 hours prior to that meeting are available for public inspection at 2400 Bisso Lane, Building D, 2nd Floor, Concord, CA 94520 during normal business hours. Public comment may be submitted via electronic mail on agenda items at least one full workday prior to the published meeting time. The Contra Costa Council on Homelessness will provide reasonable accommodations for persons with disabilities planning to attend meetings. Contact the H3 office at least 72 hours before the meeting: Phone: (925) 608-6700; Email: cchomelesscouncil@cchealth.org



PLAN FOR ACCELERATING TRANSFORMATIVE HOUSING (PATH) INNOVATIONS COMMITTEE MEETING

Commonly Used Acronyms and Terms

| Acronym | Definition |
|-------------------------|--|
| APR | Annual Performance Report (for HUD homeless programs) |
| BOS | Board of Supervisors (Contra Costa County) |
| BCSH | California Business Consumer, Services and Housing Agency |
| CARE | Coordinated Assessment and Resource |
| CCACS/CCYCS | Contra Costa Adult Continuum of Service/ Contra Costa Youth Continuum of Services (H3 programs) |
| CDBG, CDBG-CV | Community Development Block Grant (federal and state programs) and the federal Community Development Block Grant CARES Act coronavirus allocation. |
| CESH | California Emergency Solutions and Housing program (state funding) |
| COH | Council on Homelessness |
| Continuum of Care (CoC) | Continuum of Care approach to assistance to the homeless. Federal grant program promoting and funding permanent solutions to homelessness. |
| Con Plan | Consolidated Plan, a locally developed plan for housing assistance and urban development under CDBG. |
| CES/CE | Coordinated Entry |
| CNWS | Concord Naval Weapons Station |
| CORE | Coordinated Outreach Referral, Engagement program |
| COVID-19 | Coronavirus |
| DCD | Contra Costa Department of Conservation and Development |
| DOC | Department Operations Center |
| CDSS | California Department of Social Services |
| EHSD | (Contra Costa County) Employment and Human Services Division |
| EOC | Emergency Operations Center |
| ESG and ESG-CV | Emergency Solutions Grant (federal and state program) and the federal Emergency Solutions Grant CARES Act coronavirus allocation. |
| FMR | Fair Market Rent (maximum rent for Section 8 rental assistance/CoC grants) |
| HCD | Housing and Community Development (State office) |
| HCFC | Housing Coordinating and Financing Council (state governing board under BCSH) |
| HEAP | Homeless Emergency Aid Program (state funding) |
| HEARTH | Homeless Emergency and Rapid Transition to Housing (HEARTH) Act of 2009 |
| HHAP | Homeless Housing and Assistance Program (state funding); |
| HMIS | Homeless Management Information System |
| HOME | Home Investment Partnerships (CPD program) |
| Homekey | California funding to support development of interim and permanent housing |
| HUD | U.S. Department of Housing and Urban Development (federal) |
| MHSA | Mental Health Services Act |



PLAN FOR ACCELERATING TRANSFORMATIVE HOUSING (PATH) INNOVATIONS COMMITTEE MEETING

| Acronym | Definition |
|-----------------|---|
| NOFO | Notice of Funding Opportunity |
| PHA | Public Housing Authority |
| Project Roomkey | COVID-related State funding program to support de-congregating homeless shelters using hotels/motels. |
| PSH | Permanent Supportive Housing |
| PUI | Persons Under Investigation |
| RFP/RFQ/LOI | Request for Proposal/Request for Qualifications/Letter of Intent related to funding opportunities |
| RRH | Rapid Rehousing |
| SAMHSA | Substance Abuse & Mental Health Services Administration |
| SRO | Single-Room Occupancy housing units |
| SSDI | Social Security Disability Income |
| SSI | Supplemental Security Income |
| TA | Technical Assistance |
| TAY | Transition Age Youth (usually ages 16-24) |
| VA | Veterans Affairs (U.S. Department of) |
| VASH | Veterans Affairs Supportive Housing |
| VI-SPDAT | Vulnerability Index – Service Prioritization Decision Assistance Tool |



PLAN FOR ACCELERATING TRANSFORMATIVE HOUSING (PATH) INNOVATIONS COMMITTEE

April 17th, 2025, 9:30 – 11:00 am

WELCOME & INTRODUCTIONS

Matt Lemon, Focus Strategies

PATH Innovations Committee is comprised of a diverse group of community stakeholders and CoC partners who monitor projects related to the countywide goal of reducing unsheltered homelessness in Contra Costa County in alignment with the [Regional Action Plan](#).

INTRODUCTIONS

PATH Committee Members

H3 Staff

Focus Strategies

Stakeholders

WORKGROUP MEETING NORMS

Matt Lemon, Focus Strategies

WORKGROUP MEETING NORMS

1. Raise your hand (virtually) before speaking
2. Say your name and if you're a Committee member before speaking
3. Maintain a safe and respectful environment, even when disagreeing
4. Make and take space – consider your privilege and other voices who are in and not in the room

WORKGROUP MEETING NORMS

An individual may be asked to leave should they behave in a manner that threatens the safety of the group or does not honor these meeting norms.

POINT-IN-TIME (PIT) COUNT UPDATE

Janel Fletcher, H3

POST PIT SURVEYS

- After the observational count, the CoC collects community surveys to learn about the demographics, needs, and causes of unsheltered homelessness from people experiencing unsheltered homelessness in our community
- The survey collection period started on February 24th and ended March 21st

Volunteers collected over 430 surveys!

NEXT STEPS

- Results from the Post PIT surveys will be used to estimate the demographics, needs, and causes of homelessness for individuals and sleep settings identified during the observational count on January 29th
- PIT Data are submitted to HUD for review and approval (TBD)
- Once approved, final results are shared with the COH community

THANK YOU!

HUGE THANK YOU TO VOLUNTEERS FOR THEIR SUPPORT!

BARM

H3 Programs

- Concord Service Center

- CORE Outreach

Contra Costa College

GRIP

RYSE

SHELTER, INC.

STAND! For Families
Free of Violence

The Share Community

Trinity Center

CONFERENCE UPDATES

Jamie Schechter, H3

Shelby Ferguson, H3

Mary Juarez-Fitzgerald, H3

HOUSING CALIFORNIA

Annual Conference hosted by Housing California

Emphasis on affordable housing development and ending homelessness

Nearly 3,000 attendees



HOUSING CALIFORNIA – CONTRA COSTA SPOTLIGHTS



Offices to Homes – session presented by H3, Hope Solutions, and Overaa Construction about the development of El Portal Place

Getting Creative with Funding: Leveraging Legal System Funds for Housing and Supportive Services – session presented by Homebase, Nicole Green, and Brilliant Corners

From the Ground Up: Residents United Network Leading the Charge on Housing Solutions – session presented by leaders from RUN, including Hope Solutions Board Member, William Goodwin

NATIONAL ALLIANCE TO END HOMELESSNESS (NAEH) CONFERENCE



H3 presentation on
Encampment Resolution
Funding (ERF)



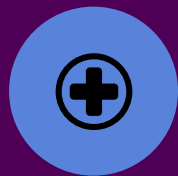
Focus on unsheltered
homelessness



Creating safe and low
barrier shelter settings



Leveraging Lived
Experience and Peer
Support



Connecting Health/Public
Health and Homeless
Services



Centering Equity

FEDERAL CHANGES & HUD UPDATES

Jamie Schechter, H3

Shelby Ferguson, H3

CHANGES TO TECHNICAL ASSISTANCE

Effective February 25th, 2025, HUD technical assistance for the Special NOFO was terminated

The Special NOFO projects Contra Costa was receiving Technical Assistance for:

- CoC Planning – H3
- HMIS – H3
- Thrive CCC – SHELTER, Inc.

H3 will continue to offer support and technical assistance to SHELTER, Inc. as needed

DATA INTEGRATION PROJECT

Kim Thai and Ryan Rae Tapia, H3

DATA INTEGRATION PROJECT

This project expands bi-directional data sharing between HMIS and EPIC to improve care coordination and reduce service duplication for at-risk individuals and those experiencing homelessness. It involves integrating CalAIM/CHW data, creating high-risk notifications, and enhancing communication through in-basket messaging, with training and documentation for all impacted users.

DATA INTEGRATION GOALS

- Expand bi-directional data sharing in HMIS and EPIC to improve care coordination and reduce service duplication.
- Build on existing infrastructure (daily ETL) from Whole Person Care for integration.
- Provide Community Supports and CHW services in 2025 to address the needs of at-risk individuals and those experiencing homelessness.

DATA INTEGRATION FLOW

HMIS Data loaded into EPIC

- Program Contact Info (static table)

Future state would include:

- CalAIM assessments/services/notes
 - Vital docs/pdfs
- Program Contact Info to be dynamic

EPIC Data loaded into HMIS

- CCHP effective date
- CalAIM authorization status and dates
- Limited Case Manager info

Future state would include:

- Expanded care team
- High risk flag

WHERE ARE WE NOW?

- Significant portions of this project is still in the discovery phase, with key elements and workflows being refined and finalized.
- Expanding our capabilities to increase visibility of information and enhance care team information sharing between systems.
- High Risk Notifications – When a H3 client is seen in an ED/IP/Detention, a High Risk Event flag is added to their HMIS profile, triggering H3 staff follow-up on discharge planning, transportation, and referrals to ensure post-discharge support.

STAKEHOLDER SPOTLIGHT: YOUTH ACTION BOARD (YAB)

Juno Hedrick, *Lived Experience Advisor and Vice Chair
and YAB Lead*

Leon Saelee, *YAB Lead*

YOUTH EMPOWERMENT SUMMIT (YES)

- ❧ Annual event hosted by the California Coalition for Youth in Sacramento.
- ❧ Brought together young people, community leaders, and youth service providers from around California to explore, learn, share, advocate, and work collectively to prevent, intervene, and end youth homelessness.
- ❧ YAB and RYSE Center represented Contra Costa County!



YES DAY 1:

Focused on the plans and structure for the Legislative Meetings at the Capitol.

- 🔗 Reviewing the agenda and workshops
- 🔗 Learning about Advocacy 101
- 🔗 How to network with providers
- 🔗 Structure and guideline for capital meeting



YES DAY 2: DEVELOPMENTAL SKILLS FOR YOUNG PEOPLE, COMMUNITY LEADERS, & SERVICE PROVIDERS

**Trauma-Informed
Care:** Shelter
Programs, Support for
Foster Youth

Suicide Prevention/ 988

Community Care
Licensing: Hot Topics
for Youth
Homelessness
Prevention Centers

Leadership: How You
Lead is How You
Succeed, Power in Our
Hands

R.A.P Rhythm and
Poetry and Public
Speaking

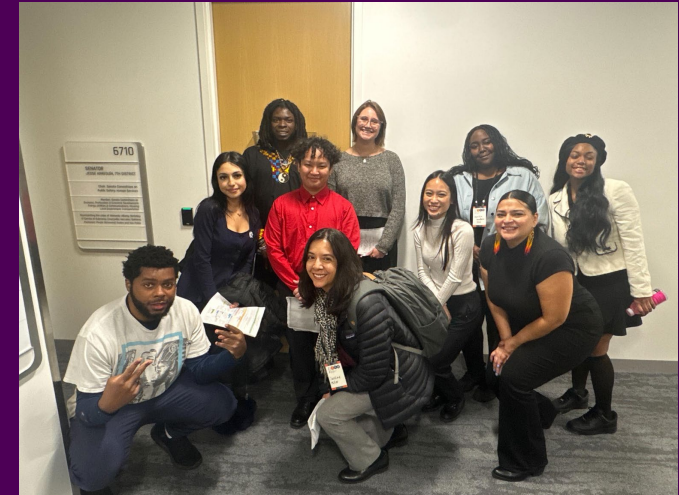
Housing for Health with
California Department
of Health Care Services

Wellness: Decompress
with a Game, Mindful
Movement & Outdoor
Mindfulness, and more!

Keynote speaker,
Stephani Ellison, and
award luncheon

YES DAY 3: RALLY AND LEGISLATIVE VISITS

- 🔗 Walked and chanted together in support of policies that affect youth experiencing homelessness.
- 🔗 Met with local assembly members, senators and staff to discuss goals and policies.
- 🔗 Worked in collaboration with other YABs to advocate as well as strengthen connections.



KEY TAKEAWAYS

- 🔗 Advocacy and support in collaboration with peers and adult allies
- 🔗 Uplifting community connections, being present in our work and creating space for joy
- 🔗 Skill building and professional development



NEXT STEPS FOR YAB

Informing Contra Costa YAB

- 🔗 Using information gathered during summit to create awareness upon updates and current sources

Using Guidelines and Workshops

- 🔗 Building structure and team bonding

Continuing Advocacy

- 🔗 Expanding resources and programs to advocate upon policies for homeless youth

Plans to return to 2026 YES Conference!



ANNOUNCEMENTS

NEXT STEPS

Matt Lemon, Focus Strategies

UPCOMING MEETINGS

- May 15, 2025 (Committee Meeting)
- June 19, 2025 (Working Group Meeting)
- July 17, 2025 (Working Group Meeting)



PLAN FOR ACCELERATING TRANSFORMATIVE HOUSING (PATH) INNOVATIONS COMMITTEE MEETING

COMMITTEE MEETING MINUTES

DATE: Thursday, February 20th, 2025, 9:30 am – 11:00 am

RECORDING OF MEETING:

https://us02web.zoom.us/rec/share/rP9ayLJKO-6KU9rDZ_KEdyb_K6moaemcgWEONIP7zvGebW9Y_HpcmWEf1isFyi-2.dBhVxd1aMSkL0CsS?startTime=1740072830000

PASSCODE:

@U7bXQp!

| Time | Agenda Item | Presenter/Facilitator |
|-------|--|---|
| 9:30 | Welcome and Introductions | - Matt Lemon, Focus Strategies |
| | Hybrid Meeting Norms | - Matt Lemon, Focus Strategies |
| | Review and Approval of Minutes | - Matt Lemon, Focus Strategies |
| | Public Comment – Open Period for public comment on items discussed or not listed on the agenda. | - Members of the public |
| 9:55 | Point in Time Count Update – Update on count completed in January 2025 | - Jamie Schechter, H3 |
| 10:00 | Unsheltered Data Dashboard – Quarterly review of unsheltered metrics | - Jamie Schechter, H3 |
| 10:15 | Coordinated Entry Highlight: Program Referrals From Unsheltered Status – Update on recent referrals to new PSH Projects from Unsheltered Status | - Mary Juarez-Fitzgerald, H3 |
| 10:30 | Stakeholder Spotlight: Housing Consortium of the East Bay (HCEB) – Next Step Interim Housing Program | - Darin Lounds, HCEB - Chaeanna Williams, HCEB - Mary Juarez-Fitzgerald, H3 |
| 10:50 | Announcements | - All |
| 10:55 | Next Steps | - Matt Lemon, Focus Strategies |



PLAN FOR ACCELERATING TRANSFORMATIVE HOUSING (PATH) INNOVATIONS COMMITTEE MEETING

Welcome and Introductions

Committee Members in Attendance: Shawn Ray, Leanne Matthews, Juno Hedrick, Wayne Earl

Staff and Consultants: Jamie Schechter (H3), Mary Juarez-Fitzgerald (H3), Janel Fletcher (H3), Stephanie Bodisco (H3), Matt Lemon (FS), Claire Burrus (FS)

Additional Attendees: Giovanni Velasco Morales, Chaeana Williams, Brianna Ramos, Camille Cooley, Carmen Cano, Lynna Magnuson, Marichelle Alcantara, Olivia Henderson, Kristin Kane, Darin Lounds

Hybrid Meeting Norms

Matt Lemon described hybrid meetings norms including a recommendation to wear masks in person, practicing social distancing, raising your hand, saying your name before speaking and maintaining a safe and respectful environment. Individuals who behave in a manner that threatens the safety of the group or that does not honor meeting norms may be asked to leave.

Review and Approval of Minutes

Wayne Earl made a motion to approve the minutes from December 19, 2024. Shawn Ray seconded the motion. There was no discussion. The motion passed unanimously with four votes in favor and zero votes against.

Public Comment

No public comment was offered.

Point in Time Count Update

Jamie Schechter shared a few photos from the unsheltered Point in Time Count and offered appreciation to the San Pablo Police Department, Contra Costa Health, the Brentwood Police Department, the Contra Costa Department of Information Technology, and the over 150 volunteers who participated in the count. Jamie Schechter noted that Point in Time Count surveys would be administered in the upcoming week and that data would be released in Spring 2025. She also noted that H3 received positive feedback from surveys collected from volunteers.

Unsheltered Data Dashboard

Jamie Schechter presented data several quarterly metrics, including data on prevention, evictions, and Rapid Exit. Jamie Schechter shared that between October and December 2024, 99% of households exiting prevention services exited to temporary or permanent housing. She noted that Catholic Charities accounts for a majority of prevention services in this quarter due to acquisition of new funding. Jamie Schechter shared that between October and December 2024, 273 eviction notices were served – a decrease from the prior quarter. Jamie Schechter shared that 100% of 38 people exited from rapid exit



PLAN FOR ACCELERATING TRANSFORMATIVE HOUSING (PATH) INNOVATIONS COMMITTEE MEETING

programs exited successfully between October and December 2024. She noted that the only current provider of rapid exit programs is Hope Solutions.

Juno Hedrick inquired about the Hope Solutions rapid exit program. Jamie Schecter shared that the program uses the Keep People Housed program and prioritizes participants based on several vulnerability factors including eviction history and health conditions. She noted that funding for this program goes quickly.

Wayne Earl noted that although eviction data can serve as a useful upstream indicator for people with leases, many people who enter homelessness in the community are not recent lease holders. He inquired as to whether any other upstream indicators might be considered to more comprehensively cover the various circumstances of people at risk of homelessness in the community. Jamie Schecter recommended that the Committee review insights from a recent UCSF report about homelessness in California for more information. Mary Juarez-Fitzgerald noted that the upcoming prevention tool pilot would collect data on whether applicants were lease holders, and that data collected with the tool could be reviewed by the Committee in the near future.

Coordinated Entry Highlight: Program Referrals From Unsheltered Status

Mary Juarez-Fitzgerald shared recent referral data for three Permanent Supportive Housing programs in the community. She reviewed the number of referrals made to each program and the shelter status of each individual referred to the program. She shared that 54 referrals were made to El Portal Place, 13 to Rick Judd Commons, and 15 to Valor Village. The percentage of participants referred from unsheltered status ranged from 40 to 54%, with the remainder of referrals for people in shelter.

Wayne Earl noted that El Portal Place took four years to develop. He encouraged the group to consider the array of services available to people experiencing homelessness while Permanent Supportive Housing developments are built. Janel Fletcher recommended that the group review data for scattered-site Rapid Rehousing programs through a similar lens looking at sheltered status prior to referral.

Leanne Matthews inquired whether there is a waiting list for the programs. Mary Juarez-Fitzgerald specified that Permanent Supportive Housing programs receive referrals through the Coordinated Entry System, which generates and maintains a dynamic prioritization list. She clarified that referrals are not pulled on a first-come-first serve basis and as such Coordinated Entry is not conceptualized as a waiting list. Jamie Schecter reminded the group that individual properties may have waitlists separate from the Coordinated Entry System for units not specifically dedicated to Coordinated Entry referrals.

Leanne Matthews shared that she knows a few people who have recently moved into El Portal Place and were able to be housed next door to one another. She shared that being housed alongside people they already knew was helpful for their transition process.

Wayne Earl inquired about the options available in the County for people who are not able to self-resolve but are also not considered to have high enough vulnerability to be prioritized for Permanent



PLAN FOR ACCELERATING TRANSFORMATIVE HOUSING (PATH) INNOVATIONS COMMITTEE MEETING

Supportive Housing and Rapid Rehousing programs. He expressed interest in learning more from Bay Area Community Services about the services they provide. Jamie Schechter indicated interest in discussing the potential service gap further and reviewing more of the other service types available, such as bridge to PSH, Rapid Rehousing, and Shallow Subsidy programs. She also noted that the system has focused many resources on prevention to try to address homelessness in a more upstream manner. Wayne Earl noted that the longer people experience homelessness, the more trauma is incurred.

Shawn Ray inquired about the cost effectiveness of Permanent Supportive Housing programs such as El Portal Place, which Jamie Schechter noted cost \$400,000 per door to build. He asked what happens when residents no longer require the level of care that Permanent Supportive Housing provides. Jamie Schechter shared that “move on” programs have been used to support people to exit Permanent Supportive Housing programs with vouchers such as Emergency Housing Vouchers. She noted that many participants maintain service needs indefinitely, however. Mary Juarez-Fitzgerald shared that many people prioritized for Permanent Supportive Housing are seniors or people with disabilities living on fixed incomes or those who may benefit from aging in place.

Stakeholder Spotlight: Housing Consortium of the East Bay

Chaeanna Williams and Marichelle Alcantara with the Housing Consortium of the East Bay (HCEB) provided a presentation alongside Mary Juarez-Fitzgerald from H3 on the Next Step Interim Housing Program recently launched by HCEB.

Marichelle Williams shared that HCEB provides services to extremely low-income individuals with developmental disabilities, serious mental illnesses, other special needs, and histories of homelessness. The services that HCEB provides for people experiencing homelessness include safe parking, a tiny home village, shelter, street outreach, and resource centers. All the services provided by HCEB are low barrier, offer individualized support, and are focused on long-term stability and well-being.

Chaeanna Williams provided a brief presentation on the Next Step Interim Housing Program, a pilot program offered in partnership between HCEB and H3 operating out of Concord. She shared that the program launched on January 1, 2025, and has already reached full capacity across 38 rooms. The purpose of the program is to provide trauma-informed, safe interim housing to facilitate the transition of individuals from homelessness to permanent housing.

Mary Juarez-Fitzgerald shared that eligibility for the interim housing program is limited to people experiencing homelessness with an identified housing solution. The first group prioritized for the pilot are people enrolled in emergency shelter, to promote flow through the system. She shared that the program has no maximum length of stay, however each household's stay is reassessed every 30 days. She shared a few success stories from the program.



PLAN FOR ACCELERATING TRANSFORMATIVE HOUSING (PATH) INNOVATIONS COMMITTEE MEETING

Wayne Earl asked whether the program residents were already receiving support from other programs prior to enrolling in the interim housing program. Mary Juarez-Fitzgerald shared that some were and some were not already connected with other services.

Juno Hedrick inquired about the temporary nature of the Next Step program for participants who lose the housing opportunity they had identified when they entered the program. They asked whether people in these circumstances might stay at Next Step indefinitely. Mary Juarez-Fitzgerald shared that the priority is to ensure that people in these circumstances do not exit to unsheltered homelessness, and that participants and HCEB staff will discuss alternative housing options in a best effort to exit to housing. Chaeanna Williams noted that HCEB meets not only with clients but also with landlords and property management companies to match clients with the best options available for them, which helps promote flow through the program.

Juno Hedrick asked how the Next Step program is introduced to prospective participants. Jamie Schecter indicated that a shelter case manager can bring the program up as an option in a case management meeting. Juno Hedrick raised the potential risk of individual staff members' judgements playing a role in who is and is not offered the program. They shared a bit of their lived experience regarding opportunities like this being used as an incentive or reward for certain types of behavior in shelter settings. Mary Juarez-Fitzgerald specified that only people in shelter with already identified housing solutions would be eligible for the program. She shared that shelters have been directed to offer Next Step openings, when available, to all shelter residents with a housing solution identified. She also shared that some people may opt to stay in shelter given that there is a higher level of care available in shelter and based on individual preferences and circumstances. For example, Next Step does not provide transportation support that shelters may. This could be a determining factor for some residents.

Announcements

No announcements were made.

Next Steps

Matt Lemon stated that the next scheduled meetings are a Working Group meeting on March 20, 2025, a Working Group meeting on April 17, 2025, and a Committee meeting on May 15, 2025.

The meeting adjourned at 10:30 a.m.



CONTRA COSTA COUNTY

1025 ESCOBAR STREET
MARTINEZ, CA 94553

Staff Report

File #: 25-1478

Agenda Date: 4/17/2025

Agenda #: 4.

Advisory Board: Contra Costa Council on Homelessness PATH Innovations Committee 4.17.25 WG

Subject: **Conference Updates**

Presenter: *Jamie Schechter, H3; Shelby Ferguson, H3; Mary Juarez-Fitzgerald, H3*

Contact:

Information: Reflections on the recent Housing California Conference and National Alliance to End Homelessness Conference

Referral History and Update:

Recommendation(s)/Next Step(s): Receive information

5.08 Early Lessons from California's ERF & the Unsheltered NOFO



Mike Savara

Oregon Housing and Community Services

Jenny Robbins

Contra Costa Health Services

Kimberly Barnette

LA County Chief Executive Office

It is increasingly important for CoCs to proactively respond to encampments with housing and services. Learn from communities that have received federal and state funding for these efforts. See how they put these funds to use, what outcomes resulted, and what they will do to further improve their efforts.





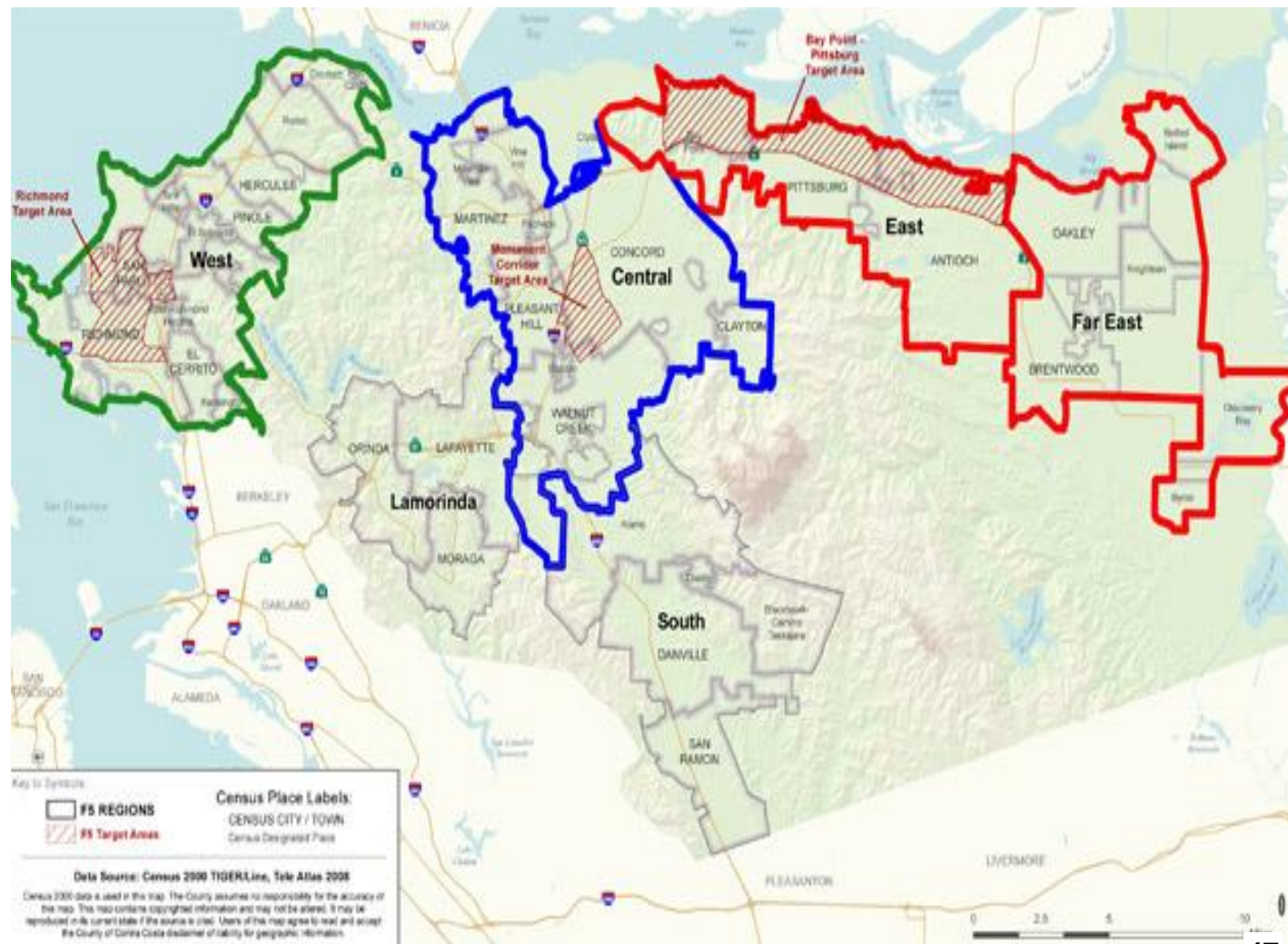
cchealth.org

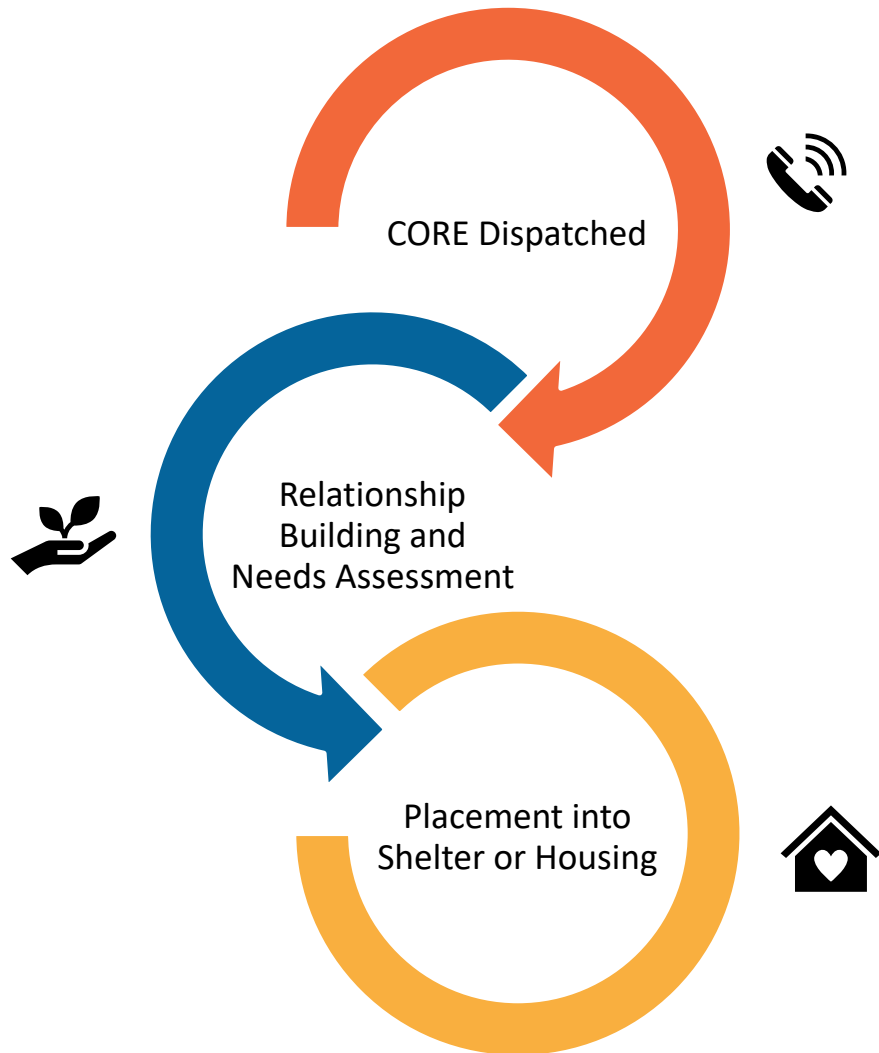
Encampment Resolution Solutions: Contra Costa County

Jenny Robbins, LCSW
Chief of Programs
Contra Costa Health

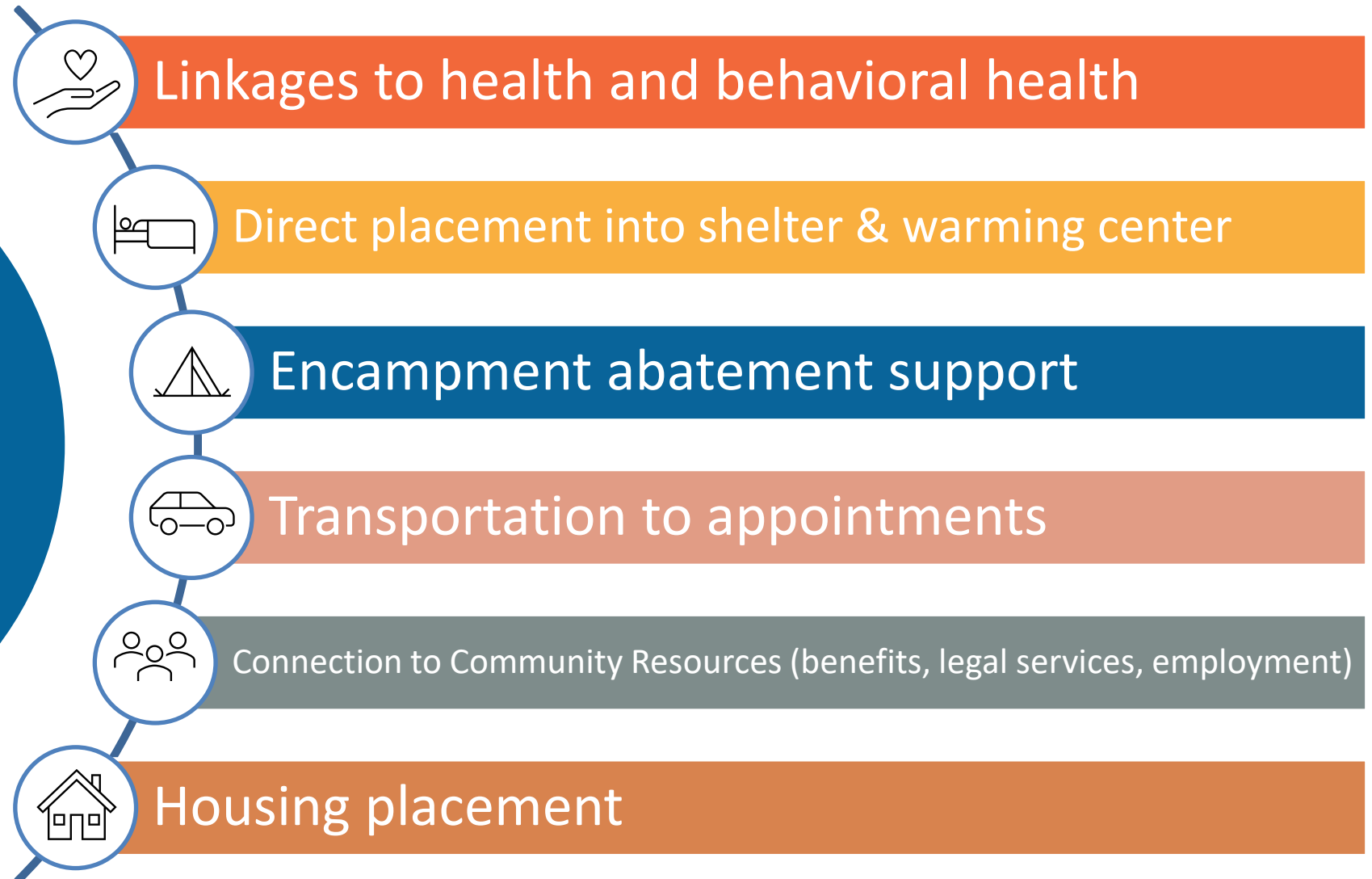


Get to Know Contra Costa





Housing Focused Street Outreach



City/County Partnership



Encampment Resolution Contra Costa Model



Contra Costa ERF Awards

ERF 1
Richmond
\$4.8M

ERF 2R
Richmond
\$8.6M

ERF 3
Contra Costa
\$5.7M

ERF 3
Antioch
\$6.8M

**Total ERF to Contra Costa
\$25.9 Million**

**ERF 1 City of Richmond –
Castro St.**



**ERF 2 City of Richmond,
CalTrans**



**ERF 3 Contra Costa County, San
Pablo**



**ERF 3 City of Antioch, Sunset
Ave**





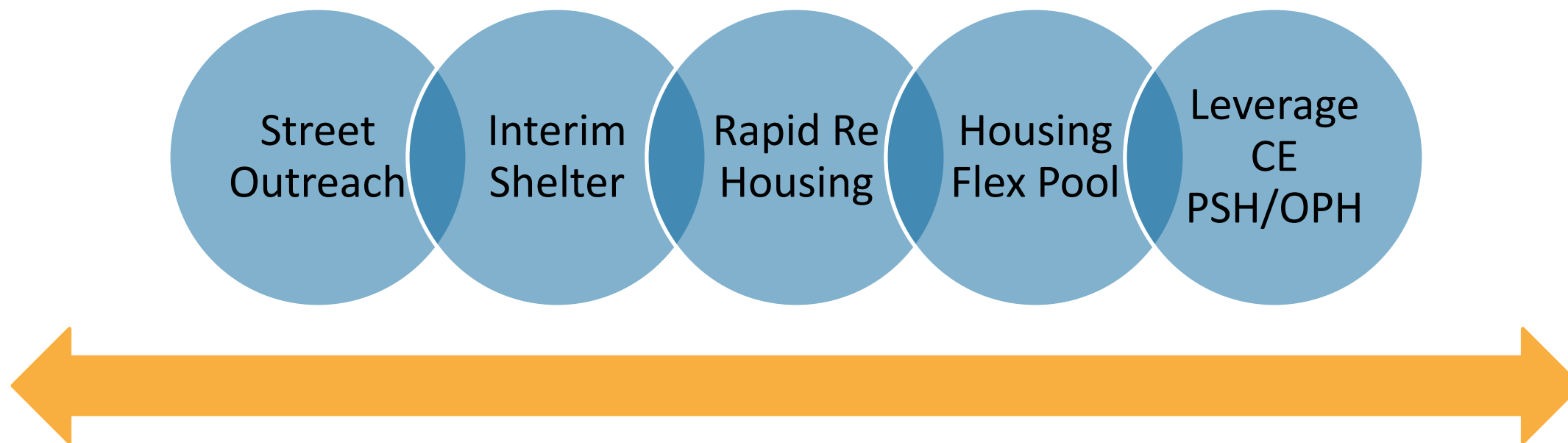
The Foundation







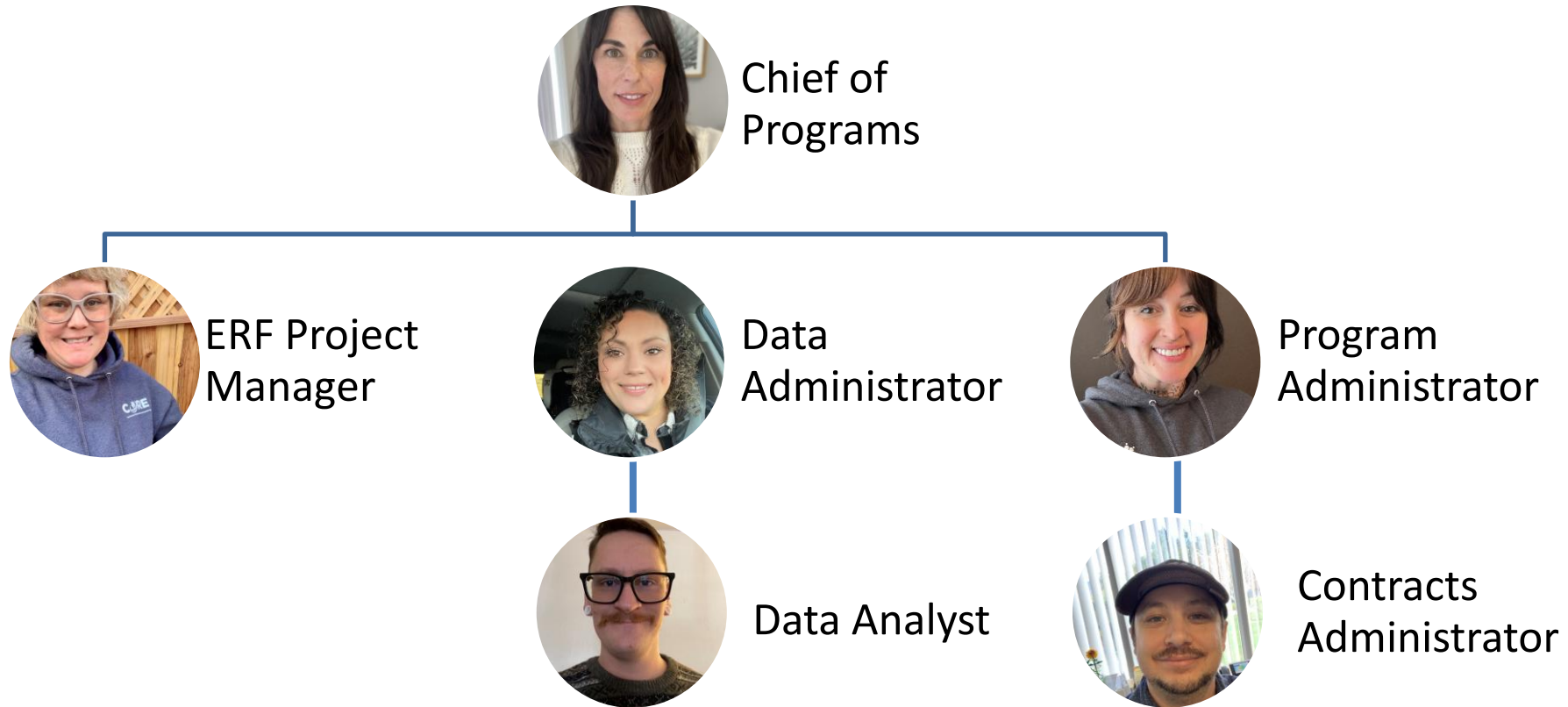
Foundation of Model



Meet the Team



Contra Costa ERF Administrative Support Team



Person-Centered Housing

Interim Housing



Trauma Informed Spaces



Permanent Housing



Leveraging Resources

HUD/CoC

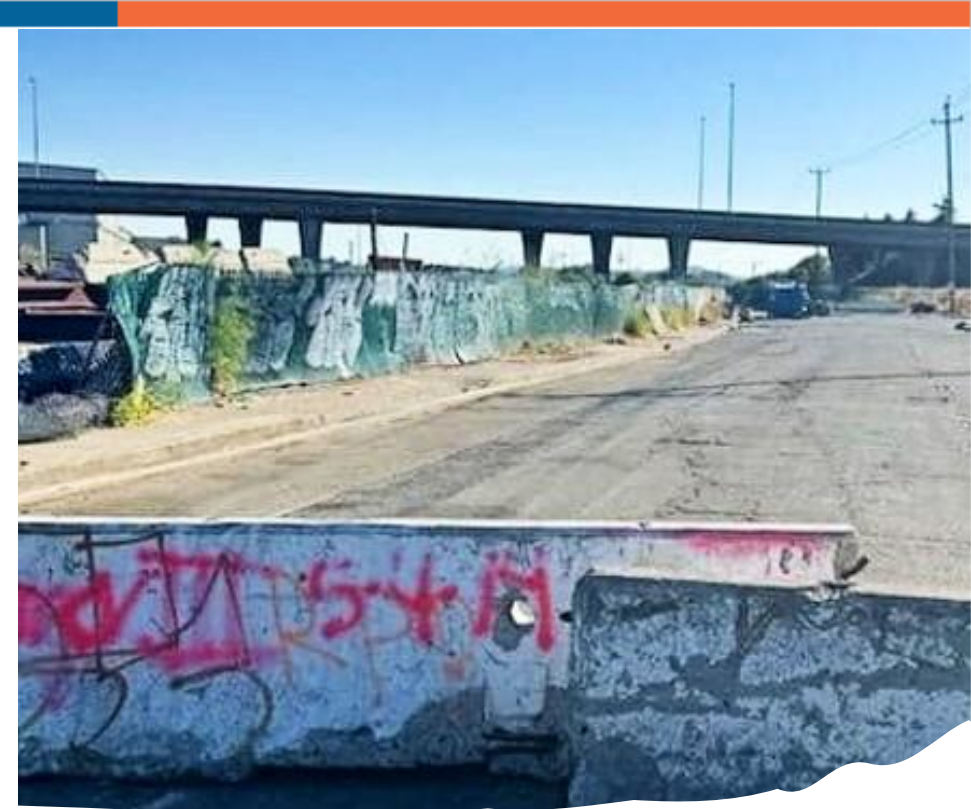
City
Investment

Measure X

CalAIM

State
Funding

SNOFO



**ERF 1 Castro St.,
Richmond, CA**

100+ individuals on location

20 RVs; 30 Cars

COVID Abatement
Moratorium

Animal Control

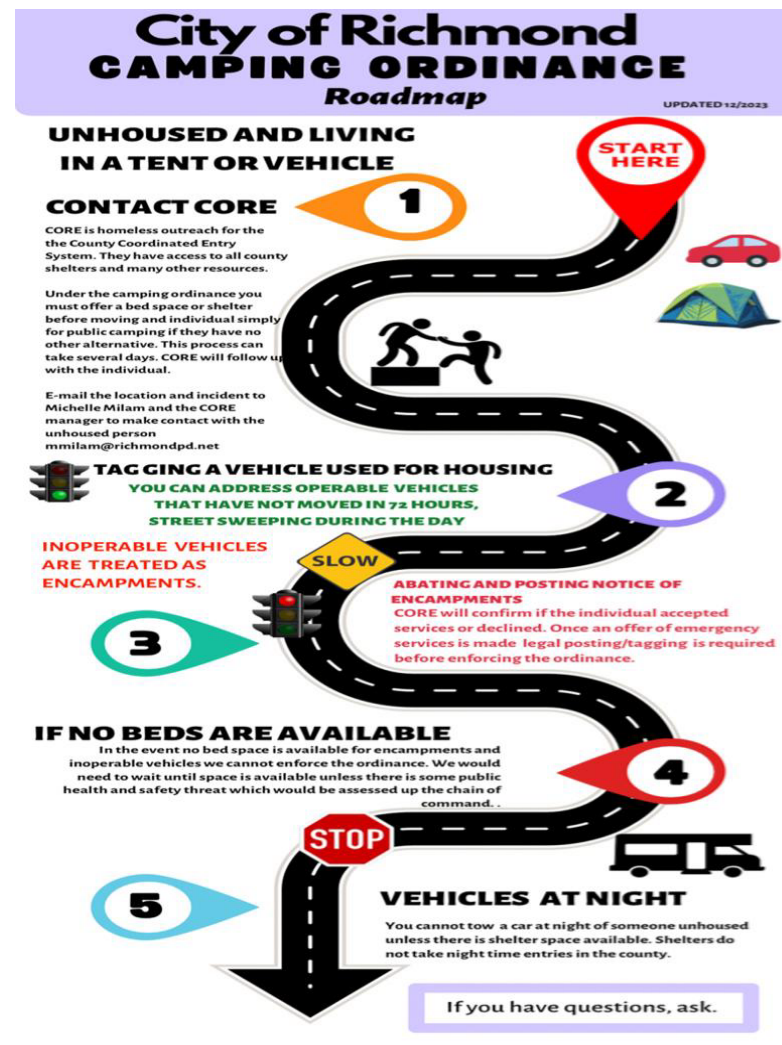
Neighborhood
impact

Criminal
Activity

Health and
Safety



ERF 1 Partnership



Castro Street Encampment

Richmond clears Castro encampment

July 13, 2023

975 0



Curl lauded the work of government, nonprofit and private organizations for efforts to "sunset this encampment in a thoughtful way."



People Served

106 Individuals Served

98% Enrolled in
Transition Care Program

Outcomes

63 (60%)
Exits to Stable Housing

98% Maintained
Housing

1 Return to
Homelessness

Services Provided

198 Housing Navigation
Services

183 Case Management
Services

101 Months of Rental
Assistance



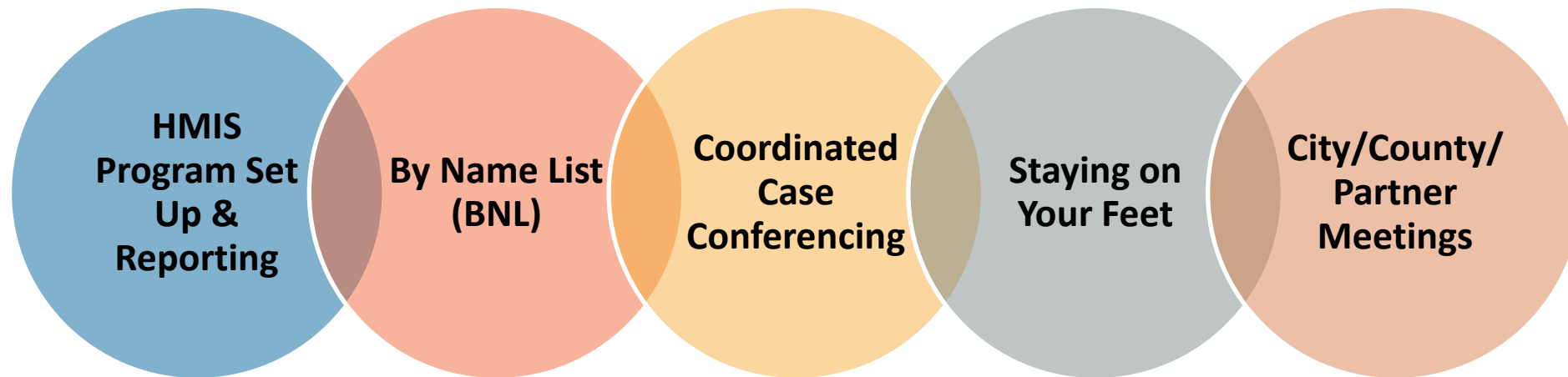
ERF 2-R Richmond Model



ERF 2-R Richmond: A Shift in Approach



Key Ingredients

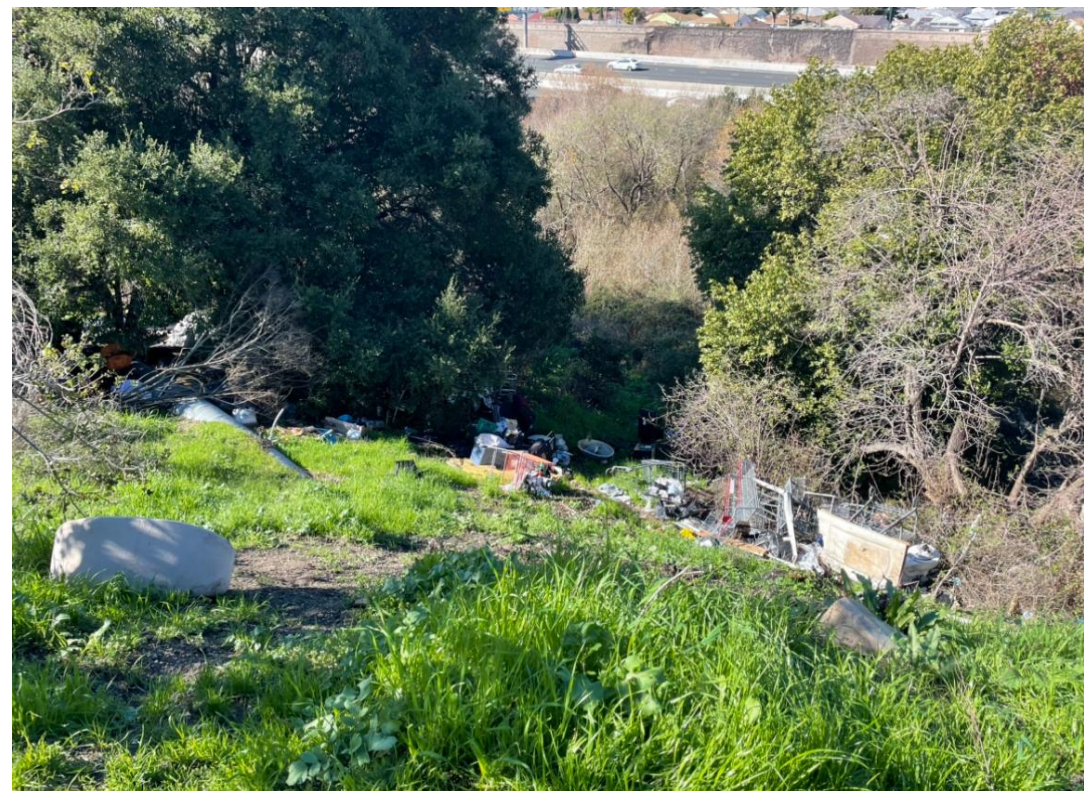


ERF 3-R: San Pablo





Encampment Landscape



ERF 3-R: Encampment Background

30-50
individuals

Behavioral
Health

Chronically
Homeless

Generational
homelessness

Hard to reach



ERF Funded Intervention Types

Street Outreach

Modular shelter

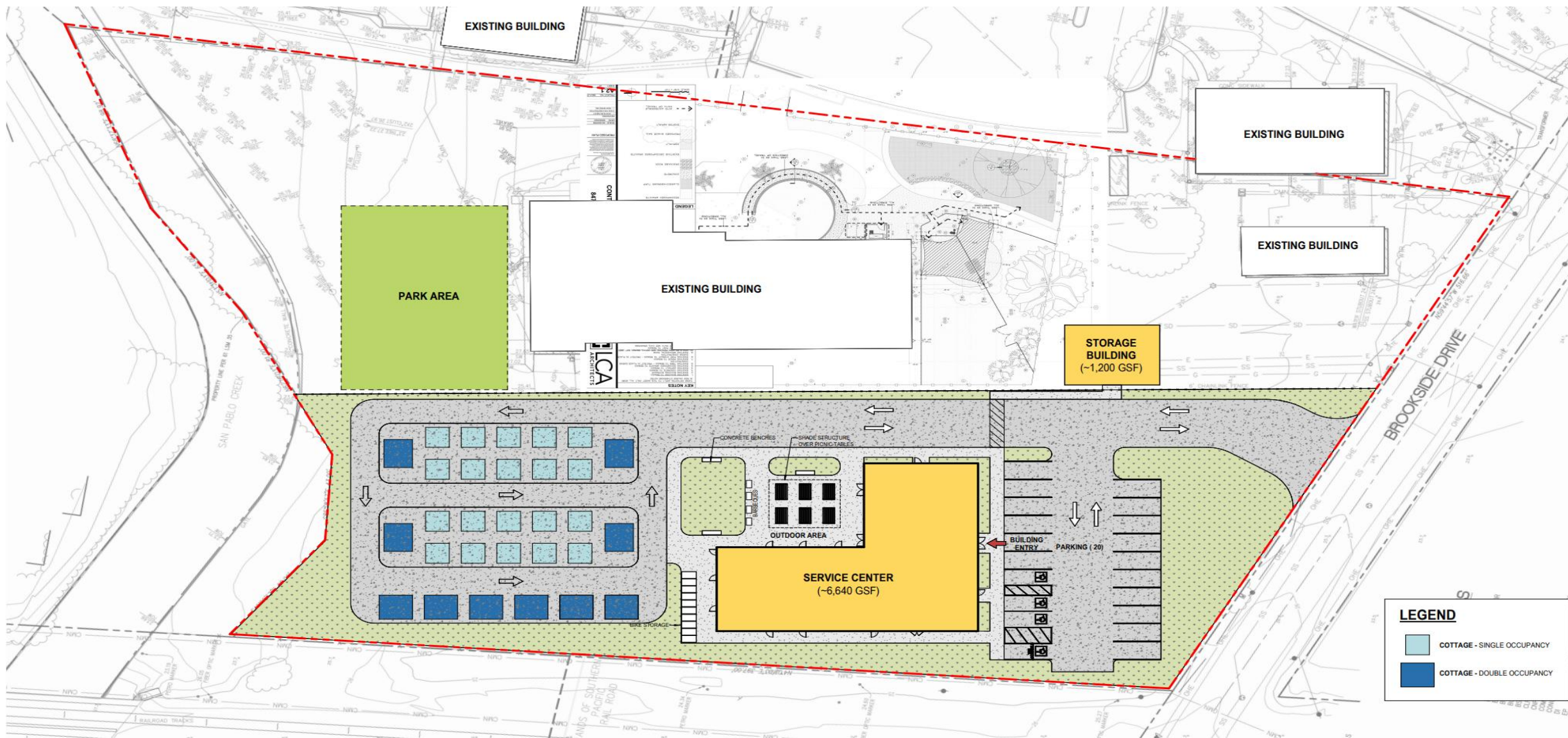
**Rapid
Rehousing +
Shallow Subsidy**

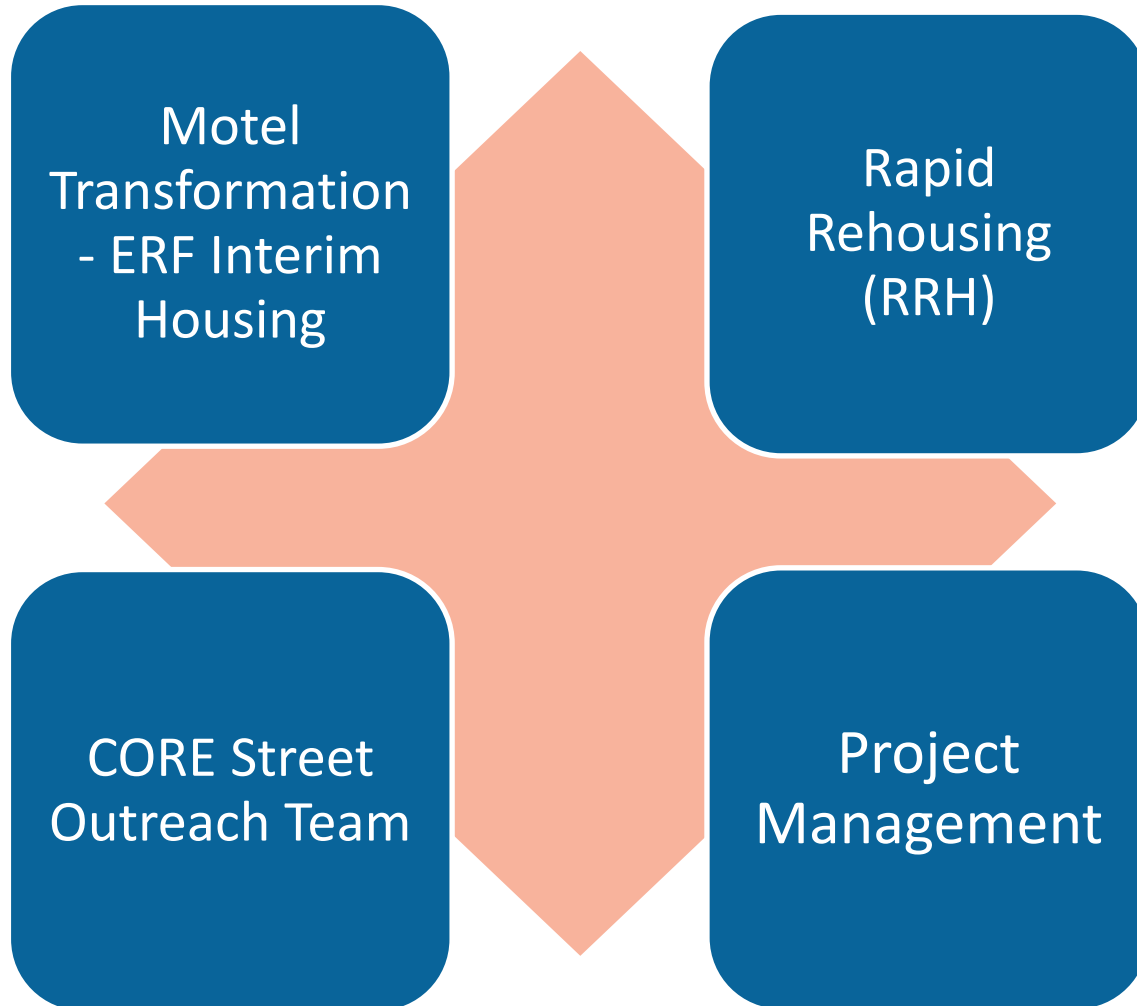
**Housing Flex
Fund**

**Workforce
Development**



Expansion of Non-Congregate Shelter beds



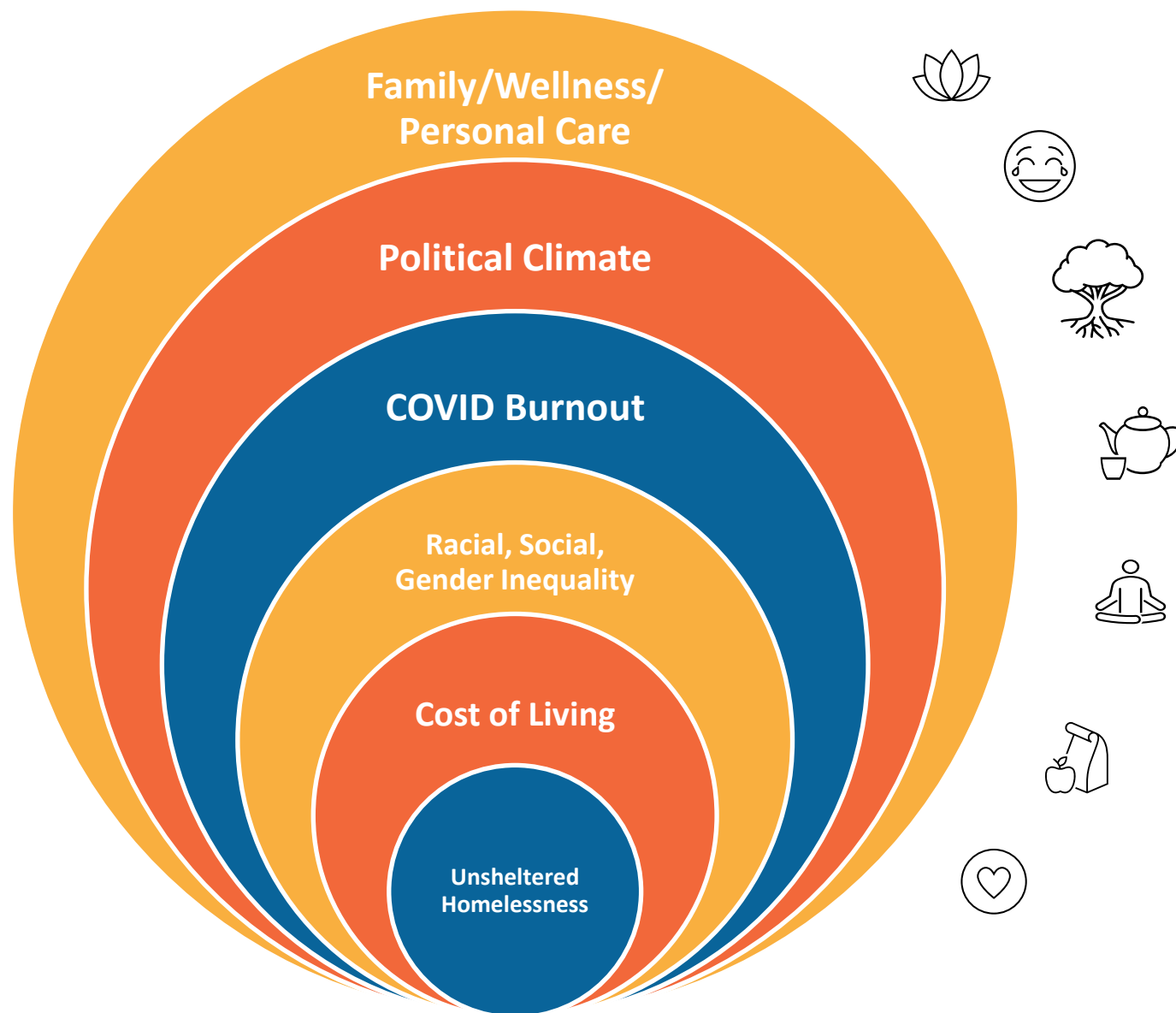


ERF 3-R: Antioch Sunset





Thank you





Chief
Executive
Office.



County of Los Angeles
Homeless
Initiative



Pathway Home

A Los Angeles County-led Partnership
for Encampment Resolution

PATHWAY HOME

ENCAMPMENT RESOLUTION

Kimberly Barnette, Principal Analyst

AGENDA

- 
- 1 What is Pathway Home?
 - 2 Centralize Coordination
 - 3 Pathway Home Interim Housing Model
 - 4 Data

LA County Pathway Home

1 What is Pathway Home?

- A bold approach to reducing unsheltered homelessness in LA County:
- Pathway Home is a **housing-focused, encampment-resolution program** launched as part of LA County's homeless emergency response.
- The program **uses Measure H/A and now State Encampment Resolution Fund (ERF) resources to mobilize a coordinated response** to prioritized encampments.
- It helps **people living on the streets to come indoors**, receive the supportive services they need, and ultimately **move into permanent housing**.
- The program also **returns public areas to clean and usable** community spaces.

LA County Pathway Home

A full-circle solution focused on housing stability:

Encampment Resolution

Unhoused individuals voluntarily choose to leave the encampment.

Interim Housing Options

Every individual is guaranteed placement into interim housing.

Connection to Services

Individuals receive connections to County services to increase income, benefits, and wellness.

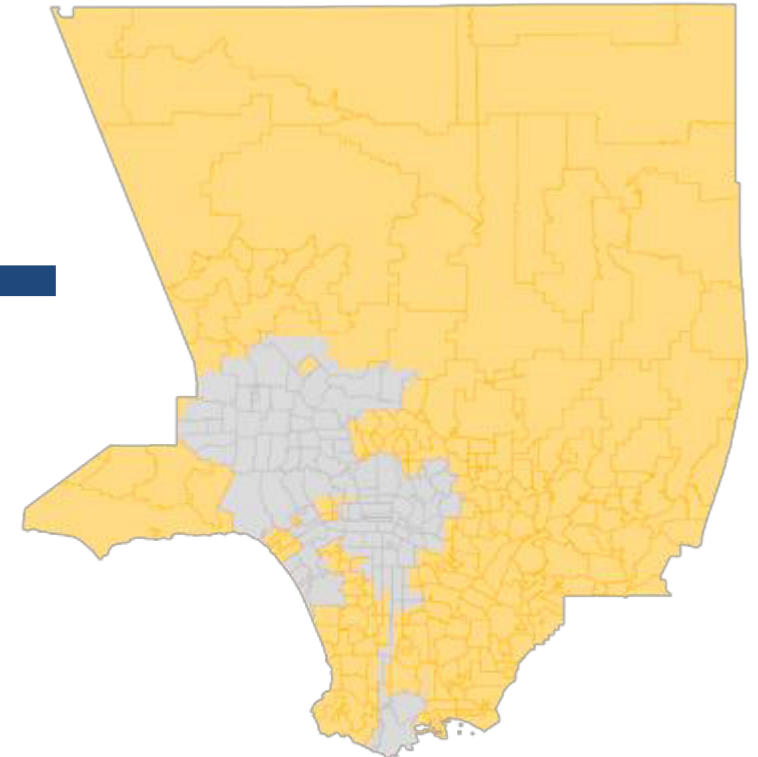
Housing Navigation

Life Skills, Case Management, and Housing Navigation are offered to help people achieve housing stability.

Funded Permanent Housing

People are offered fully-funded, permanent housing.

**87 Cities and
Unincorporated Areas**



LA County Pathway Home

2

Why Here? Why Now?



January 2023: LA County declared a homeless emergency, unlocking new authorities to resolve encampments



August 2023: Pathway Home launched to prioritize encampments in communities that have been disproportionately impacted by homelessness & poverty.



Nov 2023: CA Department of Housing and Community Development (HCD) releases a Notice of Funding for the 3rd round of the Encampment Resolution Funding (ERF) Program.

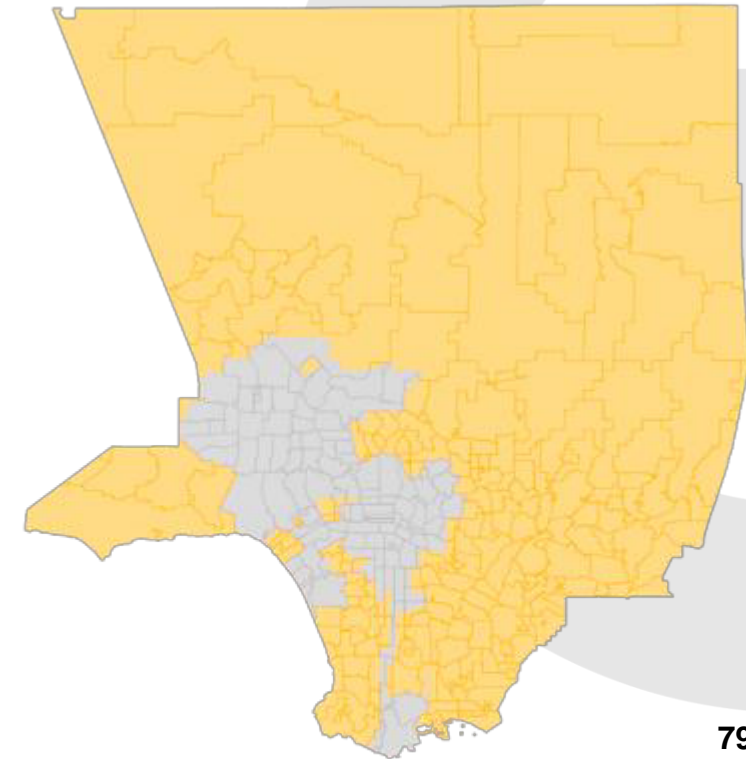


April 2024: LA County receives State award to resolve encampments in communities that have been disproportionately impacted by homelessness & poverty



February – July 2025: LA County is now offering unhoused residents in Countywide Jurisdictions and ERF3 Zones entry into the Pathway Home program.

**87 Cities and
Unincorporated Areas**



Who is involved?

Local Jurisdictions

- LA County Board of Supervisors
- Incorporated LA County Jurisdictions
- CalTrans
- Other Government Agencies

Service Providers

- CBO's

Motel Partners

Los Angeles Homeless Services Authority (LAHSA)

LA County Departments

- Animal Care & Control
- Chief Executive Office – HI
- Chief Executive Office – RED
- Department of Health Services
- Department of Public Health
- Department of Public Works
- Department of Mental Health
- LA Sherriff's Department HOST
- LA County Fire Department

LA County Pathway Home

Completed Operations

| | | | |
|-------------------------------|---------------|---------------------------------------|---------------------|
| UI Lennox / Inglewood | August 2023 | West Rancho Dominguez (RV) | November 2023 |
| Hawthorne | October 2023 | Lynwood | December 2023 |
| Pomona | November 2023 | Florence/Firestone & Walnut Park (RV) | December 2023 |
| Tropical Storm Hilary | December 2023 | Long Beach | January 2024 |
| Compton | January 2024 | Signal Hill / Long Beach | March 2024 |
| Santa Monica | February 2024 | Palmdale | July – August, 2024 |
| Monrovia / Duarte | June 2024 | El Monte | November 2024 |
| Inglewood / UI SD 2 | October 2024 | RFK Inspiration Park | December 2024 |
| Florence / Firestone | November 2024 | ERF Zones 1 & 2 | January 2025 |
| ERF Zone 1 – Santa Fe Springs | December 2024 | ERF Zone 5 – Rosa Parks/Willowbrook | January 2025 |
| East Gardena (RV) | August 2023 | SD 1 UI East LA | January 2025 |

Planned Operations

| | |
|----------------------|----------------------------------|
| ERF Zone 4 – Lynwood | ERF Zone 6 #2 |
| ERF Zone 5 & 6 | Unincorporated East Gardena (RV) |



Pathway Home

A Los Angeles County-led Partnership for Encampment Resolution

Leveraging powers under the state of emergency on homelessness declared by the Board of Supervisors in January 2023, Los Angeles County has launched **Pathway Home**, a major expansion of its ongoing efforts to resolve encampments countywide in partnership with local jurisdictions and unincorporated communities.

With Pathway Home, the County will reduce unsheltered homelessness by helping people living on the streets come indoors, receive supportive services they need to achieve housing stability, and ultimately move into permanent housing. These encampment resolutions also seek to restore public spaces to their intended use.

<https://homeless.lacounty.gov/pathway-home>

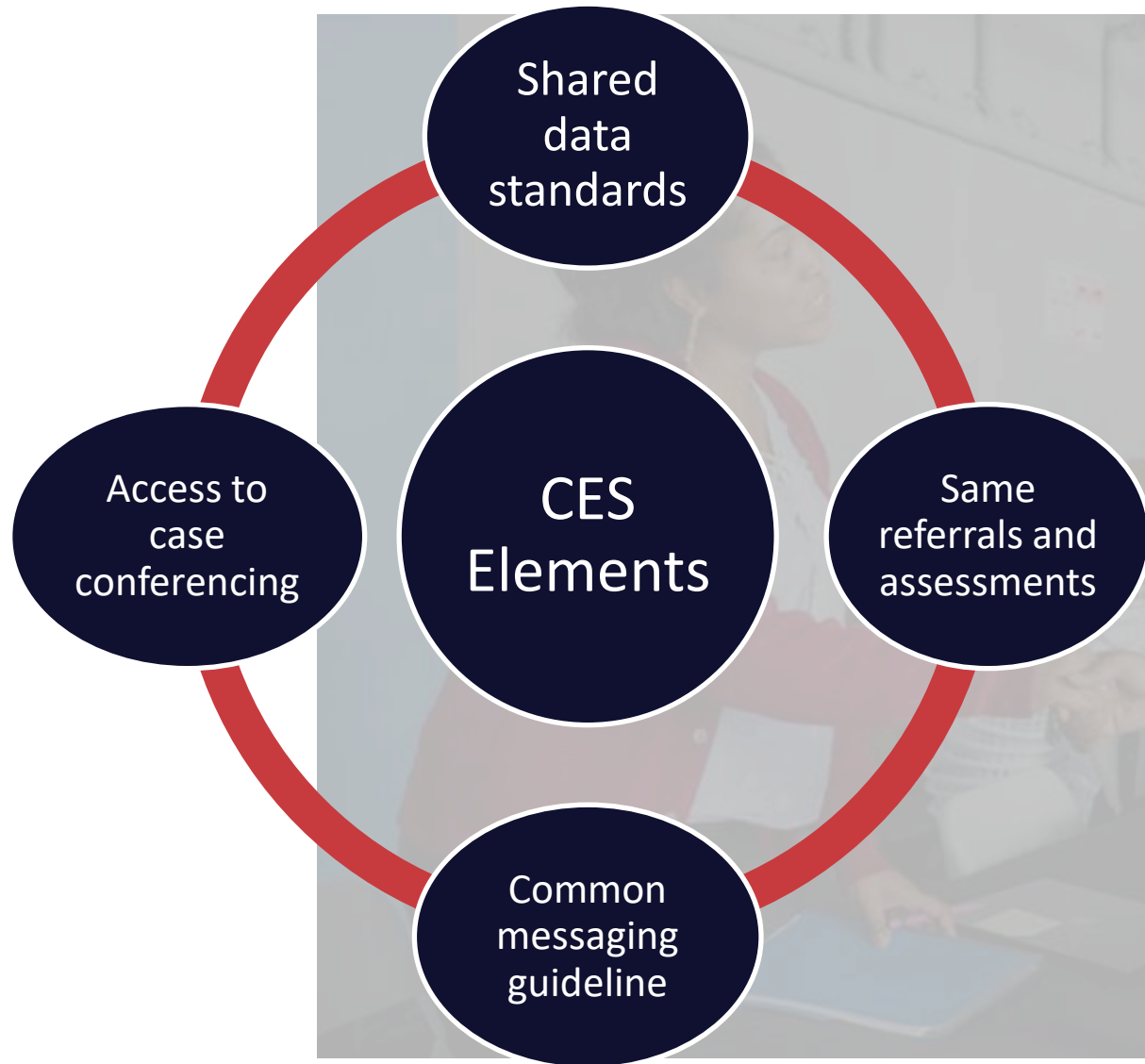


County of Los Angeles

**Homeless
Initiative**

Coordinated Entry System & Outreach Coordination

Leveraging CES for Encampment Resolution

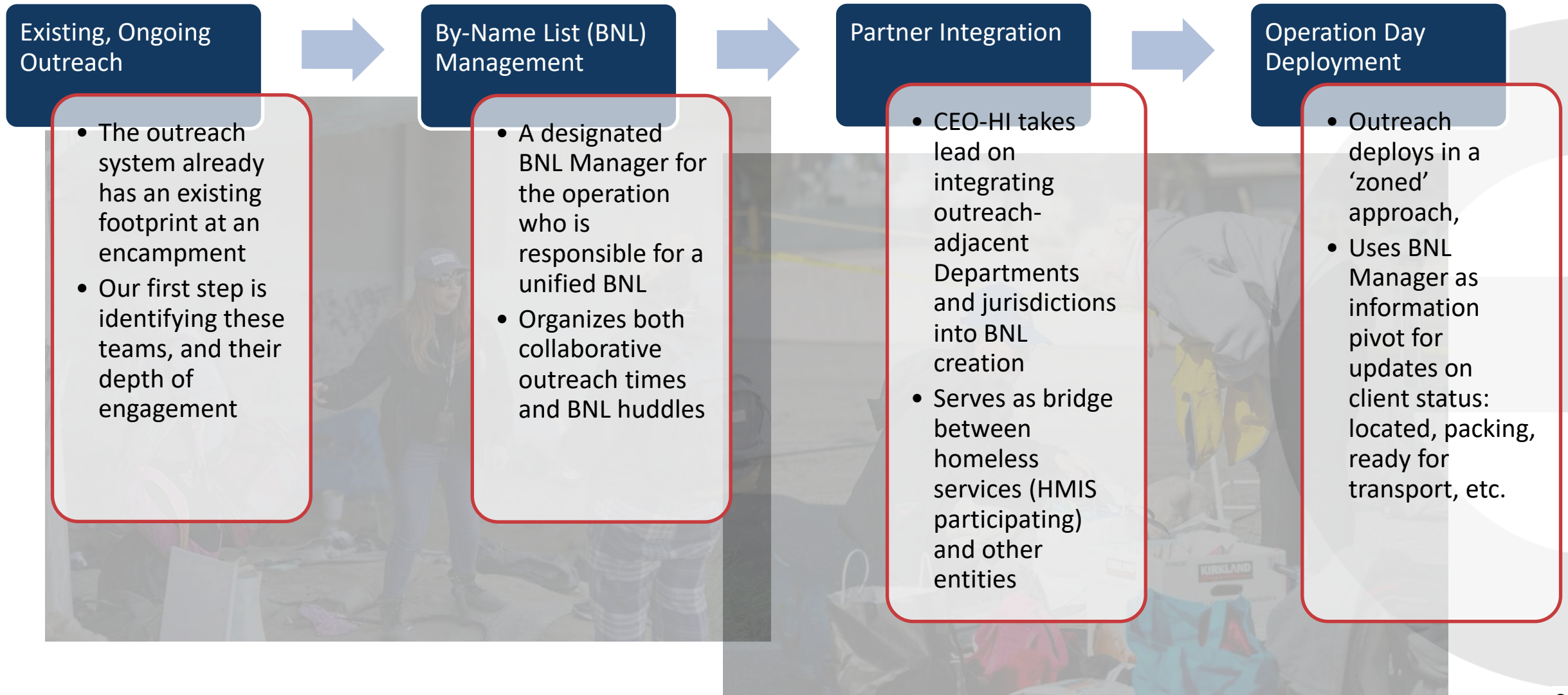


Pathway Home uses the existing Coordinated Entry System infrastructure of the Los Angeles Continuum of Care to integrate with existing system flow and avoid duplication of efforts.

The CES elements we rely on are:

- 1) Shared Data – all outreach uses the same definitions for ‘Contact’ and ‘Service’, and logs all these in HMIS,
- 2) Same Referrals & Assessments – encampment residents access the same resources regardless of what agency their outreach Point of Contact comes from,
- 3) Common Messaging – all outreach teams work under the same approach of what information is shared when,
- 4) Access to Case Conferencing – only CES-affiliated homeless services staff contribute client information during case conferencing.

Outreach Approach and Coordination



Outreach and Messaging Timeline

Street Outreach teams supporting Pathway Home use a Messaging Guide to ensure consistent information across each phase of the Encampment Resolution.

Planning Phase

- Outreach teams assess service needs and interest in various IH options;
- Teams communicate that resources discussed will be specific to this encampment

Response Phase

- ‘Soft’ Messaging: clients informed that resources are being dedicated to this encampment
- ‘Hard’ Messaging: clients assigned a 1:1 relationship with a bed/room and informed they’re confirmed for a resource

Mitigation Phase

- Outreach teams engage clients remaining or newly arrived to encampment - informing them of non-Pathway Home resources.

Street Base Medical and Mobile Teams Response to Encampment Resolution



- Aligning with local and Federal best practices, Pathway Home **leads with outreach and incorporates Field Medicine** teams into the planning process
- Collaborating with field-based medical and behavioral health partners ensures the **most vulnerable participants receive the low-barrier supportive services and care** they need, from the encampments to Interim Housing and beyond.

LA County Multi Jurisdictional Supports

LA County's Collaborative Encampment Resolution Strategy

The Homeless Initiative, under the County's emergency declaration, coordinates with 88 cities, unincorporated areas, and state/federal partners. Our success hinges on:

Intentional City Engagement:
Consistent outreach and communication with city officials pre-, during, and post-Pathway Home.

- Through this, we act as a concierge for City leaders, conduct site tours, work to address negative barriers and views of encampment resolution efforts and troubleshoot concerns that may arise after operations are conducted, and collaborative planning across departments and municipalities.
- Regular data tracking for jurisdictions, reporting and quarterly updates on Pathway Home progress for each jurisdiction.

Targeted Encampment Coordination and By-Name list creation:

- We work with that jurisdictions respective Outreach teams, utilize heat maps, and prioritize that regions high-acuity and high priority participants
- Jurisdictional input is central, working closely with County Supervisors and city elected officials.

Regional Collaboration:

- Multi-jurisdictional partnerships within subregional clusters to maximize resources are pivotal as no one jurisdiction can solve this on their own or may not have the resources to do so.
- We coordinate within subregional clusters and leverage regional outreach teams, deployment sites, and interim housing to facilitate operations.

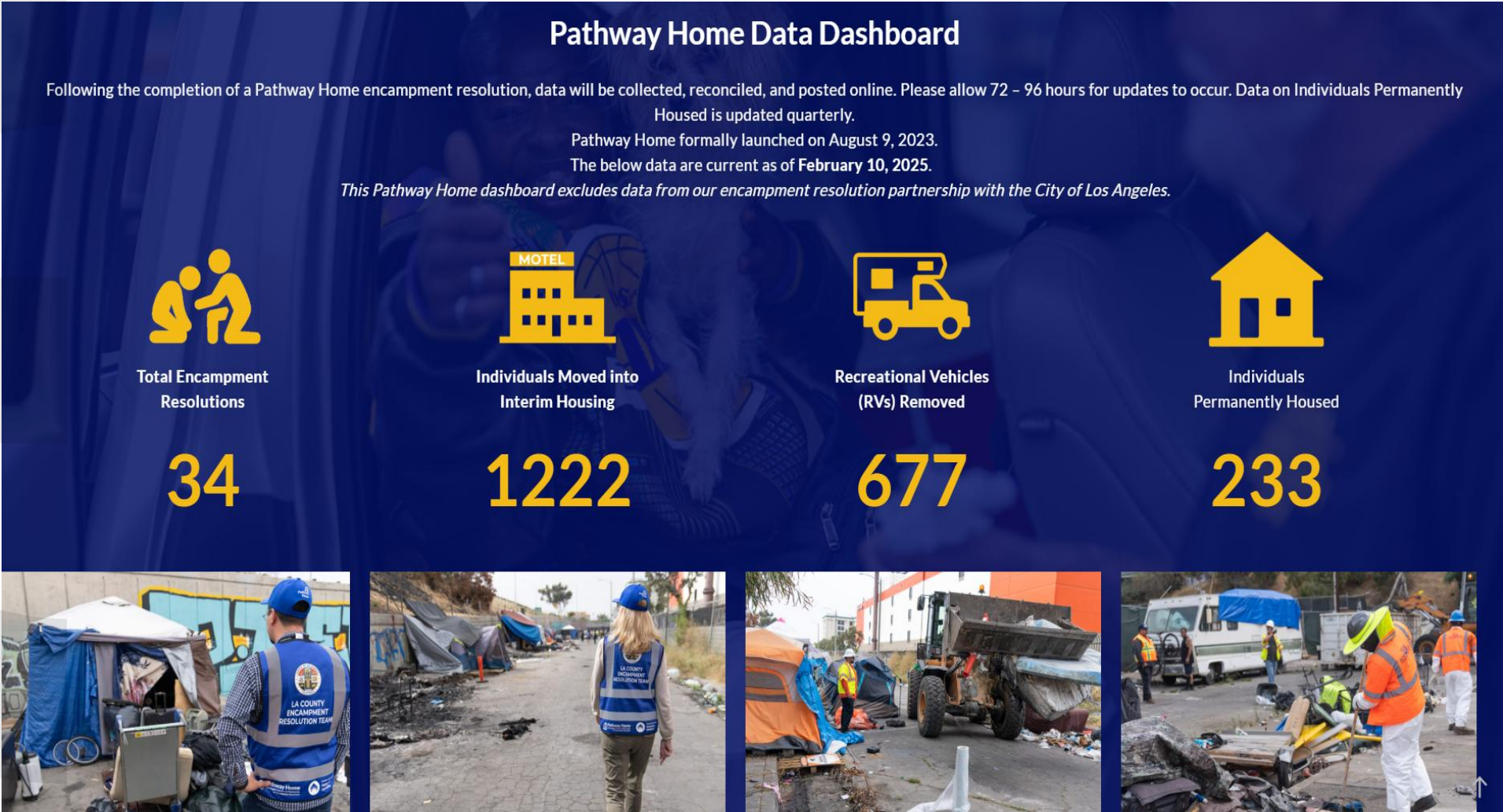


County of Los Angeles

Homeless Initiative

Data

LA County Pathway Home



Data Integration

Planning Stage

Use **ARDI Equity Explorer** tool to inform how we prioritize regions based on community need

Outreach Coordination creates a **hotspot map** noting all recent outreach contacts to help us build our BNL for region we're looking to address

Leverage HMIS and outreach staff to collect demographic, pet, medical vulnerabilities, and location to populate BNL to plan for Interim Housing and long-term needs



Post-Resolution

Migrate clients into **participant database** to be able to track participant throughput and do data analyses to continuously improve the program.

Utilize County databases to track **connections to vital county services** post Service Connect Event.

Send municipal partners quarterly reports to promote transparency

Data Analysis: Racial/Ethnic Equity

Pathway Home: Share of Race/Ethnicity by SPA

| SPA | African American | American Indian, Alaskan Native | Asian | Data not collected | Latino/a/x | Native Hawaiian | White | Grand Total |
|--|------------------|---------------------------------|--------------|--------------------|---------------|-----------------|---------------|----------------|
| 1 | 35.50% | 1.00% | 0.50% | 1.00% | 24.50% | 1.50% | 36.00% | 100.00% |
| 3 | 11.59% | 3.86% | 1.45% | 1.45% | 49.76% | 0.00% | 31.88% | 100.00% |
| 4 | 22.22% | 0.00% | 11.11% | 11.11% | 33.33% | 0.00% | 22.22% | 100.00% |
| 5 | 31.11% | 0.00% | 4.44% | 2.22% | 15.56% | 0.00% | 46.67% | 100.00% |
| 6 | 39.13% | 1.45% | 1.45% | 5.07% | 36.23% | 0.00% | 16.67% | 100.00% |
| 7 | 22.02% | 2.98% | 0.60% | 10.12% | 50.00% | 0.00% | 14.29% | 100.00% |
| 8 | 39.76% | 1.18% | 0.00% | 2.36% | 35.43% | 1.97% | 19.29% | 100.00% |
| CEO Approved Placements | 33.33% | 0.00% | 0.00% | 0.00% | 66.67% | 0.00% | 0.00% | 100.00% |
| Grand Total | 29.71% | 1.94% | 0.97% | 3.59% | 38.06% | 0.78% | 24.95% | 100.00% |
| Variation from Actual racial/ethnic share by region | -2% | 0% | -1% | | 4% | 0% | -5% | |

Findings:



- Overall, we're doing a good job!**
- We must be mindful during refill efforts**
- We sometimes struggle with replacing relinquishments with similar folks**


LA County Pathway Home – Service Connection

The County's Service Connection Day aims to support encampment resolution clients in Interim Housing toward permanent housing solutions and supports.

- Occurs at interim housing the site 2-3 weeks after move-in day
- It is an opportunity to:
 1. Mobilize various County departments to activate a centralized day of resource navigation at the site where PEH are newly housed
 2. Get people document-ready so they can be connected to permanent housing resources.
- It's facilitated by CEO-HI with robust collaboration across multiple County Departments and partner agencies.

Service Connection Day



Abc Xyz Motel
9:00 am – 2:00 pm  **Friday**
December 15, 2023



Los Angeles County's **Pathway Home** program helps people move from encampments into interim housing and provides participants like you with a comprehensive set of supportive services while we work together on your permanent housing plan.

Service Connection Day is essentially a one-stop-shop for **Pathway Home** participants to sign up for various essential services and programs you may need or want – conveniently located at the interim housing site!

You're just footsteps away from life-changing services and support like:

- Medical care and treatment
- Mental health care
- Substance use disorder treatment
- Immigrant services
- Free cellphones and tablets
- Free identification card
- Birth certificate services for LA County-born participants
- Benefits Enrollment
 - Social Security Income (SSI)
 - Social Security Disability Insurance (SSDI)
 - General Relief
 - CalFresh
 - Medi-Cal
- Free/discounted rides from Metro
- Record clearing services

Service Connection Day Partners



Scan code for access to resources and more information on Pathway Home.



Questions

Thank you.

Kim Barnette
kbarnette@ceo.lacounty.gov



**Chief
Executive
Office.**



County of Los Angeles
**Homeless
Initiative**



Pathway Home
A Los Angeles County-led Partnership
for Encampment Resolution