



**Contra Costa
County**

**Contra Costa County
Office of Emergency Services
Local Hazard Mitigation Plan Update**

**Presentation to the Contra Costa County Board
of Supervisors
November 5, 2024**

Hazard Mitigation Planning Process

FEMA requirements that must be met for an approved plan:

Requirements	A	Planning Process
	B	Hazard Identification and Risk Assessment
	C1	Capabilities Assessment
	C2	Mitigation Strategy
	D1	Plan Maintenance
	D2	Evaluation
	E	Plan Adoption
F	Additional State Requirements	

The 2024 update will include:

- Volume I – Planning Area-wide Elements
- Volume II – 40 Annexes (16 municipalities and 24 special districts)

The 2024 Contra Costa County Base Plan consists of the following:

Volume I: Planning Area-Wide Elements

- Executive Summary
- Introduction
- Planning Process
- Community Profile
- Hazard Identification and Risk Assessment
- Mitigation Strategy
- Plan Maintenance
- Appendices (*Mitigation Actions, Stakeholder and Public Engagement, Plan Adoption*)

Mitigation Plan Goals

Save (or protect) lives and reduce injury

Increase resilience of infrastructure and critical facilities

Avoid (minimize or reduce) damage to property

Encourage the development and implementation of long-term, cost-effective, and environmentally sound mitigation projects

Build and support capacity to enable local government and the public to prepare for, respond to and recover from the impact of natural hazards

Planning Partners

Jurisdictions:

- Brentwood
- Clayton
- Danville
- El Cerrito
- Hercules
- Lafayette
- Martinez
- Moraga
- Oakley
- Orinda
- Pinole
- Pleasant Hill
- Richmond
- San Pablo
- San Ramon
- Walnut Creek

Special Districts

- Bethel Island Municipal Improvement District
- Central Contra Costa Sanitary District
- Contra Costa Water District
- Delta Diablo
- Diablo Water District
- Ironhouse Sanitary District
- Kensington Fire Protection District
- Kensington Police Protection and Community Services District
- Mt. View Sanitary District
- Pleasant Hill Parks and Recreation District
- Reclamation Districts No. 799, 830, 2025, 2026, 2122, 2137
- San Ramon Valley Fire Protection District
- San Ramon Valley Unified School District
- West County Wastewater District
- Rodeo-Hercules Fire Protection District
- Town of Discovery Bay Community Services District

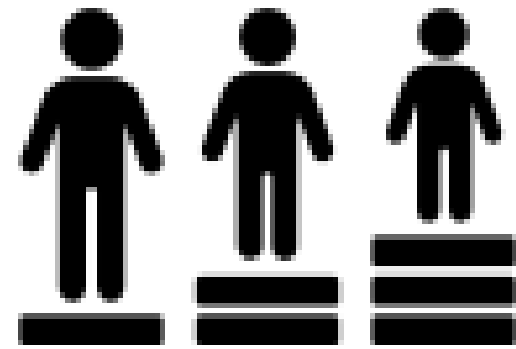
Cities - 16

Special Districts - 24

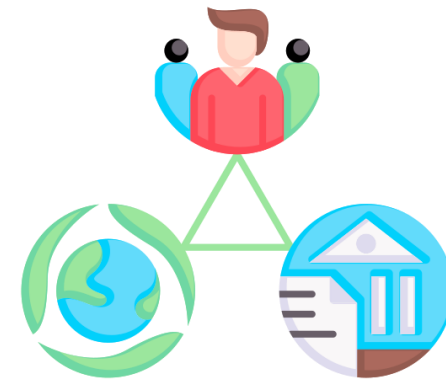
Total Participants - 40



Plan Update and Changes



- Introduced equity considerations into impact considerations and invitations to participate in the planning process
- Ranking includes disproportionate effects of disasters on vulnerable populations



- Each participating jurisdiction addressed its community's risks, capabilities, critical assets, hazard mitigation strategies, and plan participation



- Greater analysis on climate change and its impacts for each natural hazard
- Severe weather and flooding were separated into specialized categories

Hazards Addressed

Natural Hazards *(required by FEMA)*

Climate Change

Dam and Levee Failure

Drought

Earthquake

Flood

Landslide

Sea Level Rise

Severe Weather

(Severe Thunderstorms – Hail, Strong Winds, Tornadoes – Heavy Rainfall, Heat Wave/Extreme Heat)

Tsunami

Wildfire

Human-Caused/Technological Hazards

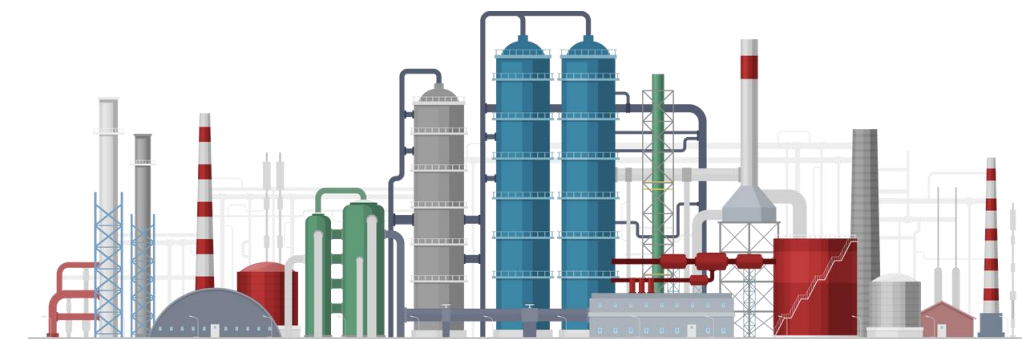
Cybersecurity Threats

Hazardous Materials Incidents

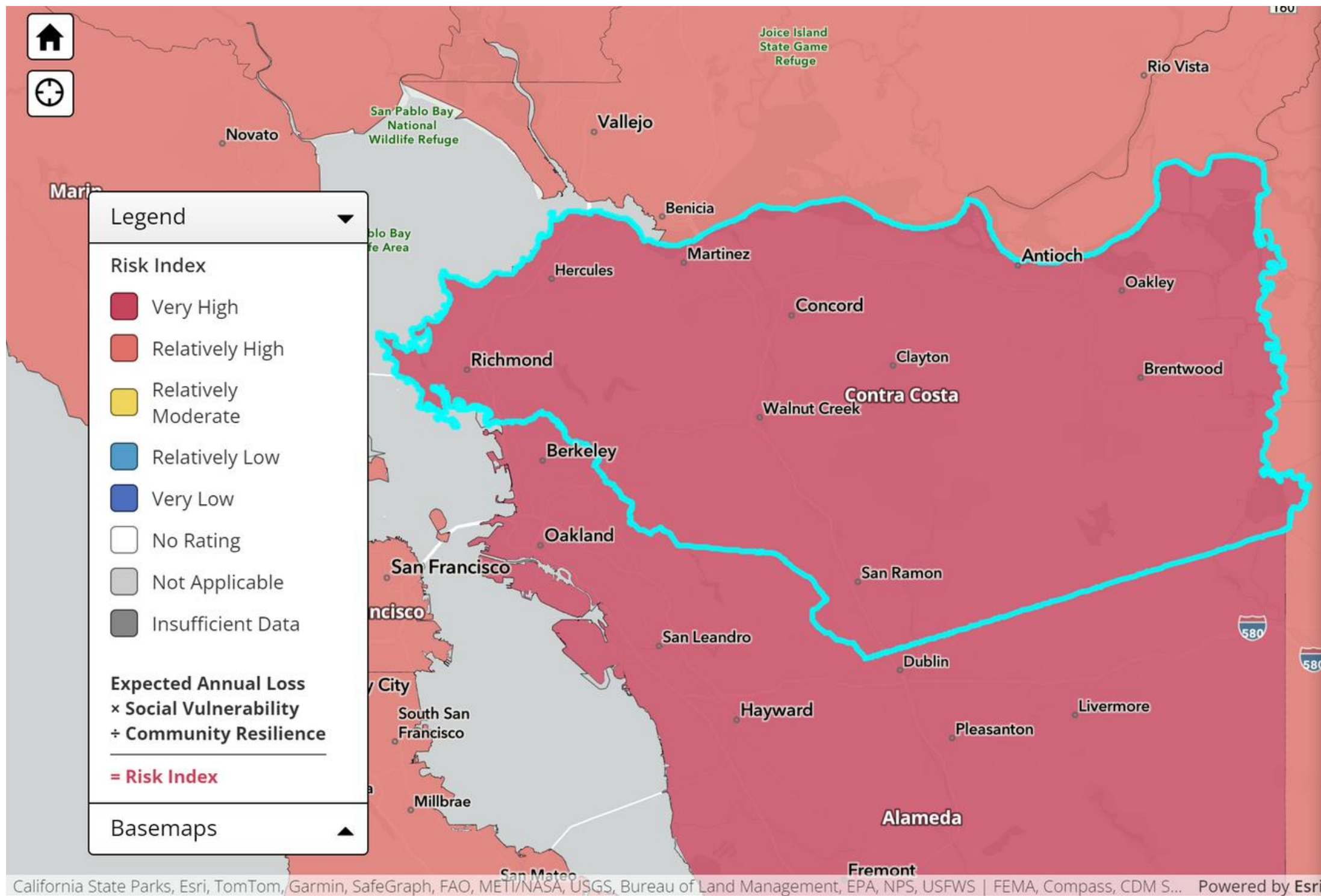
Utility Interruptions

Active Shooter Incidents

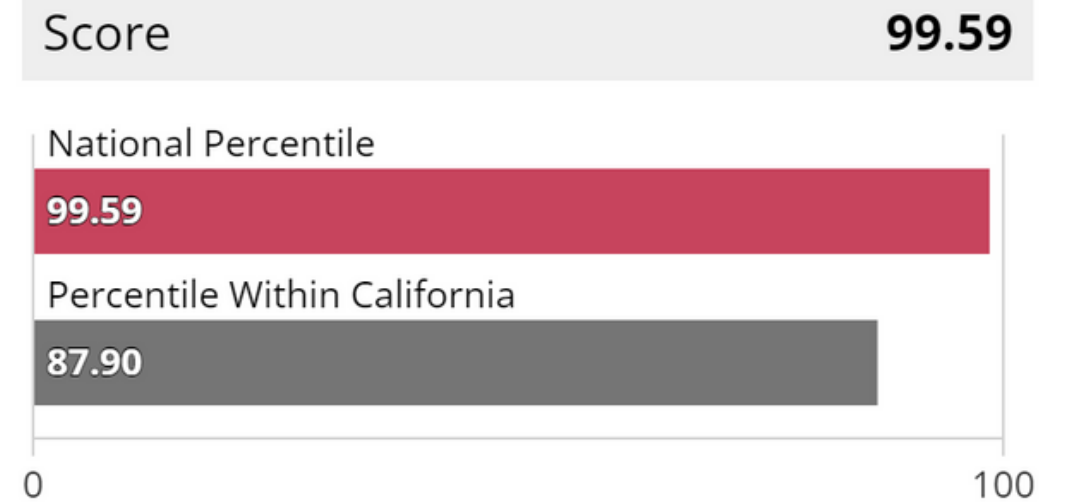
Terrorism (Weapons of Mass Destruction)



FEMA Risk Ranking



Risk Index is
Very High



The Risk Index rating is **Very High** for **Contra Costa County, CA** when compared to the rest of the U.S.

Risk Index Overview

Compared to the rest of the U.S., **Contra Costa County, CA's** Risk Index components are:

Expected Annual Loss	Very High
Social Vulnerability	Relatively Moderate
Community Resilience	Relatively High

FEMA National Risk Index

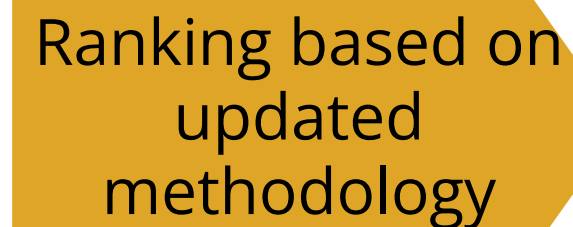
National Ranking	County	Risk Index
1	Los Angeles, CA	100.00
2	Harris County, TX	99.97
3	Riverside, CA	99.94
4	San Bernardino, CA	99.90
5	Alameda, CA	99.87
6	Santa Clara, CA	99.84
7	Miami-Dade, FL	99.81
8	Orange, CA	99.78
9	Broward, FL	99.75
10	Palm Beach, FL	99.71
11	San Diego, CA	99.68
12	King County, WA	99.65
13	Cook County, IL	99.62
14	Contra Costa, CA	99.59

There are 3,007 political County subdivisions in the United States. Contra Costa County ranks as the 14th most at-risk County in the United States per the FEMA National Risk Index. Out of 58 California Counties, Contra Costa County ranks as the 8th most at risk County in California.

Updated LHMP Risk Ranking

2018	
<i>Hazard</i>	<i>Risk Rating</i>
Earthquake	High
Landslide	High
Severe Weather	Medium
Wildfire	Medium
Dam and Levee Failure	Medium
Flood	Medium
Sea Level Rise	Low
Tsunami	Low
Drought	Low

Ranking based on updated methodology



2024	
<i>Hazard</i>	<i>Risk Rating</i>
Earthquake	High
Wildfire	High
Landslide	High
Heavy Rain	High
Flood (Urban/Flash Flood)	Medium
Thunderstorm (Severe Weather)	Medium
High Winds/Damaging Winds (Severe Weather)	Medium
Extreme Heat	Medium
Utility Interruptions	Medium
Drought	Medium

Countywide Mitigation Actions

Status		Mitigation Action Total	
Ongoing		14	
In Progress/In Work		7	
Not Started		0	
Delayed/Deferred		1	
New		25	
TOTAL		47	
Completed		8	
Deleted/No Longer Needed		1	
Mitigation Actions per Natural Hazard			
Climate Change	21	Landslide	19
Dam and Levee Failure	18	Sea Level Rise	23
Drought	18	Severe Weather <i>(Severe Thunderstorms (hail, strong winds, and tornadoes), Heavy Rainfall, Heat Wave)</i>	21
Earthquake	26	Tsunami	20
Flood	35	Wildfire	26

- o At least one mitigation action must be created for each ranked hazard
- o These actions were developed in collaboration with other county departments including the Department of Conservation and Development and the Department of Public Works

Public Comment Period

- Anyone who lives or works in Contra Costa County was invited to provide comments and feedback on the plan.
- Outreach materials were translated into Spanish, Tagalog, and Traditional and Simplified Chinese.



- 80+ In-Person Events Across the County
- Two surveys:
 - Nov. 2023 - Jan. 2024
 - To identify public hazard priorities and preparedness
 - Apr. 2024
 - To provide feedback on the plan
 - Total Response: 1200+
- Digital Strategy
 - County Website
 - Social Media

CalOES and FEMA Review



- Plan submitted for CalOES on July 15, 2024
 - Requested concurrent CalOES/FEMA review
- County Base Plan (Volume I) and Diablo Water District Annex Approved in September 2024
 - BIMID Annex Approved October 2024
- Remaining 39 Volume II Annexes were resubmitted to CalOES and FEMA and currently undergoing review (County plan) and Volume II (40 plan participant annexes) must be approved together
- Once CalOES/FEMA approves the plan:
 - Local adoption process may begin on the remaining annexes

General Plan and LHMP Integration



What is AB 2140?

Passed in 2006, [Assembly Bill No. 2140 \(AB 2140\)](#) allows California counties and cities to be considered for additional state cost-share on eligible Public Assistance projects by adopting their current, FEMA-approved local hazard mitigation plans (LHMPs) into the Safety Element of their General Plan. This adoption, along with other requirements, makes the county or city eligible to be considered for part or all of its local-share costs on eligible Public Assistance projects to be provided by the state through the [California Disaster Assistance Act \(CDAA\)](#). For more information regarding Public Assistance, please visit [Cal OES Public Assistance Division](#).

How Can AB 2140 Help Counties, Cities, and Your Citizens?

For eligible Public Assistance projects, the typical local (non-federal) cost share is 25% of the total project cost. [CDAA](#) can allow the state to pay up to 18.75% of the non-federal share, that would otherwise fall upon the county or city, to pay for eligible Public Assistance projects once the legislature has passed a bill allowing additional state funding after a disaster occurs. Upon approval of the legislature, counties and cities that are AB 2140 compliant are also eligible to be considered for the remaining 6.25% local share to be funded by the state, essentially covering the entire local-share cost for eligible Public Assistance projects. Please note that funding is not guaranteed.

What Do You Need to Know?

- AB 2140 is **not** a requirement; it is an optional state incentive to help counties and cities become more resilient to natural hazards. Be sure to work with your planning department as the process proceeds.
- There are multiple steps that must be completed before Cal OES can issue a letter of AB 2140 compliance. These steps are listed in detail below in the section [What Are the Steps to Become AB 2140 Compliant?](#)
- Be aware that adopting the LHMP via a formal resolution is a federal requirement for FEMA to officially "approve" the LHMP and does not make your jurisdiction automatically AB 2140 compliant. AB 2140 is a state incentive which also requires adopting your LHMP into the Safety Element of your General Plan. However, both adoptions can take place at the same time using the same adoption resolution.
- AB 2140 compliance expires when the LHMP expires. You must re-adopt the LHMP itself **AND** adopt the LHMP into the Safety Element of your General Plan each time you update your LHMP in order to continue compliance.
- For multi-jurisdiction hazard mitigation plans (MJHMPs), the county and each city in the MJHMP must adopt its own specific annex into its own General Plan

- By integrating the LHMP into the Safety Element of the General plan, the county may be eligible for additional state cost-share on eligible projects during State declared disasters
- Compliance:
 - Must be confirmed by CalOES
 - Does not guarantee additional funding
 - Should be requested during the Disaster Proclamation process
 - be re-established with each Hazard Mitigation Plan update (every five years)
- Only Counties and cities are eligible (does not apply to special districts)

Plan Maintenance Requirements

Mitigation Action Tracking

- Provide status of mitigation actions
- Include any new actions



Annual Meetings

- Steering Committee
- Plan Participants



Public Outreach

- Annual Public Meetings
- Ongoing outreach on LHMP efforts



Integration into other Plans

- General Plan
- Others





Thank you!

For questions or comments contact:

OES Staff

oes-staff@so.cccounty.us