

CONTRA COSTA COUNTY COMMUNITY WARNING SYSTEM



**Contra Costa County Office of the Sheriff
Emergency Services Division**



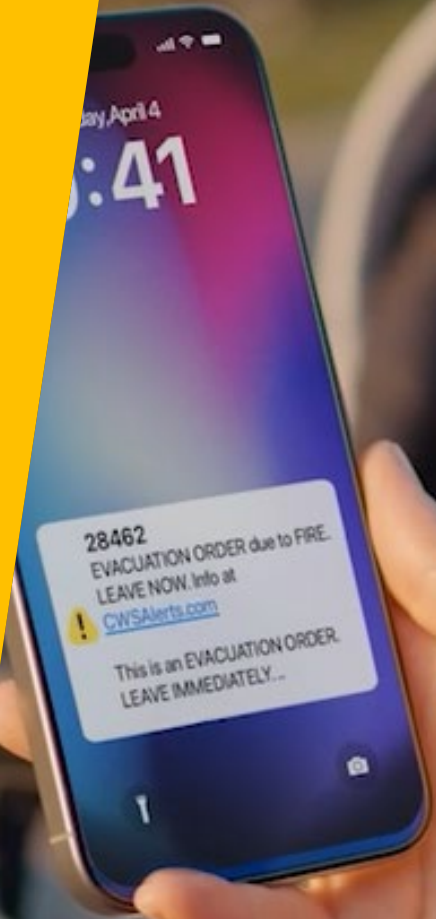
Community Warning System

The Community Warning System (CWS) is Contra Costa County's official emergency alert system. CWS alerts may be issued at the request of County Officials—such as law enforcement, fire agencies, or the County Health Officer—to warn people in affected areas that they are, or may soon be, in danger and should take immediate protective action to protect life or health.

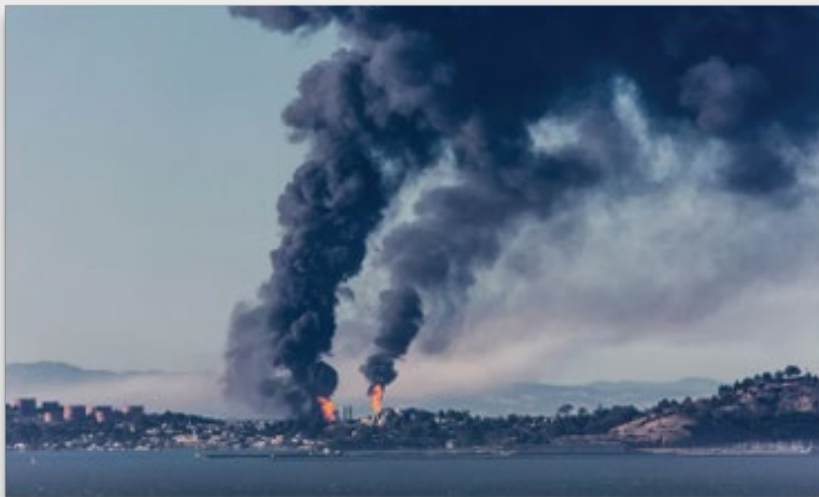
A CWS alert can provide basic information about the emergency and tells people what protective action they need to take.



Community Warning System



Hazard Type	Protective Action Example
Fire Incidents	Evacuation Warning Evacuation Order Avoid the Area
Industrial Facility & Hazmat Incidents	Shelter in Place Avoid the Area Evacuation Warning Evacuation Order
Attempt to Locate at Risk Person	Please Look For...
Law Enforcement Activity	Lock Down/Shelter in Place Avoid the Area
Severe Weather-Related Incidents	Evacuation Warning Evacuation Order Avoid the Area Shelter in Place



Risk Type	Protective Action
Flammable/Explosion	Evacuate
Health concern (non-flammable) HazMat?	Shelter in Place

Community Warning System

Hazardous Material/Gas Leak Protective Actions



Risk Type	Protective Action
Fire	Evacuate
Fire threat later, or potential fire threat	Evacuation Warning


Community Warning System

Fire Protective Actions



Community Warning System

Mass Notification Tools



Contra Costa County - CWS
Registration

Email 1* **Location***

This field is required.
* Required for mobile app users

Password* **How did you hear about the CWS**

This field is required.

Confirm Password* **Preferred Language**

Password rules

Phone 1* ext **Chemical Facility Selection**

Text Message 1

Location is used for precision alerting. Your data will NOT be shared.

Have an account? Sign In
[English \(US\)](#) ©2024 BlackBerry Limited. All Rights Reserved.

BlackBerry Athos Inbox My Profile CCC-CWS Julie Beach- DO NOT DELETE

Home / My Profile

My Profile

Basic Information

Username *

First Name

Last Name

How did you hear about the CWS

Preferred Language

Chemical Facility Selection

Remove me from the system

City or Town or Special District

User ID

Contact Information

Phone 1 * ext

Phone 2 ext

Phone 3 ext

Text Message 1

Text Message 2

Text Message 3

Email 1
* Required for mobile app users

Email 2

Email 3

Physical addresses


Location *

Location 2

Location 3

Community Warning System

CWS Registration- Voice, Text, Email



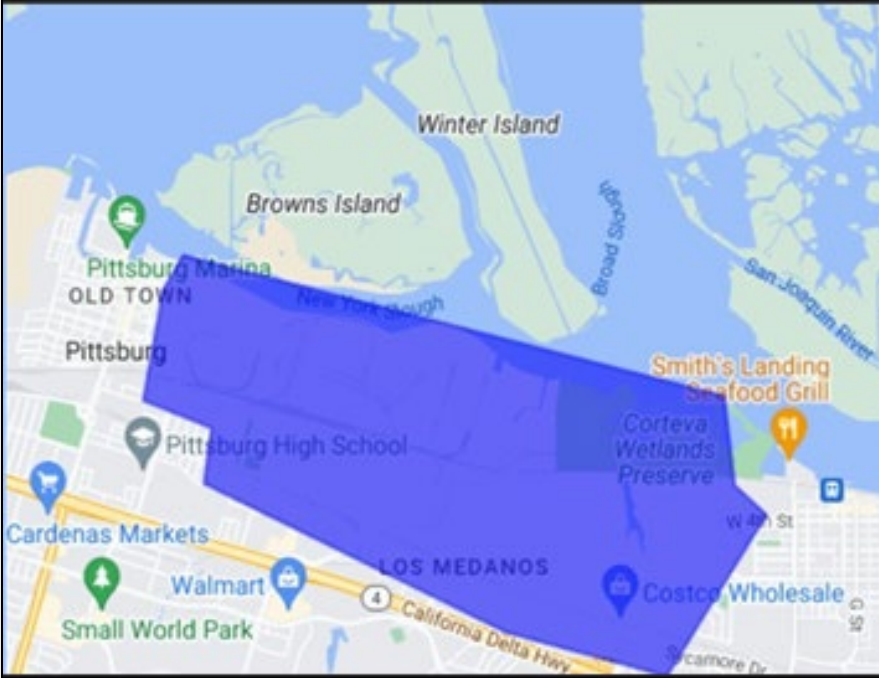
CoCoCWS

Published by CoCoCWS App

September 2 at 11:19 AM

Public Health Advisory for portions of Pittsburg and Antioch. More info at health.org/hazmat.

is a Public Health Advisory Message from Contra Costa Health for portions of Pittsburg and Antioch. An incident at the CORTEVA Chemical Plant in Pittsburg affected individuals with respiratory sensitivities. Most people will not be affected. Nose or throat irritation may be possible for some people in the affected area. If you experience any irritation, advise your doctor. See more



←

Contra Costa CWS

505 posts




Edit profile




CONTRA COSTA COUNTY
OFFICE OF THE SHERIFF

COMMUNITY WARNING
SYSTEM



EXTREME WEATHER INFORMATION

The National Weather Service may issue **Red Flag Warnings** due to extreme weather conditions. To check if any red flag warnings are in effect for your area please go to: <https://www.weather.gov/mtr/>

CURRENT ALERTS

Check this section for CWS Alerts issued. Generally, if no items are displayed CWS has not issued any alerts or tests, or you may need to refresh your browser. If you have any questions, please refer to our [FAQs Page](#) or contact CWS through our [Feedback Page](#).

WHAT TYPE OF ALERTS DOES THE COMMUNITY WARNING SYSTEM SEND?

CWS can alert residents and businesses within Contra Costa County that are

FAQ's

SEARCH THIS WEBSITE

Search ...

TRANSLATE THIS WEBSITE

Select Language

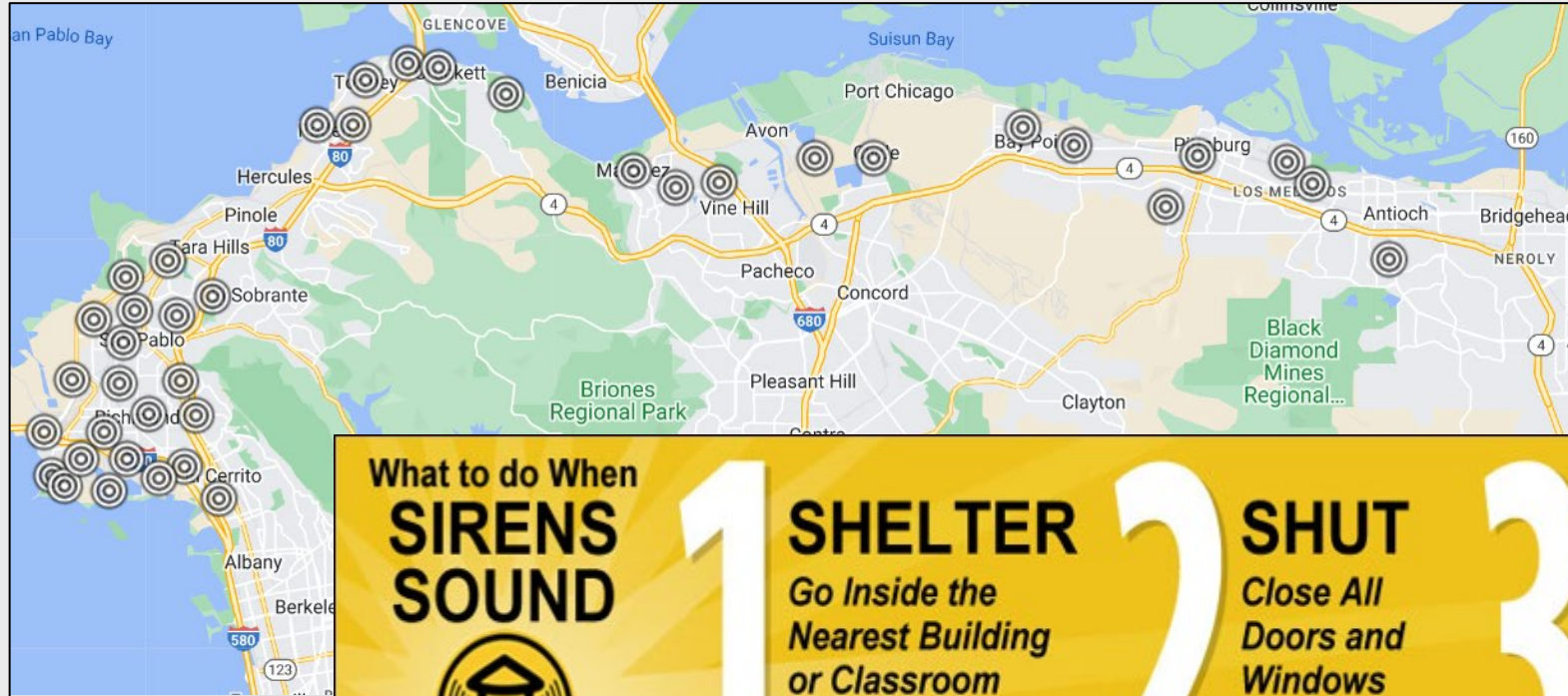
Powered by Google Translate

REGISTRATION



Community Warning System

Sirens



What to do When SIRENS SOUND



1 SHELTER
Go Inside the Nearest Building or Classroom

2 SHUT
Close All Doors and Windows

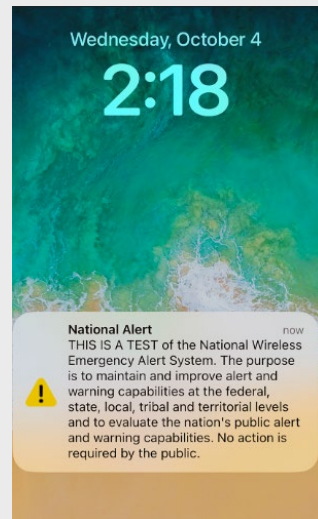
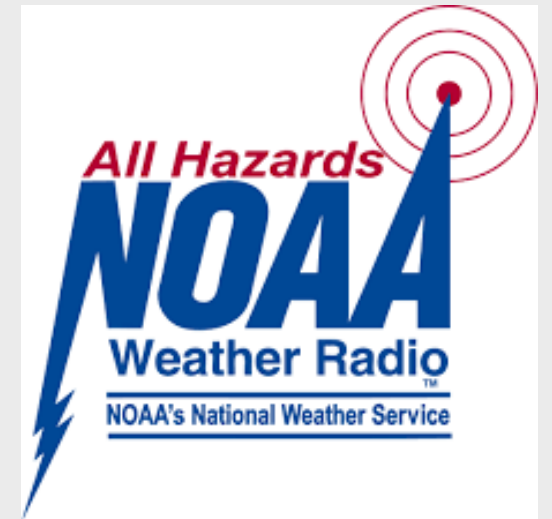
3 LISTEN
Stay Quiet to Hear Important Instructions

Community Warning System

Sirens



WIRELESS EMERGENCY ALERTS



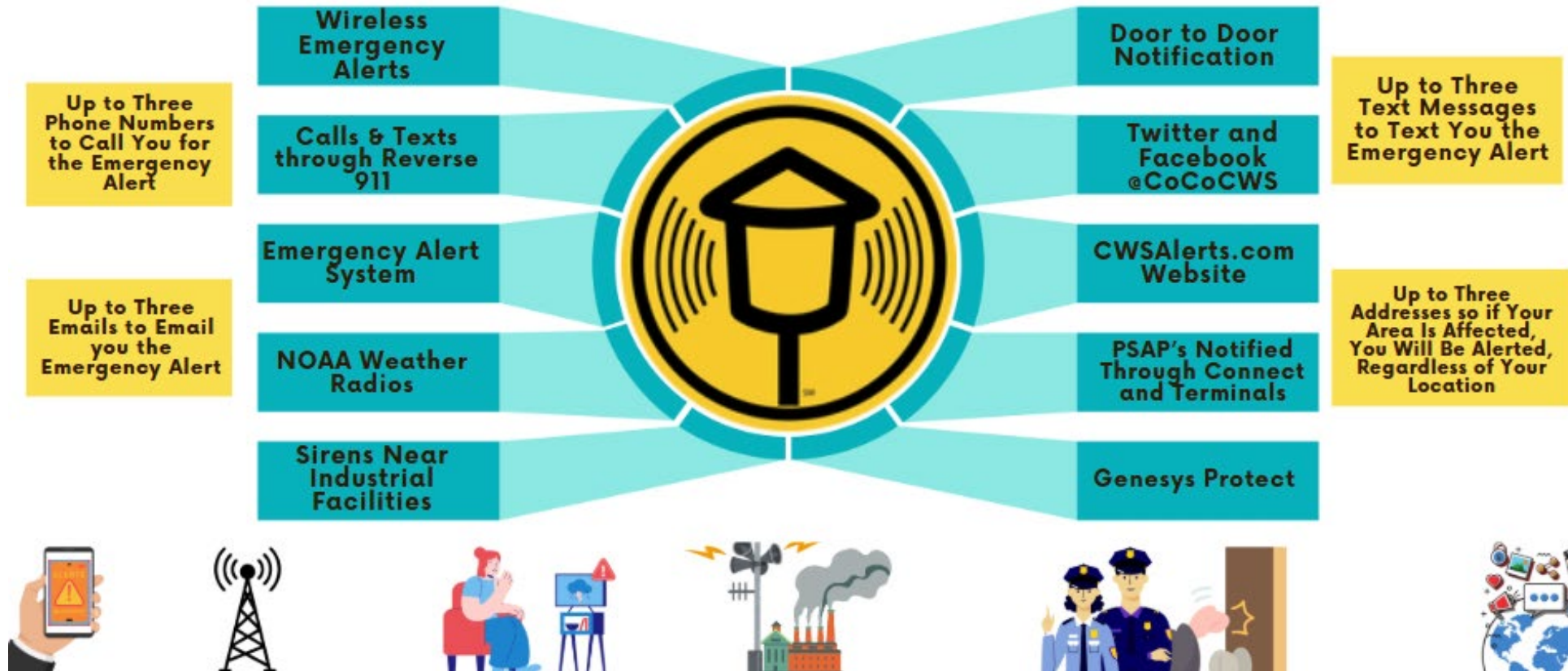
Possible Ways to Reach the Public Without CWS Registration



Possible Ways to Reach the Public Without Federal Tools & Without CWS Registration



Possible Ways to Reach the Public With CWS Registration



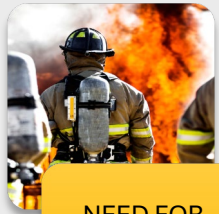
Possible Ways to Reach the Public With CWS Registration Without Federal IPAWS Tools



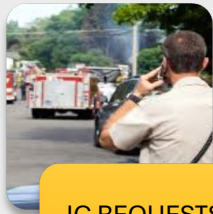
Community Warning System

CWS Activation Process

- 1 IC requests CWS activation from Sheriff's Dispatch
- 2 Dispatch will contact the on-call CWS Duty Officer
- 3 The CWS Duty Officer will call the IC directly



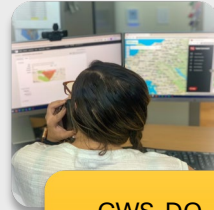
NEED FOR
PROTECTIVE
ACTION
IDENTIFIED



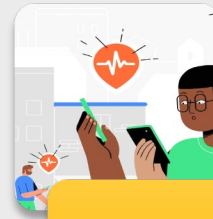
IC REQUESTS
CWS THROUGH
CCCSO
DISPATCH



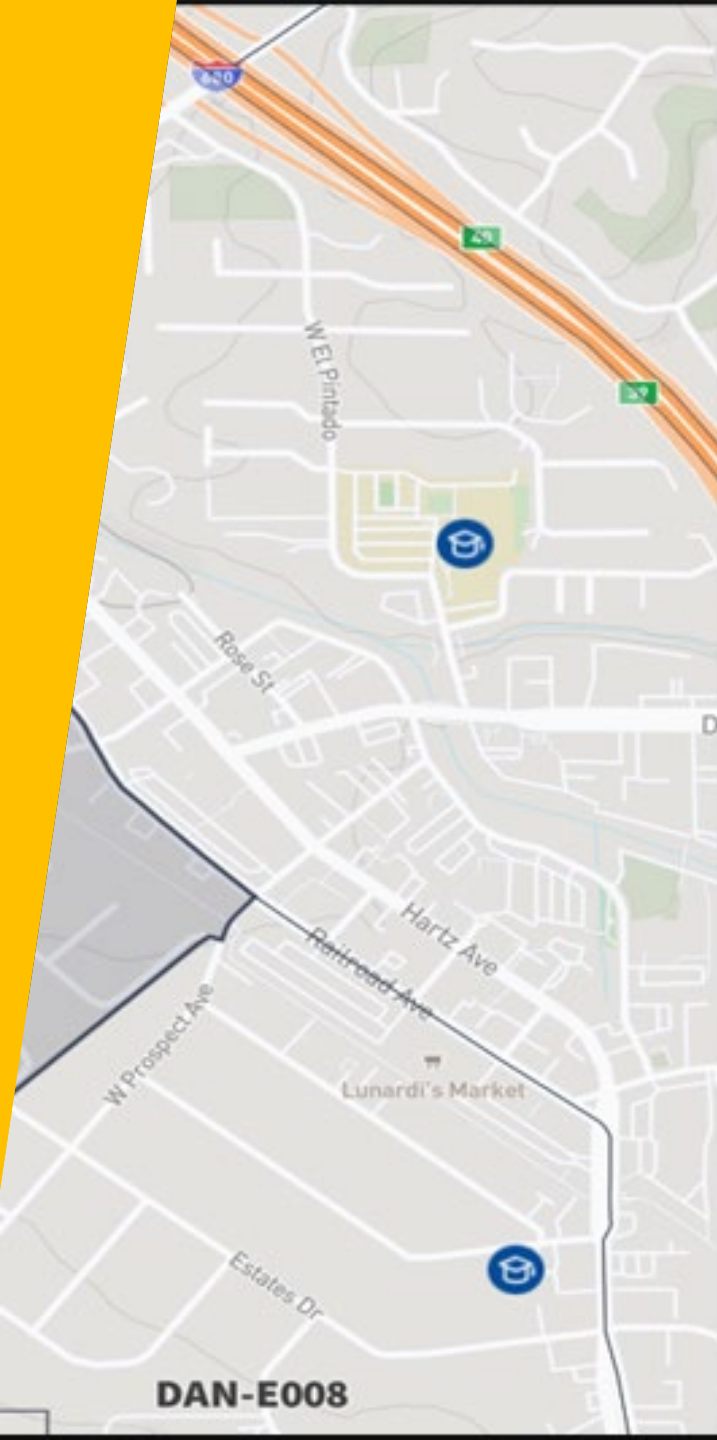
DISPATCH
CONTACTS
CWS DUTY
OFFICER



CWS DO
WORKS WITH IC
TO CONFIRM
CRITICAL
MESSAGE INFO



CWS SENDS
ALERT TO THE
PUBLIC



1 Zone selected

Hide zone

US-CA-XCC-DAN-1
Normal

Summary

 POPULATION

 VEHICLES

 AREA

 STRUCTURES



G

COMMON
Glenwood

ZONE BO

- NOR
- SOU
- EAS
- WIS

Community Warning System

Zonehaven Genesys Utilizes Zones for Evacuations. Zones are used in our county to predefine map areas, and evacuation routes during fires or other large-scale events.

Through the Genesys platform- authorized Law, Fire, OES and other stakeholders can form a common operating picture during large events.

After CWS Sends out the Emergency Alert, the Genesys Platform is manually updated and made viewable by the public.

Are You Registered?

- ▶ For More Information, questions, or to provide feedback on the CWS go to CWSAlerts.com or email us at CWSStaff@so.cccounty.us
- ▶ If you would like to sign-up to receive alerts use your cellular device photo app, scan the QR code, and follow the prompts.

