



Contra Costa County Older Adults and TRANSPORTATION

Transportation throughout Contra Costa County

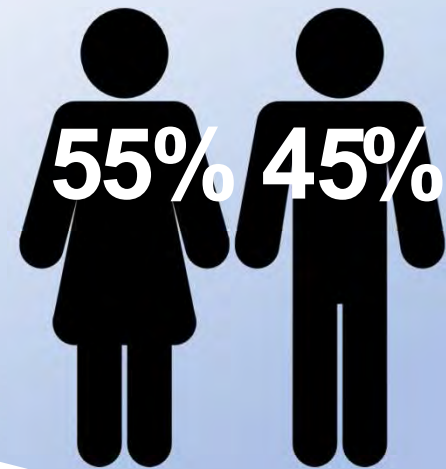
- Prepared by Senior Mobility Action Council, a Work Group of the Advisory Council on Aging

Who are our older adults?

170,000 Contra Costa County residents 65+

15%

- 37% live alone
- 25% have a disability
- 14% speak English “less than very well”
- 69% White, 16.4% Asian, 11.7% Hispanic, 7.7% Black
- 0.7% have no telephone service
- 6.5% live in poverty
- 4.5% receive CalFresh benefits



households without a vehicle

Community-based and non-profit organizations

- Mobility Matters
- Seniors Around Town
- Choice in Aging

Private cars or personal vehicles
Rideshare/Taxi

ADA Public Transit

- County Connection LINK
- East Bay Paratransit
- Rossmoor Paratransit
- Tri Delta Paratransit
- WestCAT Paratransit

How do our older adults get around?

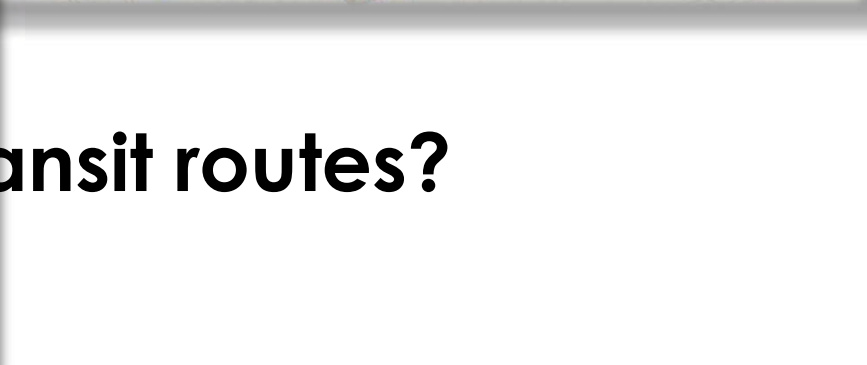
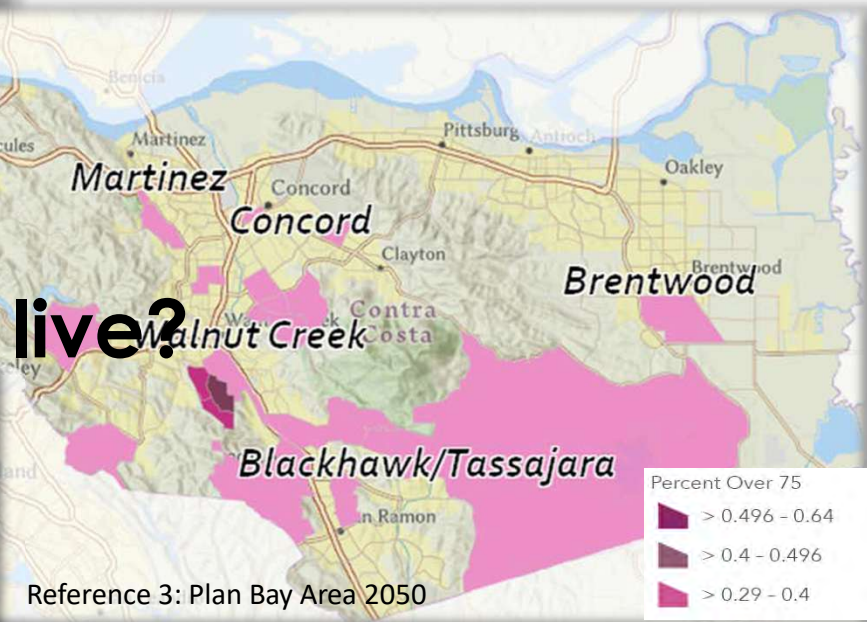
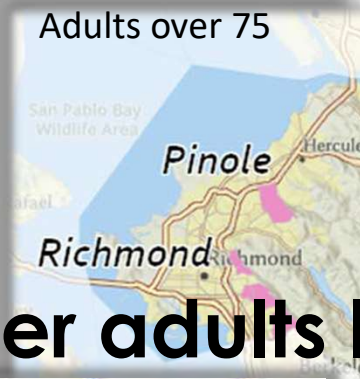


Public Transit

- Amtrak
- BART
- County Connection
- Tri Delta
- WestCAT
- AC Transit

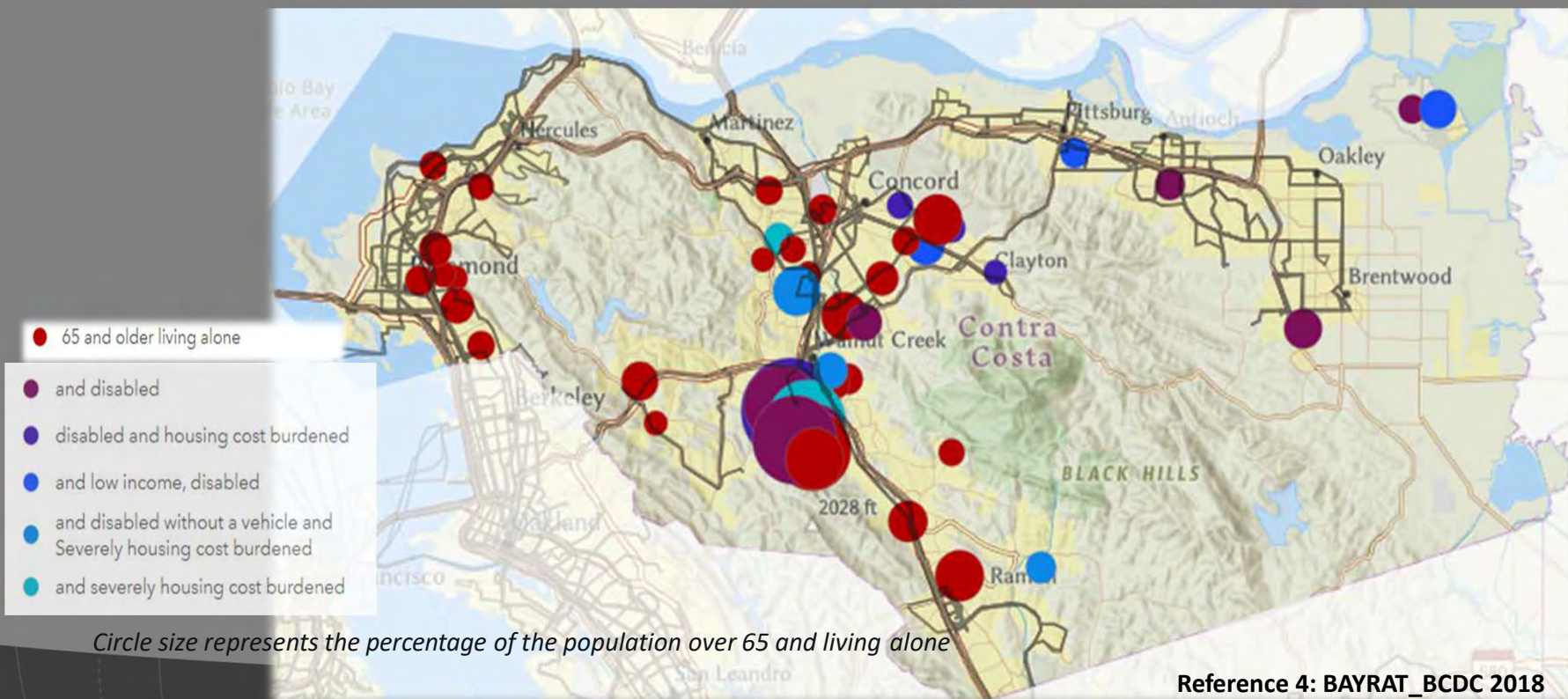
City-based options

- R-transit (Richmond, Kensington, El Sobrante)
- Get-Around Taxi (Concord)
- Lamorinda Spirit (Lafayette, Moraga, Orinda)
- Pleasant Hill Senior Van Service (Pleasant Hill)
- San Pablo Senior Transportation (San Pablo)
- El Cerrito Easy Ride
- Senior Express Van (San Ramon)
- Walnut Creek Senior's Club Mini-Bus (WalnutCreek)
- Rossmoor Bus

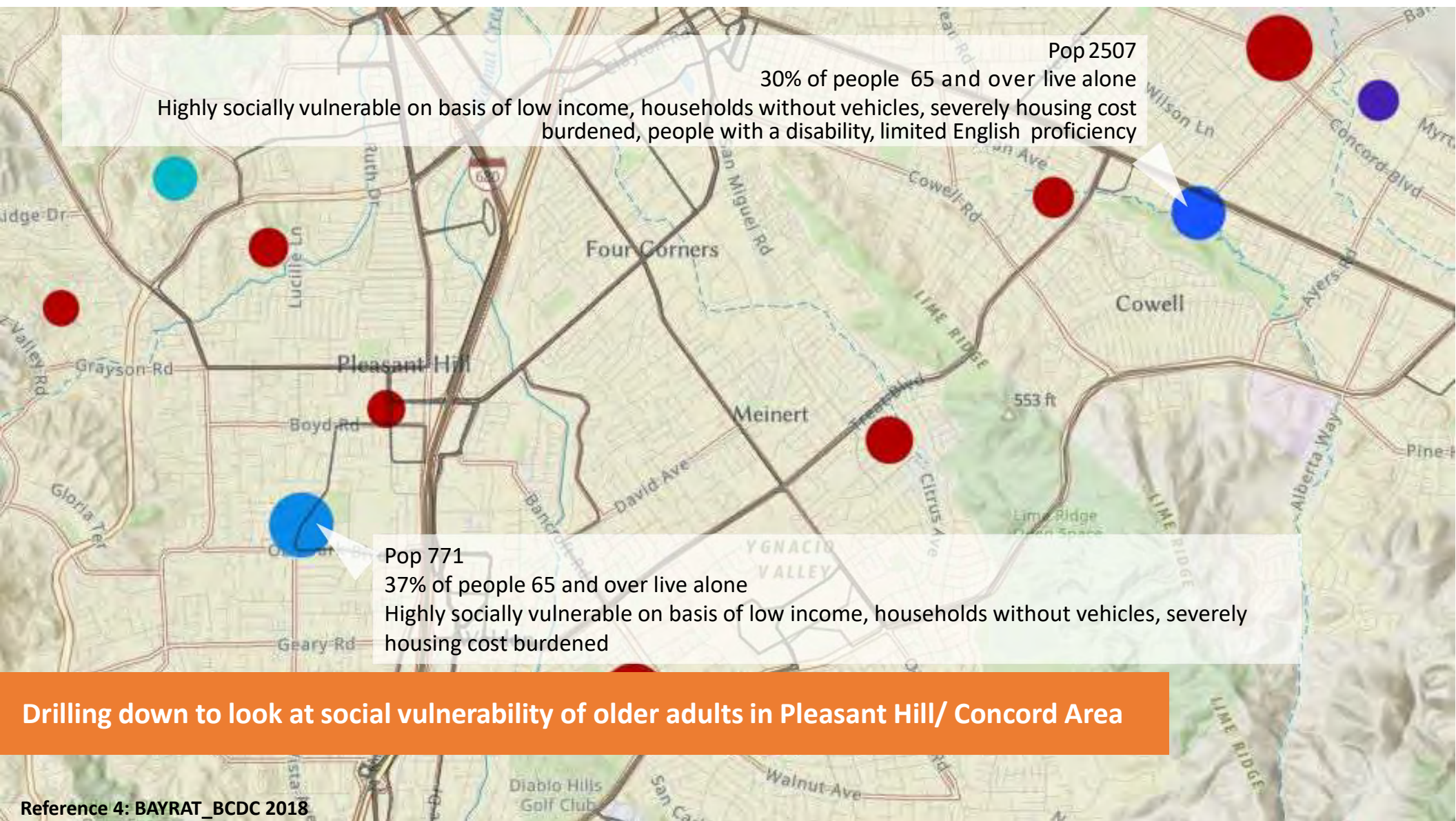


Where do our older adults live?

Where are transit routes?



Size of the circle indicates percentage of population living alone over 65 years old, and color indicates how socially vulnerable they are based on things like income, housing costs, disabilities, owning a vehicle, speaking English. So, big circles that are purple and green are communities with socially vulnerable older adults.



Pop 2507
30% of people 65 and over live alone
Highly socially vulnerable on basis of low income, households without vehicles, severely housing cost burdened, people with a disability, limited English proficiency

Pop 771
37% of people 65 and over live alone
Highly socially vulnerable on basis of low income, households without vehicles, severely housing cost burdened

Drilling down to look at social vulnerability of older adults in Pleasant Hill/ Concord Area

Reference 4: BAYRAT_BCDC 2018

Notes

- A map is, by definition, an abstraction of reality. Infographics are wonderful for summarizing and generalizing data, but we need to be careful about the conclusions we draw from them:

There is no single way to represent County older adults and what types of access they have to transportation because there is so much variability geographically in the older adult population. Some are distant from transit options, seniors in Diablo or Blackhawk for example, but not as socially vulnerable as older adults who may live alone, are below the poverty line, have an additional physical disability or don't speak English. The map showing where older adults are located is a bit misleading, for this reason.

- Not all forms of transit are equally accessible:

Mass transit layer does not include special trips, which are more likely to be paratransit. Regularly scheduled service may not be accessible for most of our seniors, so proximity to a bus-line does not necessarily mean people have access.

- In conclusion, we have some data showing widely available transit, but it almost certainly conceals pockets of older adults and individuals who cannot access transportation.

This type of infographic is useful for broad explanations, not for strategic planning to actually identify and reach stranded individuals.

References

- Public Regularly Scheduled Mass Transit Blue Ribbon Transit Recovery Task Force, ABAG and MTC 2020
- Source: U.S. Census Bureau, 2019 American Community Survey 1-Year Estimates
(https://data.census.gov/cedsci/map?tid=ACSDP1Y2019.DP02&vintage=2019&layer=VT_2019_050_00_PY_D1&cid=DP02_0009E&mode=customize)
- Population over 75 by census tract: Communities of Concern layer, 2020, Communities of Concern for Plan Bay Area 2050, developed from American Community Survey 2014-18
- Social vulnerability index from SF Bay Conservation and Development Commission's Adapting to Rising Tides BAYRAT_BCDC 2018

Explanation of index: *Certain socioeconomic characteristics may reduce ability to prepare for, respond to, or recover from a hazard event. Census block groups with high concentrations (relative to the 9 county Bay Area) of these characteristics are flagged as socially vulnerable, with each block group assigned a rank of highest, high, moderate, and low. Data is from American Community Survey 2016 5-year estimates.*