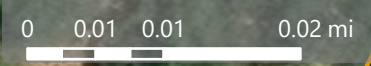


Aerial Photo



Map Legend

- Assessment
- Parcels



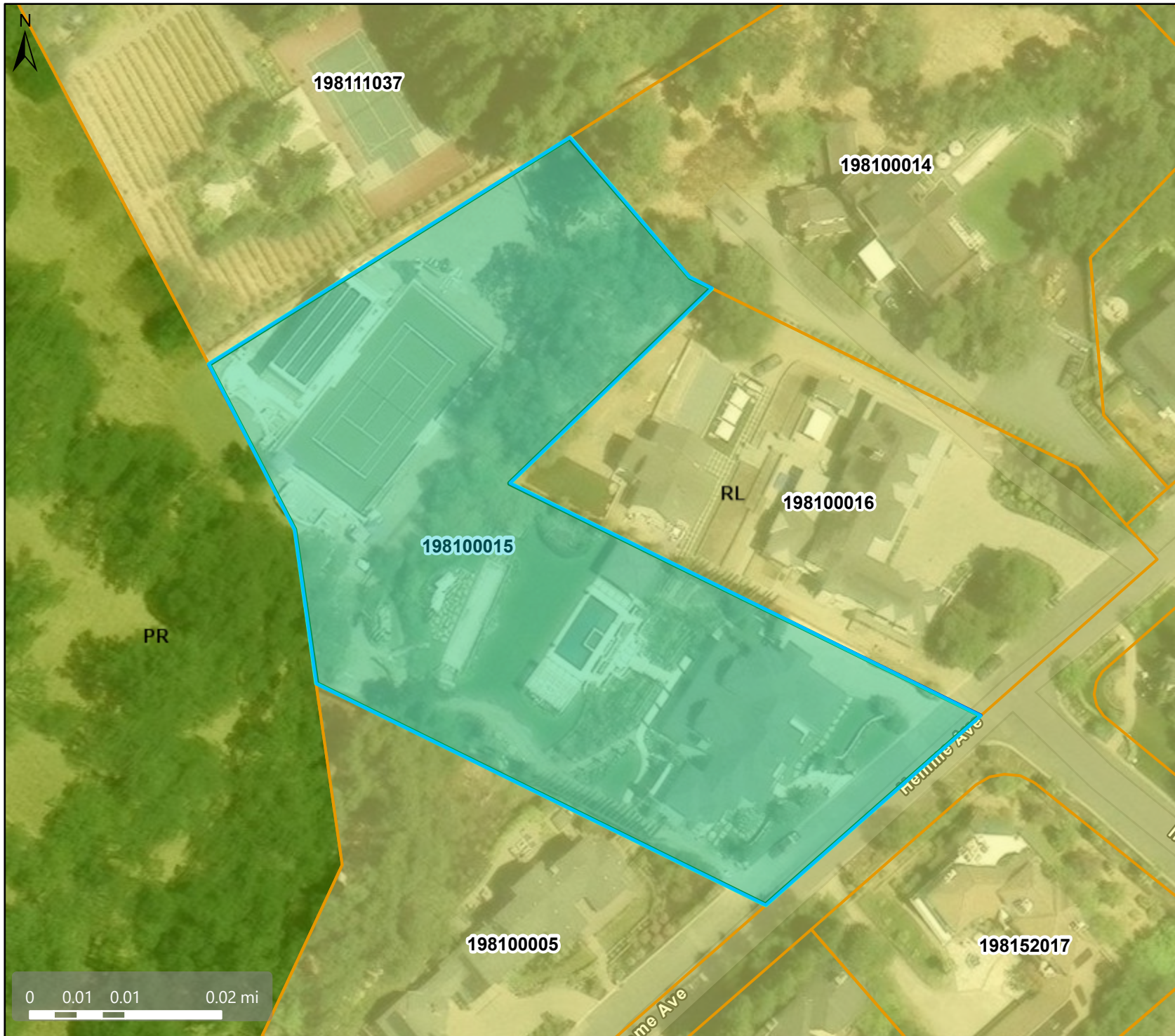
This map is a user generated, static output from an internet mapping application and is intended for reference use only. Data layers that appear on this map may or may not be accurate, current, or otherwise reliable.

THIS MAP IS NOT TO BE USED FOR NAVIGATION.


CCMap is maintained by Contra Costa County Department of Information Technology, County GIS. Data layers contained within the CCMap application are provided by various Contra Costa County Departments. Please direct all data inquiries to the appropriate department.

Spatial Reference
PCS: WGS 1984 Web Mercator Auxiliary Sphere
Datum: WGS 1984

General Plan - RL Residential Low Density

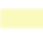



Map Legend

 Assessment
Parcels

Planning

General Plan

 RL (Residential
Low Density)
(1-3 du/na)

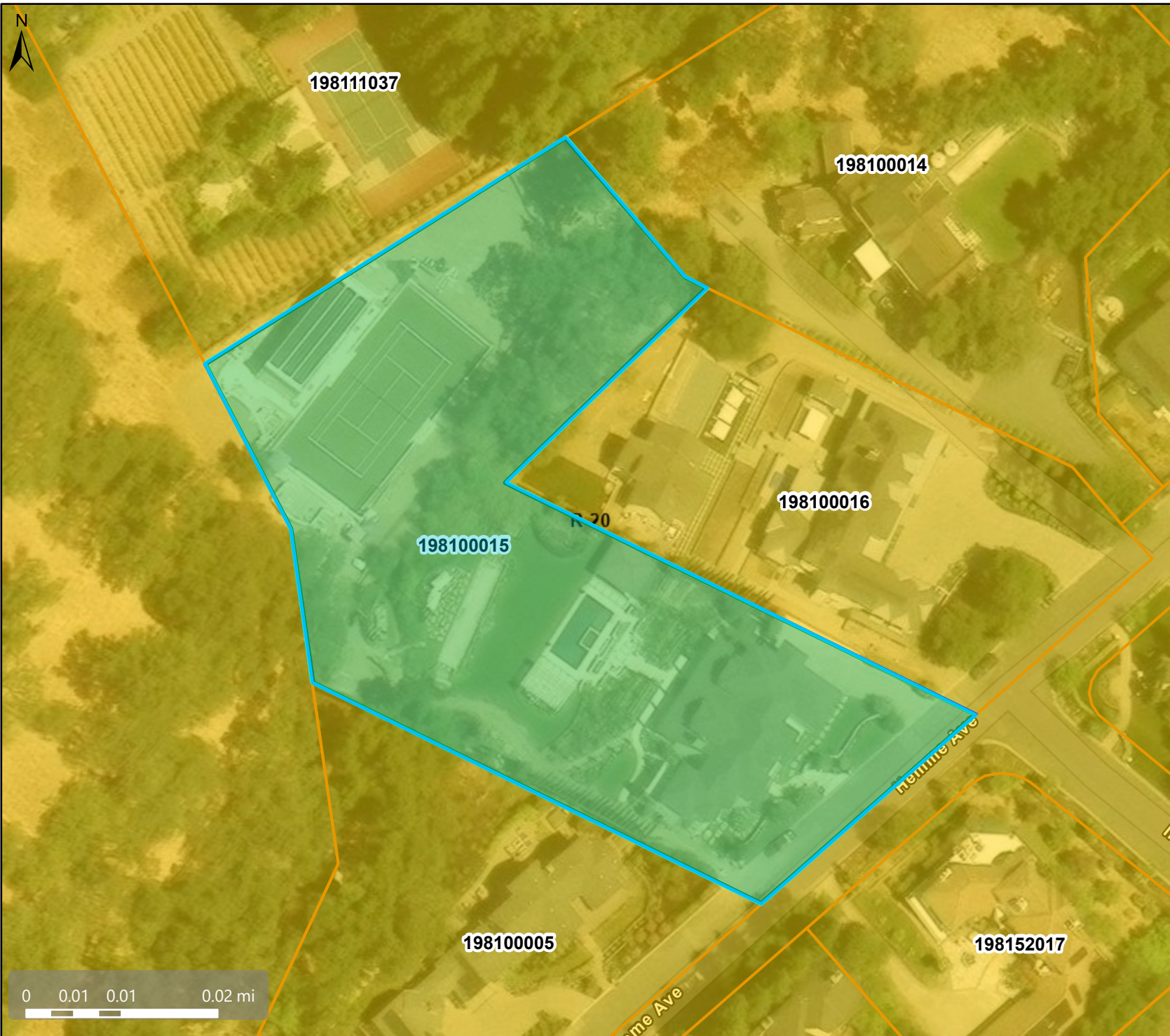
 PR (Park and
Recreation)

This map is a user generated, static output from an internet mapping application and is intended for reference use only. Data layers that appear on this map may or may not be accurate, current, or otherwise reliable.

THIS MAP IS NOT TO BE USED FOR NAVIGATION.
CCMap is maintained by Contra Costa County Department of Information Technology, County GIS. Data layers contained within the CCMap application are provided by various Contra Costa County Departments. Please direct all data inquiries to the appropriate department.

Spatial Reference
PCS: WGS 1984 Web Mercator Auxiliary Sphere
Datum: WGS 1984

Zoning - R-20 Single-Family Residential



Map Legend

Assessment
Parcels

Planning

Zoning

ZONE_OVER

R-20 (Single
Family
Residential)

This map is a user generated, static output from an internet mapping application and is intended for reference use only. Data layers that appear on this map may or may not be accurate, current, or otherwise reliable.
THIS MAP IS NOT TO BE USED FOR NAVIGATION.
CCMap is maintained by Contra Costa County Department of Information Technology, County GIS. Data layers contained within the CCMap application are provided by various Contra Costa County Departments. Please direct all data inquiries to the appropriate department.

Spatial Reference
PCS: WGS 1984 Web Mercator Auxiliary Sphere
Datum: WGS 1984