

# Great California Delta Trail Master Plan



January 20, 2022

Prepared by TrailPeople for:



Delta Protection Commission



Figure 2-10: Map of Major Planned and Existing Regional Trails in and Around the Delta.

### 3D. Western Region

The Western Region is the gateway between the Delta and the Bay Area, where the San Francisco Bay Trail, Bay Area Ridge Trail, Juan Bautista de Anza National Historic Trail, and SF Bay Area Water Trail overlap with the Delta Trail along the Carquinez Strait Scenic Loop Trail. This Western Region includes the Carquinez Strait<sup>1</sup> and Suisun Marsh, both of which are included in the National Heritage Area (NHA) but are outside of the legal Delta (shown on **Figure 2-1, in Chapter 2**). At the boundary with the Southern Region, the Western Region includes Contra Costa County north of Highway 4.

**Counties:** *Contra Costa and Solano*

**Legacy Communities:** *Bethel Island and Knightsen*

**Western Region Communities:** *Antioch, Bay Point, Benicia, Bethel Island, Brentwood, Crockett, Discovery Bay, Knightsen Martinez, Pittsburg, Port Costa, Oakley, Suisan City, Vallejo*

**Existing Delta Trail Segments (miles/operating agency):**

- *Carquinez Strait Scenic Loop Trail (24.3/EBRPD, Caltrans, City of Vallejo, City of Benicia, California State Parks)*
- *Big Break Regional Shoreline (3.1/EBRPD)*
- *Marsh Creek Regional Trail (4.2/EBRPD)*

**Total Existing Trail: 31.6 miles**

**Planned/Proposed Delta Trail Segments (miles/planning agency):**

- *Carquinez Strait Scenic Loop Trail (1.2/City of Vallejo)*
- *Delta Access Trail (7.4/EBRPD)*
- *Great California Delta Trail/Contra Costa Shoreline Route (23.1/EBRPD)*

**Total Planned or Proposed Trail: 31.7 miles**

<sup>1</sup> The Carquinez Strait is an eight-mile-long narrow tidal strait that connects Suisun Bay and the tidal estuary of the Sacramento and San Joaquin rivers on the east with the San Pablo Bay, the northern extension of the San Francisco Bay, on the west.

## Western Region Trail Recommendations

### 1. Support trail planning efforts along the Carquinez Strait Scenic Loop Trail.

In 2017, the Commission designated the Carquinez Strait Scenic Loop Trail (CSSLT) as a Delta Trail segment (Resolution 17-01). The CSSLT is currently a popular bike loop (approximately 24 miles, including gaps and incomplete segments) across both the Carquinez and Benicia-Martinez Bridges and through four historic downtowns (Benicia, Martinez, Port Costa, and Crockett). The trail is accessible by Amtrak in Martinez and passes by numerous restaurants, parks, and open spaces. It provides excellent birdwatching opportunities of migrating waterfowl. The long-term vision is for a continuous hiking, biking, and equestrian trail that hugs the shoreline (the inner loop) and an outer loop along the ridgelines in Contra Costa County that provide opportunities to explore the shoreline and ridgelines overlooking the Strait in Contra Costa and Solano Counties. This loop is the eastern limits of the San Francisco Bay Trail and Bay Area Ridge Trail and is a starting point for the Delta Trail.

---

*Recommendation: Continue to support CSSLT planning efforts. As new segments are completed and gaps are closed, those segments should be signed with the Delta Trail logo and added to Delta Trail maps.*

---

### 2. Support EBRPD Delta Trail Alignments in Contra Costa County.

The East Bay Regional Park District (EBRPD) has established a planned Delta Trail alignment along the shoreline of Contra Costa County connecting Martinez to Big Break in Oakley. This alignment is shown in their 2013 Master Plan and is included in the Commission's Resolution 17-01. EBRPD is actively working with Contra Costa County and the Cities of Pittsburg, Antioch, and Oakley to design and build segments of this alignment. Additionally, EBRPD has numerous Delta access trails planned throughout eastern Contra Costa County. These include a loop trail around Jersey Island, a planned route to Discovery Bay, among others shown on the map.

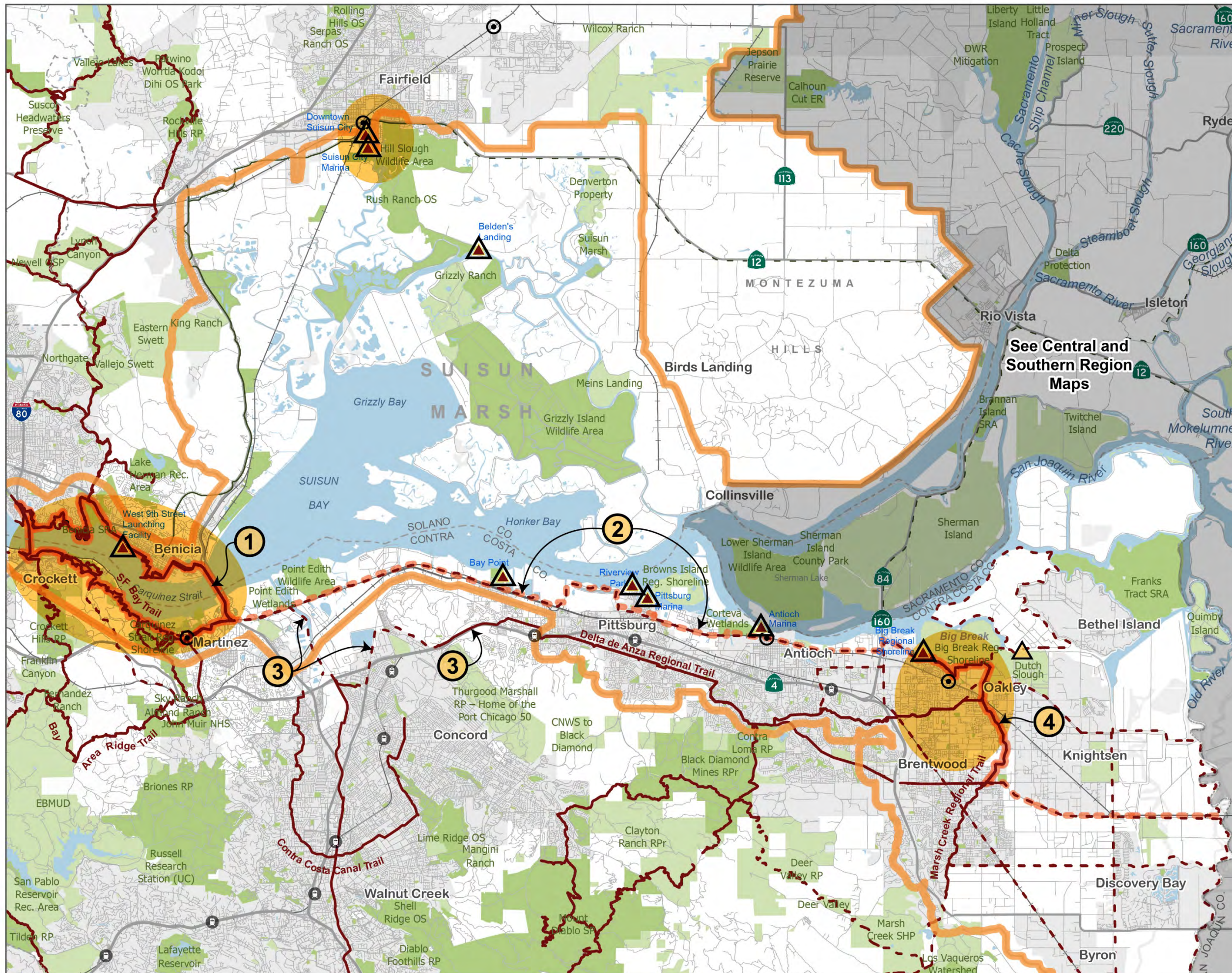
---

*Recommendation: The Commission should continue to support EBRPD's work on this alignment. As new segments are completed and gaps are closed, those segments should be added to Delta Trail maps and Delta Trail logos should be added to trail signs.*

---



Photo of a hiker on the Carquinez Strait Scenic Loop Trail in the Carquinez Regional Shoreline



# Figure 3-4: Western Delta Region Map

## LEGEND

- SF Bay Area Water Trail Sites
- BART Stations
- Amtrak Stations
- Planning Area
- Protected Lands with Public Access
- Protected Lands with Restricted Access
- Water
- Highways/Major Roads
- Railway/BART Line
- County Boundary

## Trails and Bike Facilities

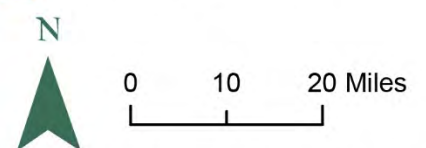
Note: Planned/unbuilt routes shown are conceptual and not open to the public. The sources of all routes shown here are from locally adopted planning documents included in Appendix B. These routes are subject to change and should be confirmed with the appropriate local agency.

- Delta Trail Segments (Existing)
- Delta Trail (Proposed/Unbuilt)
- Regional/Class I Trails (Existing)
- Regional/Class I Trails (Proposed/Unbuilt)
- Regional Bikeways (Existing)
- Regional Bikeways (Proposed/Unbuilt)

See Central and Southern Region Maps

## DELTA TRAIL RECOMMENDATIONS

- Carquinez Strait Scenic Loop Trail
  - EBRPD Delta Trail Alignment
  - Delta de Anza Regional Trail
  - Marsh Creek and Big Break Trails
- Potential Water Launch Sites
  - Potential Adventure Hub



This map has been prepared for general information purposes only. The map is based upon best available information. The background map was created using ESRI information.

## Great California Delta Trail Master Plan



DELTA PROTECTION COMMISSION  
delta.ca.gov