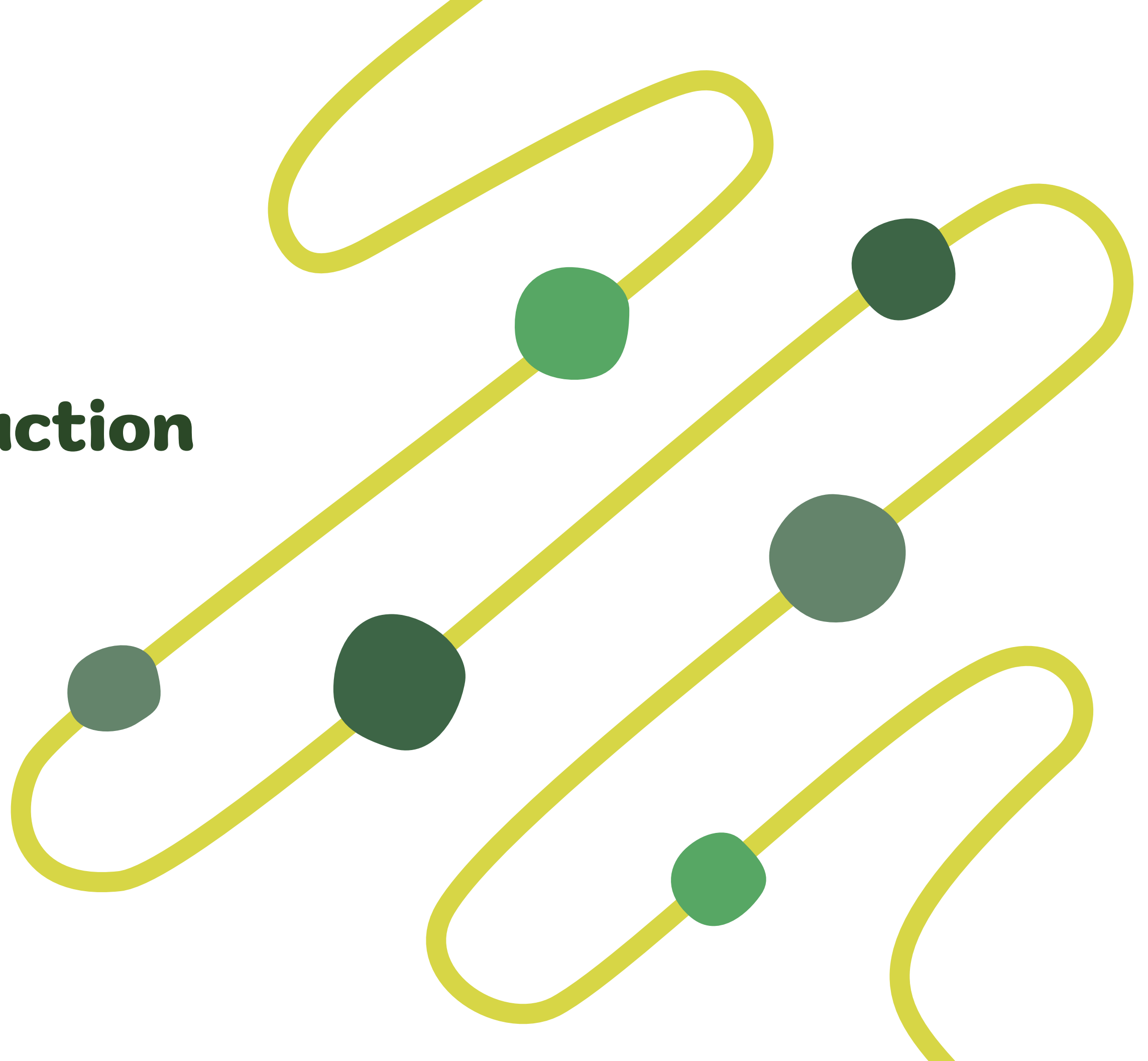




Livorna Park

ALAMO, CA • JUL 2025

Project introduction



Your team



Direct Sales Representative

Lorne Smith
Market Development Lead
Email: lorsmi@kompan.com



Architectural Designer

Surya Subramaniam, CPSI
Bachelor of Architecture
Email: sursub@kompan.com



Play Institute Manager

Dr. Suzanne Quinn
PhD, Child & Family Studies
Email: suzqui@kompan.com



^ Existing Hap McGee & Oak Hill playgrounds

Design considerations

- Establish an independent identity compared to Oak Hill and Hap McGee, yet still work with them to create a cohesive set of parks
- Focus on nature theme with clean lines that can blend in with natural setting
- Consider the community's farming history as inspiration
- Use natural colors such as greens, browns, and tans
- Utilize HDPE/Steel materials instead of robinia
- Create a fenced 2-5 area
- Promote accessibility
- Provide the opportunity for speed & thrill

Equipment requests

- Universal Carousel
- North-facing PE slides
- Climbing nets
- Turf mound for free play and cardboard sledding
- Swings with basic seats, toddler seats, and ADA seat
- Freenotes music elements



Project goals

Modern nature- and garden-inspired equipment create a playground that blends into the natural setting while tying into the Oak Hill and Hap McGee playgrounds.

Higher play events for younger children offer challenging and creative play opportunities for all abilities; quiet spaces are provided for children who like a break from active play spaces.

The full spectrum of play events ranked in the public engagement digital survey are represented, from interactive play to strengthening equipment.

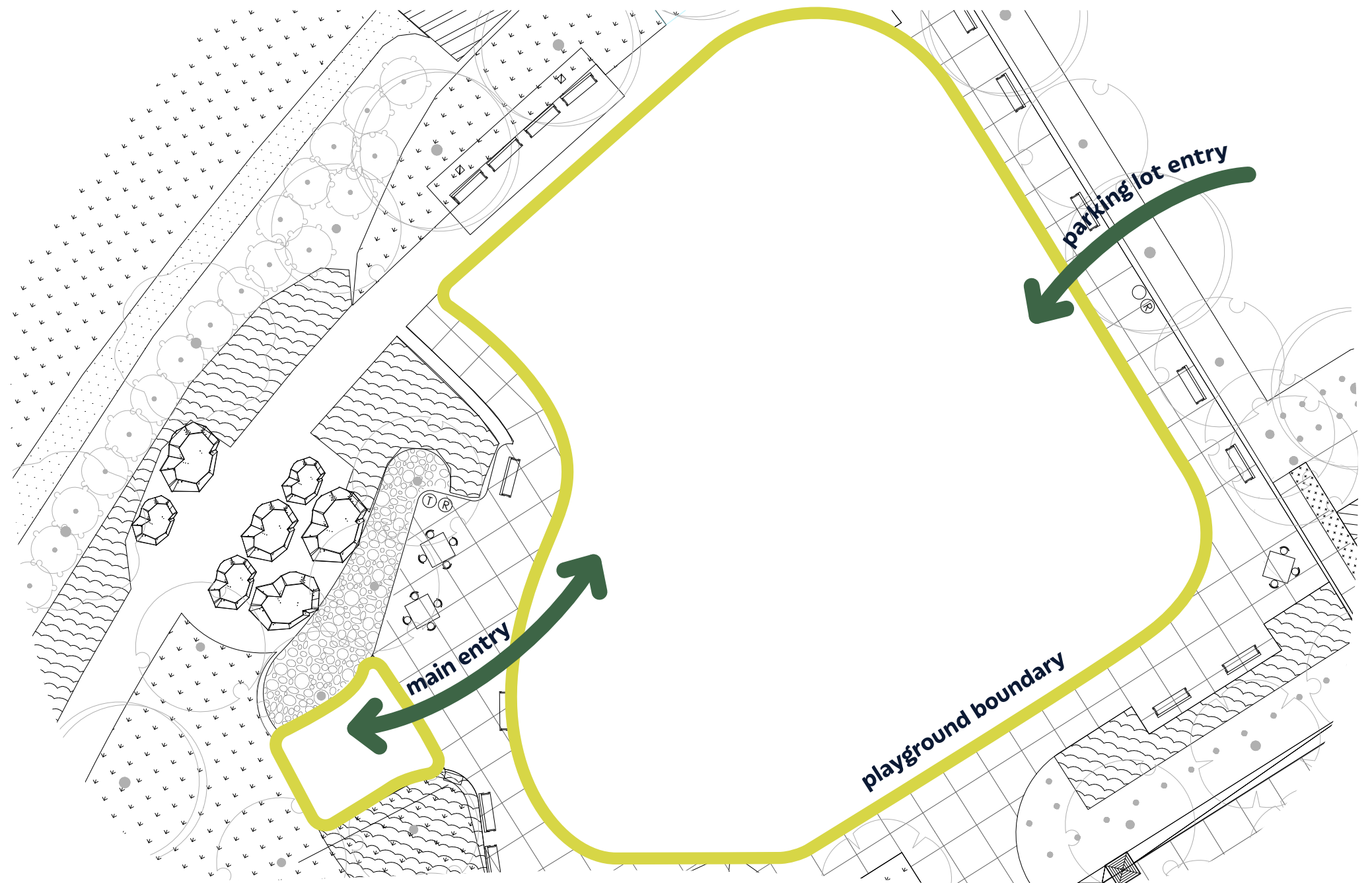
Site context

Maintain clear sight-lines from both the lawn and the parking lot.

Zone the playground with consideration for proposed pathways and site furnishings to assist parents in monitoring children while seated.

Proximity to the proposed restroom allows longer play & stay times for parents and children.

Livorna Rd & Miranda Ave
Alamo, CA



**Design
solution**







Site plan





Age groups



KOMPAN®



Materials



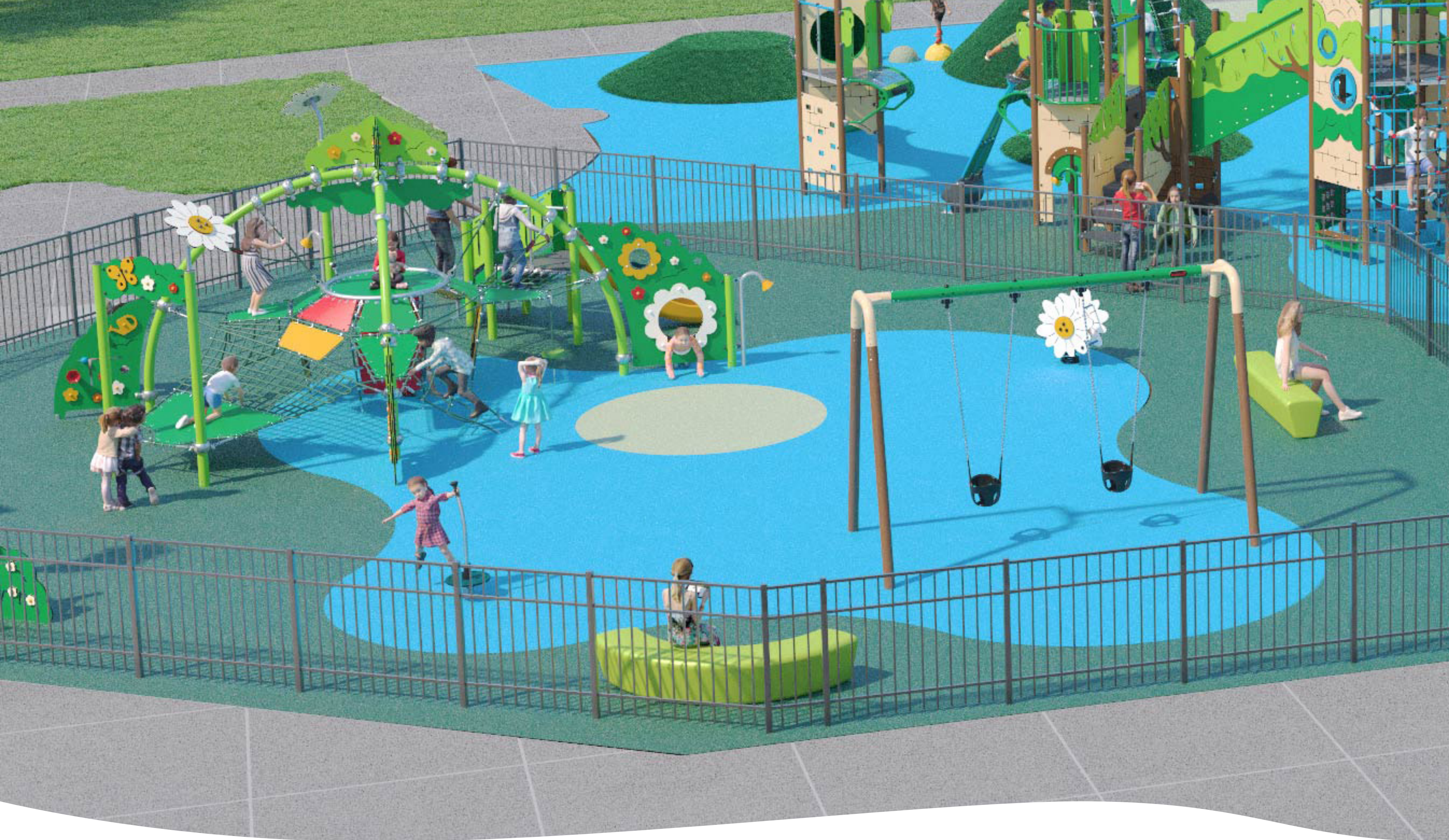
KOMPAN®



Play types



KOMPAN®



2-5 year play

KOMPAN®











5-12 year play

KOMPAN®









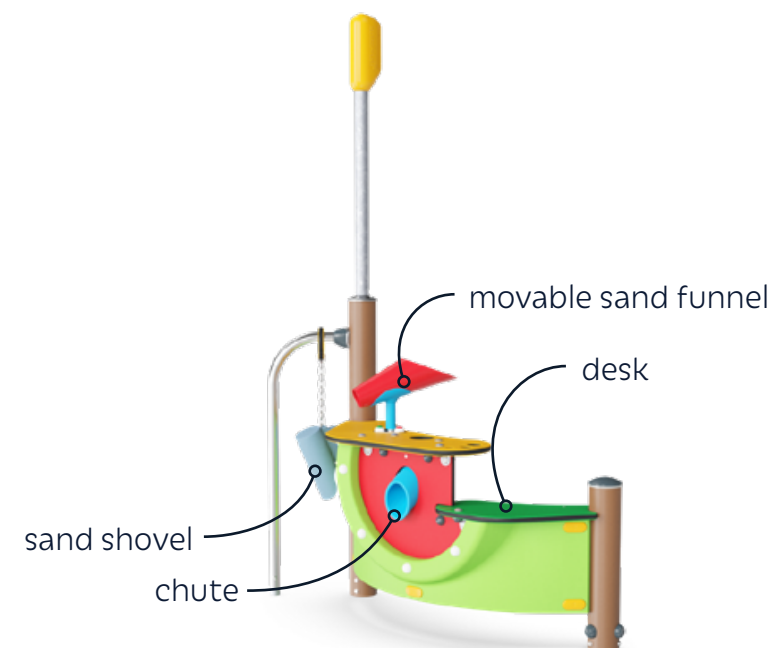
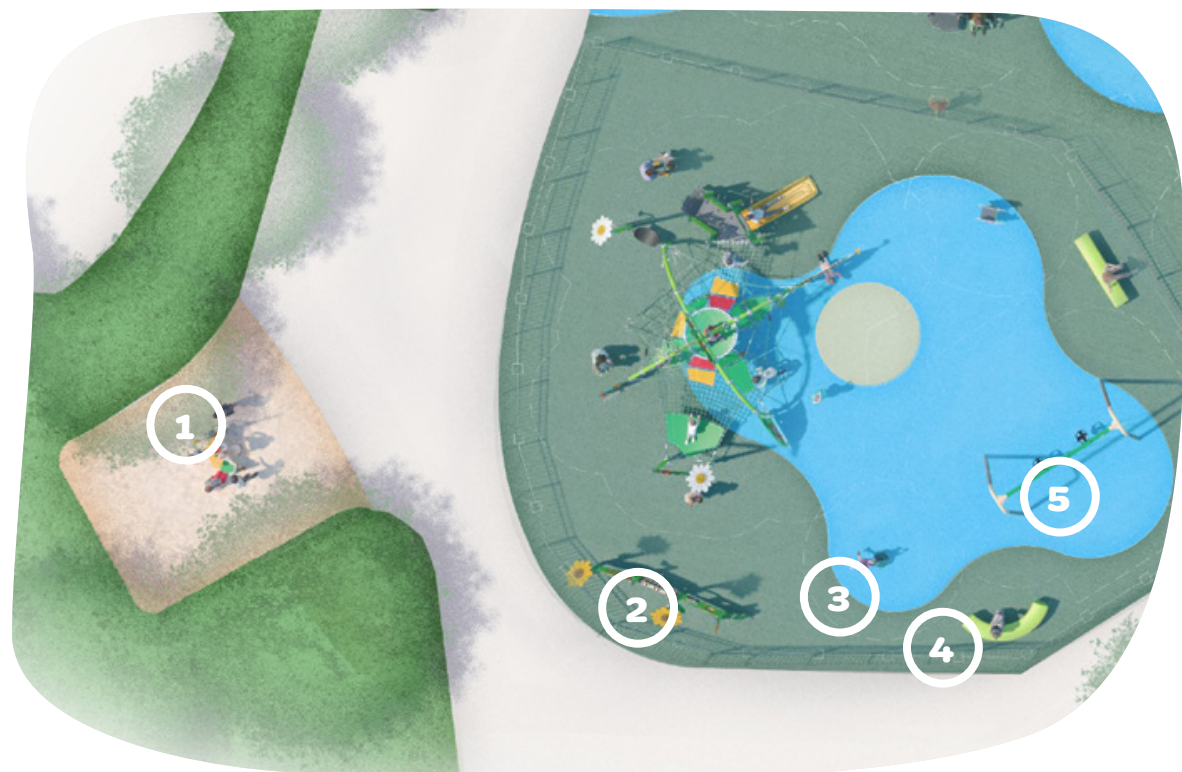




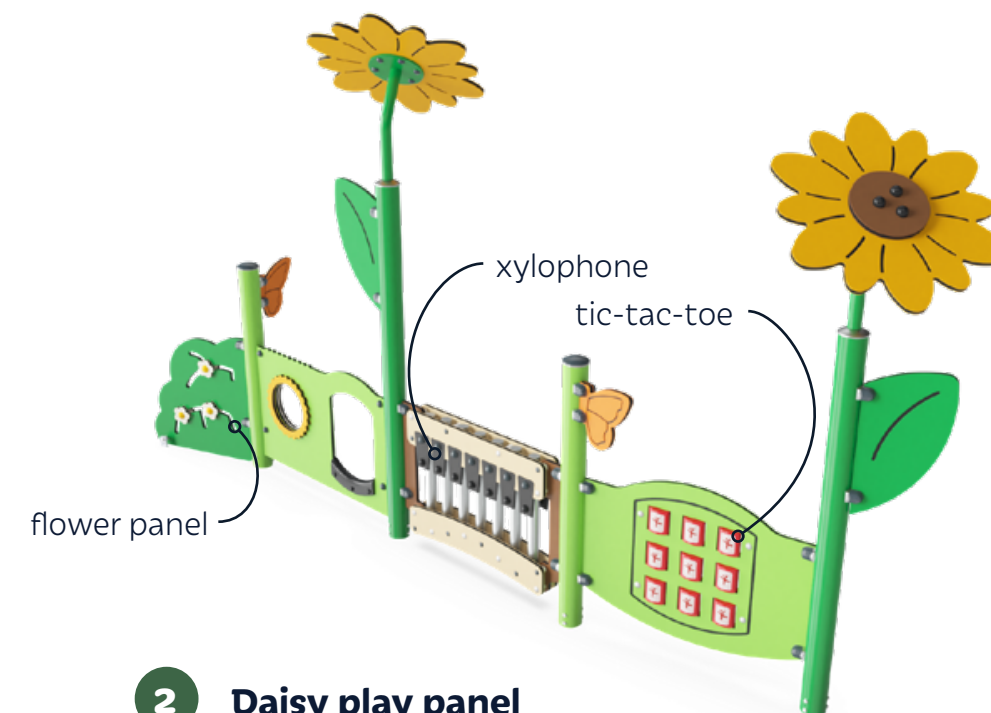


**Equipment
details**





1 Miner sand play



2 Daisy play panel



3 Junior spica spinner



4 Loop arc



5 1-bay swings

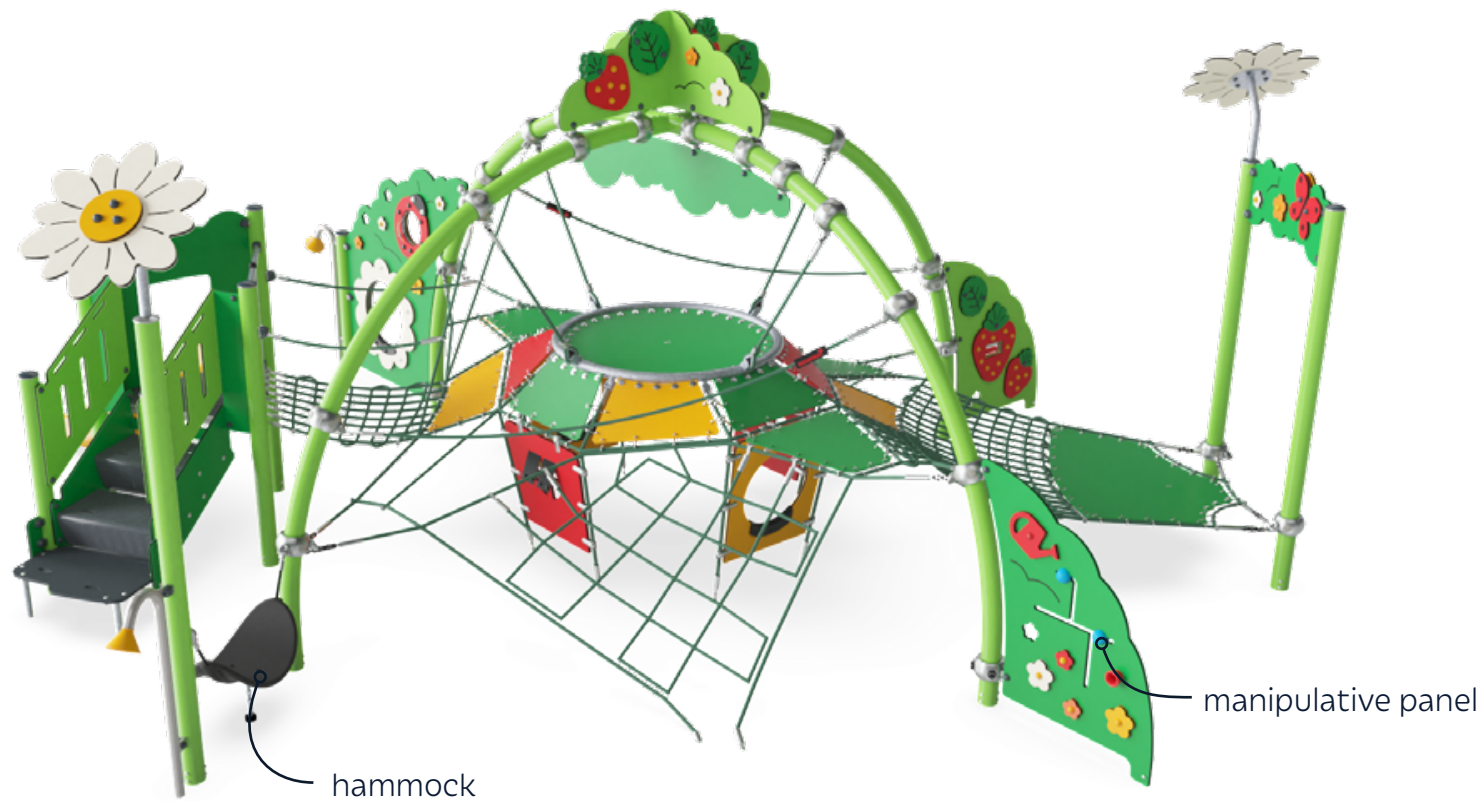
2-5 Equipment



6 Loop line



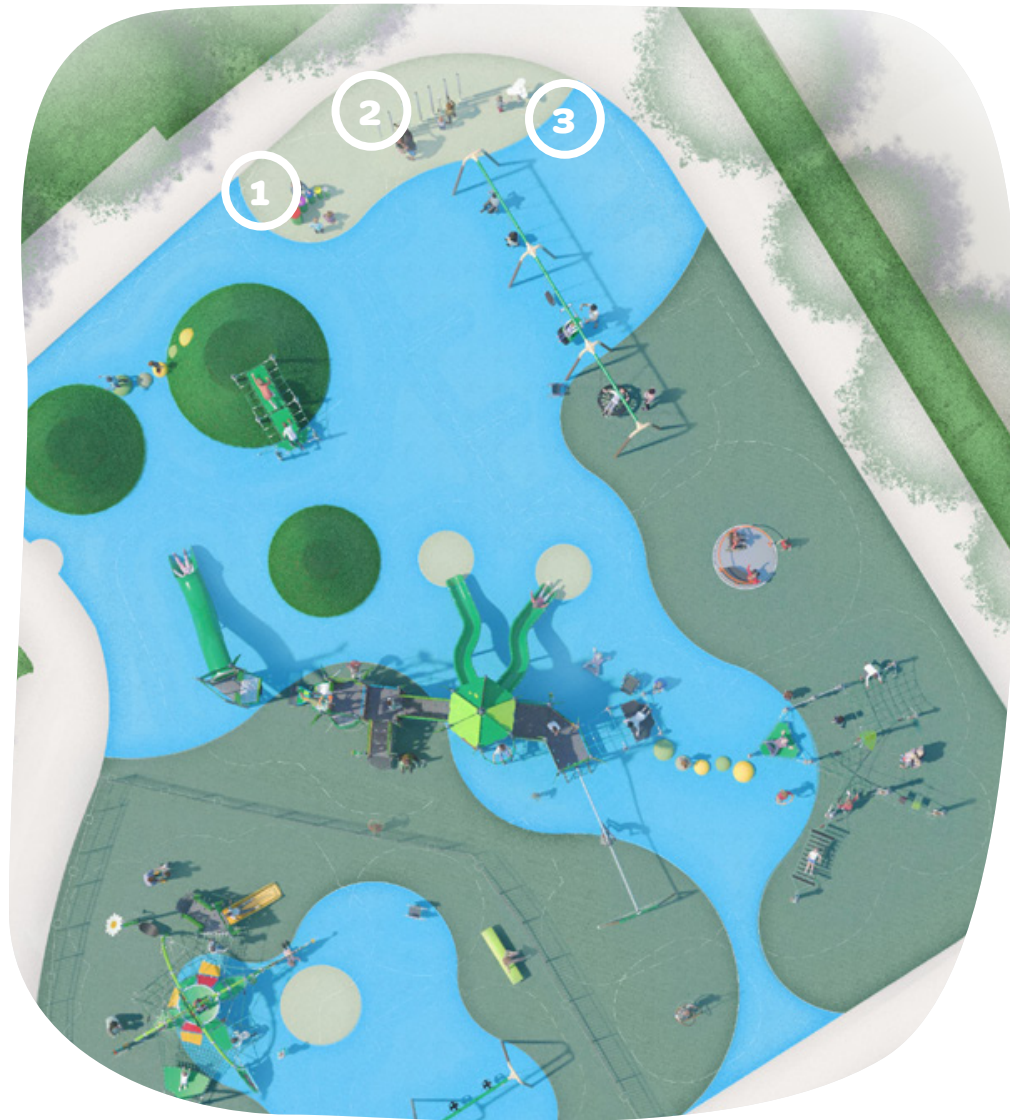
7 Daisy rocker



8 Garden mini dome



2-5 Equipment



1 Freenotes tuned drums



2 Freenotes contrabass chimes

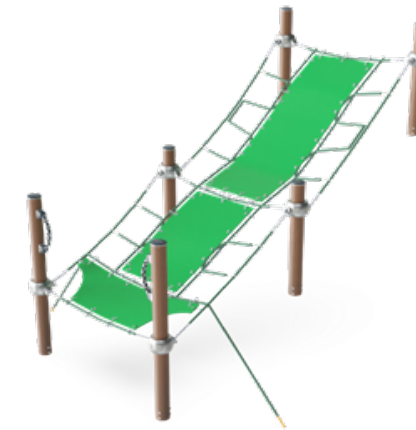


3 Freenotes lilypad

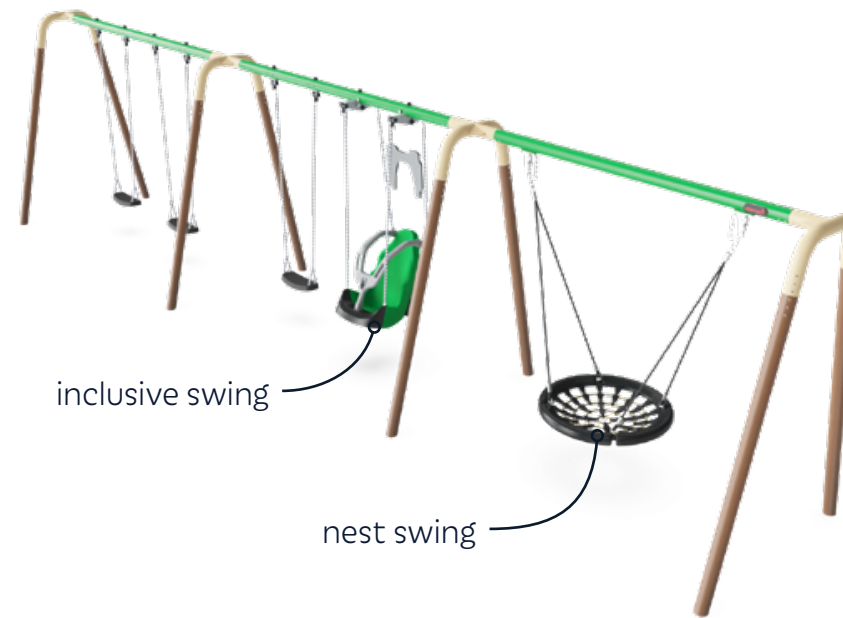
5-12 Equipment



4 PIP spheres



5 Climbing membrane net



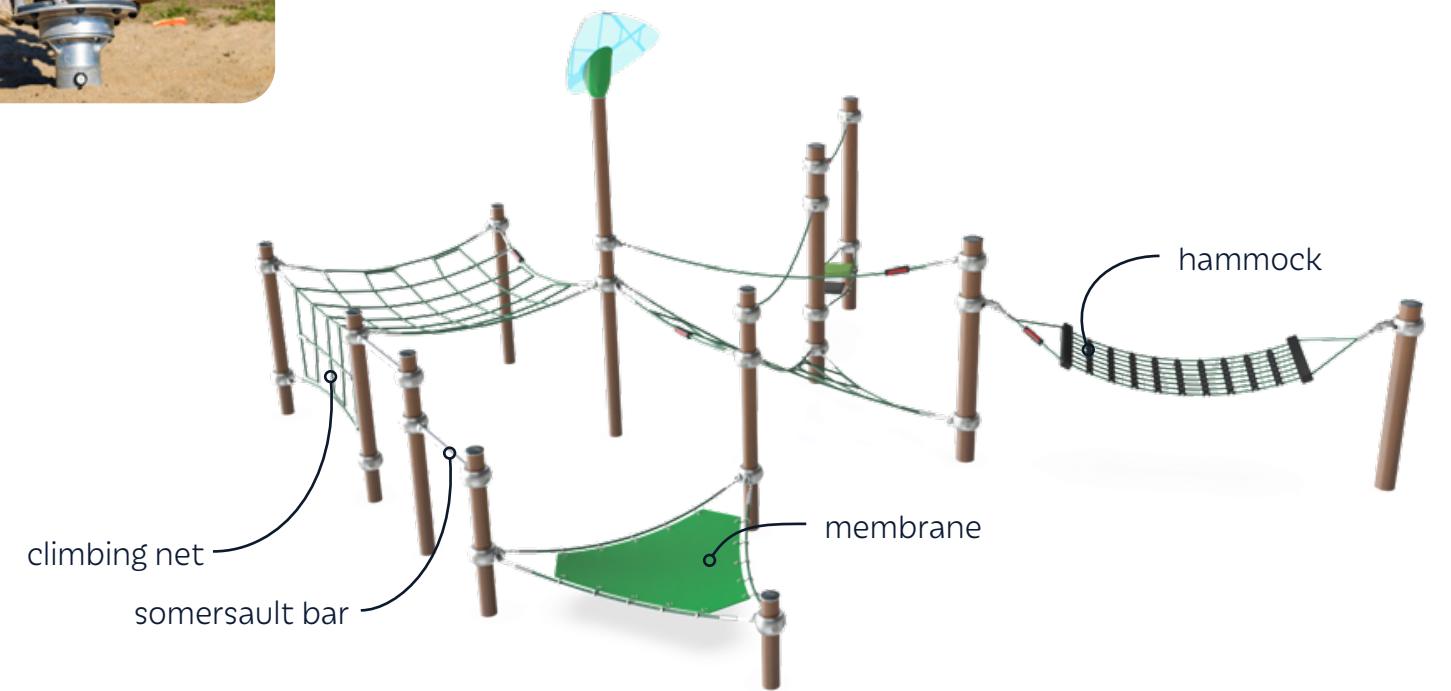
6 3-bay swings



7 Universal carousel



8 Rocket roller



9 Roloway trail



10 PIP spheres

5-12 Equipment



11 Garden tower



cliff rider



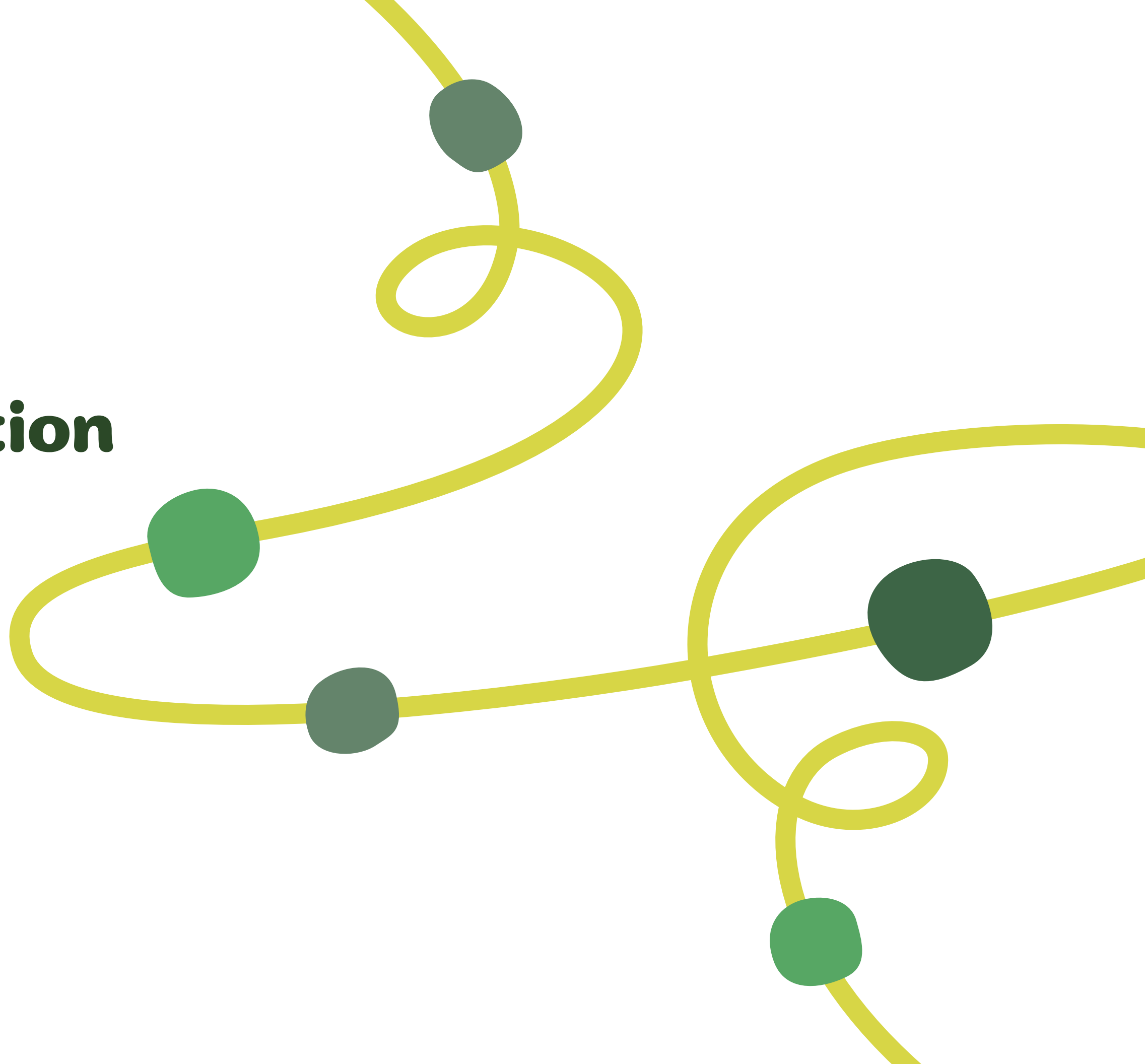
track ride

5-12 Equipment



Shading options

**Additional
information**



Play the KOMPAN Way



Creating healthier and happier communities for over 50 years

KOMPAN's journey started in 1970, when young artist Tom Lindhardt founded the company. Working closely with child experts, he set out to ignite children's instinct to play, and in doing so, he invented a completely new way of rocking with the iconic Springer.

Since then KOMPAN has launched numerous inventions that have set new global standards for ways to play, always seeking to create the world's best playground and sport & fitness solutions.



Wow, Stay, Develop

These three little words reflect our approach to sparking the human instinct to play. Our unique philosophy of product development is based on thorough research, extensive user involvement, and close collaborations with experts through the KOMPAN Play & Fitness Institute. This creates solutions that motivate people of all ages and abilities to play more, learn more, and be more physically active while always having fun.



The Wow Factor

When you see a KOMPAN site, your **imagination and excitement** ignite and drive your instinct to play. You can't wait to start playing or exercising with our inventions!

The Stay Factor

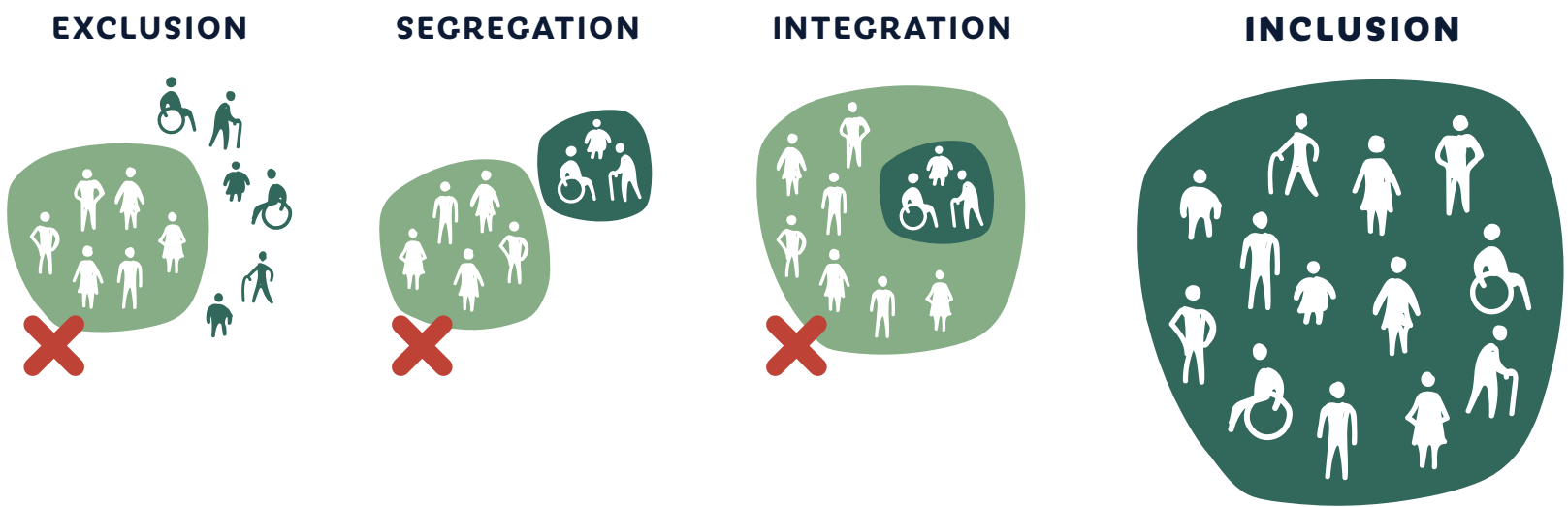
Once you start playing or exercising, we seek to make you stay. Age-appropriate solutions **continuously stimulate** new ways of playing with the right dose of challenge that is key to having fun and being physically active.

The Develop Factor

When engrossed in play we **learn and move with intensity**—often not sensing our own intellectual and physical development. KOMPAN solutions develop physical skills such as motor skills, balance, and coordination, as well as intellectual skills such as language development and cause-and-effect principles.

The belief in inclusive play runs deep at KOMPAN

“Play Together”—the idea that everyone should be included in play—is a foundational pillar in our philosophy. KOMPAN has more than 40 years of experience from designing play solutions for all, including children with disabilities. You will find universal design everywhere in our playgrounds, not least in the many openings and details that encourage play exchanges between children inside and outside the play elements.



6 Principles for Universal, Inclusive Design



Accessible



Multi-functional



360° design
(play from all sides)



Diverse play
opportunities



Clear in color and
design signals



Special solutions for
special needs

KOMPAN Play Institute



Suzanne Quinn, PhD
Manager of KPI, Americas

Suzanne is a member of the National Association for the Education of Young Children (NAEYC), the Society for Research in Child Development (SRCD), and the editorial board of Early Childhood Research Quarterly (ECRQ). She was co-editor of the 2018 Routledge Handbook of International Perspectives on Early Childhood Education with J.L. Roopnarine, J. E. Johnson and M. Patte.



Play specialists dedicated to developing, documenting, and researching playgrounds

The main work areas of the KOMPAN Play Institute are:

- Research in playground and child development
- Testing and documentation of play designs with children of all abilities
- White papers, publications, and research on playground specific topics, see: kompan.com/en/us/research/kompan-play-institute
- Consultancy and advocacy on playgrounds and city planning for play

Child development



Cognitive

Joy of learning: curiosity, understanding of causal relationships and knowledge of the world



Physical

Joy of movement: motor skills, muscle, cardio and bone density



Social-Emotional

Joy of being together: teamwork, tolerance and sense of belonging



Creative

Joy of creating: co-creation and experimenting with materials

Play and growth are intertwined

Play is one of seven emotional systems of the human brain and is on par with other human emotional instincts such as happiness, fear, or love. Children's physical, social-emotional, cognitive, and creative development is not only supported by play, it is developed through play.

Playground play and child development has roots in physical play, in fun rough-and-tumble play. But play motivation and great playgrounds also build on pretend play, dramatic play, explorative sand water play, and many more.

Different age groups also have specific play preferences and needs. The KOMPAN Play Institute recognizes age-appropriateness in the design of individual equipment and its placement.

Materials built to last



Play Panels

The 19mm EcoCore™ panels are a highly durable, eco-friendly material, which is not only recyclable after use, but also are made from >95% post-consumer recycled waste.

The new dark teal EcoCore™ panels used in KOMPAN GreenLine products are made of >95% recycled post-consumer ocean waste.



Decks

All decks are supported by uniquely designed low-carbon aluminum profiles with multiple attachment options. The gray-colored molded decks are made of 75% post-consumer PP material with a non-skid pattern and texture surface.



Hercules Rope

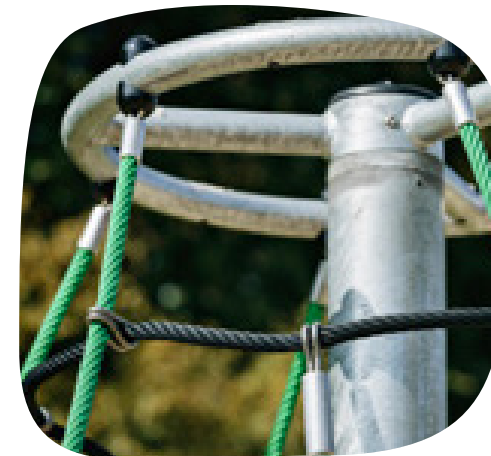
Ropes come with galvanized six-stranded steel wires and a steel core, impossible to wear through. Each strand is tightly wrapped with PES yarn in >95% post-consumer recycled material, which is melted onto each individual strand, making the ropes highly wear and vandalism-resistant.



Posts

Main posts are available in four different materials:

1. Impregnated pine wood with in-ground steel footing.
2. Galvanized steel with powder-coated top finish.
3. Color-anodized lead-free aluminum, made from low-carbon aluminum.
4. TexMade™ posts made from >95% post-consumer recycled textile and plastic waste.



Galvanized Steel

Our steel surfaces and steel frames consist of a hot-dip galvanized inside and outside with lead-free zinc according to global safety standards for playground equipment. The galvanization has excellent corrosion resistance in outside environments and is maintenance free.



Robinia Wood

Robinia wood is a very strong and long-lasting material with very high levels of natural oils. Thus Robinia wood makes durable playgrounds almost maintenance free and able to last for many years.

Industry-leading warranties



LIFETIME* warranty

- Hot-Dip galvanized parts
- Stainless steel parts
- EcoCore™ and other high-density polyethylene (HDPE) parts

* KOMPAN's LIFETIME warranty is in effect for the lifetime of the product until the product is uninstalled and/or taken out of use. In addition, KOMPAN's general terms and delivery conditions apply and supplement this warranty.



15-year warranty

- High-pressure laminate (HPL) parts
- Aluminum parts



10-year warranty

- TexMade™ posts
- Pre-galvanized posts with painted top layer
- Painted surface on galvanized or aluminum metal parts
- Stainless Steel Slides
- Electrogalvanized metal parts
- Molded PP decks
- Solid plastic parts
- Hollow plastic parts
- Transparent Poly Carbonate (PC) parts
- Rope and net constructions
- Wood-plastic composite (WPC) parts
- Robinia, ash, pine, and other wood types



5-year warranty

- Resin coated plywood parts
- Springs and ball bearing assemblies
- Graphic print on transparent PC panels
- Concrete parts
- Galaxy Connection Balls



2-year warranty

- Movable plastic & metal parts
- Rubber membranes
- Screens and electronic parts
- Sunshades & sail solutions
- Nylon nets
- Spare parts

For a greener future

Using **EcoCore™ HDPE GreenLine panels** in ocean green—made from >95% post-consumer ocean recycled waste—reduces carbon emissions by 82% CO₂ e/kg compared to panels from post-industrial waste.



-82%
CO₂ e/kg



-74%
CO₂ e/kg

Using **TexMade™ posts**—made from >95% post-consumer recycled textile and plastic waste—reduces carbon emissions by 74% CO₂ e/kg compared to steel posts.

Using **low-carbon aluminum** profiles produced with renewable energy sources reduces carbon emissions by 56% CO₂ e/kg compared to aluminum made with traditional energy sources.



-56%
CO₂ e/kg

Using natural materials, such as **robinia and pine wood** from sustainable forestry practices, results in sustainable and highly durable playgrounds.



-68%
CO₂ e/kg

Using **BLOQX™ GreenLine panels**—made from 75% post-consumer ocean recycled waste—reduces carbon emissions by 68% CO₂ e/kg compared to standard BLOQX™ panels.

The biggest impact on CO₂ emissions is through raw materials

Within the playground industry, more than 80% of carbon emissions comes from raw materials. Therefore we focus on two things that most effectively help lower CO₂ emissions:

Made Green

Push the development of our own raw materials to increasingly post-consumer recycled waste instead of using virgin materials.

Born Green

Use sustainable raw materials that are naturally green, such as robinia wood that is highly durable and does not require chemical preservatives.

An abstract graphic featuring a thick yellow line that starts on the left, curves downwards through five green circles of varying sizes, and then loops back up and to the right. The circles are in two shades of green: a darker forest green and a lighter sage green. The line itself is a vibrant yellow. In the bottom right corner, there is a large, dark green, organic shape that resembles a hill or a cloud. The text "Let's play!" is written in a bold, dark green, sans-serif font on the left side.

**Let's
play!**