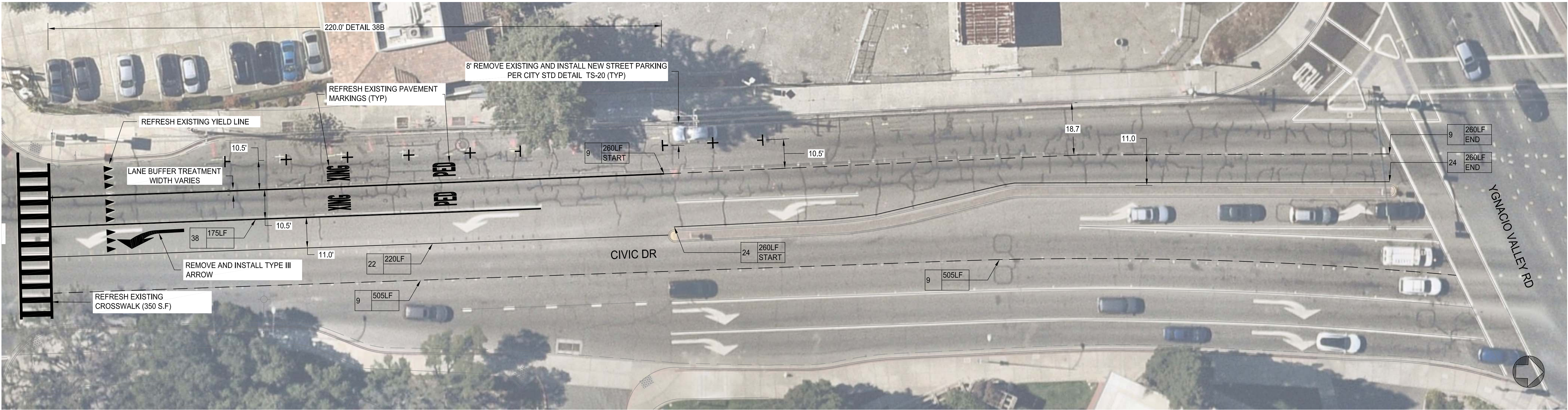
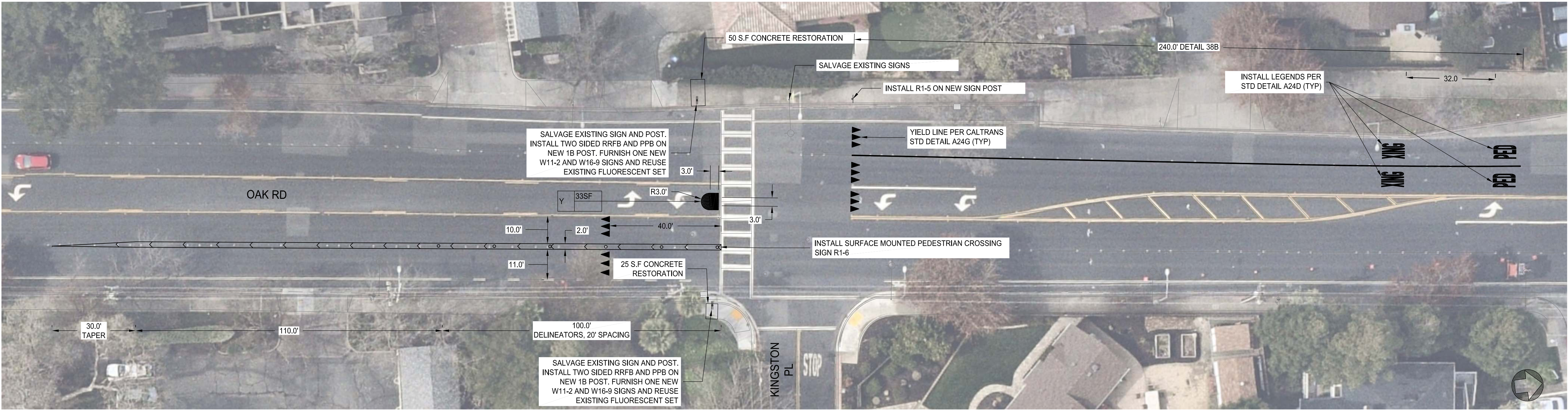


CONTINUED ON SHEET C1



CIVIC DRIVE AND YGNACIO VALLEY ROAD

1" = 20'



OAK RD AND KINGSTON

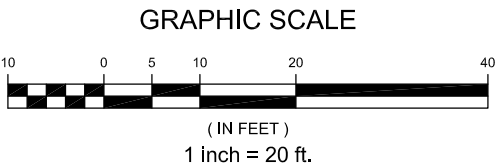
1" = 20'

QUANTITIES FOR CIVIC FROM BROADWAY TO YGNACIO

CROSSWALK AND PARKING STRIPING	(SF)	755	LANE BUFFER TREATMENT	(LF)	630
WHITE LEGENDS	(SF)	470	DELINEATORS	(EA)	15
6" WHITE STRIPE	(LF)	405	SURFACE MOUNTED SIGN	(EA)	3
STRIPING DETAIL 9	(LF)	920	NEW R1-5 SIGN	(EA)	1
STRIPING DETAIL 22	(LF)	225			
STRIPING DETAIL 24	(LF)	260			
STRIPING DETAIL 29	(LF)	550			
STRIPING DETAIL 38	(LF)	175			
STRIPING DETAIL 38B	(LF)	220			
STRIPING DETAIL 40	(LF)	75			

QUANTITIES FOR CIVIC AT KINGSTON

LANE BUFFER TREATMENT	(LF)	240	NEW 1B POLE AND FOUNDATION	(EA)	2
DELINEATORS	(EA)	5	PPB ON 1B POLE	(EA)	2
STRIPING DETAIL 38B	(LF)	240	TWO SIDED RRFB	(EA)	2
WHITE LEGENDS	(SF)	125	CONCRETE RESTORATION	(SF)	75
YELLOW THERMOPLASTIC	(SF)	33			
NEW W11-2 SIGN	(EA)	2			
NEW W16-7P SIGN	(EA)	2			
NEW R1-5 SIGN	(EA)	2			
NEW SURFACE MOUNTED SIGN	(EA)	1			
NEW SIGN POST AND FOUNDATION	(EA)	2			



CITY OF  
**WALNUT CREEK**  
1666 N. MAIN STREET  
WALNUT CREEK, CA 94596  
Ph: 925-943-5839  
www.walnut-creek.org

DATE:	SCALE:	WORK ORDER:
3/20/25	AS SHOWN	CP010156
DESIGN:	DRAWN:	CHECKED:
RAC	RAC	BB

2025 UNSIGNALIZED PEDESTRIAN  
CROSSING IMPROVEMENTS  
PROPOSED IMPROVEMENTS

REV	DESCRIPTION	DATE

PREPARED UNDER  
THE DIRECTION OF



CONTRACT NO.  
**24-07**

CP#  
**10156**

SHEET NUMBER

**C2**

**3** OF **12**