

BLOCK D BERKELEY PARK

M.B. 10-238

TAX CODE AREA 8904

37



37

COVENTRY ROAD

VALLEY ROAD

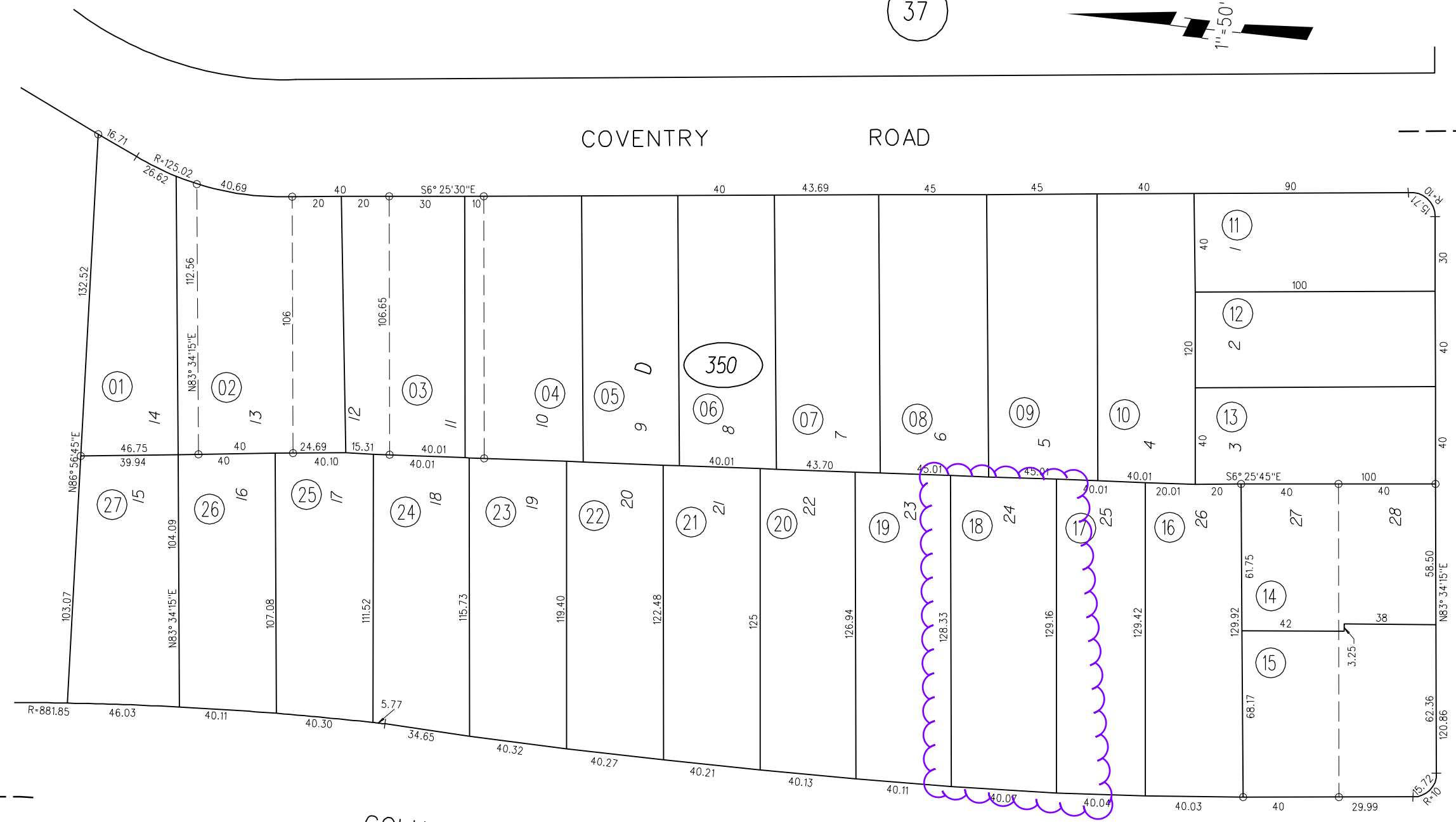
34

COLUSA

AVENUE

P.B.  
504

350



# Aerial



## Map Legend

Assessment  
Parcels

### Planning Layers (DCD)

Unincorporated

City Limits

Board of  
Supervisors'  
Districts

### Base Data

Address Points

This map is a user generated, static output from an internet mapping application and is intended for reference use only. Data layers that appear on this map may or may not be accurate, current, or otherwise reliable.

THIS MAP IS NOT TO BE USED FOR NAVIGATION. CCMAP is maintained by Contra Costa County Department of Information Technology, County GIS. Data layers contained within the CCMAP application are provided by various Contra Costa County Departments. Please direct all data inquiries to the appropriate department.

Spatial Reference  
PCS: WGS 1984 Web Mercator Auxiliary Sphere  
Datum: WGS 1984



# General Plan - RM



## Map Legend

Assessment  
Parcels

Planning Layers  
(DCD)

General Plan

RM (Residential  
Medium  
Density) (7-17  
du/na)

Unincorporated

City Limits

Board of  
Supervisors'  
Districts

Base Data

Address Points

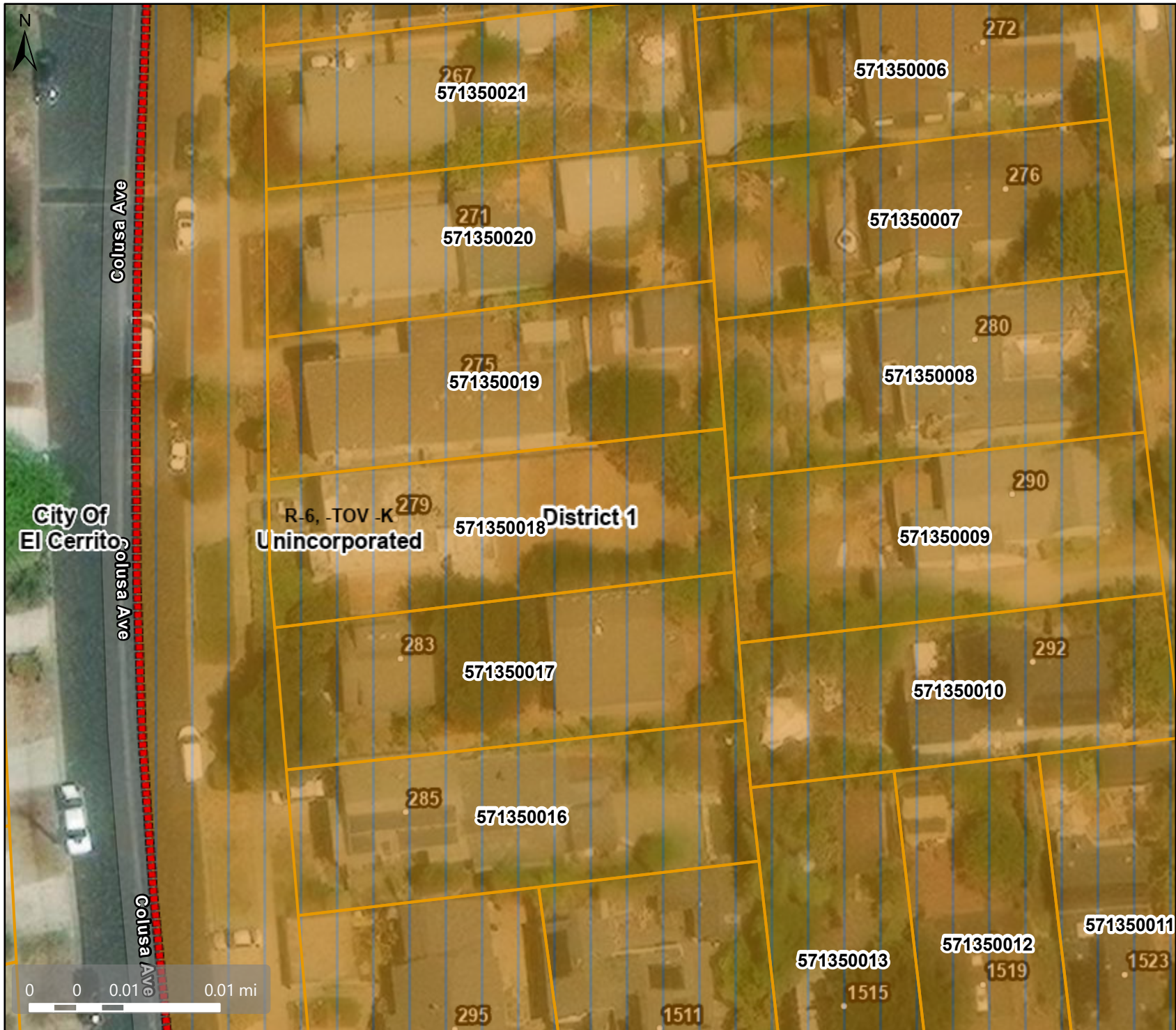
This map is a user generated, static output from an internet mapping application and is intended for reference use only. Data layers that appear on this map may or may not be accurate, current, or otherwise reliable.

THIS MAP IS NOT TO BE USED FOR NAVIGATION. CCMMap is maintained by Contra Costa County Department of Information Technology, County GIS. Data layers contained within the CCMMap application are provided by various Contra Costa County Departments. Please direct all data inquiries to the appropriate department.

Spatial Reference  
PCS: WGS 1984 Web Mercator Auxiliary Sphere  
Datum: WGS 1984



# Zoning - R-6, -TOV, -K



## Map Legend

Assessment  
Parcels

Planning Layers  
(DCD)

Zoning

ZONE\_OVER

R-6 -TOV -K

(Tree  
Obstruction and  
Kensington)

Unincorporated

City Limits

Board of  
Supervisors'  
Districts

Base Data

Address Points

This map is a user generated, static output from an internet mapping application and is intended for reference use only. Data layers that appear on this map may or may not be accurate, current, or otherwise reliable.

THIS MAP IS NOT TO BE USED FOR NAVIGATION. CCMMap is maintained by Contra Costa County Department of Information Technology, County GIS. Data layers contained within the CCMMap application are provided by various Contra Costa County Departments. Please direct all data inquiries to the appropriate department.

Spatial Reference  
PCS: WGS 1984 Web Mercator Auxiliary Sphere  
Datum: WGS 1984