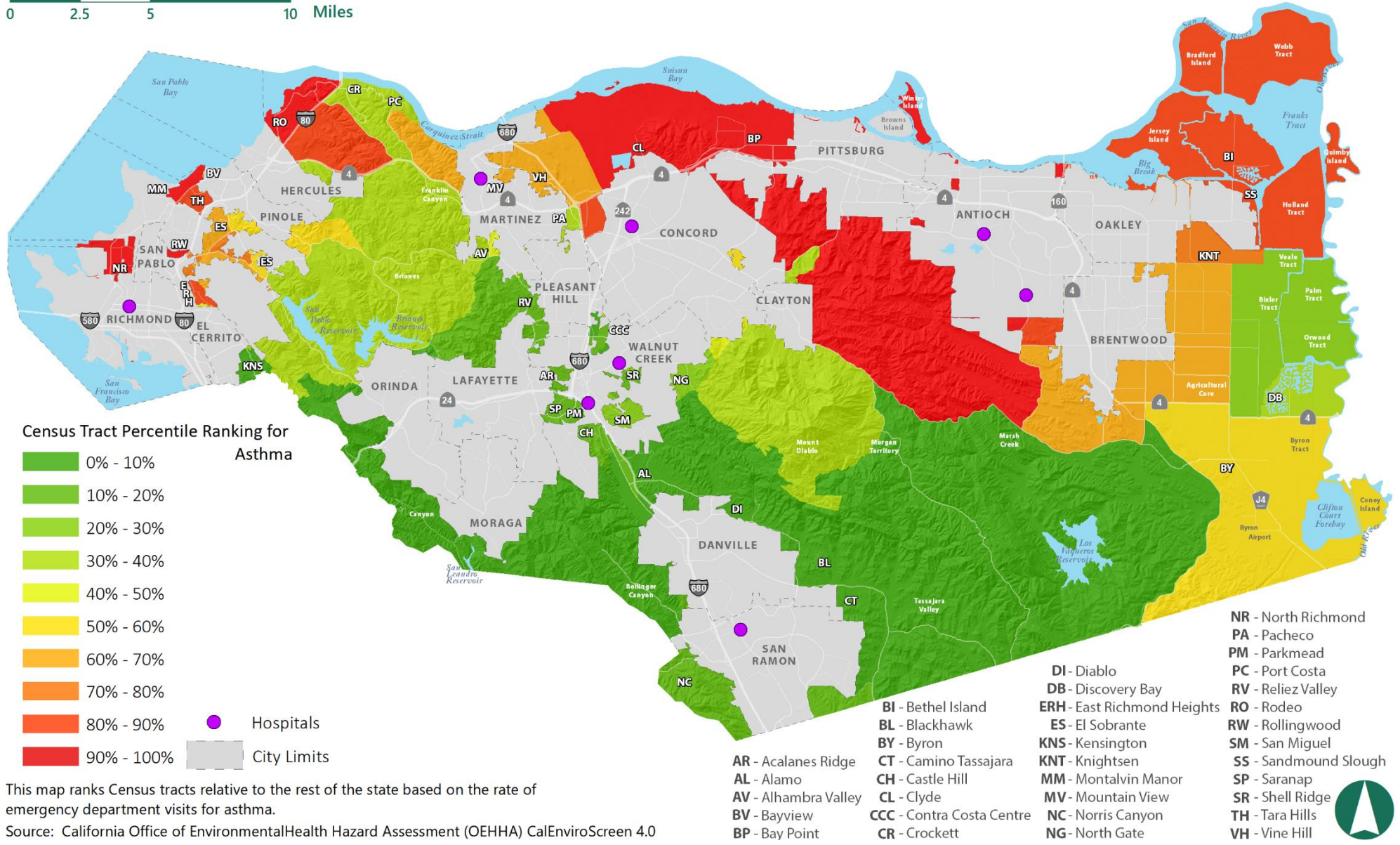


ATTACHMENT A.2

DRAFT 2045 GENERAL PLAN REVISED MAPS

FIGURE SC-2 ASTHMA RANKINGS RELATIVE TO THE STATE

0 2.5 5 10 Miles

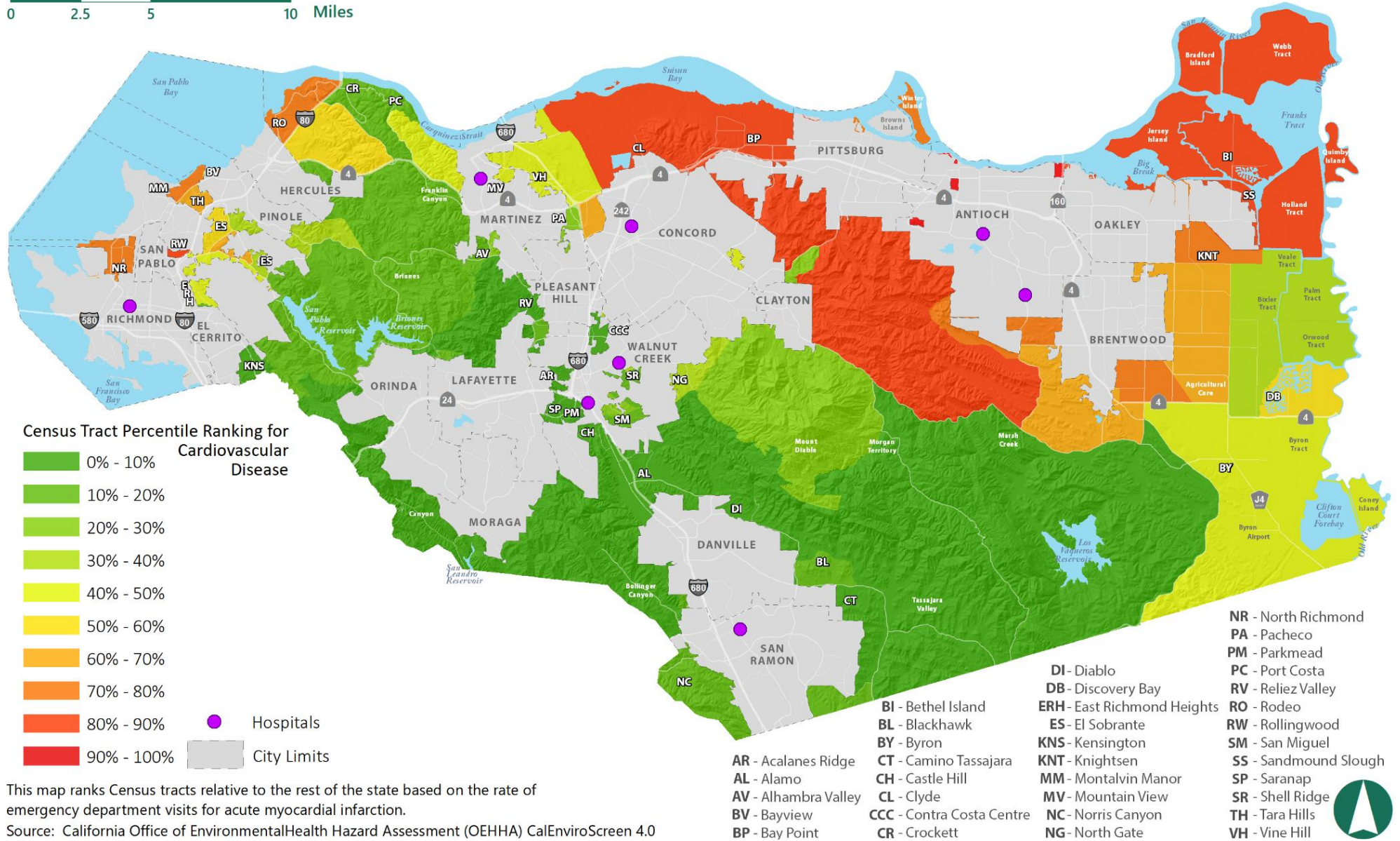


This map ranks Census tracts relative to the rest of the state based on the rate of emergency department visits for asthma.
 Source: California Office of Environmental Health Hazard Assessment (OEHHA) CalEnviroScreen 4.0



FIGURE SC-3 CARDIOVASCULAR DISEASE RANKINGS RELATIVE TO THE STATE

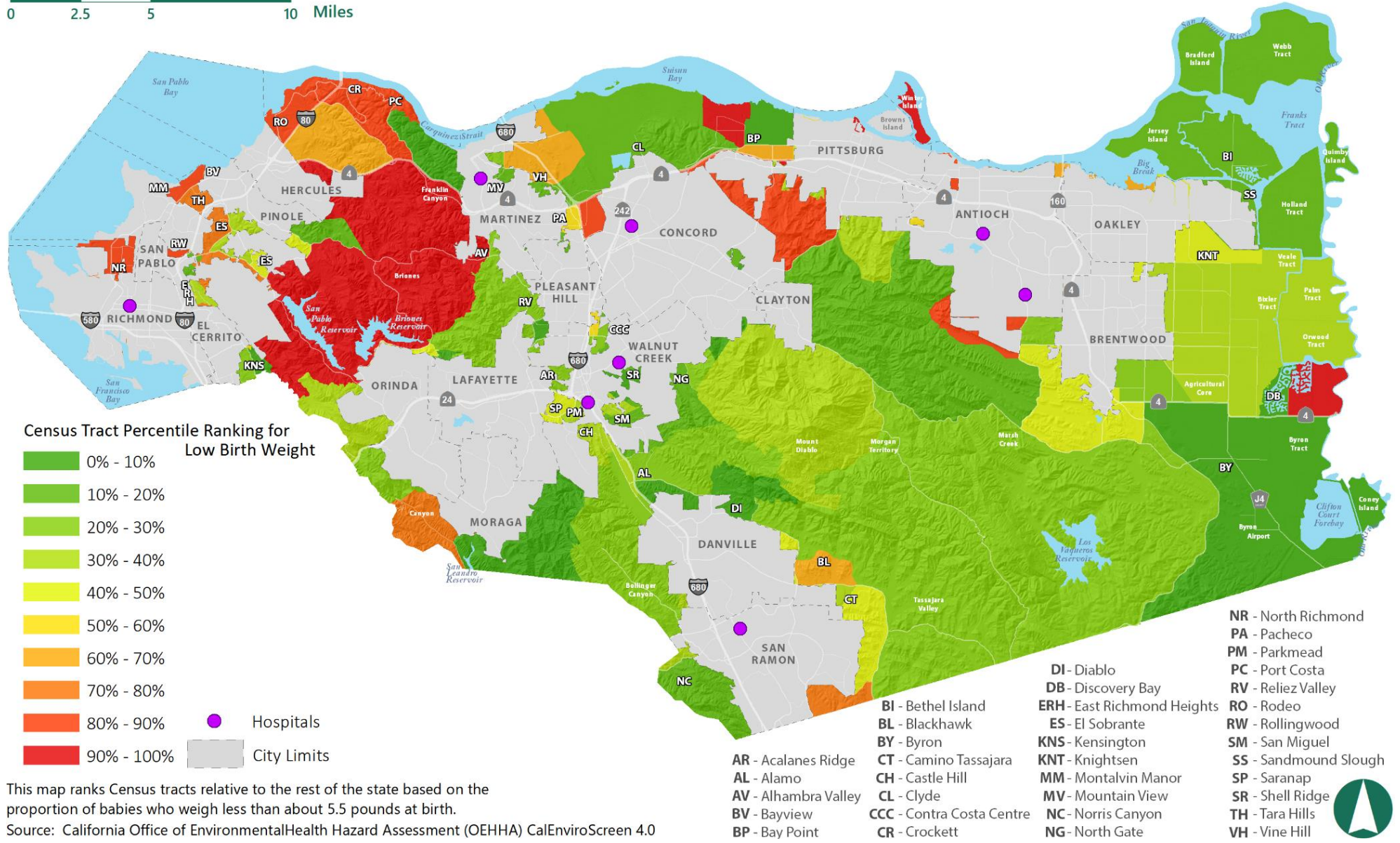
0 2.5 5 10 Miles



This map ranks Census tracts relative to the rest of the state based on the rate of emergency department visits for acute myocardial infarction.
 Source: California Office of Environmental Health Hazard Assessment (OEHHA) CalEnviroScreen 4.0

FIGURE SC-4 LOW BIRTH WEIGHT RANKINGS RELATIVE TO THE STATE

0 2.5 5 10 Miles

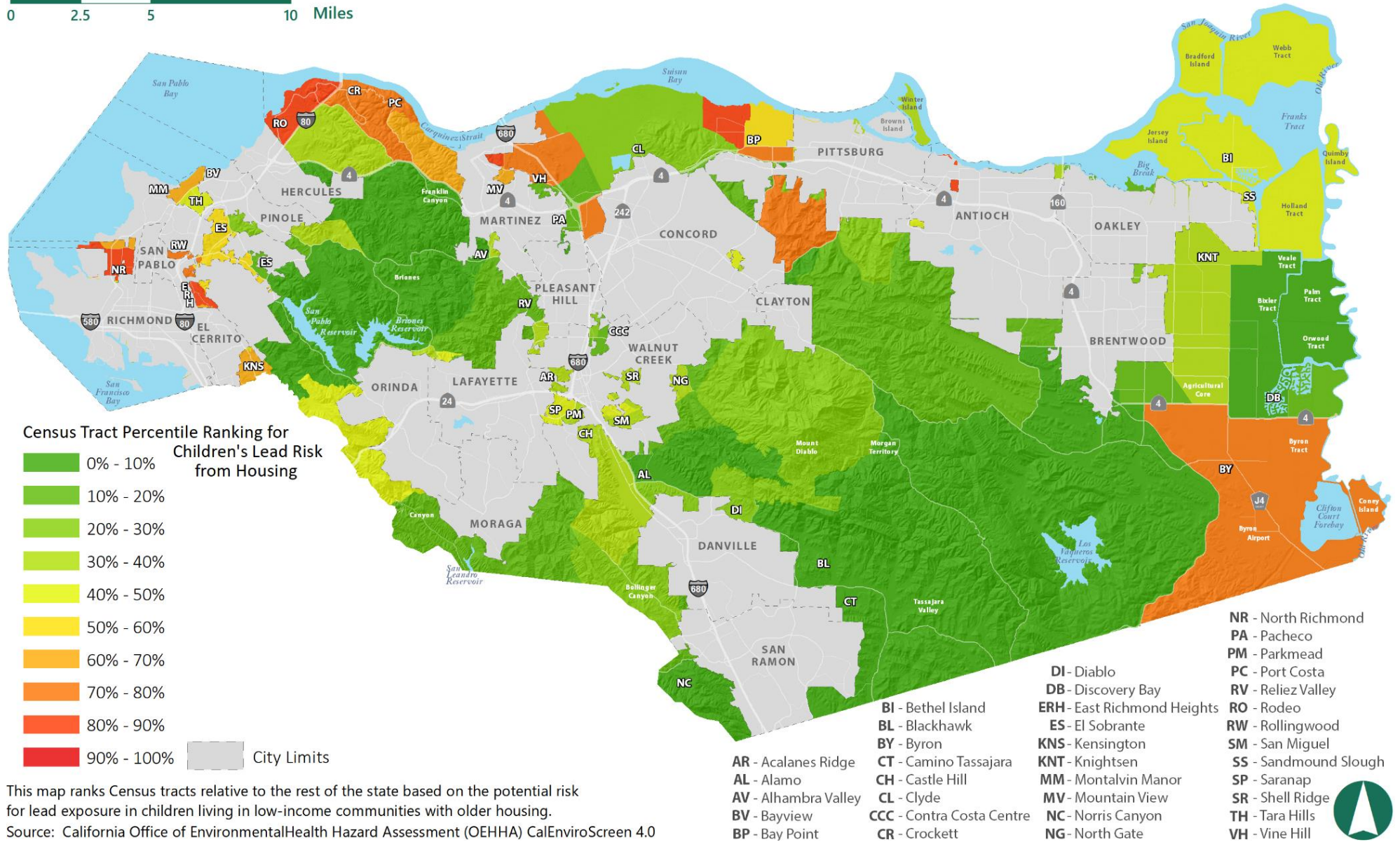


This map ranks Census tracts relative to the rest of the state based on the proportion of babies who weigh less than about 5.5 pounds at birth.
 Source: California Office of Environmental Health Hazard Assessment (OEHHA) CalEnviroScreen 4.0



FIGURE SC-5 CHILDREN'S LEAD RISK FROM HOUSING RANKINGS RELATIVE TO THE STATE

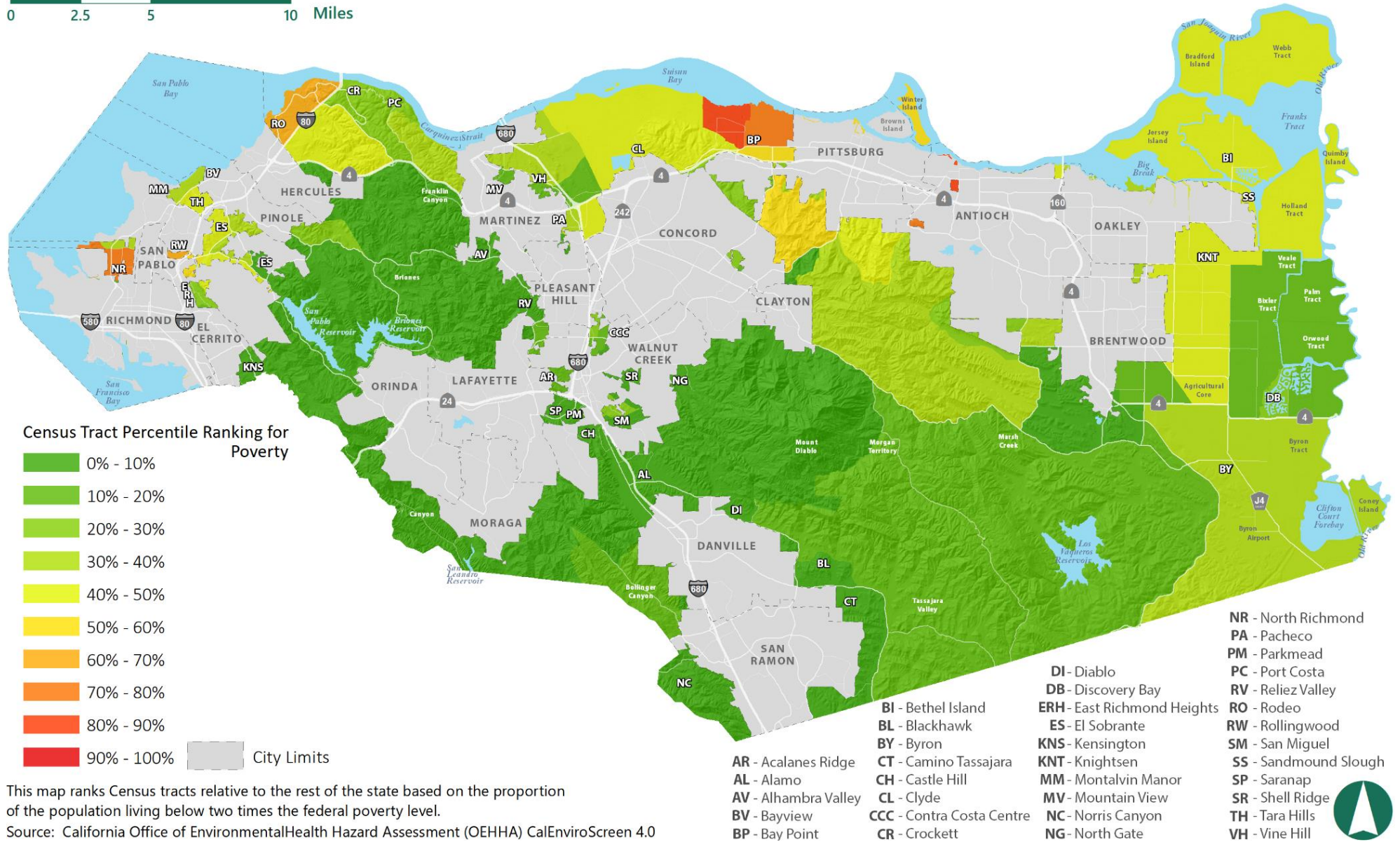
0 2.5 5 10 Miles



This map ranks Census tracts relative to the rest of the state based on the potential risk for lead exposure in children living in low-income communities with older housing.
 Source: California Office of Environmental Health Hazard Assessment (OEHHA) CalEnviroScreen 4.0

FIGURE SC-6 POVERTY RANKINGS RELATIVE TO THE STATE

0 2.5 5 10 Miles

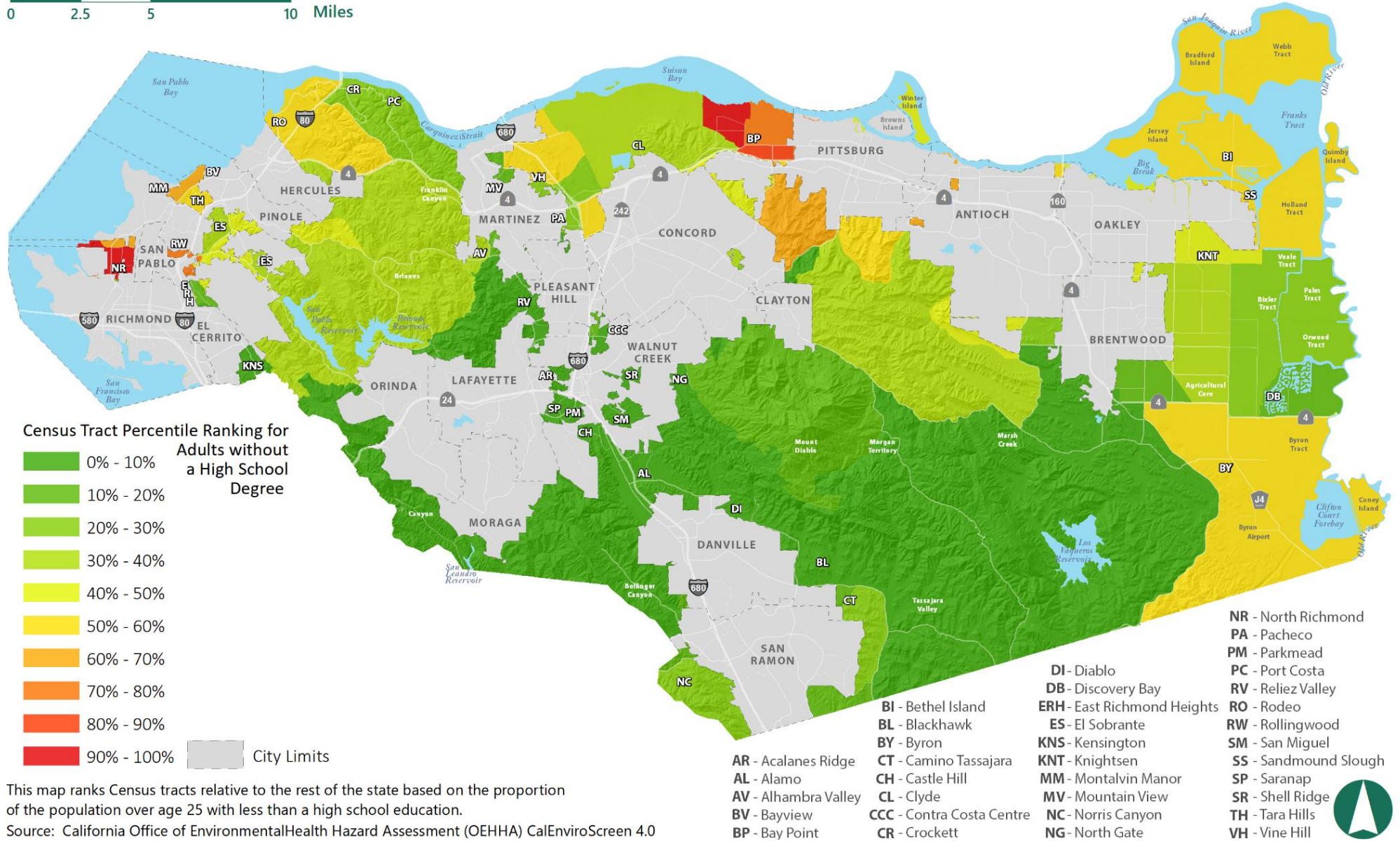


This map ranks Census tracts relative to the rest of the state based on the proportion of the population living below two times the federal poverty level.
 Source: California Office of Environmental Health Hazard Assessment (OEHHA) CalEnviroScreen 4.0



FIGURE SC-7 ADULTS WITHOUT A HIGH SCHOOL DEGREE RANKINGS RELATIVE TO THE STATE

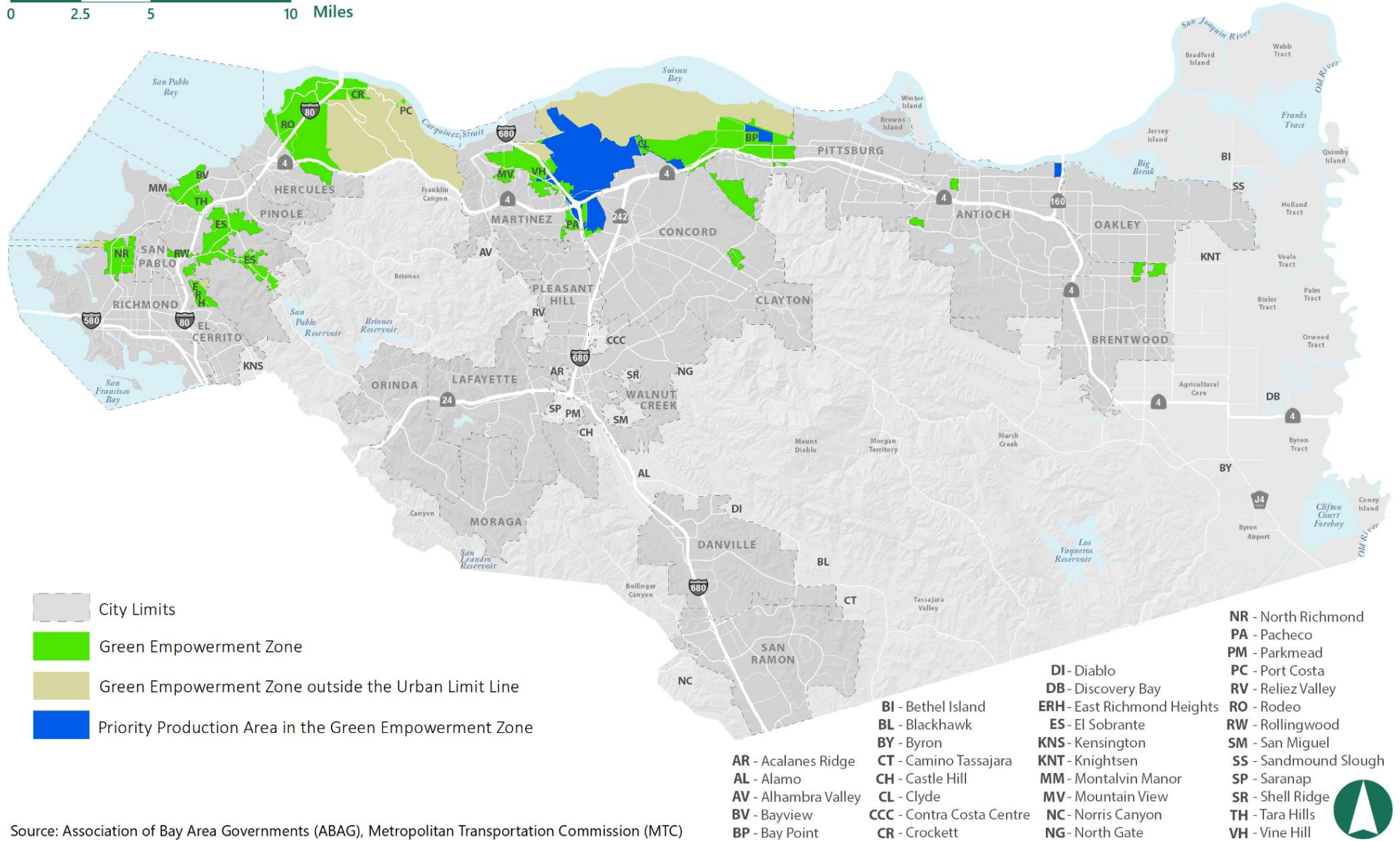
0 2.5 5 10 Miles



This map ranks Census tracts relative to the rest of the state based on the proportion of the population over age 25 with less than a high school education.
 Source: California Office of Environmental Health Hazard Assessment (OEHHA) CalEnviroScreen 4.0

FIGURE SC-8 GREEN EMPOWERMENT ZONE AND PRIORITY PRODUCTION AREAS

0 2.5 5 10 Miles



Source: Association of Bay Area Governments (ABAG), Metropolitan Transportation Commission (MTC)

FIGURE LU-1 GENERAL PLAN LAND USE MAP

0 2.5 5 10 Miles

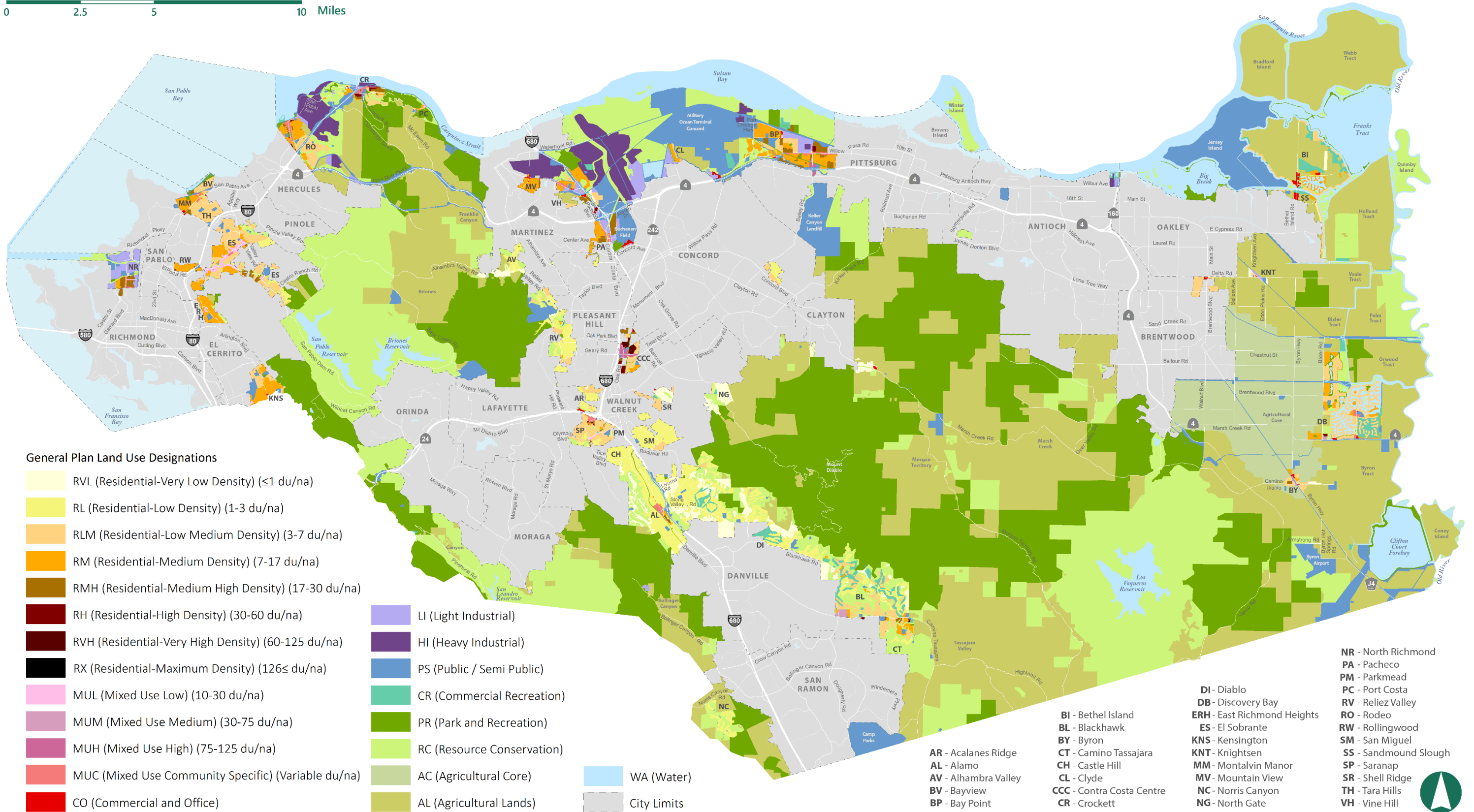
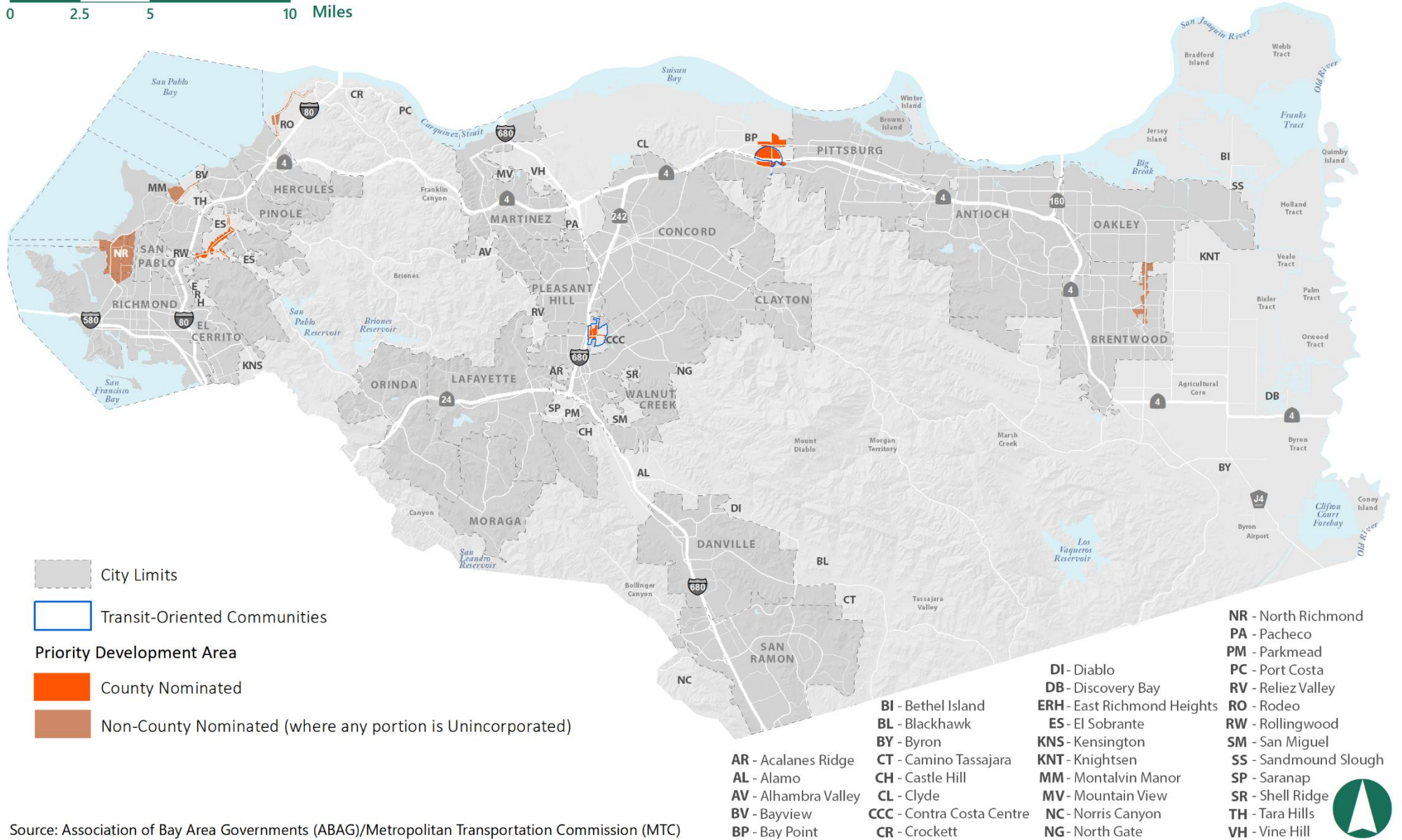




FIGURE LU-5 PRIORITY DEVELOPMENT AREAS

0 2.5 5 10 Miles



- City Limits
- Transit-Oriented Communities
- Priority Development Area**
- County Nominated
- Non-County Nominated (where any portion is Unincorporated)

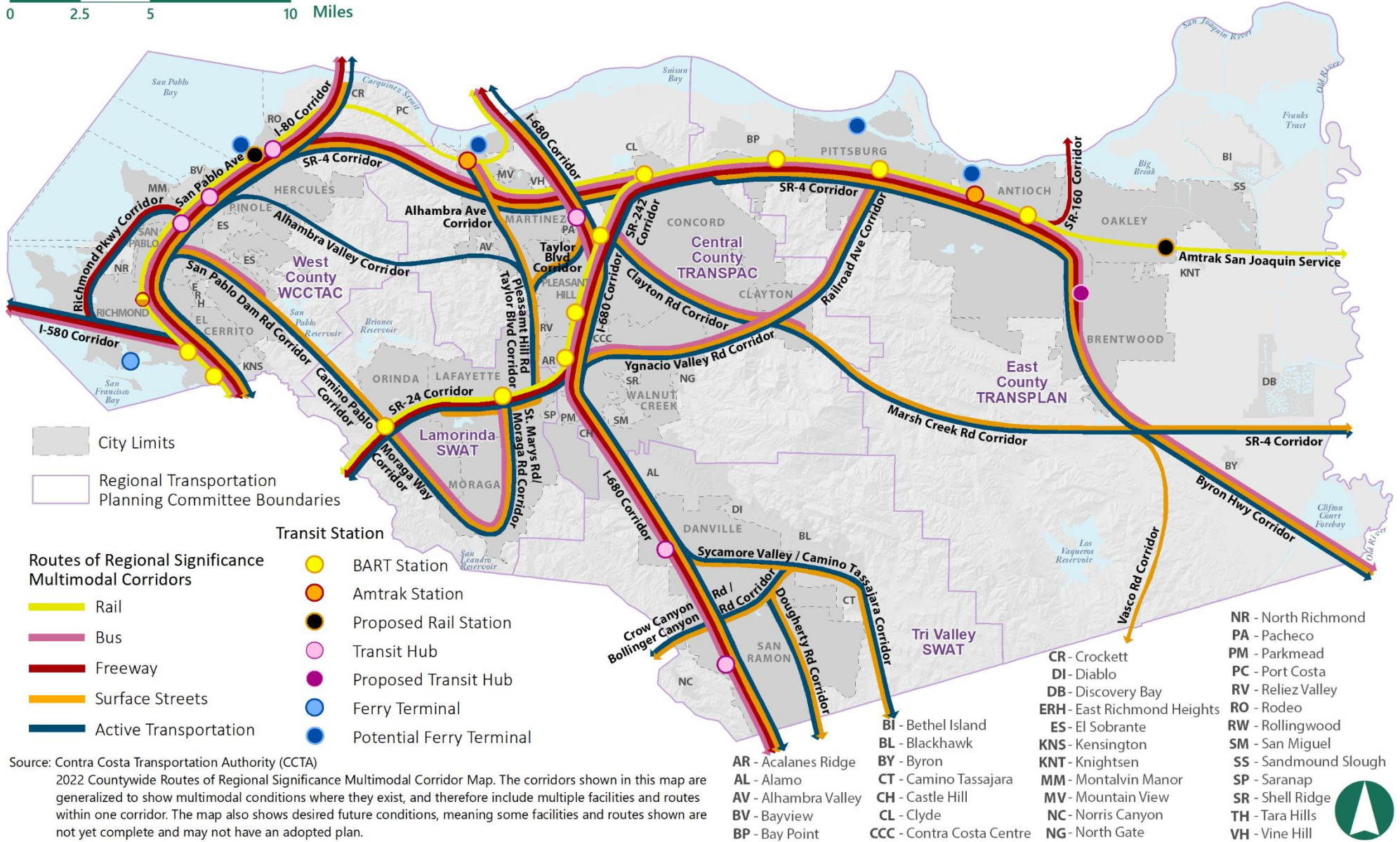
- AR** - Acalanes Ridge
- AL** - Alamo
- AV** - Alhambra Valley
- BV** - Bayview
- BP** - Bay Point
- BI** - Bethel Island
- BL** - Blackhawk
- BY** - Byron
- CT** - Camino Tassajara
- CH** - Castle Hill
- CL** - Clyde
- CCC** - Contra Costa Centre
- CR** - Crockett
- DI** - Diablo
- DB** - Discovery Bay
- ERH** - East Richmond Heights
- ES** - El Sobrante
- KNS** - Kensington
- KNT** - Knightsen
- MM** - Montalvin Manor
- MV** - Mountain View
- NC** - Norris Canyon
- NG** - North Gate
- NR** - North Richmond
- PA** - Pacheco
- PM** - Parkmead
- PC** - Port Costa
- RV** - Reliez Valley
- RO** - Rodeo
- RW** - Rollingwood
- SM** - San Miguel
- SP** - Saranap
- SR** - Shell Ridge
- TH** - Tara Hills
- VH** - Vine Hill

Source: Association of Bay Area Governments (ABAG)/Metropolitan Transportation Commission (MTC)



FIGURE TR-2 ROUTES OF REGIONAL SIGNIFICANCE

0 2.5 5 10 Miles



Source: Contra Costa Transportation Authority (CCTA)
 2022 Countywide Routes of Regional Significance Multimodal Corridor Map. The corridors shown in this map are generalized to show multimodal conditions where they exist, and therefore include multiple facilities and routes within one corridor. The map also shows desired future conditions, meaning some facilities and routes shown are not yet complete and may not have an adopted plan.



FIGURE TR-3 ROADWAY CLASSIFICATIONS

0 2.5 5 10 Miles

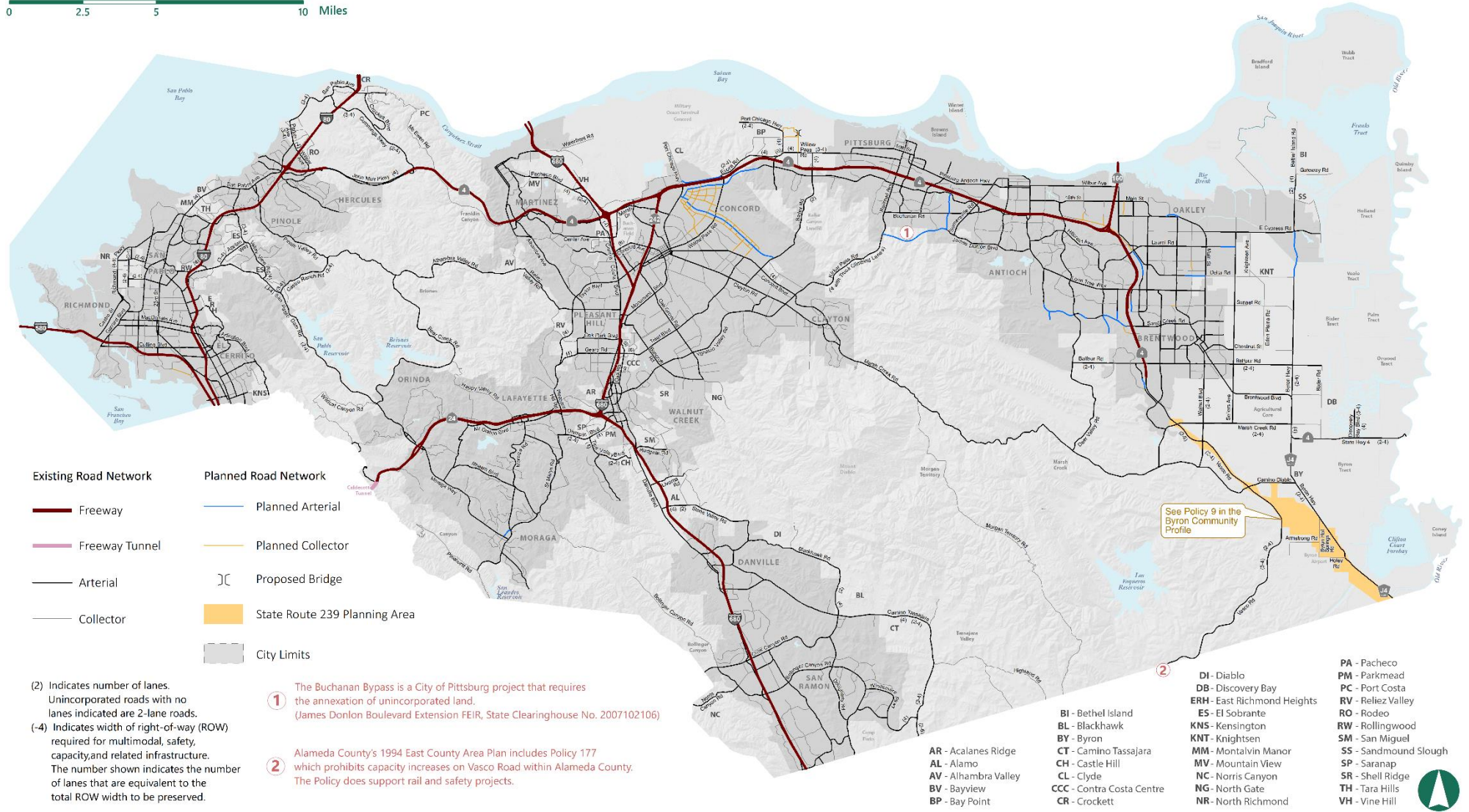
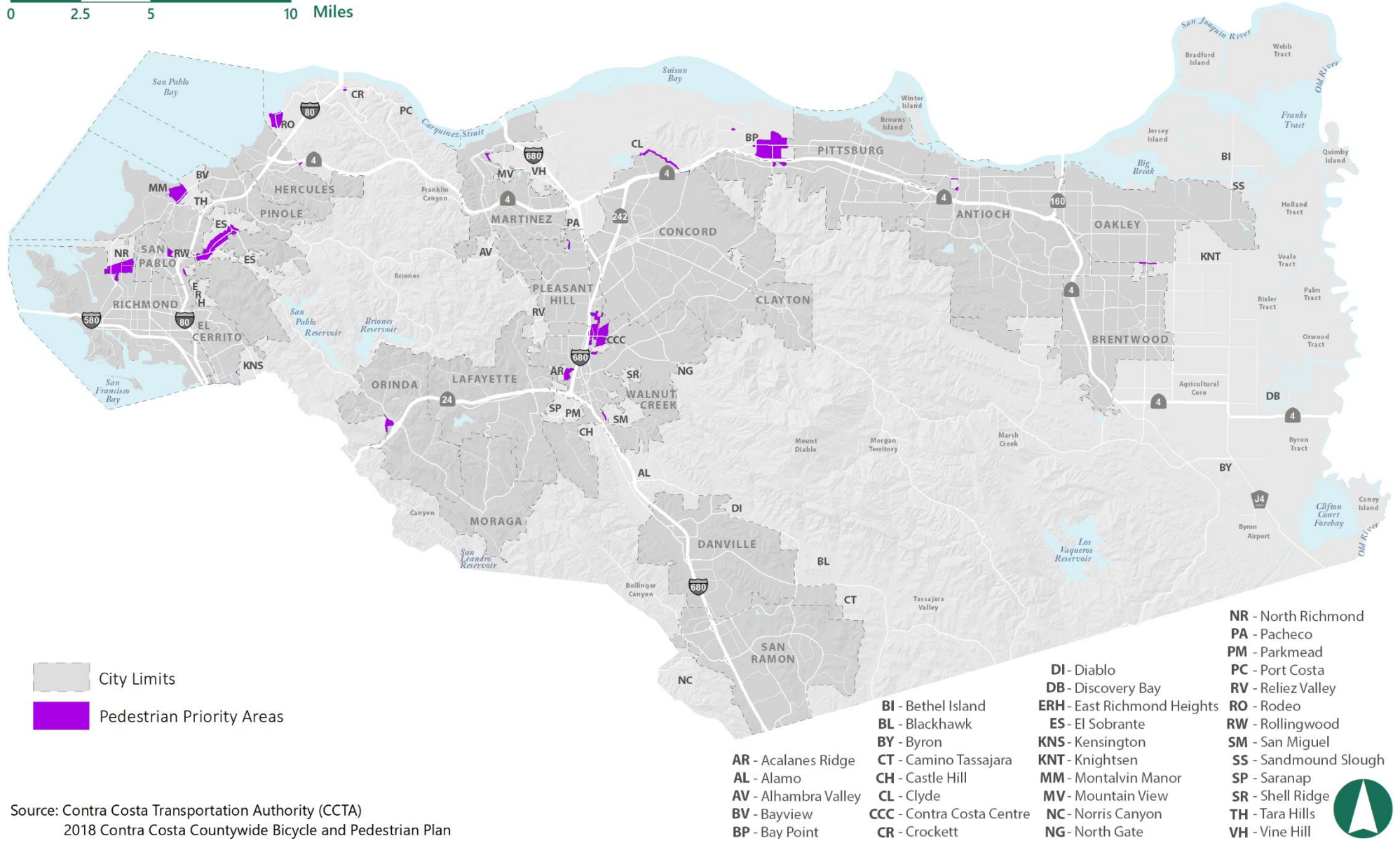


FIGURE TR-5 PEDESTRIAN PRIORITY AREAS

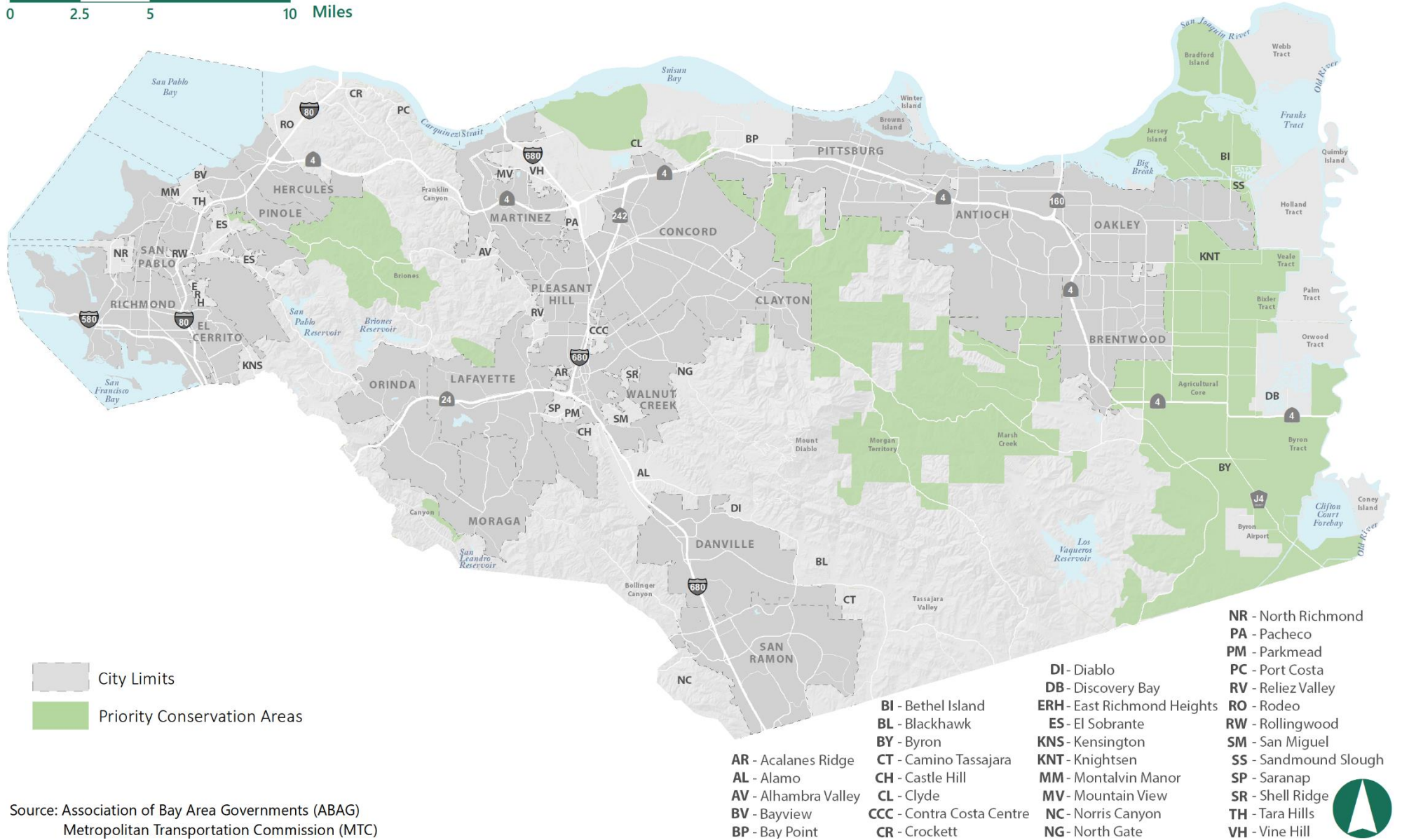
0 2.5 5 10 Miles



Source: Contra Costa Transportation Authority (CCTA)
2018 Contra Costa Countywide Bicycle and Pedestrian Plan

FIGURE COS-4 PRIORITY CONSERVATION AREAS

0 2.5 5 10 Miles



Source: Association of Bay Area Governments (ABAG)
Metropolitan Transportation Commission (MTC)

FIGURE COS-6 WATERSHEDS

0 2.5 5 10 Miles

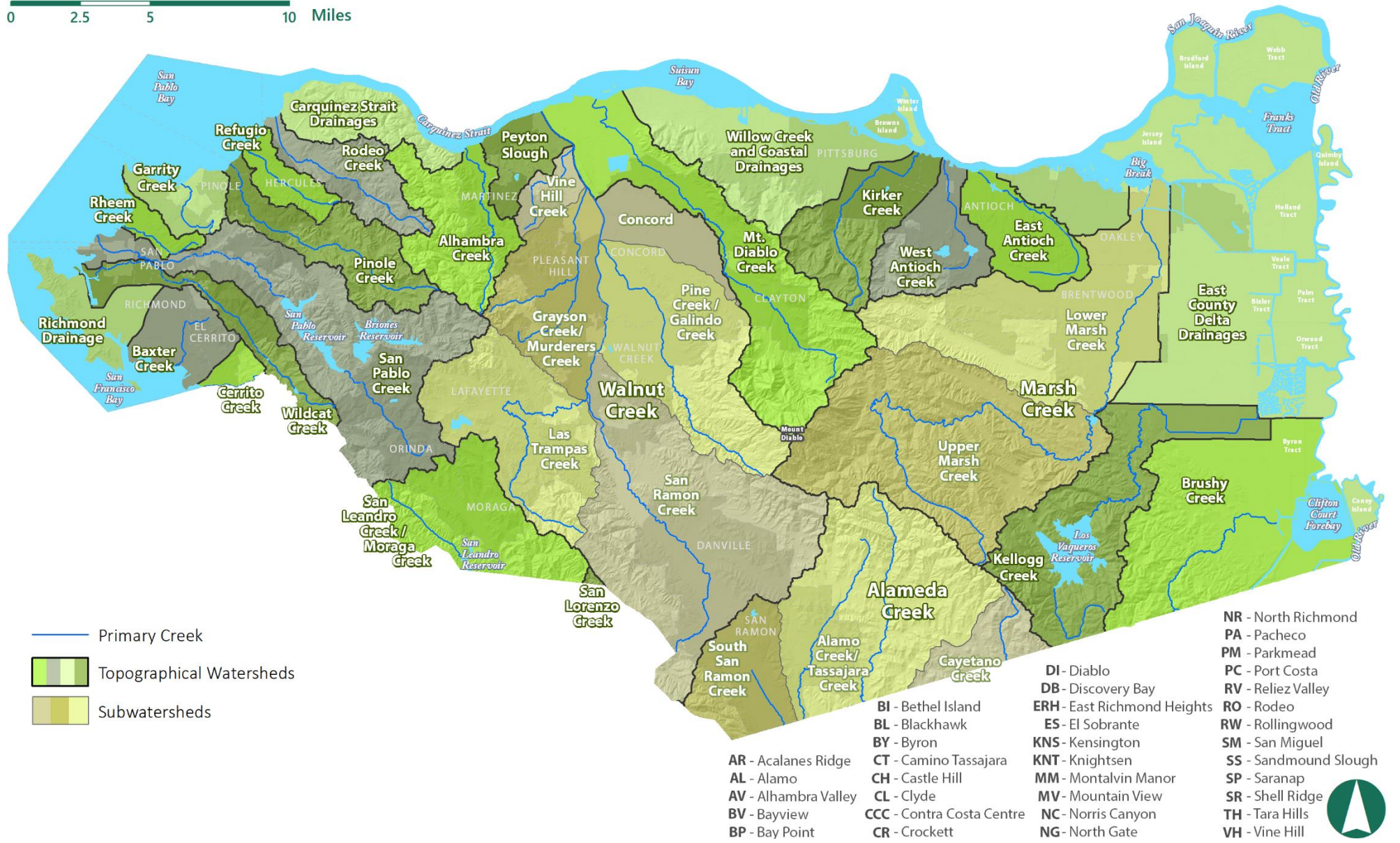
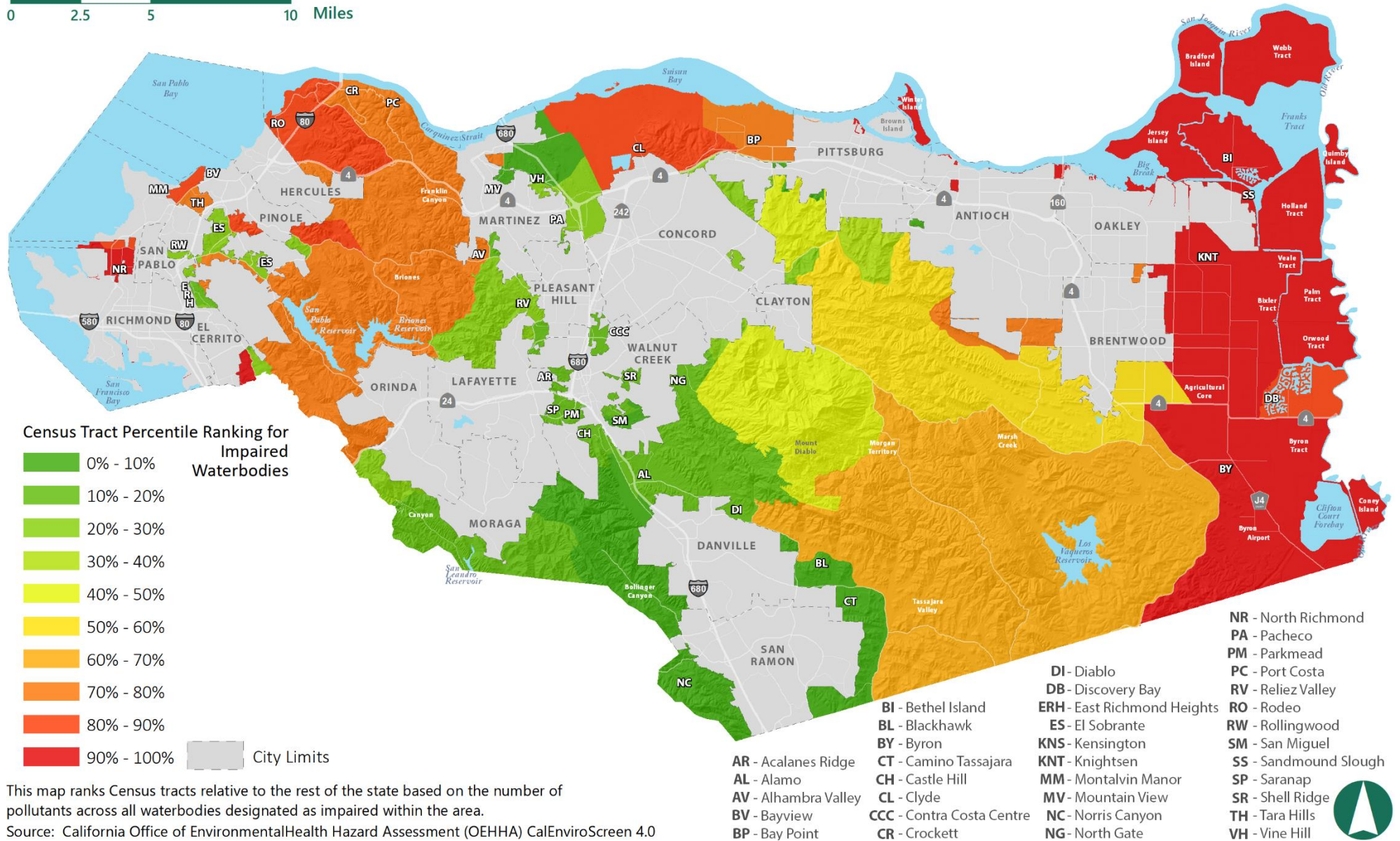




FIGURE COS-8 IMPAIRED WATERBODIES RANKINGS RELATIVE TO THE STATE

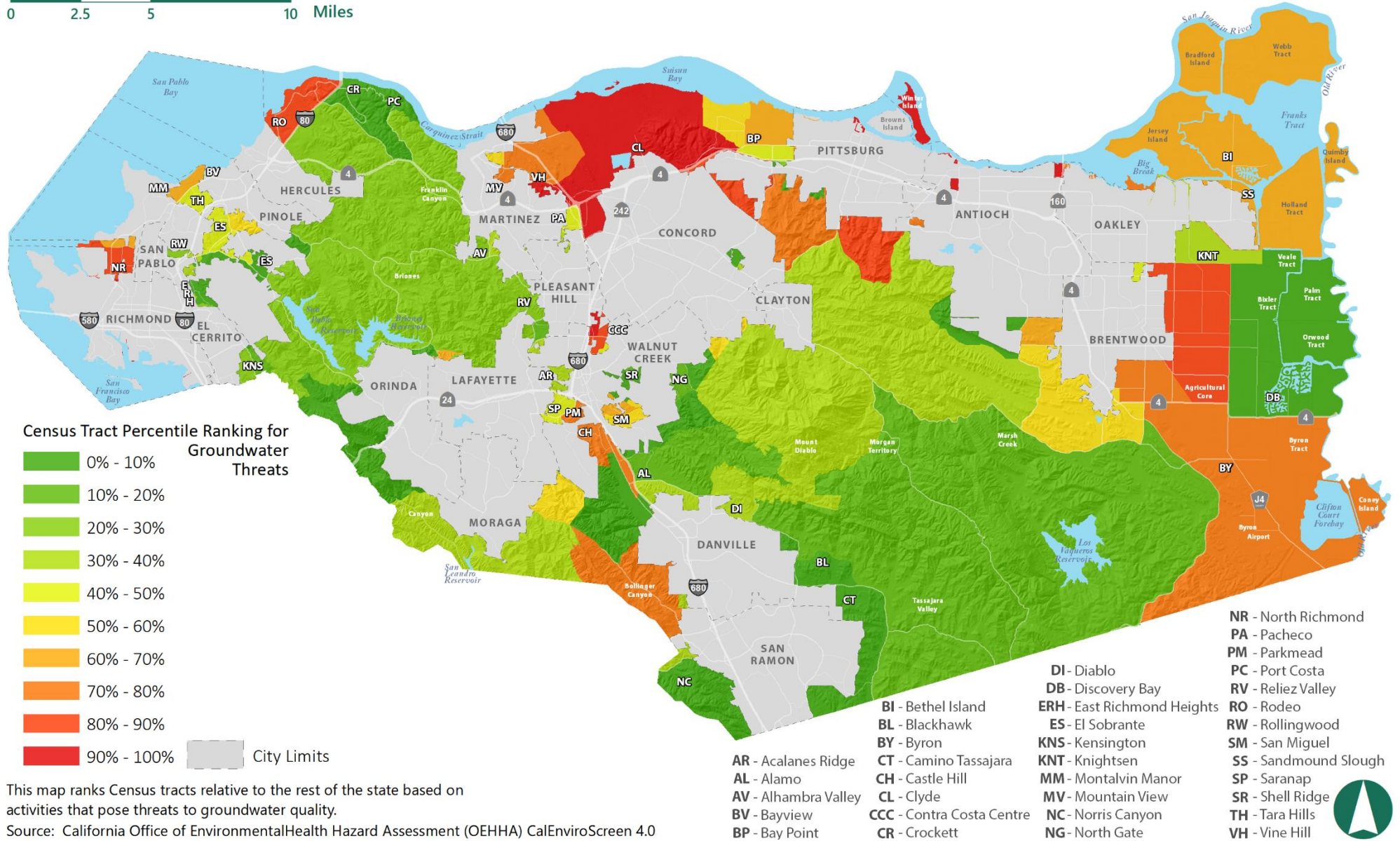
0 2.5 5 10 Miles



This map ranks Census tracts relative to the rest of the state based on the number of pollutants across all waterbodies designated as impaired within the area.
 Source: California Office of Environmental Health Hazard Assessment (OEHHA) CalEnviroScreen 4.0

FIGURE COS-9 GROUNDWATER THREAT RANKINGS RELATIVE TO THE STATE

0 2.5 5 10 Miles

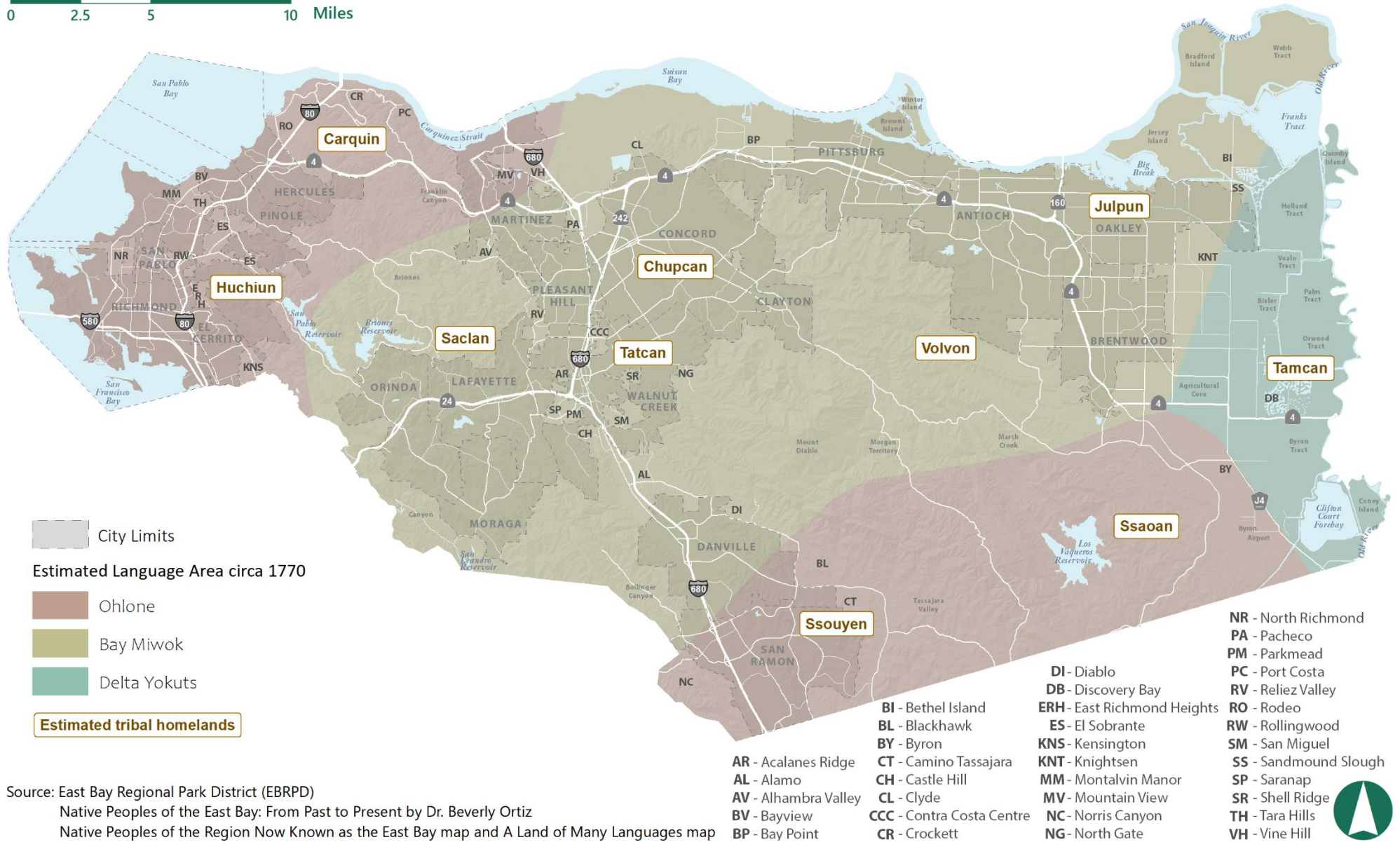


This map ranks Census tracts relative to the rest of the state based on activities that pose threats to groundwater quality.
 Source: California Office of Environmental Health Hazard Assessment (OEHHA) CalEnviroScreen 4.0



FIGURE COS-11 ESTIMATED TRIBAL HOMELANDS AND LANGUAGE AREAS

0 2.5 5 10 Miles

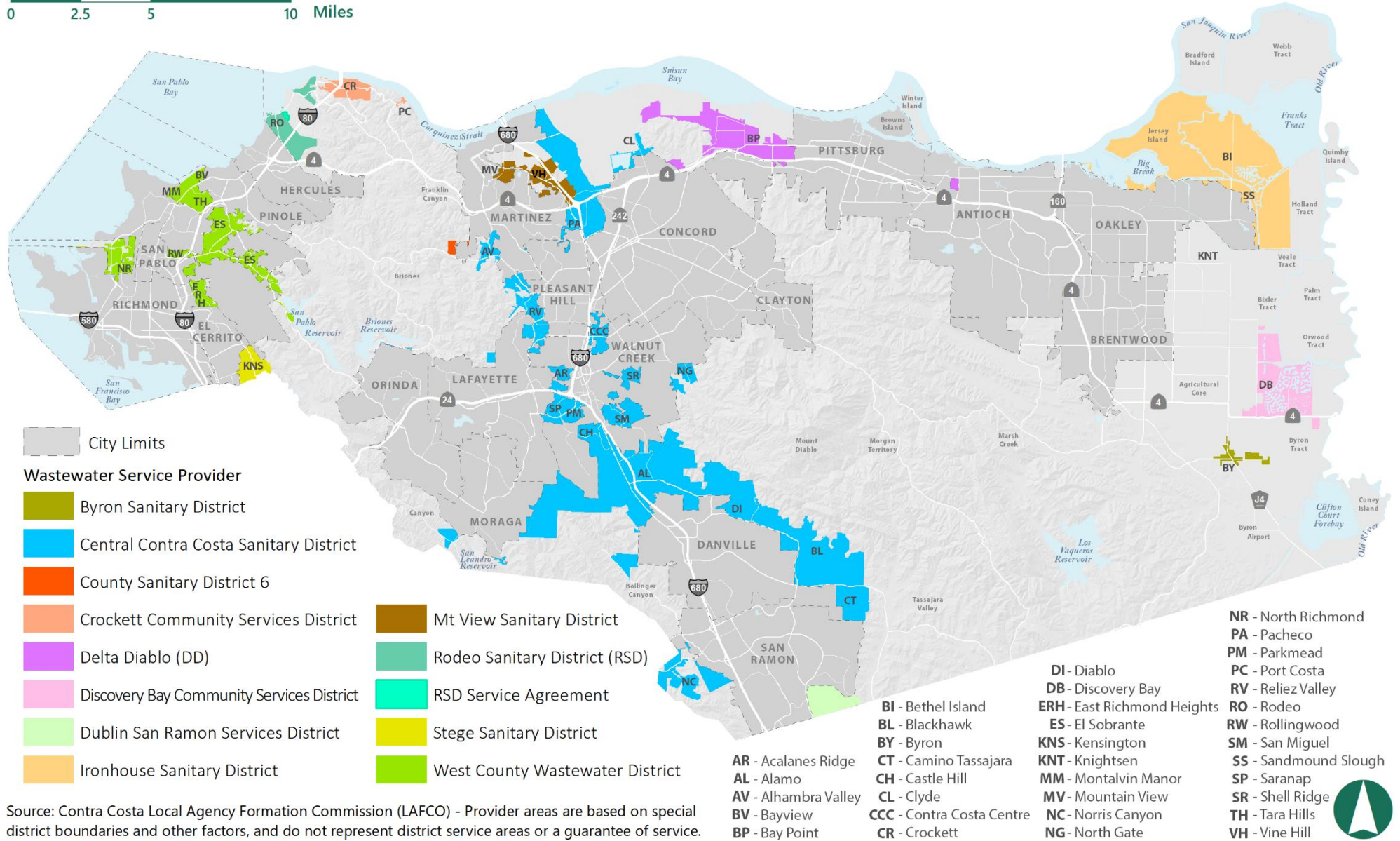


Source: East Bay Regional Park District (EBRPD)
 Native Peoples of the East Bay: From Past to Present by Dr. Beverly Ortiz
 Native Peoples of the Region Now Known as the East Bay map and A Land of Many Languages map



FIGURE PFS-3 WASTEWATER SERVICE PROVIDERS

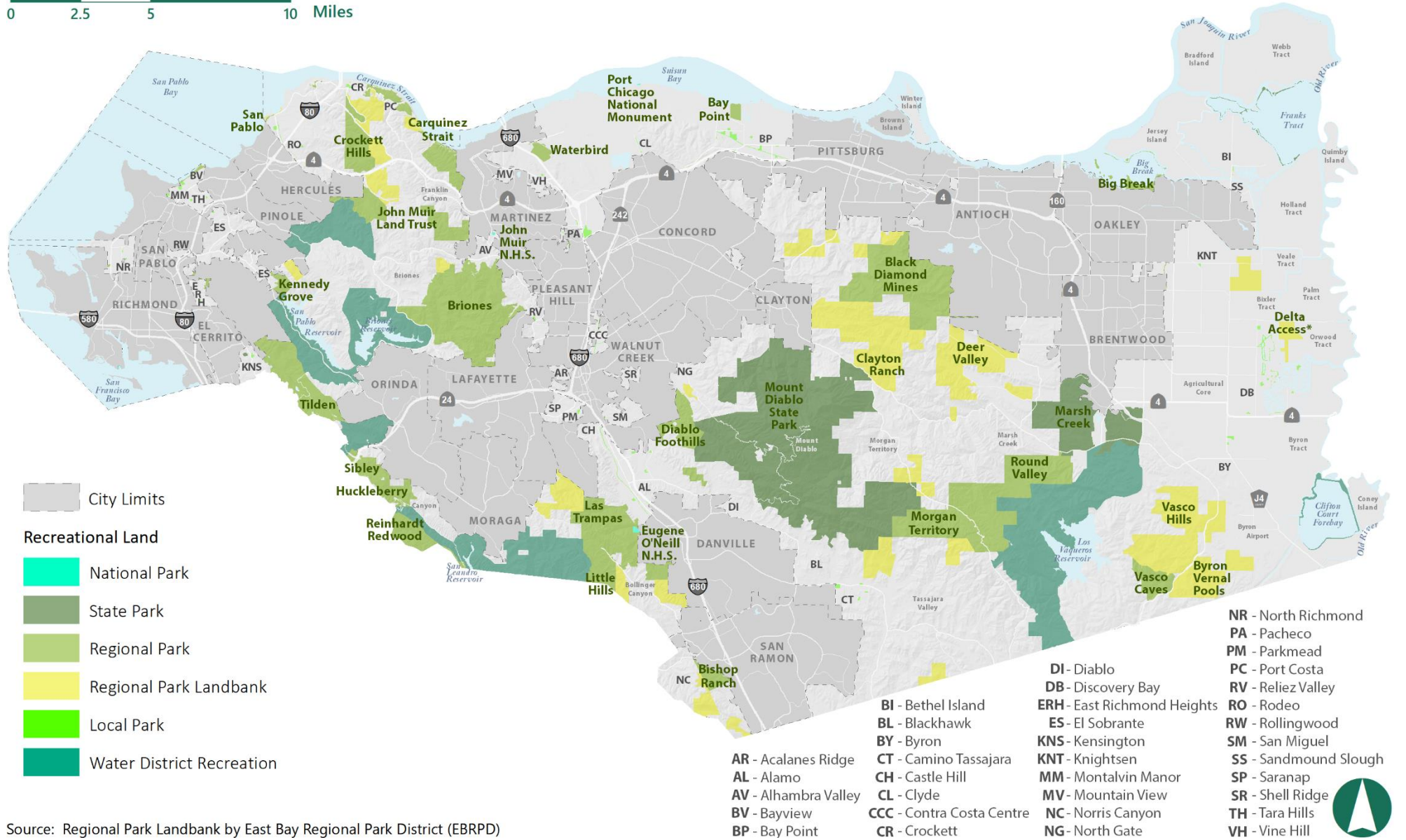
0 2.5 5 10 Miles



Source: Contra Costa Local Agency Formation Commission (LAFCO) - Provider areas are based on special district boundaries and other factors, and do not represent district service areas or a guarantee of service.

FIGURE PFS-7 FEDERAL, STATE, REGIONAL, AND LOCAL RECREATION LANDS

0 2.5 5 10 Miles

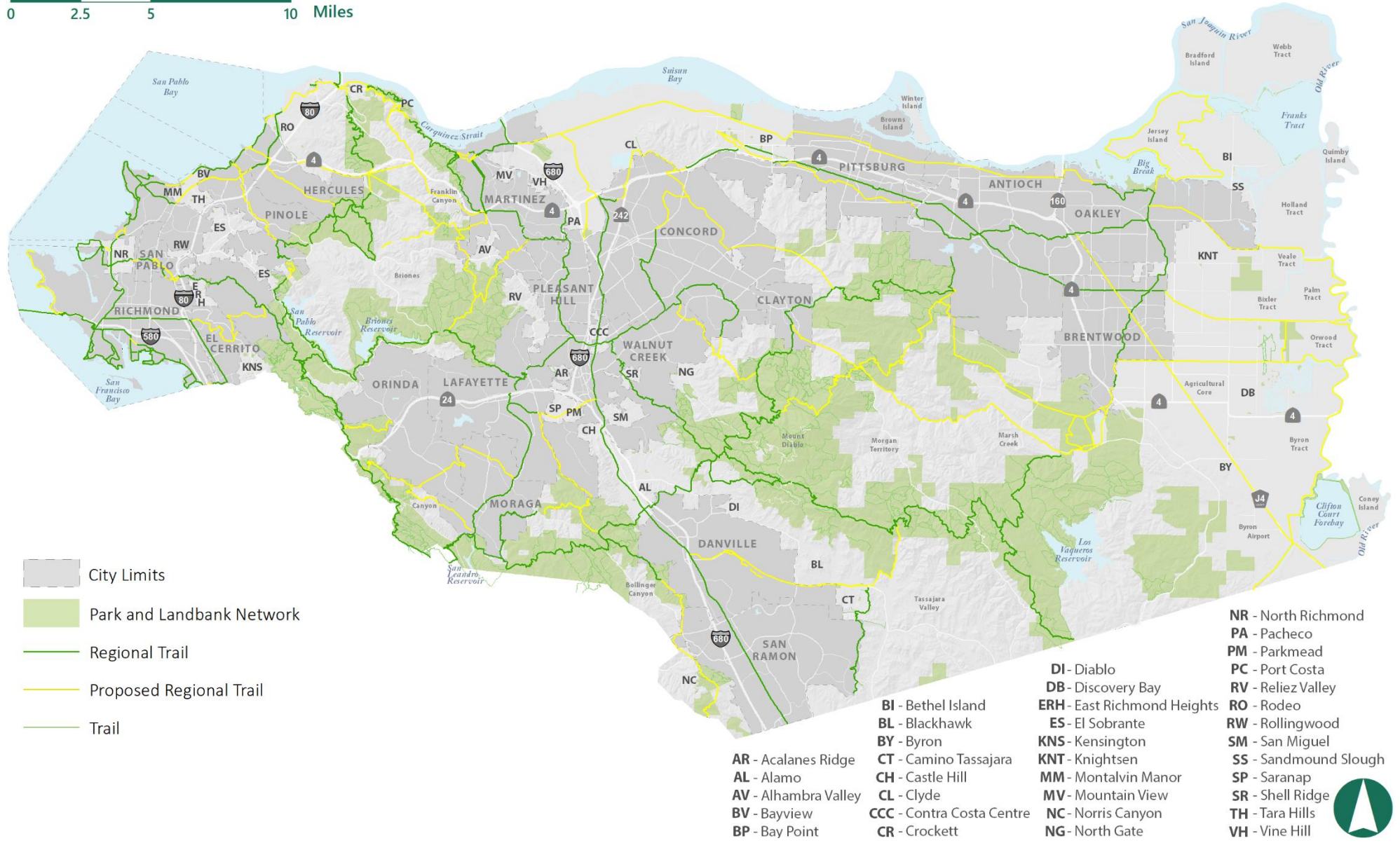


Source: Regional Park Landbank by East Bay Regional Park District (EBRPD)



FIGURE PFS-8 TRAILS NETWORK

0 2.5 5 10 Miles



- City Limits
- Park and Landbank Network
- Regional Trail
- Proposed Regional Trail
- Trail

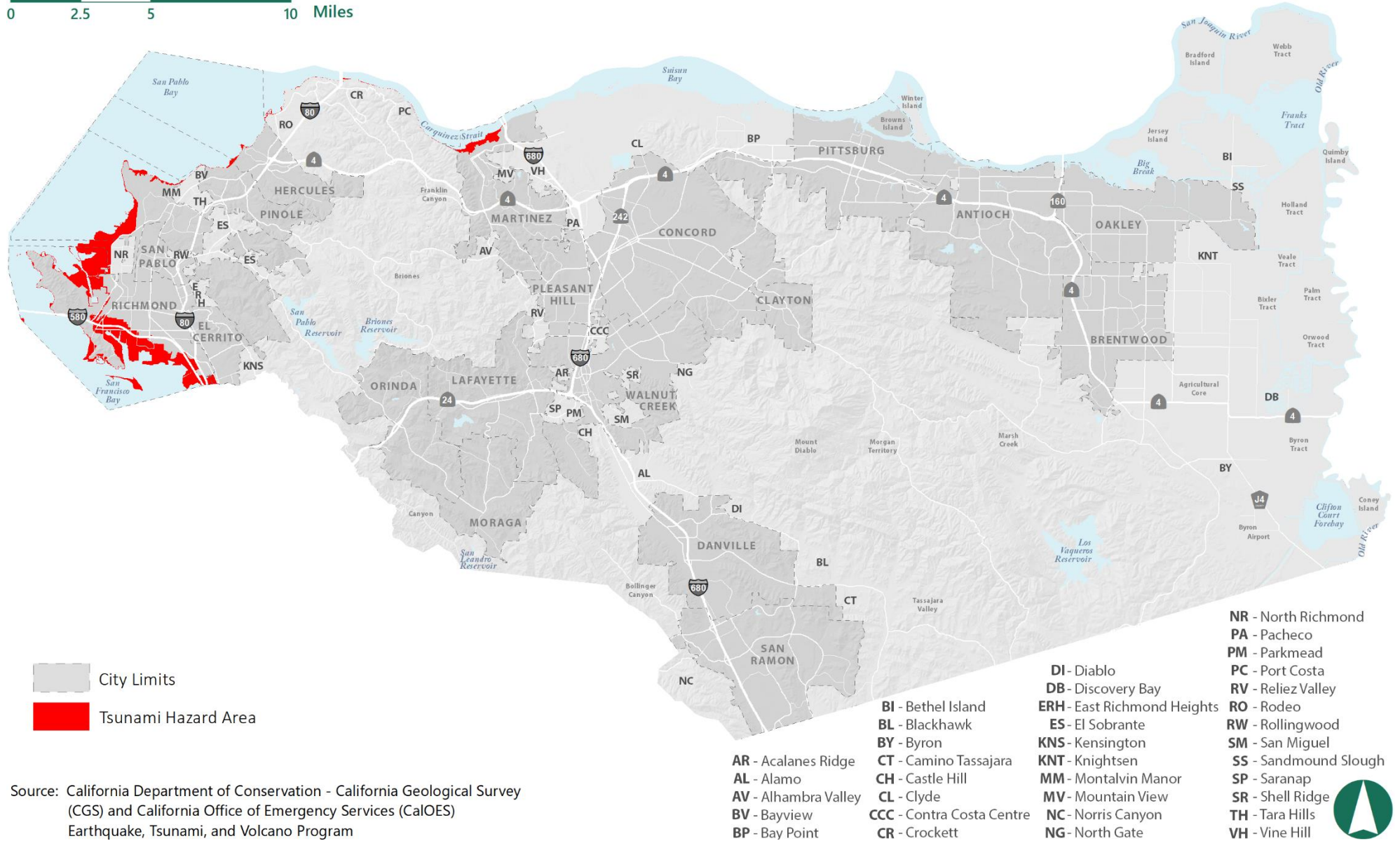
- AR - Acalanes Ridge
- AL - Alamo
- AV - Alhambra Valley
- BV - Bayview
- BP - Bay Point
- BI - Bethel Island
- BL - Blackhawk
- BY - Byron
- CT - Camino Tassajara
- CH - Castle Hill
- CL - Clyde
- CCC - Contra Costa Centre
- CR - Crockett
- DI - Diablo
- DB - Discovery Bay
- ERH - East Richmond Heights
- ES - El Sobrante
- KNS - Kensington
- KNT - Knightsen
- MM - Montalvin Manor
- MV - Mountain View
- NC - Norris Canyon
- NG - North Gate
- NR - North Richmond
- PA - Pacheco
- PM - Parkmead
- PC - Port Costa
- RV - Reliez Valley
- RO - Rodeo
- RW - Rollingwood
- SM - San Miguel
- SS - Sandmound Slough
- SP - Saranap
- SR - Shell Ridge
- TH - Tara Hills
- VH - Vine Hill





FIGURE HS-5 TSUNAMI HAZARD AREAS

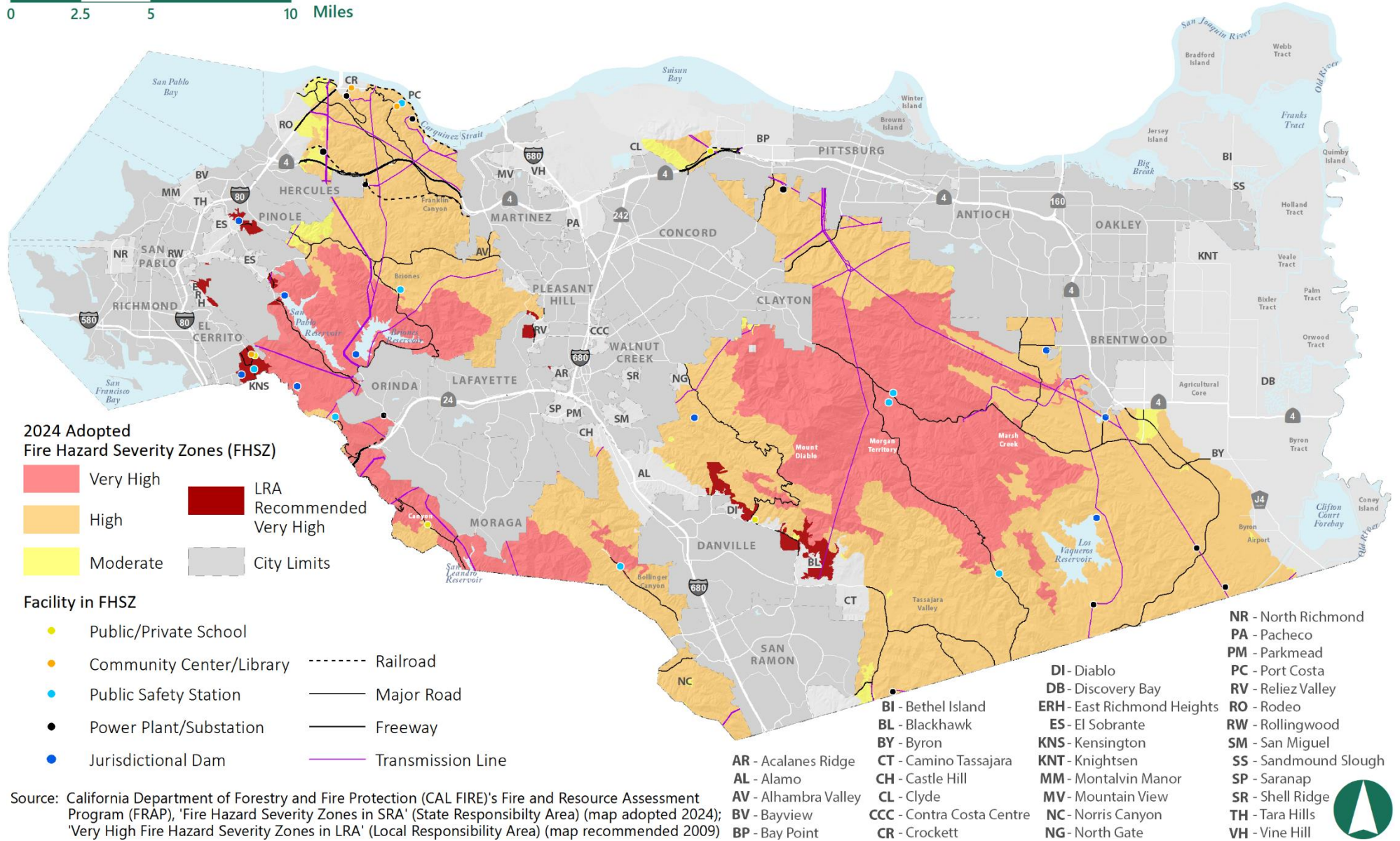
0 2.5 5 10 Miles



Source: California Department of Conservation - California Geological Survey (CGS) and California Office of Emergency Services (CalOES) Earthquake, Tsunami, and Volcano Program

FIGURE HS-10 FIRE HAZARD SEVERITY ZONES

0 2.5 5 10 Miles

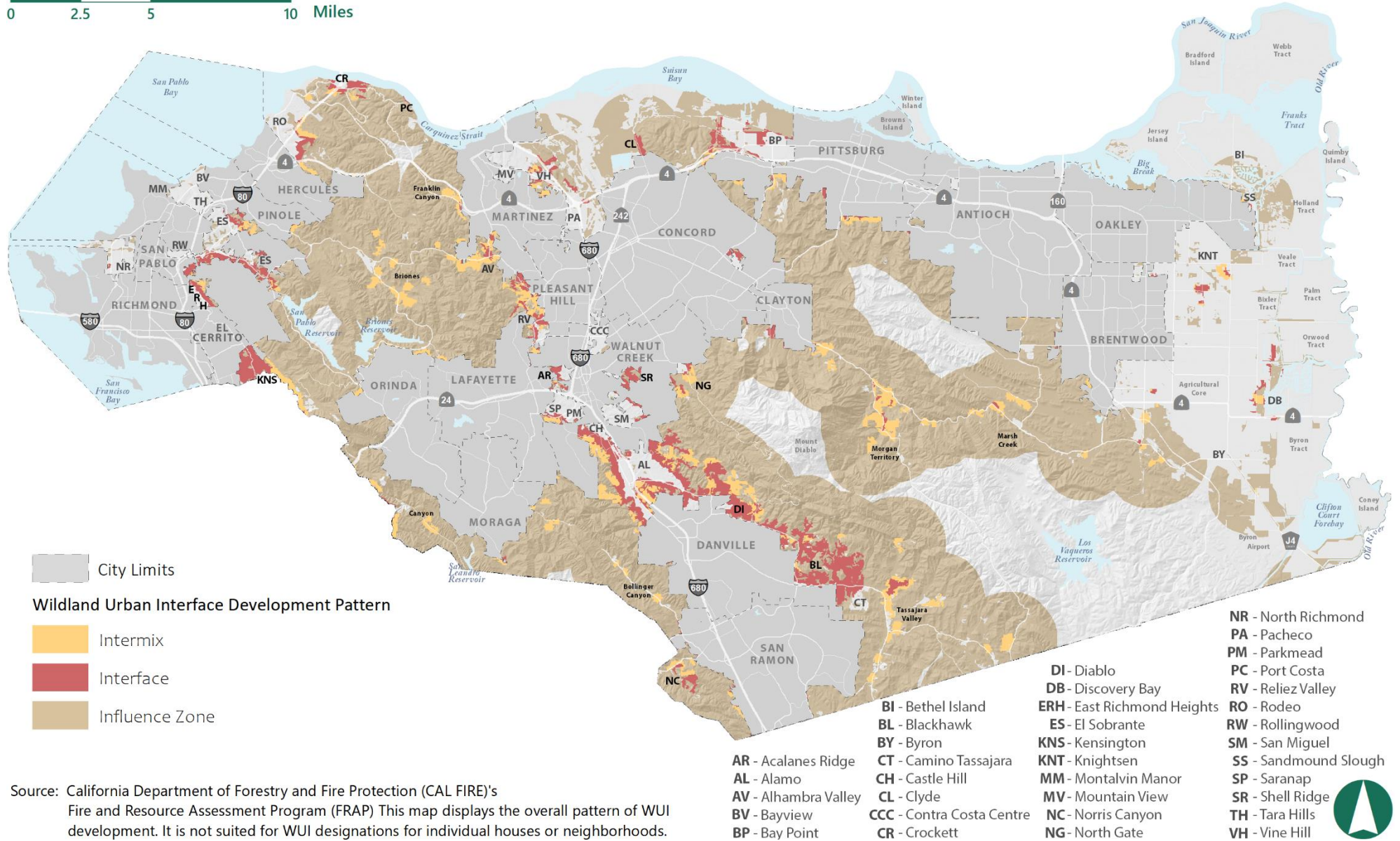


Source: California Department of Forestry and Fire Protection (CAL FIRE)'s Fire and Resource Assessment Program (FRAP), 'Fire Hazard Severity Zones in SRA' (State Responsibility Area) (map adopted 2024); 'Very High Fire Hazard Severity Zones in LRA' (Local Responsibility Area) (map recommended 2009)



FIGURE HS-11 WILDLAND-URBAN INTERFACE DEVELOPMENT PATTERNS

0 2.5 5 10 Miles

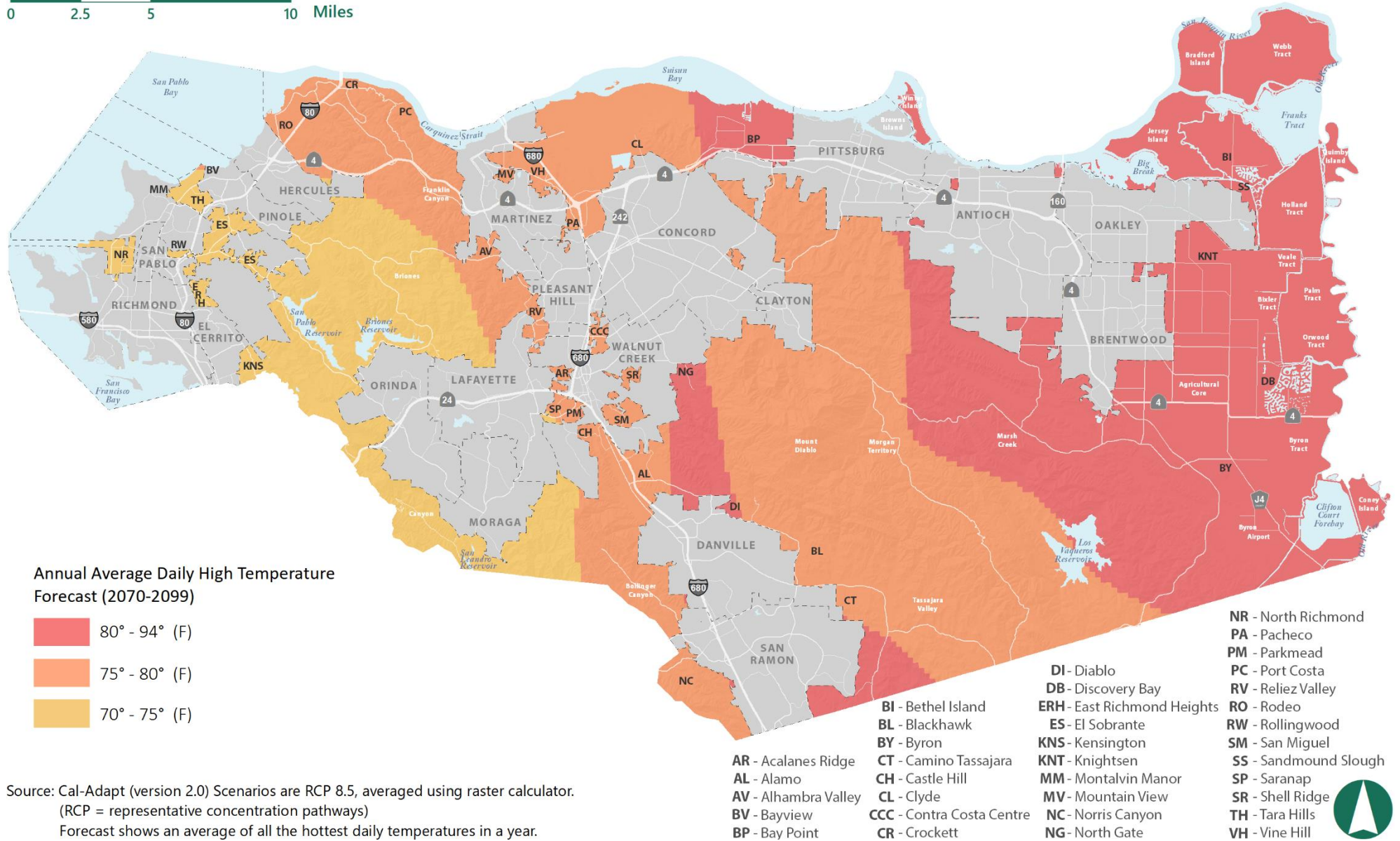


Source: California Department of Forestry and Fire Protection (CAL FIRE)'s Fire and Resource Assessment Program (FRAP) This map displays the overall pattern of WUI development. It is not suited for WUI designations for individual houses or neighborhoods.



FIGURE HS-13 TEMPERATURE FORECAST

0 2.5 5 10 Miles

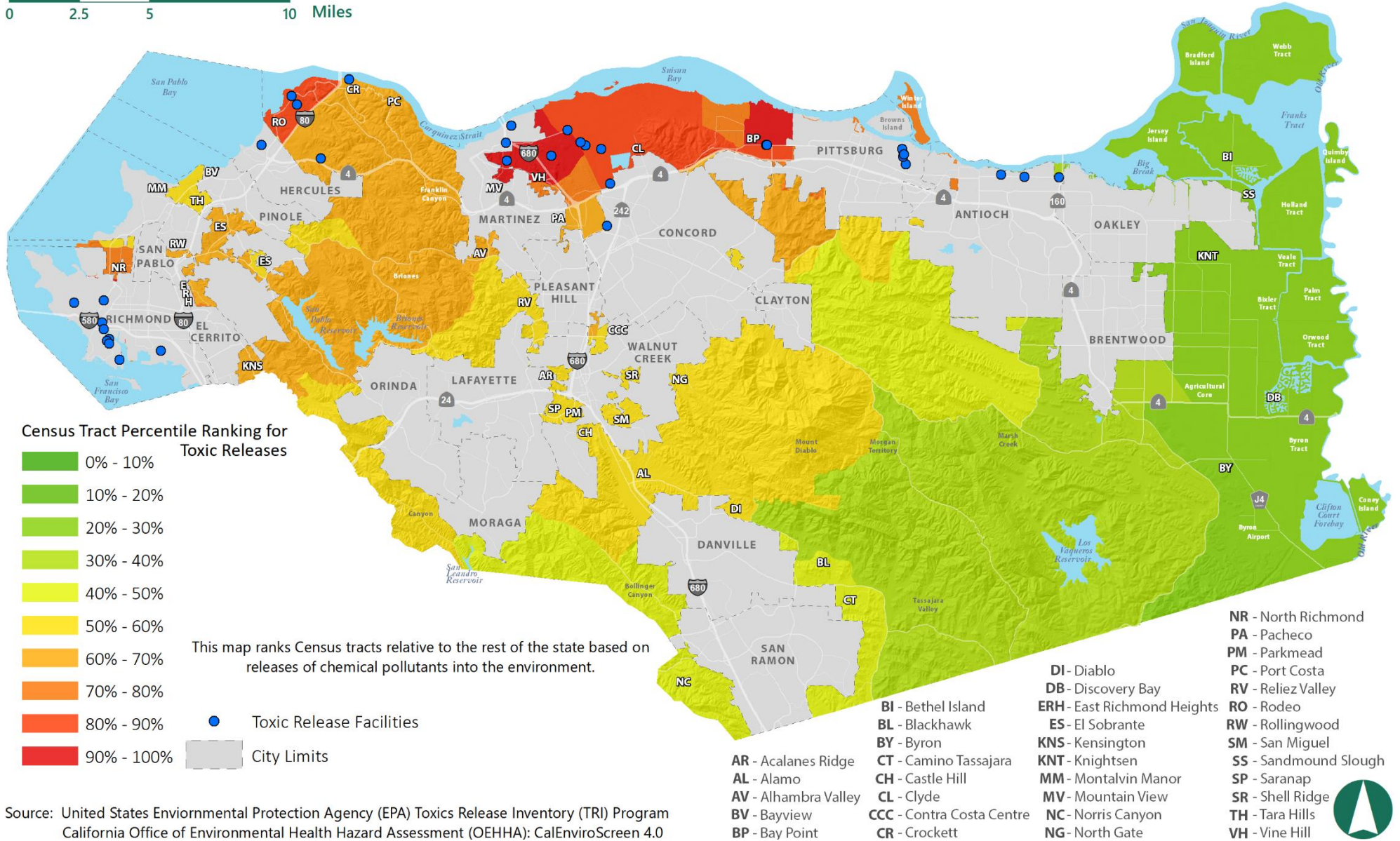


Source: Cal-Adapt (version 2.0) Scenarios are RCP 8.5, averaged using raster calculator. (RCP = representative concentration pathways)
Forecast shows an average of all the hottest daily temperatures in a year.



FIGURE HS-14 TOXIC RELEASES RANKINGS RELATIVE TO THE STATE

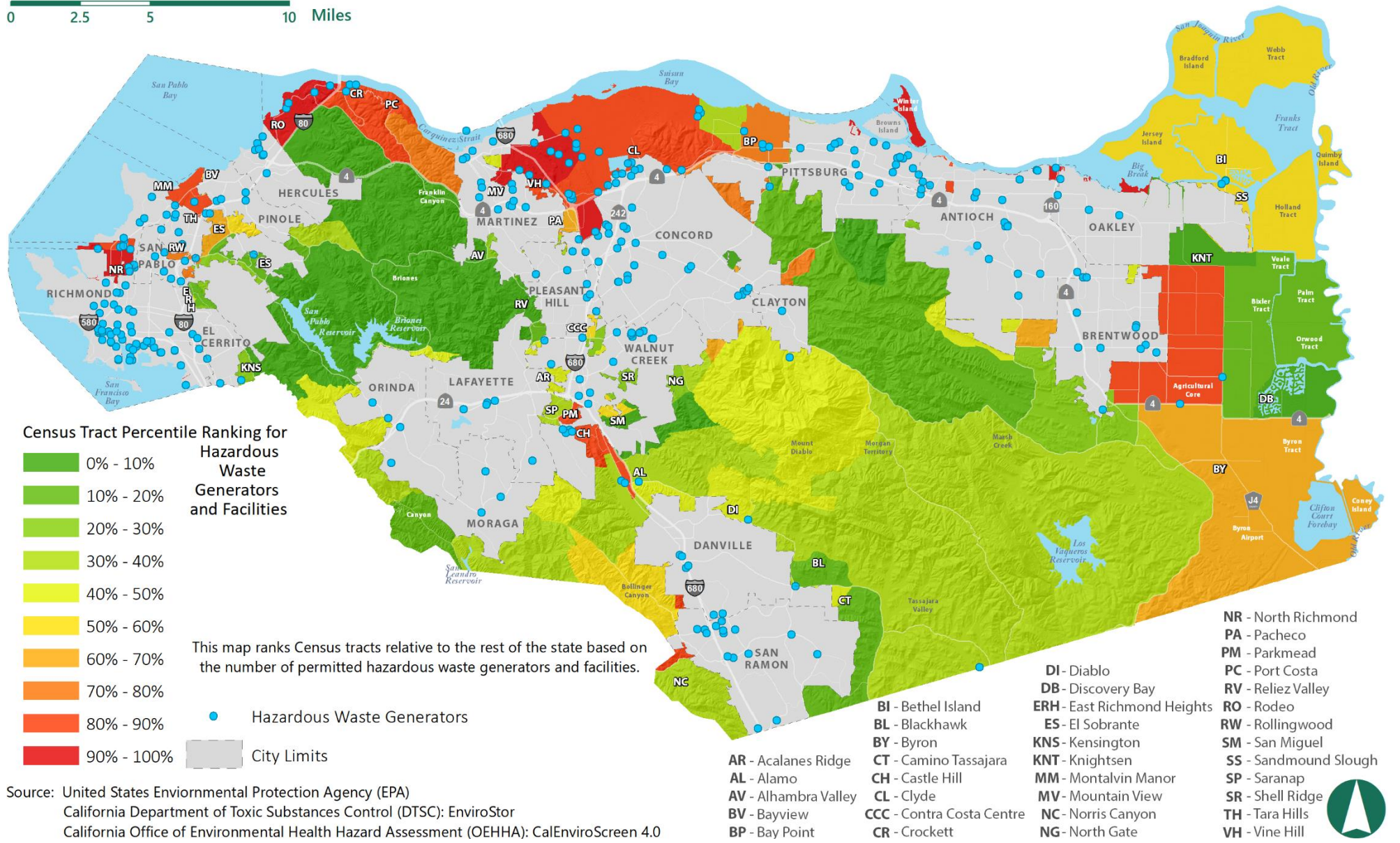
0 2.5 5 10 Miles



Source: United States Environmental Protection Agency (EPA) Toxics Release Inventory (TRI) Program
 California Office of Environmental Health Hazard Assessment (OEHHA): CalEnviroScreen 4.0

FIGURE HS-15 HAZARDOUS WASTE GENERATORS AND FACILITIES RANKINGS RELATIVE TO THE STATE

0 2.5 5 10 Miles

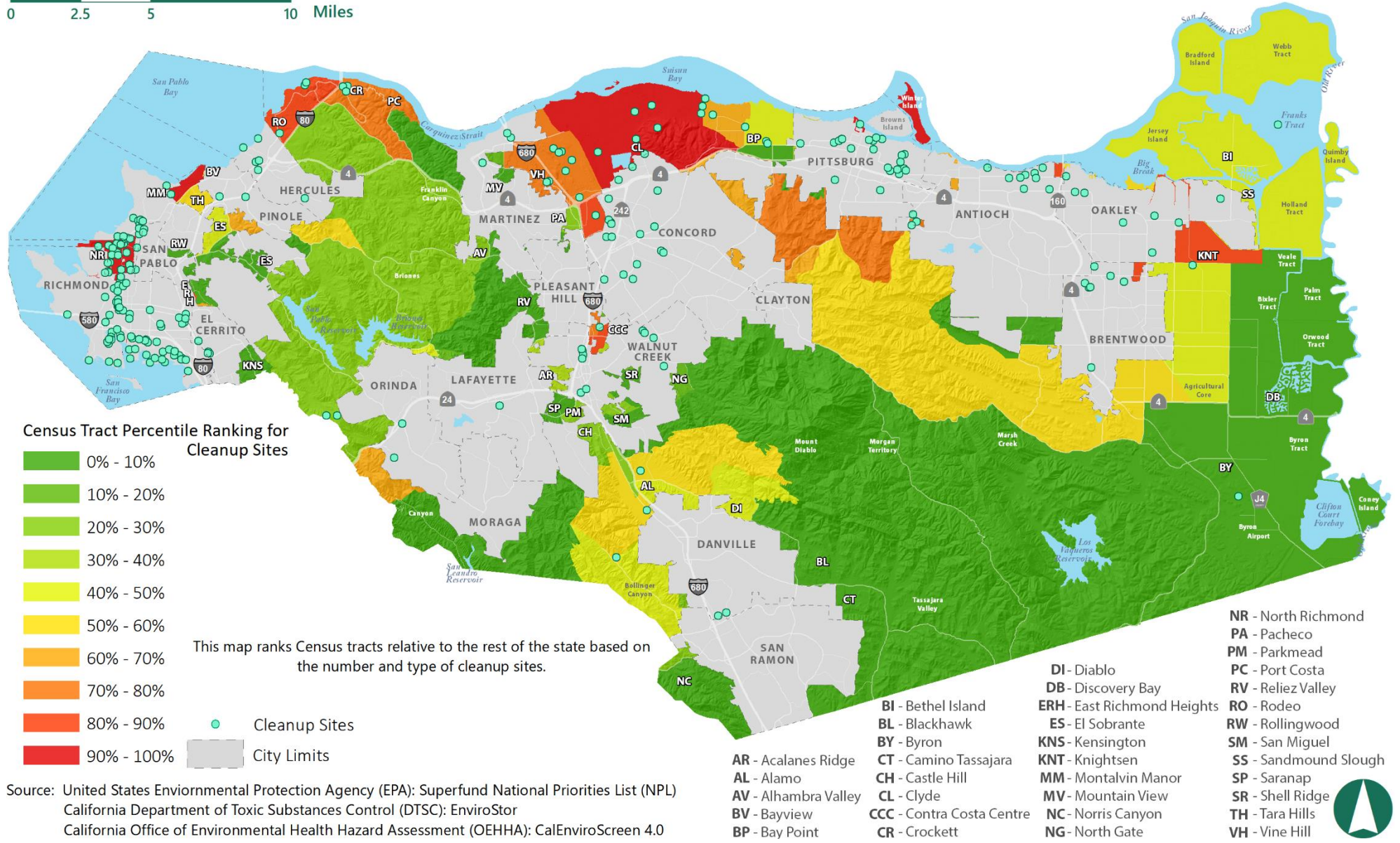


Source: United States Environmental Protection Agency (EPA)
 California Department of Toxic Substances Control (DTSC): EnviroStor
 California Office of Environmental Health Hazard Assessment (OEHHA): CalEnviroScreen 4.0



FIGURE HS-16 CLEAN-UP SITES RANKINGS RELATIVE TO THE STATE

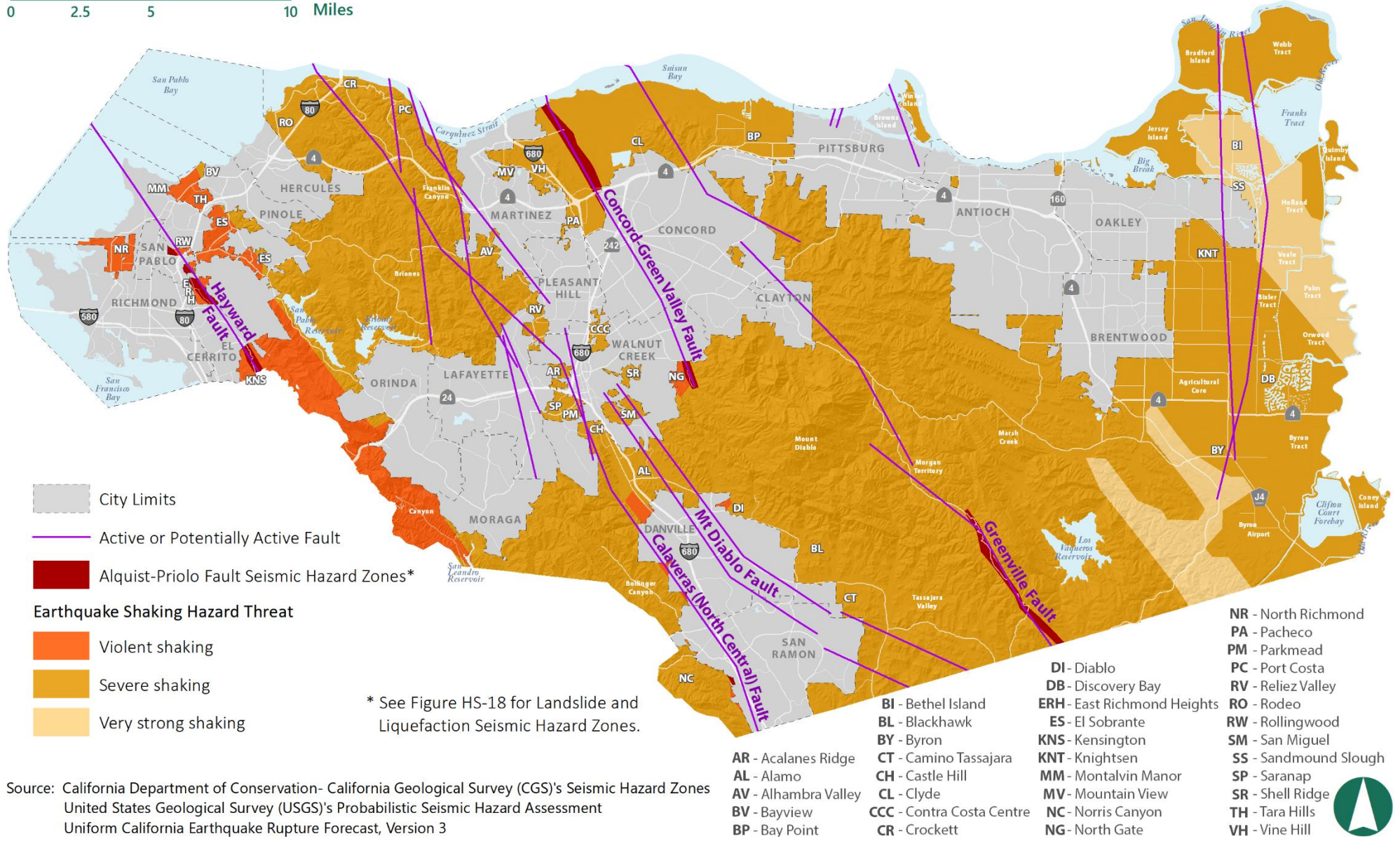
0 2.5 5 10 Miles



Source: United States Environmental Protection Agency (EPA): Superfund National Priorities List (NPL)
 California Department of Toxic Substances Control (DTSC): EnviroStor
 California Office of Environmental Health Hazard Assessment (OEHHA): CalEnviroScreen 4.0

FIGURE HS-17 EARTHQUAKE HAZARDS

0 2.5 5 10 Miles

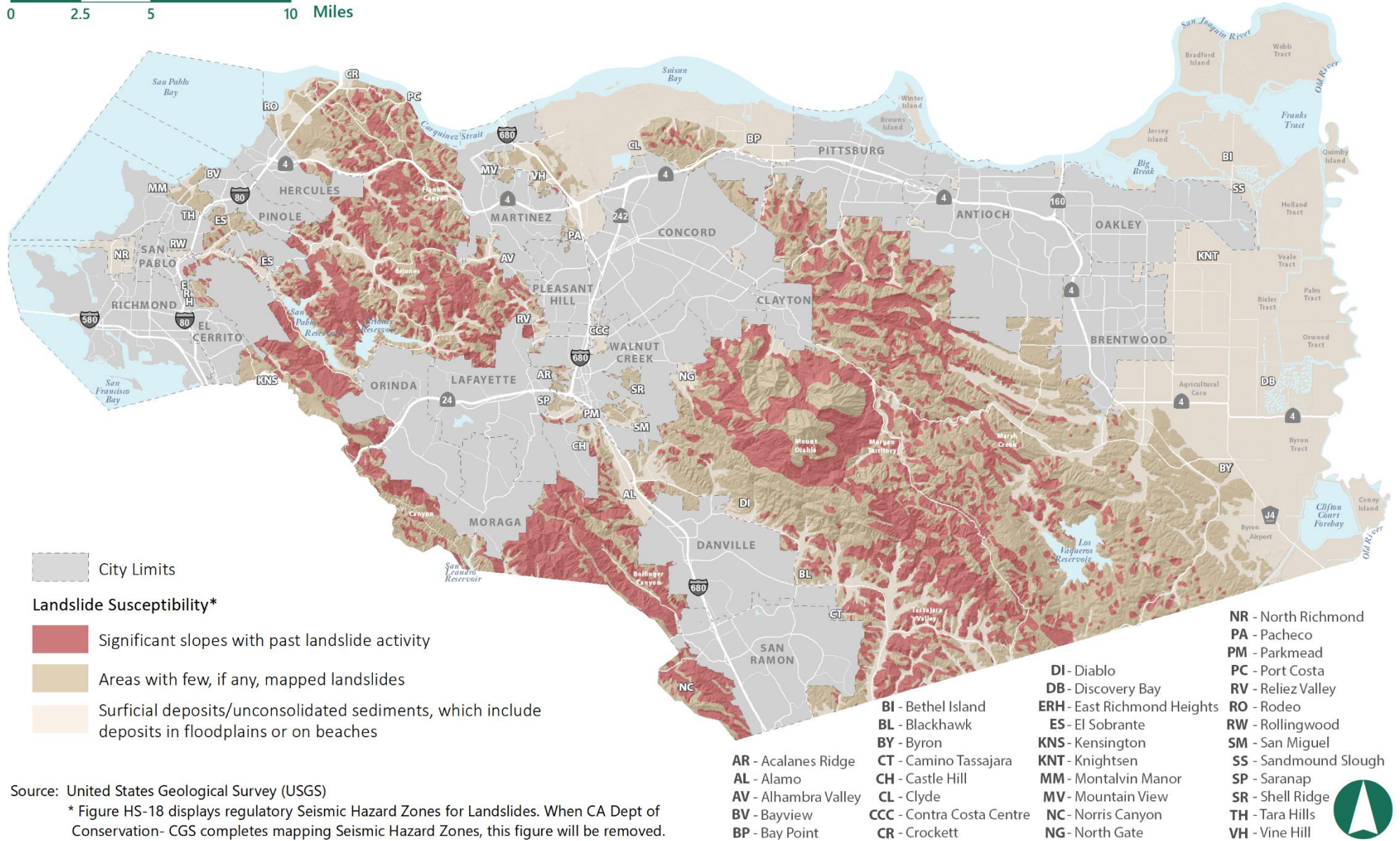


Source: California Department of Conservation- California Geological Survey (CGS)'s Seismic Hazard Zones
 United States Geological Survey (USGS)'s Probabilistic Seismic Hazard Assessment
 Uniform California Earthquake Rupture Forecast, Version 3



FIGURE HS-18B LANDSLIDE HAZARDS

0 2.5 5 10 Miles



Source: United States Geological Survey (USGS)

* Figure HS-18 displays regulatory Seismic Hazard Zones for Landslides. When CA Dept of Conservation- CGS completes mapping Seismic Hazard Zones, this figure will be removed.

FIGURE HS-20 SINGLE-ACCESS ROAD RESIDENTIAL AREAS

0 2.5 5 10 Miles

