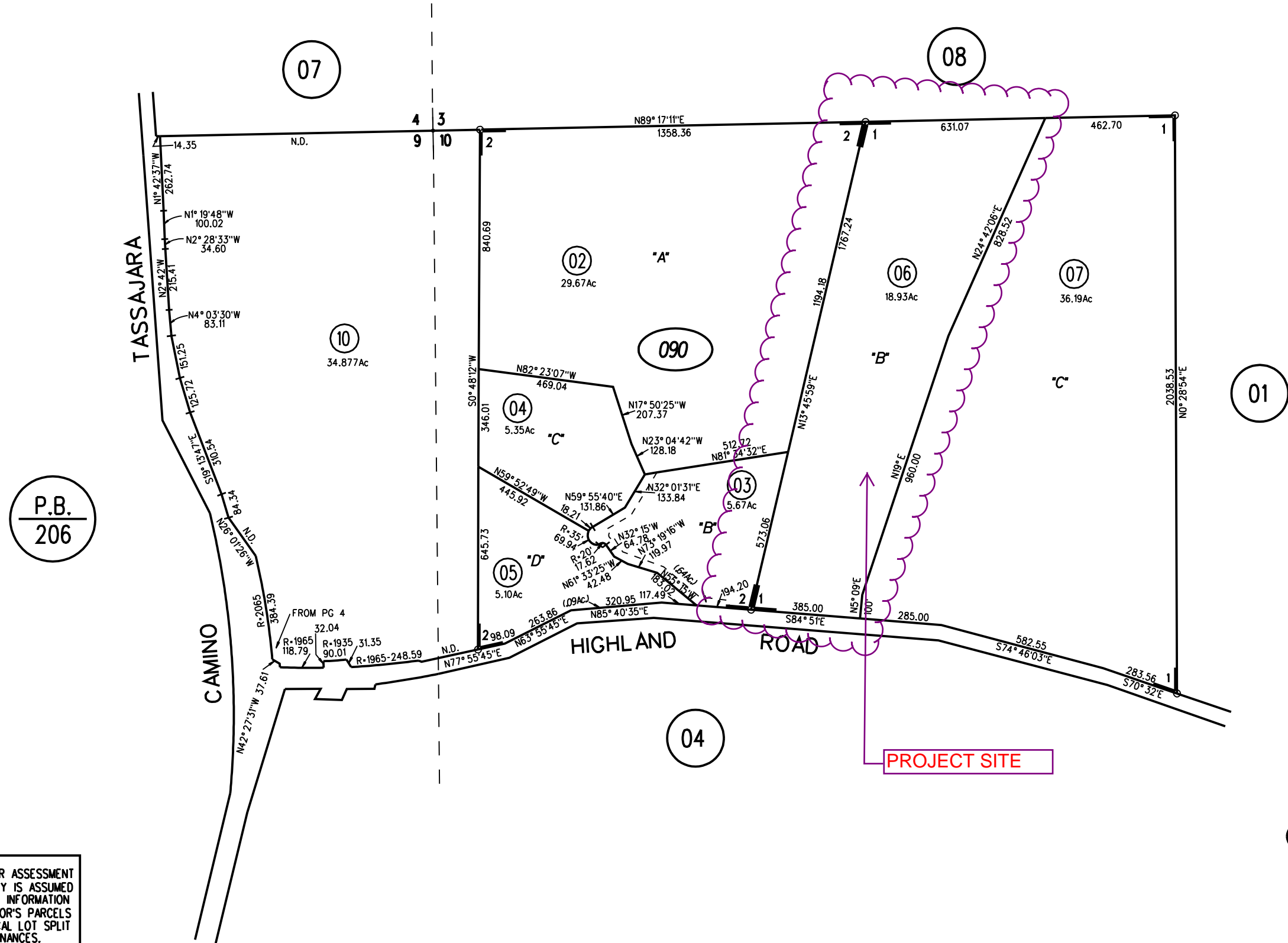
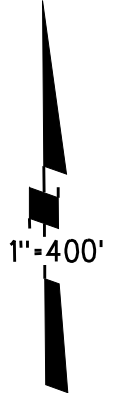


POR SEC's 9 & 10 T2S R1E MDBM

1- 9PM30 7/3/69
2- 65PM26 5/3/78

V-20,21
X-20



P.B.
206

NOTE: THIS MAP WAS PREPARED FOR ASSESSMENT PURPOSES ONLY. NO LIABILITY IS ASSUMED FOR THE ACCURACY OF THE INFORMATION DELINEATED HEREON. ASSESSOR'S PARCELS MAY NOT COMPLY WITH LOCAL LOT SPLIT OR BUILDING SITE ORDINANCES.

090 10
1/15/09



Map Legend

- Assessment
Parcels
- Planning Layers
(DCD)
 - Unincorporated
 - Board of
Supervisors'
Districts

This map is a user generated, static output from an internet mapping application and is intended for reference use only. Data layers that appear on this map may or may not be accurate, current, or otherwise reliable.

THIS MAP IS NOT TO BE USED FOR NAVIGATION.

CCMap is maintained by Contra Costa County Department of Information Technology, County GIS. Data layers contained within the CCMap application are provided by various Contra Costa County Departments. Please direct all data inquiries to the appropriate department.

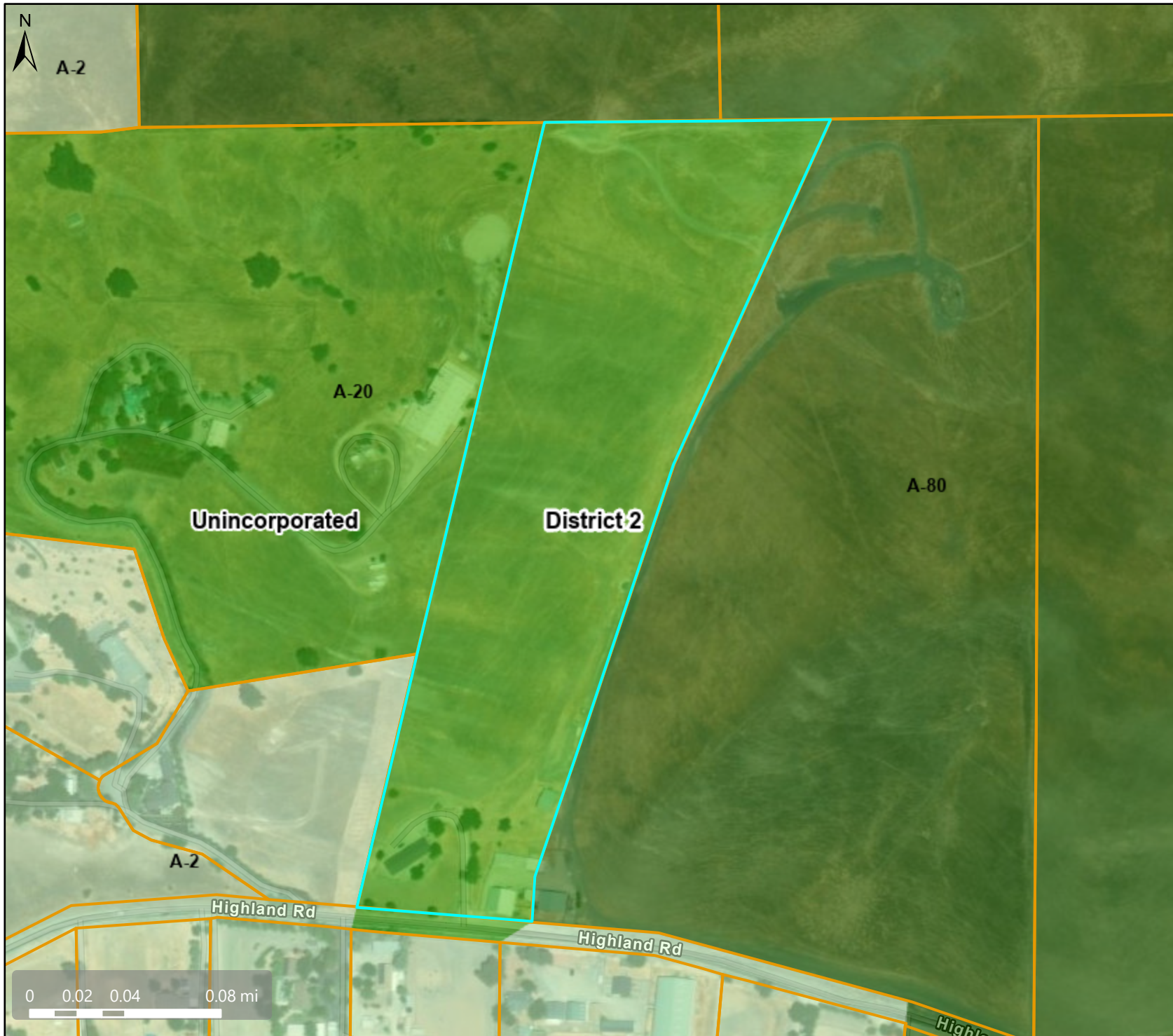
Spatial Reference
PCS: WGS 1984 Web Mercator Auxiliary Sphere
Datum: WGS 1984

An aerial photograph showing a large, irregularly shaped area outlined in cyan, labeled "District 2". To the west of this area is a smaller, more developed area labeled "Unincorporated AL". A road labeled "Highland Rd" runs horizontally across the bottom of the map. A scale bar at the bottom left indicates distances from 0 to 0.08 miles. A north arrow is located in the top left corner. The map is overlaid with a grid of orange lines.

Board of Supervisors' Districts

Spatial Reference
PCS: WGS 1984 Web Mercator Auxiliary Sphere
Datum: WGS 1984

Zoning - A -20



Map Legend

Assessment
Parcels

Planning Layers
(DCD)

Zoning

ZONE_OVER

A-2 (General
Agriculture)

A-20 (Exclusive
Agriculture)

A-80 (Exclusive
Agriculture)

Unincorporated

Board of
Supervisors'
Districts

This map is a user generated, static output from an internet mapping application and is intended for reference use only. Data layers that appear on this map may or may not be accurate, current, or otherwise reliable.
THIS MAP IS NOT TO BE USED FOR NAVIGATION.
CCMap is maintained by Contra Costa County Department of Information Technology, County GIS. Data layers contained within the CCMap application are provided by various Contra Costa County Departments. Please direct all data inquiries to the appropriate department.

Spatial Reference
PCS: WGS 1984 Web Mercator Auxiliary Sphere
Datum: WGS 1984