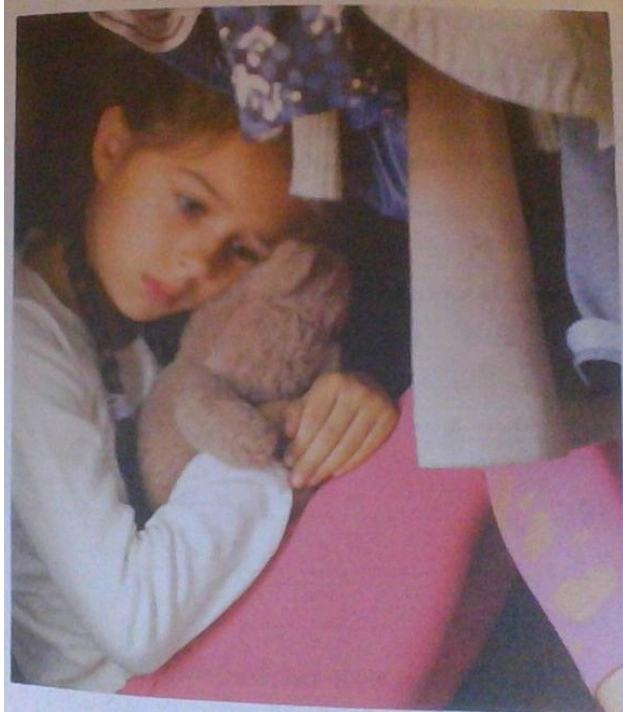


Abused children are:

- 59% more likely to be arrested as juveniles
- 28% more likely to have an adult criminal record
- 77% more likely to require special education
- In Contra Costa County there are approximately **10,000** allegations of child abuse **every year**.



Child abuse impacts the **child, family, community and society**.

Your donation will help support community programs for at-risk children and their families

- Parenting education and life skills for pregnant and parenting teens
- Services for children with special needs and their parents
- Treatment for child abuse victims
- Support services for substance abuse
- Multi-cultural parent education and resilience
- Referrals to community resources for at risk families

“It changed my life...and gave me hope”

— parent in FACT-funded program

Every Donation Helps

- Tax deductible!
- 100% of your contribution goes to prevention services



Donation forms on last page:

- Consider adding QR-codes to pay electronically (e.g. Venmo, Paypal)
 - (Particularly because many people pay taxes electronically, and may not have a checkbook)

- How many people pay in two installments? (If very few, consider eliminating the second form and re-use the space for more compelling info)

- Depending on how people open their tax form envelope, the last page may actually be the first (and perhaps only) page they see. Rather than a donation form, consider putting more compelling info on this page – and put the tax form inside (as the third page).