

RIGHT OF WAY CONTRACT -- STATE HIGHWAY- TEMPORARY EASEMENT

RW 8-4 (Rev. 09/2021)

Grantor(s): Contra Costa County Flood Control and Water Conservation District, a flood control district operating under the laws of the State of California

Portion of APN: N/A

Project Name: I-680/SR4 Interchange Project – Phases 2A and 4

Project No.: 6X4175

Federal Project No.: 04200001561

Parcel No(s): 65049-2, 65053-1 & -2, 65054-1 & -2

District: 04

County: CC

Route: 680/4 Post Mile: 20.2/12.9

_____, California

_____, 202__

This Document in the form of a TEMPORARY CONSTRUCTION EASEMENT (TCE), covering the property particularly described in Clause 3 below has been executed and delivered to Lorena Serrano Right of Way Consultant for Contra Costa County (County).

In consideration of which, and the other considerations hereinafter set forth, it is mutually agreed as follows:

1. The parties have herein set forth the whole of their agreement. The performance of this agreement constitutes the entire consideration for said document and shall relieve the County of all further obligation or claims on this account, or on account of the location, grade or construction of the proposed public improvement.
2. The County shall pay the undersigned Grantor(s) the sum of \$5,750.00 for this TCE.
3. Permission is hereby granted to the County or its authorized agent to enter upon Grantor's land where necessary within that certain area described in Exhibit "A", "B", and "C", attached hereto and made a part hereof, for the purpose of the I-680/SR4 Interchange Project.
4. This TCE shall commence on the date funds are paid to Grantor and terminate on December 31, 2028. Grantor(s) shall have use of the property until the County takes possession.
5. The undersigned Grantor(s) warrant(s) that they are the owner(s) in fee simple of the property affected by this TCE as described in Clause 3 above and that they have the exclusive right to grant this TCE.
6. The parties to this contract shall, pursuant to Section 21.7(a) of Title 49, Code of Federal Regulations, comply with all elements of Title VI of the Civil Rights Act of 1964. This Requirement under Title VI and the Code of Federal Regulations is to complete the County's Non-Discrimination Assurance requiring compliance with Title VI of the Civil Rights Act of 1964, 49 C.F.R. Parts 21 and 28 C.F.R. Section 50.3.
7. Further, no person in the United States shall, on the grounds of race, color, or national origin, be excluded from participation in, be denied the benefits of, or be subjected to

RIGHT OF WAY CONTRACT -- STATE HIGHWAY- TEMPORARY EASEMENT

RW 8-4 (Rev. 09/2021)

discrimination under any program or activity that is subject to this contract.

8. In case of unpredictable delays in construction, upon written notification, the TCE may be extended by an amendment to this Right of Way contract. Grantor(s) shall be compensated based on the fair market value at the time of the extension. Payment shall be made to the grantor for the extension prior to the expiration of the original period.
9. Permission is hereby granted to the County, its contractors and their authorized agents, to enter and bring the necessary workers, tools and equipment on the property of the undersigned where necessary, for the purpose of driveway conforming.
10. It is agreed and confirmed by the parties hereto that notwithstanding other provisions in this contract, the right of possession and use of the subject property by the County, including the right to remove and dispose of improvements, shall commence on the date the amount of funds as specified in Clause 2 herein are paid to the Grantor. The amount shown in Clause 2 herein includes, but is not limited to, full payment for such possession and use, including damages, if any, from said date.

In Witness Whereof, the Parties have executed this agreement the day and year first above written.

CONTRA COSTA COUNTY
Recommended to the Board of Supervisors
for Approval:

GRANTOR

By Lorena Serrano
Lorena Serrano
Real Property Consultant

By _____
Warren Lai
Chief Engineer

By Jessica L. Dillingham
Jessica L. Dillingham
Principal Real Property Agent

APPROVED:

By _____
Warren Lai
Public Works Director

Date _____
(Date of Approval)

G:\realprop\CALTRANS\RW08-04 Right of Way Contract - Temporary Construction Easement.doc
05/12/25

ADA Notice

For individuals with sensory disabilities, this document is available in alternate formats. For alternate format information, contact the Forms Management Unit at (279-234-2284, TTY 711, or write to Records and Forms Management, 1120 N Street, MS-89, Sacramento, CA 95814.

RIGHT OF WAY CONTRACT -- STATE HIGHWAY- TEMPORARY EASEMENT

RW 8-4 (Rev. 09/2021)

EXHIBIT "A"

Number
65049

EXHIBIT "A"

Real property situate in the County of Contra Costa, State of California and being portions of the parcel of land described in the Grant Deeds to Contra Costa County Flood Control and Water Conservation District recorded on April 3, 1962 in Book 4089, Page 264 and in Book 4089, Page 272, all of Official Records of Contra Costa County and more particularly described as follows:

PARCEL 2 (65049-2)

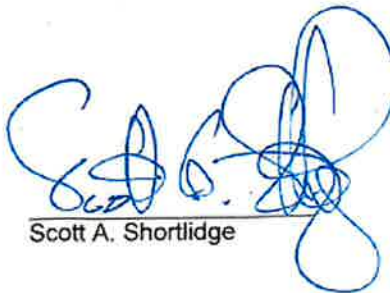
An easement for temporary construction purposes described as follows:

BEGINNING at the most westerly corner of the above **PARCEL 1 (65049-1)**; thence across said parcel (4089 OR 264) South 14°13'45" East 34.03 feet and South 12°03'55" East 347.70 feet to the generally southeasterly line of said parcel (4089 OR 264); thence along last said line South 22°35'24" West 167.07 feet; thence across said parcel (4089 OR 264) North 12°03'55" West 383.28 feet to said generally northwesterly line of said parcel (4089 OR 264); thence along last said line North 22°32'38" East 165.00 feet to the **POINT OF BEGINNING**.

CONTAINING 36,400 square feet, more or less.

The bearings and distances used in the above description are based on the California Coordinate System of 1983 (CCS83) Zone 3, Epoch 2017.50. Multiply distances by 1.000062454 to obtain ground distances.

This real property description has been prepared by me, or under the direction, in conformance with the California Professional Land Surveyors Act.


Scott A. Shortlidge



7-28-2025
Date

EXHIBIT "B"

Number
65053

EXHIBIT "A"

Real property situate in the County of Contra Costa, State of California and being a portion of the "Strips of Land" described in the Grant Deeds to Contra Costa County Flood Control and Water Conservation District (CCCFC&WCD) recorded on April 3, 1962 in Book 4089, Page 264 and in Book 4089, Page 272, all of Official Records of Contra Costa County and more particularly described as follows:

PARCEL 1 (65053-1)

An easement for temporary construction purposes described as follows:

BEGINNING at westerly terminus of the course labeled South 22° 34' 00" West – 479.16 feet described in Parcel 1 conveyed to the State of California in Book 3259 Page 252 of said Official Records; Thence the north line of said Parcel 1, North 22°34'00" East, 426.74 feet; Thence crossing through said CCCFC&WCD strips for the following three (3) courses: (1) South 02°26'49" East, 241.19 feet, (2) South 16°35'48" West, 147.62 feet; and (3) South 22°34'00" West, 155.03 feet to the point of intersection with the east line of Parcel 3 as described in the Grant Deed to the State of California per Book 13586, Page 715 (series no. 1987-083476) of said Official Records; Thence along said Parcel 3 for the following three courses: (1) North 10° 59' 32" West, 21.89 feet, (2) South 79°00'28" West, 15.00 feet, and (3) South 10°59'32" East, 34.96 feet; Thence continuing across said CCCFC&WCD strips, South 22°32'38" West, 57.73 feet to the west line of said Parcel 1; Thence along said west line for the following two courses: (1) North 05°56'21" West, 10.16 feet, and (2) North 10°59'32" West, 194.20 feet to the **POINT OF BEGINNING**.

CONTAINING 44,043 square feet, more or less.

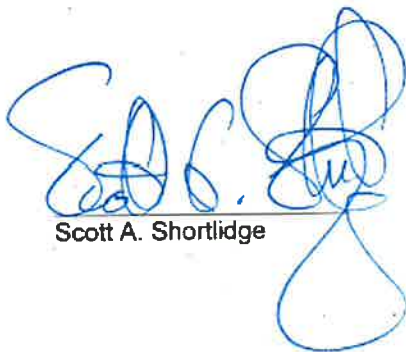
EXHIBIT "B"

Number
65053

EXHIBIT "A"

The bearings and distances used in the above description are based on the California Coordinate System of 1983 (CCS83) Zone 3, Epoch 2017.50. Multiply distances by 1.000062454 to obtain ground distances.

This real property description has been prepared by me, or under the direction, in conformance with the California Professional Land Surveyors Act.


Scott A. Shortlidge



7-28-2025
Date

RIGHT OF WAY CONTRACT -- STATE HIGHWAY- TEMPORARY EASEMENT

RW 8-4 (Rev. 09/2021)

EXHIBIT "B"

Number
65053

EXHIBIT "A"

Real property situate in the County of Contra Costa, State of California and being a portion of the "Strips of Land" described in the Grant Deeds to Contra Costa County Flood Control and Water Conservation District (CCCFC&WCD) recorded on April 3, 1962 in Book 4089, Page 264 and in Book 4089, Page 272, all of Official Records of Contra Costa County and more particularly described as follows:

PARCEL 2 (65053-2)

An easement for temporary construction purposes described as follows:

Commencing at the common west corner of Parcels A and B created by that certain Parcel Map recorded in Book 23 of parcel maps at page 43 of said official records, same corner being on the east line of the abovementioned CCCFC&WCD parcel; Thence along the said east line, North 18° 42' 13" East – 33.41 feet for the Point of Beginning hereof; Thence across said CCCFC&WCD parcel, South 62°51'34" West, 161.32 feet to the west line of said parcel; Thence along the west and north lines for the following three (3) courses: (1) North 18°42'13" East, 142.28 feet, (2) North 62°39'55" East, 103.71 feet, and (3) South 71°17'47" East, 40.39 feet to a point on said east line; Thence along said east line, South 18°42'13" West, 101.18 feet to the **Point of Beginning**.

Containing a land area of 15,188 square feet, more or less.

The bearings and distances used in the above description are based on the California Coordinate System of 1983 (CCS83) Zone 3, Epoch 2017.50. Multiply distances by 1.000062454 to obtain ground distances.

This real property description has been prepared by me, or under the direction, in conformance with the California Professional Land Surveyors Act.

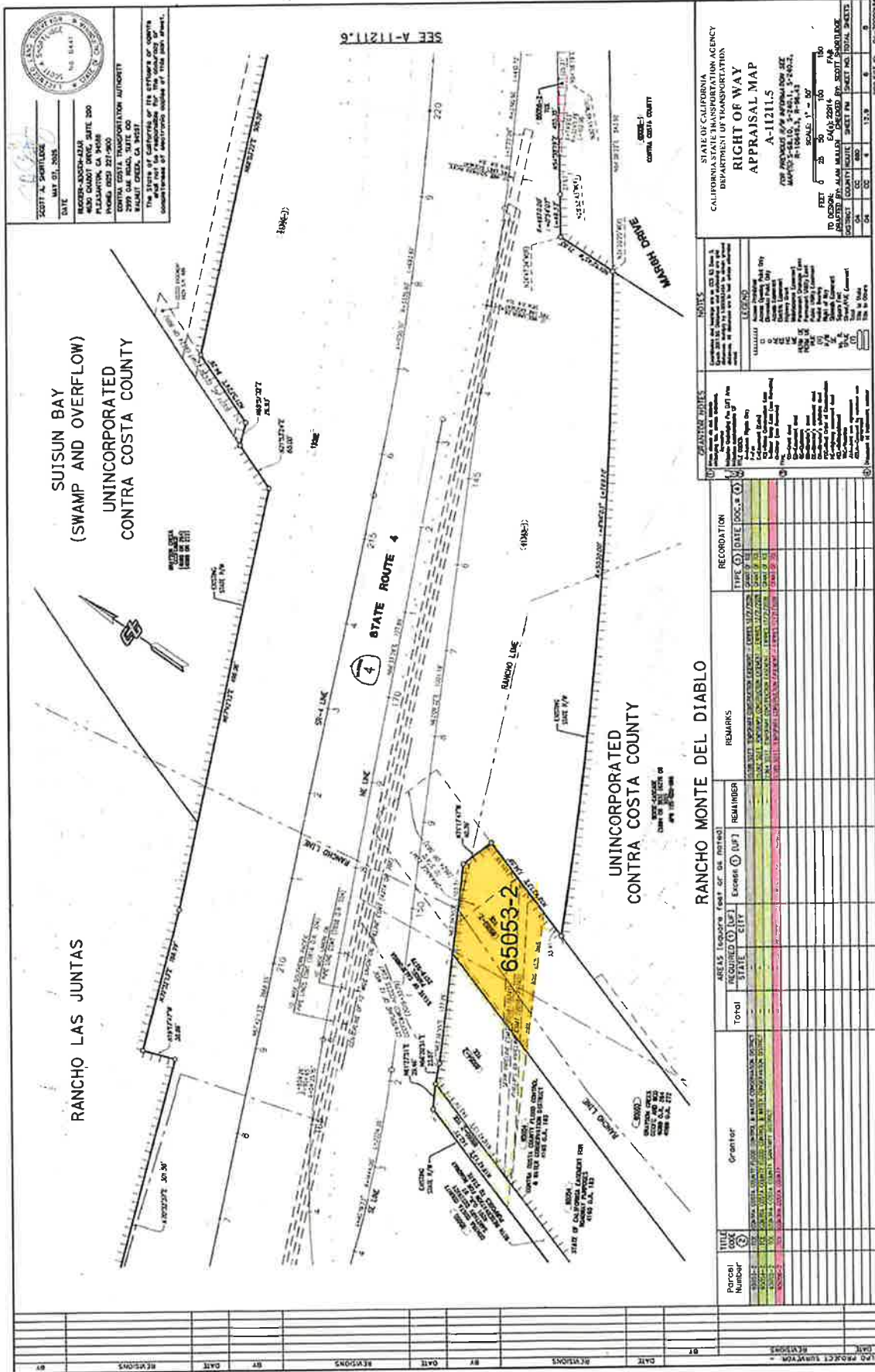

Scott A. Shortlidge



7-28-25
Date

Exhibit "B"

Exhibit "B"



SCOTT S. SORBIDGE
 DATE: MAY 01, 2008
 LICENSE NUMBER: 4418
 4800 QUADRI DRIVE, SUITE 300
 PLEASANTON, CA 94588
 PHONE: 925-271-9600
 CENTRAL DISTRICT REGISTRATION AUTHORITY
 1500 CALIFORNIA STREET, SUITE 100
 SACRAMENTO, CALIFORNIA 95833
 The State of California, by its officers or agents
 authorized to execute public duties, has caused this map to be
 prepared in accordance with the provisions of Title 26, Section 26000.

STATE OF CALIFORNIA
 CALIFORNIA STATE TRANSPORTATION AGENCY
 DEPARTMENT OF TRANSPORTATION
**RIGHT OF WAY
 APPRAISAL MAP**
 A-11211.5
 FOR PROJECT # 04-1000056
 MAP(S) 5-181.0, 5-181.1, 5-181.2
 SHEET 5 OF 9
 SCALE: 1" = 50'
 TO ORDER: CAG-22914
 PREPARED BY: ALAN MALLEN, CHECKED BY: SCOTT SORBIDGE
 PROJECT NO: 04-1000056 SHEET NO: 5 OF 9
 DATE: 05/01/08

LEGEND

BOUNDARIES

- State Boundary
- County Boundary
- City Boundary
- Unincorporated Area Boundary
- Water Boundary
- Right of Way Boundary
- Other Boundary

UTILITIES

- High Voltage Power Line
- Medium Voltage Power Line
- Low Voltage Power Line
- Gas Line
- Water Line
- Sewer Line
- Other Utility

LAND USE

- Highway Right of Way
- Other Right of Way
- Other Land Use

RECORDATION

TYPE	DATE	ISSUE	REMARKS
Right of Way	05/01/08	05/01/08	Right of Way

AREAS (Acres) (Less or Gr. Total)

Area	State	City	Other	Total
Right of Way	1.2	0.0	0.0	1.2
Other	0.0	0.0	0.0	0.0
Total	1.2	0.0	0.0	1.2

REVISIONS

NO.	DATE	REVISIONS
1	05/01/08	Initial Issue

PROJECT NUMBER: 04-1000056
 SHEET NO: 5 OF 9

RIGHT OF WAY CONTRACT -- STATE HIGHWAY- TEMPORARY EASEMENT

RW 8-4 (Rev. 09/2021)

EXHIBIT "C"

Number
65054

EXHIBIT "A"

Real property situate in the County of Contra Costa, State of California and being portions of the parcel of land described in the Director's Deed to Contra Costa County Flood Control & Water Conservation District (CCCFC&WCD) recorded on July 23, 1962 in Liber 4165, Page 183, Official Records of Contra Costa County and more particularly described as follows:

PARCEL 1 (65054-1)

An easement for temporary construction purposes described as follows:

BEGINNING at the most westerly corner of said parcel; Thence along the north line of said parcel for the following four (4) courses:

- 1) North 22°34'00" East, 66.99 feet;
- 2) North 83°10'27" East, 34.43 feet;
- 3) North 22°34'00" East, 208.43 feet;
- 4) North 18°42'13" East, 209.02 feet;

Thence across said parcel South 02°26'49" East, 284.00 feet to the south line of said parcel;

Thence along said south line South 22°34'00" West, 426.74 feet to the southwest corner of said parcel;

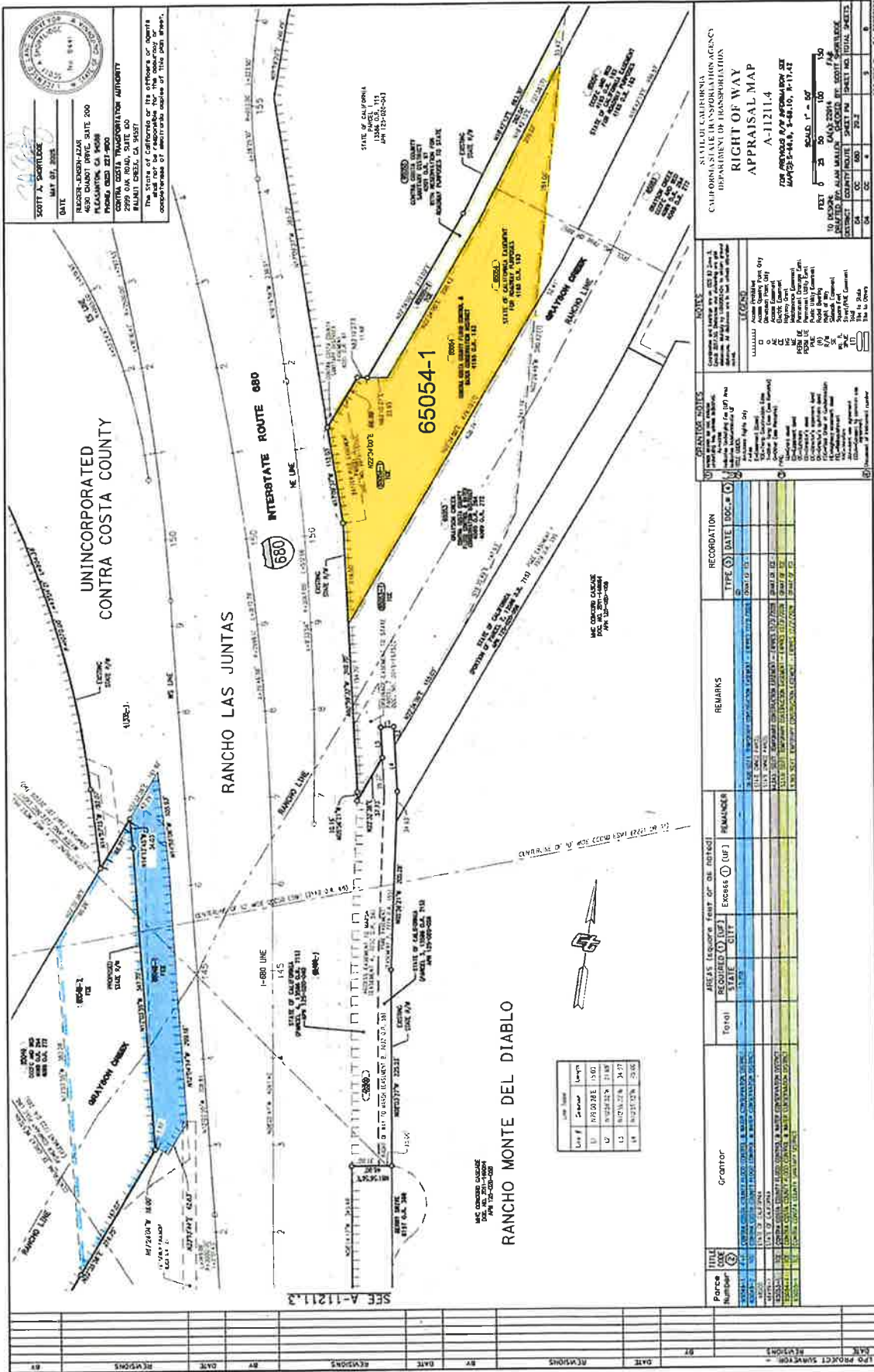
Thence along the west line of said parcel for the following two (2) courses:

- 1) North 10°59'32" West, 116.50 feet;
- 2) North 17°09'37" West, 112.03 feet to the **POINT OF BEGINNING**.

CONTAINING 53,131 square feet, more or less.

Exhibit "C"

Exhibit "B"



SCOTT A. SHREVE
DATE: MAY 01, 2008

BLUESKY ENGINEERING
4650 CHABOT DRIVE, SUITE 200
PLEASANTON, CA 94588
PHONE: (925) 271-8000
FAX: (925) 271-8000

CONTRA COSTA COUNTY REGISTERED PROFESSIONAL ENGINEER
No. 10000
RANCHO, CALIF. EXPIRES: 01/01/2010

The State of California, by its officers or agents authorized in this regard, has caused this map to be prepared and recorded in accordance with the provisions of the Public Land Act of 1906.

STATE OF CALIFORNIA
COUNTY OF CONTRA COSTA
DEPARTMENT OF TRANSPORTATION

RIGHT OF WAY
APPRAISAL MAP
A-11211.4
FOR APPROVAL BY APPROVAL DATE
MAP 23-2-24.8, 5-48.10, 8-11.47

SCALE: 1" = 60'

PROJECT NO: 04-2000028

RECORDATION

TYPE	DATE	DOC. #
MC CONDUIT CHANGE	05/01/08	008
MC CONDUIT CHANGE	05/01/08	009
MC CONDUIT CHANGE	05/01/08	010
MC CONDUIT CHANGE	05/01/08	011
MC CONDUIT CHANGE	05/01/08	012
MC CONDUIT CHANGE	05/01/08	013
MC CONDUIT CHANGE	05/01/08	014
MC CONDUIT CHANGE	05/01/08	015
MC CONDUIT CHANGE	05/01/08	016
MC CONDUIT CHANGE	05/01/08	017
MC CONDUIT CHANGE	05/01/08	018
MC CONDUIT CHANGE	05/01/08	019
MC CONDUIT CHANGE	05/01/08	020
MC CONDUIT CHANGE	05/01/08	021
MC CONDUIT CHANGE	05/01/08	022
MC CONDUIT CHANGE	05/01/08	023
MC CONDUIT CHANGE	05/01/08	024
MC CONDUIT CHANGE	05/01/08	025
MC CONDUIT CHANGE	05/01/08	026
MC CONDUIT CHANGE	05/01/08	027
MC CONDUIT CHANGE	05/01/08	028
MC CONDUIT CHANGE	05/01/08	029
MC CONDUIT CHANGE	05/01/08	030
MC CONDUIT CHANGE	05/01/08	031
MC CONDUIT CHANGE	05/01/08	032
MC CONDUIT CHANGE	05/01/08	033
MC CONDUIT CHANGE	05/01/08	034
MC CONDUIT CHANGE	05/01/08	035
MC CONDUIT CHANGE	05/01/08	036
MC CONDUIT CHANGE	05/01/08	037
MC CONDUIT CHANGE	05/01/08	038
MC CONDUIT CHANGE	05/01/08	039
MC CONDUIT CHANGE	05/01/08	040
MC CONDUIT CHANGE	05/01/08	041
MC CONDUIT CHANGE	05/01/08	042
MC CONDUIT CHANGE	05/01/08	043
MC CONDUIT CHANGE	05/01/08	044
MC CONDUIT CHANGE	05/01/08	045
MC CONDUIT CHANGE	05/01/08	046
MC CONDUIT CHANGE	05/01/08	047
MC CONDUIT CHANGE	05/01/08	048
MC CONDUIT CHANGE	05/01/08	049
MC CONDUIT CHANGE	05/01/08	050
MC CONDUIT CHANGE	05/01/08	051
MC CONDUIT CHANGE	05/01/08	052
MC CONDUIT CHANGE	05/01/08	053
MC CONDUIT CHANGE	05/01/08	054
MC CONDUIT CHANGE	05/01/08	055
MC CONDUIT CHANGE	05/01/08	056
MC CONDUIT CHANGE	05/01/08	057
MC CONDUIT CHANGE	05/01/08	058
MC CONDUIT CHANGE	05/01/08	059
MC CONDUIT CHANGE	05/01/08	060
MC CONDUIT CHANGE	05/01/08	061
MC CONDUIT CHANGE	05/01/08	062
MC CONDUIT CHANGE	05/01/08	063
MC CONDUIT CHANGE	05/01/08	064
MC CONDUIT CHANGE	05/01/08	065
MC CONDUIT CHANGE	05/01/08	066
MC CONDUIT CHANGE	05/01/08	067
MC CONDUIT CHANGE	05/01/08	068
MC CONDUIT CHANGE	05/01/08	069
MC CONDUIT CHANGE	05/01/08	070
MC CONDUIT CHANGE	05/01/08	071
MC CONDUIT CHANGE	05/01/08	072
MC CONDUIT CHANGE	05/01/08	073
MC CONDUIT CHANGE	05/01/08	074
MC CONDUIT CHANGE	05/01/08	075
MC CONDUIT CHANGE	05/01/08	076
MC CONDUIT CHANGE	05/01/08	077
MC CONDUIT CHANGE	05/01/08	078
MC CONDUIT CHANGE	05/01/08	079
MC CONDUIT CHANGE	05/01/08	080
MC CONDUIT CHANGE	05/01/08	081
MC CONDUIT CHANGE	05/01/08	082
MC CONDUIT CHANGE	05/01/08	083
MC CONDUIT CHANGE	05/01/08	084
MC CONDUIT CHANGE	05/01/08	085
MC CONDUIT CHANGE	05/01/08	086
MC CONDUIT CHANGE	05/01/08	087
MC CONDUIT CHANGE	05/01/08	088
MC CONDUIT CHANGE	05/01/08	089
MC CONDUIT CHANGE	05/01/08	090
MC CONDUIT CHANGE	05/01/08	091
MC CONDUIT CHANGE	05/01/08	092
MC CONDUIT CHANGE	05/01/08	093
MC CONDUIT CHANGE	05/01/08	094
MC CONDUIT CHANGE	05/01/08	095
MC CONDUIT CHANGE	05/01/08	096
MC CONDUIT CHANGE	05/01/08	097
MC CONDUIT CHANGE	05/01/08	098
MC CONDUIT CHANGE	05/01/08	099
MC CONDUIT CHANGE	05/01/08	100

REMARKS

REMARKS
MC CONDUIT CHANGE FROM 12" TO 18" DIA.
MC CONDUIT CHANGE FROM 18" TO 24" DIA.
MC CONDUIT CHANGE FROM 24" TO 30" DIA.
MC CONDUIT CHANGE FROM 30" TO 36" DIA.
MC CONDUIT CHANGE FROM 36" TO 42" DIA.
MC CONDUIT CHANGE FROM 42" TO 48" DIA.
MC CONDUIT CHANGE FROM 48" TO 54" DIA.
MC CONDUIT CHANGE FROM 54" TO 60" DIA.
MC CONDUIT CHANGE FROM 60" TO 66" DIA.
MC CONDUIT CHANGE FROM 66" TO 72" DIA.
MC CONDUIT CHANGE FROM 72" TO 78" DIA.
MC CONDUIT CHANGE FROM 78" TO 84" DIA.
MC CONDUIT CHANGE FROM 84" TO 90" DIA.
MC CONDUIT CHANGE FROM 90" TO 96" DIA.
MC CONDUIT CHANGE FROM 96" TO 102" DIA.
MC CONDUIT CHANGE FROM 102" TO 108" DIA.
MC CONDUIT CHANGE FROM 108" TO 114" DIA.
MC CONDUIT CHANGE FROM 114" TO 120" DIA.
MC CONDUIT CHANGE FROM 120" TO 126" DIA.
MC CONDUIT CHANGE FROM 126" TO 132" DIA.
MC CONDUIT CHANGE FROM 132" TO 138" DIA.
MC CONDUIT CHANGE FROM 138" TO 144" DIA.
MC CONDUIT CHANGE FROM 144" TO 150" DIA.
MC CONDUIT CHANGE FROM 150" TO 156" DIA.
MC CONDUIT CHANGE FROM 156" TO 162" DIA.
MC CONDUIT CHANGE FROM 162" TO 168" DIA.
MC CONDUIT CHANGE FROM 168" TO 174" DIA.
MC CONDUIT CHANGE FROM 174" TO 180" DIA.
MC CONDUIT CHANGE FROM 180" TO 186" DIA.
MC CONDUIT CHANGE FROM 186" TO 192" DIA.
MC CONDUIT CHANGE FROM 192" TO 198" DIA.
MC CONDUIT CHANGE FROM 198" TO 204" DIA.
MC CONDUIT CHANGE FROM 204" TO 210" DIA.
MC CONDUIT CHANGE FROM 210" TO 216" DIA.
MC CONDUIT CHANGE FROM 216" TO 222" DIA.
MC CONDUIT CHANGE FROM 222" TO 228" DIA.
MC CONDUIT CHANGE FROM 228" TO 234" DIA.
MC CONDUIT CHANGE FROM 234" TO 240" DIA.
MC CONDUIT CHANGE FROM 240" TO 246" DIA.
MC CONDUIT CHANGE FROM 246" TO 252" DIA.
MC CONDUIT CHANGE FROM 252" TO 258" DIA.
MC CONDUIT CHANGE FROM 258" TO 264" DIA.
MC CONDUIT CHANGE FROM 264" TO 270" DIA.
MC CONDUIT CHANGE FROM 270" TO 276" DIA.
MC CONDUIT CHANGE FROM 276" TO 282" DIA.
MC CONDUIT CHANGE FROM 282" TO 288" DIA.
MC CONDUIT CHANGE FROM 288" TO 294" DIA.
MC CONDUIT CHANGE FROM 294" TO 300" DIA.
MC CONDUIT CHANGE FROM 300" TO 306" DIA.
MC CONDUIT CHANGE FROM 306" TO 312" DIA.
MC CONDUIT CHANGE FROM 312" TO 318" DIA.
MC CONDUIT CHANGE FROM 318" TO 324" DIA.
MC CONDUIT CHANGE FROM 324" TO 330" DIA.
MC CONDUIT CHANGE FROM 330" TO 336" DIA.
MC CONDUIT CHANGE FROM 336" TO 342" DIA.
MC CONDUIT CHANGE FROM 342" TO 348" DIA.
MC CONDUIT CHANGE FROM 348" TO 354" DIA.
MC CONDUIT CHANGE FROM 354" TO 360" DIA.
MC CONDUIT CHANGE FROM 360" TO 366" DIA.
MC CONDUIT CHANGE FROM 366" TO 372" DIA.
MC CONDUIT CHANGE FROM 372" TO 378" DIA.
MC CONDUIT CHANGE FROM 378" TO 384" DIA.
MC CONDUIT CHANGE FROM 384" TO 390" DIA.
MC CONDUIT CHANGE FROM 390" TO 396" DIA.
MC CONDUIT CHANGE FROM 396" TO 402" DIA.
MC CONDUIT CHANGE FROM 402" TO 408" DIA.
MC CONDUIT CHANGE FROM 408" TO 414" DIA.
MC CONDUIT CHANGE FROM 414" TO 420" DIA.
MC CONDUIT CHANGE FROM 420" TO 426" DIA.
MC CONDUIT CHANGE FROM 426" TO 432" DIA.
MC CONDUIT CHANGE FROM 432" TO 438" DIA.
MC CONDUIT CHANGE FROM 438" TO 444" DIA.
MC CONDUIT CHANGE FROM 444" TO 450" DIA.
MC CONDUIT CHANGE FROM 450" TO 456" DIA.
MC CONDUIT CHANGE FROM 456" TO 462" DIA.
MC CONDUIT CHANGE FROM 462" TO 468" DIA.
MC CONDUIT CHANGE FROM 468" TO 474" DIA.
MC CONDUIT CHANGE FROM 474" TO 480" DIA.
MC CONDUIT CHANGE FROM 480" TO 486" DIA.
MC CONDUIT CHANGE FROM 486" TO 492" DIA.
MC CONDUIT CHANGE FROM 492" TO 498" DIA.
MC CONDUIT CHANGE FROM 498" TO 504" DIA.
MC CONDUIT CHANGE FROM 504" TO 510" DIA.
MC CONDUIT CHANGE FROM 510" TO 516" DIA.
MC CONDUIT CHANGE FROM 516" TO 522" DIA.
MC CONDUIT CHANGE FROM 522" TO 528" DIA.
MC CONDUIT CHANGE FROM 528" TO 534" DIA.
MC CONDUIT CHANGE FROM 534" TO 540" DIA.
MC CONDUIT CHANGE FROM 540" TO 546" DIA.
MC CONDUIT CHANGE FROM 546" TO 552" DIA.
MC CONDUIT CHANGE FROM 552" TO 558" DIA.
MC CONDUIT CHANGE FROM 558" TO 564" DIA.
MC CONDUIT CHANGE FROM 564" TO 570" DIA.
MC CONDUIT CHANGE FROM 570" TO 576" DIA.
MC CONDUIT CHANGE FROM 576" TO 582" DIA.
MC CONDUIT CHANGE FROM 582" TO 588" DIA.
MC CONDUIT CHANGE FROM 588" TO 594" DIA.
MC CONDUIT CHANGE FROM 594" TO 600" DIA.
MC CONDUIT CHANGE FROM 600" TO 606" DIA.
MC CONDUIT CHANGE FROM 606" TO 612" DIA.
MC CONDUIT CHANGE FROM 612" TO 618" DIA.
MC CONDUIT CHANGE FROM 618" TO 624" DIA.
MC CONDUIT CHANGE FROM 624" TO 630" DIA.
MC CONDUIT CHANGE FROM 630" TO 636" DIA.
MC CONDUIT CHANGE FROM 636" TO 642" DIA.
MC CONDUIT CHANGE FROM 642" TO 648" DIA.
MC CONDUIT CHANGE FROM 648" TO 654" DIA.
MC CONDUIT CHANGE FROM 654" TO 660" DIA.
MC CONDUIT CHANGE FROM 660" TO 666" DIA.
MC CONDUIT CHANGE FROM 666" TO 672" DIA.
MC CONDUIT CHANGE FROM 672" TO 678" DIA.
MC CONDUIT CHANGE FROM 678" TO 684" DIA.
MC CONDUIT CHANGE FROM 684" TO 690" DIA.
MC CONDUIT CHANGE FROM 690" TO 696" DIA.
MC CONDUIT CHANGE FROM 696" TO 702" DIA.
MC CONDUIT CHANGE FROM 702" TO 708" DIA.
MC CONDUIT CHANGE FROM 708" TO 714" DIA.
MC CONDUIT CHANGE FROM 714" TO 720" DIA.
MC CONDUIT CHANGE FROM 720" TO 726" DIA.
MC CONDUIT CHANGE FROM 726" TO 732" DIA.
MC CONDUIT CHANGE FROM 732" TO 738" DIA.
MC CONDUIT CHANGE FROM 738" TO 744" DIA.
MC CONDUIT CHANGE FROM 744" TO 750" DIA.
MC CONDUIT CHANGE FROM 750" TO 756" DIA.
MC CONDUIT CHANGE FROM 756" TO 762" DIA.
MC CONDUIT CHANGE FROM 762" TO 768" DIA.
MC CONDUIT CHANGE FROM 768" TO 774" DIA.
MC CONDUIT CHANGE FROM 774" TO 780" DIA.
MC CONDUIT CHANGE FROM 780" TO 786" DIA.
MC CONDUIT CHANGE FROM 786" TO 792" DIA.
MC CONDUIT CHANGE FROM 792" TO 798" DIA.
MC CONDUIT CHANGE FROM 798" TO 804" DIA.
MC CONDUIT CHANGE FROM 804" TO 810" DIA.
MC CONDUIT CHANGE FROM 810" TO 816" DIA.
MC CONDUIT CHANGE FROM 816" TO 822" DIA.
MC CONDUIT CHANGE FROM 822" TO 828" DIA.
MC CONDUIT CHANGE FROM 828" TO 834" DIA.
MC CONDUIT CHANGE FROM 834" TO 840" DIA.
MC CONDUIT CHANGE FROM 840" TO 846" DIA.
MC CONDUIT CHANGE FROM 846" TO 852" DIA.
MC CONDUIT CHANGE FROM 852" TO 858" DIA.
MC CONDUIT CHANGE FROM 858" TO 864" DIA.
MC CONDUIT CHANGE FROM 864" TO 870" DIA.
MC CONDUIT CHANGE FROM 870" TO 876" DIA.
MC CONDUIT CHANGE FROM 876" TO 882" DIA.
MC CONDUIT CHANGE FROM 882" TO 888" DIA.
MC CONDUIT CHANGE FROM 888" TO 894" DIA.
MC CONDUIT CHANGE FROM 894" TO 900" DIA.
MC CONDUIT CHANGE FROM 900" TO 906" DIA.
MC CONDUIT CHANGE FROM 906" TO 912" DIA.
MC CONDUIT CHANGE FROM 912" TO 918" DIA.
MC CONDUIT CHANGE FROM 918" TO 924" DIA.
MC CONDUIT CHANGE FROM 924" TO 930" DIA.
MC CONDUIT CHANGE FROM 930" TO 936" DIA.
MC CONDUIT CHANGE FROM 936" TO 942" DIA.
MC CONDUIT CHANGE FROM 942" TO 948" DIA.
MC CONDUIT CHANGE FROM 948" TO 954" DIA.
MC CONDUIT CHANGE FROM 954" TO 960" DIA.
MC CONDUIT CHANGE FROM 960" TO 966" DIA.
MC CONDUIT CHANGE FROM 966" TO 972" DIA.
MC CONDUIT CHANGE FROM 972" TO 978" DIA.
MC CONDUIT CHANGE FROM 978" TO 984" DIA.
MC CONDUIT CHANGE FROM 984" TO 990" DIA.
MC CONDUIT CHANGE FROM 990" TO 996" DIA.
MC CONDUIT CHANGE FROM 996" TO 1002" DIA.

AREAS REQUIRING FRONT OF THE ROAD

REQUIREMENT	STATE	CITY	EXCESS	DEF	REMARKS
MC CONDUIT CHANGE FROM 12" TO 18" DIA.					
MC CONDUIT CHANGE FROM 18" TO 24" DIA.					
MC CONDUIT CHANGE FROM 24" TO 30" DIA.					
MC CONDUIT CHANGE FROM 30" TO 36" DIA.					
MC CONDUIT CHANGE FROM 36" TO 42" DIA.					
MC CONDUIT CHANGE FROM 42" TO 48" DIA.					
MC CONDUIT CHANGE FROM 48" TO 54" DIA.					
MC CONDUIT CHANGE FROM 54" TO 60" DIA.					
MC CONDUIT CHANGE FROM 60" TO 66" DIA.					
MC CONDUIT CHANGE FROM 66" TO 72" DIA.					
MC CONDUIT CHANGE FROM 72" TO 78" DIA.					
MC CONDUIT CHANGE FROM 78" TO 84" DIA.					
MC CONDUIT CHANGE FROM 84" TO 90" DIA.					
MC CONDUIT CHANGE FROM 90" TO 96" DIA.					
MC CONDUIT CHANGE FROM 96" TO 102" DIA.					
MC CONDUIT CHANGE FROM 102" TO 108" DIA.					
MC CONDUIT CHANGE FROM 108" TO 114" DIA.					
MC CONDUIT CHANGE FROM 114" TO 120" DIA.					
MC CONDUIT CHANGE FROM 120" TO 126" DIA.					
MC CONDUIT CHANGE FROM 126" TO 132" DIA.					
MC CONDUIT CHANGE FROM 132" TO 138" DIA.					
MC CONDUIT CHANGE FROM 138" TO 144" DIA.					
MC CONDUIT CHANGE FROM 144" TO 150" DIA.					
MC CONDUIT CHANGE FROM 150" TO 156" DIA.					
MC CONDUIT CHANGE FROM 156" TO 162" DIA.					
MC CONDUIT CHANGE FROM 162" TO 168" DIA.					
MC CONDUIT CHANGE FROM 168" TO 174" DIA.					
MC CONDUIT CHANGE FROM 174" TO 180" DIA.					
MC CONDUIT CHANGE FROM 180" TO 186" DIA.					
MC CONDUIT CHANGE FROM 186" TO 192" DIA.					
MC CONDUIT CHANGE FROM 192" TO 198" DIA.					
MC CONDUIT CHANGE FROM 198" TO 204" DIA.					
MC CONDUIT CHANGE FROM 204" TO 210" DIA.					
MC CONDUIT CHANGE FROM 210" TO 216" DIA.					
MC CONDUIT CHANGE FROM 216" TO 222" DIA.					
MC CONDUIT CHANGE FROM 222" TO 228" DIA.					
MC CONDUIT CHANGE FROM 228" TO 234" DIA.					
MC CONDUIT CHANGE FROM 234" TO 240" DIA.					
MC CONDUIT CHANGE FROM 240" TO 246" DIA.					
MC CONDUIT CHANGE FROM 246" TO 252" DIA.					
MC CONDUIT CHANGE FROM 252" TO 258" DIA.					
MC CONDU					

RIGHT OF WAY CONTRACT -- STATE HIGHWAY- TEMPORARY EASEMENT

RW 8-4 (Rev. 09/2021)

EXHIBIT "C"

Number
65054

EXHIBIT "A"

PARCEL 2 (65054-2)

An easement for temporary construction purposes described as follows:

BEGINNING at the northeast corner of said parcel; Thence along the east line of said parcel South 18°42'13" West, 142.28 feet;

Thence across said parcel South 18°42'13" West, 142.28 feet to the west line of said parcel;

Thence along the west and north lines of said parcel the following four (4) courses:

- 1) South 62°51'34" West, 152.17 feet;
- 2) North 18°42'13" East, 143.74 feet;
- 3) North 66°20'51" East, 23.87 feet;
- 4) North 62°39'55" East, 127.29 feet to the **POINT OF BEGINNING**.

CONTAINING 15,062 square feet, more or less.

The bearings and distances used in the above description are based on the California Coordinate System of 1983 (CCS83) Zone 3, Epoch 2017.50. Multiply distances by 1.000062454 to obtain ground distances.

This real property description has been prepared by me, or under the direction, in conformance with the California Professional Land Surveyors Act.


Scott A. Shortlidge



7-28-2025
Date

