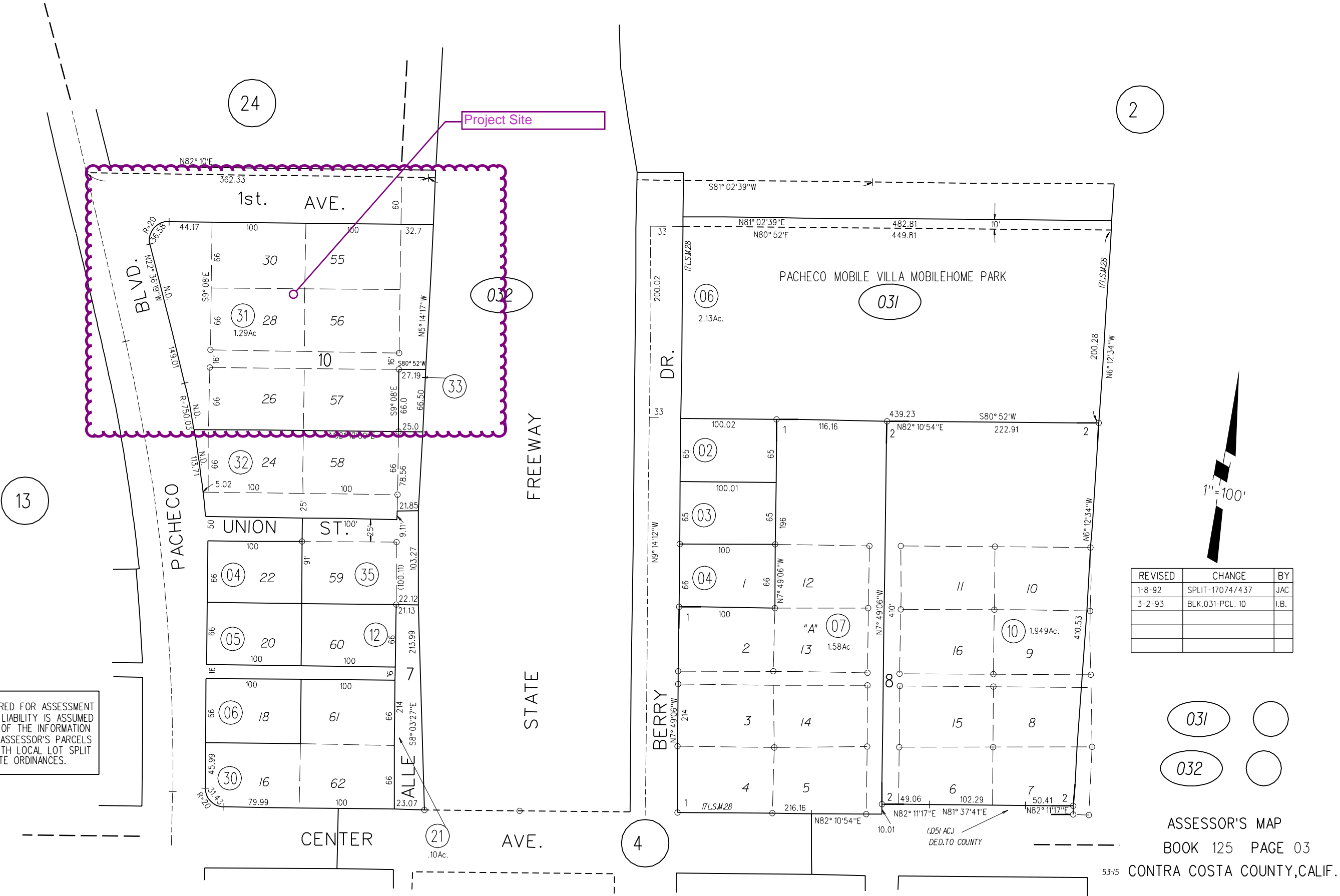


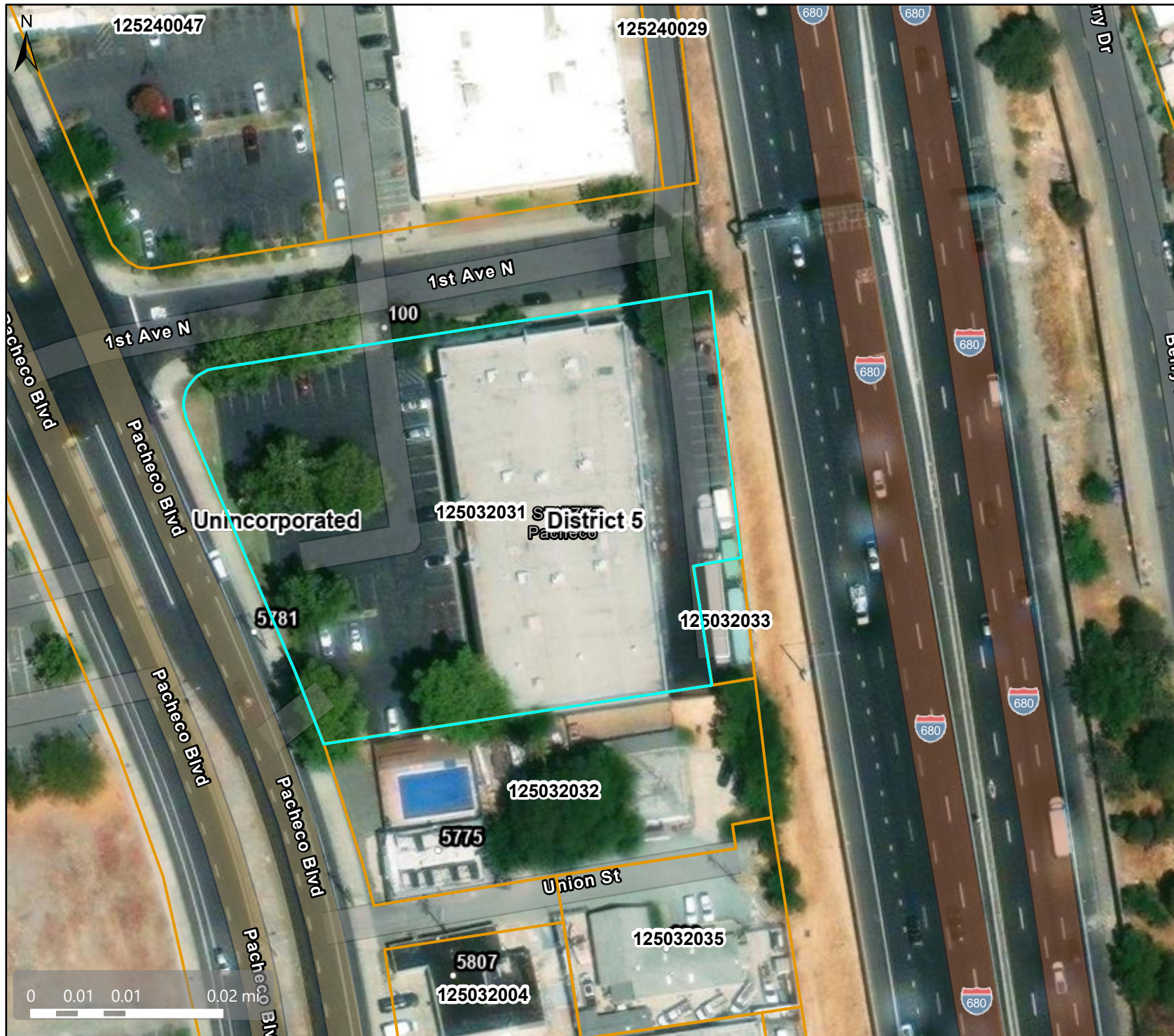
TOWN OF PACHECO
RANCHO MONTE DEL DIABLO

- 1- 112 PM. 39 & 40 10-22-84
2- POR. 161 P.M. 17 2-5-93 (REVERSION TO ACREAGE)

NOTE: THIS MAP WAS PREPARED FOR ASSESSMENT PURPOSES ONLY. NO LIABILITY IS ASSUMED FOR THE ACCURACY OF THE INFORMATION DELINEATED HEREON. ASSESSOR'S PARCELS MAY NOT COMPLY WITH LOCAL LOT SPLIT OR BUILDING SITE ORDINANCES.



Aerial View



Map Legend

County Border

Assessment
Parcels

Planning Layers (DCD)

Unincorporated

Board of
Supervisors'
Districts

Base Data

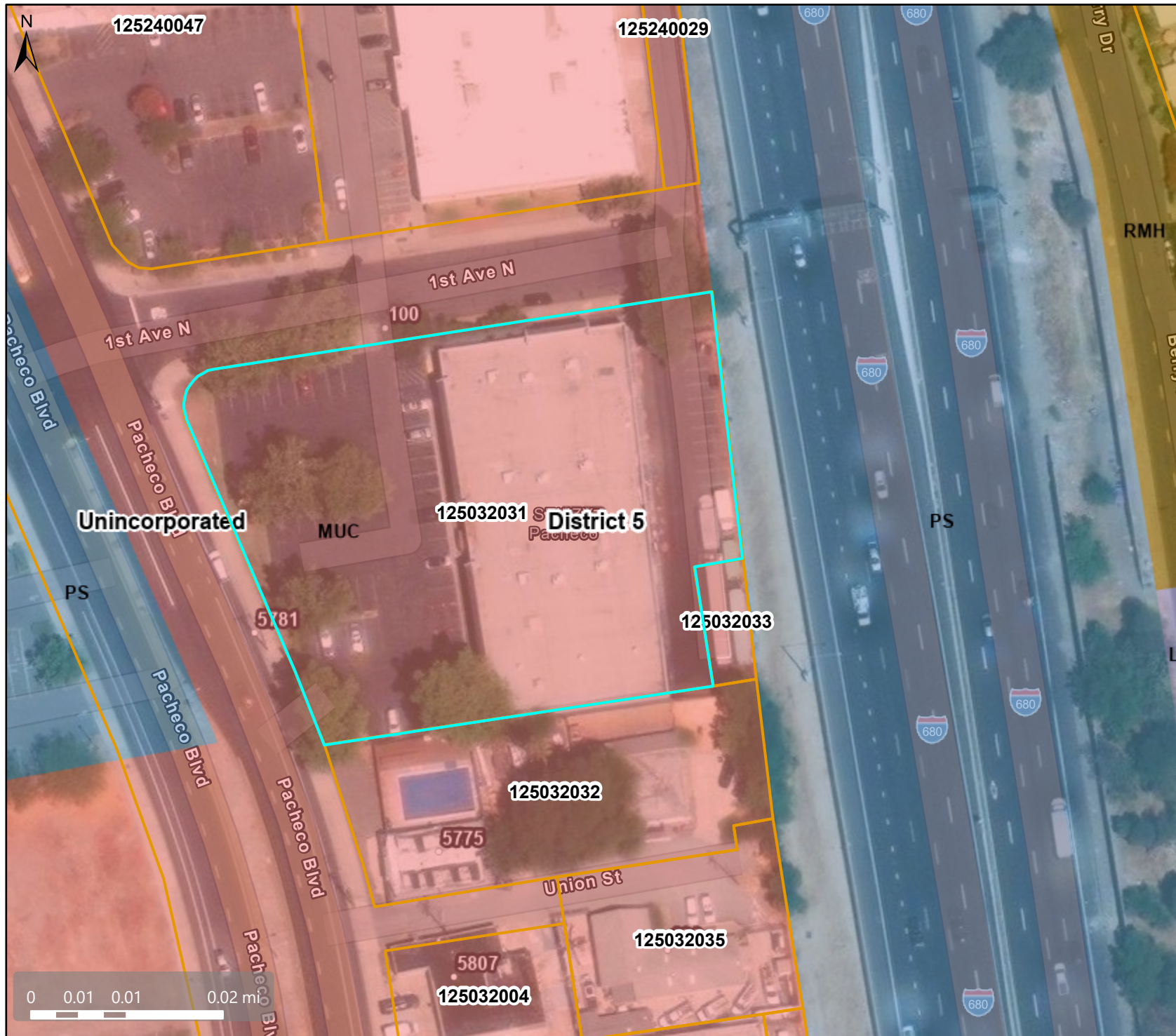
Address Points

This map is a user generated, static output from an internet mapping application and is intended for reference use only. Data layers that appear on this map may or may not be accurate, current, or otherwise reliable.

THIS MAP IS NOT TO BE USED FOR NAVIGATION.
CCMap is maintained by Contra Costa County Department of Information Technology, County GIS. Data layers contained within the CCMap application are provided by various Contra Costa County Departments. Please direct all data inquiries to the appropriate department.

Spatial Reference
PCS: WGS 1984 Web Mercator Auxiliary Sphere
Datum: WGS 1984

General Plan Designation



Map Legend

- County Border
- Assessment Parcels

Planning Layers (DCD)

General Plan

- RMH (Residential Medium-High Density) (17-30 du/na)
- MUC (Mixed-Use Community-Specific) (Variable)
- LI (Light Industry) (1.5 FAR)
- PS (Public and Semi-Public)
- Unincorporated
- Board of Supervisors' Districts

Base Data

- Address Points

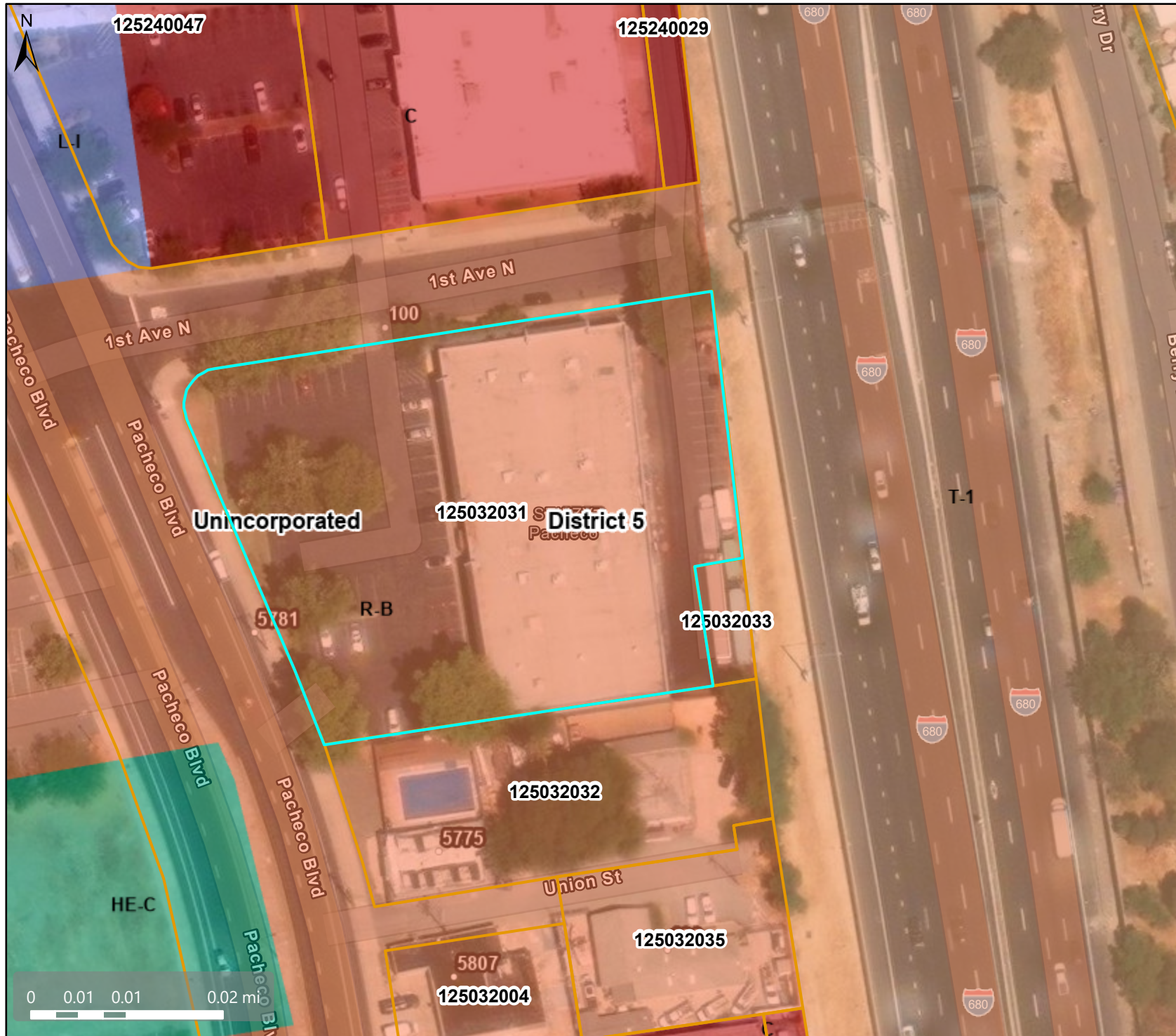
This map is a user generated, static output from an internet mapping application and is intended for reference use only. Data layers that appear on this map may or may not be accurate, current, or otherwise reliable.

THIS MAP IS NOT TO BE USED FOR NAVIGATION.

CCMap is maintained by Contra Costa County Department of Information Technology, County GIS. Data layers contained within the CCMap application are provided by various Contra Costa County Departments. Please direct all data inquiries to the appropriate department.

Spatial Reference
 PCS: WGS 1984 Web Mercator Auxiliary Sphere
 Datum: WGS 1984

Zoning District



Map Legend

- County Border
- Assessment Parcels

Planning Layers (DCD)

Zoning

ZONE_OVER

- R-B (Retail Business)
- C (General Commercial)
- L-I (Light Industrial)
- HE-C (Housing Element Consistency)
- T-1 (Mobile Home/Manufactured Home Park)
- Unincorporated
- Board of Supervisors' Districts

Base Data

- Address Points

This map is a user generated, static output from an internet mapping application and is intended for reference use only. Data layers that appear on this map may or may not be accurate, current, or otherwise reliable.

THIS MAP IS NOT TO BE USED FOR NAVIGATION.

CCMap is maintained by Contra Costa County Department of Information Technology, County GIS. Data layers contained within the CCMap application are provided by various Contra Costa County Departments. Please direct all data inquiries to the appropriate department.

Spatial Reference
PCS: WGS 1984 Web Mercator Auxiliary Sphere
Datum: WGS 1984