



**Board of Supervisors
Annual Retreat 2024**

January 30, 2024



Agenda

- Major Projects continuing 2024
 - ADR Project – Completion June, 2024
 - WRTH Project – Completion early 2025
- CFMP first 5 year Implementation Plan
 - Central Storage Facility
 - East County Facilities
 - Pittsburg-Los Medanos Community Center
 - Brentwood Service Hub



Major Projects Update

Admin Demo and Redevelopment (ADR)

- Project completion June 2024





Major Projects Update

West County Reentry, Treatment and Housing (WRTH)

- Project underway
 - Project completion expected First Quarter, 2025



Capital Facilities Master Plan

First 5-year implementation

Central Storage Facility

3 options

Original CFMP	25,000 square feet	Est \$20-22.5 million
Original plus Elections	35,000 square feet	Est \$28-31.5 million
Identified need + Elections	50,000 square feet	Est \$40-45 million

Capital Facilities Master Plan First 5-year implementation

Central Storage Facility location



Capital Facilities Master Plan First 5-year implementation

Central Storage Facility renderings





Capital Facilities Master Plan First 5-year implementation

East County Facilities

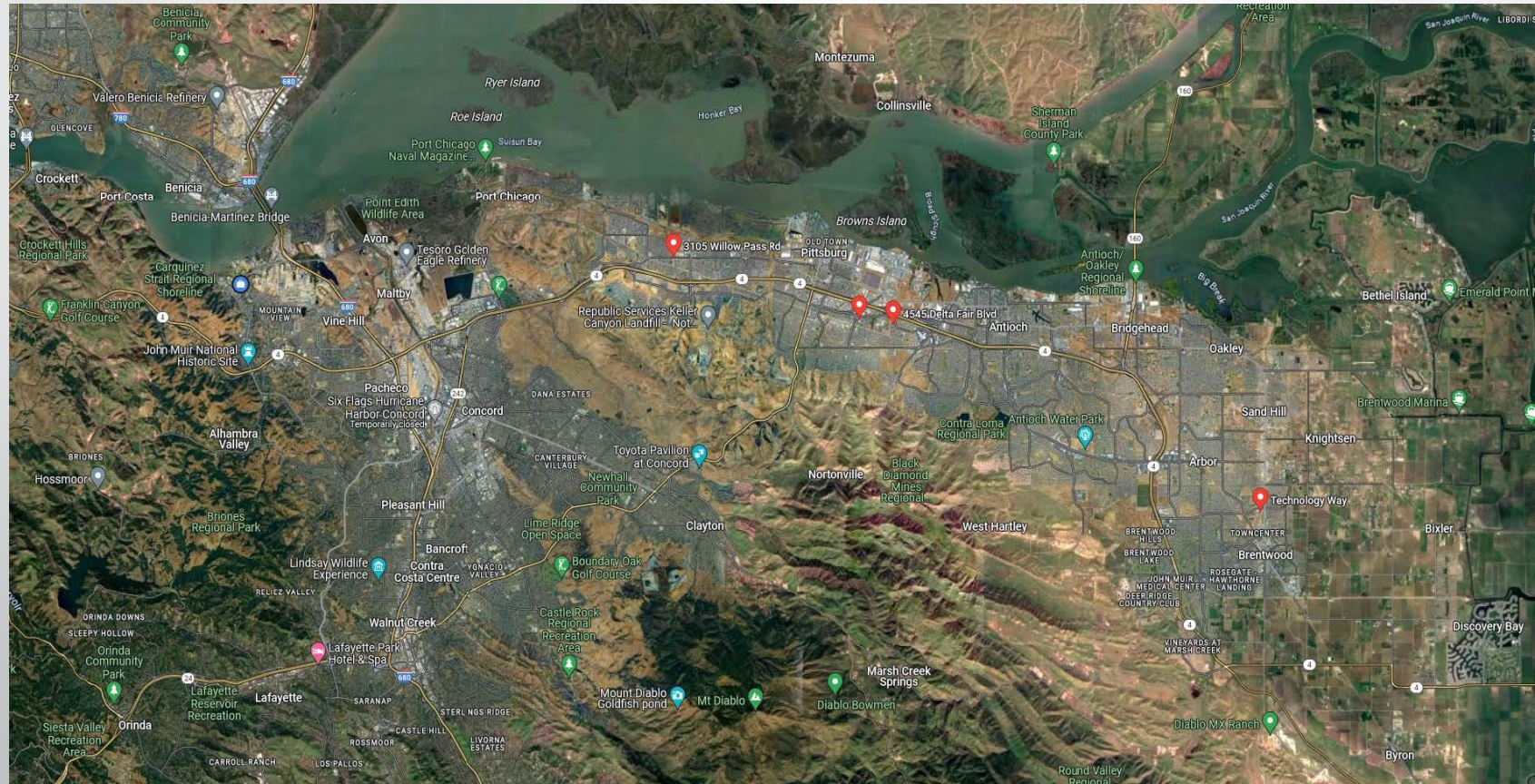
Pittsburg-Los Medanos Community Center

Brentwood Service Hub

Antioch Delta Fair Service refresh

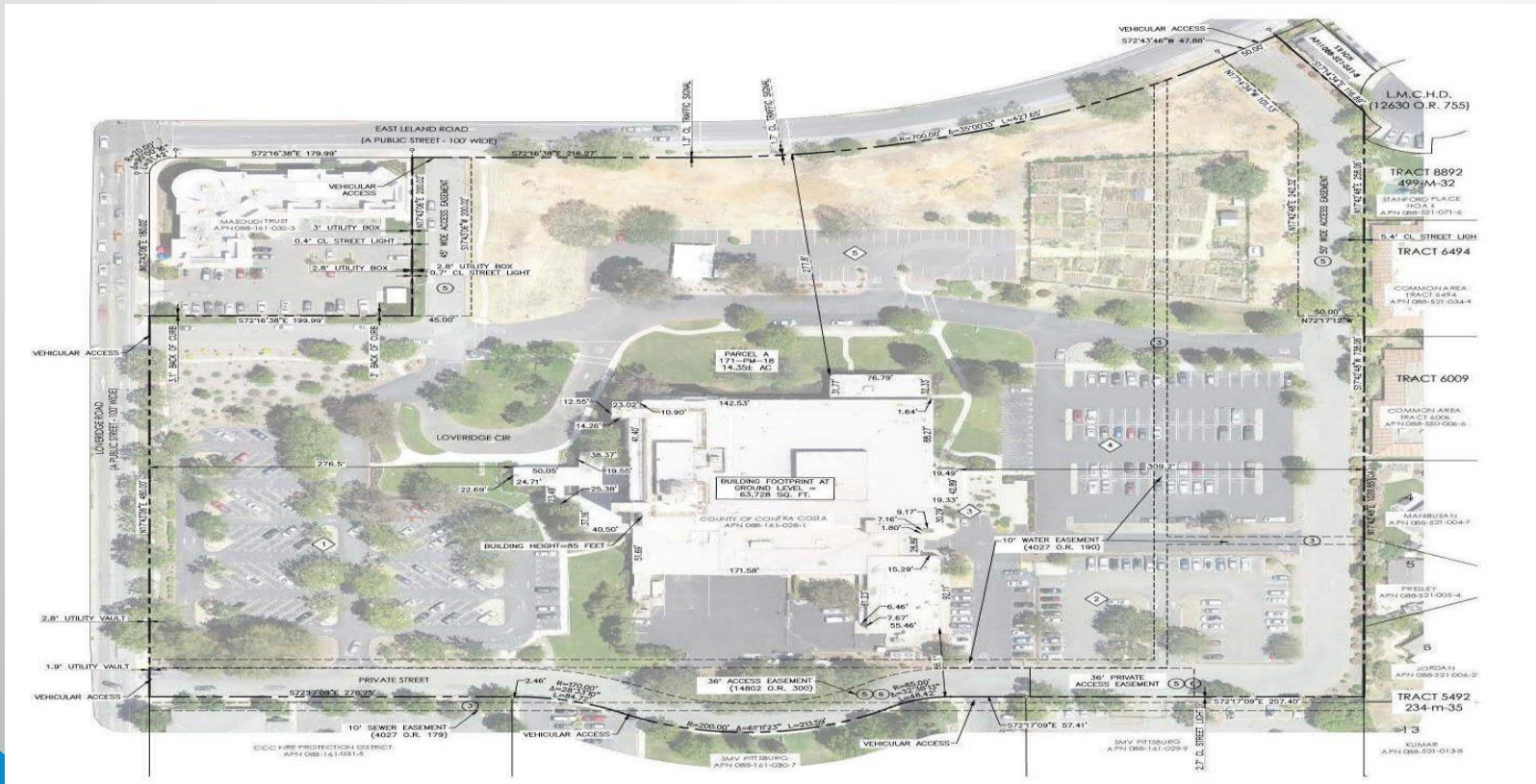
Capital Facilities Master Plan First 5-year implementation

East County Facilities locations



Capital Facilities Master Plan First 5-year implementation

Pittsburg-Los Medanos Community Center proposed location



Capital Facilities Master Plan First 5-year implementation

Pittsburg Community Center

15-20,000 square foot youth center

5-6,000 behavioral/mental health counseling center

Estimated cost \$16-26 million

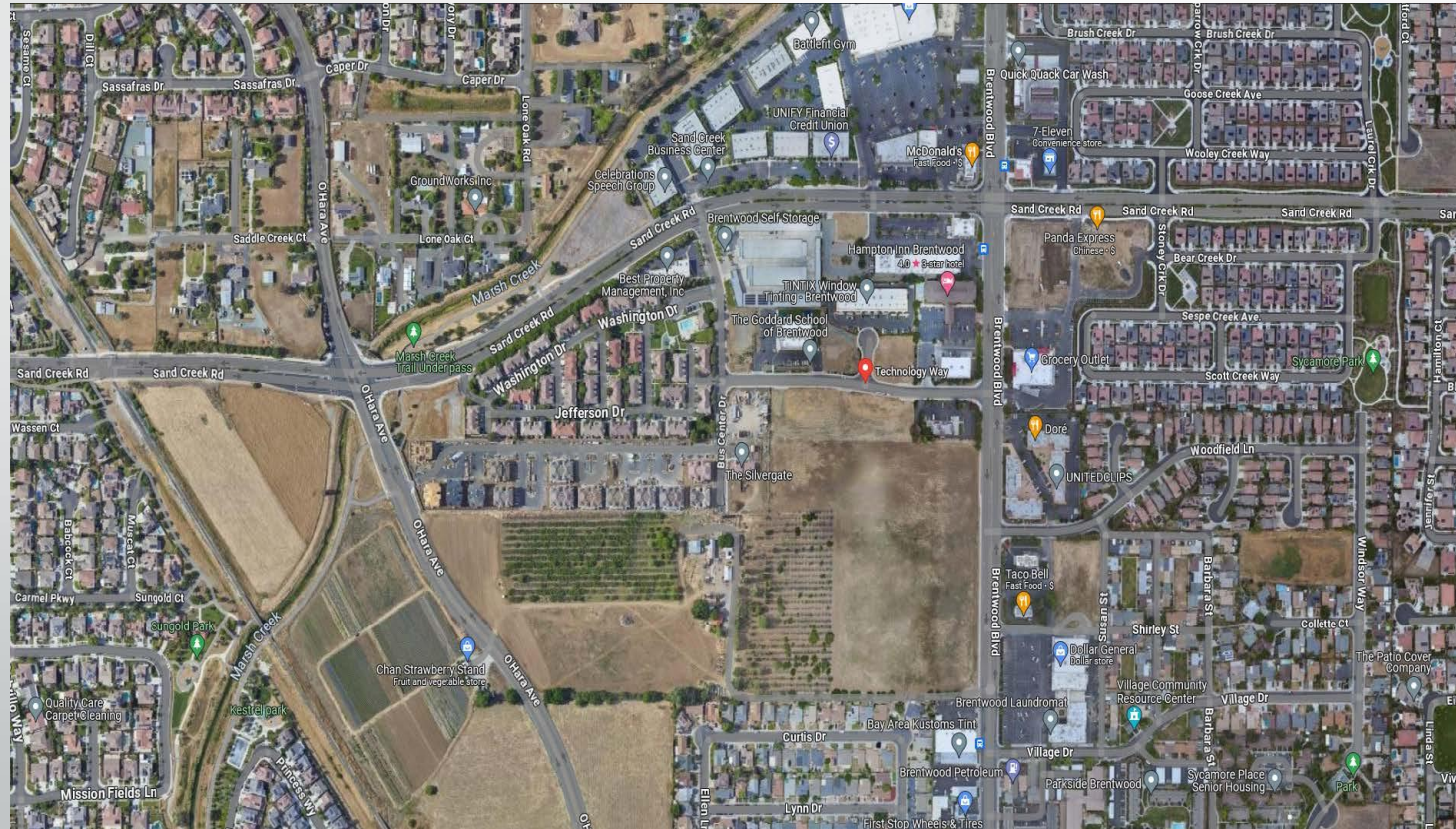
Capital Facilities Master Plan First 5-year implementation

Pittsburg-Los Medanos Community Center rendering



Capital Facilities Master Plan First 5-year implementation

Brentwood Service Hub location



Capital Facilities Master Plan First 5-year implementation

Brentwood Service Hub – Estimated Cost \$75 million

60-70,000 square foot service delivery hub

Employment and Human Services

Probation

Clerk-Recorder

Public Defender

Child Support Services

Citizen Access Center

Capital Facilities Master Plan First 5-year implementation

Next Steps

Central Storage Facility – Design-Build procurement process

Board action by end of 2024 on construction contract

Pittsburg-Los Medanos Community Center - Design-Build procurement process

Board action by end of 2024 on construction contract

East County Service Hub - Design-Build procurement process

Board action by June, 2025 on construction contract



Questions