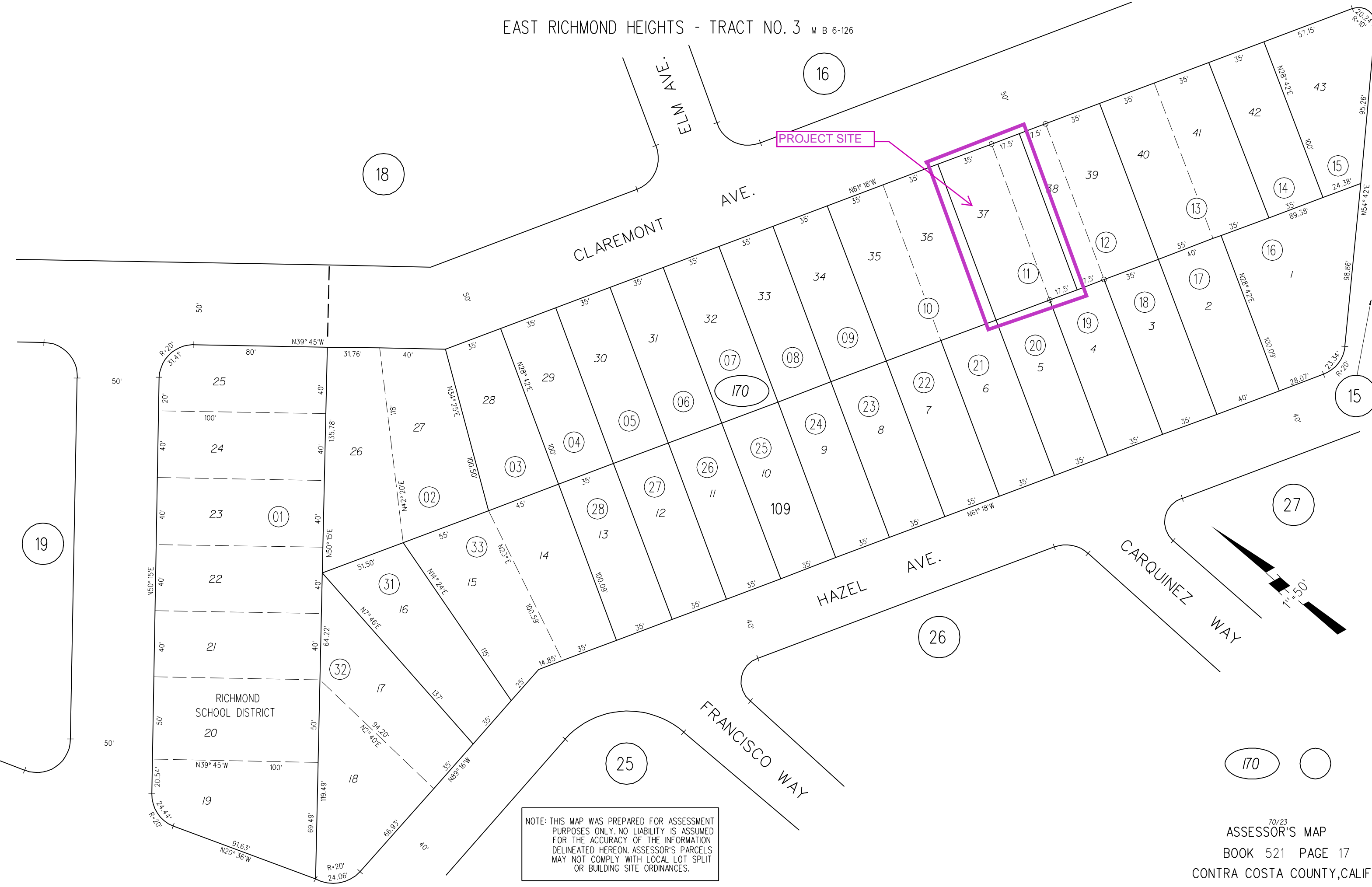


EAST RICHMOND HEIGHTS - TRACT NO. 3 M B 6-126








PROJECT SITE

NOTE: THIS MAP WAS PREPARED FOR ASSESSMENT PURPOSES ONLY. NO LIABILITY IS ASSUMED FOR THE ACCURACY OF THE INFORMATION DELINEATED HEREON. ASSESSOR'S PARCELS MAY NOT COMPLY WITH LOCAL LOT SPLIT OR BUILDING SITE ORDINANCES.

# Aerial Map



## Map Legend

-  County Border
-  Assessment Parcels
- Planning Layers (DCD)**
  -  Unincorporated
  -  Board of Supervisors' Districts
- Base Data**
  -  Address Points

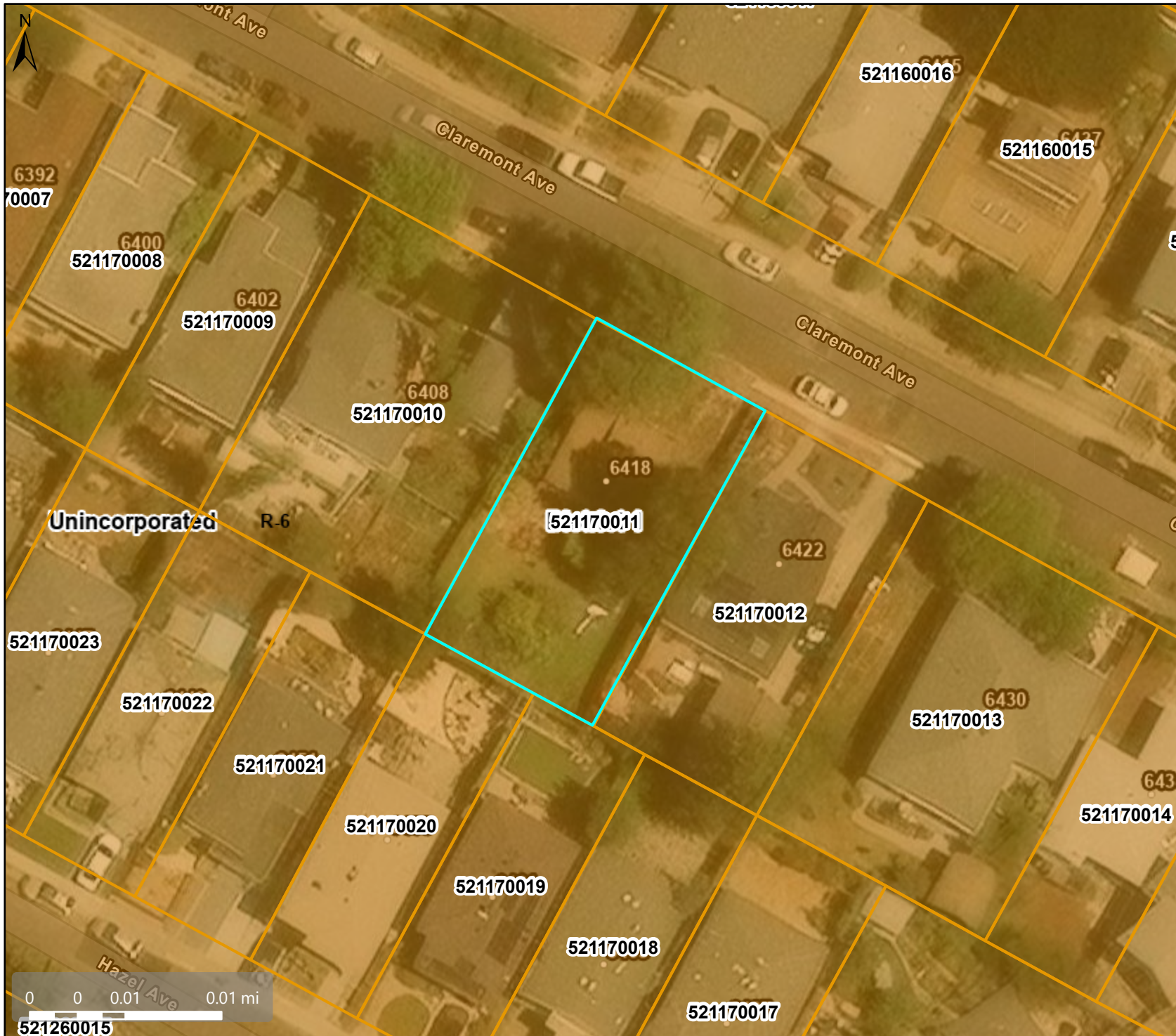
This map is a user generated, static output from an internet mapping application and is intended for reference use only. Data layers that appear on this map may or may not be accurate, current, or otherwise reliable.

**THIS MAP IS NOT TO BE USED FOR NAVIGATION.**

CCMap is maintained by Contra Costa County Department of Information Technology, County GIS. Data layers contained within the CCMap application are provided by various Contra Costa County Departments. Please direct all data inquiries to the appropriate department.

**Spatial Reference**  
PCS: WGS 1984 Web Mercator Auxiliary Sphere  
Datum: WGS 1984

# Zoning Map



## Map Legend

- County Border
- Assessment  
Parcels
- Planning Layers  
(DCD)
- Zoning
- ZONE\_OVER
- R-6 (Single  
Family  
Residential)
- Unincorporated
- Board of  
Supervisors'  
Districts
- Base Data
- Address Points

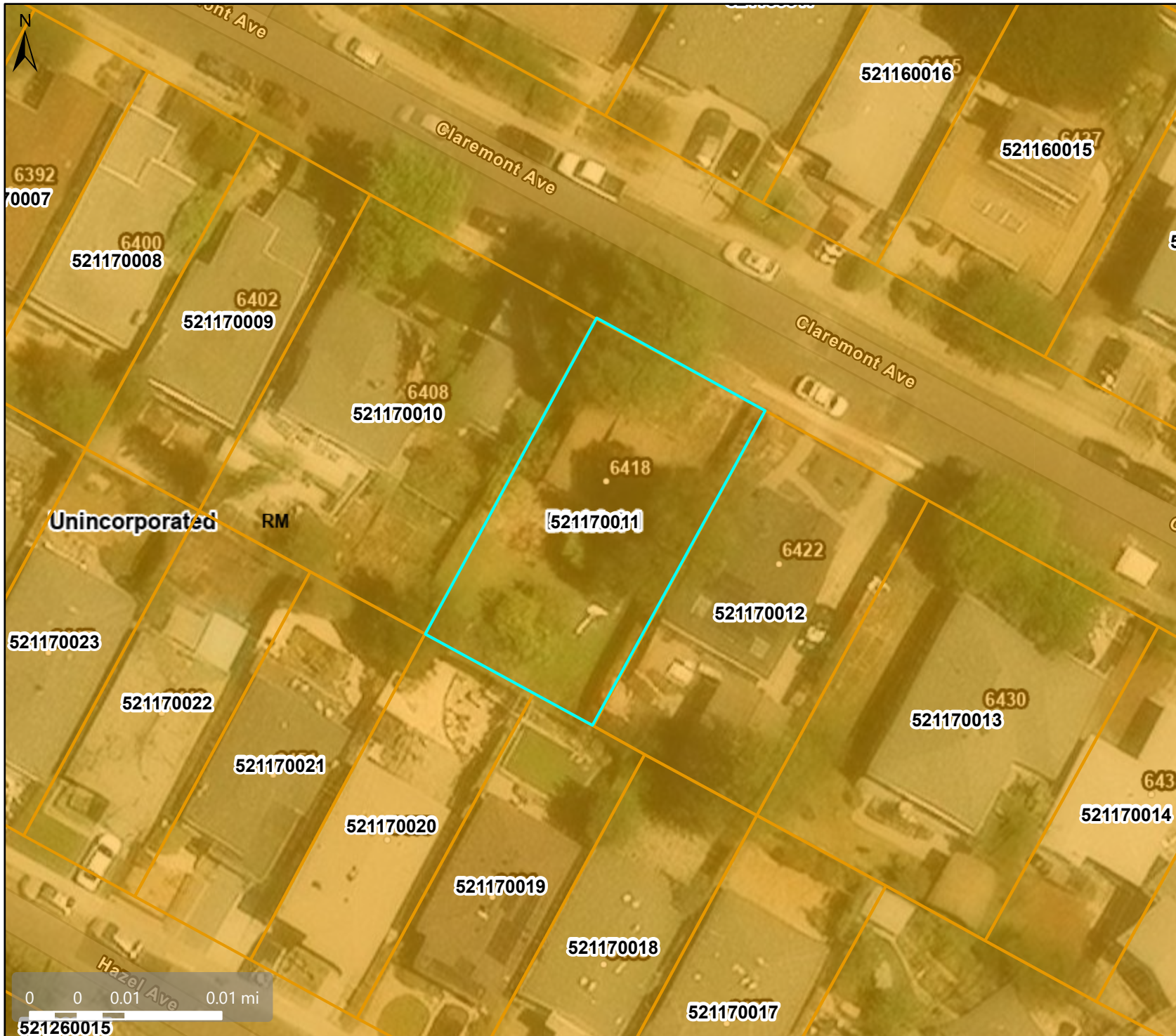
This map is a user generated, static output from an internet mapping application and is intended for reference use only. Data layers that appear on this map may or may not be accurate, current, or otherwise reliable.

THIS MAP IS NOT TO BE USED FOR NAVIGATION.







CCMap is maintained by Contra Costa County Department of Information Technology, County GIS. Data layers contained within the CCMap application are provided by various Contra Costa County Departments. Please direct all data inquiries to the appropriate department.

Spatial Reference  
 PCS: WGS 1984 Web Mercator Auxiliary Sphere  
 Datum: WGS 1984

# General Plan Map



## Map Legend

-  County Border
-  Assessment  
Parcels
- Planning Layers  
(DCD)**
- General Plan**
-  RM (Residential  
Medium  
Density) (7-17  
du/na)
-  Unincorporated
-  Board of  
Supervisors'  
Districts
- Base Data**
-  Address Points

This map is a user generated, static output from an internet mapping application and is intended for reference use only. Data layers that appear on this map may or may not be accurate, current, or otherwise reliable.

**THIS MAP IS NOT TO BE USED FOR NAVIGATION.**

CCMap is maintained by Contra Costa County Department of Information Technology, County GIS. Data layers contained within the CCMap application are provided by various Contra Costa County Departments. Please direct all data inquiries to the appropriate department.

**Spatial Reference**  
 PCS: WGS 1984 Web Mercator Auxiliary Sphere  
 Datum: WGS 1984