



Contra Costa County  
Sustainability Commission

**MCE**

A local, not-for-profit  
electricity provider

June 22, 2026

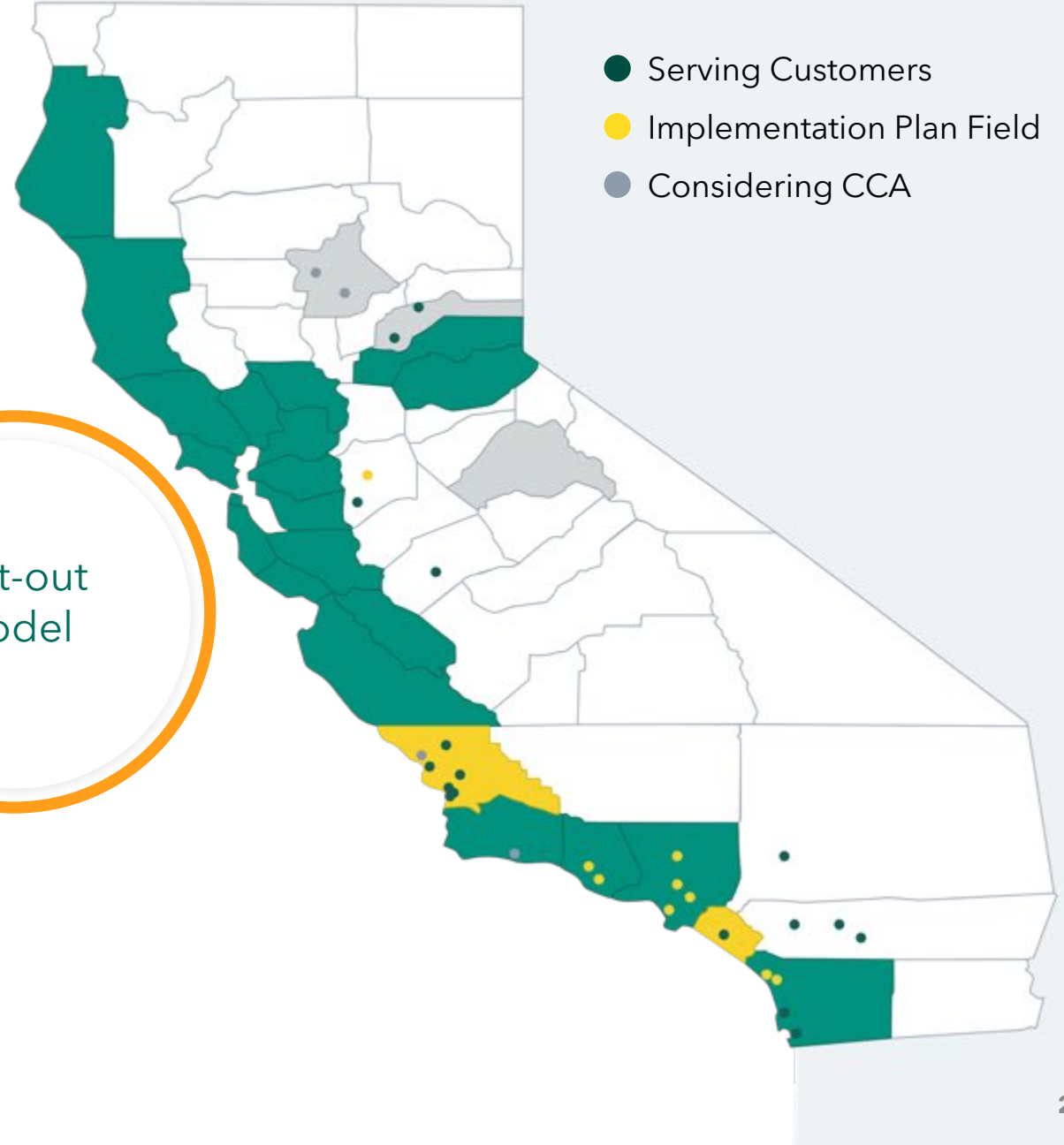
# Community Choice in California

Enabling  
Legislation  
AB 117, 2002

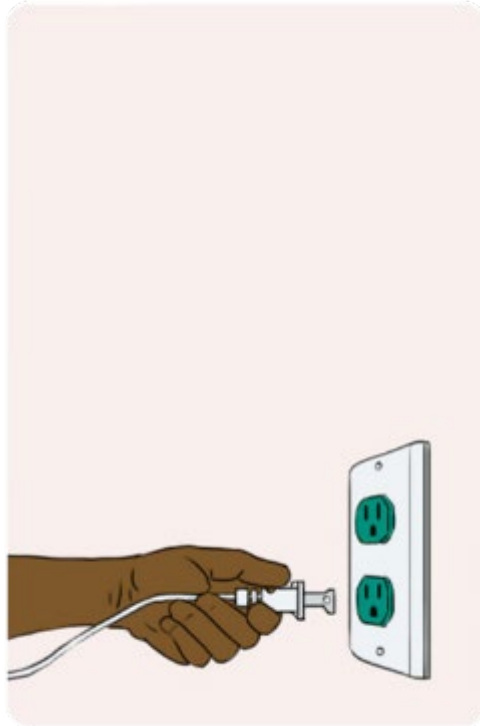
Over 14 million  
customers & 200  
communities

Opt-out  
model

- Serving Customers
- Implementation Plan Field
- Considering CCA

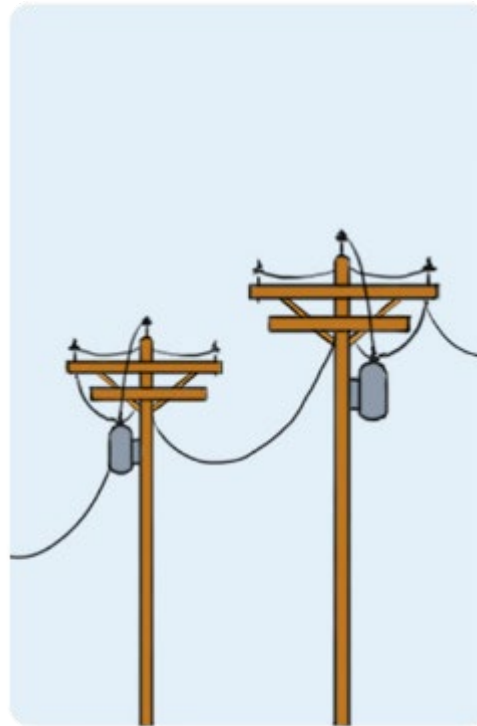


# How MCE Works



## You

Benefit from cleaner air, stable rates, choice and local control



## PG&E

Delivers energy, maintains lines, and sends bills

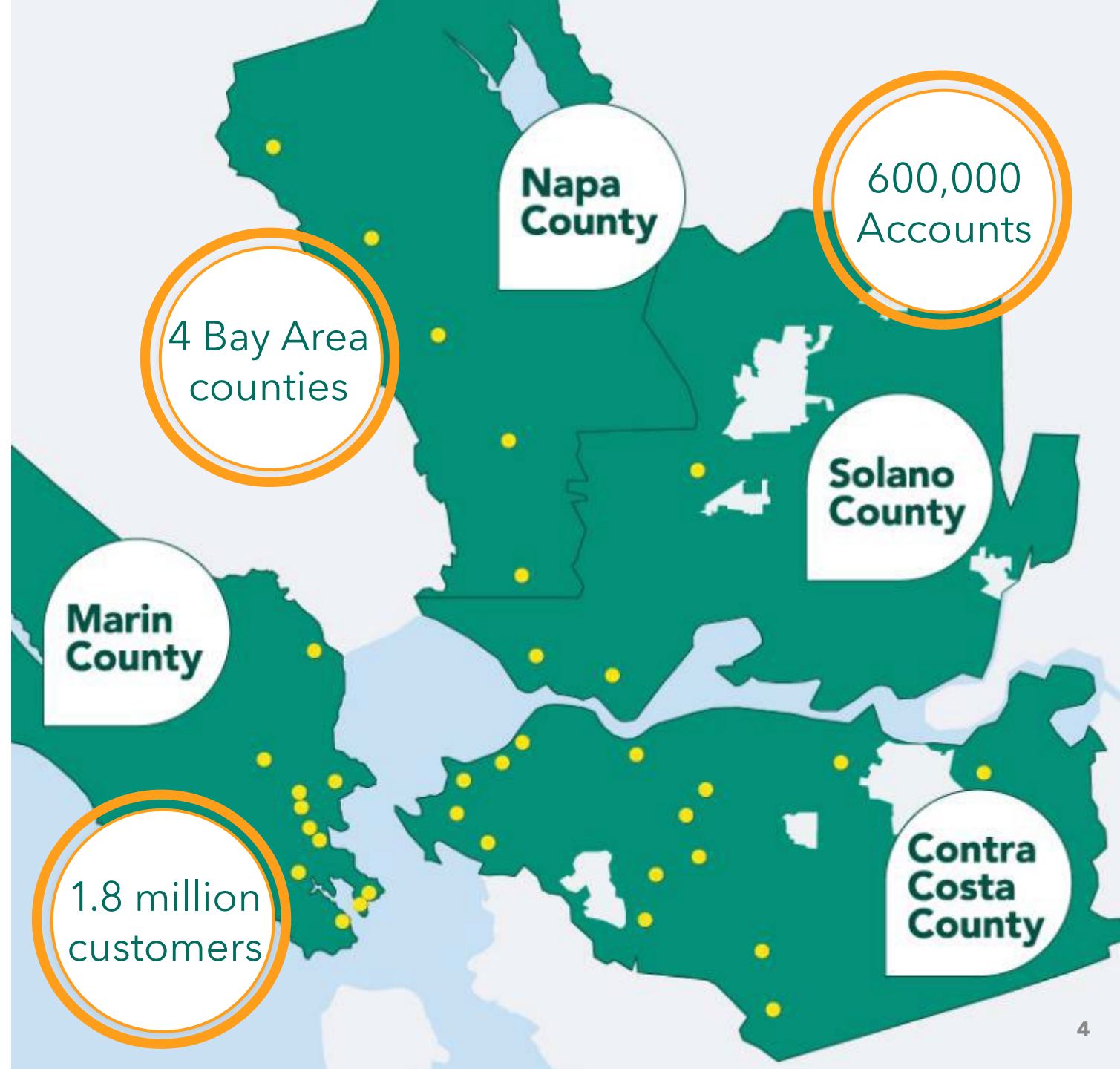


## MCE

Buys and builds clean and renewable energy for you

# Not-for-Profit Public Agency

**34 Board Members.  
Elected officials.  
No tax dollars.**





# Your Energy Choices

# Choice is Power

MCE  
Deep Green  
**100%**  
RENEWABLE

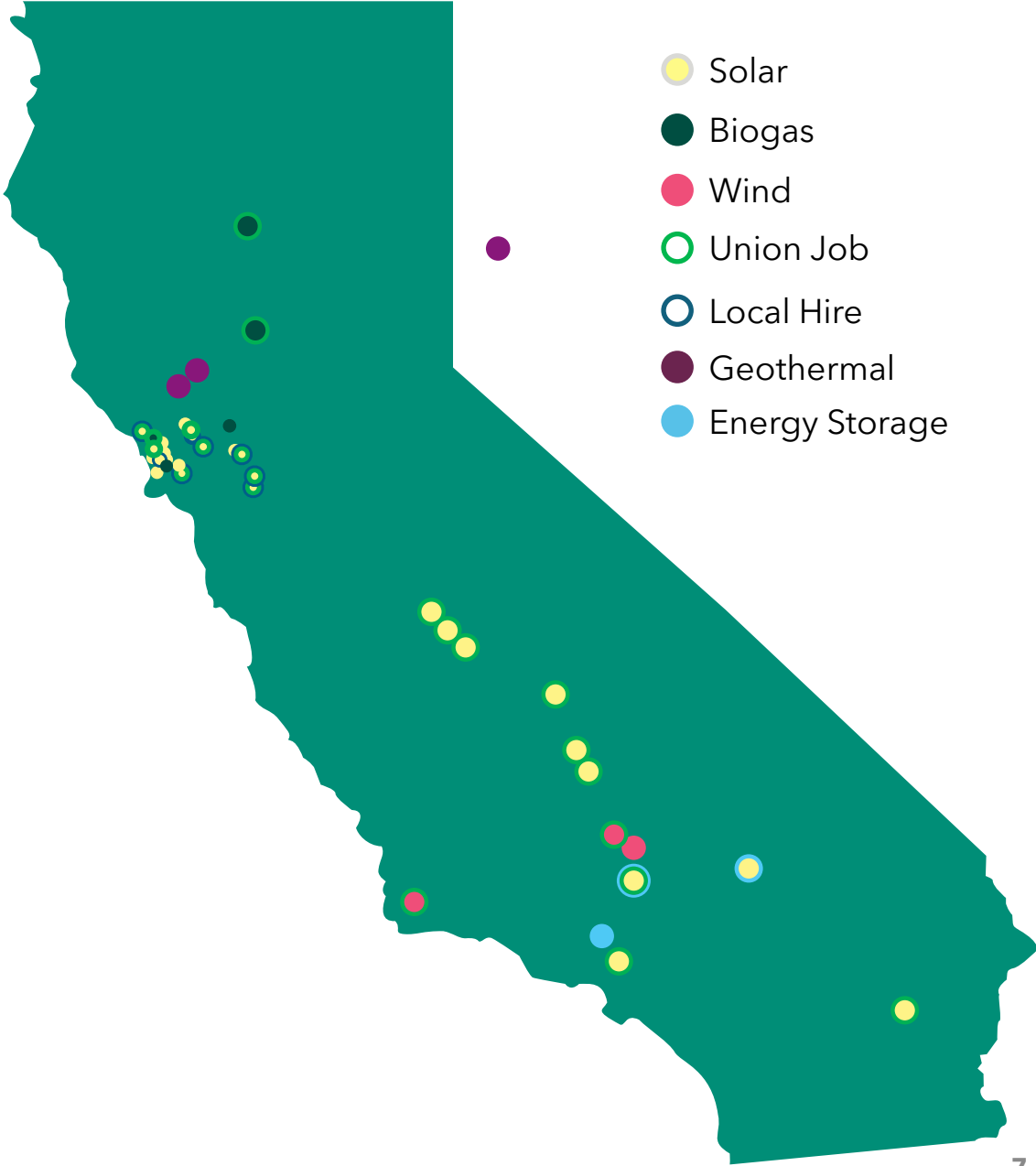
## Default Service

MCE  
Light Green  
**60%**  
RENEWABLE

PG&E  
**23%**  
RENEWABLE

# 2024 Power Content

	PG&E	MCE Light Green	MCE Deep Green
<b>Renewable (%)</b>	<b>23%</b>	<b>69%</b>	<b>100%</b>
Bioenergy	3	2	0
Geothermal	0	2	0
Eligible Hydro	1	4	0
Solar	14	44	50
Wind	4	17	50
Large Hydro	12	31	0
Natural Gas	2	0	0
Nuclear	63	0	0
Unspecified/Other	0	0	0



# Residential Cost Comparison Example

	MCE Light Green <b>60%</b> RENEWABLE	MCE Deep Green <b>100%</b> RENEWABLE	PG&E <b>23%</b> RENEWABLE
<b>Electric Generation</b>	<b>\$51.22</b>	<b>\$56.69</b>	<b>\$53.94</b>
PG&E Electric Delivery	\$129.35	\$129.35	\$129.35
Additional PG&E Fees	\$16.29	\$16.29	\$-4.02
<b>Average Total Monthly Cost</b>	<b>\$196.86</b>	<b>\$202.33</b>	<b>\$179.26</b>

\*Rates effective April 1, 2026

# Rate Reductions and Customer Bill Relief

## Lower generation rates:

- A 14% reduction in MCE's generation rate

## Temporary bill credit:

- A \$0.0062/kWh credit, applied through 2026
- Helping offset recent PG&E exit fee increase

## Expanded MCE Cares Credit

- \$10M additional funding
- \$20/month credit residential
- \$25/month credit small business customers

**CARE, FERA, and Medical Baseline Allowance** are provided in full.



# Welcome Green Leaders



**MCE and Contra  
Costa County**

Time	Event
10:00	Registration
10:30	Welcome
11:00	Keynote
11:30	Break + Lunch
12:00	Activity
1:00	Workshop
2:30	Break
3:00	Final

MCE Because of Youth logo at the bottom of the sign.

# Contra Costa At A Glance



## Strong Participation, Real Community Impact

Customer Enrollment

Community Benefits<sup>1</sup>

**MCE Participation Rate**

89%

**EV Rebates Distributed<sup>2</sup>**

\$465,000

**Deep Green**

6%

**EV Ports Installed<sup>3</sup>**

494

**Solar**

20%

**Energy Charging  
Rebates Distributed**

\$1.2 Million

**CARE Discount**

16%

**Energy Efficiency  
Rebates Distributed**

\$400,000

**Medical Baseline**

4%

<sup>1</sup> Cumulative statistics since joining MCE

<sup>2</sup> Funds distributed directly to customers

<sup>3</sup> Ports installed at public parking lots for small businesses, schools, multifamily housing, and public agencies

# Community Engagement

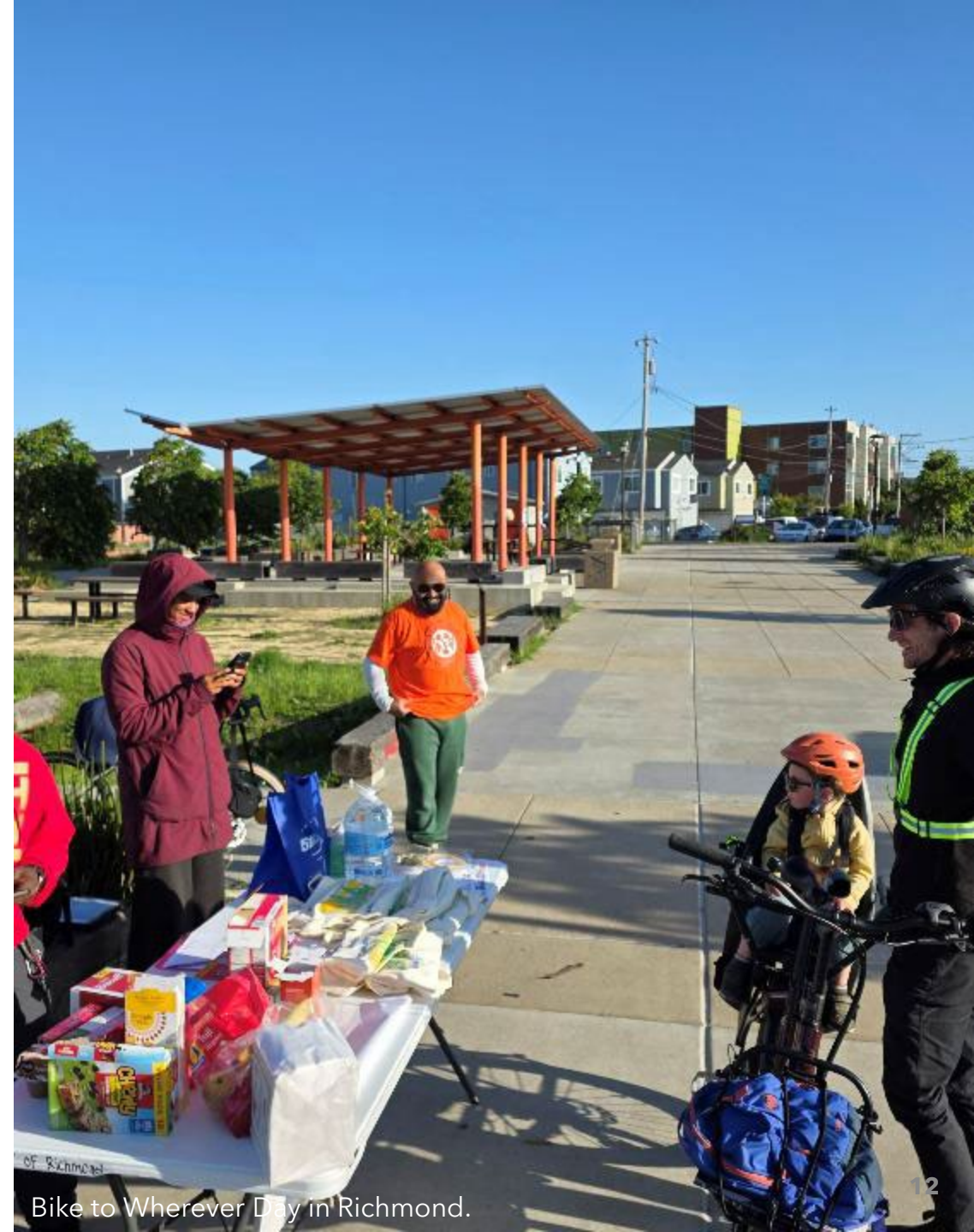
## Community Focus Groups

MCE partnered with five community-based organizations to host bilingual focus groups through its Charged by Public Power Program.

- 66 residents shared input on expanding clean transportation options, EV charging, carshare, bikeshare
- Partners included: City of San Pablo, Contra Costa County Library, Monument Crisis Center, and SparkPoint Contra Costa.

## Local Sponsorship

- Over \$145,000 invested across the County to advance health, climate resilience, and outreach.
- Sustainable Contra Costa, SLIA, 4CD, Rising Sun, Act Now Bay Area.



Bike to Wherever Day in Richmond.

# Community Engagement

## Reducing energy usage and increasing savings

- MCE is helping the County save energy and money through our Energy Management program.
- This partnership resulted in annual savings of:
  - 195,547 kWh and 11,272 therms in energy savings
  - \$26,000 in incentives distributed



Pittsburg Health Center site enrolled in Energy Management program.

# MCE Solar One

- Online in 2017
- One of the Bay Area's largest public-private solar partnerships
- Chevron remediated brownfield site
- 341 jobs supported
- 50% local hire requirement
- Partners: City of Richmond, sPower, Cenergy Power, Chevron, RichmondBUILD



**10.5MW**  
ground mounted  
solar in Richmond

# Virtual Power Plant

- 2022: MCE joins California Energy Commission grant to build a Virtual Power Plant (VPP) pilot in Richmond with a suite of customer-owned distributed energy resources (DERs) by 2025
- Rooftop solar, heat pump water heaters, smart thermostats, smart plugs, electric vehicles, batteries
- MCE can directly send digital signals to remotely shift & operate DERs for demand response and grid support; participants save money & get bill credits
- [mceCleanEnergy.org/virtual-power-plant](https://mceCleanEnergy.org/virtual-power-plant)



**Quiet, clean,  
invisible pockets  
of power**

# Get Involved



## Share upcoming workshops

Share information about MCE and [rebates and incentives](#) with your networks



## Invite us to community events

Upload community events [on our website](#)



## Connect us with organizations

Send a warm handoff to engagement@[mcecleanenergy.org](mailto:mcecleanenergy.org)

# The Power of MCE

**548K**

metric tons of  
GHGs eliminated  
since 2010

**95%**

carbon-free  
since 2022

**\$4.5B**

committed to  
building new  
renewable projects

**3.3M**

of labor hours  
supported

60% renewable  
since 2017,

**100%**

renewable option

**\$400M**

reinvested in MCE  
communities since  
2010

**46MW**

of new renewable  
projects built in our  
service area

**7,134**

jobs created



# Thank you!



[mceCleanEnergy.org](http://mceCleanEnergy.org)  
[info@mceCleanEnergy.org](mailto:info@mceCleanEnergy.org)

(888) 632-3674