

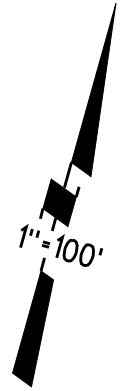
RO CANADA DEL HAMBRE

40

06

03

DIABLO VIEW ROAD



10

TO CO  
5849 1-31-58  
3.95Ac

090

02  
6.378Ac

08

PROJECT SITE

CDDP20-03005

NOTE: THIS MAP WAS PREPARED FOR ASSESSMENT PURPOSES ONLY. NO LIABILITY IS ASSUMED FOR THE ACCURACY OF THE INFORMATION DELINEATED HEREON. ASSESSOR'S PARCELS MAY NOT COMPLY WITH LOCAL LOT SPLIT OR BUILDING SITE ORDINANCES.

090

03  
8/17/11

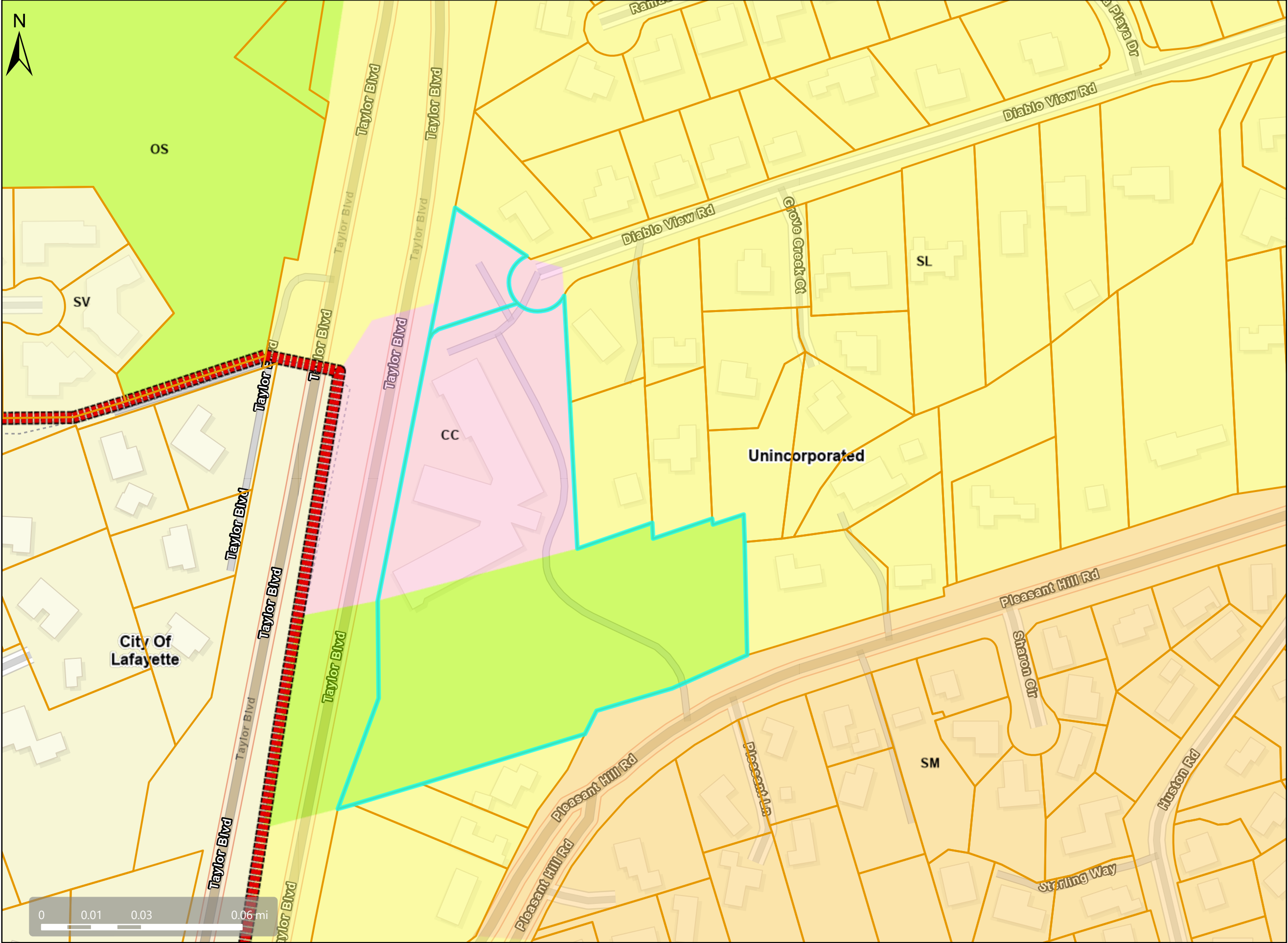
17

PLEASANT HILL ROAD

R-655



General Plan: OS, Open Space; CC, Congregate Care



Map Legend

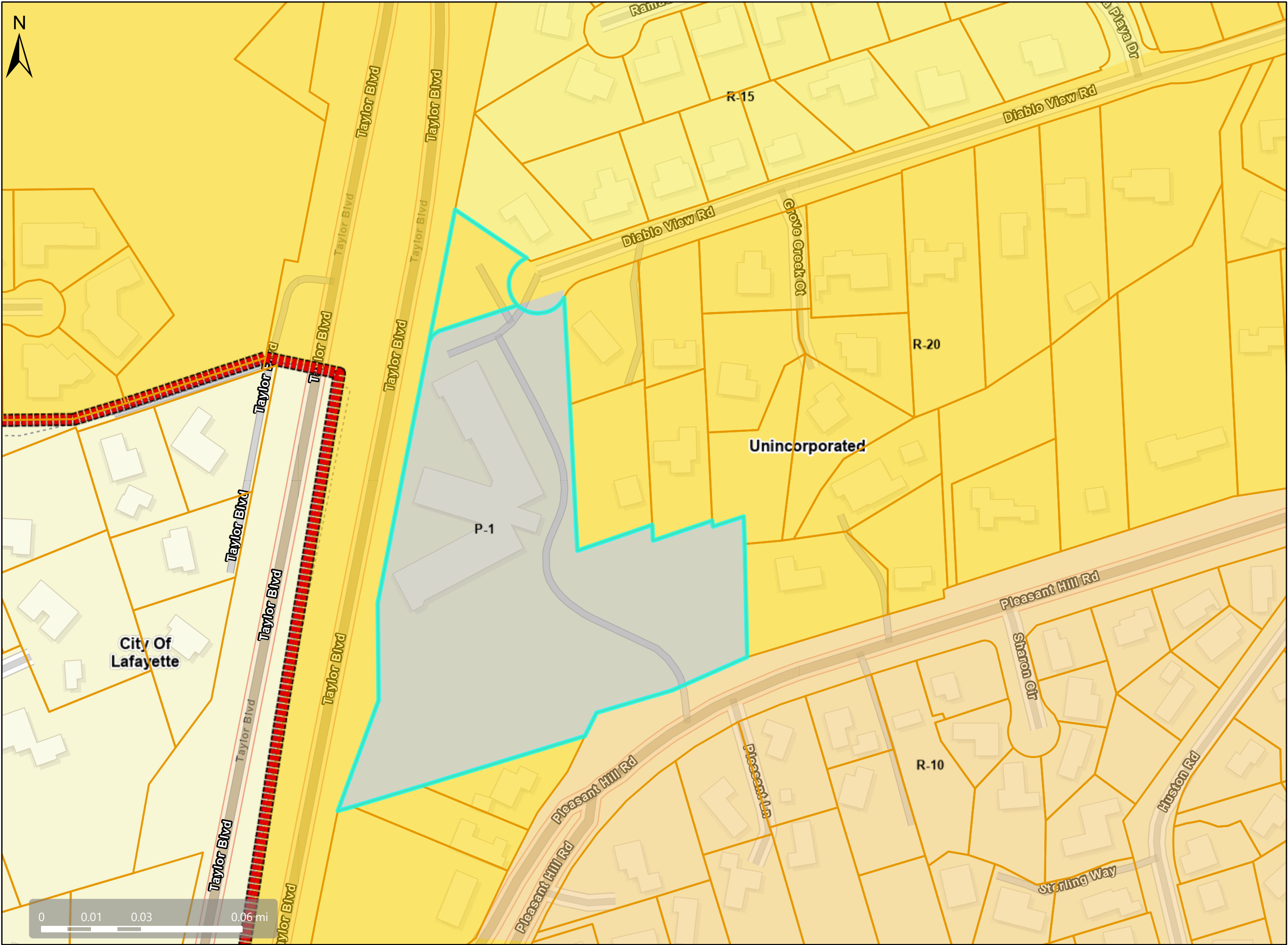
- Assessment Parcels
- General Plan
  - SV (Single Family Residential - Very Low) 0.2 - 0.9 Units per Net Acre
  - SL (Single Family Residential - Low) 1.0 - 2.9 Units per Net Acre
  - SM (Single Family Residential - Medium) 3.0 - 4.9 Units per Net Acre
  - CC (Congregate Care/Senior Housing)
  - OS (Open Space)
  - Unincorporated
  - City Limits



This map is a user generated, static output from an internet mapping application and is intended for reference use only. Data layers that appear on this map may or may not be accurate, current, or otherwise reliable. THIS MAP IS NOT TO BE USED FOR NAVIGATION. CCMap is maintained by Contra Costa County Department of Information Technology, County GIS. Data layers contained within the CCMap application are provided by various Contra Costa County Departments. Please direct all data inquiries to the appropriate department. Spatial Reference: PCS: WGS 1984 Web Mercator Auxiliary Sphere Datum: WGS 1984



Zoning: P-1



Map Legend

- Assessment Parcels
- Zoning
- ZONE\_OVER
  - R-10 (Single Family Residential)
  - R-15 (Single Family Residential)
  - R-20 (Single Family Residential)
  - P-1 (Planned Unit)
  - Unincorporated
  - City Limits



This map is a user generated, static output from an internet mapping application and is intended for reference use only.  
Data layers that appear on this map may or may not be accurate, current, or otherwise reliable.  
THIS MAP IS NOT TO BE USED FOR NAVIGATION.  
CCMap is maintained by Contra Costa County Department of Information Technology, County GIS.  
Data layers contained within the CCMap application are provided by various Contra Costa County Departments.  
Please direct all data inquiries to the appropriate department.  
Spatial Reference  
PCS: WGS 1984 Web Mercator Auxiliary Sphere  
Datum: WGS 1984





# Aerial View - Subject Property & Area



## Map Legend

- Assessment Parcels
- Unincorporated

City Limits

Aerials 2019

RGB

- Red: Band\_1
- Green: Band\_2
- Blue: Band\_3

**DOIT GIS**  
CONTRA COSTA COUNTY

This map is a user generated, static output from an internet mapping application and is intended for reference use only.  
Data layers that appear on this map may or may not be accurate, current, or otherwise reliable.  
THIS MAP IS NOT TO BE USED FOR NAVIGATION.  
CCMap is maintained by Contra Costa County Department of Information Technology, County GIS.  
Data layers contained within the CCMap application are provided by various Contra Costa County Departments.  
Please direct all data inquiries to the appropriate department.

Spatial Reference  
PCS: WGS 1984 Web Mercator Auxiliary Sphere  
Datum: WGS 1984





# Aerial View - Project Site



## Map Legend

- Assessment Parcels
- Unincorporated
- Address Points

Aerials 2019

RGB

- Red: Band\_1
- Green: Band\_2
- Blue: Band\_3

**DOIT GIS**  
CONTRA COSTA COUNTY

This map is a user generated, static output from an internet mapping application and is intended for reference use only.  
Data layers that appear on this map may or may not be accurate, current, or otherwise reliable.  
THIS MAP IS NOT TO BE USED FOR NAVIGATION.  
CCMap is maintained by Contra Costa County Department of Information Technology, County GIS.  
Data layers contained within the CCMap application are provided by various Contra Costa County Departments.  
Please direct all data inquiries to the appropriate department.  
Spatial Reference  
PCS: WGS 1984 Web Mercator Auxiliary Sphere  
Datum: WGS 1984