



Map Legend

- Assessment
- Parcels
- Unincorporated

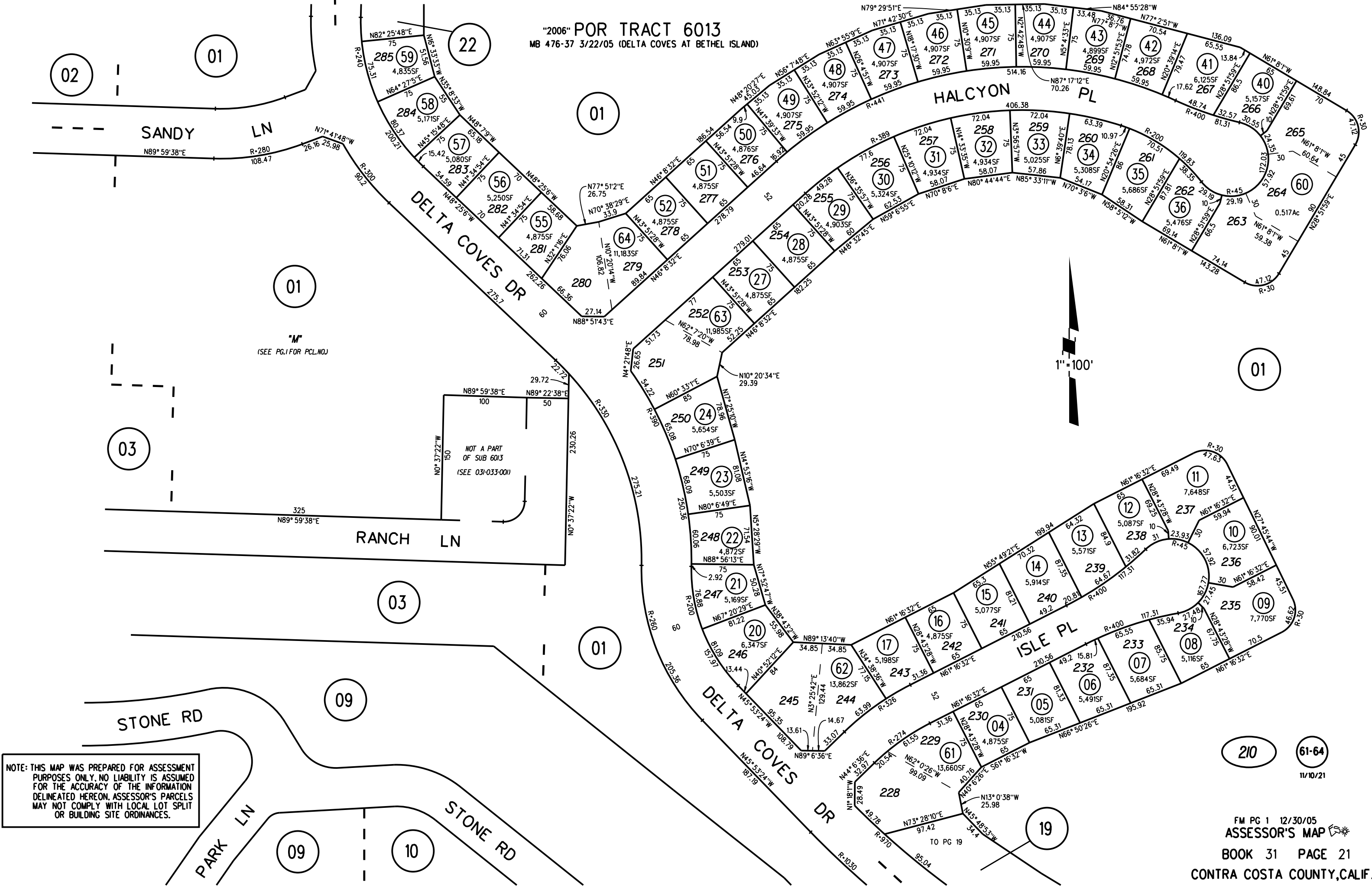
0 0 0.01 0.02 mi



This map is a user generated, static output from an internet mapping application and is intended for reference use only.  
Data layers that appear on this map may or may not be accurate, current, or otherwise reliable.  
THIS MAP IS NOT TO BE USED FOR NAVIGATION.  
CCMap is maintained by Contra Costa County Department of Information Technology, County GIS.  
Data layers contained within the CCMap application are provided by various Contra Costa County Departments.  
Please direct all data inquiries to the appropriate department.  
Spatial Reference  
PCS: WGS 1984 Web Mercator Auxiliary Sphere  
Datum: WGS 1984



"2006" POR TRACT 6013  
MB 476-37 3/22/05 (DELTA COVES AT BETHEL ISLAND)







GP



Map Legend

- Assessment Parcels
- General Plan
  - SL (Single Family Residential - Low) 1.0 - 2.9 Units per Net Acre
  - WA (Water)
- Unincorporated
- Board of Supervisors' Districts



This map is a user generated, static output from an internet mapping application and is intended for reference use only.  
Data layers that appear on this map may or may not be accurate, current, or otherwise reliable.  
THIS MAP IS NOT TO BE USED FOR NAVIGATION.  
CCMap is maintained by Contra Costa County Department of Information Technology, County GIS.  
Data layers contained within the CCMap application are provided by various Contra Costa County Departments.  
Please direct all data inquiries to the appropriate department.  
Spatial Reference  
PCS: WGS 1984 Web Mercator Auxiliary Sphere  
Datum: WGS 1984





# Zoning



## Map Legend

Assessment  
Parcels

### Zoning

#### ZONE\_OVER

P-1 -FH (Flood  
Hazard  
Combining  
District)

P-1 -FH -UE  
(Flood Hazard  
and Animal  
Exclusion)

Unincorporated

Board of  
Supervisors'  
Districts



This map is a user generated, static output from an internet mapping application and is intended for reference use only.  
Data layers that appear on this map may or may not be accurate, current, or otherwise reliable.  
THIS MAP IS NOT TO BE USED FOR NAVIGATION.  
CCMap is maintained by Contra Costa County Department of Information Technology, County GIS.  
Data layers contained within the CCMap application are provided by various Contra Costa County Departments.  
Please direct all data inquiries to the appropriate department.  
Spatial Reference  
PCS: WGS 1984 Web Mercator Auxiliary Sphere  
Datum: WGS 1984