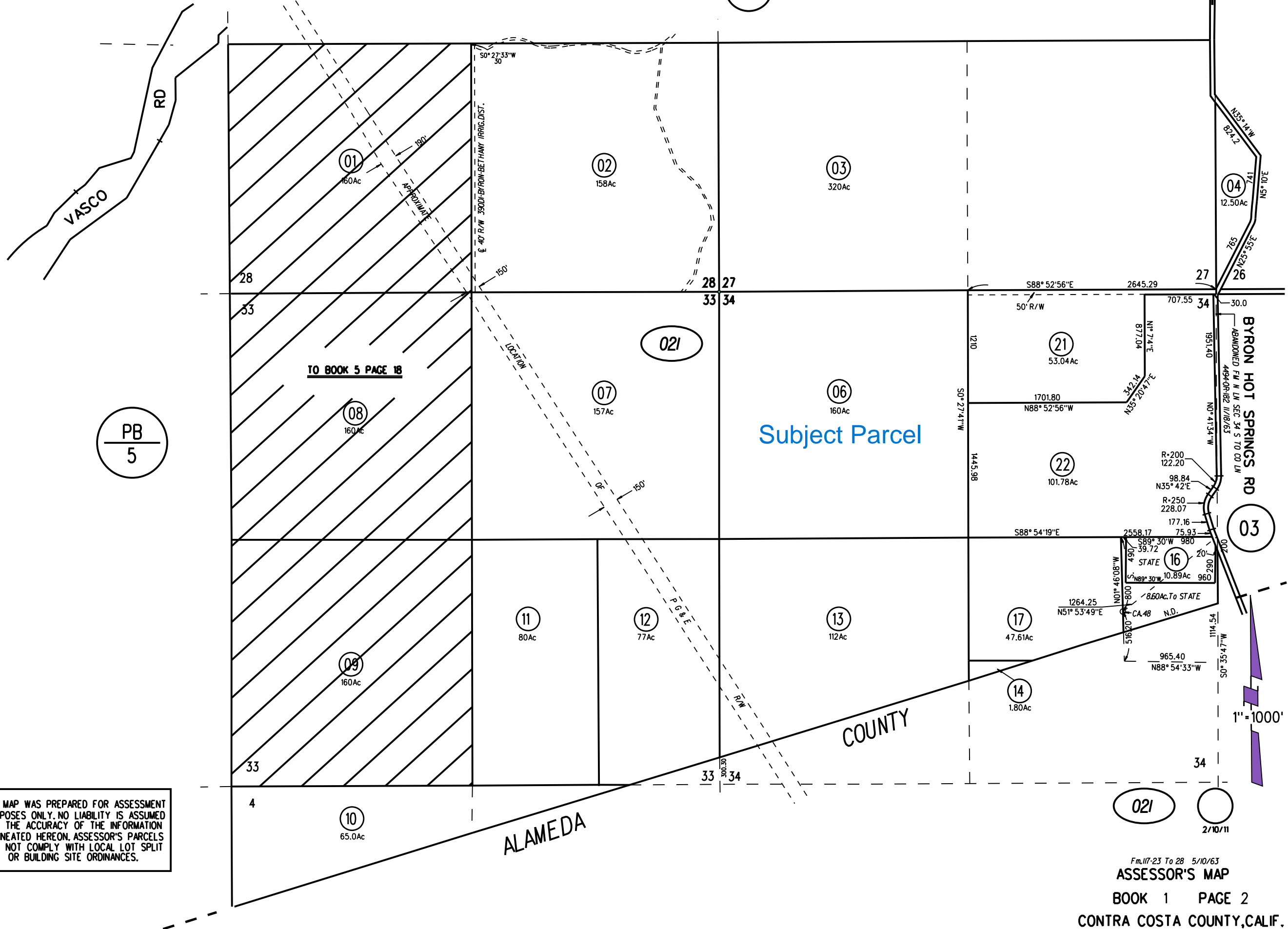


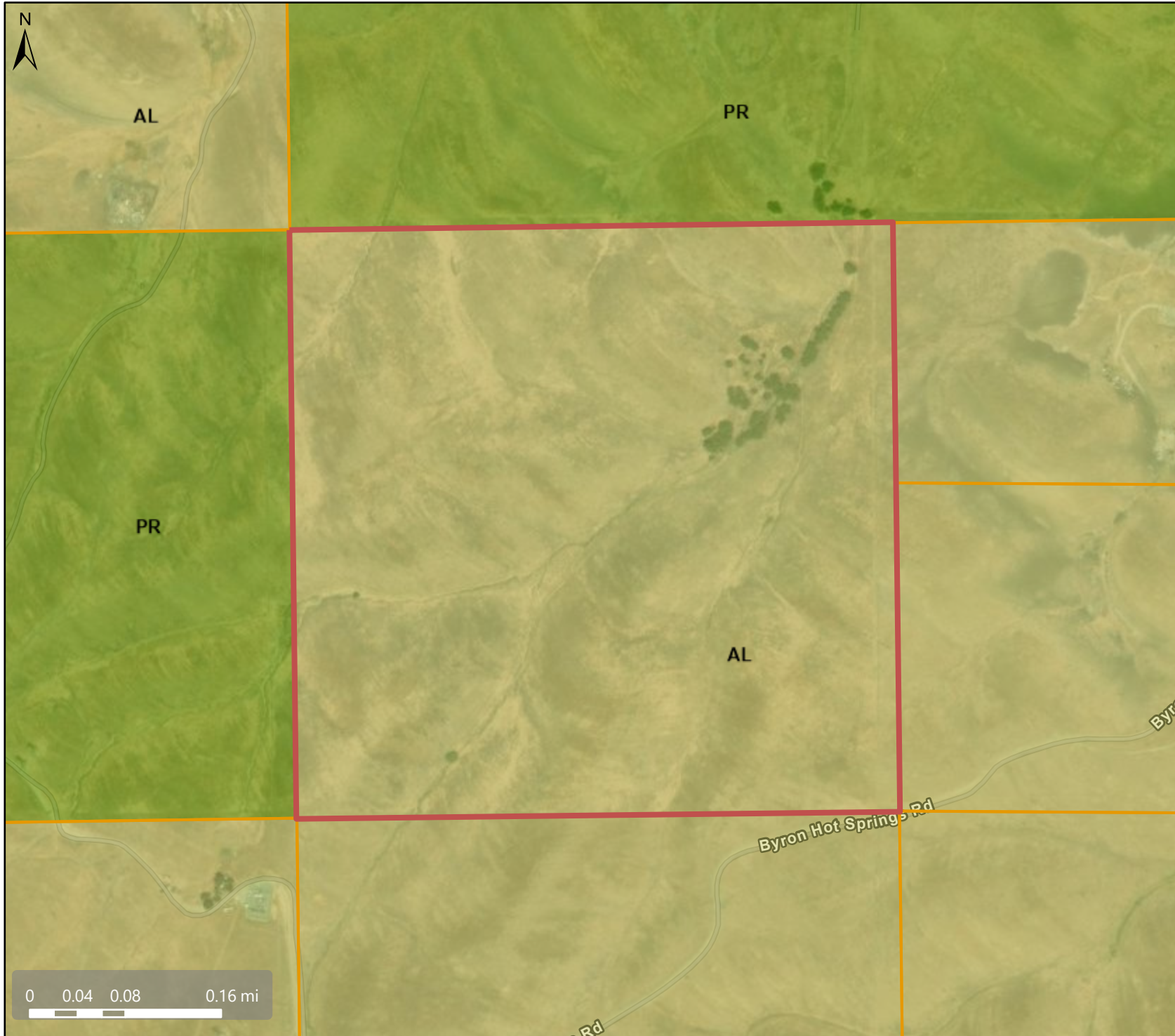
POR SEC's 26,27,28,33,34 T1S R3E MDB&M  
POR SEC 4 T2S R3E MDB&M

01



PB  
5

# General Plan - Agricultural Lands (AL)



## Map Legend

County Border

Override 1

Assessment  
Parcels

Planning Layers  
(DCD)

General Plan

PR (Park and  
Recreation)

AL (Agricultural  
Lands) (1 du/10  
ac) (1 du/20 ac  
in DPZ)

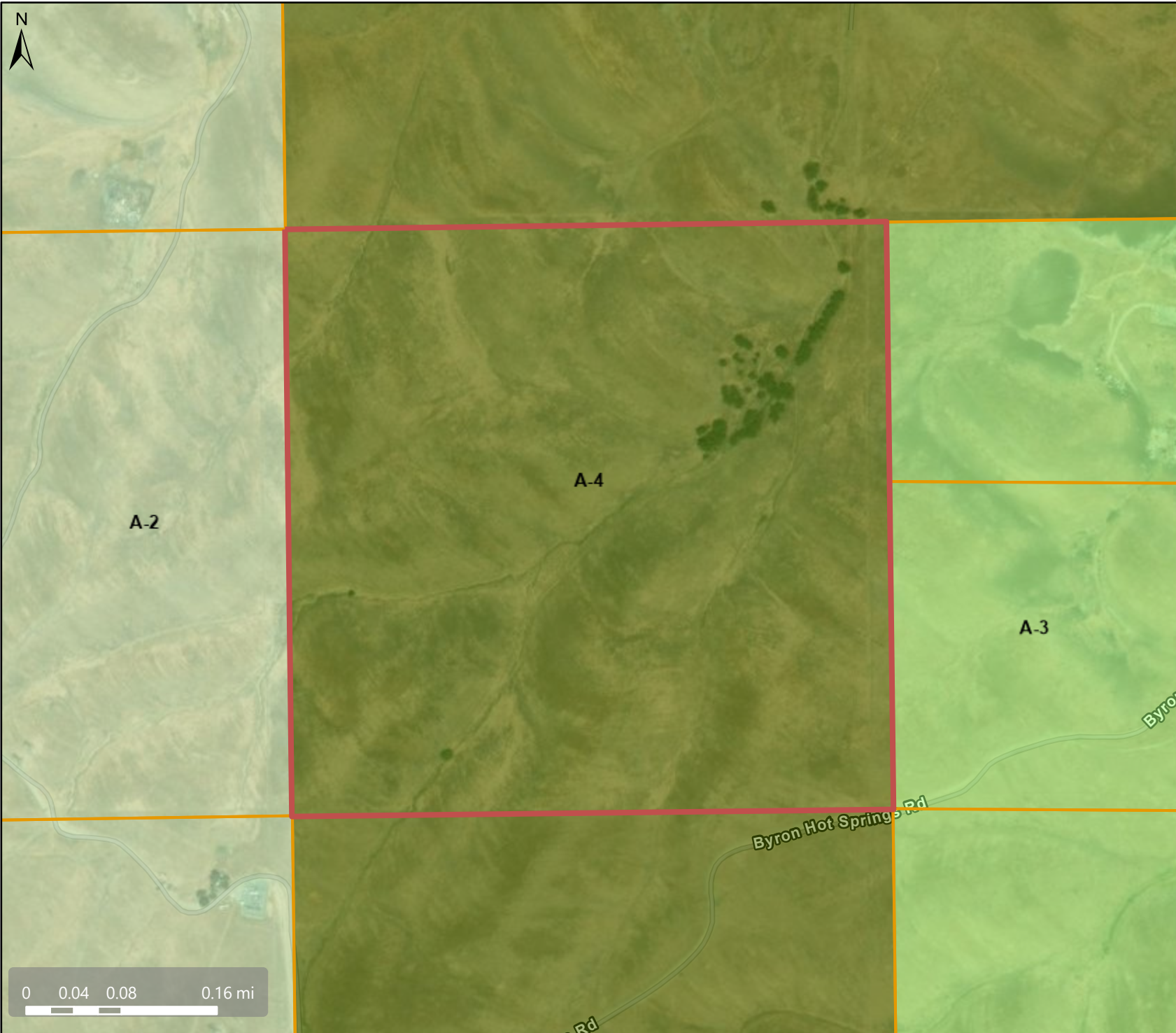
This map is a user generated, static output from an internet mapping application and is intended for reference use only. Data layers that appear on this map may or may not be accurate, current, or otherwise reliable.

THIS MAP IS NOT TO BE USED FOR NAVIGATION.  
CCMap is maintained by Contra Costa County  
Department of Information Technology, County GIS.  
Data layers contained within the CCMap application  
are provided by various Contra Costa County Departments.  
Please direct all data inquiries to the appropriate department.




Spatial Reference  
PCS: WGS 1984 Web Mercator Auxiliary Sphere  
Datum: WGS 1984



Zoning: Agricultural Preserve District (A-4)






## Map Legend

-  County Border  
 Override 1  
 Assessment  
 Parcels

## Planning Layers (DCD)

## Zoning

ZONE\_OVER

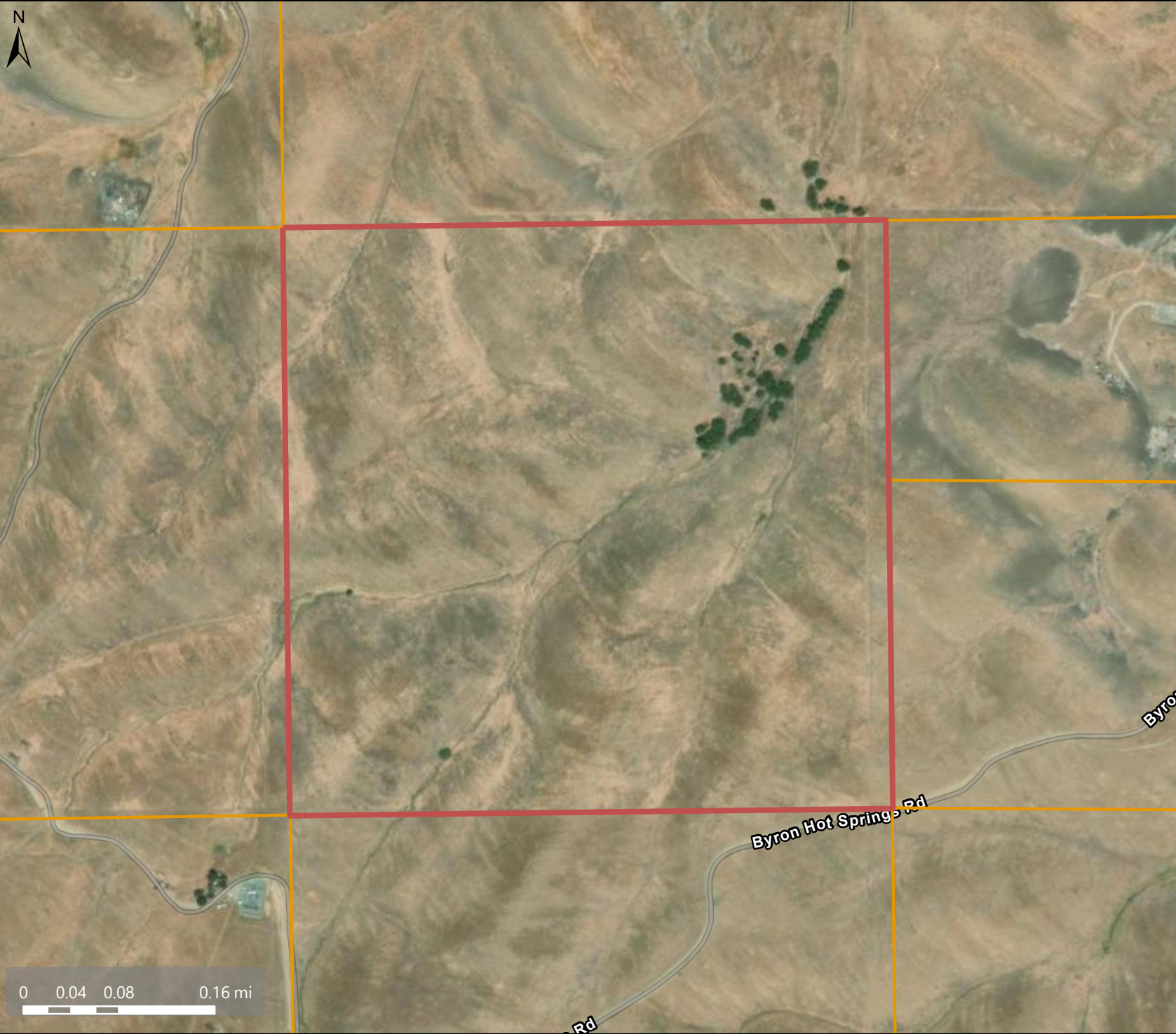
-  A-2 (General Agriculture)  
 A-3 (Heavy Agriculture)  
 A-4 (Agricultural Preserve)

This map is a user generated, static output from an internet mapping application and is intended for reference use only. Data layers that appear on this map may or may not be accurate, current, or otherwise reliable.




THIS MAP IS NOT TO BE USED FOR NAVIGATION.  
CCMap is maintained by Contra Costa County  
Department of Information Technology, County GIS.  
Data layers contained within the CCMap application  
are provided by various Contra Costa County Departments.  
Please direct all data inquiries to the appropriate departments.

Spatial Reference  
PCS: WGS 1984 Web Mercator Auxiliary Sphere  
Datum: WGS 1984

Aerial Photo



**Map Legend**

-  County Border
-  Override 1
-  Assessment Parcels

This map is a user generated, static output from an internet mapping application and is intended for reference use only. Data layers that appear on this map may or may not be accurate, current, or otherwise reliable.

THIS MAP IS NOT TO BE USED FOR NAVIGATION.

CCMap is maintained by Contra Costa County Department of Information Technology, County GIS. Data layers contained within the CCMap application are provided by various Contra Costa County Departments. Please direct all data inquiries to the appropriate department.

**Spatial Reference**  
PCS: WGS 1984 Web Mercator Auxiliary Sphere  
Datum: WGS 1984