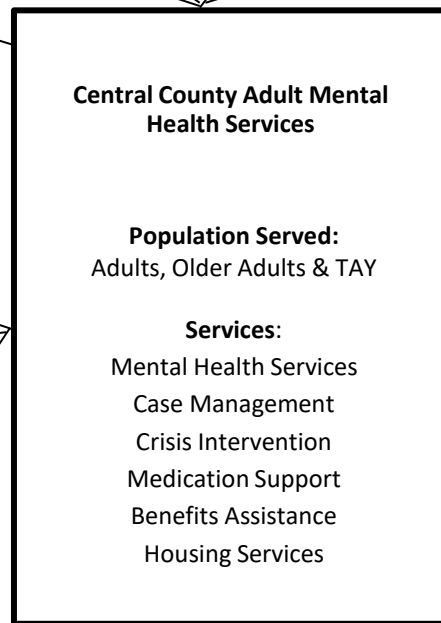


Central County Adult Mental Health Services



Forensic Services

Transition Services

Vocational Services

Conservatorship/Guardianship

Older Adult Services

Housing Support Services

Peer Operated Services
Connections House

Individual and Group Private Practitioners
The provider network is comprised of individual & group providers consisting of MDs, NPs, LMFTs, LCSWs, & LPCCs.

Residential Services/Social Rehabilitation
The Pathway (Adult Residential)
Hope House (Crisis Residential)

Don Brown Shelter
(Antioch)
Available to all County Adult Behavioral Health Clients

Prevention & Early Intervention Programs

- Child Abuse Prevention Council (Concord)
- Contra Costa Crisis Center (Walnut Creek)
- Center for Human Development (Pleasant Hill)
- C.O.P.E. Family Support Center (Concord)
- Hope Solutions (Walnut Creek)
- Jewish Family & Children's Svcs (Walnut Creek)
- La Clinica de la Raza (Concord)
- Rainbow Community Center (Concord)
- STAND! (Concord)

Community Based Organizations

- Portia Bell Hume Behavioral Health and Training Center
- Rainbow Community Center
- Telecare Corporation

Community Defined Practice Contractors

- Early Childhood MH Program
- La Concordia
- La Clinica
- International Rescue Committee
- NAMI CC

Long-term Care Providers (IMD/MHRC/STF/STP):
Idylwood, Telecare (4 sites), Canyon Manor, Crestwood (11 sites), CPT
All out of county facilities

MHSA Housing
Master leased and scattered sites (184 Units)

Contracted Hospitals
John Muir BH; BHC Sierra Vista; BHC Heritage Oaks; BHC Fremont Hospital; San Jose BH

Augmented Board and Care Homes

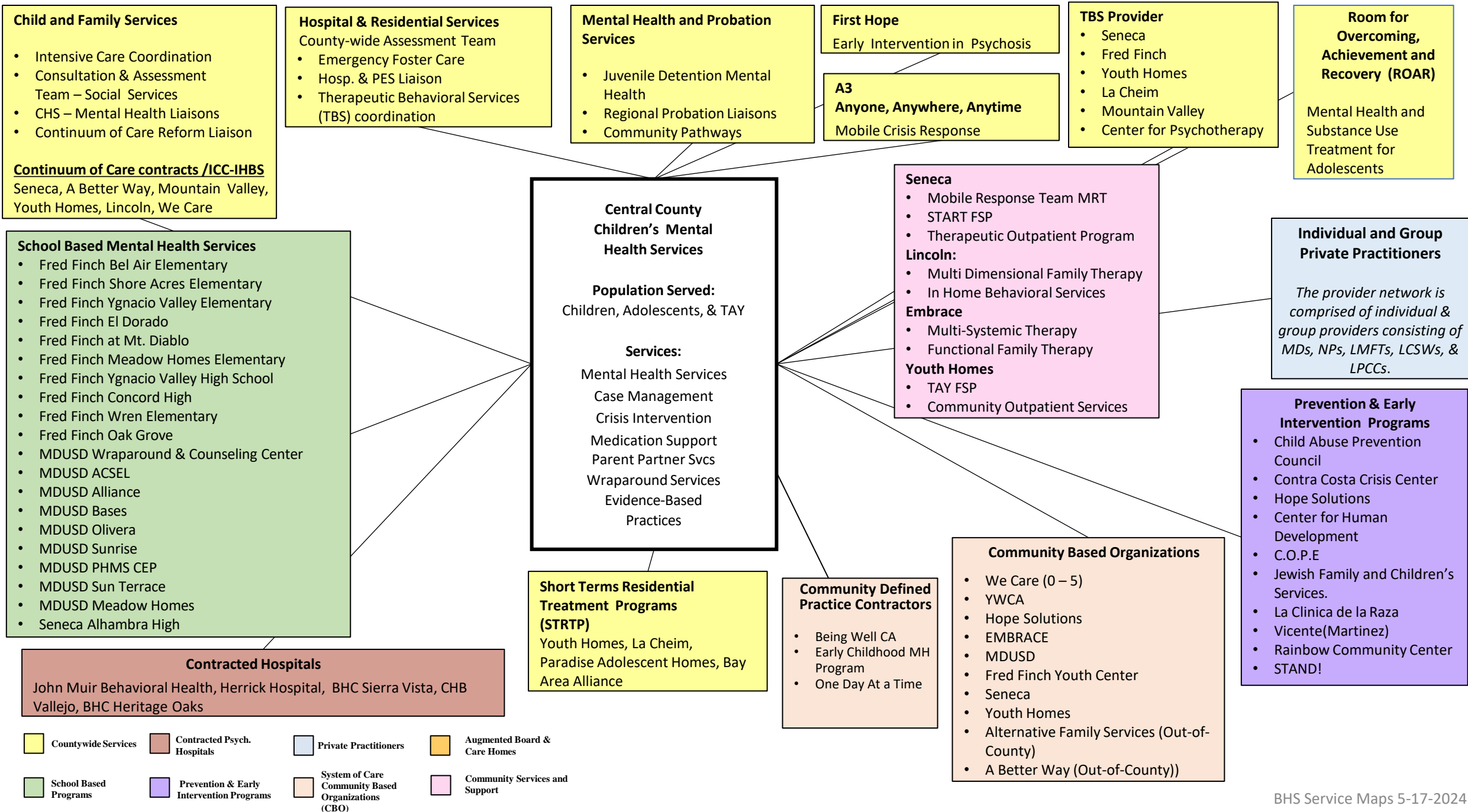
- Care for One (Concord)
- Concord Royale (Concord)
- Crestwood Hope Center (Vallejo)
- Crestwood Our House (Vallejo)
- Crestwood The Bridge (Pleasant Hill)
- Gine's Residential Care Home II (Alamo)
- JVTCM- Camino Ramon Home for Seniors (Danville)
- JVTCM- Harmony House (Walnut Creek)
- JVTCM- Ramona Care Home (Pleasant Hill)
- Pleasant Hill Oasis (Pleasant Hill)
- Psynergy (5 sites – out-of-county)
- Williams Board and Care Home (Vallejo)
- Woodhaven (Concord)

** All Board and Care Programs are available for all beneficiaries*

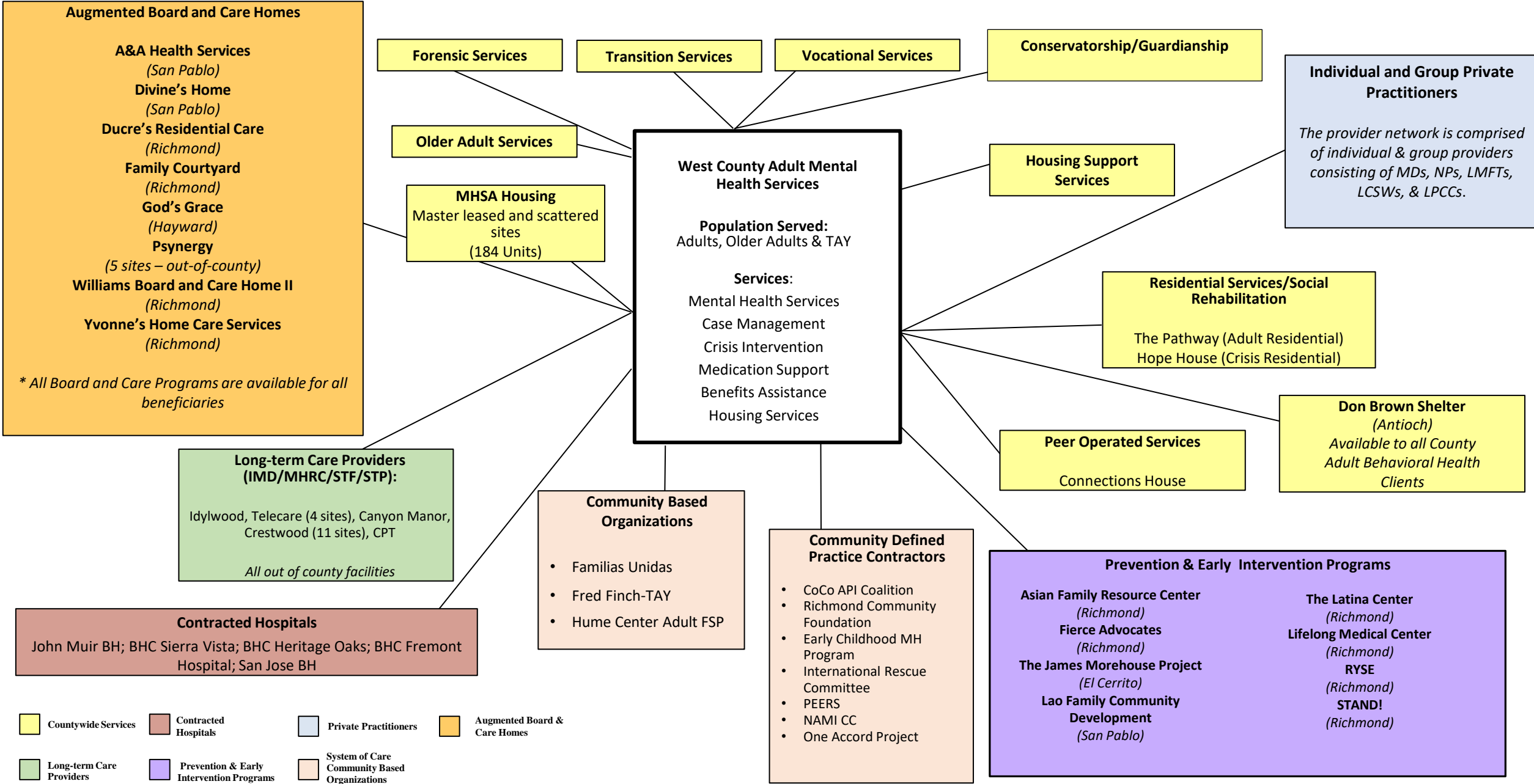


Central County Children's Mental Health Services

BHS BH Services 10-24-2023

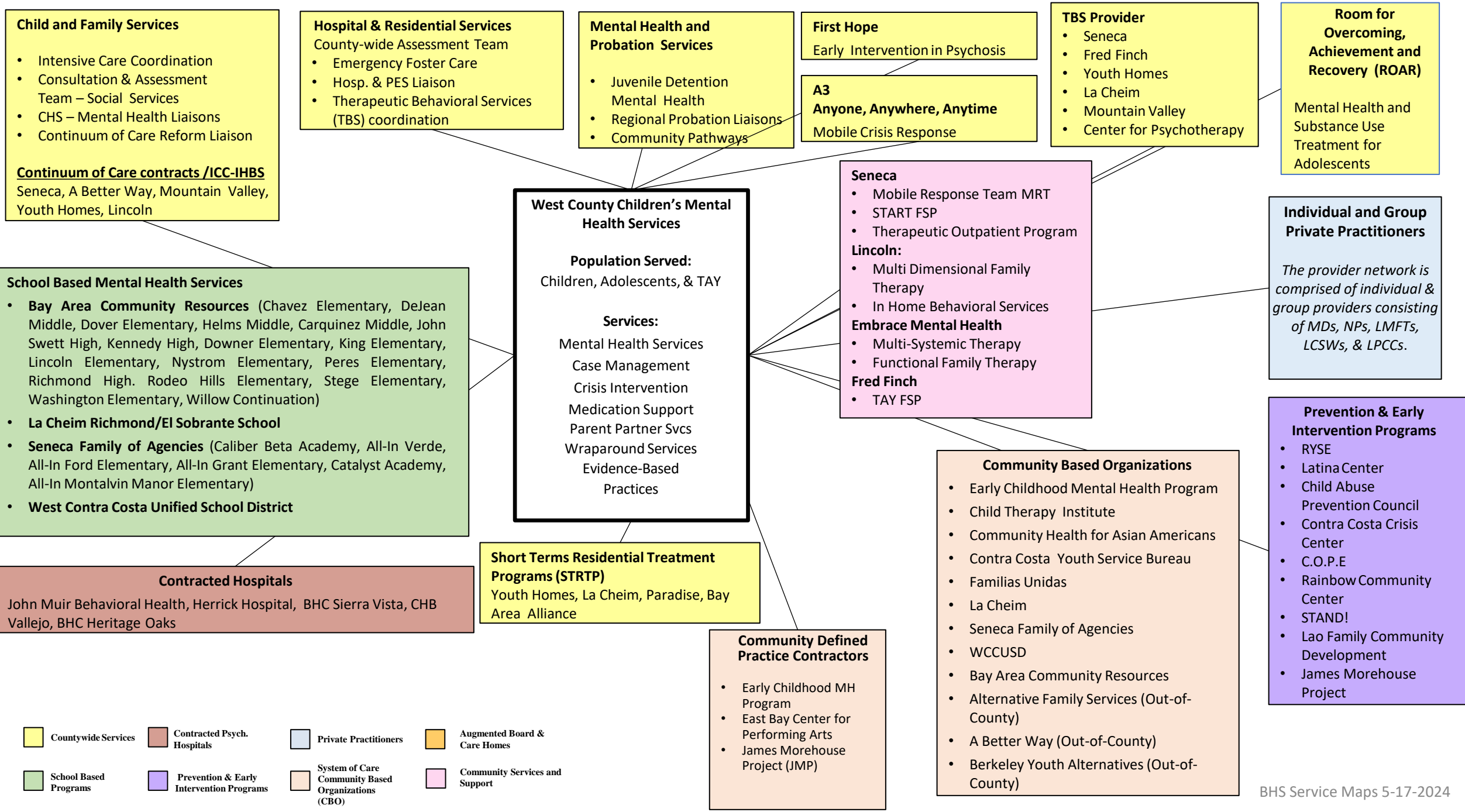


West County Adult Mental Health Services

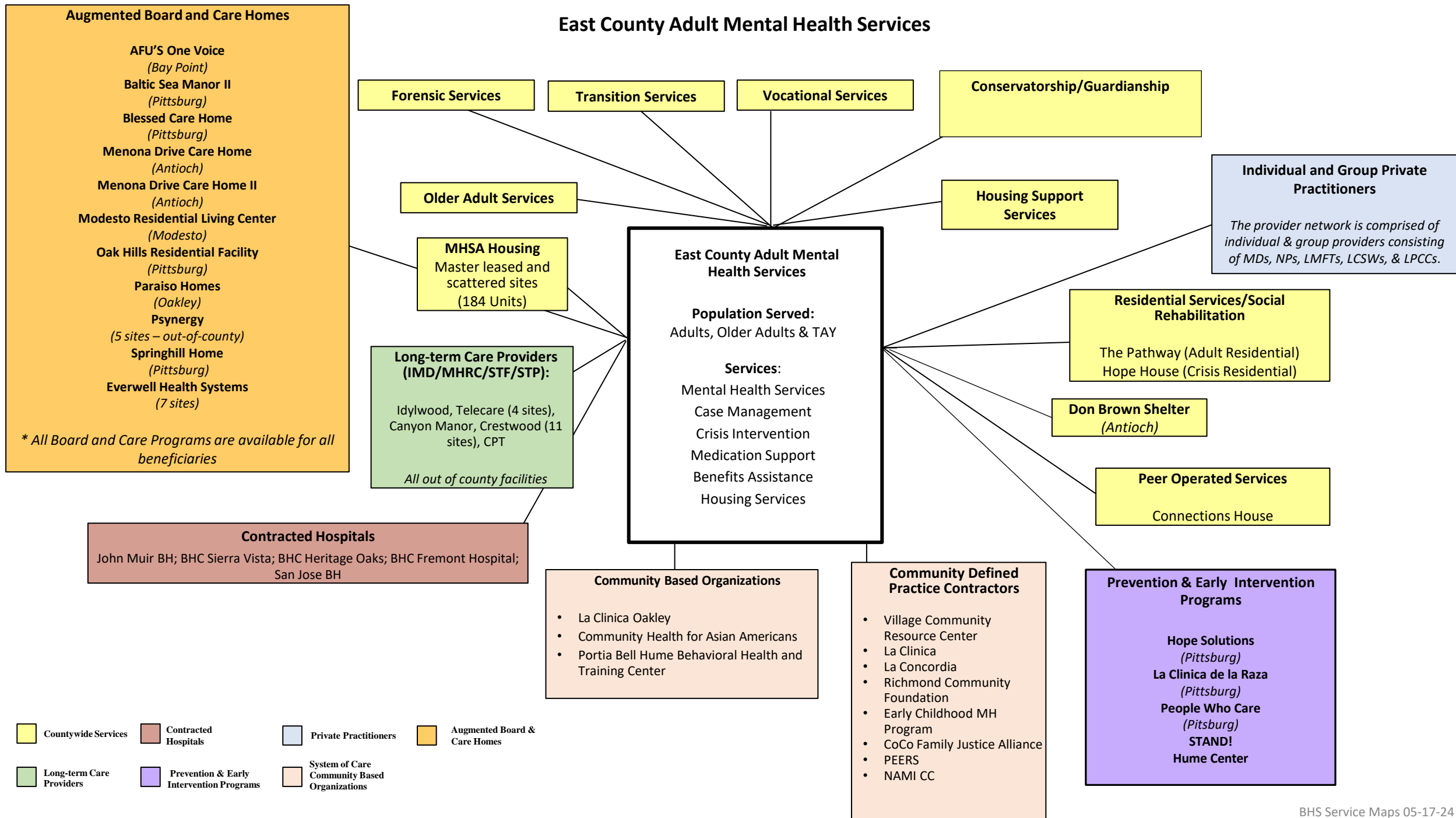


West County Children's Mental Health Services

BHS BH Services 10-24-2023

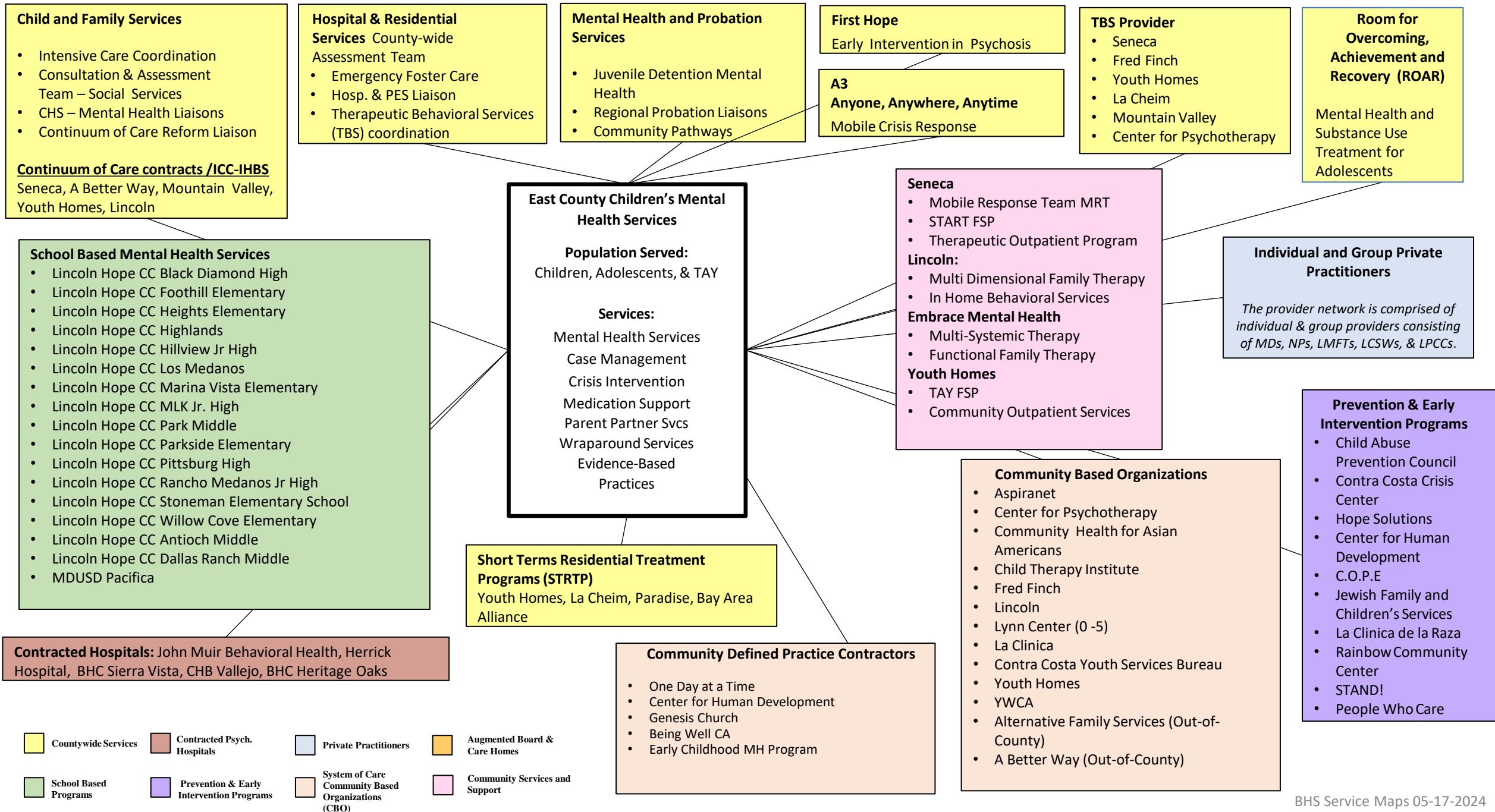


East County Adult Mental Health Services



East County Children's Mental Health Services

BHS BH Services 10-24-2023



BHS Service Maps 05-17-2024