

A satellite-style map of the San Francisco Bay Area serves as the background for the slide. It shows the bay, surrounding cities, and the rugged terrain of the mountains. The map is oriented vertically, with the bay on the left side of the frame.

Regional Shoreline Adaptation Plan

An implementing project of **BAY ADAPT**

Contra Costa County Sea Level Rise Ad Hoc Committee

February 21, 2024

WHY DO WE NEED THE RSAP?

The RSAP is BCDC's way of meeting SB 272 requirements and positioning the region to advance adaptation planning and projects

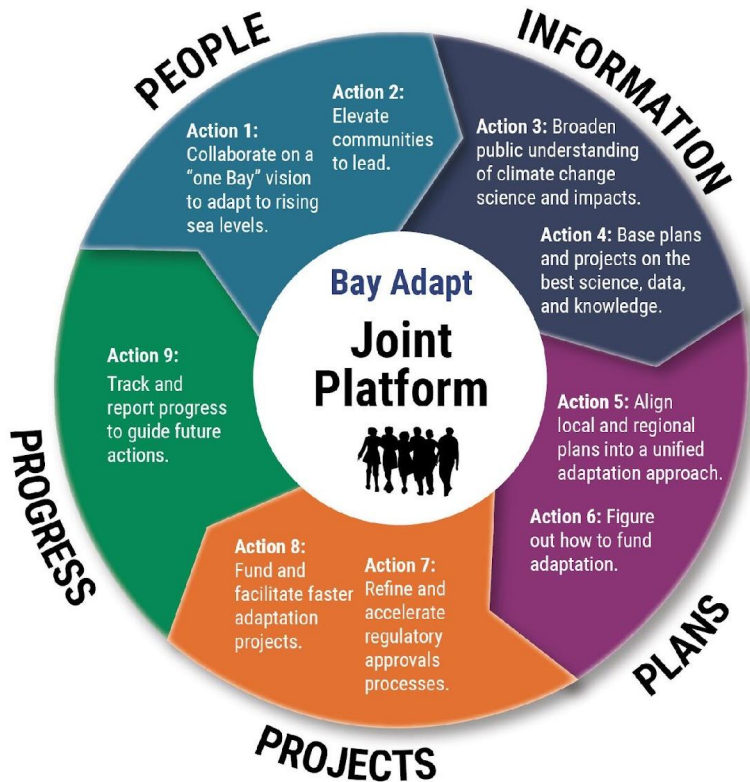
- **Coordinated** adaptation
- Priority resources to **frontline communities**
- Long-term **health of wetlands**
- **Strategic** implementation
- Common **standards and methods**
- Advance priority **projects and funding**
- Track and **measure progress**



**Regional Shoreline
Adaptation Plan**

An implementing project of **BAY ADAPT**

THE RSAP IS IMPLEMENTING BAY ADAPT



- Action 1. Collaborate on a "One Bay" vision to adapt to rising sea levels.
- Action 5. Align local and regional plans into a unified adaptation approach.
- Action 8. Fund and facilitate faster adaptation projects.
- Action 9. Track and report progress to guide future actions.

GUIDING PRINCIPLES



Support socially vulnerable communities



Put nature first whenever possible



Solve interconnected problems at the same time



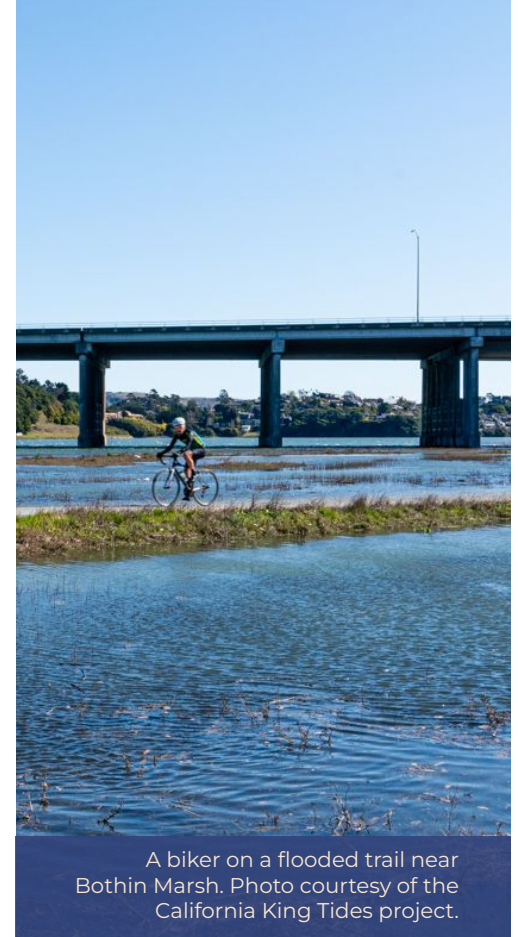
Practice inclusive, community-led governance and decision making



Support existing efforts but plan for the long term



Pick the right strategy for the right time at the right place

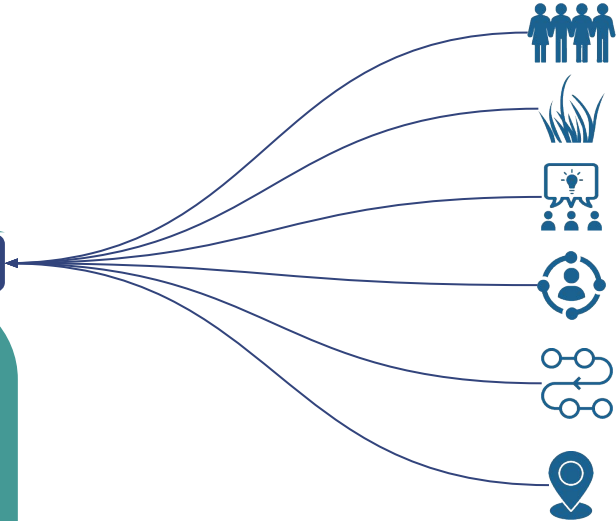


WHAT IS THE ONE BAY VISION?

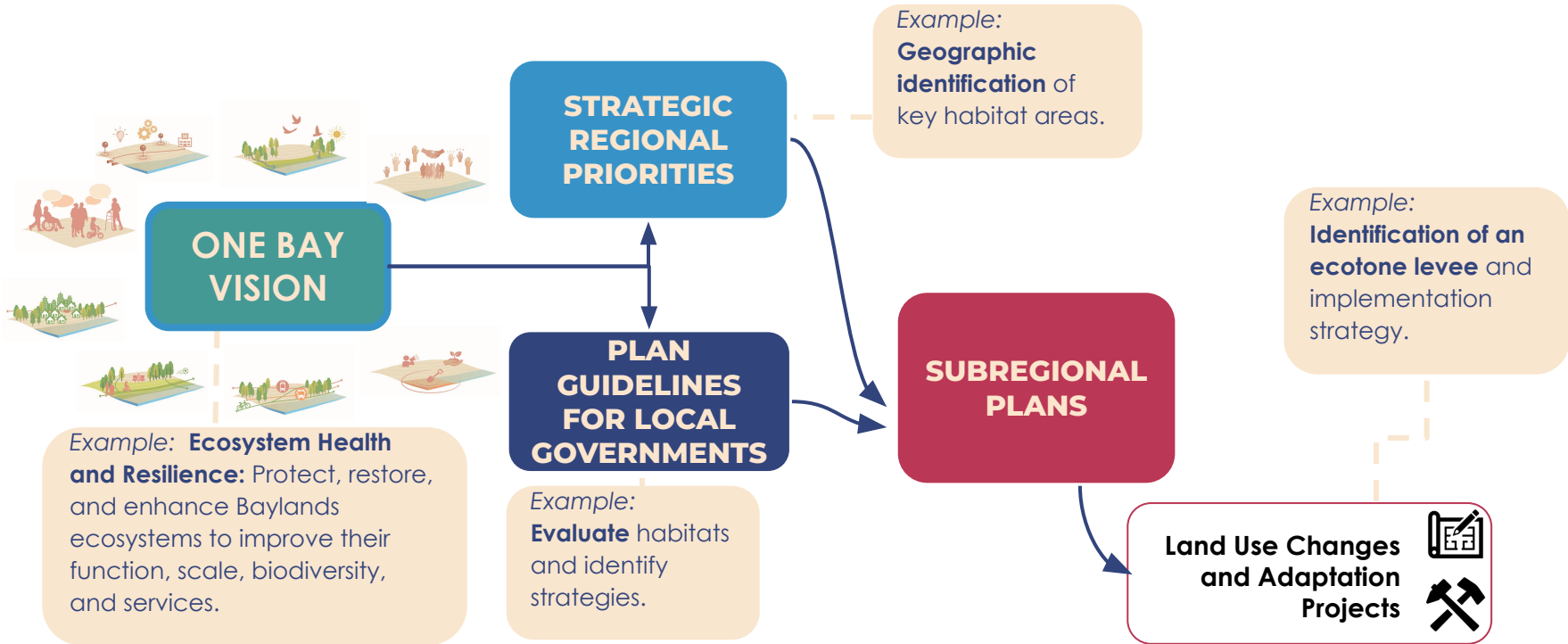


BAY ADAPT GUIDING PRINCIPLES

Describes what **successful shoreline adaptation will look like** in the face of rising sea level, and guides the development of strategic regional priorities and local planning guidelines.

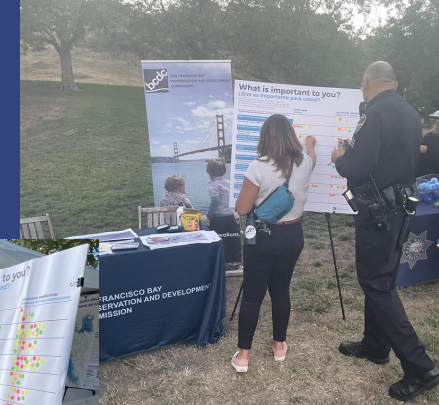


HOW WILL THE VISION INFORM ADAPTATION?



HOW WAS THE VISION DEVELOPED?

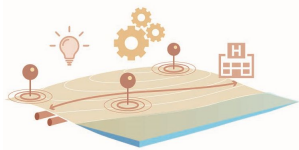
- Building upon existing regional plans and efforts
- > 500 people shared with us their values and visions for the future of the shoreline
 - 10 events
 - Public Workshop
 - Expert Advisory Group
 - Online survey



One Bay Vision
for A Resilient Future
Shoreline



**a. COMMUNITY
HEALTH &
WELLBEING**



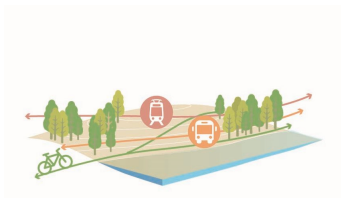
**b. CRITICAL
INFRASTRUCTURE
& SERVICES**



**c. ECOSYSTEM
HEALTH &
RESILIENCE**



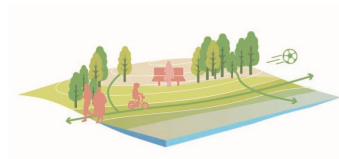
**d. GOVERNANCE,
COLLABORATION
& FINANCE**



**h. TRANSPORTATION
& TRANSIT**



**g. SHORELINE
CONTAMINATION**



**f. PUBLIC ACCESS
& RECREATION**



**e. HOUSING,
DEVELOPMENT &
LAND USE**

ONE BAY VISION

QUESTIONS TO KEEP IN MIND

- **What do you like most about the One Bay Vision?**
- **Is there anything missing or unclear?**
- **Are you in favor of using this draft One Bay Vision as the basis for our next steps?**

One Bay Vision for A Resilient Future Shoreline

As sea levels rise, the Bay Area's diverse communities come together to transform how we live, work, plan, and adapt along our changing shorelines.

In this future, communities are **healthy, safe**, and have greater **access** to the shoreline where they can feel connected to the Bay's edge and experience the beauty and wonder of thriving **habitats** that sustain our quality of life. Our region remains **connected** so that networks of people and goods can move with ease and get to the **places** they need to go. The **services** we rely upon keep our communities and economies running and are designed for the long-term. Achieving this future will require **governments**, the **private sector**, and **communities** to make a commitment to equity, address past harms, and take on complex, interrelated challenges together. A resilient future for the San Francisco Bay Area starts now and continues for generations to come.



As sea levels rise...

a. Communities are healthy and vibrant.

To achieve this:

- Adapt Bay Area communities to safeguard all from the public health consequences of flooding and support healthy environments, public safety, and quality of life.
- Meaningfully engage and empower communities in adaptation decision-making processes, including language access.
- Address risks to essential community assets, services, and cultural resources.
- Prioritize economic opportunities from adaptation in disadvantaged communities through local hire, workforce development, and other community benefits.



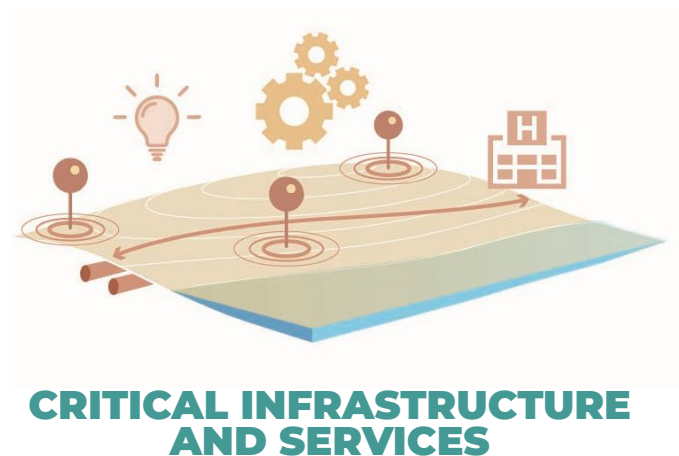
COMMUNITY HEALTH & WELLBEING

As sea levels rise...

b. Critical services are reliable.

To achieve this:

- Adapt existing local and regional critical infrastructure systems to maintain or improve service continuity for everyone, while minimizing vulnerabilities of new infrastructure networks to future flooding hazards.
- Integrate flooding hazards into emergency management services planning and operations.
- Prioritize adaptations that address service deficiencies in underserved communities.



As sea levels rise...

c. Healthy Baylands ecosystems thrive.

To achieve this:

- Protect, restore, and enhance Baylands ecosystems to improve their function, scale, biodiversity, and services.
- Prioritize nature-based solutions where possible and incorporate habitat connectivity, sediment management, and whole watershed approaches into shoreline planning and projects.
- Identify and facilitate opportunities for ecosystems to migrate landward to support and enhance natural adaptation processes.



ECOSYSTEM HEALTH & RESILIENCE

As sea levels rise...

d. Regional collaboration drives efficient and effective adaptation.

To achieve this:

- Ensure local and regional governments collaborate to address shared flood risk, identify multi-benefit adaptation opportunities, and avoid adverse flooding impacts to other jurisdictions.
- Identify and engage with Indigenous partners when planning, implementing, and managing shoreline adaptation projects.
- Support formal and informal multi-stakeholder collaborations equipped to effectively plan, fund, implement, maintain, and adaptively manage adaptation strategies over time.
- Improve funding and regulatory processes to expedite innovative and transformative adaptation projects with regional benefits.



**GOVERNANCE,
COLLABORATION &
FINANCE**

As sea levels rise...

e. Places are designed for a changing shoreline.

To achieve this:

- Adapt existing development equitably and plan new and re-development projects to ensure community safety, equity, and Bay ecological health.
- Align land use planning with risk mitigation while considering long term economic vitality for all.
- Support the region in creating affordable housing and meeting state-mandated housing goals while preserving public trust uses of the Bay and reducing populations at risk of flooding.



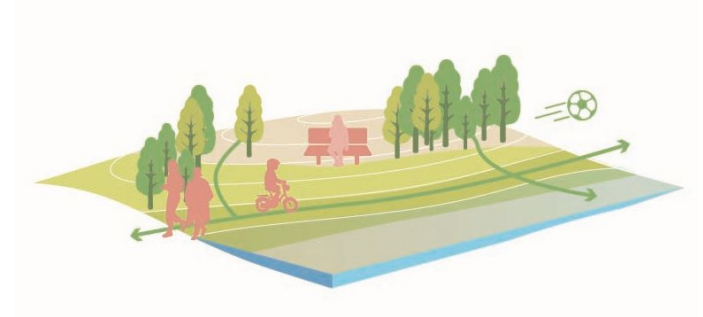
HOUSING, DEVELOPMENT & LAND USE

As sea levels rise...

f. The Bay shoreline is accessible to all.

To achieve this:

- Expand and improve diverse shoreline public access, such as recreation opportunities and water-dependent or culturally significant waterfront uses, through adaptation.
- Prioritize connecting disadvantaged neighborhoods to a healthy Bay, creating equitable access for diverse communities.
- Balance the needs for human enjoyment, sustenance, and cultural connection to the Bay with healthy ecosystems.



PUBLIC ACCESS & RECREATION

As sea levels rise...

g. People and ecosystems are safe from contamination risks.

To achieve this:

- Collaborate with communities, scientists, industries, and government agencies to identify, adapt, and remediate contaminated shoreline sites.
- Prioritize remediation of contaminated sites in Environmental Justice communities, while minimizing transferring contamination burden.
- Integrate emerging science on shallow groundwater rise into planning and adaptation decisions.



SHORELINE CONTAMINATION

As sea levels rise...

h. Safe and reliable transportation connects the region.

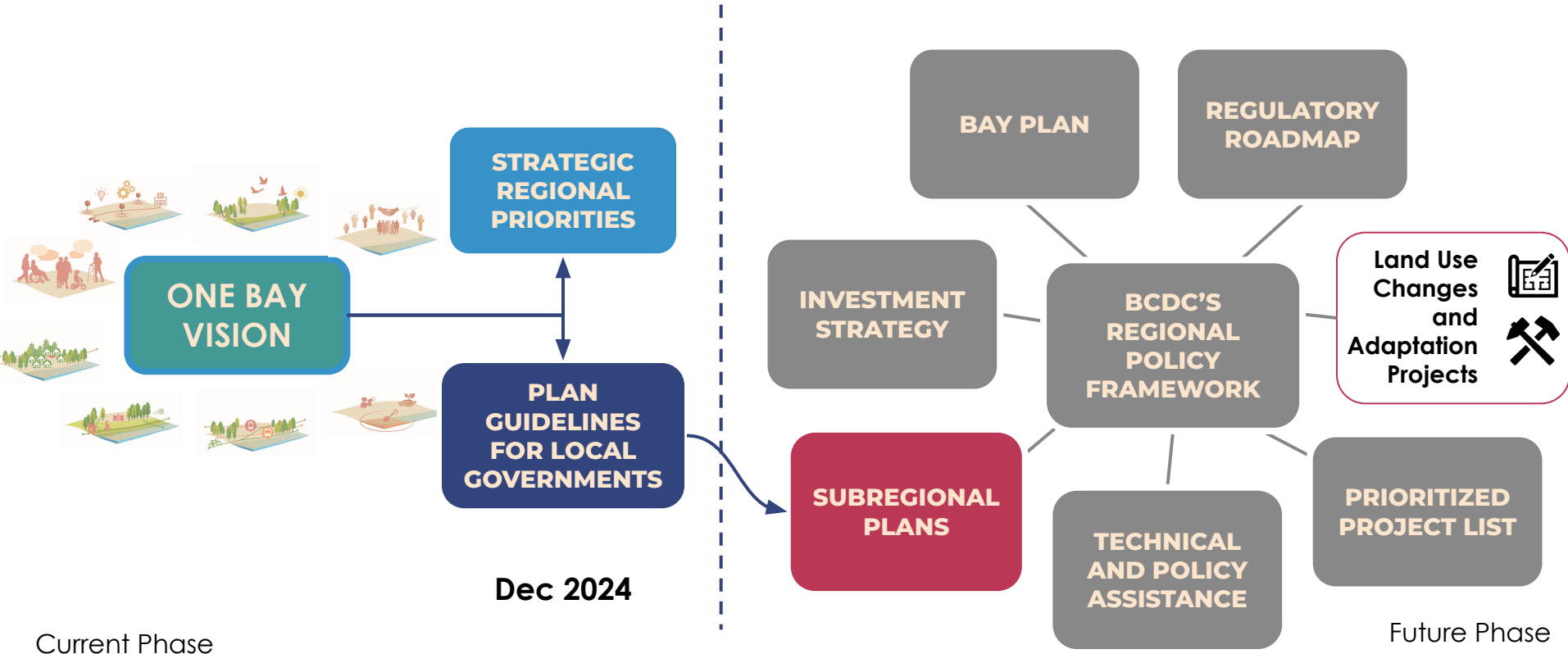
To achieve this:

- Adapt local and regional transportation systems to ensure safe and reliable connectivity by air, land, and water.
- Ensure continuity and equitable service in transit dependent communities.
- Identify and integrate multi-benefit opportunities, such as improving ecological health, increasing green infrastructure, and expanding public access, with transportation projects.
- Promote active, low emissions mobility options for environmental and economic benefit.



TRANSPORTATION & TRANSIT

HOW CAN WE MAKE THE VISION A REGIONAL REALITY?



NEXT STEPS

- Transition to **developing guidelines** and **strategic priorities**
- The RSAP is **defining subregional plans** with practitioners and stakeholders through upcoming focus groups in February/March 2024
- **Hosting a second Public Workshop in spring** on guidelines and strategic priorities
- **Planning for spring local workshops** in up to five communities with Community-Based Organization partners
- **Elected Official engagement**



THANK YOU!

Jaclyn Mandoske

Senior Climate Adaptation Planner
Bay Conservation and Development Commission
Jaclyn.mandoske@bcdc.ca.gov

