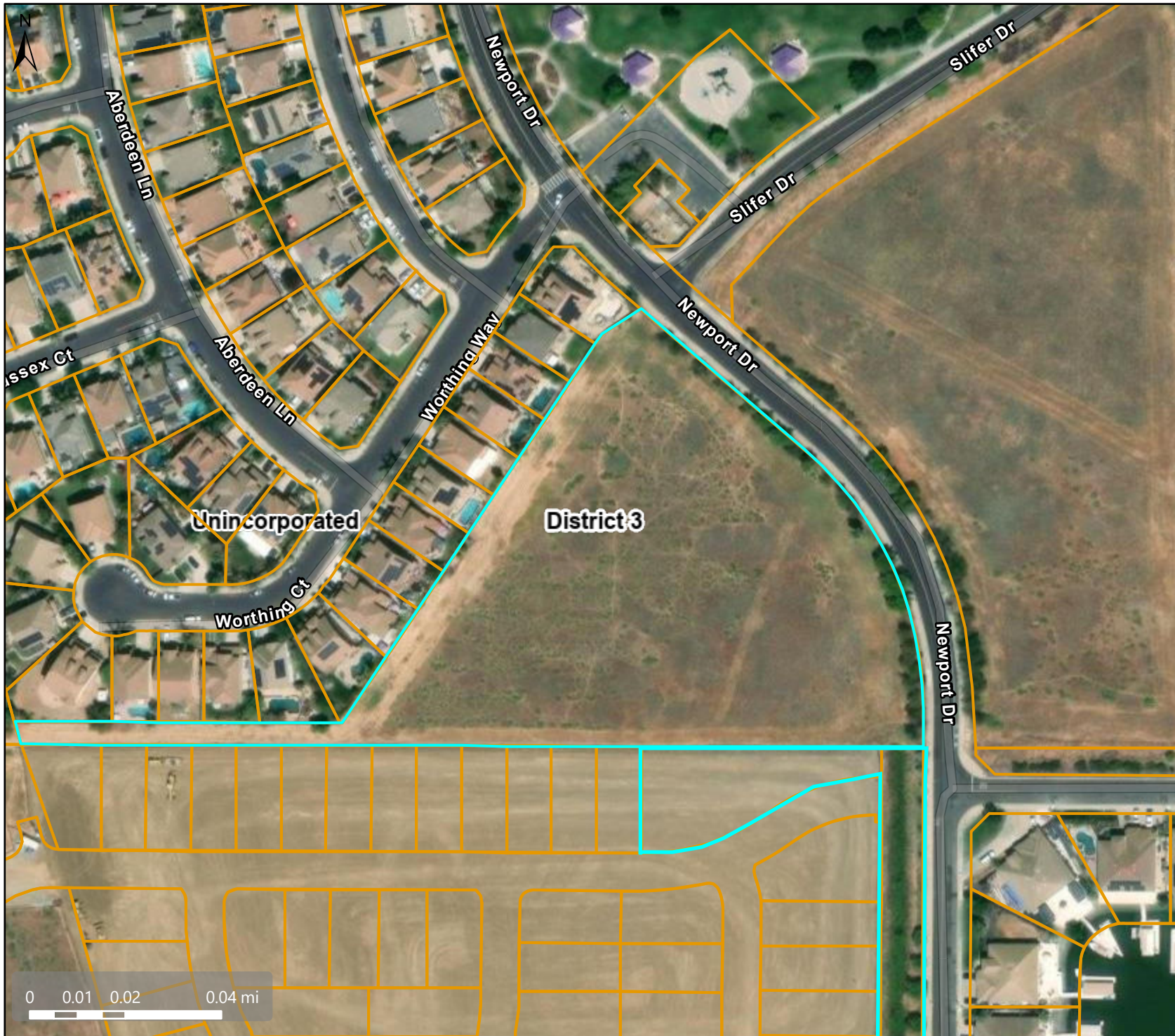


CDDP24-03053_Aerial Map



Map Legend

- Assessment Parcels
- Planning Layers (DCD)
 - Unincorporated
 - Board of Supervisors' Districts

This map is a user generated, static output from an internet mapping application and is intended for reference use only. Data layers that appear on this map may or may not be accurate, current, or otherwise reliable. THIS MAP IS NOT TO BE USED FOR NAVIGATION. CCMMap is maintained by Contra Costa County Department of Information Technology, County GIS. Data layers contained within the CCMMap application are provided by various Contra Costa County Departments. Please direct all data inquires to the appropriate department.

Spatial Reference
PCS: WGS 1984 Web Mercator Auxiliary Sphere
Datum: WGS 1984

CDDP24-03053_General Plan Map



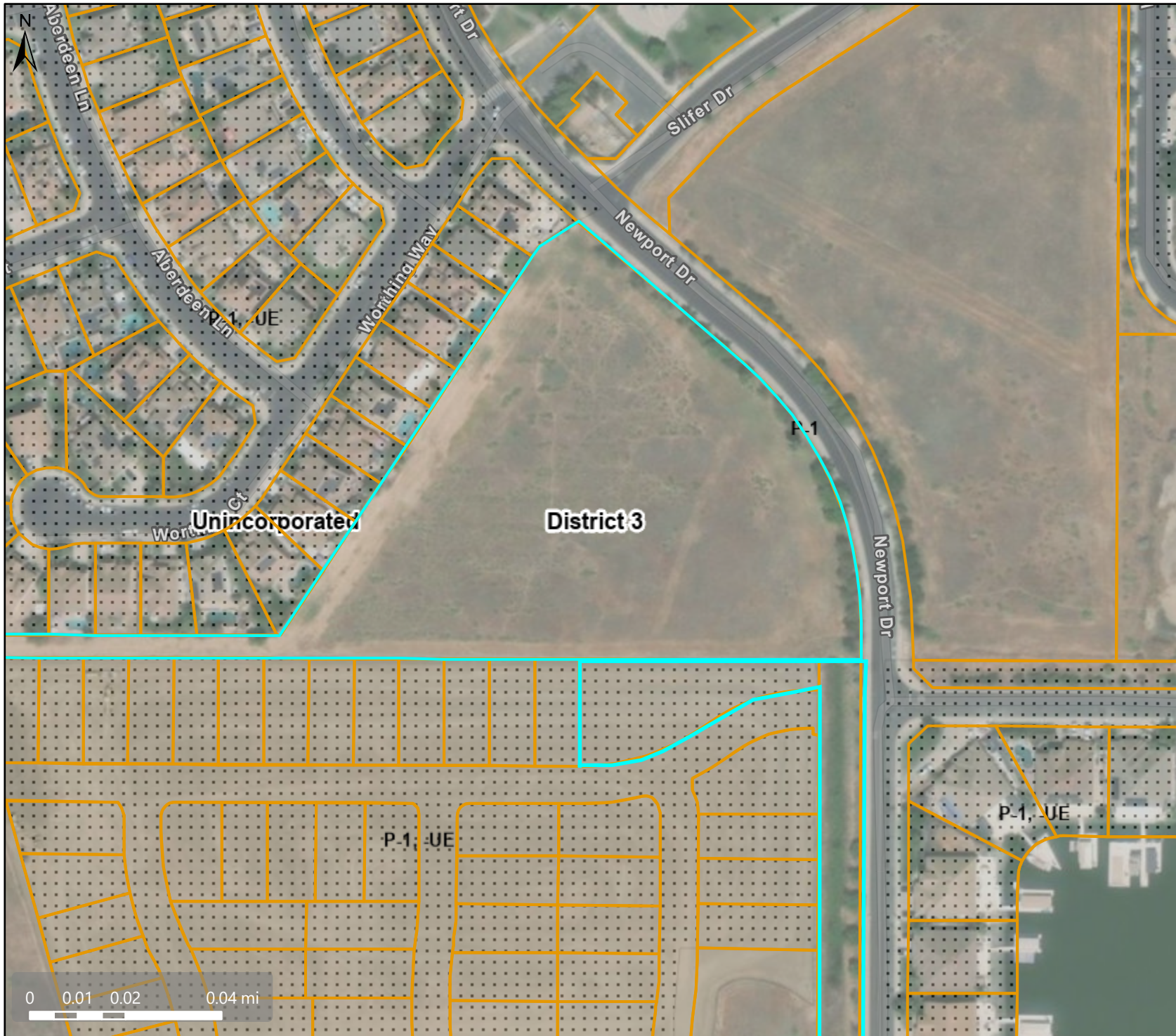
Map Legend

- Assessment Parcels
- Planning Layers (DCD)**
- General Plan**
- RLM (Residential Low-Medium Density) (3-7 du/na)
- RM (Residential Medium Density) (7-17 du/na)
- PR (Park and Recreation)
- RC (Resource Conservation)
- WA (Water)
- Unincorporated
- Board of Supervisors' Districts

This map is a user generated, static output from an internet mapping application and is intended for reference use only. Data layers that appear on this map may or may not be accurate, current, or otherwise reliable.
 THIS MAP IS NOT TO BE USED FOR NAVIGATION.
 CCMAP is maintained by Contra Costa County Department of Information Technology, County GIS. Data layers contained within the CCMAP application are provided by various Contra Costa County Departments. Please direct all data inquiries to the appropriate department.

Spatial Reference
 PCS: WGS 1984 Web Mercator Auxiliary Sphere
 Datum: WGS 1984

CDDP24-03053_Zoning Map



Map Legend

- Assessment
Parcels
- Planning Layers
(DCD)
- Zoning
- ZONE_OVER
- P-1 (Planned
Unit)
- P-1 -UE (Urban
Farm Animal
Exclusion)
- Unincorporated
- Board of
Supervisors'
Districts

This map is a user generated, static output from an internet mapping application and is intended for reference use only. Data layers that appear on this map may or may not be accurate, current, or otherwise reliable.

THIS MAP IS NOT TO BE USED FOR NAVIGATION.

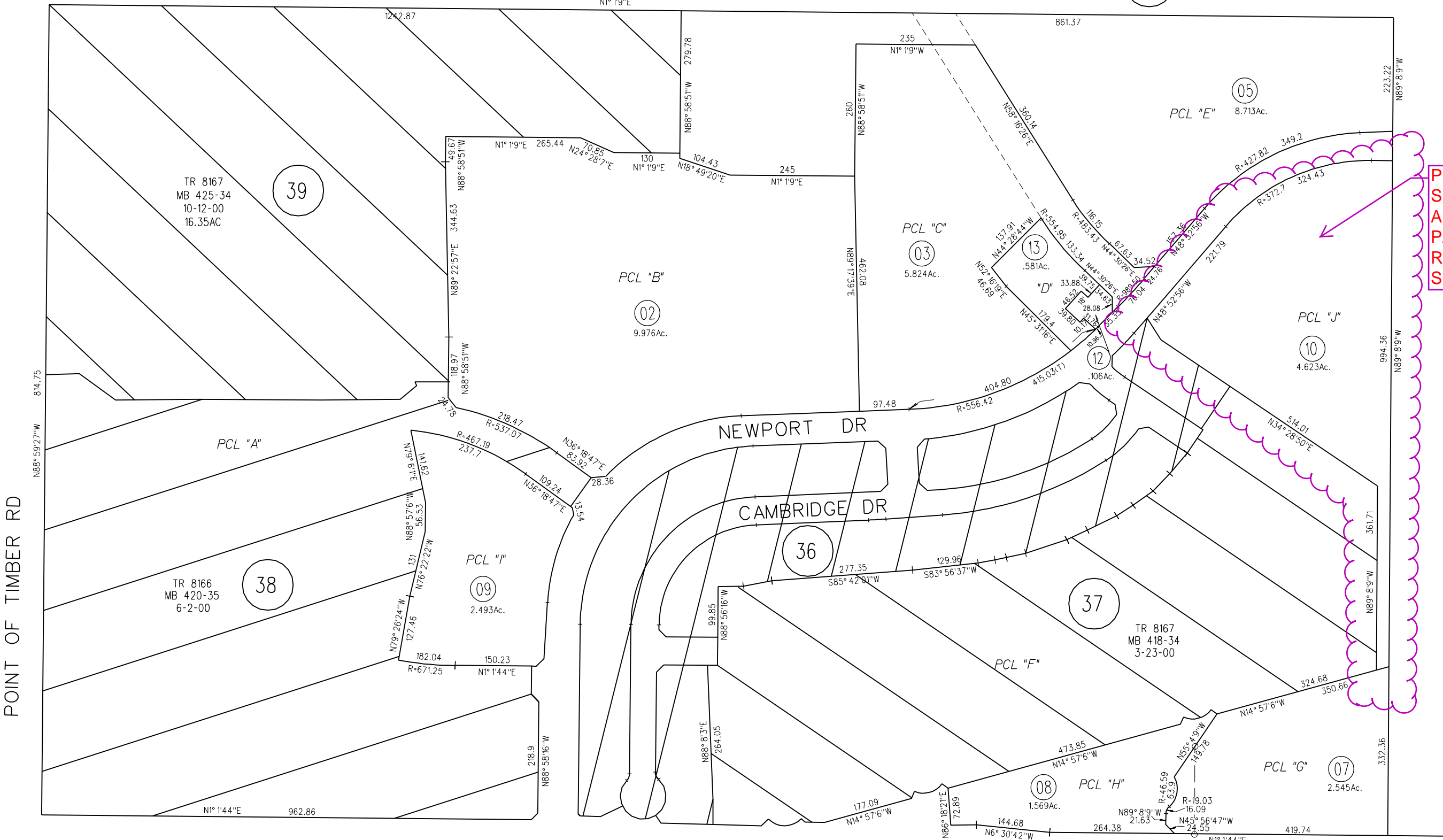
CCMap is maintained by Contra Costa County Department of Information Technology, County GIS. Data layers contained within the CCMap application are provided by various Contra Costa County Departments. Please direct all data inquires to the appropriate department.

Spatial Reference
PCS: WGS 1984 Web Mercator Auxiliary Sphere
Datum: WGS 1984



23

22



PROJECT SITE,
SEE OTHER
ASSESSOR'S
PAGE FOR
REFERENCE TO
SECOND PARCEL

NOTE: THIS MAP WAS PREPARED FOR ASSESSMENT PURPOSES ONLY. NO LIABILITY IS ASSUMED FOR THE ACCURACY OF THE INFORMATION DELINEATED HEREON. ASSESSOR'S PARCELS MAY NOT COMPLY WITH LOCAL LOT SPLIT OR BUILDING SITE ORDINANCES.

38

350

12

4/23/03

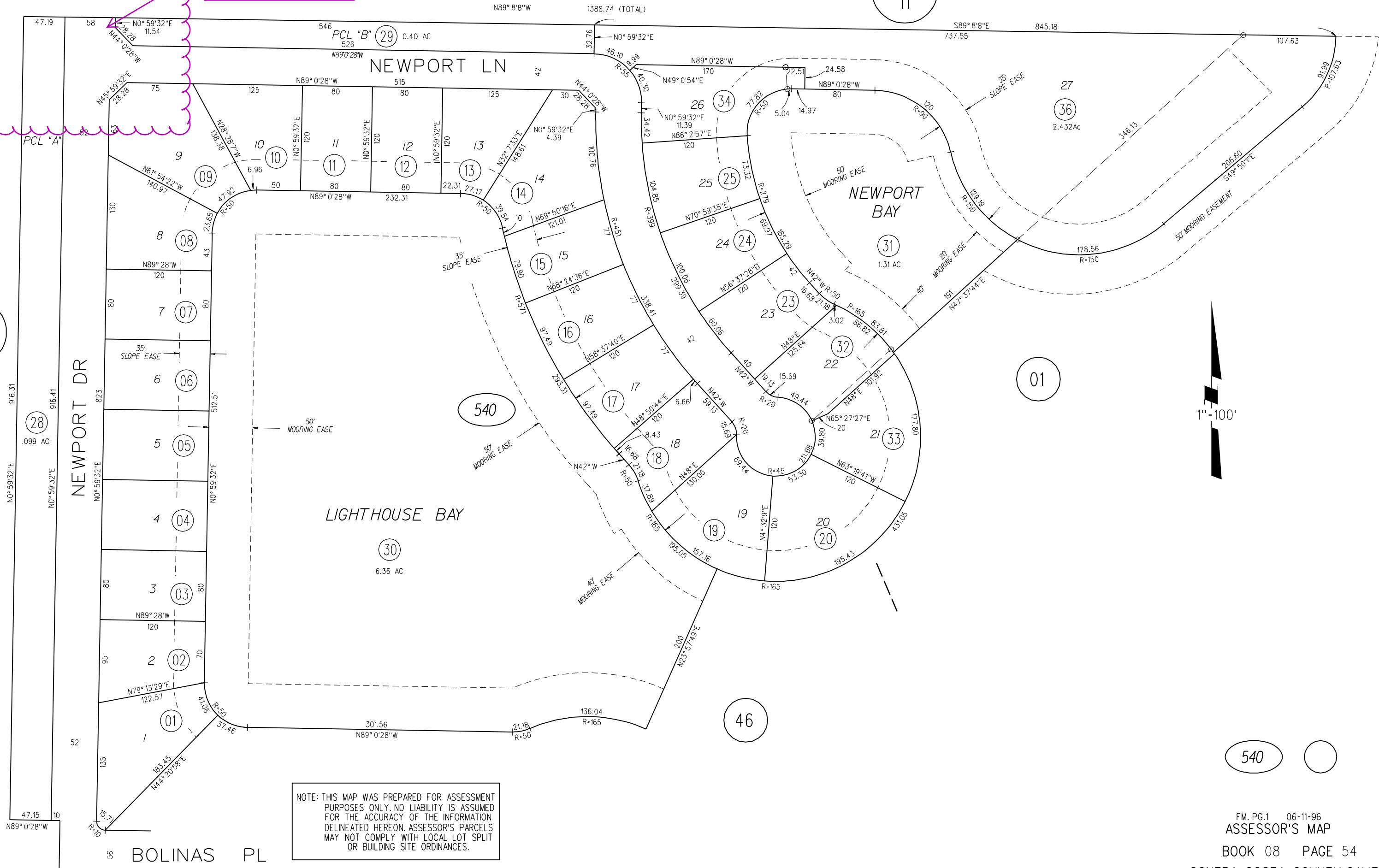
CONTINUATION OF PROJECT SITE

1997 ROLL-TRACT 7140 M.B. 385-43 (DISCOVERY BAY)

BK 11

N-28

BK 11



NOTE: THIS MAP WAS PREPARED FOR ASSESSMENT PURPOSES ONLY. NO LIABILITY IS ASSUMED FOR THE ACCURACY OF THE INFORMATION DELINEATED HEREON. ASSESSOR'S PARCELS MAY NOT COMPLY WITH LOCAL LOT SPLIT OR BUILDING SITE ORDINANCES.

1" = 100'

540