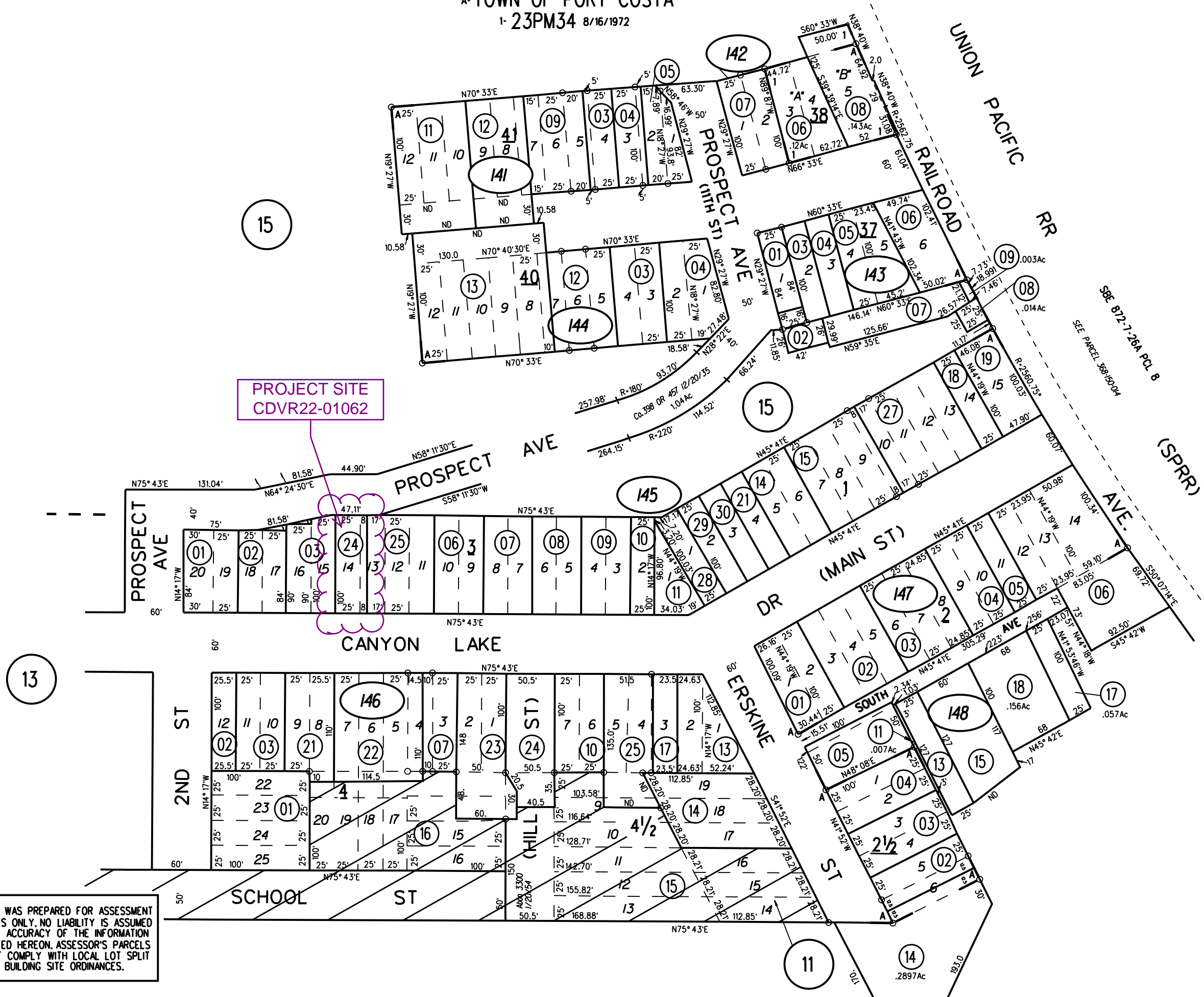
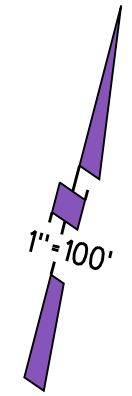


RANCHO CANADA DEL HAMBRE
A- TOWN OF PORT COSTA
1- 23PM34 8/16/1972



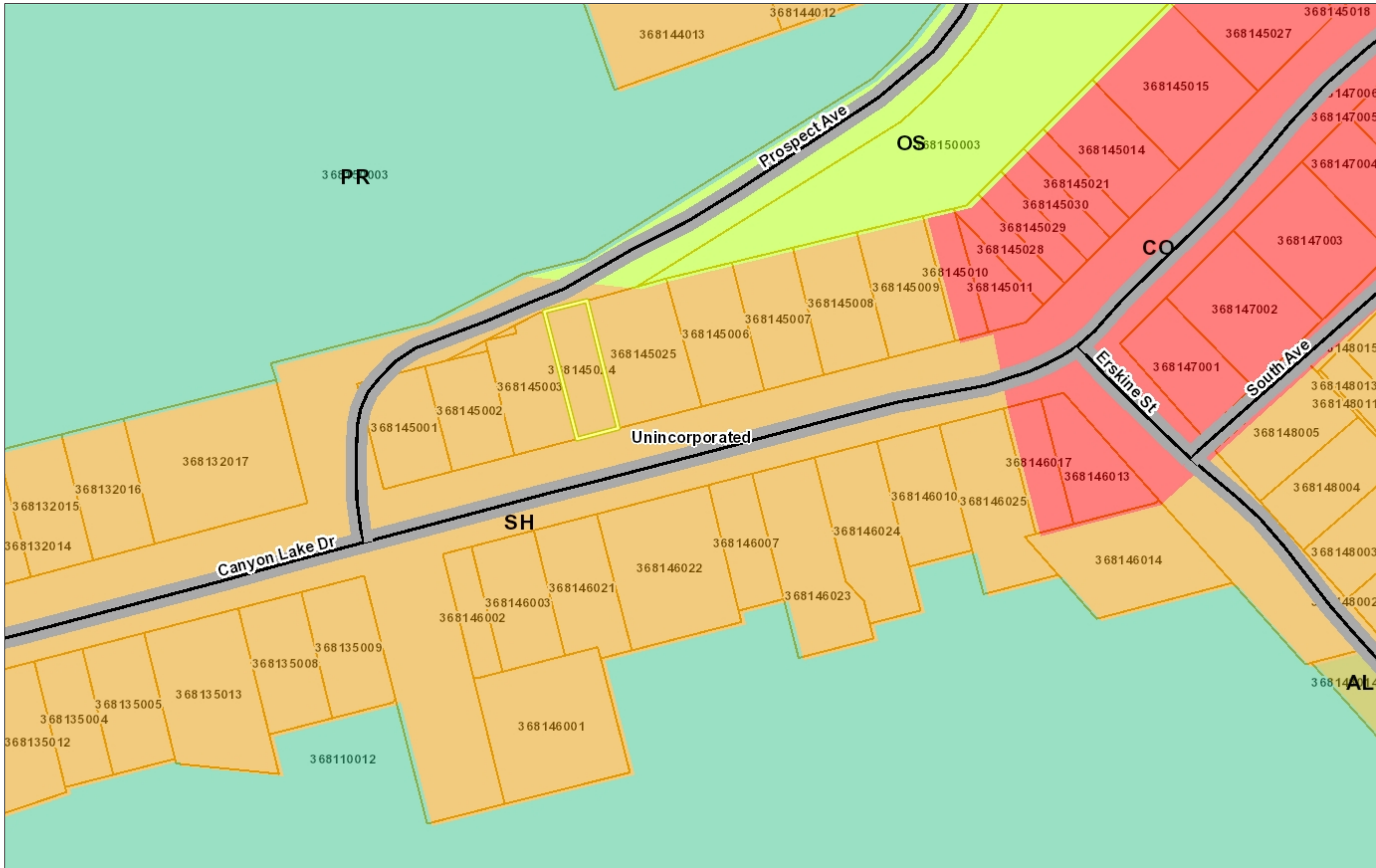
PROJECT SITE
CDVR22-01062



141	11,12	1/24/18
142		
143		
144	13	1/24/18
145	30	12/11/03
146		
147		
148		

NOTE: THIS MAP WAS PREPARED FOR ASSESSMENT PURPOSES ONLY. NO LIABILITY IS ASSUMED FOR THE ACCURACY OF THE INFORMATION DELINEATED HEREON. ASSESSOR'S PARCELS MAY NOT COMPLY WITH LOCAL LOT SPLIT OR BUILDING SITE ORDINANCES.

General Plan: SH, Single-Family Residential - High Density



Legend

- City Limits
- Unincorporated
- Highways
- Highways Bay Area
- Streets
- General Plan**
- SV (Single Family Residential - Ver
- SL (Single Family Residential - Low
- SM (Single Family Residential - Me
- SH (Single Family Residential - Hig
- ML (Multiple Family Residential - Lc
- MM (Multiple Family Residential - M
- MH (Multiple Family Residential - H
- MV (Multiple Family Residential - V
- MS (Multiple Family Residential - V
- CC (Congregate Care/Senior Housi
- MO (Mobile Home)
- M-1 (Parker Avenue Mixed Use)
- M-2 (Downtown/Waterfront Rodeo I
- M-3 (Pleasant Hill BART Mixed Use
- M-4 (Willow Pass Road Mixed Use)
- M-5 (Willow Pass Road Commercia
- M-6 (Bay Point Residential Mixed U
- M-7 (Pittsburg/Bay Point BART Star
- M-8 (Dougherty Valley Village Cent
- M-9 (Montalvin Manor Mixed Use)
- M-10 (Willow Pass Business Park M
- M-11 (Appian Way Mixed Use)
- M-12 (Triangle Area Mixed Use)
- M-13 (San Pablo Dam Road Mixed
- M-14 (Heritage Mixed Use)
- CO (Commercial)
- OF (Office)
- BP (Business Park)
- LI (Light Industry)
- HI (Heavy Industry)
- AL, OIBA (Agricultural Lands & Off
- CR (Commercial Recreation)
- ACO (Airport Commercial)

1:1,128



0.0 0 0.02 0.0 Miles

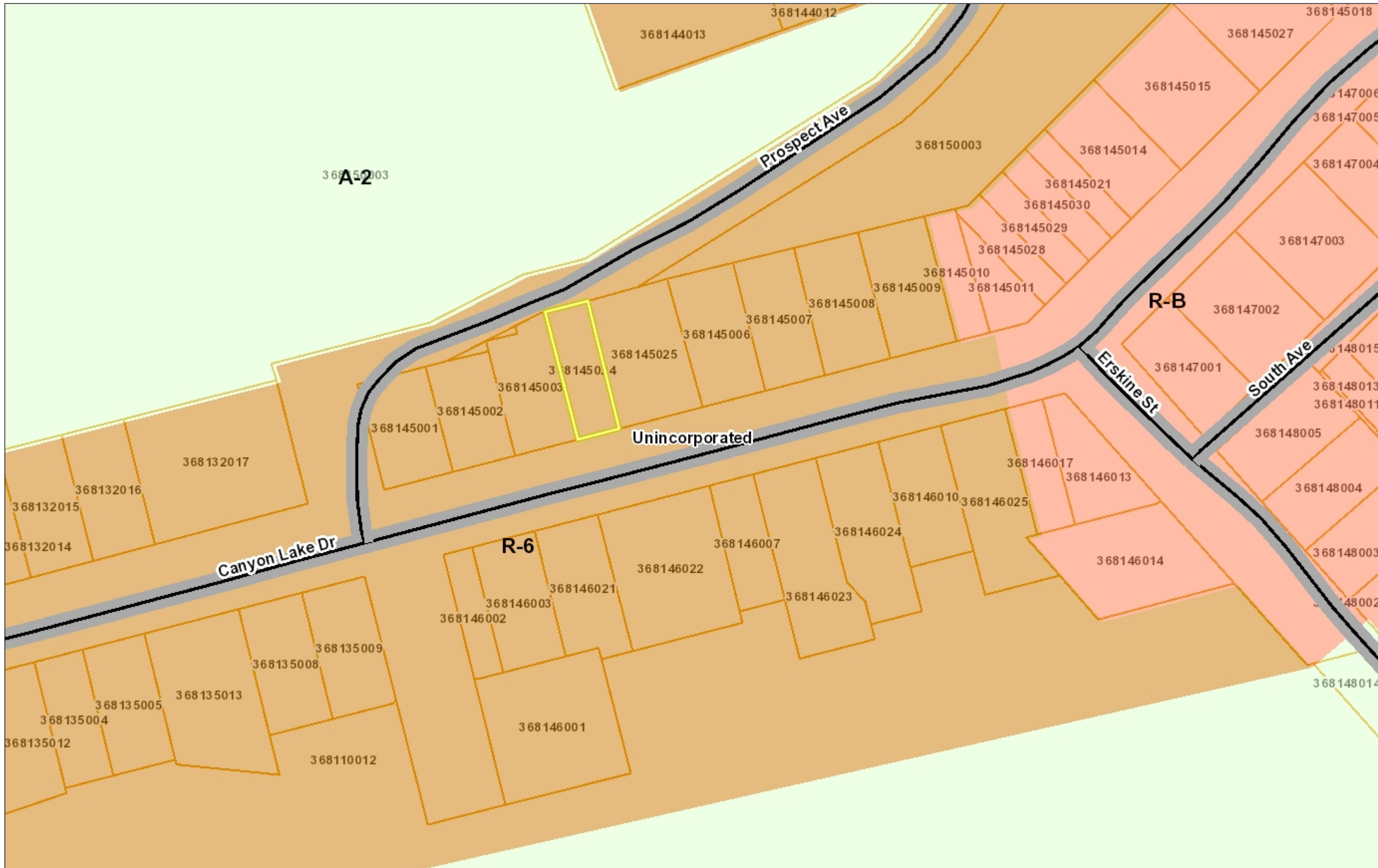
WGS_1984_Web_Mercator_Auxiliary_Sphere

This map is a user generated static output from an Internet mapping site and is for reference only. Data layers that appear on this map may or may not be accurate, current, or otherwise reliable.

THIS MAP IS NOT TO BE USED FOR NAVIGATION

Notes

Contra Costa County -DOIT GIS



Legend

- City Limits
- Unincorporated
- Highways
- Highways Bay Area
- Streets
- Zoning
 - R-6 (Single Family Residential)
 - R-6, -FH -UE (Flood Hazard and A
 - R-6 -SD-1 (Slope Density Hillside I
 - R-6 -TOV -K (Tree Obstruction anc
 - R-6, -UE (Urban Farm Animal Excl
 - R-6 -X (Railroad Corridor Combinir
 - R-7 (Single Family Residential)
 - R-7 -X (Railroad Corridor Combinir
 - R-10 (Single Family Residential)
 - R-10, -UE (Urban Farm Animal Exc
 - R-12 (Single Family Residential)
 - R-15 (Single Family Residential)
 - R-20 (Single Family Residential)
 - R-20, -UE (Urban Farm Animal Exc
 - R-40 (Single Family Residential)
 - R-40, -FH -UE (Flood Hazard and A
 - R-40, -UE (Urban Farm Animal Exc
 - R-65 (Single Family Residential)
 - R-100 (Single Family Residential)
 - D-1 (Two Family Residential)
 - D-1 -T (Transitional Combining Dist
 - D-1, -UE (Urban Farm Animal Excl
 - M-12 (Multiple Family Residential)
 - M-12 -FH (Flood Hazard Combining
 - M-17 (Multiple Family Residential)
 - M-29 (Multiple Family Residential)
 - F-R (Forestry Recreational)
 - F-R -FH (Flood Hazard Combining I
 - F-1 (Water Recreational)
 - F-1 -FH (Flood Hazard Combining I
 - A-2 (General Agriculture)
 - A-2, -BS (Boat Storage Combining I
 - A-2, -BS -SG (Boat Storage and So

1:1,128



0.0 0 0.02 0.0 Miles

WGS_1984_Web_Mercator_Auxiliary_Sphere

This map is a user generated static output from an Internet mapping site and is for reference only. Data layers that appear on this map may or may not be accurate, current, or otherwise reliable.

THIS MAP IS NOT TO BE USED FOR NAVIGATION

Notes

Contra Costa County -DOIT GIS



Legend

- City Limits
- Unincorporated
- Highways
- Highways Bay Area
- Streets
- Water Bodies
- County Boundary
- Bay Area Counties
- Assessment Parcels

Aerials 2019

- Red: Band_1
- Green: Band_2
- Blue: Band_3

World Imagery

- Low Resolution 15m Imagery
- High Resolution 60cm Imagery
- High Resolution 30cm Imagery
- Citations

1: 564



0.0 0 0.01 0.0 Miles

WGS_1984_Web_Mercator_Auxiliary_Sphere

This map is a user generated static output from an Internet mapping site and is for reference only. Data layers that appear on this map may or may not be accurate, current, or otherwise reliable.

THIS MAP IS NOT TO BE USED FOR NAVIGATION

Notes

Contra Costa County -DOIT GIS