

DCD Sea Level Rise Team

Contra Costa Resilient Shoreline Coalition

February 18, 2025

Who might participate in the Resilient Shoreline Coalition?

Regional Agencies

Shoreline Cities

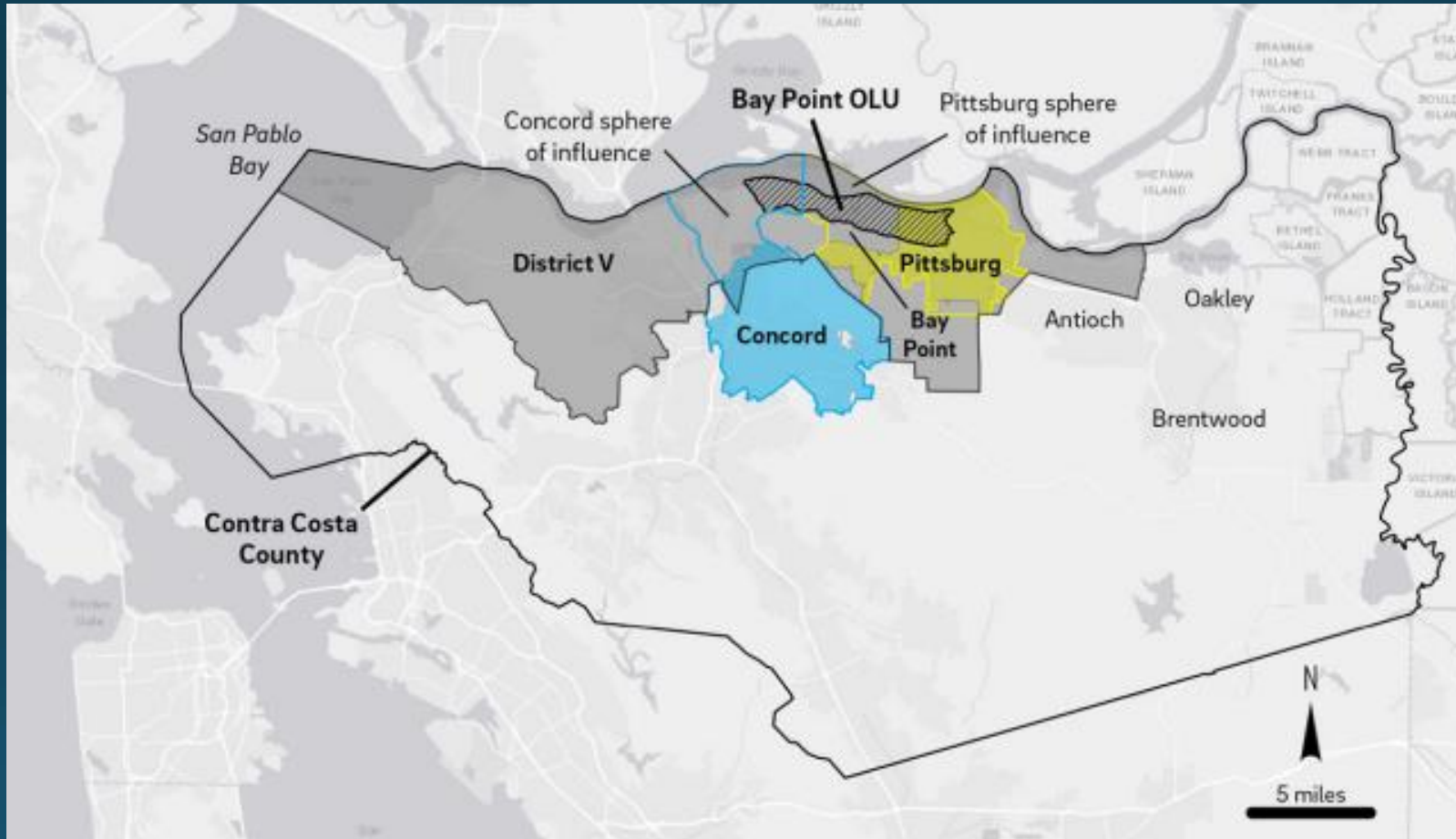
Special Districts

Private Landowners

Community Based Organizations

Creating the Resilient Shoreline Coalition

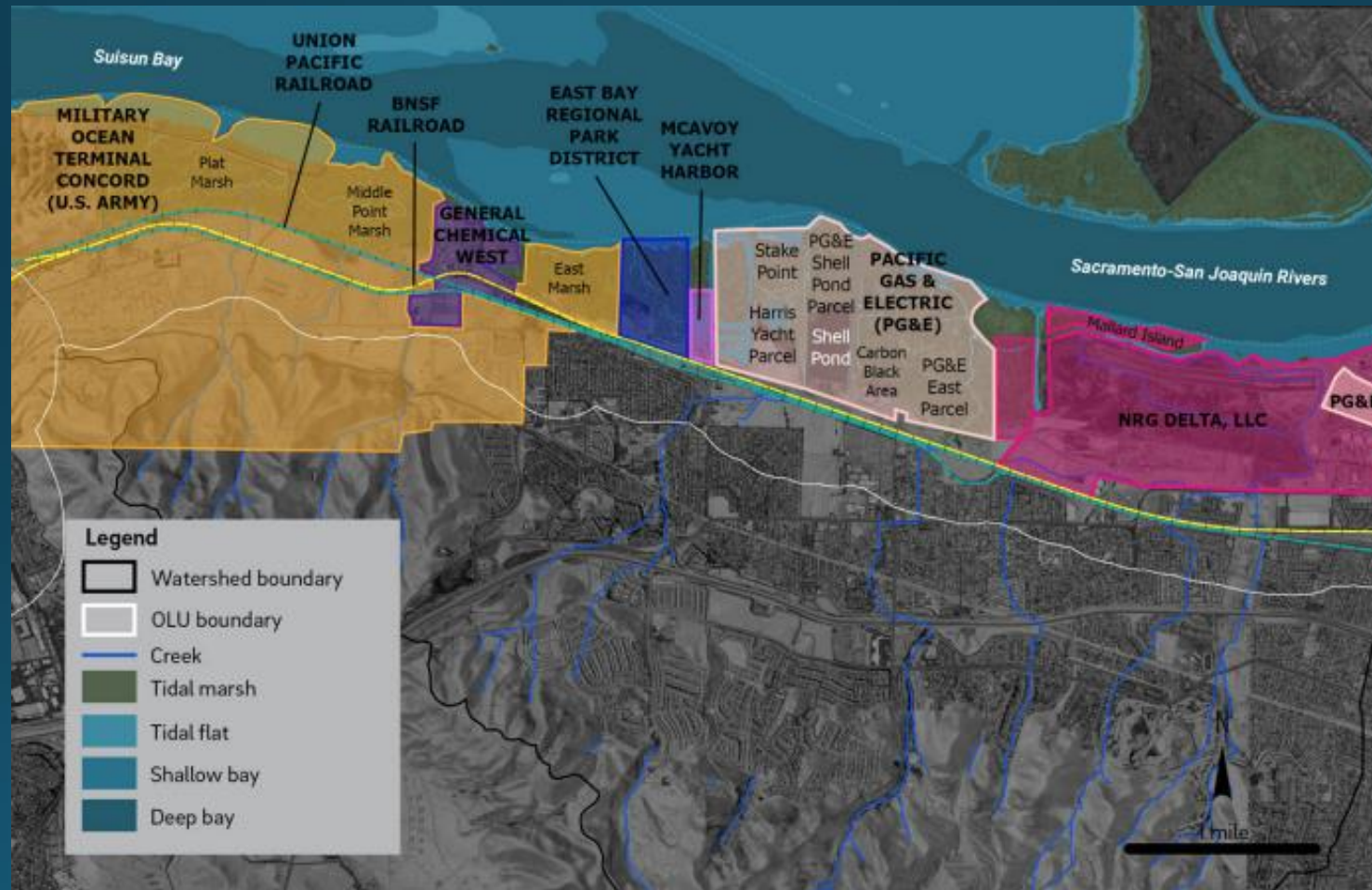
Step 1: Define geographic focus areas



Map of Bay Point Operational Landscape Unit (OLU) contextualized with neighboring jurisdictions and spheres of influence.

Creating the Resilient Shoreline Coalition

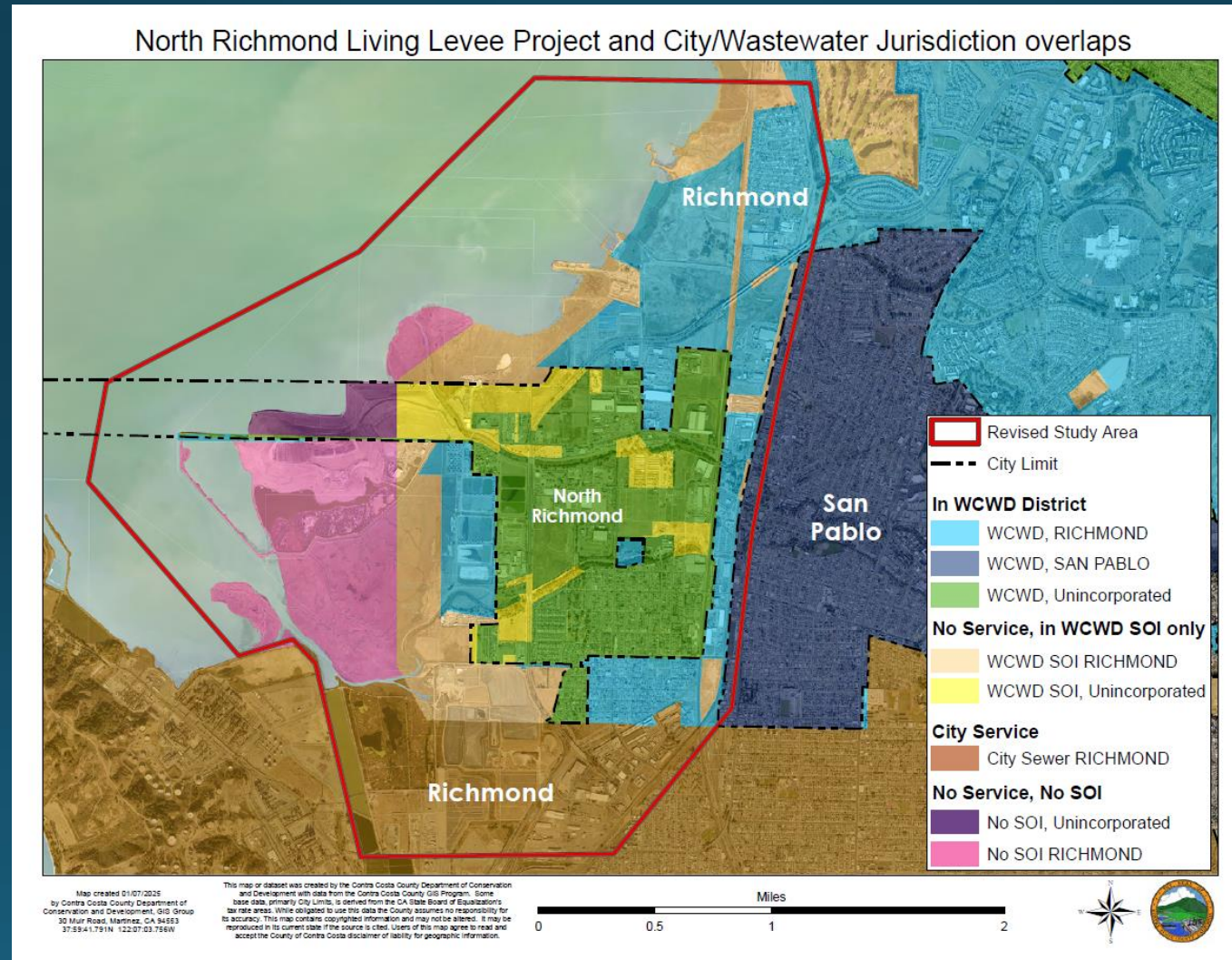
Step 2: Map ownership of parcels and assets to identify specific stakeholders to engage



Portion of Bay Point Operational Landscape Unit (OLU) with parcels labeled by owner

Creating the Resilient Shoreline Coalition

Step 3: Coordinate efforts among stakeholders to advance collective shoreline resilience



What would the Resilient Shoreline Coalition do?

Goal: Coordinate and align efforts to advance Contra Costa shoreline resilience

Involvement Based on Capacity



Level 1

Stay informed via email and meetings as needed/requested.



Level 2

Engage in the development of Contra Costa Resilient Shoreline Plan (meetings, workshops, curriculum development). Provide input on impact of Contra Costa Resilient Shoreline Plan to own organization.



Level 3

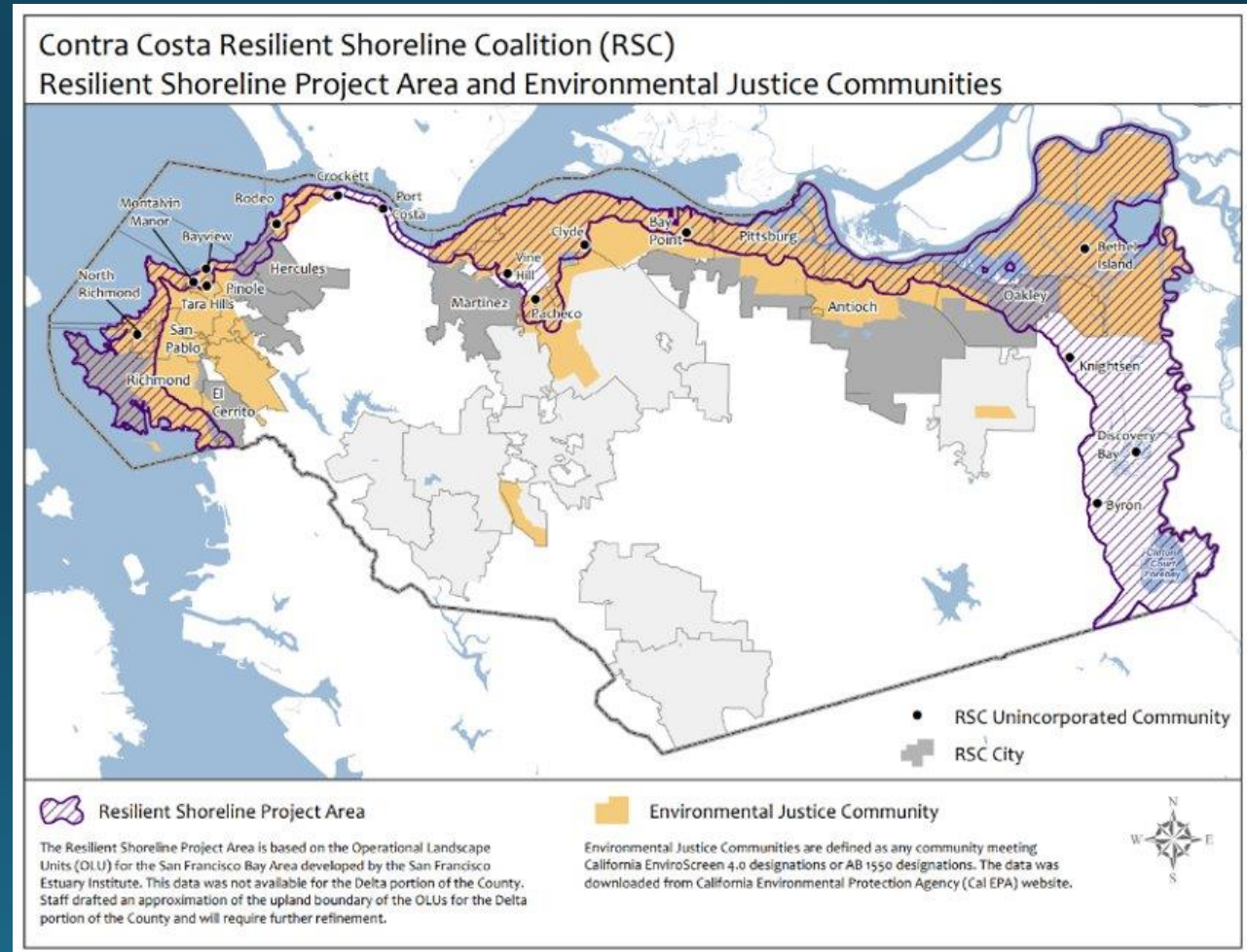
Incorporate Contra Costa Resilient Shoreline Plan into organization's own work.



Contra Costa Resilient Shoreline Plan as a Beneficial Tool for Coordination

Good news! Contra Costa County has funding through its Ocean Protection Council SB 1 grant award to start creating the Resilient Shoreline Coalition:

- Create a comprehensive stakeholder inventory for the entire Contra Costa shoreline and
- Undertake a stakeholder capacity exercise to right-size each stakeholder's involvement



Resilient Shoreline Coalition Coordination in Practice - Example

Sanitary District

Municipal Regional Permit Climate Change Adaptation planning requirement from San Francisco Regional Water Quality Control Board

Uplift existing vulnerability assessments and capital improvement projects

Coordinate alongside similar projects in Contra Costa County. Align projects with regional guidelines for regional funding opportunities as described in Bay Adapt Joint Platform (Task 8.1)

Coordination for Compliance

Information Sharing

Benefits

Contra Costa County

Compliance with SB 272

Contextualize Sanitary District's asset vulnerability within Plan. Ask Sanitary District staff (asset expert) to groundtruth results from comprehensive vulnerability assessment.

Coordinate larger scope/effort across geographies rather than sector. Advocate for beneficial projects to be included in regional priority project. Economies of scale: One comprehensive plan rather than fragmented sector-specific plans.



Thank you!

If you have any questions, please
email Ryan Hernandez at
Ryan.Hernandez@dcd.cccounty.us.