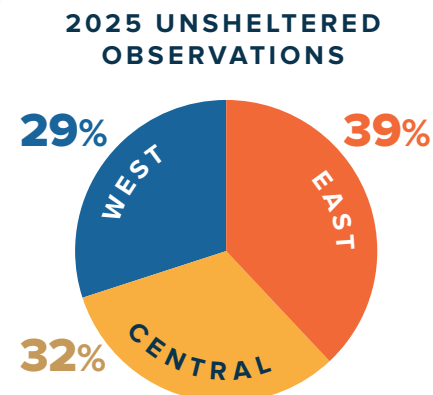
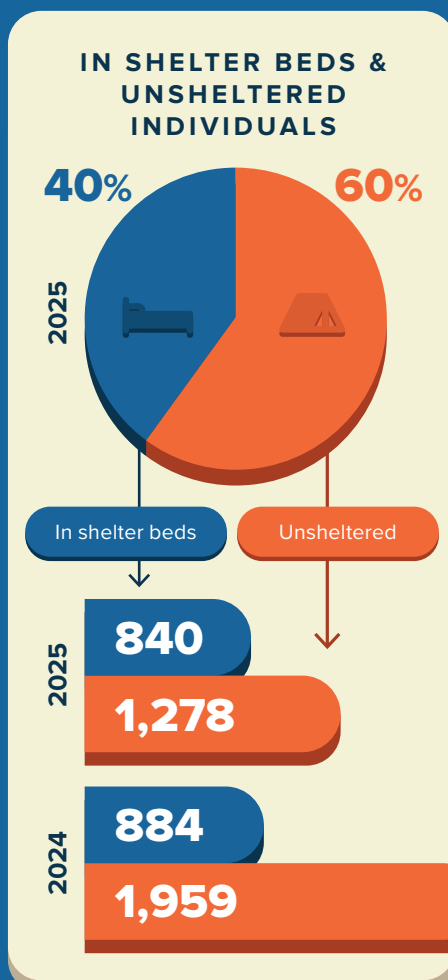
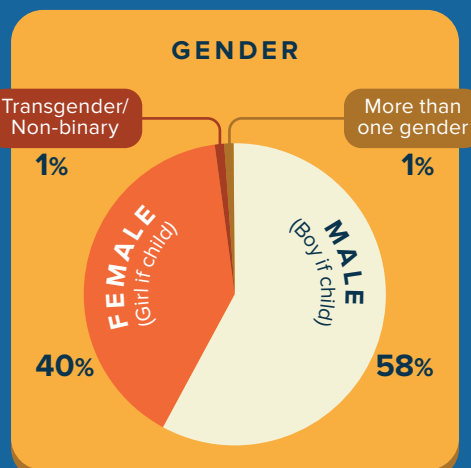
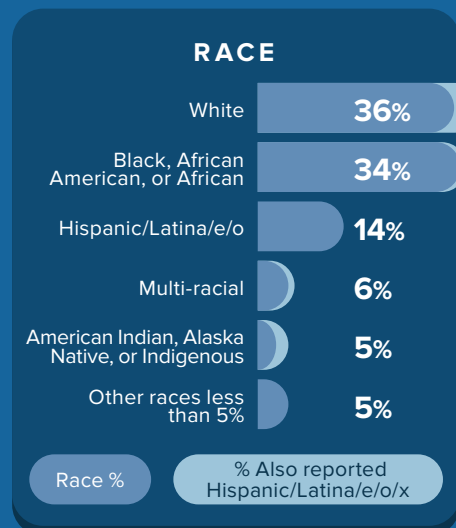
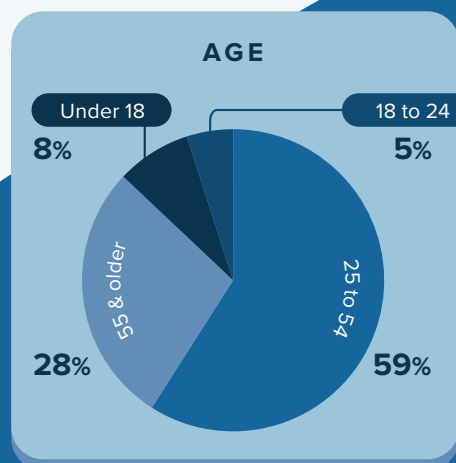


Contra Costa County

2025 HOMELESS POINT-IN-TIME COUNT

The 2025 PIT Count methodology followed the Housing and Urban Development's guidelines for a "night of" observational count followed by a random sample survey to gather demographic data and homeless experience.



WEST COUNTY

	2024	2025
Crockett	21	3
El Cerrito	11	21
North Richmond	5	16
Pinole	7	12
Richmond	388	208
Rodeo	29	17
San Pablo	35	13
Total	• 502	• 297

41% decrease from 2024

CENTRAL COUNTY

	2024	2025
Concord	173	131
Martinez	158	63
Pacheco	28	10
Pleasant Hill	42	32
San Ramon	10	8
Walnut Creek	64	50
Total	• 485	• 321

33% decrease from 2024

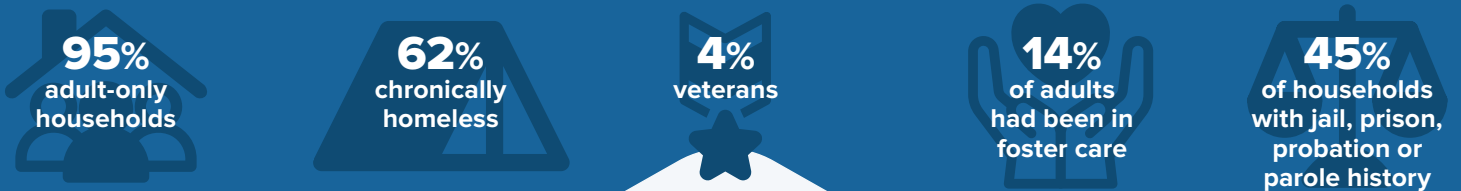
EAST COUNTY

	2024	2025
Antioch	413	246
Bay Point	51	31
Brentwood	30	5
Oakley	35	25
Pittsburg	110	73
Total	• 646	• 388

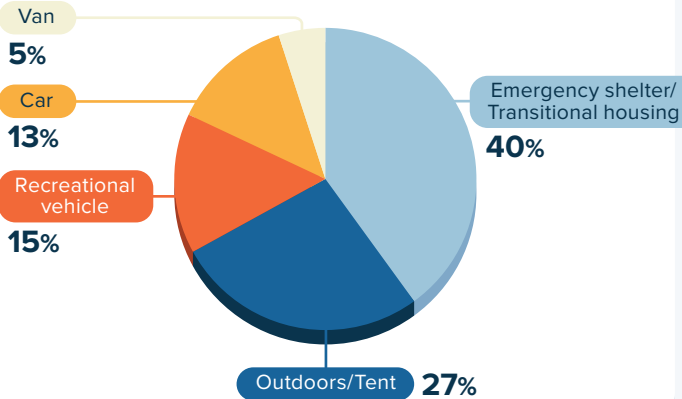
41% decrease from 2024

• Totals include cities where fewer than five unsheltered individuals were observed. Figures represent raw city-level counts.

POPULATION CHARACTERISTICS



SLEEP SETTINGS ON THE NIGHT OF THE COUNT



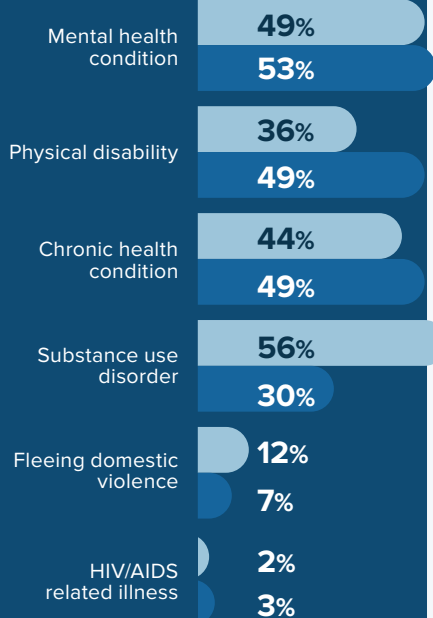
TEMPORARY & PERMANENT HOUSING BEDS

34% Increase in temporary and permanent housing beds over two years

	2023	2025
Emergency shelter	665	817
Transitional housing	275	291
Rapid rehousing	294	572
Permanent supportive housing	1,325	1,629
Other permanent housing	274	478

SELF REPORTED HEALTH CONDITIONS FROM SURVEY DATA

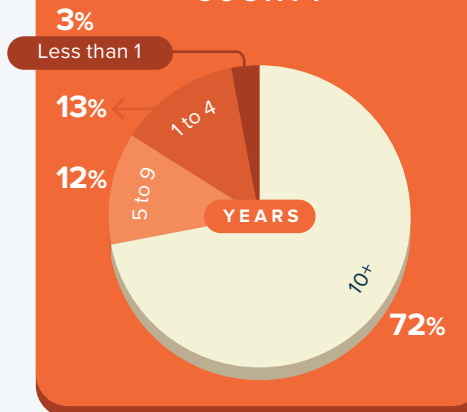
86% of households had at least one member with a disabling condition



Unsheltered households Sheltered households (HMIS participating only)

Multiple response question, results do not add up to 100%

YEARS OF RESIDENCY IN CONTRA COSTA COUNTY



DISPLACEMENT EXPERIENCE

In the past year, did police or city workers make you move from where you were staying?

63% YES

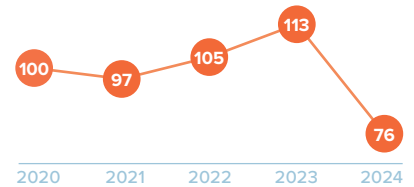
When you had to move, did you lose any belongings or did officials take them?

75% YES

Were you offered services when you were required to move?

54% YES

TOTAL DEATHS RECORDED BY CORONER FOR PEOPLE EXPERIENCING HOMELESSNESS



Note: Death totals reflect data from the full calendar year.

Along with a decrease in homelessness, there were also fewer deaths among people experiencing homelessness.