



**REPLICA PARK STRUCTURE PLAN**

SCALE: 1/16"=1'-0"

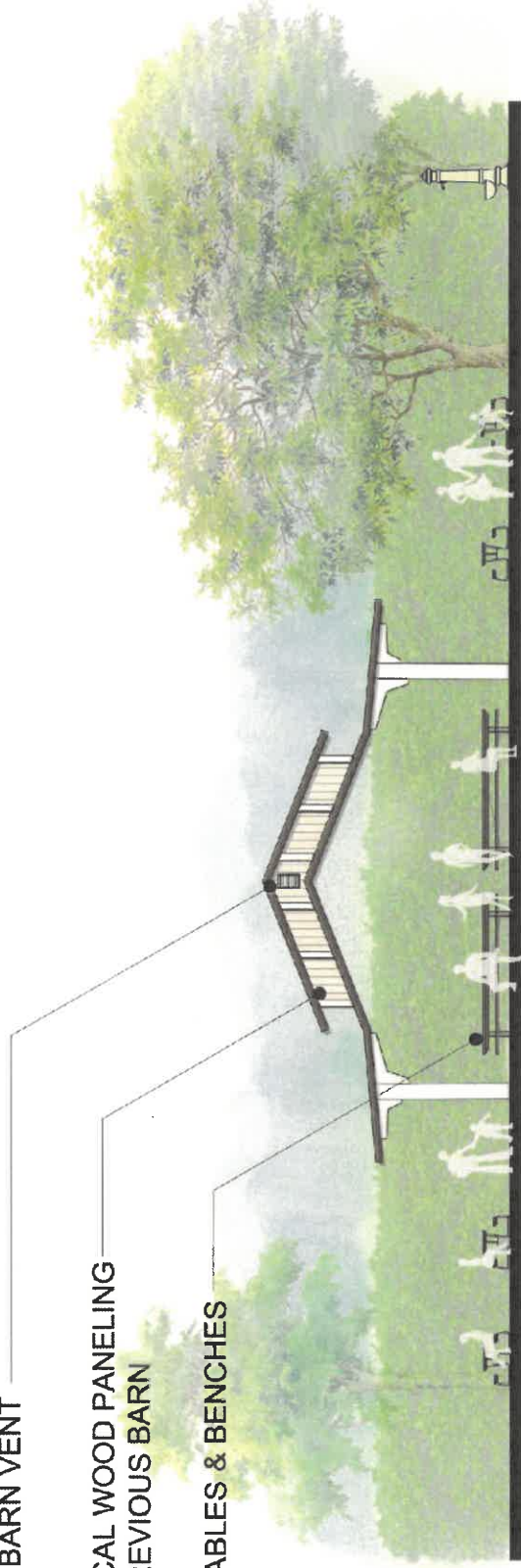
© ROBERT MOWAT ASSOCIATES 2021

9-13-2021

REPLICA BARN VENT

HISTORICAL WOOD PANELING  
FROM PREVIOUS BARN

PICNIC TABLES & BENCHES



## POTENTIAL ACTIVITIES

- PICNIC USES
- FARM TO TABLE DEMONSTRATIONS
- OUTDOOR CLASSES
- EXHIBITS & LECTURES
- HAP MAGEE FARMER'S MARKET
- CREEK INTERPRETIVE EVENTS

## REPLICA PARK STRUCTURE - CONCEPT 1

SCALE: 1/8"=1'-0"

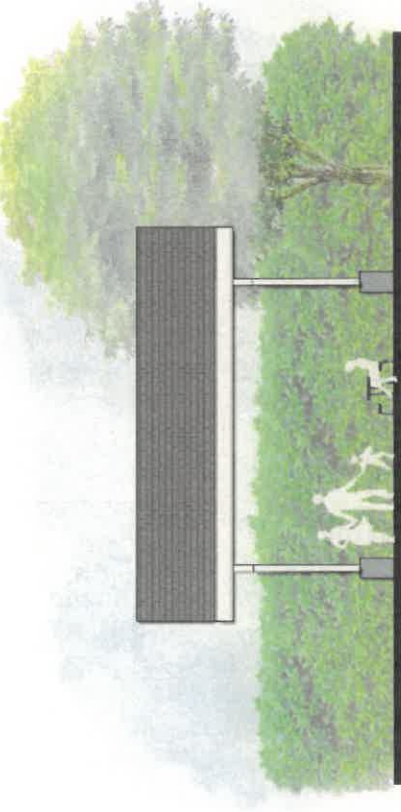
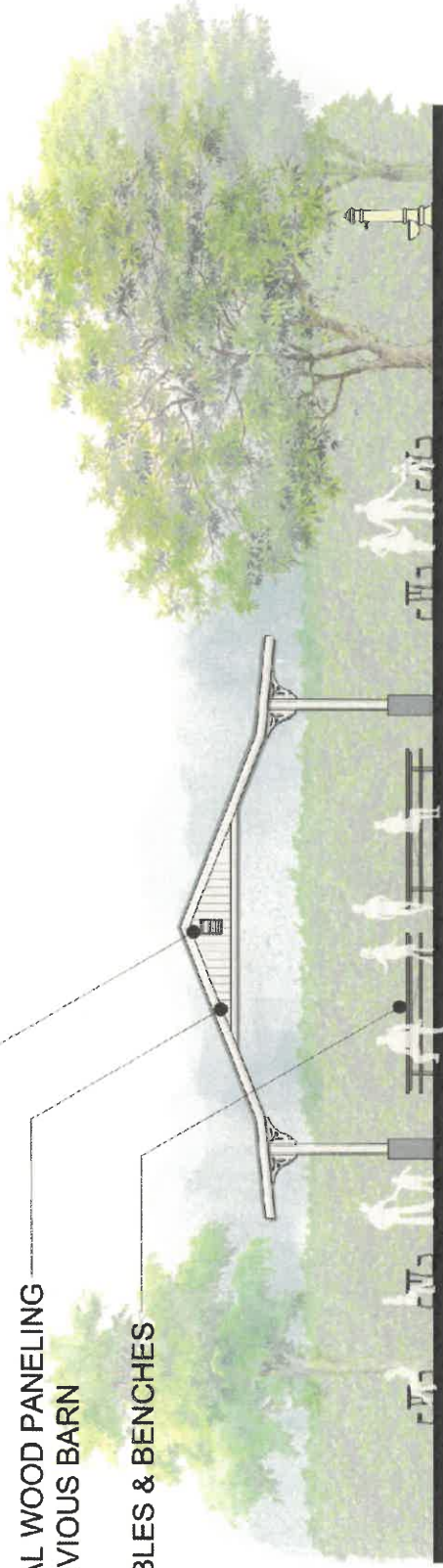
© ROBERT MOWAT ASSOCIATES 2021

9-13-2021

REPLICA BARN VENT

HISTORICAL WOOD PANELING  
FROM PREVIOUS BARN

PICNIC TABLES & BENCHES



## POTENTIAL ACTIVITIES

- PICNIC USES
- FARM TO TABLE DEMONSTRATIONS
- OUTDOOR CLASSES
- EXHIBITS & LECTURES
- HAP MAGEE FARMER'S MARKET
- CREEK INTERPRETIVE EVENTS

## REPLICA PARK STRUCTURE - CONCEPT 2

SCALE: 1/8"=1'-0"

© ROBERT MOWAT ASSOCIATES 2021

9-13-2021

## Alamo Municipal Advisory Council

Sharon Burke, Chair  
Heather Chaput, Vice Chair  
Anne Struthers  
Cecily Barclay  
Michaela Straznicka  
Robert Brannan  
Robert Mowat  
Michelle Parkinson, Alternate  
Nicolas Angel-Ordonez, Youth Member



## Candace Andersen, Supervisor

Contra Costa County, District 2  
309 Diablo Road  
Danville, CA 94526  
925.655.2300

[supervisorandersen@bos.cccounty.us](mailto:supervisorandersen@bos.cccounty.us)

*The Alamo Municipal Advisory Council serves as an advisory body to the Contra Costa County Board of Supervisors and the County Planning Agency.*

January 8, 2024

Town of Danville  
Attention: Dave Casteel  
Maintenance Services Director  
Town of Danville  
1000 Sherburne Hills Road  
Danville, CA 94526

Dear Dave,

The Alamo Municipal Advisory Council (MAC) has discussed the proposed shade structure at Hap Magee several times over the past two years.

Alamo MAC members have carefully considered what the community would like and have spent time considering their own personal priorities as well as those of the community. At their December 5, 2023 meeting, the MAC made a motion to recommend Site Three (near the Labyrinth) using the design that was presented to the Alamo MAC (per designs attached) using the wood that was saved from the Tack Room.

We look forward to working with you on this joint project.

Sincerely,

*Sharon Burke*

Sharon Burke  
Alamo MAC Chair