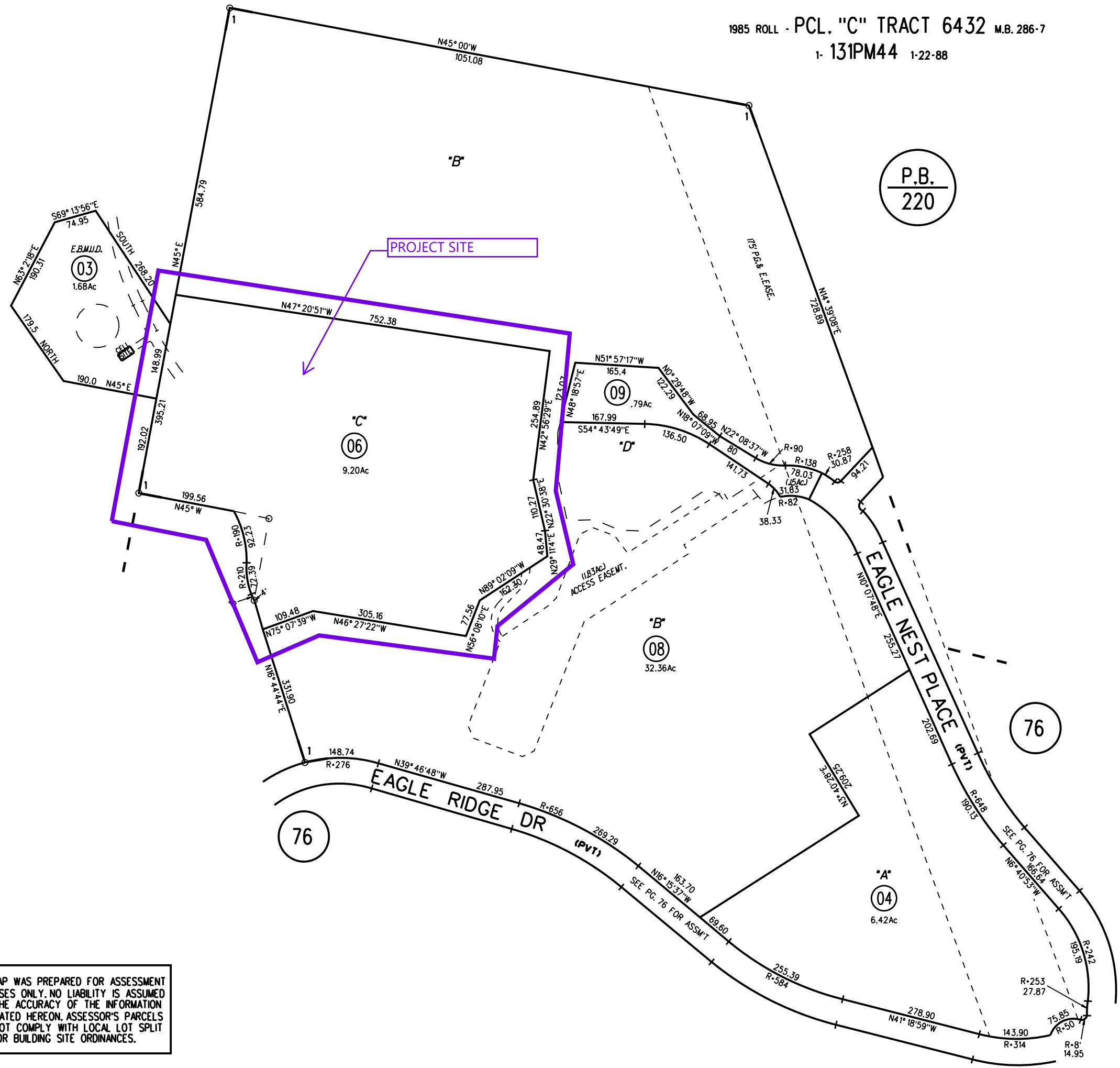


P.B.  
220

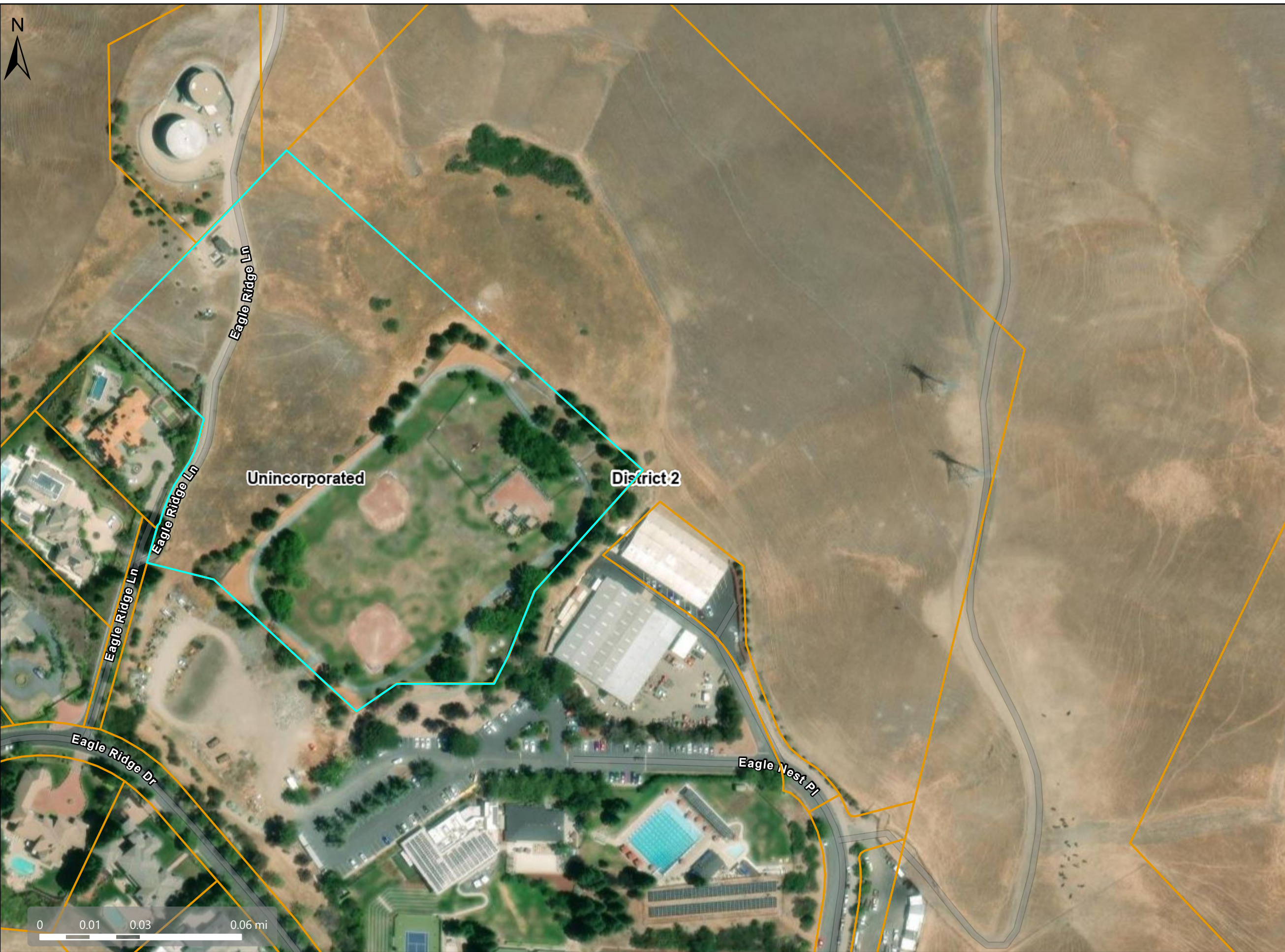
P.B.  
220







NOTE: THIS MAP WAS PREPARED FOR ASSESSMENT PURPOSES ONLY. NO LIABILITY IS ASSUMED FOR THE ACCURACY OF THE INFORMATION DELINEATED HEREON. ASSESSOR'S PARCELS MAY NOT COMPLY WITH LOCAL LOT SPLIT OR BUILDING SITE ORDINANCES.

770 (08,09)  
1/27/25

# Aerial Map



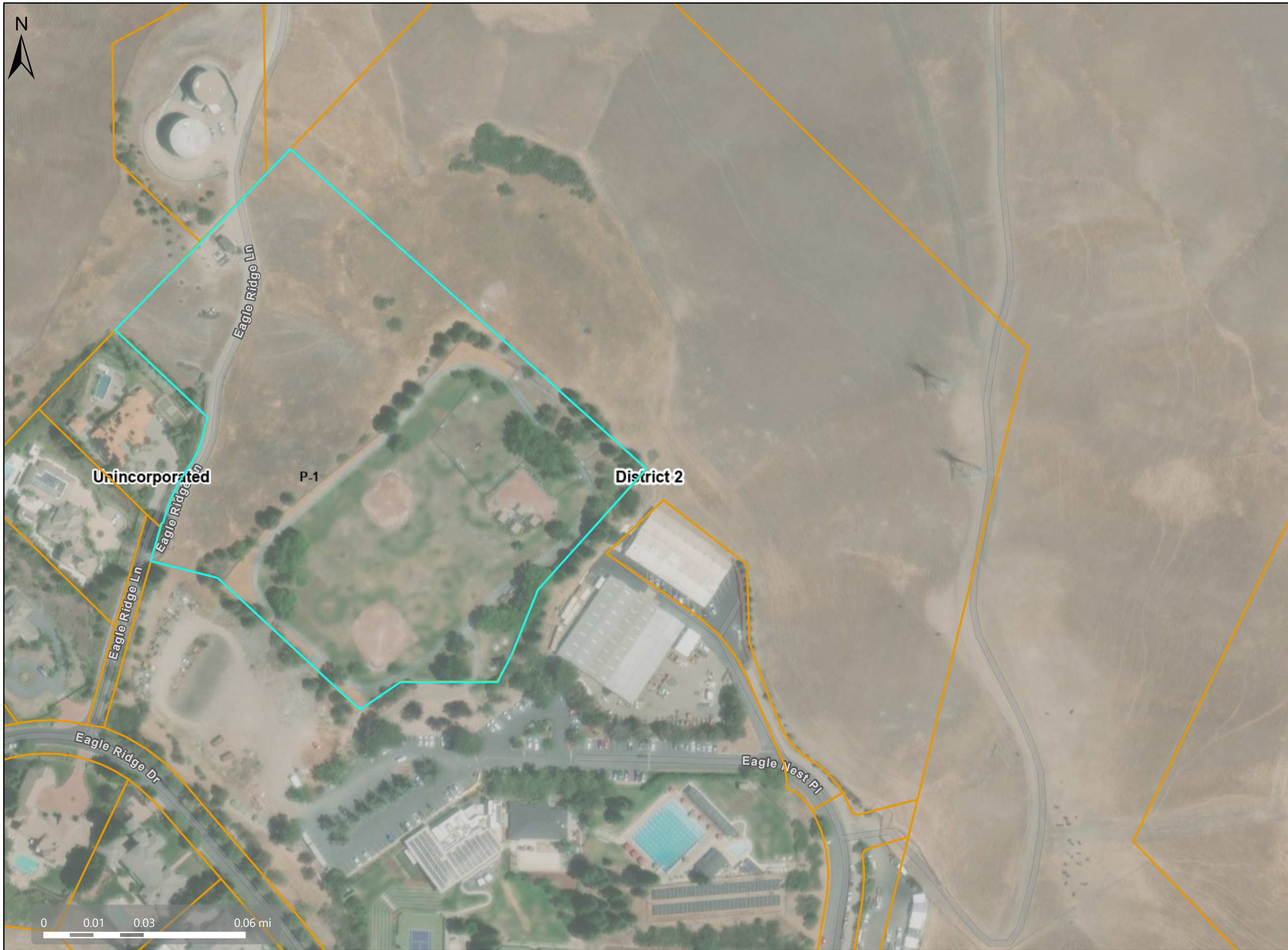
## Map Legend

-  County Border
-  Assessment  
Parcels
-  Unincorporated
-  Board of  
Supervisors'  
Districts

This map is a user generated, static output from an internet mapping application and is intended for reference use only.  
Data layers that appear on this map may or may not be accurate, current, or otherwise reliable.  
THIS MAP IS NOT TO BE USED FOR NAVIGATION.  
CCMap is maintained by Contra Costa County Department of Information Technology, County GIS.  
Data layers contained within the CCMap application are provided by various Contra Costa County Departments.  
Please direct all data inquires to the appropriate department.

Spatial Reference  
PCS: WGS 1984 Web Mercator Auxiliary Sphere  
Datum: WGS 1984

# Zoning - P-1, Planned-Unit Development

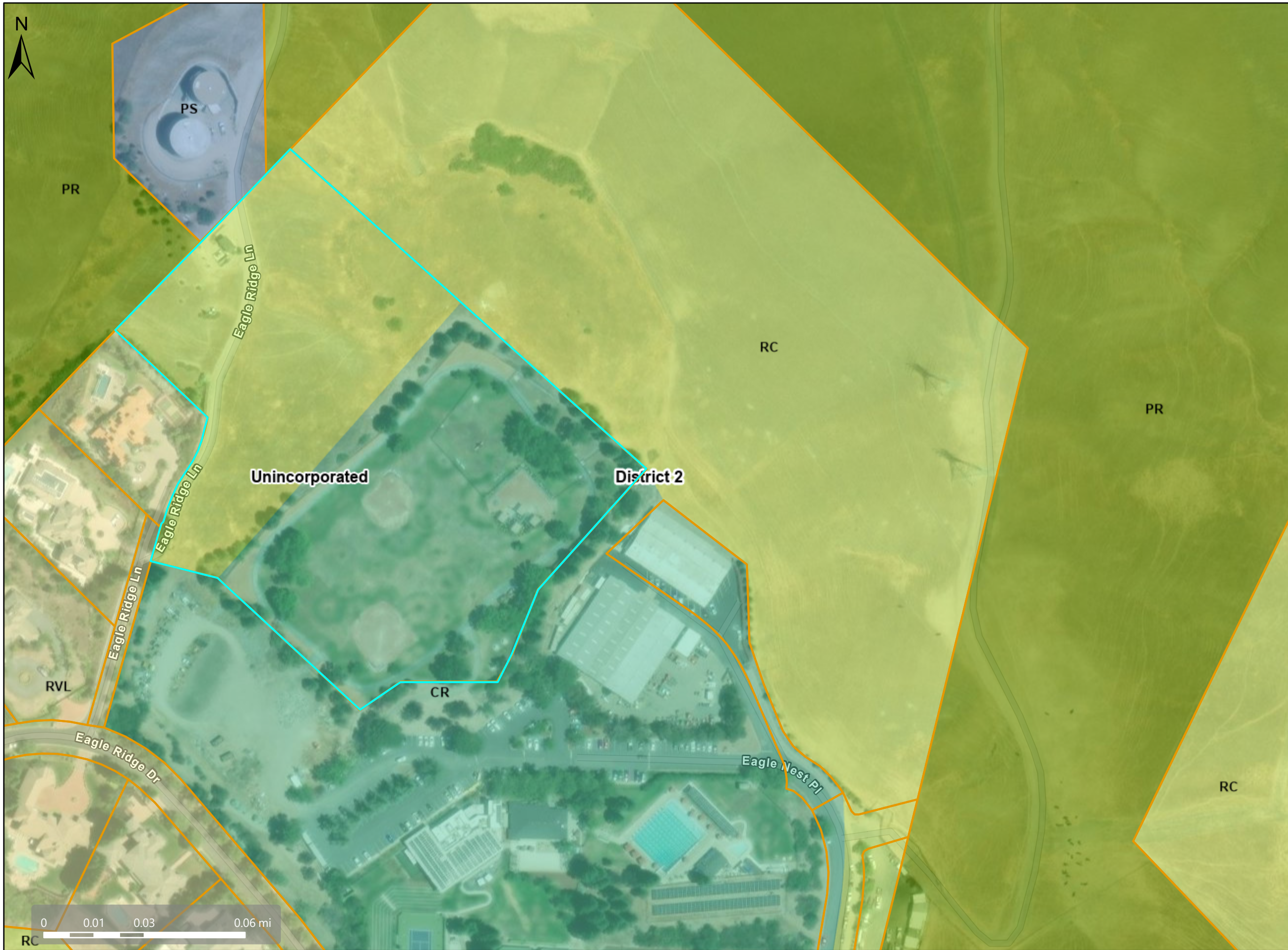


## Map Legend

- County Border
- Assessment Parcels
- Zoning
- ZONE\_OVER
  - P-1 (Planned Unit)
  - Unincorporated
  - Board of Supervisors' Districts

This map is a user generated, static output from an internet mapping application and is intended for reference use only.  
Data layers that appear on this map may or may not be accurate, current, or otherwise reliable.  
THIS MAP IS NOT TO BE USED FOR NAVIGATION.  
CCMap is maintained by Contra Costa County Department of Information Technology, County GIS.  
Data layers contained within the CCMap application are provided by various Contra Costa County Departments.  
Please direct all data inquires to the appropriate department.  
Spatial Reference  
PCS: WGS 1984 Web Mercator Auxiliary Sphere  
Datum: WGS 1984

# General Plan - RC, Resource Conservation and CR, Commercial Recreation



## Map Legend

- County Border
- Assessment Parcels
- General Plan**
- RVL (Residential Very-Low Density) ( $\leq 1$  du/na)
- PS (Public and Semi-Public)
- CR (Commercial Recreation)
- PR (Park and Recreation)
- RC (Resource Conservation)
- Unincorporated
- Board of Supervisors' Districts

This map is a user generated, static output from an internet mapping application and is intended for reference use only. Data layers that appear on this map may or may not be accurate, current, or otherwise reliable. THIS MAP IS NOT TO BE USED FOR NAVIGATION. CCMMap is maintained by Contra Costa County Department of Information Technology, County GIS. Data layers contained within the CCMMap application are provided by various Contra Costa County Departments. Please direct all data inquires to the appropriate department. Spatial Reference PCS: WGS 1984 Web Mercator Auxiliary Sphere Datum: WGS 1984