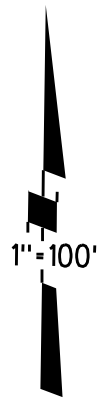
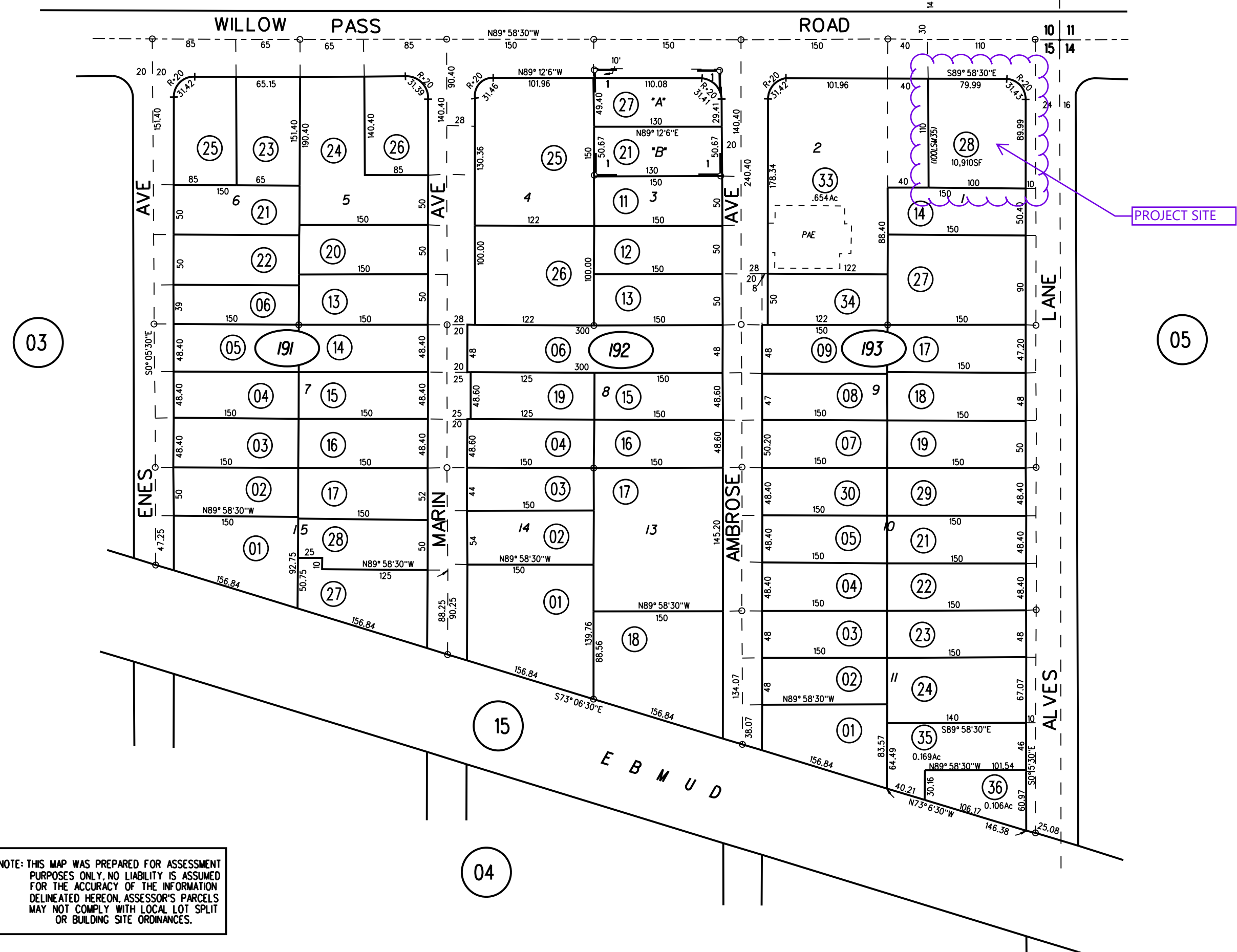


POR LOT 1 SECTION 15 T2N R1W MDBM  
ENES AMBROSE SUBDIVISION NO. 1 MB 20-561

1- 1PM48 11/2/67

PB  
98



03

05

15

04

- 191
- 192
- 193
- 35,36

10/25/19

NOTE: THIS MAP WAS PREPARED FOR ASSESSMENT PURPOSES ONLY. NO LIABILITY IS ASSUMED FOR THE ACCURACY OF THE INFORMATION DELINEATED HEREON. ASSESSOR'S PARCELS MAY NOT COMPLY WITH LOCAL LOT SPLIT OR BUILDING SITE ORDINANCES.

# Aerial Map



## Map Legend

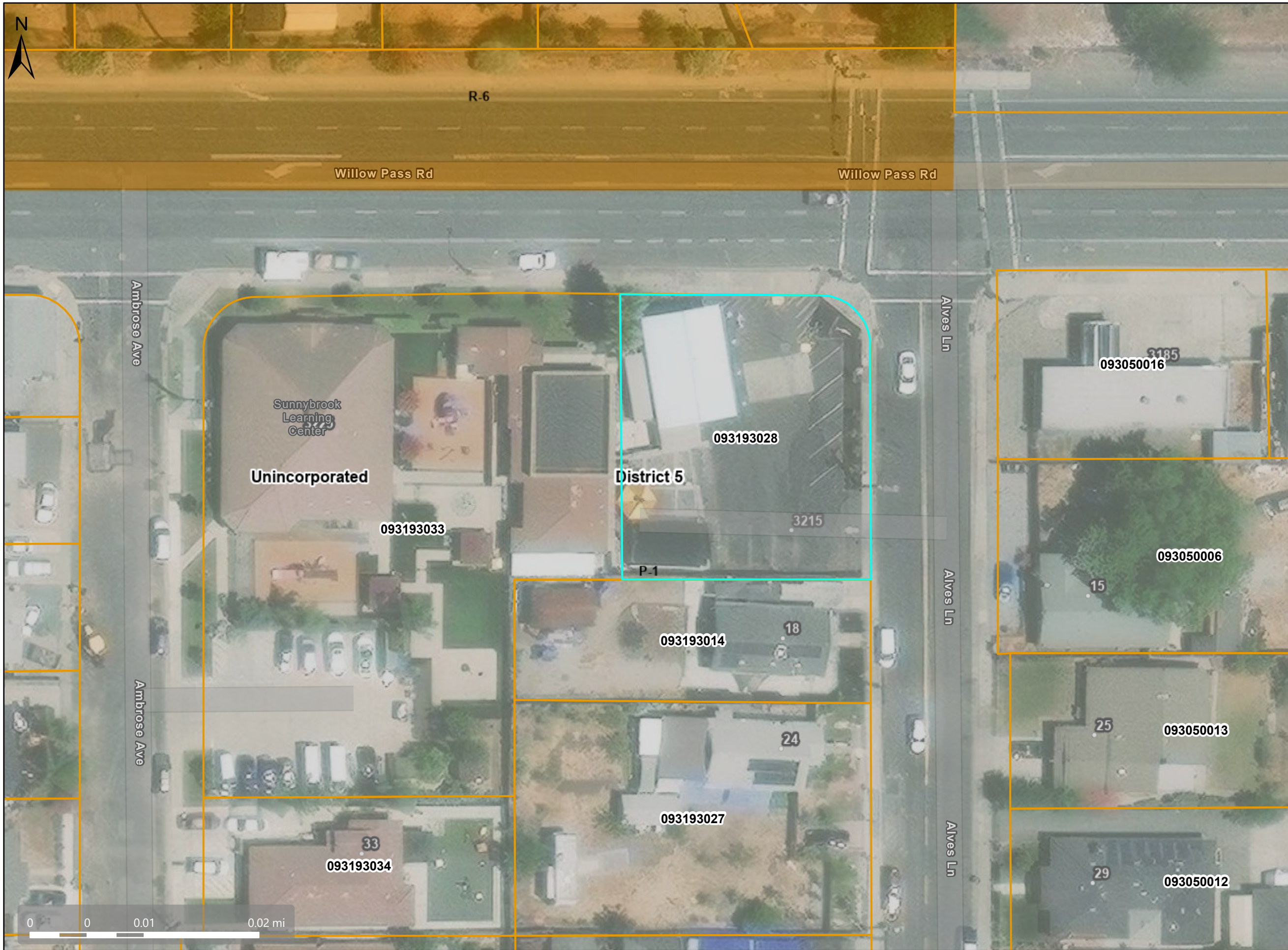
- Assessment Parcels
- Unincorporated
- Board of Supervisors' Districts
- Address Points

### Aerials 2019

- RGB
- Red: Band\_1
  - Green: Band\_2
  - Blue: Band\_3

This map is a user generated, static output from an internet mapping application and is intended for reference use only. Data layers that appear on this map may or may not be accurate, current, or otherwise reliable. THIS MAP IS NOT TO BE USED FOR NAVIGATION. CCMMap is maintained by Contra Costa County Department of Information Technology, County GIS. Data layers contained within the CCMMap application are provided by various Contra Costa County Departments. Please direct all data inquiries to the appropriate department. Spatial Reference PCS: WGS 1984 Web Mercator Auxiliary Sphere Datum: WGS 1984

# Zoning District: P-1, Planned-Unit Development Bay Point



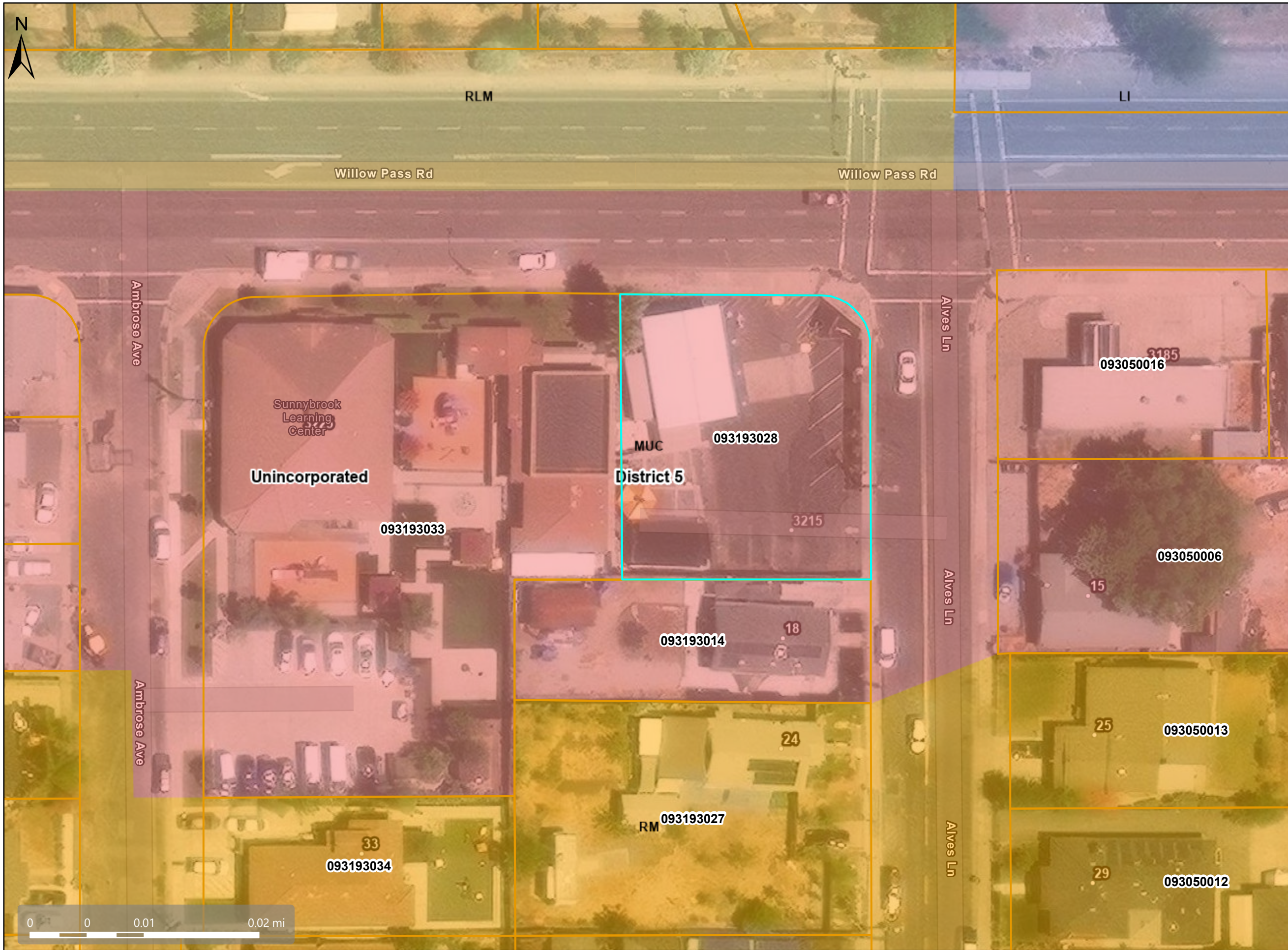
## Map Legend

- Assessment Parcels
- Zoning**
- ZONE\_OVER**
- R-6 (Single Family Residential)
- P-1 (Planned Unit)
- Unincorporated
- Supervisors' Districts
- Address Points

This map is a user generated, static output from an internet mapping application and is intended for reference use only. Data layers that appear on this map may or may not be accurate, current, or otherwise reliable. THIS MAP IS NOT TO BE USED FOR NAVIGATION. CCMAP is maintained by Contra Costa County Department of Information Technology, County GIS. Data layers contained within the CCMAP application are provided by various Contra Costa County Departments. Please direct all data inquires to the appropriate department.

Spatial Reference  
PCS: WGS 1984 Web Mercator Auxiliary Sphere  
Datum: WGS 1984

# General Plan: MUC, Mixed-Use Community Specific Density

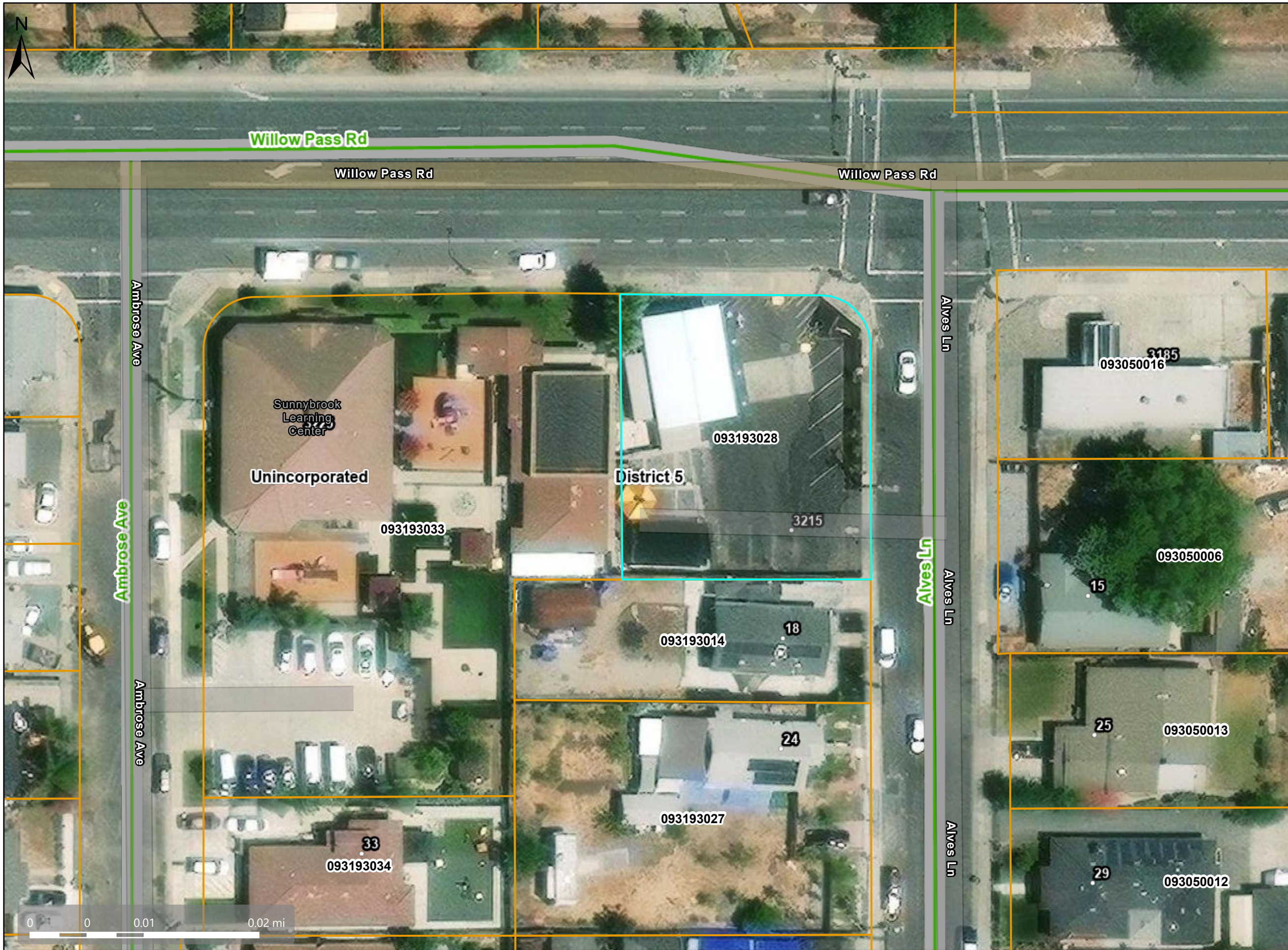


## Map Legend

- Assessment Parcels
- General Plan**
- RLM (Residential Low-Medium Density) (3-7 du/na)
- RM (Residential Medium Density) (7-17 du/na)
- MUC (Mixed-Use Community-Specific) (Variable)
- LI (Light Industry) (1.5 FAR)
- Unincorporated
- Board of Supervisors' Districts
- Address Points

This map is a user generated, static output from an internet mapping application and is intended for reference use only. Data layers that appear on this map may or may not be accurate, current, or otherwise reliable. THIS MAP IS NOT TO BE USED FOR NAVIGATION. CCMMap is maintained by Contra Costa County Department of Information Technology, County GIS. Data layers contained within the CCMMap application are provided by various Contra Costa County Departments. Please direct all data inquiries to the appropriate department. Spatial Reference PCS: WGS 1984 Web Mercator Auxiliary Sphere Datum: WGS 1984

# PWD Maintained Roads



## Map Legend

- Assessment Parcels
- Unincorporated Board of Supervisors' Districts
- Maintained Roads
- Address Points

This map is a user generated, static output from an internet mapping application and is intended for reference use only. Data layers that appear on this map may or may not be accurate, current, or otherwise reliable. THIS MAP IS NOT TO BE USED FOR NAVIGATION. CCMMap is maintained by Contra Costa County Department of Information Technology, County GIS. Data layers contained within the CCMMap application are provided by various Contra Costa County Departments. Please direct all data inquires to the appropriate department. Spatial Reference PCS: WGS 1984 Web Mercator Auxiliary Sphere Datum: WGS 1984