

# Contra Costa County

2025-26  
Adopted State  
Legislative Platform

Adopted January 21, 2025



# CONTENTS

|   |    |
|---|----|
| Introduction                                  | 3  |
| County Profile                                | 3  |
| Demographic Highlights                        | 3  |
| Governance                                    | 4  |
| Legislative Platform Purpose                  | 5  |
| Mission, Vision, and Values                   | 6  |
| Advocacy priorities                           | 7  |
| Principles and Policy Statements              | 8  |
| Administration and Finance                    | 8  |
| Agriculture and Weights & Measures            | 9  |
| Animal Services                               | 9  |
| Artificial Intelligence                       | 10 |
| Child Support Services                        | 10 |
| Climate Change                                | 10 |
| The Delta                                     | 12 |
| Economic Development                          | 13 |
| Elections                                     | 13 |
| Emergency Preparedness and Emergency Response | 13 |
| Flood Control and Clean Water                 | 15 |
| Health Care                                   | 16 |
| Homeless Services                             | 18 |
| Human Services                                | 19 |
| Child Welfare Services                        | 19 |
| Early Childhood Development                   | 20 |
| Immigration, Equity, and Inclusion            | 20 |
| Older Adult Services                          | 21 |
| Safety Net Programs                           | 21 |
| Violence Prevention                           | 22 |
| Justice Systems                               | 22 |

|  |    |
|--|----|
| Land Use/Community Development/Natural Resources _____ | 24 |
| Library Services _____                                 | 25 |
| Public Information and Transparency _____              | 25 |
| Telecommunications and Broadband _____                 | 25 |
| Transportation _____                                   | 26 |
| Veterans _____   | 28 |
| Waste Management _____                                 | 28 |
| Workforce Development _____                            | 30 |

## INTRODUCTION

### COUNTY PROFILE

One of the original 27 counties established in California in 1850, Contra Costa County is home to more than one million people, making it the ninth most populous county in the state. Physically, Contra Costa is over 733 square miles and extends from the northeastern shore of the San Francisco Bay (Bay) easterly about 50 miles to San Joaquin County. The County is bordered on the south and west by Alameda County and on the north by the Suisun and San Pablo Bays. The western and northern shorelines are industrialized, while the interior sections are suburban/residential, commercial and light industrial.



About 40 percent of the county is under the jurisdiction of 19 incorporated cities and towns, and large portions of the remaining unincorporated area are part of public park systems and a habitat conservancy. Contra Costa County is diverse, with communities that range from small agricultural places like Byron, with a density of about 200 people per square mile, to urban population centers like Contra Costa Centre, a bustling transit village with a density of 8,400 people per square mile.



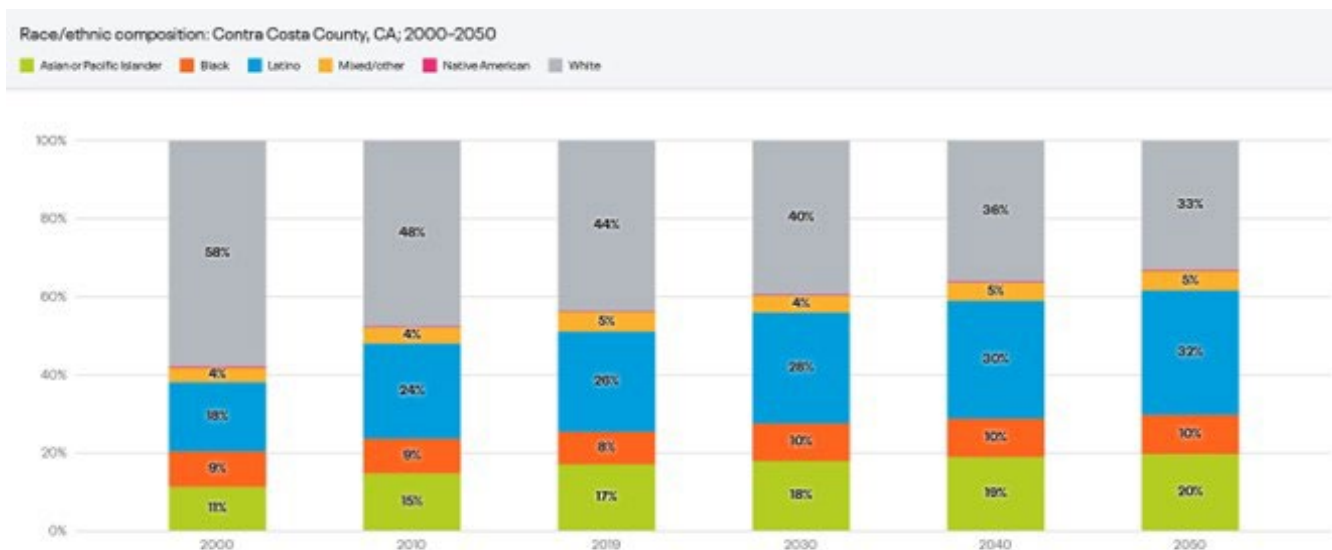
With its strategic location as **The Capital of The Northern California Mega-Region™** and easy access to suppliers and customers, Contra Costa is a business destination full of opportunity.

### DEMOGRAPHIC HIGHLIGHTS

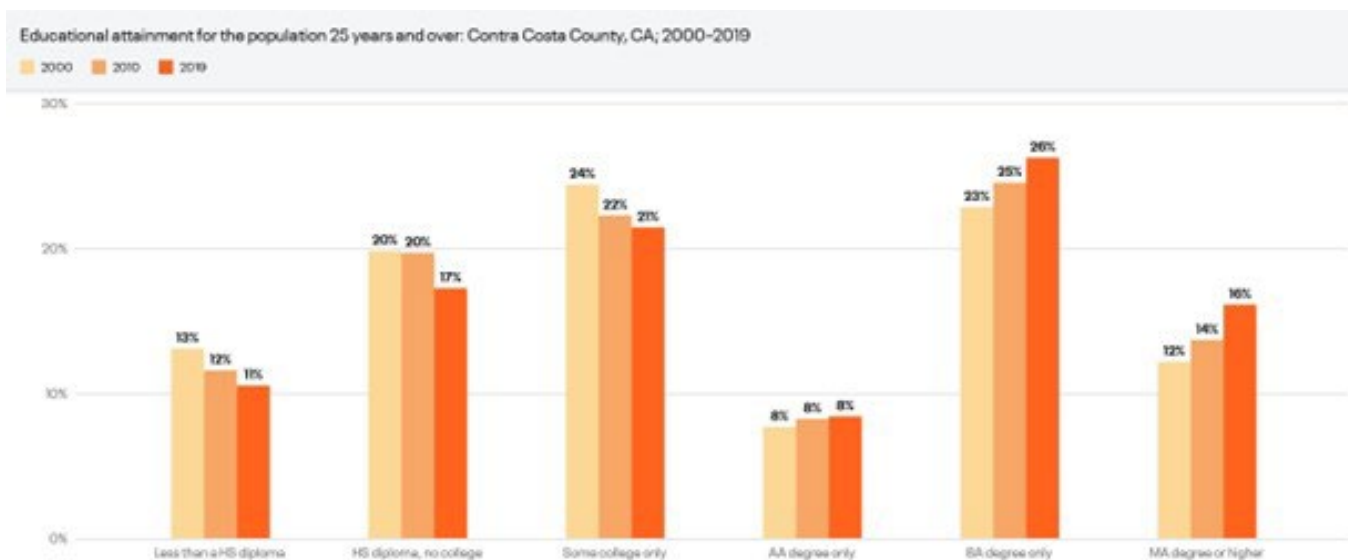
According to the 2024 State Department of Finance data, 1,146,626 people live in Contra Costa County. 15% of the total population, about 176,941 people, reside in the unincorporated areas of the county. The median age of County residents is 39 years old. Our population of people aged 60 or older is expected to grow by approximately 47% between 2020 and 2050, making this age group our fastest growing.

44% of County residents are white, with significant proportions of Asian (16.5%) and African American (8%) people. The Census tracks Latinx ethnicity separately from other populations; in total, the Hispanic/Latino population makes up approximately 26% of the total population.

Adopted January 21, 2025



Data source: U.S. Census Bureau, California Department of Finance, Deloitte, Inc. | Bay Area Equity Atlas



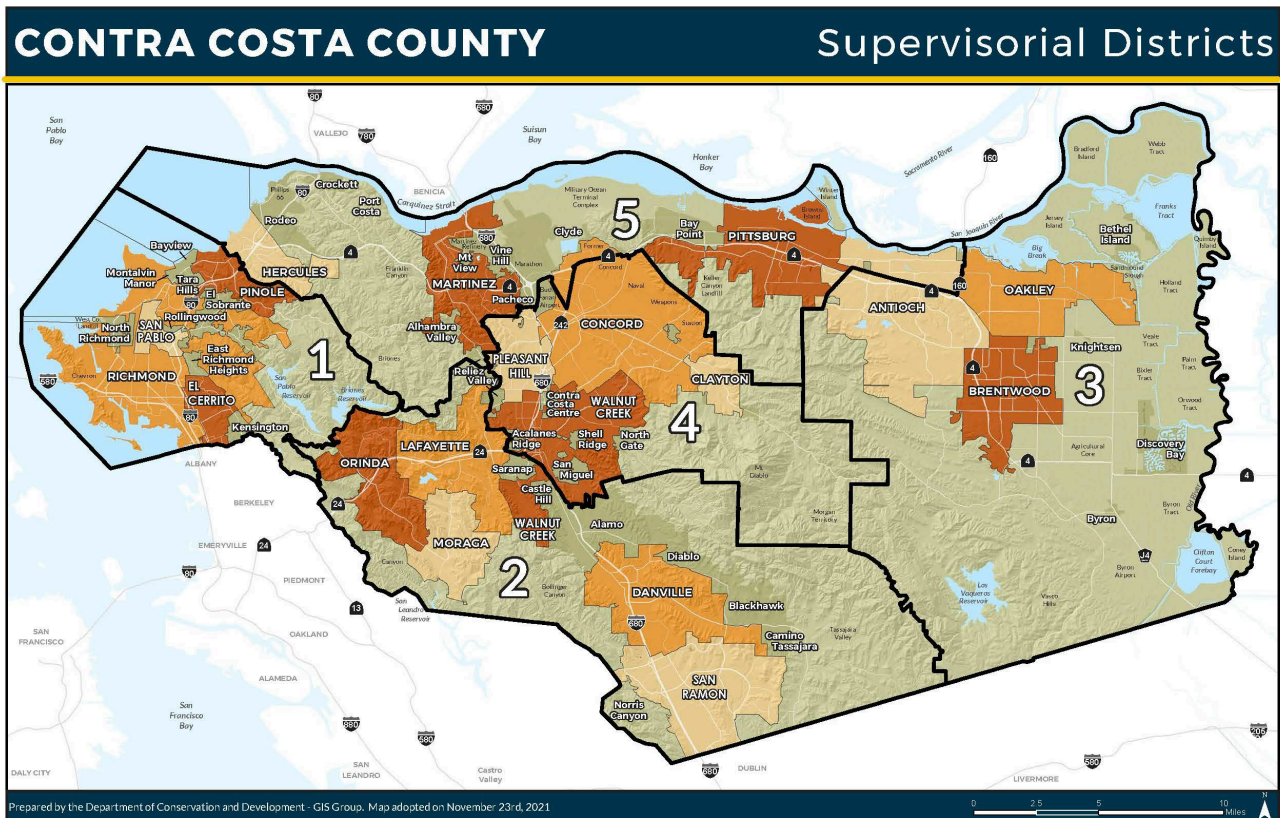
Data source: American Community Survey; Deloitte, Inc.

## GOVERNANCE

A five-member Board of Supervisors, each elected to four-year terms, serves as the legislative body of the County, which has a general law form of government. Also elected are the County Assessor, Auditor-Controller, Clerk-Recorder, District Attorney, Sheriff-Coroner and Treasurer-Tax Collector. The County Administrator, Monica Nino, is appointed by the Board and is responsible for running the day-to-day business of the County.

**Contra Costa County Board of Supervisors:**

- District I: John M. Gioia
- District II: Candace Andersen
- District III: Diane Burgis
- District IV: Ken Carlson
- District V: Shanelle Scales-Preston



**LEGISLATIVE PLATFORM PURPOSE**

The Legislative Platform establishes the priorities, principles, and policy statements of the Contra Costa County Board of Supervisors and creates the basis for its advocacy efforts, alerting our legislative partners of the greatest needs of our residents and where we need additional help. The Platform provides general direction to County departments and agencies, legislative advocates, delegation members, and the public on our positions on key policy matters that would impact the way the County does business. The Platform also includes new bill requests for which legislation is sought from Contra Costa County.

Adopted January 21, 2025

Throughout the legislative session, the County will review and take positions on various policy and State Budget items. When a recommended position is consistent with existing County policy, as adopted in the Platform, the CAO's office or department staff will prepare a County position letter for signature by the Board Chair.

Contra Costa County has also adopted a **Delta Water Platform** to identify and promote activities and policy positions that support a healthy Sacramento-San Joaquin Delta (Delta). Contra Costa County uses this Delta Water Platform to guide its actions and advocacy regarding the future of the Delta.

## MISSION, VISION, AND VALUES

Contra Costa County has adopted the following Mission, Vision and Values statement:

**Mission:** Contra Costa County is dedicated to providing public services which improve the **quality of life** of our residents and the economic viability of our businesses.

**Vision:** Contra Costa County is recognized as a world-class service organization where innovation and partnerships merge to enable our residents to enjoy a safe, healthy and prosperous life.

**Values:** Contra Costa County services people, businesses and communities. Our organization and each one of our employees value: Clients and communities; Partnerships; Quality services; Accountability; Fiscal prudence; Organizational excellence.



The graphic features the Contra Costa County seal on the left. The title "Contra Costa County" is prominently displayed in the center. Below the title, the Mission, Vision, and Values statements are presented in three columns. The bottom of the graphic is a collage of diverse people representing various community roles.

**Mission**  
Contra Costa County is dedicated to providing public services which improve the **quality of life** of our residents and the economic viability of our businesses.

**Vision**  
Contra Costa County is recognized as a **world-class service organization** where innovation and partnerships merge to enable our residents to enjoy a safe, healthy and prosperous life.

**Values**  
Contra Costa County **serves people,** businesses and communities. Our organization and each one of our employees value:

- Clients and communities
- Partnerships
- Quality Services
- Accountability
- Fiscal prudence
- Organizational excellence


## ADVOCACY PRIORITIES

- ✓ **Climate Change:** Advocate for and support funding to address climate change, and for Contra Costa County specific projects in the climate bond and through other funding sources. Funding is needed to facilitate the conversion of existing buildings for greater energy efficiency and to all-electric, promote a countywide approach to adaptation to rising water levels, conserve and restore natural resources and open space, support the development and implementation of a countywide urban forest management plan, facilitate community solar projects and associated battery storage to provide electricity to impacted communities, and build-out the active transportation network across the County.
- ✓ **Health Care, including Mental Health, Behavioral Health and Substance Use Disorder (SUD) services:** CalAIM Implementation engagement with focus on finance implications as well as impacts on county operations, programs and people served. Advocate for Behavioral Health workforce assistance and adequate, sustained funding to match new services and administration expectations. Advocate for secure, adequate, flexible, and sustained funding for CARE Court implementation, mindful of the state budget, including supportive housing.
- ✓ **Housing and Homelessness:** Although state and local governments have made significant investments in housing and homelessness programs over the last few years, California lacks a comprehensive, holistic strategy that provides sustained funding and clear levels of responsibility for all levels of government. Continue to support significant strategic investments and support funding for housing and treatment facilities for the behavioral health populations.
- ✓ **The Delta/Water and Levees:** Support efforts to protect and improve water quality, water quantity, and Delta outflow and advocate for increased freshwater flow through the Delta into the San Francisco Bay to protect and restore a healthy and sustainable ecosystem. Advocate for significant funding for western and central Delta levees to support water quality and the existing Delta water conveyance system and to protect critical infrastructure. Support multi-purpose storage options that incorporate water supply, flood control, surface water and groundwater storage, groundwater management, and ecosystem components.



## PRINCIPLES AND POLICY STATEMENTS

### ADMINISTRATION AND FINANCE

1. MAXIMIZE state, federal, and local revenues for County-run programs and services.
  2. SECURE greater flexibility over use of state and federal funds.
- 
3. LESSEN any adverse impact of state or federal policies on County costs and decision-making authority.
  4. ACHIEVE operational improvements.
  5. SUPPORT proposals that provide local governments with greater decision-making authority over the use of state or federal funds.
  6. OPPOSE proposals that would impose new unfunded mandates on the County. OPPOSE efforts of the state to avoid state mandate claims through the practice of repealing the statutes then re-enacting them. SUPPORT timely, full payments to counties by the state for programs operated on their behalf or by mandate.
7. OPPOSE any efforts to increase the County's share-of-cost, maintenance-of-effort requirements or other financing responsibility for state-mandated programs, absent new revenues sufficient to meet current and future program needs.
  8. SUPPORT the state's effort to balance its budget through actions that do not adversely affect County revenues, services, or ability to carry out its governmental responsibilities.
  9. OPPOSE any state-imposed redistribution, reduction or use restriction on general purpose revenue, sales taxes or property taxes unless financially beneficial to the County.
  10. OPPOSE efforts to limit local authority over transient occupancy taxes (TOT).
  11. SUPPORT efforts to ensure that Contra Costa County receives its fair share of state allocations.
  12. SUPPORT efforts to receive reimbursement for local tax revenues lost pursuant to sales and property tax exemptions approved by the Legislature and the State Board of Equalization.
  13. SUPPORT efforts to reform the state/local relationship in a way that makes both fiscal and programmatic sense for local government with an emphasis on maximum flexibility for counties to manage the existing and realigned discretionary programs.
  14. SUPPORT a reduction in the 2/3rd vote requirement to 55% voter approval for locally-approved special taxes that fund health, housing, education, economic, stormwater services, library, transportation and/or public safety programs and services.
  15. SUPPORT efforts to authorize counties to impose forfeitures for violations of ordinances, as authorized for cities.
  16. SUPPORT efforts to redefine the circumstances under which commercial and industrial property is reassessed to reduce the growing imbalance between the share of overall property tax paid by residential property owners versus commercial/industrial owners.
  17. SUPPORT efforts to reduce County costs for Workers' Compensation, including the ability to control excessive medical utilization and litigation.
  18. SUPPORT legislative compliance with both the intent and language of Proposition 1A (2004).

Adopted January 21, 2025

19. SUPPORT full state participation in funding the County's retiree and retiree health care unfunded liability.
20. OPPOSE the establishment of specific or stricter standards for the use of personal services contracts by counties that would make contracting with community-based organizations more difficult.
21. ENABLE local governments to offer additional opportunities for public meeting attendance, participation, and accessibility for non-legislative advisory bodies through technological means.
22. SUPPORT efforts that ensure public entities are procuring products and delivering services in a manner that progressively reduces the carbon footprint of goods and services.
23. SUPPORT efforts that maintain public record access while maintaining privacy, as it relates to Assessor Parcel Numbers (APNs).

## AGRICULTURE AND WEIGHTS & MEASURES

24. SUPPORT revisions to state law to enable the department to recover its costs of service provision for pest and disease control and eradication efforts and weights and measures programs.
25. SUPPORT revisions to State school siting policies to protect and enhance the viability of local agriculture.
26. SUPPORT legislation to facilitate the efforts by the California Department of Food and Agriculture and the Department of Boating and Waterways to survey and treat all infestations in the Delta of invasive aquatic species through integrated pest management.
27. SUPPORT legislation that preserves the integrity of the Williamson Act, eliminates abuses resulting in unjustified and premature conversions of contracted land for development, and fully restores Williamson Act subventions.
28. SUPPORT legislation that would preserve or enhance protections now afforded to consumers for commercial transactions involving commercial weighing or measuring devices (scales, meters and scanners) or computed by point-of-sale systems.

## ANIMAL SERVICES

29. SUPPORT actions to expand access to care for animal owners, including spay and neuter services.
30. SUPPORT actions to protect pet retention.
31. SUPPORT actions to address and prevent animal over-population.
32. SUPPORT actions to protect or increase local control and flexibility over the scope and level of animal services, consistent with local needs and priorities.
33. SUPPORT efforts to preserve the integrity of existing County policy relating to Animal Services (e.g., the Animal Control Ordinance and land use requirements).



## ARTIFICIAL INTELLIGENCE

34. SUPPORT engagement on policy discussions surrounding the development and use of artificial intelligence. The policies should recognize and allow for AI's beneficial uses, including by counties, but prohibit areas of potential misuse.

## CHILD SUPPORT SERVICES

35. SUPPORT recognition, promotion and enhancement of the child support program as a safety net program.
36. SUPPORT legislative efforts to make child support enforcement flexible, when guardians are coparenting cooperatively and in agreement with each other.

## CLIMATE CHANGE

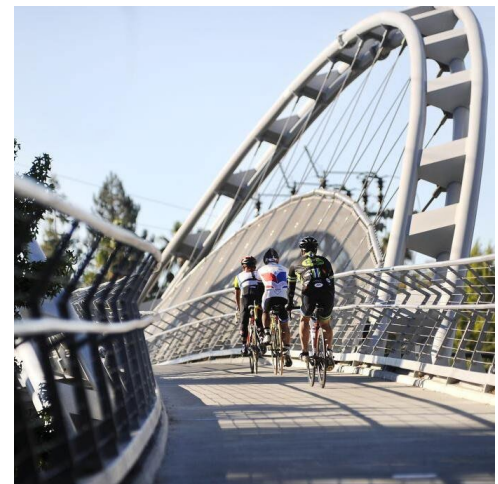
37. SUPPORT consistent funding and policy to implement the following:

- ✓ Technologies and clean energy solutions that achieve the County's climate goals, including battery energy storage and microgrids, solar and wind energy, electric vehicles (EV), EV infrastructure for charging and battery recycling;
- ✓ Energy efficiency programs that encourage whole-building retrofits and address asthma triggers in the built environment;
- ✓ Preparation of the Resilient Shoreline Plan that will identify strategies and pathways for adapting to rising sea levels in the Bay and Delta;
- ✓ Planning and implementation of community solar;
- ✓ Active transportation and green infrastructure programs;
- ✓ Job training for careers in clean energy, clean transportation, and green infrastructure.



38. SUPPORT consistent funding and policy to harden and enhance the infrastructure of public facilities, including public hospitals and health care centers, to the impacts of climate change.
39. SUPPORT consistent funding and policy to conserve, restore, and enhance the region's natural resources, including watersheds, habitats and species, to support a functioning ecosystem that sequesters carbon and is resilient to the impacts of climate change.
40. SUPPORT actions that address the impacts of climate change; support climate adaptation and resilience efforts; support the Green Business program; reduce exposure to toxic air pollutants and greenhouse gases; study and recognize the health impacts of global and regional climate change; support a transition away from leaded aviation fuels; and study the economic, workforce and social impacts of transitioning away from fossil fuels.
41. SUPPORT actions that address the disproportionate impacts that some communities bear because they are located near sources of exposure such as large industrial facilities, freeways, or transportation corridors and/or live in proximity to areas vulnerable to sea level rise, inland flooding, and other climate-related impacts.

42. ENSURE that the implementation of AB 32 and successor bills results in harmony between the greenhouse gas reduction target created by the Air Resources Board for each regional/local agency, data that reveals disparity in population health status, the housing needs numbers provided by the state Department of Housing and Community Development, and the Sustainable Communities Strategy developed through the Regional Transportation Plan processes.
43. SUPPORT efforts that favor allocation of funding and infrastructure from the California Climate Investments Program to jurisdictions within whose boundaries are the largest emitters of greenhouse gas, have vulnerable and/or disadvantaged communities that are disproportionately affected by climate change and environmental pollution, have Natural Community Conservation Plans or similar land conservation efforts that will address climate change, and have demonstrated a local commitment to climate protection.
44. SUPPORT California Climate Investments funding for the conservation of natural lands, parks and open space through fee title acquisition as well as easements.
45. SUPPORT efforts to expand eligible expenditures of the Climate Investments to investments in accessible transit/transportation systems (serving seniors, disabled, and veterans), and in investments in infrastructure and programs to promote active transportation, particularly bicycling and walking including the Iron Horse corridor and other trails.
46. SUPPORT investments in active transportation infrastructure along the Iron Horse Corridor, including double-tracking to create an adjacent, paved path for higher speed cyclists, and enhanced connections to transit, schools, jobs, and other trail systems.
47. OPPOSE changes to the California Environmental Protection Agency's protocols for designating disadvantaged communities which result in a reduction in the number or size of disadvantaged communities in Contra Costa County prioritized for receipt of California Climate Investment funds.
48. SUPPORT efforts to ensure life-cycle costs are considered when planning new projects.
49. SUPPORT the autonomy of community choice aggregators (CCAs) in policymaking and decision-making. OPPOSE legislation and regulatory policies that unfairly disadvantage CCAs or CCA customers or reduce or undermine local decision-making autonomy by the CCA.
50. SUPPORT continuing development of local renewable energy resources and supply, including hydrogen fuel cells and storage, and the protection of local autonomy to administer energy efficiency programs and install and utilize integrated distributed energy resources, and SUPPORT effective leveraging of energy efficiency programs tailored to address local needs and concerns.
51. SUPPORT complete transparency of all energy procurement practices, stranded costs, and departing load charges; fair competition in statewide energy markets for community choice aggregators (CCAs) and municipal or other publicly owned utilities; legislation and regulatory



policies that protect CCA customers from improper cost allocation; and OPPOSE legislation that conflicts with or diminishes CCA procurement autonomy.

52. SUPPORT requirements for investor-owned and public energy utilities to provide local governments with energy usage data for all facilities in their jurisdictions for purposes of developing inventories of greenhouse gas emissions within their boundaries.
53. SUPPORT requirements and funding for greenhouse gas emission inventories to be prepared for local governments on a regular basis.
54. SUPPORT resources for local governments to address impacts of climate change caused by a changing climate, such as extreme weather, wildfire smoke, sea level rise, flooding, drought, groundwater rise, fires, and power disruptions.
55. SUPPORT actions that cost-effectively reduce exposure to criteria air pollutants and toxic air pollutants.

## THE DELTA

56. PROTECT and RESTORE a healthy sustainable Delta ecosystem, including adequate water quality, inflow and outflow, and water supply, to support fisheries, wildlife and habitat and control invasive species.
57. RESPECT and SAFEGUARD Delta Counties' responsibilities related to land use, water resources, flood management, tax revenues, public health and safety, economic development, agricultural stability, recreation, and environmental protection in any projects, policies, or operations.
58. SUPPORT rehabilitation, improvement, and maintenance of levees throughout the Delta.
59. SUPPORT efforts that further the obligation of all users of water flowing through the Delta to restore, maintain, improve, and protect this shared resource and referred to as the "Delta pool" concept.



60. REPRESENT and include local government in any governance structures for the Delta.
61. OPPOSE isolated conveyance.

## ECONOMIC DEVELOPMENT

- 62. ADVOCATE for jobs-oriented incentive programs for jurisdictions that have a significant jobs/housing imbalance or rely on industries the state plans to transition.
- 63. SUPPORT an amendment to the California Competes Tax Credit program guidelines to consider qualifying low-income census tracts within unincorporated areas of a county in the enhanced scoring category.

## ELECTIONS

- 64. SUPPORT full state reimbursement for state mandates imposed upon local registrars by the Secretary of State, including special state elections, signature verification and petition efforts, special elections and redistricting activities.
- 65. SUPPORT legislation to assist and fully fund counties in the effective implementation of State-mandated changes in the elections process and administration including but not limited to expanded access to language assistance.
- 66. OPPOSE any legislation that imposes specific and impractical requirements regarding equipment, procedures, and personnel responsibilities for election administration.
- 67. OPPOSE any legislation that requires any specific methodologies for post-election audits.
- 68. SUPPORT policies that facilitate secure elections.
- 69. SUPPORT legislation that increases protections against interfering with the casting of ballots at polling places or by mail, including increasing fines and/or penalties for practices that attempt to impede the voting process or intimidate voters.
- 70. SUPPORT legislation to protect election workers from harassment and to ensure the physical safety of workplaces for election administrators.
- 71. SUPPORT legislation to allow for the secure and effective use of new technologies available in the field of election administration and to provide adequate funding for both deployment and maintenance of new technologies.
- 72. SUPPORT proposals that provide elections officials flexibility on the availability of in-person voting locations and the recruitment of poll workers in response to emergency orders.



## EMERGENCY PREPAREDNESS AND EMERGENCY RESPONSE

- 73. SUPPORT efforts to improve and expand interoperable public safety radio systems.
- 74. SUPPORT legislation that will improve forest management and emergency communications systems.
- 75. SUPPORT increased funding for defensible space inspections, community wildfire risk mitigation, and for hardening of existing homes from wildfire exposure.
- 76. SUPPORT a sales tax exemption for public safety related apparatus and/or equipment over a certain value (e.g., \$250,000).

- 77. SUPPORT exemptions from CEQA for wildfire risk mitigation projects, natural disaster preparedness projects, and Essential Services Facilities (ESF) such as fire stations, and exemptions from fees and air quality limitations for emergency generators at fire stations.
- 78. SUPPORT legislation and regulatory actions that would streamline the state and local wildfire mitigation area designation process, including fire hazard severity zone mapping that impacts insurance rates, that allow for input from local governments and fire professionals and clarifies roles and responsibilities for federal, state, and local agencies.
- 79. SUPPORT increased funding for services associated with disaster response, including mutual aid provided for wildfires, floods, or other such incidents.



80. SUPPORT legislation and funding for research on the adverse health impacts, including increased rates of cancer, faced by firefighters and emerging technologies that can help lower the long-term health impacts.

81. SUPPORT legislation that provides supports for the mental health of public safety personnel, including law enforcement and firefighters, such as peer support and mental health counseling.

82. SUPPORT a permanent resolution to the reimbursement for air ambulance providers.

83. ENSURE that development impact fees provide adequate funding for public safety facilities, including law enforcement, fire, and emergency response, along with ongoing maintenance and operations.

84. SUPPORT legislation to improve telephone and cellular access or back-up during emergencies, and improvements to the community warning systems and evacuation map technologies.

85. SUPPORT actions that increase the safety of the shipment of hazardous materials by pipeline through better monitoring, technical seismic vulnerability studies, leak detection, operational practices, and equipment.

86. SUPPORT California legislation requiring all wireless carriers to participate in the Wireless Emergency Alerts (WEA) program to ensure universal public access to life-saving notifications.



- 87. SUPPORT legislation requiring phone carriers to maintain access to Plain Old Telephone Service (POTS) to ensure reliable communication for vulnerable populations, emergency services, and areas with limited broadband access.
- 88. SUPPORT state funding and policy initiatives to develop and deploy innovative emergency alert technologies, improving the reliability and inclusiveness of disaster communication systems.
- 89. SUPPORT policies and funding that will ensure equitable access to essential, life-saving information for all individuals during emergencies.
- 90. SUPPORT policies that establish weather-related disasters as reimbursable events through existing recovery programs.

91. ENSURE that new emergency and disaster response legislation provides adequate funding and guidance to support legislative initiatives.
92. SUPPORT legislation that provides funding and resources to enhance local emergency management organizations.
93. SUPPORT more authority and resources for Community Emergency Response Training (CERT) to support volunteer training and community preparedness/resiliency programs.
94. SUPPORT legislation to maintain or strengthen the authority and governing role of counties and their local emergency medical services agencies to plan, implement, and evaluate all aspects and components of the emergency medical services system.
95. SUPPORT legislation to maintain or strengthen the administration and medical control of emergency medical services, pre-hospital emergency medical care, and ambulance services at the county level.
96. SUPPORT legislation that would enable paramedics and emergency medical technicians responding to 911 calls to transport patients to the most appropriate facility, such as, mental health urgent care centers or sobering centers, subject to the County's Emergency Medical Services Policy.
97. OPPOSE legislation that would threaten or weaken the authority and governing role of counties or local medical control over the locally coordinated and standardized provision of emergency medical services, including changes to how operating area exclusivity is conferred.
98. OPPOSE legislation that may result in the fragmentation of the emergency medical services systems, prehospital emergency medical care, and ambulance services.
99. OPPOSE legislation that would prevent or weaken the ability of the LEMSA Medical Director to assure medical control of the EMS system.

## FLOOD CONTROL AND CLEAN WATER

100. SUPPORT legislation that would improve integration of planning between member agencies of an Integrated Regional Water Management Planning group, thereby increasing multi-benefit projects.
101. SUPPORT increased funding to comply with clean water requirements imposed by regional bodies.
102. SUPPORT legislation that would require Metropolitan Planning Organizations to integrate local and regional stormwater needs into their regional transportation planning process.





## HEALTH CARE

103. SUPPORT legislation and administrative policy changes that will continue into the future the flexibilities in use of Telehealth services that have so benefited our community during the Public Health Emergency.
104. SUPPORT state action to increase health care access and affordability.
105. SUPPORT Medi-Cal reimbursement rate increases to incentivize providers to participate in the program. Also, SUPPORT Medi-Cal reimbursement rate increases to provide quality reproductive health care services.
106. SUPPORT reimbursement for a maximum of 2 visits taking place on the same day at one location if the patient suffers illness/ injury requiring additional diagnosis/ treatment, or if the patient has a medical visit and mental health or dental visit.
107. SUPPORT actions that address provider shortages (including physicians, particularly specialists, and nurses). Innovative programs, such as loan forgiveness programs, should be expanded.
108. SUPPORT legislation that increases Medicare Graduate Medical Education (GME) physician residency training positions to address the physician workforce shortage.
109. SUPPORT actions that implement comprehensive systems of care, including case management, for frequent users of emergency care and those with chronic diseases and/or dual (or multiple) diagnoses.



110. SUPPORT actions that provide sufficient time for detailed data gathering of current safety net funding in the system and the impact of any redirection of funds on remaining county responsibilities.

111. SUPPORT actions to implement a Medi-Cal waiver in a manner that maximizes the drawdown of federal funds for services and facilities, provides flexibility, and ensures that counties receive their fair share of funding.

112. SUPPORT actions to extend Drug Medi-Cal and Minor Consent Medi-Cal Coverage to incarcerated youths, many of whom are in custody due to drug related crimes.

113. SUPPORT coverage of medically necessary alcohol and substance use related disorder treatment at the same level as other medical conditions.

114. SUPPORT legislation that extends the restrictions and prohibitions against the smoking of, and exposure to, tobacco products, and the promotion of cessation among young people and adults.

115. SUPPORT actions that further align a statewide regulatory framework for the commercial cannabis industry and that continue to authorize local jurisdictions to adopt more restrictive measures to protect the health, safety and welfare of their residents. OPPOSE legislation and state regulation that seeks to weaken or eliminate local control over the commercial cannabis industry.

116. SUPPORT necessary County infrastructure and adequate funding related to education, regulation, testing and enforcement functions associated with cannabis regulatory controls.
117. SUPPORT restricting the sale and use of powdered alcohol and other similar products marketed to youth; restrictions on advertising of cannabis products targeting youth and near places frequented by youth or alcohol and other drug treatment facilities.
118. SUPPORT legislation that extends the restrictions and prohibitions against the smoking of, and exposure to, cannabis products in various places, including, but not limited to, places of employment, school campuses, public buildings, day care facilities, multi-family housing, health facilities, alcohol and other drug treatment facilities, and homeless shelters.
119. SUPPORT actions to seek a state ban on electronic devices that deliver flavored e-liquids as well as the e-juice itself.
120. SUPPORT actions aimed at reducing the misuse of prescription drugs, most especially opioids, and increase prevention and treatment of opioid disorders to eliminate overdoses and combat the opioid epidemic.
121. SUPPORT population-based chronic disease prevention efforts such as the creation and funding of a State Wellness Trust.
122. SUPPORT developing a workforce with gerontological expertise to manage the exponential growth in the chronically ill aging population.
123. SUPPORT efforts that would advance a Health-In-All-Policies approach to policy work done across the County. This implies consideration of how health is influenced by the built environment and a connection with land use planning and development.
124. SUPPORT ongoing study of the health impacts of global and regional climate change and ongoing countywide mitigation and adaptation efforts.
125. SUPPORT actions that would preserve the nature and quality and continuity of care associated with safety net services historically provided at the local level, such as the California Children's Services (CCS) and Child Health and Disability Prevention (CHDP) programs.
126. SUPPORT actions that promote aging in place through the utilization of long-term supports and services and caregiver support services.
127. SUPPORT funding, streamlined processes, and greater flexibility for use of state and federal funding to respond to Public Health Emergency Preparedness initiatives including Pandemic Influenza, emerging diseases, and continued funding for all categories related to Public Health Preparedness.
128. SUPPORT Local Public Health Departments as an authorized provider for direct billing reimbursement related to the provision of Immunization, Family Planning, HIV, STD and TB services.

129. SUPPORT the reversal of the pre-emption language regarding local Menu-Labeling that is included in the Affordable Care Act.
130. SUPPORT efforts to strengthen needle exchange programs as part of an overall program to combat the spread of HIV and other diseases.
131. SUPPORT legislative efforts to reduce or eliminate lead and toxic substances in consumer products, particularly those used by infants and children.
132. SUPPORT funding, policy and programs dedicated to suicide, injury and violence prevention.
133. SUPPORT legislation to tax certain beverages that contain added sugars.
134. SUPPORT efforts that support healthy meals, adequate meal time, and increased physical activity/education for school-age children.
135. SUPPORT efforts to address “food deserts” so that healthy food such as fruits, vegetables, and produce are sold at retail stores throughout all regions of the County and encourage healthy food consumption.
136. SUPPORT funding that sustains and expands non-infrastructure *Safe Routes to School* programs that educate students, parents, and school staff about safe walking and bicycling to school.
137. SUPPORT efforts to address the underlying determinants of health and health equity, such as housing and prevention of displacement, educational attainment and livable wage jobs, and accessible transportation.
138. SUPPORT efforts and funding for screening for all forms of interpersonal violence by medical providers.



## HOMELESS SERVICES

139. SUPPORT the continuation and expansion of funding for fair and equitable affordable housing, homelessness assistance and prevention programs, and strategic local and regional responses to homelessness that promote transparency, equity and data informed decision-making and enhance

access to resources that support the County's compliance with federal and state anti-homelessness and anti-poverty initiatives and requirements.

140. SUPPORT increasing and maintaining affordable housing stock and housing stability by way of supporting funding, policy, or regulations that promote fair and equitable housing for the most vulnerable low, very low, and extremely low-income households, including the acquisition, production and preservation of various housing types and the protection of stable housing for vulnerable persons experiencing homelessness.

141. SUPPORT removal of barriers in planning processes, regulatory frameworks, funding programs, healthcare access, and policy to promote increased equity, innovation, transparency and data-driven approaches to addressing homelessness and housing affordability, with the goals of increasing affordable housing and eliminating discrimination and disparate treatment of individuals based on race, ethnicity, gender, gender identity, sexual orientation, ability, housing status, income, or other household characteristics.

142. SUPPORT a wide variety of housing types and formats, for all persons regardless of personal characteristic or status, and actively promote the equitable distribution and access to affordable units and holistic services, in line with evidence-based practices, to ensure the elimination of discrimination and disparate treatment of individuals, particularly vulnerable individuals and those from communities of color.

143. SUPPORT increasing funding, policy, and regulations for disaster planning and relief efforts that allow the County and the County's homeless system to plan for and equitably respond to disasters and pandemics, including for purposes of supporting the health and safety of providers and persons experiencing homelessness, particularly the most vulnerable and those from communities of color.



## HUMAN SERVICES

### CHILD WELFARE SERVICES

144. SUPPORT the development or designation of safe, appropriate placement options and congregate care reform for foster youth with acute complex needs.

145. SUPPORT initiatives which would expand benefits and support for reunified families.

146. SUPPORT restorative justice and healing-centered framework initiatives and programs that seek to eliminate the school-to-prison pipeline and end the criminalization of youth.

147. SUPPORT funding and initiatives to support children's mental health and studies on the long-term impacts of COVID-19 on the physical and mental health of adults and children.

Adopted January 21, 2025

## EARLY CHILDHOOD DEVELOPMENT

**148.** SUPPORT legislation to expand early childcare, education, mental health, developmental screenings, and other comprehensive services and holistic approaches.



**149.** SUPPORT early childhood education, including preschool enrichment programs with family engagement to provide quality care and parent education in early life.

**150.** SUPPORT policies and systems changes to foster holistic family and early childhood development and resilience.

**151.** SUPPORT early childhood home visitation to enhance parenting skills and promote health child development.

**152.** SUPPORT early childhood mental health and trauma prevention programs.

## IMMIGRATION, EQUITY, AND INCLUSION

**153.** SUPPORT the continued expansion of benefits and services for immigrants, refugees, and asylum seekers regardless of immigration status.

**154.** SUPPORT efforts to expand full scope Medi-Cal to include Deferred Action for Childhood Arrivals (DACA) youth, seniors, and all remaining uninsured residents regardless of their immigration status.

**155.** SUPPORT increased language access and culturally responsive social services for all immigrants.

**156.** SUPPORT actions to assist immigrants, refugees, and other seeking asylum who experience domestic or sexual assault to receive resources, including services to prevent homelessness, labor and human trafficking, and legal resources to help attain citizenship.



**157.** SUPPORT education and outreach to engage immigrants, refugees, asylum-seekers, and non-legal status communities to help them access benefits, mitigate concerns around public charge, and address other issues related to their enrollment to safety net programs.

**158.** OPPOSE any changes that may penalize immigrants for using vital public benefits they are legally allowed to access. OPPOSE any changes to sponsor requirements which add limiting threshold criteria.

**159.** SUPPORT day labor programs and other workforce development programs that serve immigrant communities and undocumented workers.

**160.** SUPPORT actions that would eliminate systemic racism and structural inequities, including efforts to refocus Medi-Cal and other social safety net programs toward reducing health disparities.

## OLDER ADULT SERVICES

- 161. SUPPORT actions that promote individual choice by easing access to In Home Supportive Services (IHSS). SUPPORT funding to reduce the intake wait-time for eligibility and delivery of in-home care.
- 162. SUPPORT allowing counties to use alternative IHSS reassessment approaches including, but not limited to, telephonic reassessments.
- 163. SUPPORT programs that increase seniors' access to technology and internet connection.
- 164. SUPPORT fully funding the administration of IHSS, including statewide labor bargaining and negotiations..
- 165. SUPPORT funding to recruit, train, and retain IHSS home health care workers. SUPPORT increased state investment in livable wages for IHSS care providers.
- 166. SUPPORT actions to provide respite for caregivers.
- 167. SUPPORT the creation of funding opportunities and policies which promote the development of aging-friendly communities.
- 168. SUPPORT actions that strengthen the capacity and funding of Adult Protective Services (APS) to address all forms of abuse and neglect.
- 169. SUPPORT funding to expand services for older adults and people with disabilities.
- 170. SUPPORT actions to promote the safety of social workers and all in-home care providers.
- 171. SUPPORT funding and policies to provide older adults with holistic, culturally appropriate services and treatment modalities that support well-being, health, and mental health.
- 172. SUPPORT actions that promote safety in skilled nursing and other long-term care facilities for older adults.



## SAFETY NET PROGRAMS

- 173. OPPOSE actions that result in reduced level of services to families, children, adults and seniors, or that lead to preemption of local control.
- 174. SUPPORT continuous investment in safety net programs, including the California Earned Income Tax Credit (Cal EITC) and the Supplemental Security Income/State Supplementary Payment (SSI/SSP) Program.
- 175. SUPPORT continued flexibilities and waivers in benefits program administration for the benefit of individuals and families who are struggling.
- 176. SUPPORT actions to improve and expand access to food, including emergency food assistance networks (e.g. local



food banks and food pantries), increasing the amount and flexibility of CalFresh and other local assistance programs.

177. SUPPORT actions to streamline benefit applications, align verifications between programs, and have the same appointment for multiple applications.
178. SUPPORT the ease of data sharing and coordination of care across safety net programs, including those administered by the Health Department, such as WIC.
179. SUPPORT actions to ease access to Medi-Cal and its services.
180. SUPPORT actions which would expand funding, grant allotments, and eligibility to CalWORKS, and expand CalWORKS supportive services.
181. SUPPORT increased access to employment training programs and subsidized work programs for vulnerable populations, including access to community colleges.
182. SUPPORT establishing a General Assistance Program with a state share of funding.
183. SUPPORT actions to create whole family care through a more comprehensive safety net of services that enable families to be stable and have economic opportunities.
184. SUPPORT research that describes and assesses local service needs and gaps.

---

## VIOLENCE PREVENTION

185. SUPPORT actions that seek to address the impact of gun violence, community violence, and interpersonal violence, including but not limited to, domestic violence, family violence, stalking, sexual assault, all forms of human trafficking, elder abuse, dependent adult abuse, and child abuse.
186. SUPPORT actions that seek to prevent the underlying and root causes of all forms of violence and invest in upstream strategies.
187. SUPPORT actions to increase cross-agency and cross-system collaboration on cases involving violence, including the sharing of confidential or protected information in multidisciplinary team settings.
188. SUPPORT actions to reduce the effects of toxic stress, trauma, and adverse childhood experiences.
189. SUPPORT alternatives to the criminal justice system that center community and survivor needs, including those that focus on accountability between a person who has caused harm and the people affected by the harm and those that address the root causes of harm while upholding the dignity of those who have caused harm.
190. SUPPORT actions to support successful transition from incarceration and detention to the community.
191. SUPPORT efforts that provide funding for and increase access to emergency shelters, transitional housing, affordable housing, and home ownership for survivors of all forms of interpersonal violence.
192. SUPPORT efforts and legislation that increases funding for building equity and promotes data practices that uphold truth, learning, consent, and accountability, in the data collection and research on the effectiveness of interpersonal violence prevention, intervention, and innovation strategies.
193. SUPPORT efforts that prevent and remedy the impact of financial and economic abuse/exploitation and that increase economic opportunity and security for survivors of all forms of interpersonal violence.

## JUSTICE SYSTEMS

194. SUPPORT justice reform efforts that reduce racial and ethnic disparities.
195. SUPPORT justice reform efforts that reduce barriers to success for system-involved youth and adults. SUPPORT legislation that encourages and increases youth engagement.
196. SUPPORT justice reform legislation that recognizes adolescent brain development and the unique needs of transition-aged youth.
197. SUPPORT an ongoing commitment to investing in community-based organizations and community alternatives to incarceration and detention, as well as prevention.
198. SUPPORT legislation to restore pretrial detainee access to federal health benefits.
199. SUPPORT local flexibility and funding to implement justice prevention and diversion programs, including expanding the use of and funding for diversion for individuals charged with criminal offenses.
200. SUPPORT diversion and community-based restoration to address the incompetent to stand trial (IST) waitlist, including by expanding diversion and community-based restoration to reduce the felony IST waitlist.
201. OPPOSE legislation that would shift the responsibility of parolees from the state to the counties without adequate notification, documentation and funding.
202. SUPPORT legislation that will help counties implement 2011 Public Safety Realignment as long as the proposal would provide for county flexibility, eliminate redundant or unnecessary reporting, and would not transfer more responsibility without funding.
203. SUPPORT legislation that advocates for State General Fund backfill of lost revenues of 2011 Public Safety Realignment to ensure the provisions of core services.
204. SUPPORT funding for rehabilitation and treatment for incarcerated individuals. Seek funding to support in custody programming and facilities to enhance the County's rehabilitation and treatment programs for incarcerated individuals with mental health and substance use disorders.
205. SUPPORT legislation and efforts that remove barriers and obstacles for reentry for justice involved individuals to obtain and retain employment, housing, and other supportive services.
206. SUPPORT legislation for the establishment and sustainable funding for Reentry Housing and Workforce Development Programs.
207. SUPPORT legislation that will combat the negative impact that human trafficking has on victims in our communities, including the impact that this activity has on a range of County services and supports, and support additional tools, resources and funding to help counties address this growing problem.
208. SUPPORT legislative reform of current bail provisions that will replace reliance on money bail with a system that incorporates evidence-based pretrial release decisions. ADVOCATE for funding for any new or revised responsibilities for counties, including the assessment and supervision of people charged with crimes.
209. SUPPORT funding for pre-trial services community-based supervision of those charged with crimes. Advocate to expand funding for pre-trial services via an increase in direct county allocations.
210. SUPPORT increased CARE Court Funding for counties and adequate, flexible, and sustained funding across all impacted local agencies to support counties' efforts to implement the Community





Assistance, Recovery, and Empowerment (CARE) Act and to amend existing law to ensure its successful implementation.

211. SUPPORT legislation to require equitable grant funding to Public Defender offices for the defense and protection of clients equivalent to the grant funding provided for the investigation and prosecution of crime.
212. SUPPORT legislation or administrative action to fully fund optimal workloads for public defenders, that address historical funding imbalances, and that provide grants to improve the provision of indigent defense services.
213. SUPPORT legislation for increased transparency related to law enforcement misconduct and POST decertification actions.
214. SUPPORT legislation that provides a solution to addressing the problems of metal theft and abandoned and trespassing vessels and ground tackle.
215. SUPPORT legislation and funding to prevent, address, and prosecute those involved with organized retail theft.

#### LAND USE/COMMUNITY DEVELOPMENT/NATURAL RESOURCES

216. SUPPORT the production, protection, and preservation of low and moderate income housing by: 1) increasing access to state and other financing sources, 2) facilitating local and regional efforts to develop new funding, and 3) incentivizing local agencies to promote such housing in their policies and actions rather than limiting their authority based on housing production numbers that are outside their control.
217. MAINTAIN local agency land use authority.
218. SUPPORT ways to streamline overall compliance with State legislation, while opposing efforts to expedite a particular development project.
219. ENSURE Contra Costa residents of all income categories have access to adequate housing.
220. GROW more jobs countywide, particularly in those parts of the County with the longest commutes and most acute jobs-housing imbalance.
221. SUPPORT historically under-invested communities in their equitable economic growth.
222. IDENTIFY new or enhanced revenue to support residents' quality of life.
223. ESTABLISH, fund and support locally-controlled resource permitting to streamline economic development activities and conserve, restore, and recover species and the habitats upon which they depend, natural resources, watersheds and open space.
224. SUPPORT legislative actions that reduce the risk to students from the accidental release of hazardous materials by requiring risk assessments that account for all sources of hazardous materials as part of school siting and rebuilding decisions.
225. SUPPORT legislative actions to evaluate, clean up, and redevelop contaminated sites.



## LIBRARY SERVICES

- 226. SUPPORT State funding for the operation of public libraries, including but not limited to, full funding of the California Research and Education Network (CalREN), Lunch at the Library, Zip Books, and the Pacific Library Partnership.
- 227. SUPPORT State bonds and other state funding for public library renovation and construction.
- 228. SUPPORT the California Library Literacy and English Acquisition Services Program, which provides matching funds for public library adult literacy programs that offer free, confidential, one-on-one basic literacy instruction.
- 229. SUPPORT legislation that allows libraries to purchase eBooks and e-audiobooks at the same price as consumers.
- 230. SUPPORT early literacy, school readiness, adult literacy, career development, vocational support, and assistance to vulnerable populations.

## PUBLIC INFORMATION AND TRANSPARENCY



- 231. SUPPORT legislation that strengthens transparency and public access to government information, such as public records, open data initiatives, and government meeting broadcasts.
- 232. SUPPORT initiatives that address the spread of misinformation and disinformation, particularly on social media platforms, which can undermine public trust and safety.
- 233. SUPPORT legislative measures that promote media literacy in schools and communities to help the public better evaluate news sources and the credibility of information.

## TELECOMMUNICATIONS AND BROADBAND

- 234. SUPPORT preservation of local government ownership and control of the local public rights-of-way and ensure reasonable compensation for their use.

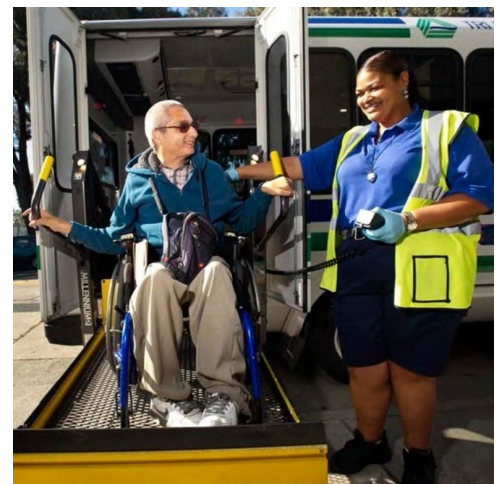
Adopted January 21, 2025

235. SUPPORT state initiatives and programs that expand broadband access, especially in underserved, rural, or low-income areas.
236. SUPPORT bridging the Digital Divide through legislative actions that reduce gaps in digital equity, access and literacy for marginalized communities.
237. SUPPORT state policies that support local efforts to adopt new technologies without compromising public health, privacy, or local autonomy.
238. SUPPORT Public, Educational and Government Access (PEG) channels to provide local community access and benefits and increase flexibility in the use of PEG funds.
239. ENSURE nondiscriminatory treatment of Public, Educational and Government Access Channels by Cable System Operators.
240. SUPPORT the expansion of broadband (high speed internet service) to drive economic development and job opportunities, support county service delivery, and improve health, education and public safety outcomes for residents.
241. SUPPORT expanded programs and outreach for programs, discounts, and subsidies that are available to eligible members of the community for internet service and computer equipment.
242. OPPOSE plans to eliminate access to landlines (Carrier of Last Resort) and other services that would affect the ability to access 911.



## TRANSPORTATION

243. EXPLORE options for strategic eligibility expansion of paved, non-motorized regional corridors for transportation related revenues, while limiting dilution of funding for maintenance activities.
244. SUPPORT changes to active transportation funding program statutes and policies that would accommodate maintenance activities.
245. EXPLORE options to reform state law limiting defendants' liability to their proportionate share of responsibility, in order to equitable distribute liability for a given harm and prevent a defendant determined to be only minimally liable to be forced to pay the entire judgement.
246. PROVIDE an integrated, multi-modal transportation system that equitably, safely and efficiently meets the transportation needs of all economic and social segments of the County and provides for the transport of goods and services throughout Contra Costa County.
247. EMPHASIZE the efficient use of the existing transportation system and cost-effective enhancements to this system. New and emerging policy direction includes an increase in the support for active transportation modes, support for the development of aging-friendly communities, and a decreasing emphasis on automotive capacity expanding projects which increase greenhouse gas production.



248. SUPPORT the provision of a safe, reliable, efficient, and accessible transportation system that balances social, environmental, and economic needs of the County through participation in planning and legislative initiatives (at the federal, state and local level) which emphasize transportation improvements for seniors and persons with disabilities reflective of an increase in demand and a legacy of underinvestment.
249. SUPPORT legislation that would have the State act on their 20-year legacy of identifying gaps in the accessible transportation system and then declining to implement identified solutions.
250. SUPPORT increased flexibility in the use of transportation funds.
251. SUPPORT increased regional coordination, while ensuring local input to enhance public transit (paratransit and fixed route), roads, trails, advanced mobility technology, and greenhouse gas reduction related projects.
252. ENSURE complete life-cycle costs, including an emphasis on environmentally friendly construction resources, are considered during state and local project development.
253. SUPPORT improvements in safety throughout the transportation system, specifically for vulnerable users of the system (such as children, pedestrians, cyclists, older persons, persons with disabilities, etc.).
254. PROMOTE the streamlining of transportation safety projects.
255. SUPPORT actions to put in place local planning coordination mechanisms and requirements for state funded or regulated facilities such as schools, roads, courts, jails, and OPPOSE efforts to compromise the County's road authority and the ability to protect public health, safety, and welfare.
256. SUPPORT regional, coordinated aviation transportation planning efforts to improve service delivery and to provide options to the surface transportation system for people and goods movement.
257. SUPPORT actions to increase waterborne transport of goods, in particular relative to the San Francisco to Stockton Ship Channel.
258. SUPPORT measures to enhance rail safety with an emphasis on; increased state oversight of railroad bridges, funding for first responder training, funding to improve rail safety and prevent rail trespass fatalities, improved regulations for tank car safety standards, impacts from sea-level rise, and data sharing requirements between state emergency managers, local responders, and rail operators.
259. OPPOSE linking transportation funding to housing production.
260. OPPOSE reducing or eliminating development impact fees (without secured backfill) in an effort to increase housing production.
261. INCREASE requirements for coordination between transportation agencies and utilities.



**262.** SUPPORT funding increases for active transportation projects and planning with an emphasis on facilities and investments that increase the likelihood of a mode shift away from automobiles, including double-tracking to create a separate bike lane to facilitate higher-speed bicyclists on multi-use trails such as the Iron Horse Corridor to provide last-mile access to transit, education, and employment.

**263.** PROVIDE resources to facilitate the deployment of electric vehicles and electric vehicle charging infrastructure, including funding for vehicles, chargers, and facility upgrades, and improvements to the electric distribution and transmission grids to safely accommodate increased load.

**264.** SUPPORT actions to increase and improve waterborne transportation of goods when it increases safety.



## VETERANS

**265.** SUPPORT legislation and budget actions that will continue the state's annual local assistance for County Veterans Service Offices at a minimum of \$11 million.

**266.** SUPPORT legislation and funding that will provide veterans organizations with resources to operate and make necessary repairs to, or replacement of, their meeting halls and facilities.

**267.** SUPPORT legislation that will improve the timeliness and quality of both VA benefits claim decisions and VA healthcare services.

**268.** SUPPORT legislation that will outlaw the charging of fees to file a veteran's compensation or pension claim.



## WASTE MANAGEMENT

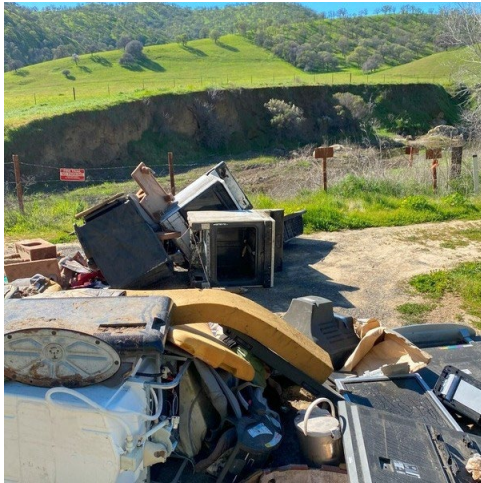
**269.** MAINTAIN the County's existing discretionary authority over matters pertaining to solid or hazardous waste management, recovery, and disposal. ENSURE new or expanded responsibilities are not imposed on the County, either directly or indirectly, without providing statutory authority to guarantee funding to implement actions necessary to adequately enforce or comply.

**270.** SUPPORT legislation to provide alternative management standards for the Treated Wood program at the Department of Toxic Substance Control so treated wood could be processed at Class II landfills and transfer stations with a composite line.

**271.** SUPPORT legislation that:

- ✓ Protects local decision-making authority regarding solid waste facility siting;
- ✓ Protects local solid waste franchising authority;
- ✓ Expands local solid waste and recycling fee-setting authority;

- ✓ Protects local governments' authority to direct the flow of waste; and
- ✓ Seeks to remedy lack of sufficient authority to address statutory responsibilities.



272. SUPPORT legislation promoting the diversion of recyclables and organics from landfills unless burdensome or impractical for local governments to implement.

273. SEEK more robust local regulatory and enforcement authority relative to the storage, transport, processing, recovery, and disposal of hazardous or solid waste.

274. SUPPORT statewide regulation for hauling solid waste and enforcing increased penalties for illegal dumping.

275. SUPPORT legislation that prioritizes, incentivizes, and innovates hazardous or solid waste reduction and reuse practices of the waste hierarchy over traditional recycling.

276. SUPPORT actions to improve and diversify markets for

recyclable materials and that encourages:

- ✓ Solutions to global policy reforms and development of local recycling markets;
- ✓ Creation of economic incentives for the use of recycled materials;
- ✓ Increased use of recycled content in products manufactured or sold in California; and
- ✓ Increased use of materials that are biodegradable and compostable.

277. OPPOSE legislation that requires diversion of materials for which there are not adequate markets.

278. ENSURE manufacturers are held accountable for proper end-of-life management of products and packing materials they produce to create effective producer-led reduction, reuse and recycling programs, foster more environmentally sustainable product/packaging design, and reduce the quantity of harmful pharmaceuticals (including veterinary medicine) that ultimately enter wastewater treatment facilities, bodies of water, and landfills.

279. SUPPORT actions that will shift end-of-life management of products from individuals to producers and sellers.

280. SUPPORT statewide regulation and enforcement to limit production or sale of items that negatively impact the environment or human health.

281. SUPPORT legislation that protects human health and the environment from exposure to hazardous materials and hazardous wastes such as per- and polyfluoroalkyl substances (PFAS).

282. OPPOSE actions that require counties to site, fund, approve, build and/or operate organic processing facilities, including composting operations.

283. SUPPORT actions to protect and expand waste diversion credits or disposal reduction credits.

284. SUPPORT the development of conversion technologies as an alternative to land filling and provide state funding to local jurisdictions for such projects; and provide that all energy produced by such projects be designated as renewable energy.

285. SUPPORT new or additional funding for expanded recycling and organics processing infrastructure.

286. SUPPORT funding for CalRecycle to assist in the implementation of laws focused on diverting organic and recyclable waste from landfill.

- 287. SUPPORT state investment in expanded clean composting, anaerobic digestion and recyclable materials manufacturing.
- 288. SUPPORT legislation to enable additional food rescue and recovery of edible food, including expansion of Good Samaritan laws, and support legislation that establishes funding for food recovery programs and develops policies for safe but consistent food date labeling.
- 289. SUPPORT legislation that provides for less burdensome recovery of Household Hazardous Waste.

## WORKFORCE DEVELOPMENT

- 290. SUPPORT increasing the flexibility of Workforce Development Board to partner with community agencies and other county bureaus to increase supportive services and respond to local workforce needs.
- 291. SUPPORT establishing a higher minimum wage.
- 292. SUPPORT paid and job-protected leave policies.
- 293. SUPPORT paid apprenticeship programs.
- 294. SUPPORT increased teacher training and education, including funding to support employees to obtain a teaching credential or childcare permit.
- 295. SUPPORT policies and programs that increase economic opportunity for women and improve gender equity.
- 296. SUPPORT actions that promote training, capacity building and deeper understanding for students, educators and county staff on trauma informed care, interpersonal violence, adverse childhood experiences, and healthy workplaces and schools.
- 297. SUPPORT expansion of education and educational materials in multiple languages related to labor rights, wage theft, proper compensation, and other work-related issues for all workers.
- 298. SUPPORT training for workers in all fields covered by County employees.