

Interdepartmental Climate Action Task Force Report



Presentation to the Board of Supervisors
September 16, 2025

Warren Lai, Department of Public Works Director
John Kopchik, Department of Conservation and Development Director
Jody London, Sustainability Coordinator, DCD
Brendan Havenar-Daughton, Energy Manager, Public Works

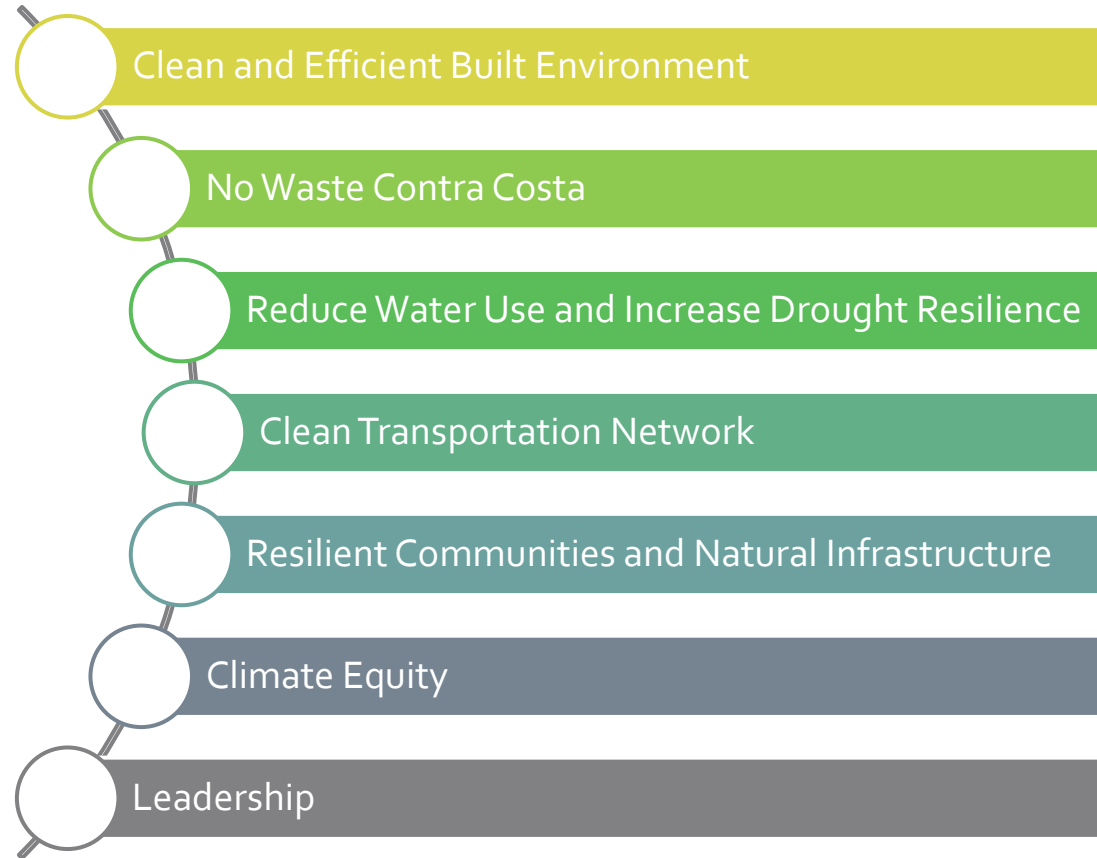
History

- **Interdepartmental Climate Action Task Force** was directed by the Board in September 2020 Climate Emergency Resolution.
 - Focuses on actions County departments can take to urgently implement the County's Climate Action and Adaptation Plan (CAAP).
 - Consists of department heads or designees.
- Recommended creation of **Sustainability Fund** to support projects in County facilities.
- Supports the **G3 Champions** (Green Government Group) volunteers across County departments who come together every other month to learn and develop strategies to help departments operate more sustainably.



Implementing the Climate Action and Adaptation Plan

2024 CAAP Goals



Breadth of actions in the CAAP necessitates close collaboration across County departments.

Transitioning Daycares to All-Electric

CAAP Strategy BE-2: Retrofit existing buildings and facilities in the unincorporated county, and County infrastructure, to reduce energy use and convert to low-carbon or carbon-free fuels.

- \$220,859 grant from U.S. Dept. of Energy Energy Efficiency and Conservation Block Grant
- Clean energy retrofits focused on energy efficiency for licensed, family-based daycare facilities (single-family homes) in impacted communities
- No cost for program participants with direct install model
- Working with CoCoKids to identify daycare facilities
- RFP for contractor to do the upgrades will be released soon
- Grant work completed September 2027



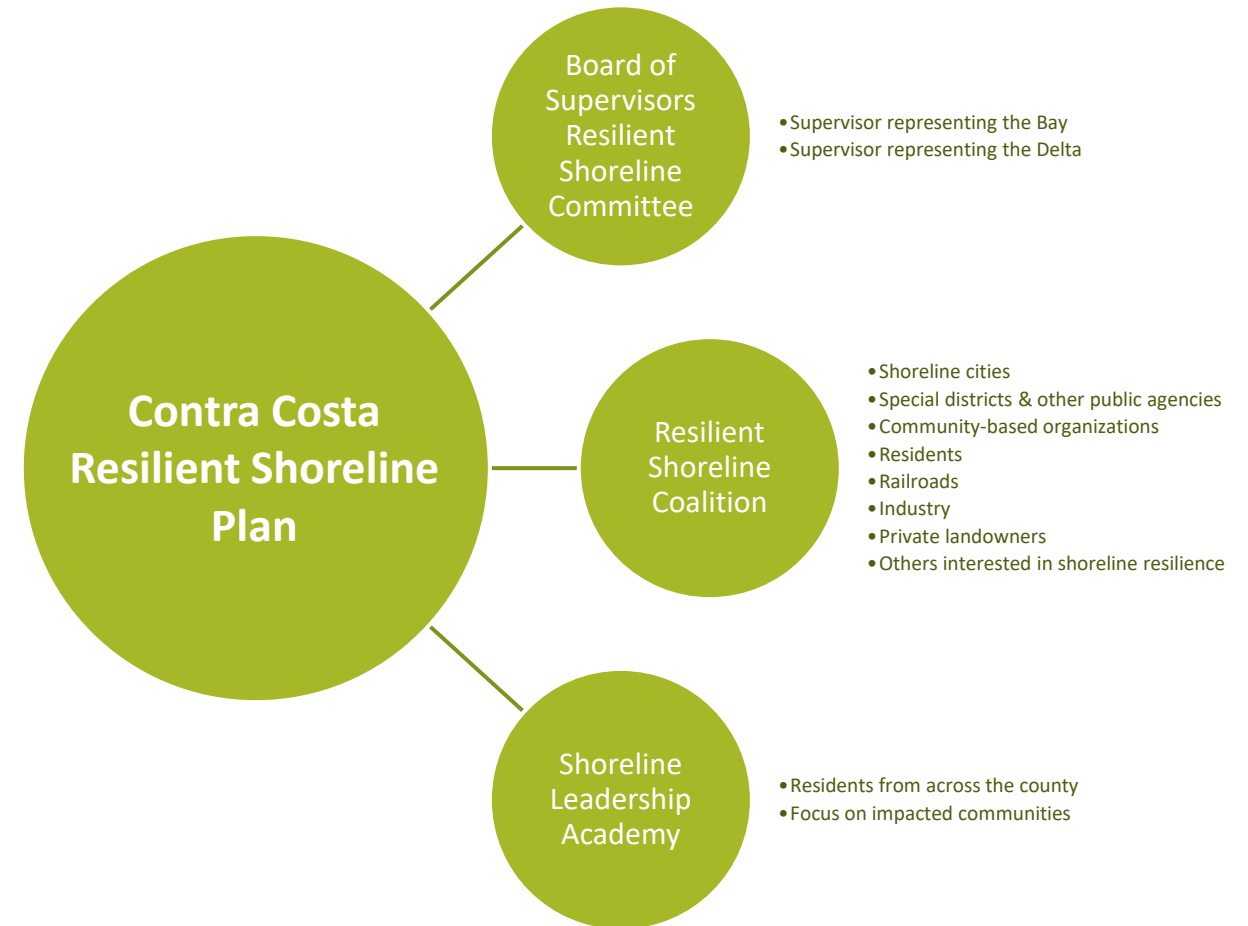
Photo Credit: Google Creative Commons

Contra Costa Resilient Shoreline Plan

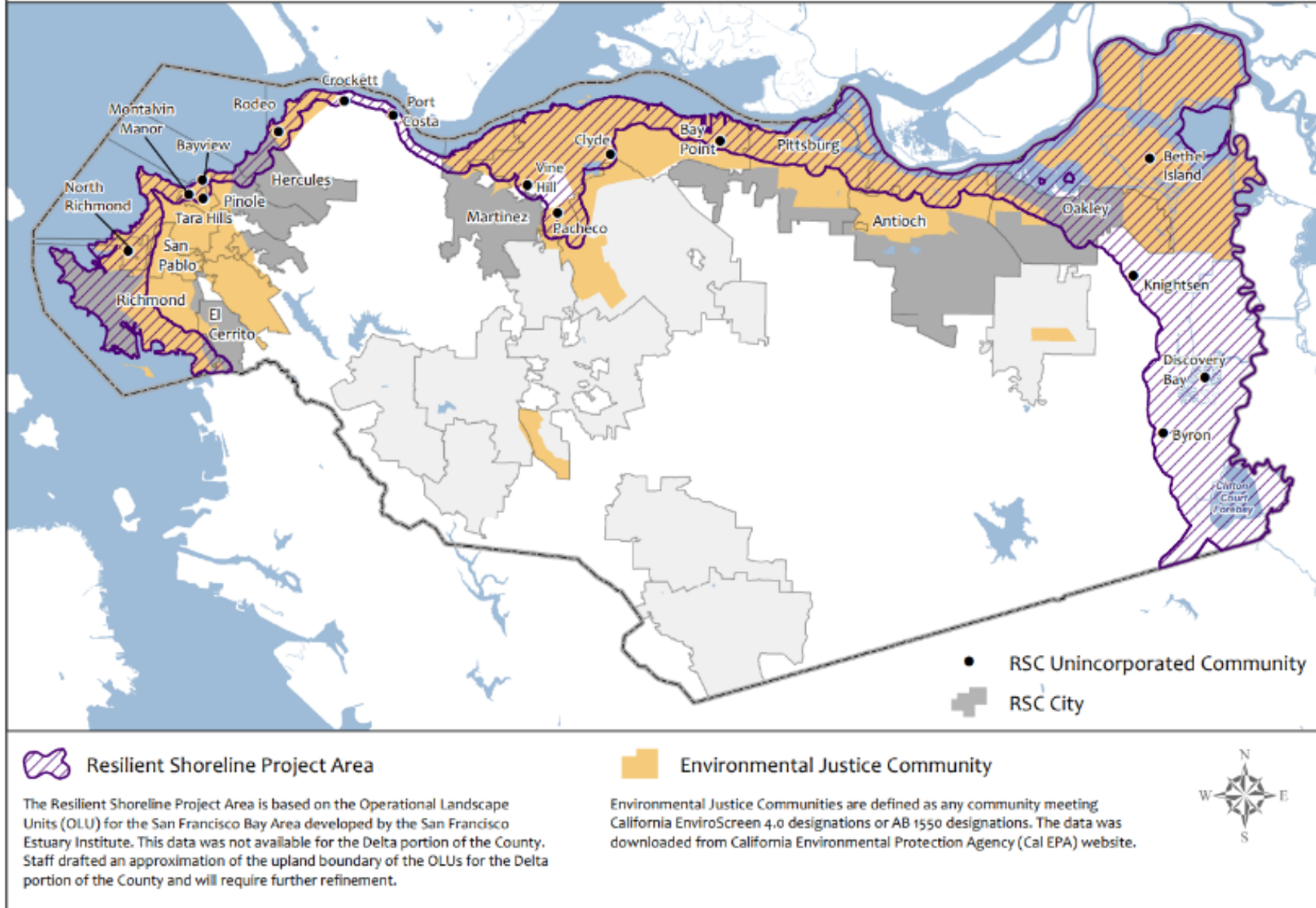
CAAP Strategy NI-1: Protect against and adapt to changes in sea levels and other shoreline flooding conditions.

- County Awarded \$1,499,285 through Ocean Protection Council SB 1 Grant Program
 - Plan covers 90-mile shoreline from Bay to Delta
 - Focus on impacted communities
 - Explores natural and constructed infrastructure
- Grant work will include:
 - Participatory community engagement campaign
 - Strategic vulnerability assessment update to identify areas and assets potentially most affected by rising water
 - Plan development, including adaptation pathways, implementation actions, partnership needs, and financing strategies
- Interdepartmental collaboration is key to ensure County can continue to provide services and facilities are resilient to sea level rise.

September 2025



Contra Costa Resilient Shoreline Coalition (RSC) Resilient Shoreline Project Area and Environmental Justice Communities



Resilience Hubs

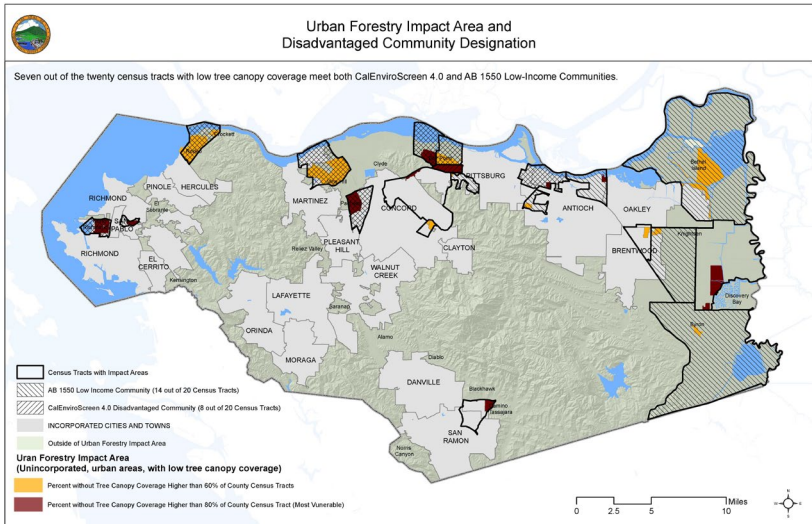
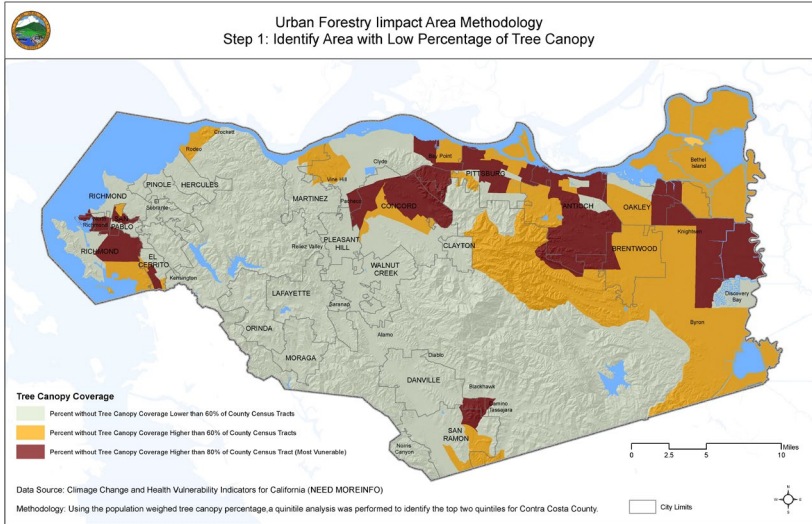
(places where people can go when there is a disaster and they cannot be in their homes)

CAAP Strategy NI-3: Establish and maintain community resilience hubs.

- DCD and Office of Emergency Services staff have begun coordination to develop a resilience hub master plan.
- Potential resilience hub facilities are being explored through Public Works, the Library, and Office of Racial Equity and Social Justice, as well as community partners and cities.
- In the meantime, staff is looking for opportunities to pilot resilience hubs.
 - Staff is working with Ambrose Recreation and Park District in Bay Point to identify what is needed for the Ambrose Community Center to serve as a resilience hub through a \$25,000 PG&E grant.



- East County Service Center in Brentwood is being designed as a microgrid that will provide direct resiliency benefits to community members.



Urban Forest Management Plan

CAAP Strategy NI-4: Sequester carbon on natural and working lands in Contra Costa County.

- \$750,000 grant from Governor's Office of Land Use and Climate Innovation
- Project will include:
 - Community engagement led by The Watershed Project and Sustainable Contra Costa
 - Tree stewardship academy
 - Tree inventory
 - Green infrastructure workforce development led by Workforce Development Board and Civicorps
 - Urban Forest Management Plan developed by technical consultant
- Advisory Group will include DCD, Public Works, and Contra Costa County Fire Protection District, as well as community members, community groups, and other interested County departments.

Employee Commute Survey

- Results will help design and promote programs that make it easier for employees to reduce pollution associated with driving
- Survey was available throughout August
- 2,341 responses, from nearly all departments! (over 20%)
- Raffle for prizes
 - Sticker pack
 - \$20 Amazon gift card (courtesy of 511 Contra Costa)
- Results will be shared in next update



Sustainability Fund

County Sustainability Fund

Funding managed by Public Works

Annual allocation of \$2.5M

Established to fund priority sustainable infrastructure projects

Short term priorities include EV chargers & building energy efficiency upgrades at County facilities *(these are priorities that maximize financial and environmental benefits)*

County-Owned EV Chargers... by the Numbers

Level 2 “overnight chargers” = 8-12 hrs for a full charge

- **161** # of chargers in operation
- **46** # of chargers under construction
- **158** # of chargers planned and funded

@ **18**
Facilities

Level 3 “fast chargers” = 30-45 mins for a full charge

- **0** # of chargers in operation
- **2** # of chargers under construction
- **20** # of chargers planned and funded

@ **15**
Facilities

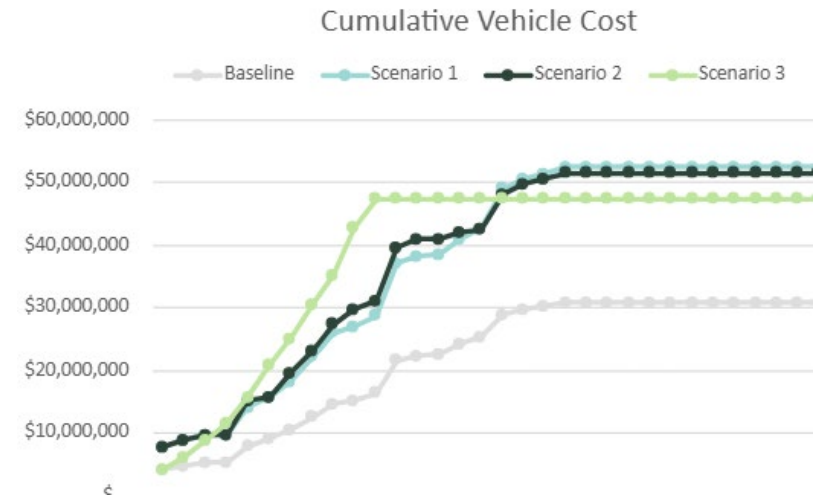
Electric Vehicle Replacement

- **82** # of EVs in Fleet
- **6** % of fleet vehicles that has been electrified

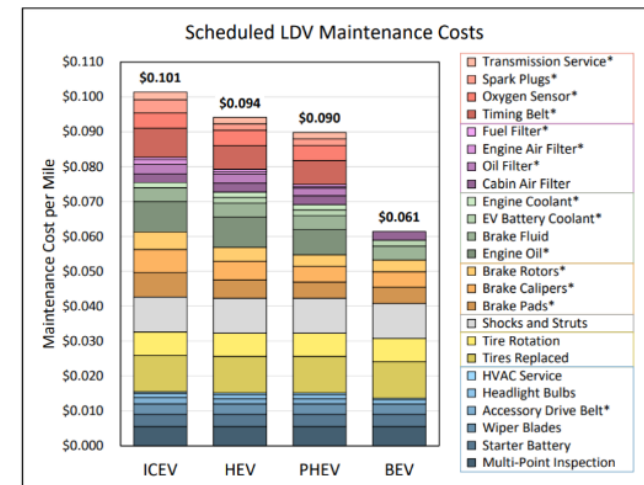
For **9**
Departments

Zero Emission Vehicle Transition Plan

- Organizes and baselines fleet data (1500 assets)
- Compares three scenarios reflecting degrees of ZEV investments
- Charts a course towards a Zero Emission fleet by 2035
- Provides cost estimates for fleet transition (Total Cost of Ownership model)
- Outlines infrastructure needs to support ZEVs
- Supports detailed analysis at the departmental level (individual vehicle replacement curves)



EV = 40% Reduction in Maintenance Costs



Whole building lighting retrofits

- Priority projects – **conversion to LED**
 - Inefficient linear fluorescents fixtures
 - High wattage exterior fixtures



- Funding available for multiple projects in 2026
- Contact Public Works to communicate need/interest

Thank you!
