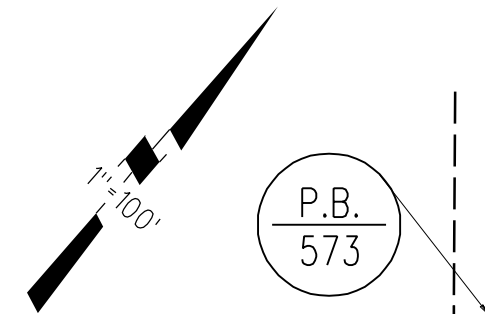


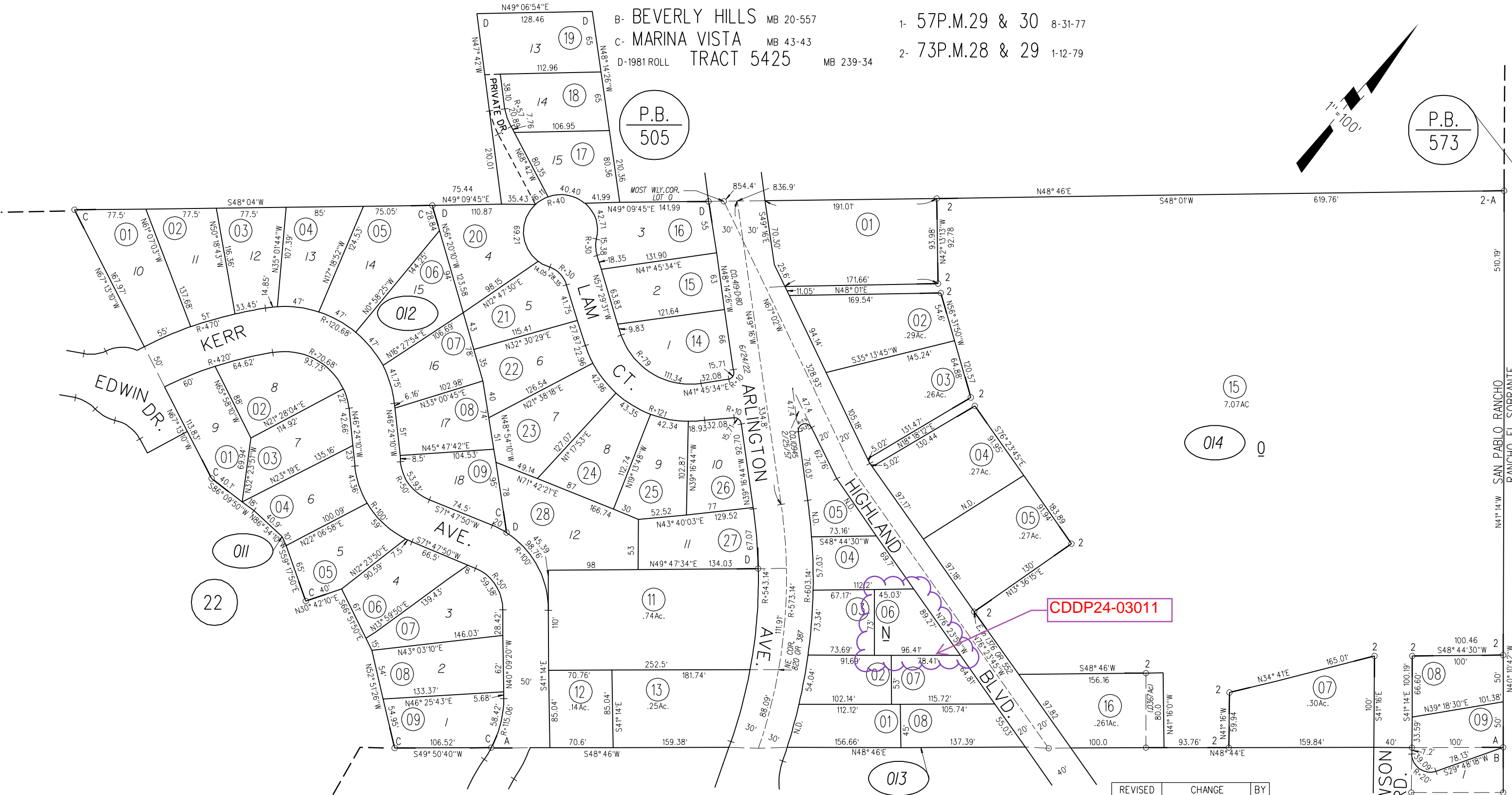
B- BEVERLY HILLS MB 20-557  
C- MARINA VISTA MB 43-43  
D- 1981 ROLL TRACT 5425 MB 239-34

1- 57P.M.29 & 30 8-31-77  
2- 73P.M.28 & 29 1-12-79



P.B.  
505

P.B.  
573

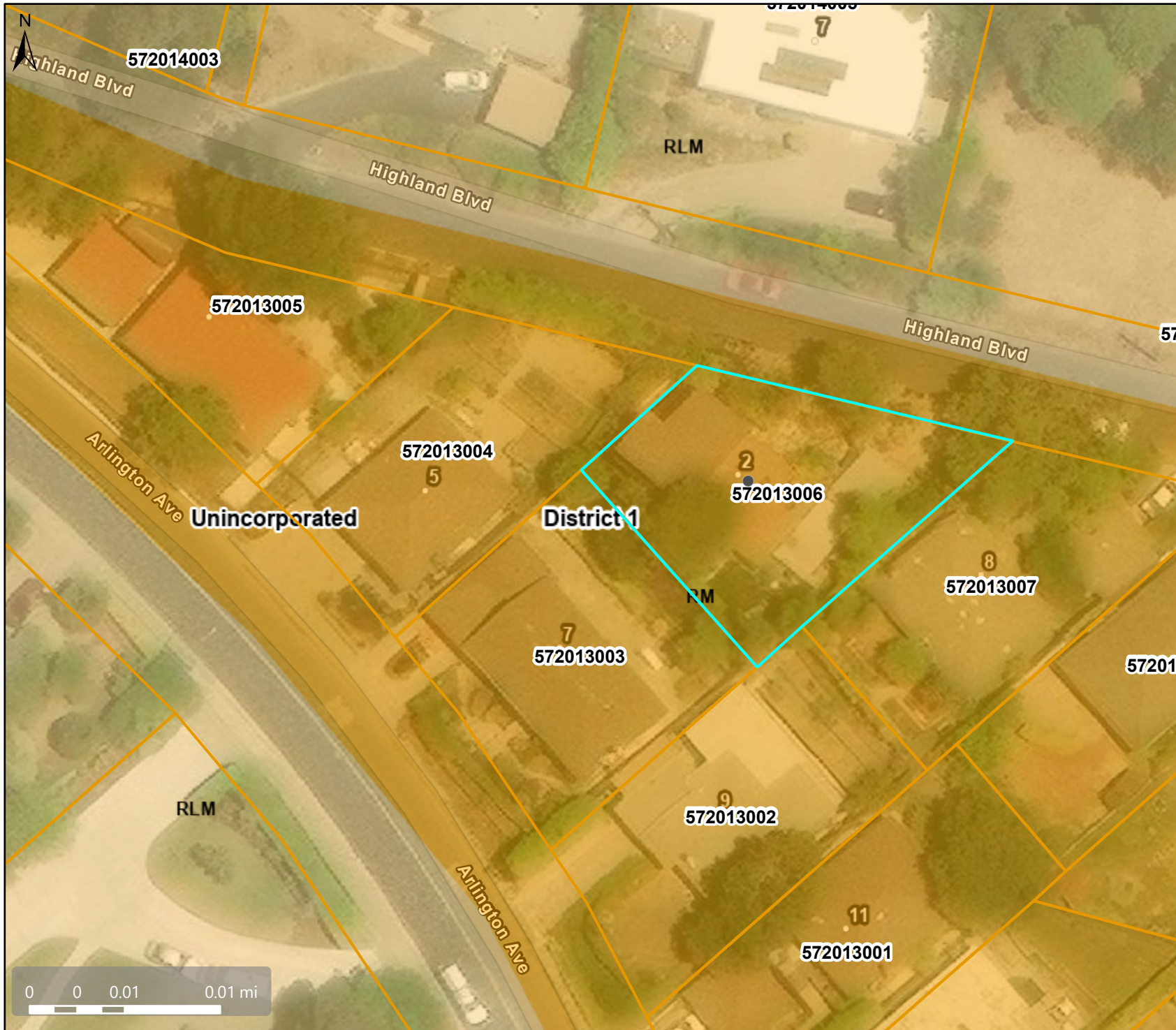


CDDP24-03011

REVISED	CHANGE	BY
09-21-93	SPLIT PCLS 15,16	MJ

2  
011 012 013 014

# General Plan: RM, Residential Medium Density



## Map Legend

- Assessment Parcels
- Planning Layers (DCD)**
- General Plan**
- RLM (Residential Low-Medium Density) (3-7 du/na)
- RM (Residential Medium Density) (7-17 du/na)
- Unincorporated
- Board of Supervisors' Districts
- Base Data**
- Address Points

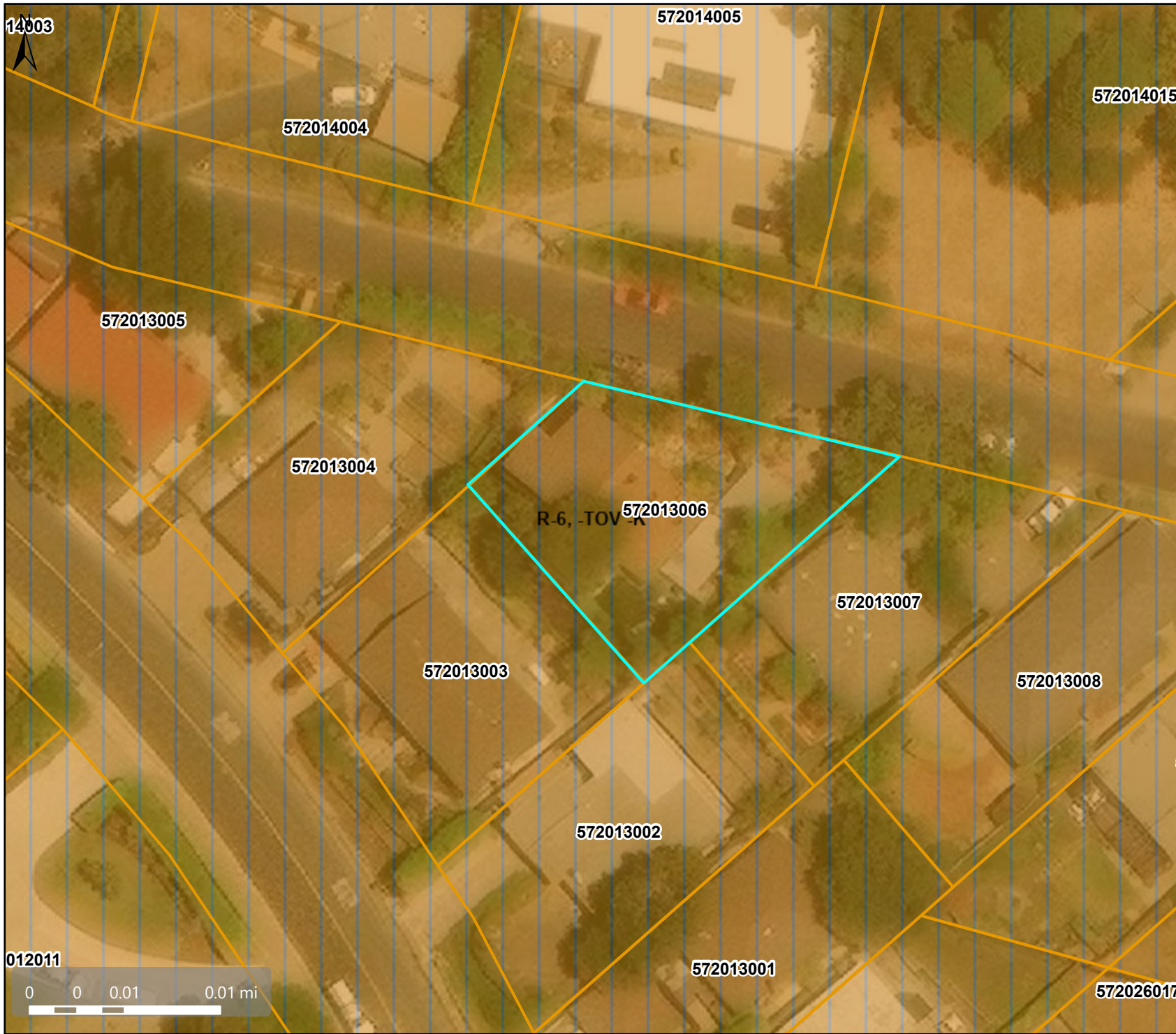
This map is a user generated, static output from an internet mapping application and is intended for reference use only. Data layers that appear on this map may or may not be accurate, current, or otherwise reliable.

**THIS MAP IS NOT TO BE USED FOR NAVIGATION.**



CCMap is maintained by Contra Costa County Department of Information Technology, County GIS. Data layers contained within the CCMap application are provided by various Contra Costa County Departments. Please direct all data inquiries to the appropriate department.

**Spatial Reference**  
 PCS: WGS 1984 Web Mercator Auxiliary Sphere  
 Datum: WGS 1984





### Map Legend

-  Assessment Parcels
- Planning Layers (DCD)
- Zoning
- ZONE\_OVER
  -  R-6 -TOV -K (Tree Obstruction and Kensington)





This map is a user generated, static output from an internet mapping application and is intended for reference use only. Data layers that appear on this map may or may not be accurate, current, or otherwise reliable.  
 THIS MAP IS NOT TO BE USED FOR NAVIGATION.  
 CCMAP is maintained by Contra Costa County Department of Information Technology, County GIS. Data layers contained within the CCMAP application are provided by various Contra Costa County Departments. Please direct all data inquires to the appropriate department.

Spatial Reference  
 PCS: WGS 1984 Web Mercator Auxiliary Sphere  
 Datum: WGS 1984





### Map Legend

-  Assessment
-  Parcels



This map is a user generated, static output from an internet mapping application and is intended for reference use only. Data layers that appear on this map may or may not be accurate, current, or otherwise reliable.

THIS MAP IS NOT TO BE USED FOR NAVIGATION. CCMMap is maintained by Contra Costa County Department of Information Technology, County GIS. Data layers contained within the CCMMap application are provided by various Contra Costa County Departments. Please direct all data inquiries to the appropriate department.

Spatial Reference  
 PCS: WGS 1984 Web Mercator Auxiliary Sphere  
 Datum: WGS 1984