

A- SERPA TRACT MB 32-23

P.B.
416

(ROAD NO. 20)

CO.CO.CO 29/73-41
EL PORTAL

FREEWAY

SAN

MIFLIN

105.

PABLO

MIFLIN

AVENUE

STREET

CARLFIELD

CAMINO PABLO

04

NOTE: THIS MAP WAS PREPARED FOR ASSESSMENT PURPOSES ONLY. NO LIABILITY IS ASSUMED FOR THE ACCURACY OF THE INFORMATION DELINEATED HEREON. ASSESSOR'S PARCELS MAY NOT COMPLY WITH LOCAL LOT SPLIT OR BUILDING SITE ORDINANCES.

CDDP20-03031 Project Site

11/12/04			
031	36	033	
032		034	

2/7
ASSESSOR'S MAP
BOOK 420 PAGE 03
CONTRA COSTA COUNTY,CALIF.

General Plan: Residential Medium-High



Map Legend

Assessment
Parcels

Planning

General Plan

RM (Residential
Medium
Density) (7-17
du/na)

RMH
(Residential
Medium-High
Density) (17-30
du/na)

PS (Public and
Semi-Public)

RC (Resource
Conservation)

Unincorporated

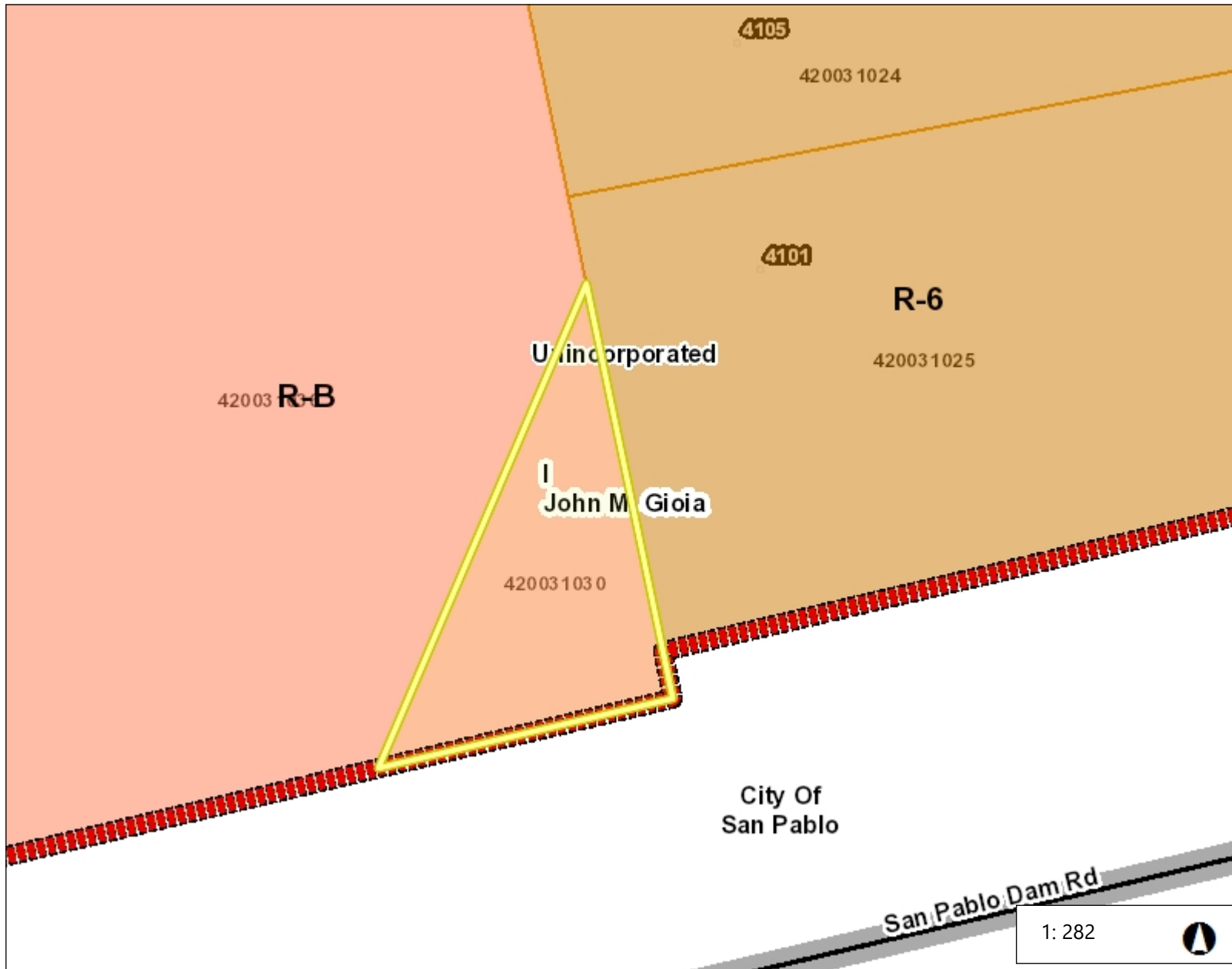
City Limits

This map is a user generated, static output from an internet mapping application and is intended for reference use only. Data layers that appear on this map may or may not be accurate, current, or otherwise reliable.

THIS MAP IS NOT TO BE USED FOR NAVIGATION. CCMAP is maintained by Contra Costa County Department of Information Technology, County GIS. Data layers contained within the CCMAP application are provided by various Contra Costa County Departments. Please direct all data inquiries to the appropriate department.

Spatial Reference
PCS: WGS 1984 Web Mercator Auxiliary Sphere
Datum: WGS 1984

Zoning: R-B, Retail Business



Legend

- Board of Supervisors' Districts
- City Limits
- Unincorporated
- Zoning
 - R-6 (Single Family Residential)
 - R-6, -FH -UE (Single Family Resid Urban Farm Animal Exclusion Com
 - R-6 -SD-1 (Single Family Resident Hillside Development Combining Di
 - R-6 -TOV -K (Single Family Reside View Ordinance and Kensington Cc
 - R-6, -UE (Single Family Residential Exclusion Combining District)
 - R-6 -X (Single Family Residential - Combining District)
 - R-7 (Single Family Residential)
 - R-7 -X (Single Family Residential - Combining District)
 - R-10 (Single Family Residential)
 - R-10, -UE (Single Family Resident: Exclusion Combining District)
 - R-12 (Single Family Residential)
 - R-15 (Single Family Residential)
 - R-20 (Single Family Residential)
 - R-20, -UE (Single Family Resident: Exclusion Combining District)
 - R-40 (Single Family Residential)
 - R-40, -FH -UE (Single Family Resic Urban Farm Animal Exclusion Com
 - R-40, -UE (Single Family Resident: Exclusion Combining District)
 - R-65 (Single Family Residential)

Notes

Contra Costa County -DOIT GIS

0.0 0 0.00 0.0 Miles

WGS_1984_Web_Mercator_Auxiliary_Sphere

This map is a user generated static output from an Internet mapping site and is for reference only. Data layers that appear on this map may or may not be accurate, current, or otherwise reliable.

THIS MAP IS NOT TO BE USED FOR NAVIGATION

1: 282



Aerial View



Legend

- Board of Supervisors' Districts
- City Limits
- Unincorporated
- Address Points
- Streets
- Assessment Parcels
- World Imagery
- Low Resolution 15m Imagery
- High Resolution 60cm Imagery
- High Resolution 30cm Imagery
- Citations



1: 282



0.0 0 0.00 0.0 Miles

WGS_1984_Web_Mercator_Auxiliary_Sphere

This map is a user generated static output from an Internet mapping site and is for reference only. Data layers that appear on this map may or may not be accurate, current, or otherwise reliable.

THIS MAP IS NOT TO BE USED FOR NAVIGATION

Notes

Contra Costa County -DOIT GIS