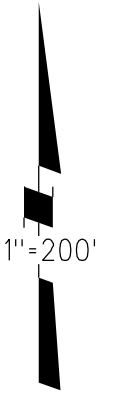


1980 ROLL TRACT 5435 MB 222-37



PROJECT SITE

5

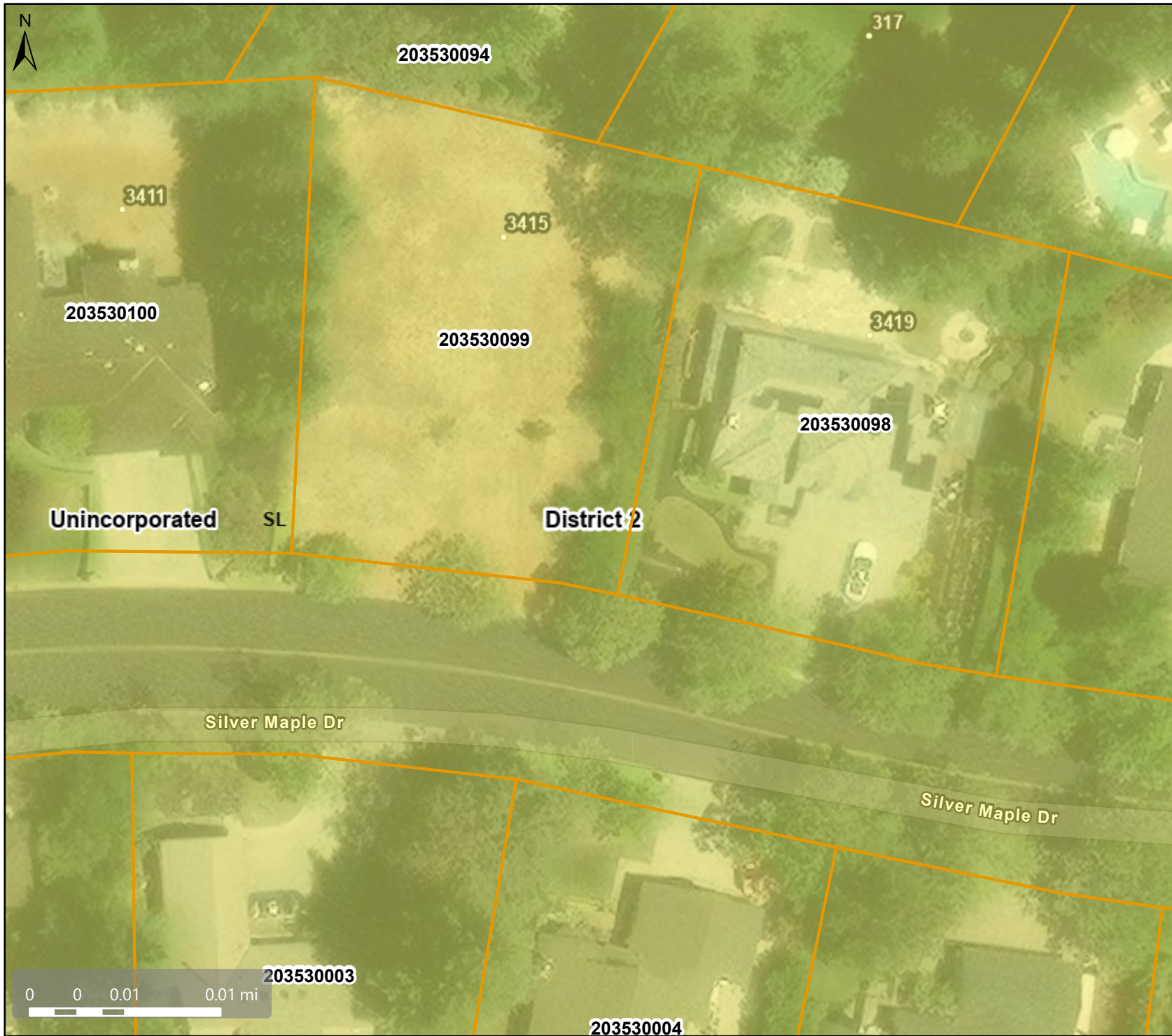
16

54


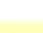



06

05

530



Map Legend

-  Assessment Parcels
- Planning Layers (DCD)**
- General Plan**
-  SL (Single Family Residential - Low) 1.0 - 2.9 Units per Net Acre
-  Unincorporated
-  Board of Supervisors' Districts
- Base Data**
-  Address Points

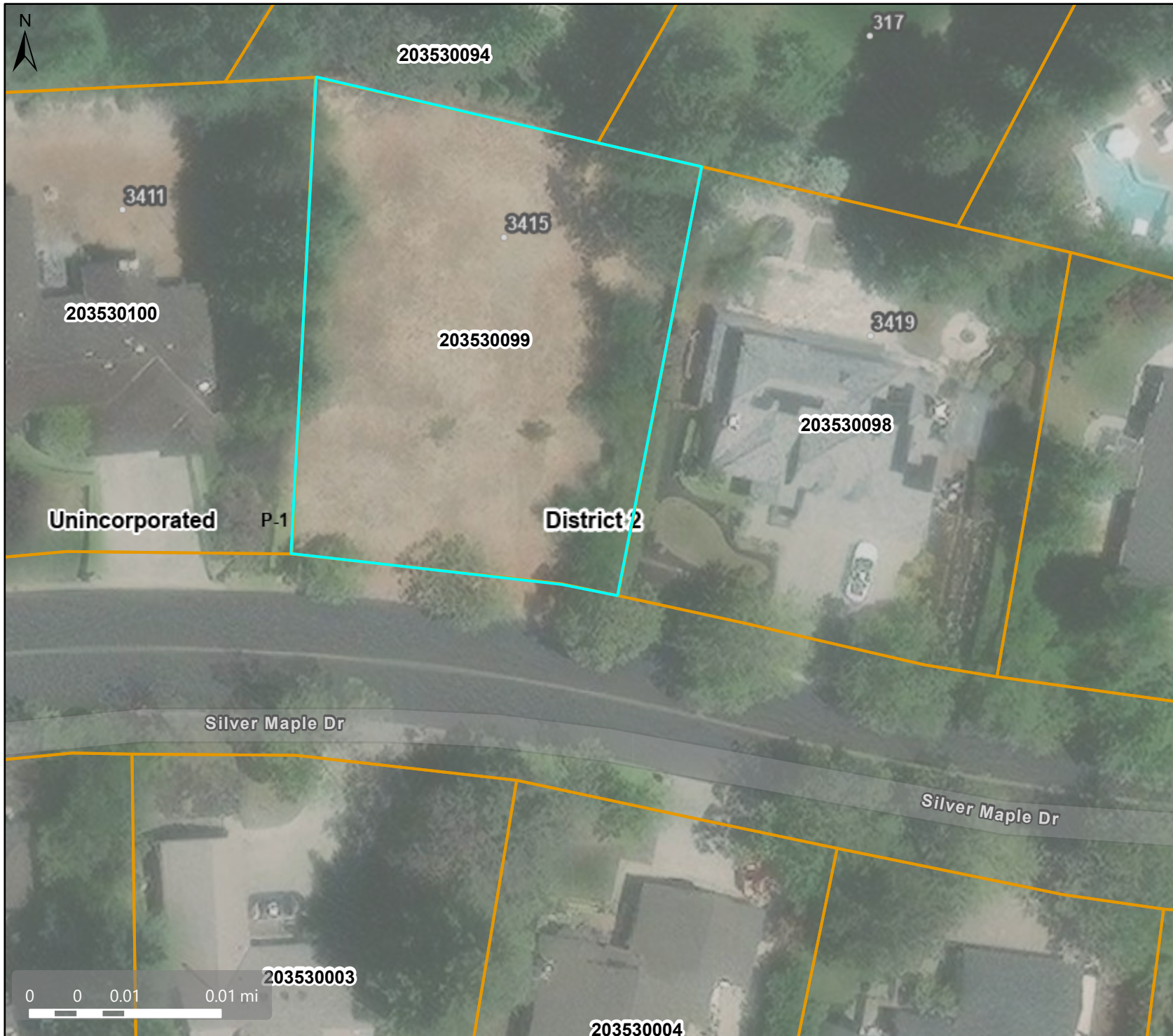


This map is a user generated, static output from an internet mapping application and is intended for reference use only. Data layers that appear on this map may or may not be accurate, current, or otherwise reliable.






THIS MAP IS NOT TO BE USED FOR NAVIGATION.

CCMap is maintained by Contra Costa County Department of Information Technology, County GIS. Data layers contained within the CCMap application are provided by various Contra Costa County Departments. Please direct all data inquiries to the appropriate department.

Spatial Reference
 PCS: WGS 1984 Web Mercator Auxiliary Sphere
 Datum: WGS 1984



Map Legend

-  Assessment Parcels
- Planning Layers (DCD)**
- Zoning**
- ZONE_OVER**
-  P-1 (Planned Unit)
-  Unincorporated
-  Board of Supervisors' Districts
- Base Data**
-  Address Points



This map is a user generated, static output from an internet mapping application and is intended for reference use only. Data layers that appear on this map may or may not be accurate, current, or otherwise reliable.

THIS MAP IS NOT TO BE USED FOR NAVIGATION.

CCMap is maintained by Contra Costa County Department of Information Technology, County GIS. Data layers contained within the CCMap application are provided by various Contra Costa County Departments. Please direct all data inquiries to the appropriate department.

Spatial Reference
 PCS: WGS 1984 Web Mercator Auxiliary Sphere
 Datum: WGS 1984







203530003

203530004



Map Legend

-  Assessment Parcels
- Planning Layers (DCD)**
-  Unincorporated
-  Board of Supervisors' Districts
- Base Data**
-  Address Points



This map is a user generated, static output from an internet mapping application and is intended for reference use only. Data layers that appear on this map may or may not be accurate, current, or otherwise reliable.

THIS MAP IS NOT TO BE USED FOR NAVIGATION.

CCMap is maintained by Contra Costa County Department of Information Technology, County GIS. Data layers contained within the CCMap application are provided by various Contra Costa County Departments. Please direct all data inquiries to the appropriate department.

Spatial Reference
 PCS: WGS 1984 Web Mercator Auxiliary Sphere
 Datum: WGS 1984