

POR SEC 2 T2S R1E MDBM  
SEC 35 T1S R1E MDBM

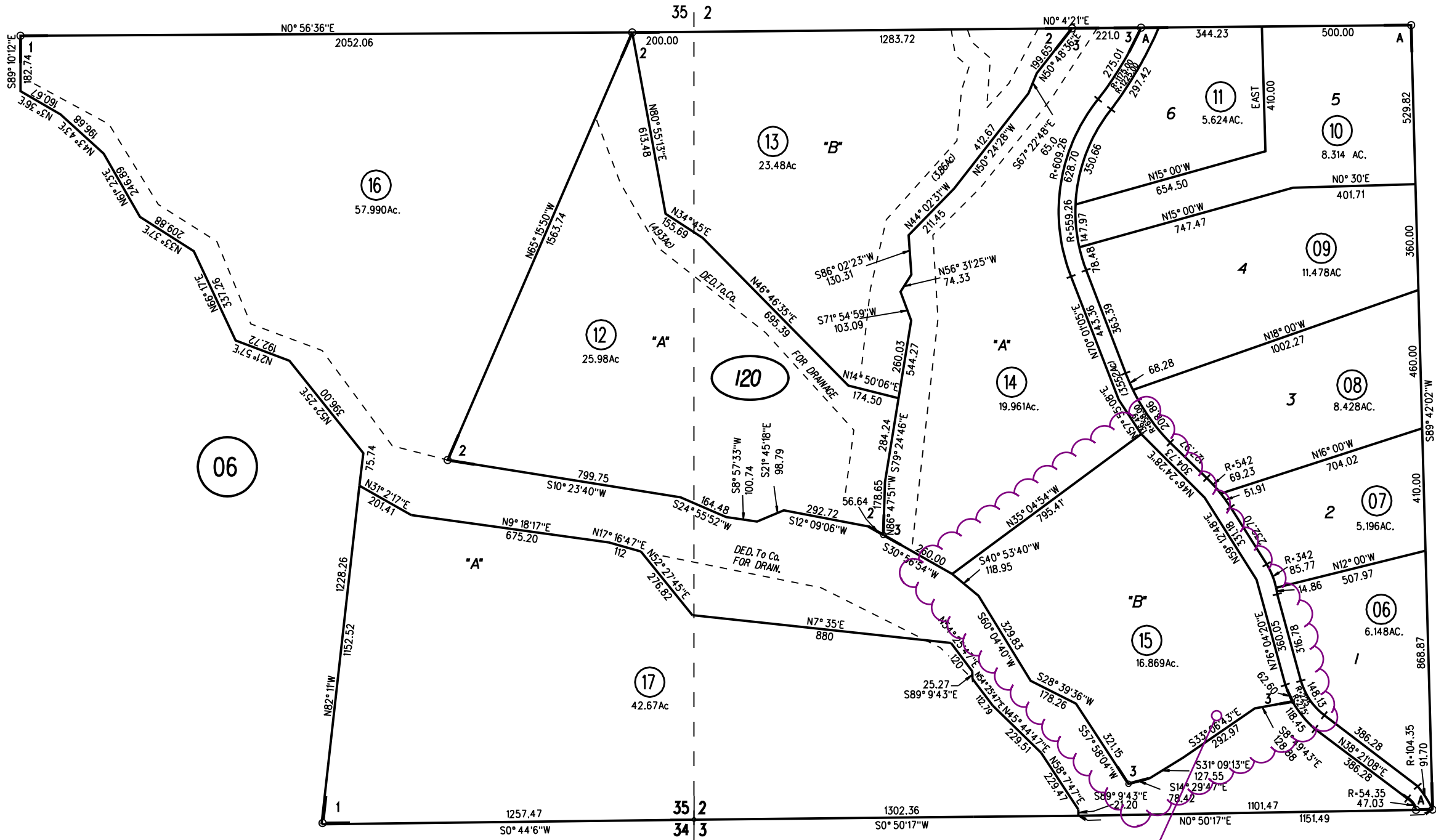
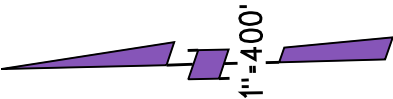
1- 74PM29 2-23-79

1982 A- TRACT 5638 MB 262-23

2- 115PM7 3-19-85

3- 134PM50 8-12-88

06



P.B.  
205

120

17  
6/21/05

NOTE: THIS MAP WAS PREPARED FOR ASSESSMENT PURPOSES ONLY. NO LIABILITY IS ASSUMED FOR THE ACCURACY OF THE INFORMATION DELINEATED HEREON. ASSESSOR'S PARCELS MAY NOT COMPLY WITH LOCAL LOT SPLIT OR BUILDING SITE ORDINANCES.





- Legend
- Board of Supervisors' Districts
  - City Limits
  - Unincorporated
  - Streets
  - Building Footprints
  - Assessment Parcels
  - World Imagery
  - Low Resolution 15m Imagery
  - High Resolution 60cm Imagery
  - High Resolution 30cm Imagery
  - Citations



0.1 0 0.04 0.1 Miles  
WGS\_1984\_Web\_Mercator\_Auxiliary\_Sphere

This map is a user generated static output from an Internet mapping site and is for reference only. Data layers that appear on this map may or may not be accurate, current, or otherwise reliable.  
THIS MAP IS NOT TO BE USED FOR NAVIGATION

1: 2,489



Notes  
Contra Costa County -DOIT GIS





Legend

- Board of Supervisors' Districts
- City Limits
- Unincorporated
- General Plan
- SV (Single Family Residential - Ver
- SL (Single Family Residential - Low
- SM (Single Family Residential - Me
- SH (Single Family Residential - Hig
- ML (Multiple Family Residential - Lc
- MM (Multiple Family Residential - M
- MH (Multiple Family Residential - H
- MV (Multiple Family Residential - V
- MS (Multiple Family Residential - V
- CC (Congregate Care/Senior Housi
- MO (Mobile Home)
- M-1 (Parker Avenue Mixed Use)
- M-2 (Downtown/Waterfront Rodeo I
- M-3 (Pleasant Hill BART Mixed Use
- M-4 (Willow Pass Road Mixed Use)
- M-5 (Willow Pass Road Commercia
- M-6 (Bay Point Residential Mixed U
- M-7 (Pittsburg/Bay Point BART Sta
- M-8 (Dougherty Valley Village Cent
- M-9 (Montalvin Manor Mixed Use)
- M-10 (Willow Pass Business Park M
- M-11 (Appian Way Mixed Use)
- M-12 (Triangle Area Mixed Use)
- M-13 (San Pablo Dam Road Mixed
- M-14 (Heritage Mixed Use)
- CO (Commercial)
- OF (Office)
- BP (Business Park)
- LI (Light Industry)
- HI (Heavy Industry)
- AL, OIBA (Agricultural Lands & Off
- CR (Commercial Recreation)
- ACO (Airport Commercial)
- LF (Landfill)
- PS (Public/Semi-Public)

1: 2,257



Notes

Contra Costa County -DOIT GIS



0.1 0 0.04 0.1 Miles

WGS\_1984\_Web\_Mercator\_Auxiliary\_Sphere

This map is a user generated static output from an Internet mapping site and is for reference only. Data layers that appear on this map may or may not be accurate, current, or otherwise reliable.

THIS MAP IS NOT TO BE USED FOR NAVIGATION





- Legend
- Board of Supervisors' Districts
  - City Limits
  - Unincorporated
  - Zoning
    - R-6 (Single Family Residential)
    - R-6, -FH -UE (Flood Hazard and A
    - R-6 -SD-1 (Slope Density Hillside T
    - R-6 -TOV -K (Tree Obstruction anc
    - R-6, -UE (Urban Farm Animal Excl
    - R-6 -X (Railroad Corridor Combinir
    - R-7 (Single Family Residential)
    - R-7 -X (Railroad Corridor Combinir
    - R-10 (Single Family Residential)
    - R-10, -UE (Urban Farm Animal Exc
    - R-12 (Single Family Residential)
    - R-15 (Single Family Residential)
    - R-20 (Single Family Residential)
    - R-20, -UE (Urban Farm Animal Exc
    - R-40 (Single Family Residential)
    - R-40, -FH -UE (Flood Hazard and A
    - R-40, -UE (Urban Farm Animal Exc
    - R-65 (Single Family Residential)
    - R-100 (Single Family Residential)
    - D-1 (Two Family Residential)
    - D-1 -T (Transitional Combining Dist
    - D-1, -UE (Urban Farm Animal Excl
    - M-12 (Multiple Family Residential)
    - M-12 -FH (Flood Hazard Combining
    - M-17 (Multiple Family Residential)
    - M-29 (Multiple Family Residential)
    - F-R (Forestry Recreational)
    - F-R -FH (Flood Hazard Combining I
    - F-1 (Water Recreational)
    - F-1 -FH (Flood Hazard Combining I
    - A-2 (General Agriculture)
    - A-2, -BS (Boat Storage Combining I
    - A-2, -BS -SG (Boat Storage and So
    - A-2 -FH (Flood Hazard Combining I
    - A-2, -FH -SG (Flood Hazard and Sc

1: 2,257



This map is a user generated static output from an Internet mapping site and is for reference only. Data layers that appear on this map may or may not be accurate, current, or otherwise reliable.  
**THIS MAP IS NOT TO BE USED FOR NAVIGATION**

**Notes**  
Contra Costa County -DOIT GIS