

CONTRA COSTA  
**HEALTH**



[cchealth.org](http://cchealth.org)

# Community Advisory Board

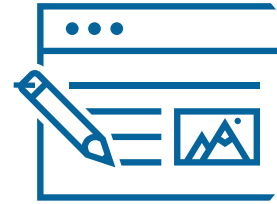
**CORE Outreach  
Re-entry Team**

**Shelby Ferguson, MSW  
CORE Program Director**

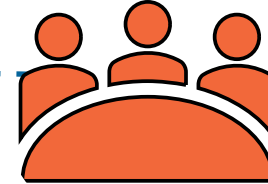
**Lisa Thomas  
CORE Program Coordinator**

April 2026

# CORE Re-Entry Team



Direct communication and receives referrals from Probation Officers



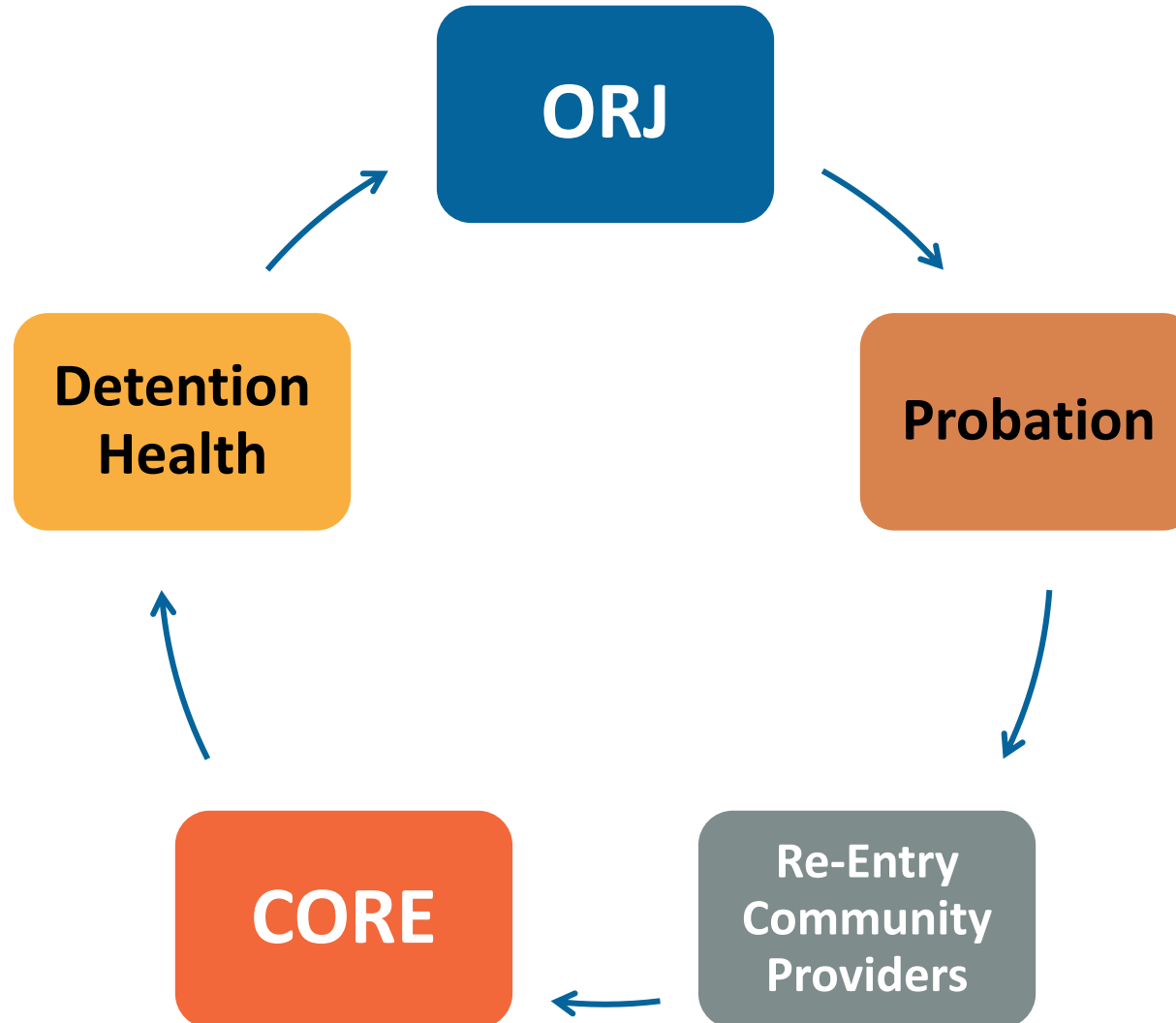
Supports pre-release planning to find housing prior to exiting incarceration



Ongoing engagement with newly released and all re-entry participants regardless of release date



# It Takes a Village





# Re-Entry Partnership & Process



**Bi-Monthly planning meetings with ORJ and Re-Entry partners**



**Housing Support Groups in Detention**



**Updated Referral Process:  
Re-Entry Client Referral Form**



**Pre and Post release planning**



# CORE Reentry Team

7/01/25 – 12/31/25

**2,183** services made to **283** unduplicated participants

159 individuals (56%) were previously *incarcerated*

**144** individuals (51%) currently on *Probation*

**238** individuals (84%) had *no income* at intake

**247 (87%)** individuals reported having a *disabling condition*

45 (16%) were *survivors of domestic violence*

99 (35%) were *first time homeless*

# CORE Reentry Team Exits

7/01/25 – 12/31/25

**181 individuals (74%) exited CORE to a more stable destination**

**Permanent  
Housing**

**23** exited to their own housing with a subsidy or permanently with friends/family

**Emergency  
shelter**

**22** were placed in emergency shelter

**Substance Use  
Treatment**

**133** went into a treatment or detox program

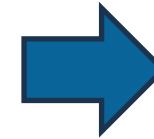


## Services Provided

7/01/25 – 12/31/25

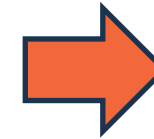
### Emergency Supplies

453 emergency supply/meals services to 228 participants



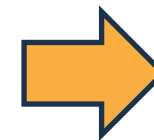
### Housing Coordination

639 housing coordination services to 276 participants



### Substance Use Treatment

133 substance use/detox treatment referrals or placements made





## CORE Housing Success



In a group session at Marsh Creek Detention Facility, CORE met an individual who was preparing for release without a housing plan and felt uncertain about entering a shelter or AOD program.



Through open conversation, encouragement, and shared lived experience, CORE shared what treatment could offer. Feeling supported rather than pressured, they agreed to pursue AOD treatment.



CORE quickly worked with the facility's AOD counselor to secure a treatment bed upon release. CORE was there at release and transported them to transition smoothly in the program.



The individual has fully engaged in treatment, completed 30 days, and have moved into a SLE. Today, they are attending meetings, seeking employment, and focusing on long-term stability.

**Housing-Focused Release Planning**

Call **211** and press **3** to connect to CORE.  
Press **\*Option 5\*** for those being released from incarceration

CORE operates **7 days a week 7am-12am**

For any questions, email  
**managementcore@cchealth.org**



[cchealth.org](http://cchealth.org)

**Thank You**