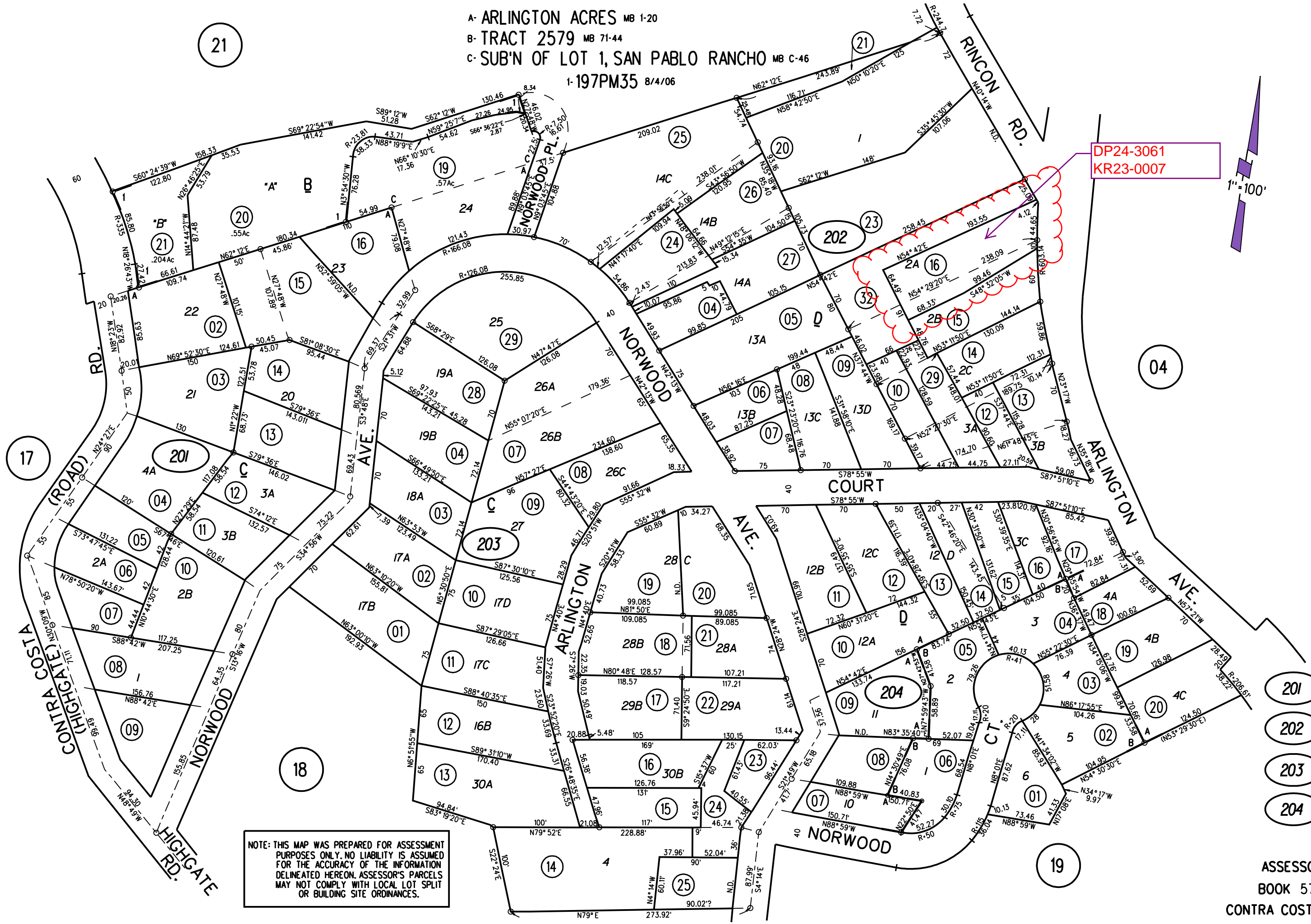
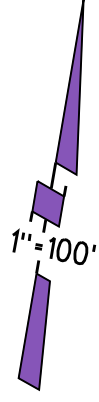


A- ARLINGTON ACRES MB 1-20
B- TRACT 2579 MB 71-44
C- SUB'N OF LOT 1, SAN PABLO RANCHO MB C-46
1-197PM35 8/4/06



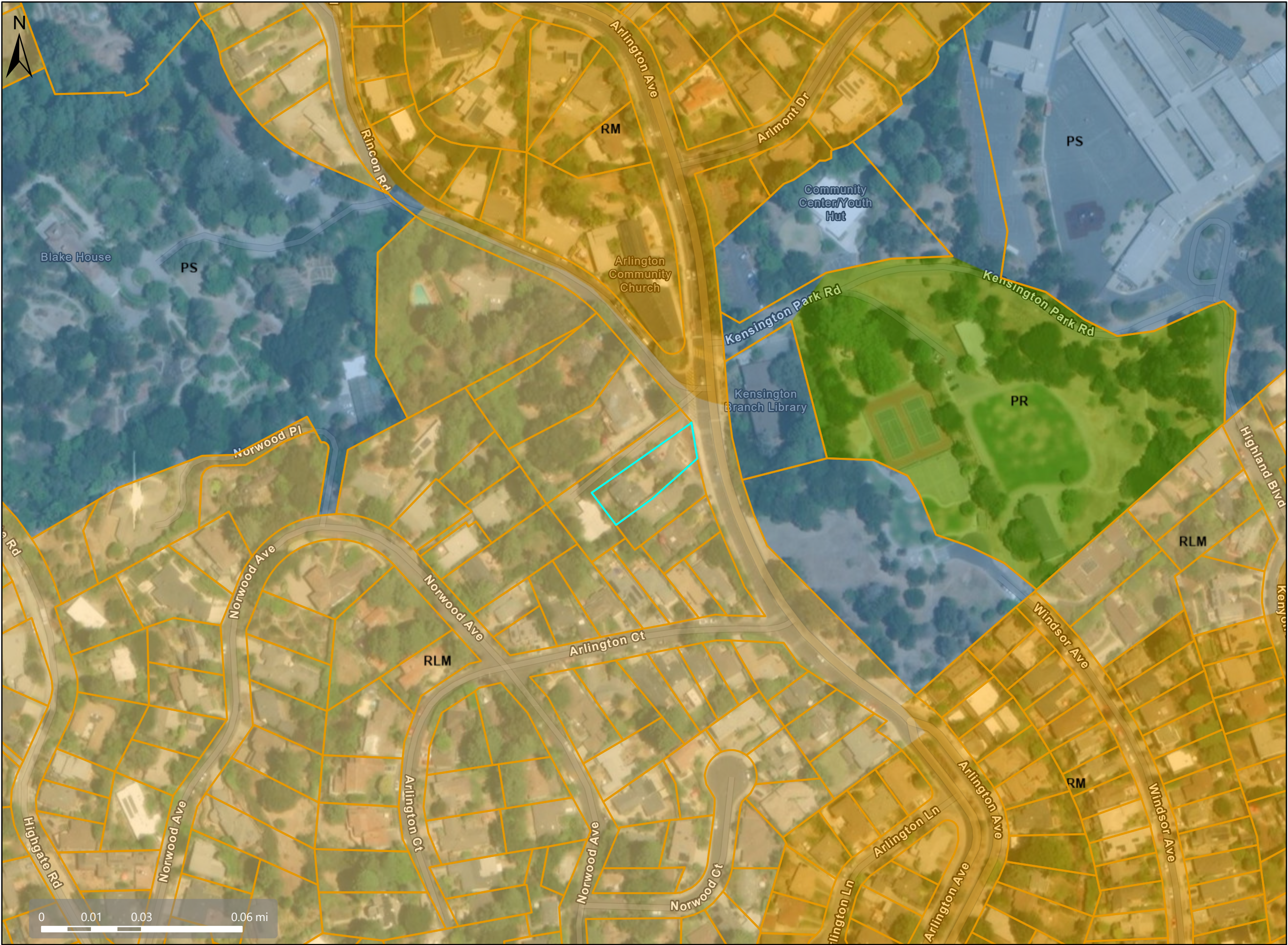
DP24-3061
KR23-0007



NOTE: THIS MAP WAS PREPARED FOR ASSESSMENT PURPOSES ONLY. NO LIABILITY IS ASSUMED FOR THE ACCURACY OF THE INFORMATION DELINEATED HEREON. ASSESSOR'S PARCELS MAY NOT COMPLY WITH LOCAL LOT SPLIT OR BUILDING SITE ORDINANCES.

- 201
- 202
- 203
- 204

General Plan: Residential Low Medium Density (RLM)



Map Legend

Assessment
Parcels

General Plan

RLM
(Residential
Low-Medium
Density) (3-7
du/na)

RM (Residential
Medium
Density) (7-17
du/na)

PS (Public and
Semi-Public)

PR (Park and
Recreation)

Zoning: Single-Family Residential (R-6); Kensington Combining District (-K); Tree Obstruction of Views (-TOV)



Map Legend

Assessment

Parcels

Zoning

ZONE_OVER

R-6 -TOV -K

(Tree

Obstruction and

Kensington)

Aerial Photo



Map Legend

- Assessment
- Parcels

This map is a user generated, static output from an internet mapping application and is intended for reference use only.
Data layers that appear on this map may or may not be accurate, current, or otherwise reliable.
THIS MAP IS NOT TO BE USED FOR NAVIGATION.
CCMap is maintained by Contra Costa County Department of Information Technology, County GIS.
Data layers contained within the CCMap application are provided by various Contra Costa County Departments.
Please direct all data inquiries to the appropriate department.

Spatial Reference
PCS: WGS 1984 Web Mercator Auxiliary Sphere
Datum: WGS 1984