



# Contra Costa County Climate Action Plan Update - No Waste





# NW-1

Ensure organics collection service is available for all residential and commercial customers in County-Controlled collection franchise areas





# NW-1

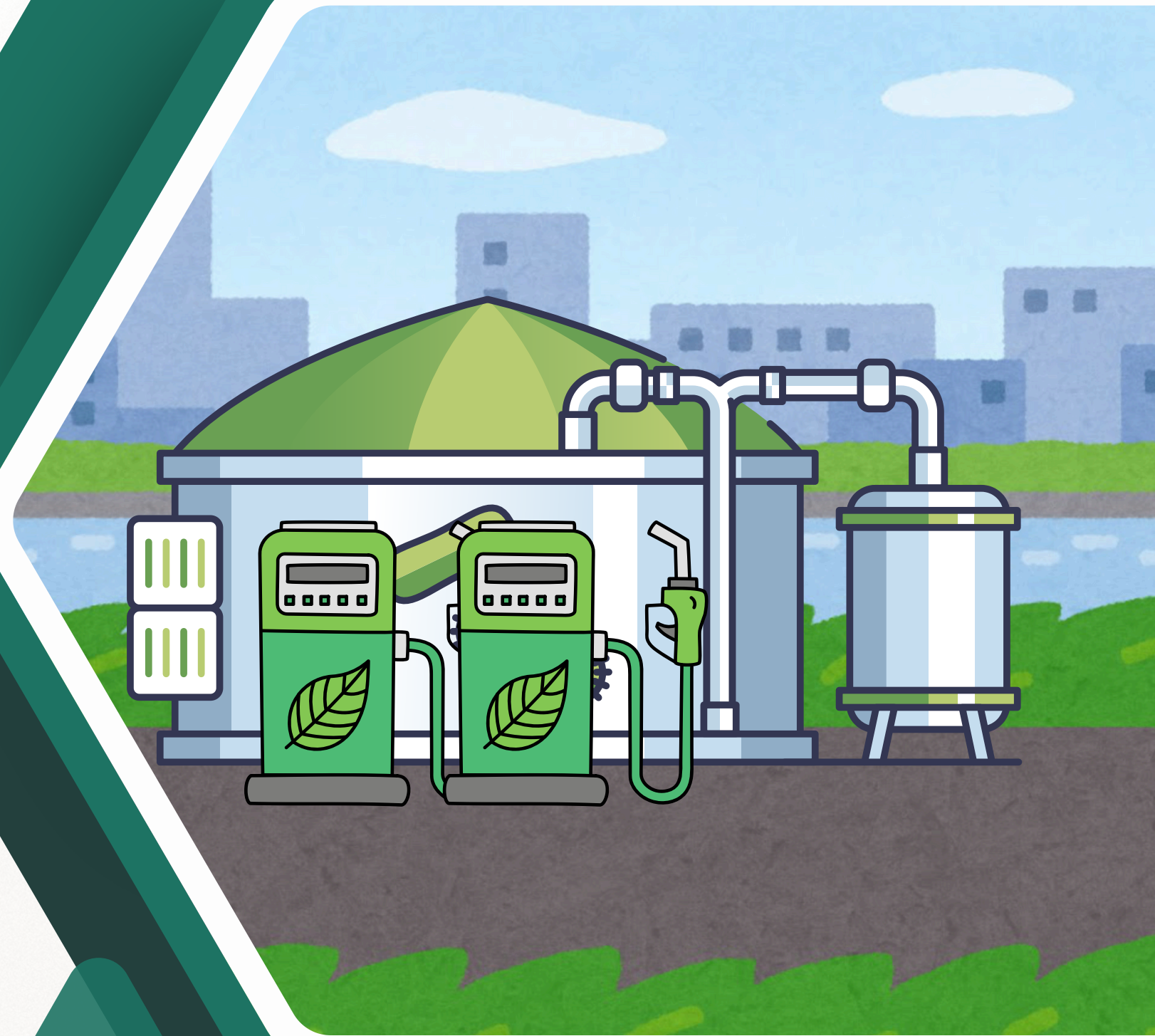
Require new or expanded landfill operations reduce GHG emissions





# NW-1

Explore use of organic waste for anaerobic digesters to generate electricity or fuel





# NW-1

Require edible food generators to  
partner with food rescue organizations  
to divert edible food





# NW-1

Collaborate with food rescue programs  
to decrease food waste and address  
hunger





# NW-1

Procure compost made from recovered  
organic waste in accordance with  
County Policy





# NW-2

Reduce waste from County operations





**I'd rather be  
baked than wasted.**



**NW-3**

Partner with regional agencies to  
promote refusing, reducing, and  
reusing materials

**#ShopYourFridgeFirst**  
**LoveFoodNotWaste.org**

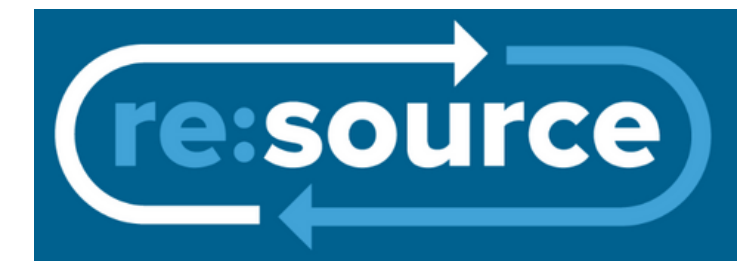






# NW-3

Promote better waste sorting  
among community





What do I do with:

Item name...

Near:

94553

 **SEARCH**

### Popular Items



Household Batteries



Clothing - Poor Condition



Old Working Computers



Broken Electronics



Broken Furniture



Furniture for Donation



Large Broken Appliances



Mattresses & Box Springs



Medications



Needles & Syringes



Leftover Paint



Styrofoam Blocks

[View All Items](#)



### Household Hazardous Waste

Safely deal with toxics in your home.

[Learn More](#)



### Curbside Service Information

Select your county and service area below to view information about your curbside collection service.

Alameda County



### Material Fact Sheets

Detailed information for tricky materials.

- Sustainable Spring Cleaning
- Furniture Repair
- Moving & Decluttering
- Bulky Items, DIY Renovations & Illegal

# NW-3

Promote better waste sorting  
among community







Welcome to RE:Source! Your online directory for reuse, repair and proper disposal options for the Bay Area. Although we do our best to stay up-to-date, information is constantly changing and we encourage you to call ahead to verify hours and availability.

Got it.

## Food Scraps

Remove all produce stickers (these are mostly plastic, contaminate compost, and belong in the trash), packaging, and twist ties (reuse until they go the landfill) before composting your food scraps.

Did you know that reducing food waste is one of the leading solutions to climate change? Click [here](#) Food Saving, Meal Planning, and Produce Storage Tips to save money and the planet.

[Here](#) are resources to learn how turn your food scraps into compost at home, or source [compost](#) (and mulch) to apply on your garden, houseplants, or landscape.

BioCycle's [FindAComposter.com](#) , a publicly searchable database of composting facilities in the U.S. and Canada.



[Moraga](#) accepts this item in your curbside organics container.



For Reuse/Repair

Free

Pickup Available

Online Services

### Waste Management of Alameda County

172 98th Ave., Oakland • (510) 613-8700

Commercial waste hauling service • Pick-up for a Fee

Compost

### O2 Artisans Aggregate (O2AA)

2311 Magnolia St, Oakland • (510) 251-8889

Some of our systems include aquaponic gardening and fish farming, solar power production, waste water digestion for re-use, the construction of a community kitchen space, bio-char and bio-chip production, composting facilities and up-cycling food waste to create a sustainable animal feed. • Free Drop-off

Reuse

### Davis Street (WM) Resource Recovery Complex (Transfer Station)

2615 Davis St., San Leandro • (510) 638-2303

Deposit plant debris, food scraps & food-soiled paper in the facility's designated "clean green" area. • Drop-off for a Fee

Compost

### EBMUD (East Bay Municipal Utility District)

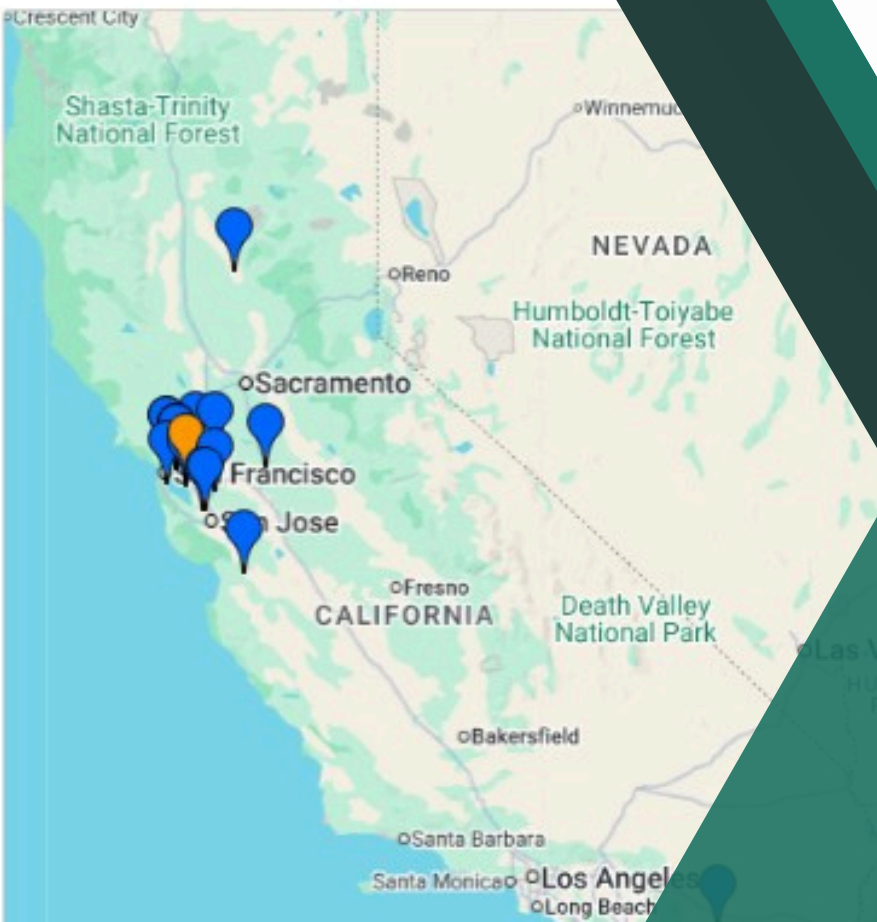
2020 Wake Ave, Oakland • 510-287-1651

Commercial quantity. Animal Processing Waste, Animal Blood (Beef, Poultry, Sheep, Swine/Pig) • Drop-off for a Fee, Pick-up for a Fee

Recycle

### Green Planet 21

Compost



# NW-3

Promote better waste sorting  
among community

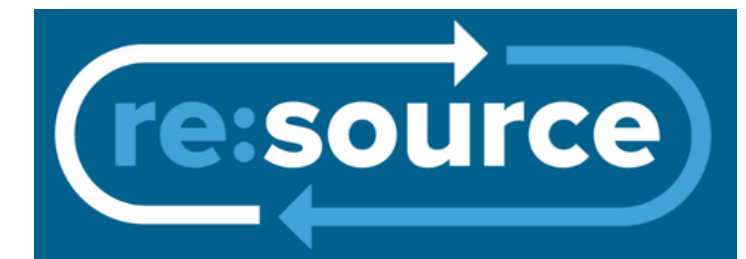






# NW-3

Promote better waste sorting  
among community







# NW-3

Work with Haulers to expand the types of materials accepted in recycling programs as economic conditions allow





# NW-3

Work with Haulers to continue to  
provide curbside recycling services







# NW-3

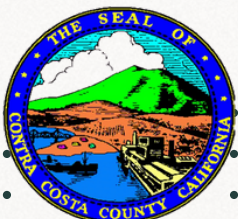
Promote RMDZ low-interest loan  
program for the development of  
businesses that use recycled  
materials





# NW-4

Encourage landfills to install or enhance existing methane capture technology to increase methane capture rate





# NW-4

Support landfill operators in efforts to transition away from landfill gas flaring





The background features a light gray area on the left and a white area on the right. A large, dark green diagonal shape separates the two. In the top right, there is a stylized landscape with a blue sky, a white cloud, and green rolling hills. The text 'Thank you' is prominently displayed in a dark green rounded rectangle on the left side.

# Thank you

Justin Sullivan  
Conservation and Development  
[Justin.Sullivan@dcd.cccounty.us](mailto:Justin.Sullivan@dcd.cccounty.us)