



Contra Costa County Delta Water Platform

Legislation Committees

April 9, 2025

What is the Delta Water Platform?



- Establishes priorities, principles, and policy statements that guide the Board of Supervisors and Water Agency's positions on key policy matters that would impact the County and the Delta
- Adopted by the Board of Supervisors in 2008 and updated in 2014

What's New in the Updated Delta Water Platform?

- Incorporates essential topics such as resilience to climate change and environmental justice
- Better addresses current conditions of the Delta ecosystem, communities, and economy and developments in water resilience technologies, strategies, and science
- Has been refined, expanded, and reorganized and includes new policies



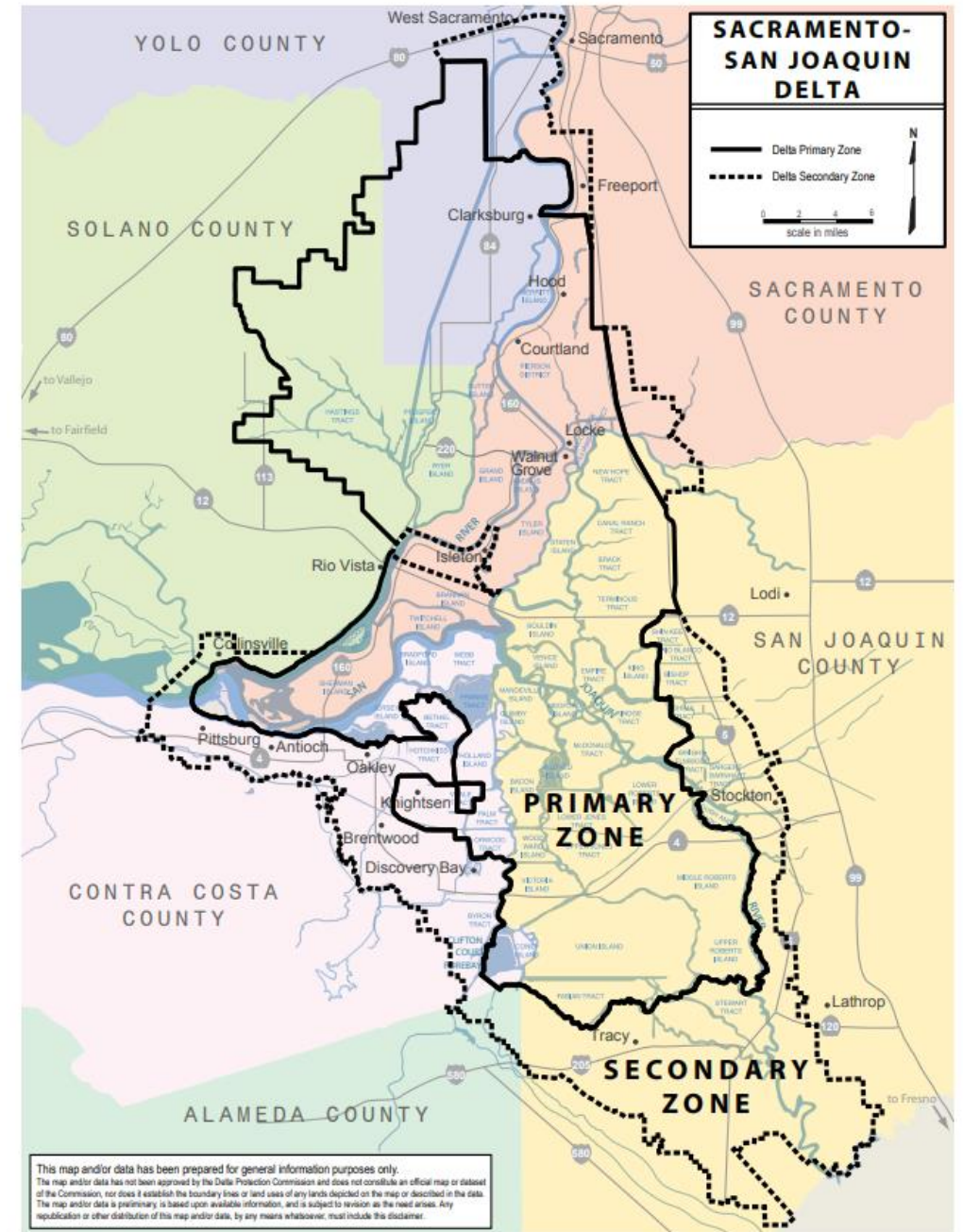
Contra Costa County Delta Water Platform

March 2025 Final Draft



The Sacramento-San Joaquin Delta

- Largest freshwater tidal estuary on the west coast of the Americas, draining a watershed stretching from the western Sierras to the Central Valley
- Provides invaluable ecological, economic, and cultural resources to Contra Costa County and the entire Delta region, as well as a portion of the drinking water for much of the population of California
- Designated by Congress as California's first National Heritage Area in 2019
- The eastern portion of Contra Costa County is located within the Delta, and the County's entire northern border is bounded by waterfront that flows from the Delta to the Bay



Jurisdictional Boundaries

- 1992 Delta Protection Act**

- ### Other Boundaries

- Map Created on January 9th, 2005
by Contra Costa County
Dept of Conservation and Development, GIS Group
30 Muir Road, Martinez, CA 94553
37:59:41.791N 122:07:03.750W

Policy Areas in the Platform

- **Conveyance**
- **Water Resources**
 - Governance and Delta Counties Coalition
 - Water Quality, Water Quantity, and Delta Outflow
 - Reduce Reliance on the Delta
 - Water Conservation
 - Flood Protection and Floodplain Management
 - Levee Maintenance and Restoration
 - New and Expanded Water Storage
 - East Contra Costa Subbasin Groundwater Management
- Water Rights and Legislative Protections
- Grassland Bypass Project
- San Francisco to Stockton Deep Water Ship Channel
- **Resilience to Climate Change (New)**
- **Communities**
 - Environmental Justice (New)
 - Economic Development (New)
 - Emergency Response
- **Environment**
 - Protect and Restore the Bay-Delta Ecosystem
 - Controlling Existing Invasive Species

The policy areas and policies are not ordered based on priority. The numerical order of the policies is used solely for the intention of organizing this document for reference.

Conveyance

Partial List of Platform Policies



- Support continued through-Delta conveyance, also known as the Freshwater Pathway, by protecting and improving Delta levees and channels.
- Support efforts that further the obligation of all users of water flowing through the Delta to restore, maintain, improve, and protect this shared resource and referred to as the “Delta pool” concept.
- Oppose isolated Delta conveyance projects.

Water Resources

Partial List of Platform Policies

Water Quality, Water Quantity, and Delta Outflow

- Advocate for increased freshwater flow from the Sacramento and San Joaquin Rivers through the Delta into San Francisco Bay as the best available science demonstrates is necessary to restore and sustain Bay-Delta ecosystems and conserve salmon and other native fish and wildlife.
- Explore opportunities to identify causes of and develop additional measures to detect, monitor, manage, and eliminate harmful algal blooms.

Levee Maintenance and Restoration

- Advocate for significant funding for western and central Delta levees to support water quality and the existing through-Delta Freshwater Pathway and to protect critical infrastructure



Resilience to Climate Change

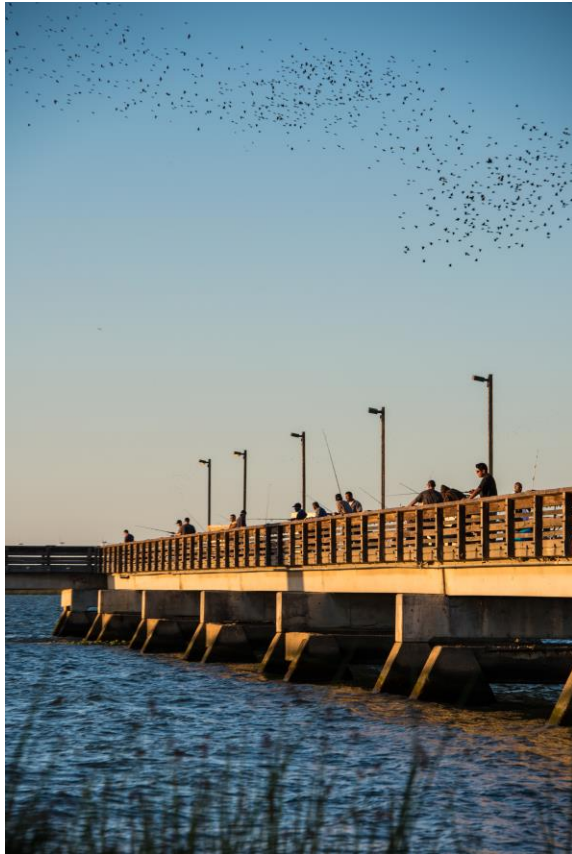
Partial List of Platform Policies



- Promote increased resilience to climate change in the most vulnerable Delta communities, including resilience to climate change hazards such as flooding, extreme heat, drought, severe storms, agricultural pests and diseases, and human health hazards, in alignment with the 2045 General Plan.
- Protect the unique physical characteristics in the Delta (e.g., hydrodynamics, levees, and Delta islands) as part of any plan developed for sea level rise.
- Support efforts that protect Delta water quality from increasing impacts of drought.

Communities

Partial List of Platform Policies



Environmental Justice

- Support and promote increased inclusion and participation of impacted Delta communities in decision-making processes that affect the Delta and its communities.
- Encourage infrastructure projects that increase public access to diverse, high-quality parks, green spaces, recreational facilities, trails, and natural environments in impacted Delta communities, including enhancements to existing marinas, shorelines, and regional parks.

Economic Development

- Promote and protect recreation opportunities in the Delta.

Emergency Response

- Support collaborative efforts to improve emergency response among the Delta counties to help protect life, property, and the environment; ensure continued operation of critical facilities and infrastructure; and support a rapid recovery in the short, medium, and long term.

Environment

Partial List of Platform Policies

Protect and Restore the Bay-Delta Ecosystem

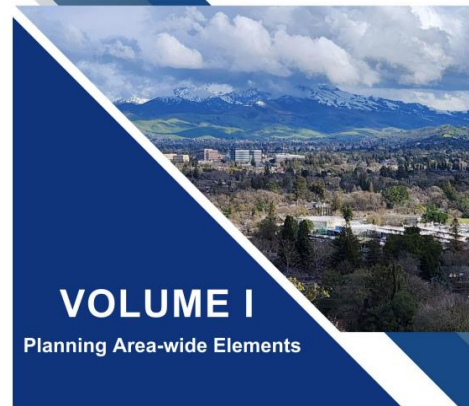
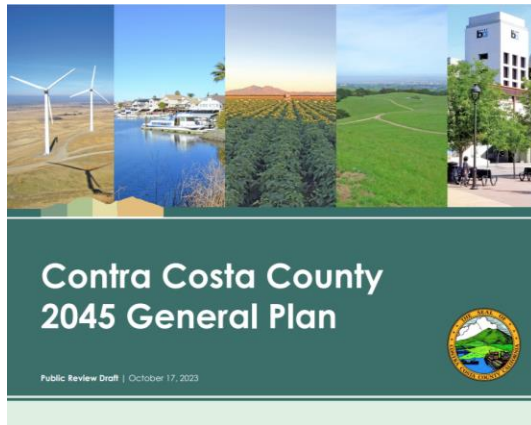
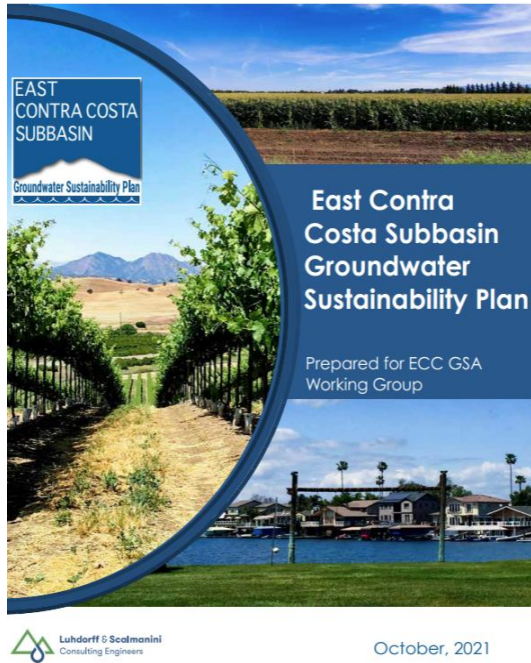
- Support efforts to increase the health of the Bay-Delta and tributary watersheds.
- Support efforts to promote public involvement in Bay-Delta protection and restoration.



Controlling Existing Invasive Species

- Encourage implementation of systemic monitoring systems for invasive species and encourage agencies to collaborate on development of coordinated monitoring strategies.





Plan Integration

- General Plan & Climate Action and Adaptation Plan Update
- East Contra Costa Groundwater Sustainability Plan
- Local Hazard Mitigation Plan
- Drought Resilience Plan (SB 552)
- Contra Costa Resilient Shoreline Plan

Process & Next Steps





Thank you!

Contact Ryan Hernandez with any questions.

Ryan.Hernandez@dcd.cccounty.us

925-655-2919