




### Map Legend

-  Assessment Parcels
- Planning Layers (DCD)**
-  Unincorporated
-  Board of Supervisors' Districts



This map is a user generated, static output from an internet mapping application and is intended for reference use only. Data layers that appear on this map may or may not be accurate, current, or otherwise reliable.

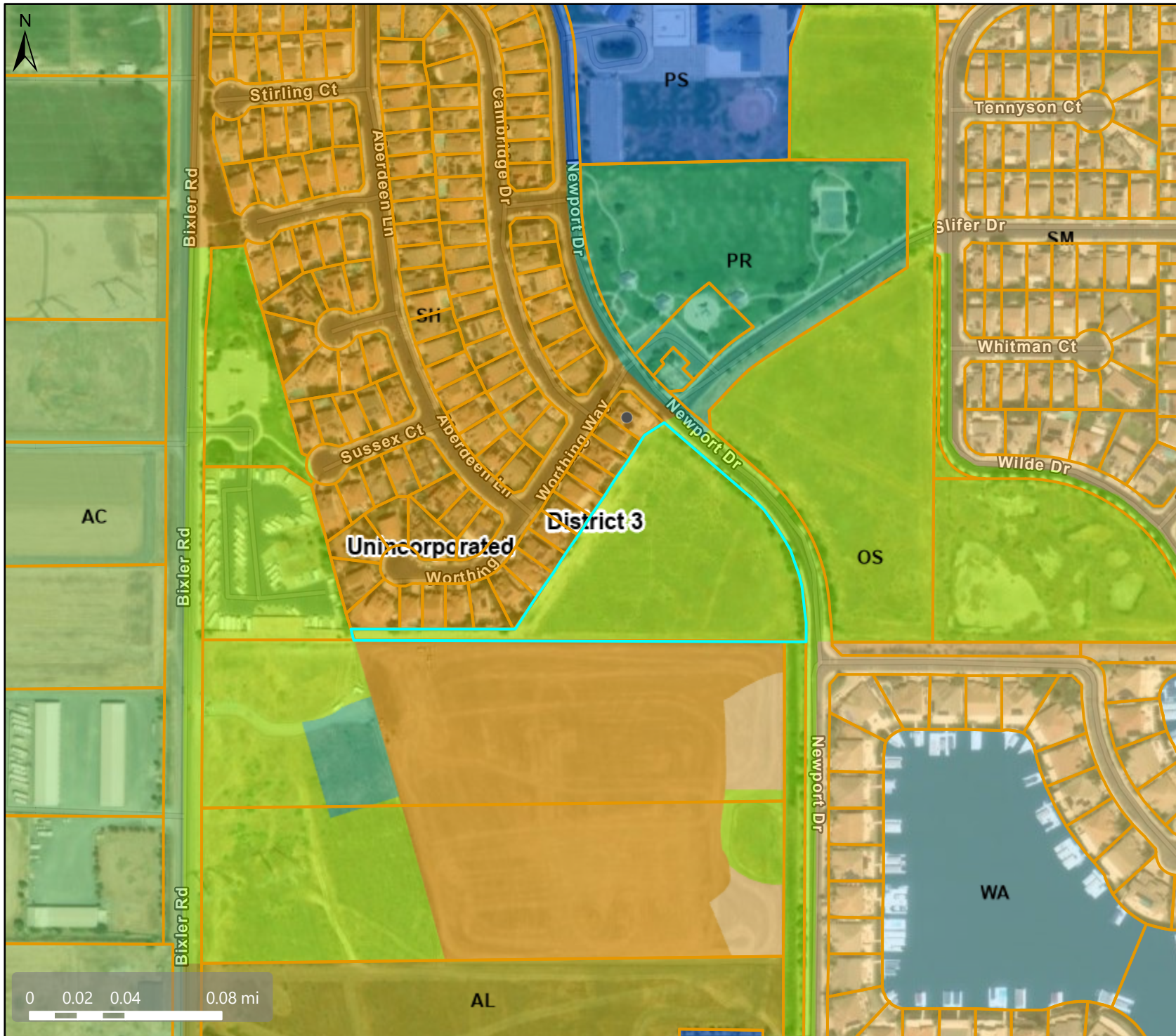
**THIS MAP IS NOT TO BE USED FOR NAVIGATION.**

CCMap is maintained by Contra Costa County Department of Information Technology, County GIS. Data layers contained within the CCMap application are provided by various Contra Costa County Departments. Please direct all data inquiries to the appropriate department.

Spatial Reference  
 PCS: WGS 1984 Web Mercator Auxiliary Sphere  
 Datum: WGS 1984



# General Plan Designation



## Map Legend

- Assessment Parcels
- Planning Layers (DCD)**
- General Plan**
- SM (Single Family Residential - Medium) 3.0 - 4.9 Units per Net Acre
- SH (Single Family Residential - High) 5.0 - 7.2 Units per Net Acre
- PS (Public/Semi-Public)
- PR (Parks and Recreation)
- OS (Open Space)
- AL (Agricultural Lands) 5 Acre Minimum Parcel Size
- AC (Agricultural Core) 40 Acre Minimum Parcel Size
- WA (Water)
- Unincorporated
- Board of Supervisors' Districts

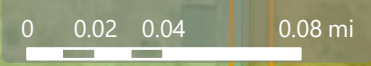


This map is a user generated, static output from an internet mapping application and is intended for reference use only. Data layers that appear on this map may or may not be accurate, current, or otherwise reliable.

**THIS MAP IS NOT TO BE USED FOR NAVIGATION.**

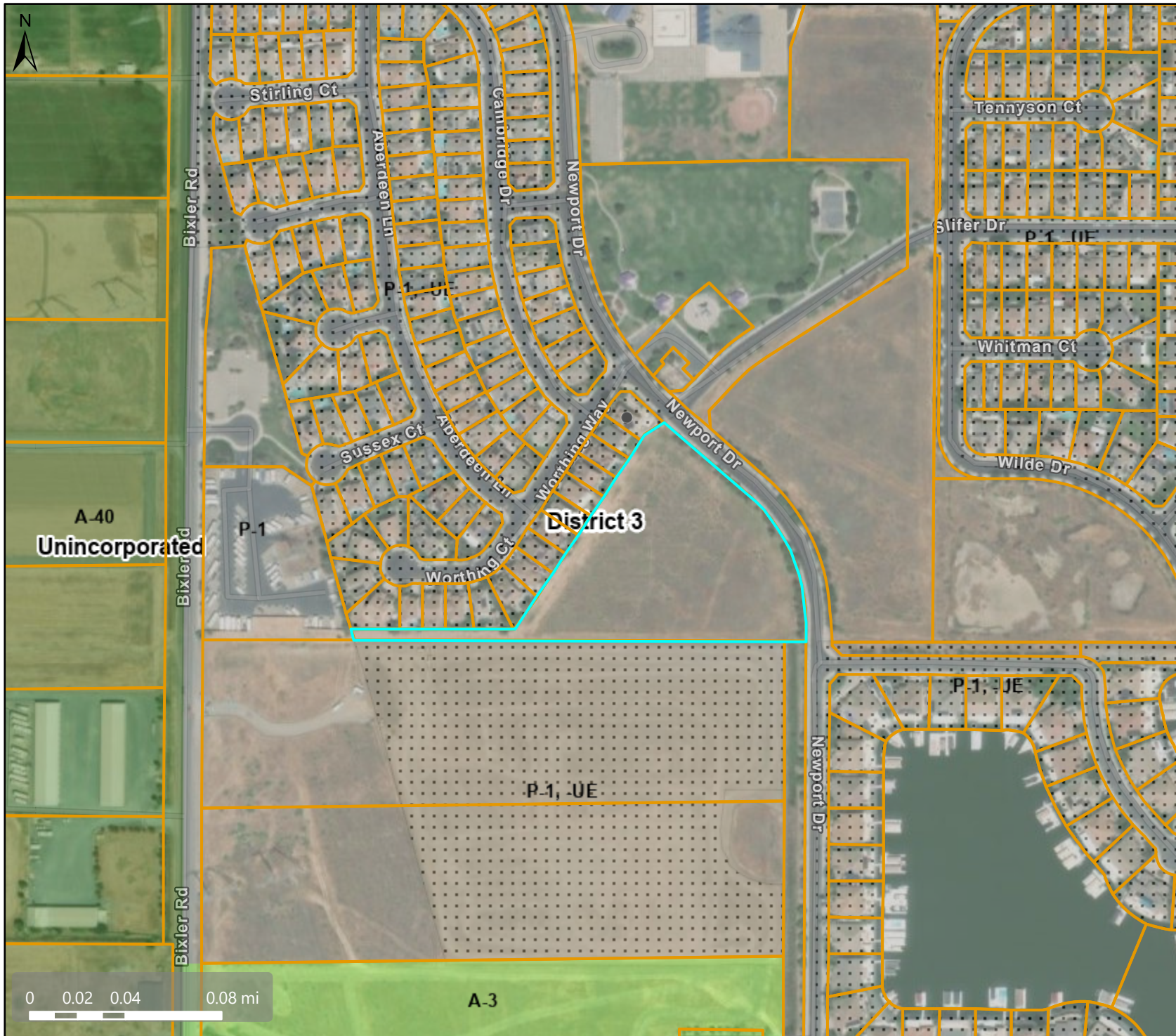
CCMap is maintained by Contra Costa County Department of Information Technology, County GIS. Data layers contained within the CCMap application are provided by various Contra Costa County Departments. Please direct all data inquiries to the appropriate department.

**Spatial Reference**  
 PCS: WGS 1984 Web Mercator Auxiliary Sphere  
 Datum: WGS 1984





# Zoning District



## Map Legend

- Assessment Parcels
- Planning Layers (DCD)**
- Zoning**
- ZONE\_OVER**
- A-3 (Heavy Agriculture)
- A-40 (Exclusive Agriculture)
- P-1 (Planned Unit)
- P-1 -UE (Urban Farm Animal Exclusion)
- Unincorporated
- Board of Supervisors' Districts



This map is a user generated, static output from an internet mapping application and is intended for reference use only. Data layers that appear on this map may or may not be accurate, current, or otherwise reliable.

**THIS MAP IS NOT TO BE USED FOR NAVIGATION.**

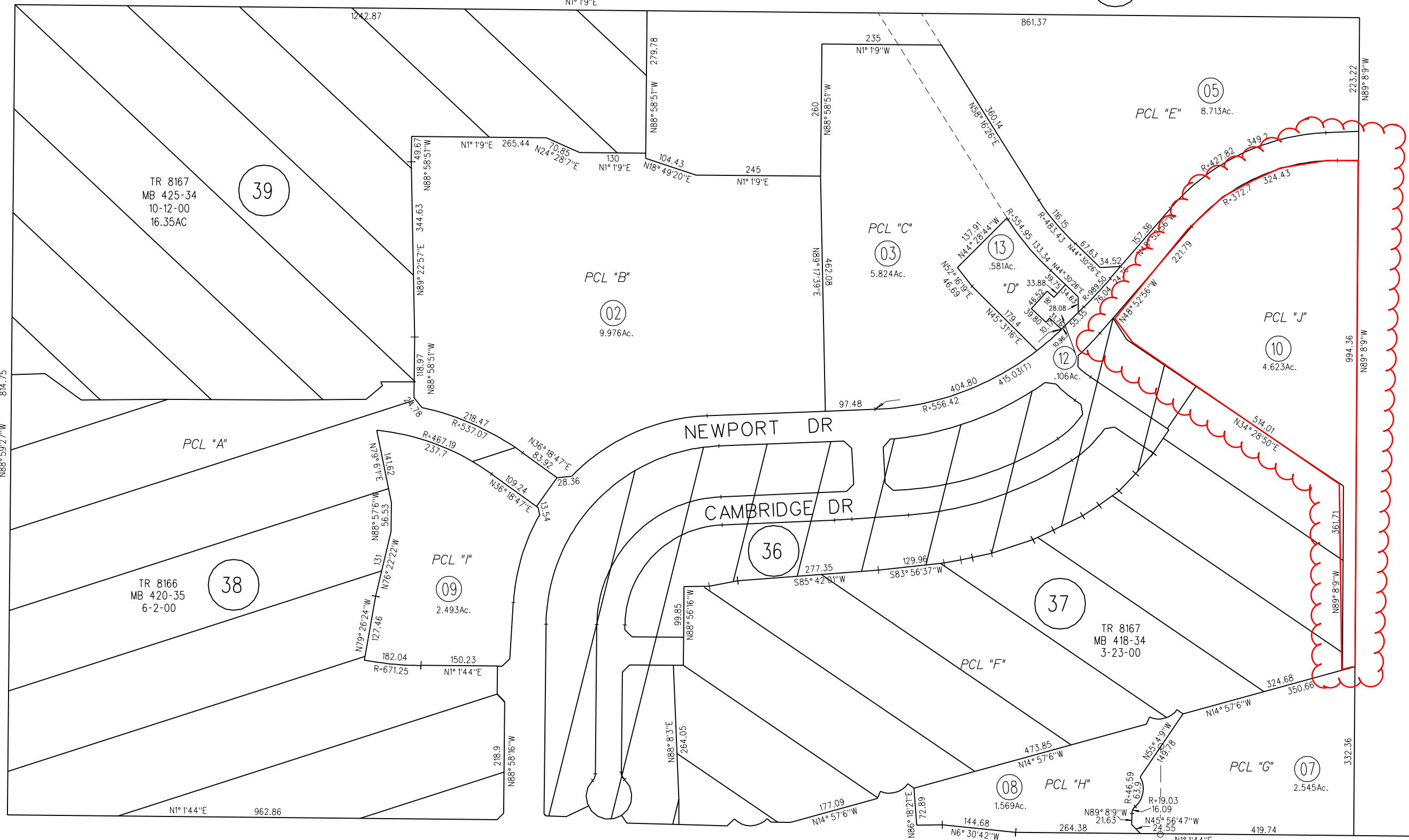
CCMap is maintained by Contra Costa County Department of Information Technology, County GIS. Data layers contained within the CCMap application are provided by various Contra Costa County Departments. Please direct all data inquiries to the appropriate department.

**Spatial Reference**  
 PCS: WGS 1984 Web Mercator Auxiliary Sphere  
 Datum: WGS 1984



23

POINT OF TIMBER RD



22

TR 8167  
MB 425-34  
10-12-00  
16.35Ac

TR 8166  
MB 420-35  
6-2-00

PCL "E" 8.713Ac.

PCL "C" 5.824Ac.

PCL "B" 9.976Ac.

PCL "J" 4.623Ac.

PCL "I" 2.493Ac.

TR 8167  
MB 418-34  
3-23-00

PCL "H" 1.569Ac.

PCL "G" 2.545Ac.

BIXLER RD

350

12

4/23/03

NOTE: THIS MAP WAS PREPARED FOR ASSESSMENT PURPOSES ONLY. NO LIABILITY IS ASSUMED FOR THE ACCURACY OF THE INFORMATION DELINEATED HEREON. ASSESSOR'S PARCELS MAY NOT COMPLY WITH LOCAL LOT SPLIT OR BUILDING SITE ORDINANCES.

38