

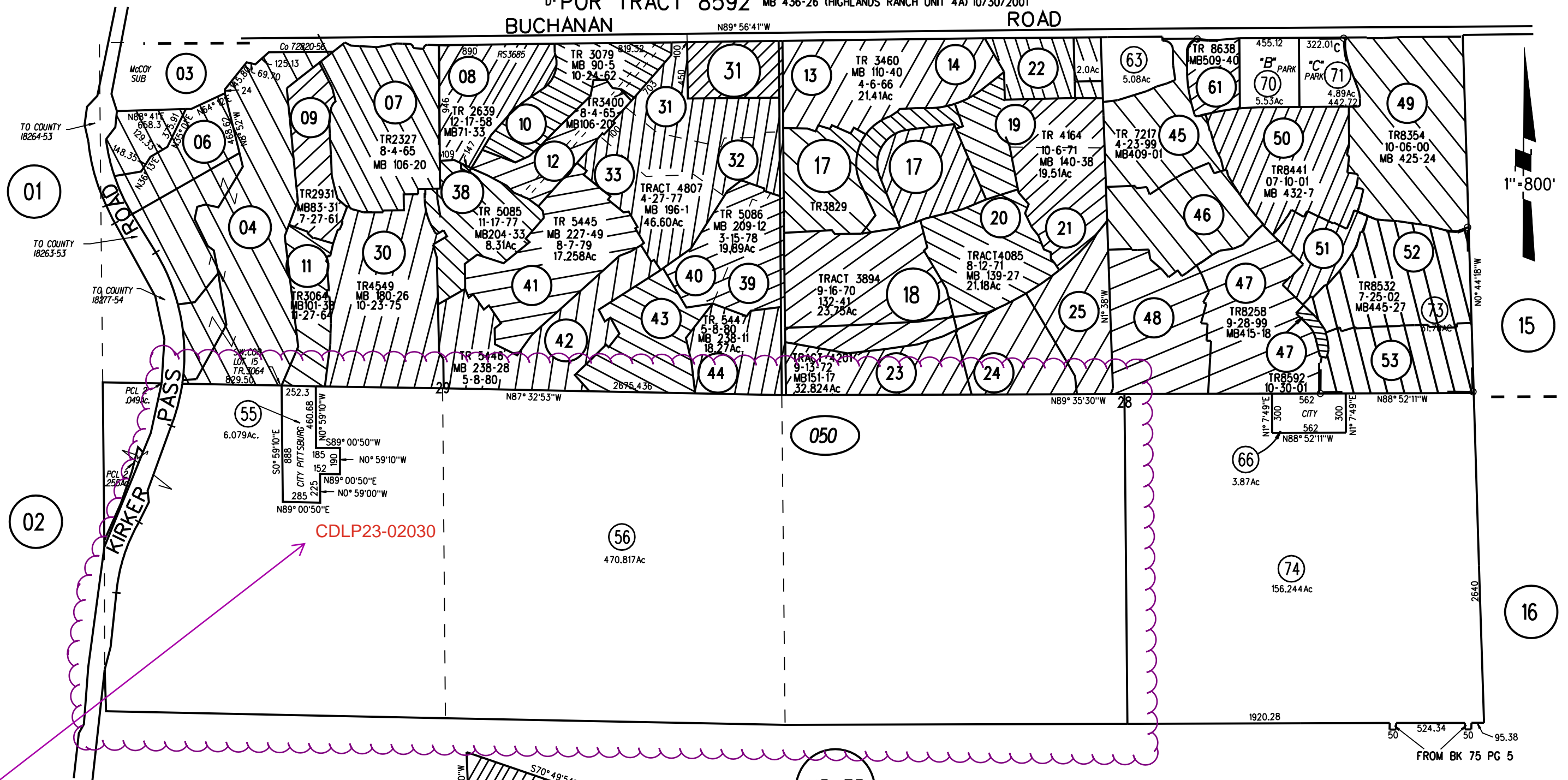
SEC 28 & 29 T2N R1E MDB&M

MB 87

MB 88

- A- POR TRACT 7217 MB 409-1 (HIGHLANDS RANCH UNIT 1) 4/23/1999
- B- PCL A TRACT 8354 MB 425-24 (HIGHLANDS RANCH UNIT 3) 10/06/2000
- C- POR TRACT 8441 MB 432-7 (HIGHLANDS RANCH UNIT 4) 7/10/2001
- D- POR TRACT 8592 MB 436-26 (HIGHLANDS RANCH UNIT 4A) 10/30/2001

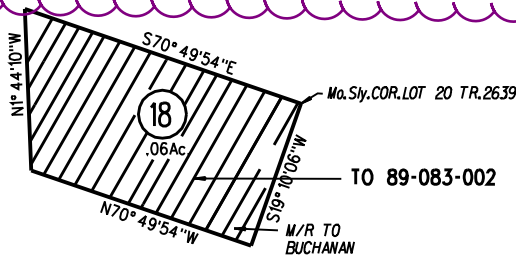
BUCHANAN ROAD



CDLP23-02030

Project Site

NOTE: THIS MAP WAS PREPARED FOR ASSESSMENT PURPOSES ONLY. NO LIABILITY IS ASSUMED FOR THE ACCURACY OF THE INFORMATION DELINEATED HEREON. ASSESSOR'S PARCELS MAY NOT COMPLY WITH LOCAL LOT SPLIT OR BUILDING SITE ORDINANCES.



050

74

10/29/13

General Plan: Agricultural Lands (AL)



Legend

City Limits

Unincorporated

Highways

Highways Bay Area

General Plan

SV (Single Family Residential - Ver

SL (Single Family Residential - Low

SM (Single Family Residential - Me

SH (Single Family Residential - Hig

ML (Multiple Family Residential - Lc

MM (Multiple Family Residential - M

MH (Multiple Family Residential - H

MV (Multiple Family Residential - V

MS (Multiple Family Residential - V

CC (Congregate Care/Senior Housi

MO (Mobile Home)

M-1 (Parker Avenue Mixed Use)

M-2 (Downtown/Waterfront Rodeo I

M-3 (Pleasant Hill BART Mixed Use

M-4 (Willow Pass Road Mixed Use)

M-5 (Willow Pass Road Commercia

M-6 (Bay Point Residential Mixed U

M-7 (Pittsburg/Bay Point BART Sta

M-8 (Dougherty Valley Village Cent

M-9 (Montalvin Manor Mixed Use)

M-10 (Willow Pass Business Park M

M-11 (Appian Way Mixed Use)

M-12 (Triangle Area Mixed Use)

M-13 (San Pablo Dam Road Mixed

M-14 (Heritage Mixed Use)

CO (Commercial)

OF (Office)

BP (Business Park)

LI (Light Industry)

HI (Heavy Industry)

AL, OIBA (Agricultural Lands & Off

CR (Commercial Recreation)

ACO (Airport Commercial)

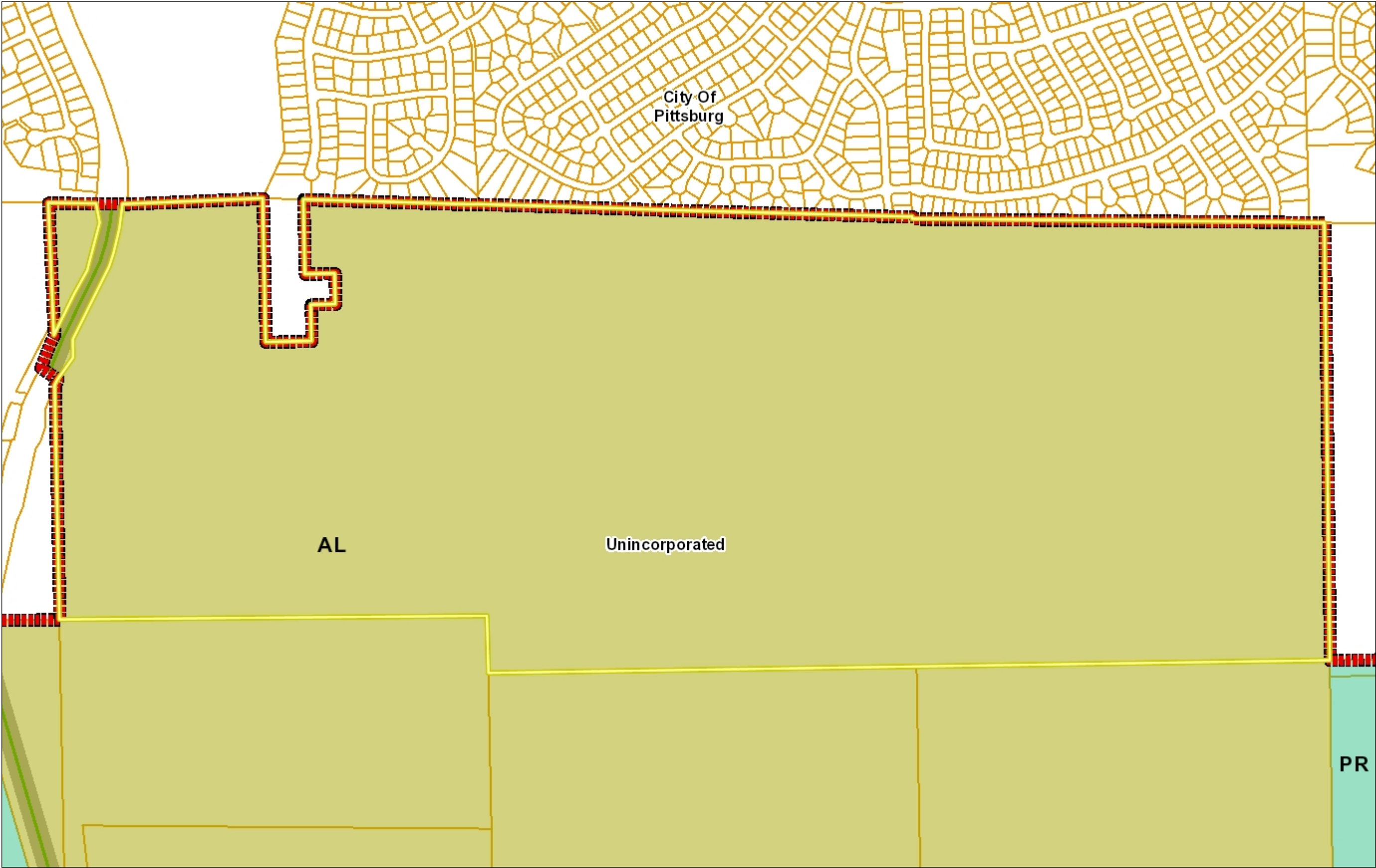
LF (Landfill)

1: 9,028



Notes

CDLP23-02030



0.3 0 0.14 0.3 Miles

WGS_1984_Web_Mercator_Auxiliary_Sphere

This map is a user generated static output from an Internet mapping site and is for reference only. Data layers that appear on this map may or may not be accurate, current, or otherwise reliable.

THIS MAP IS NOT TO BE USED FOR NAVIGATION

Zoning: A-4 Agricultural Preserve District



Legend

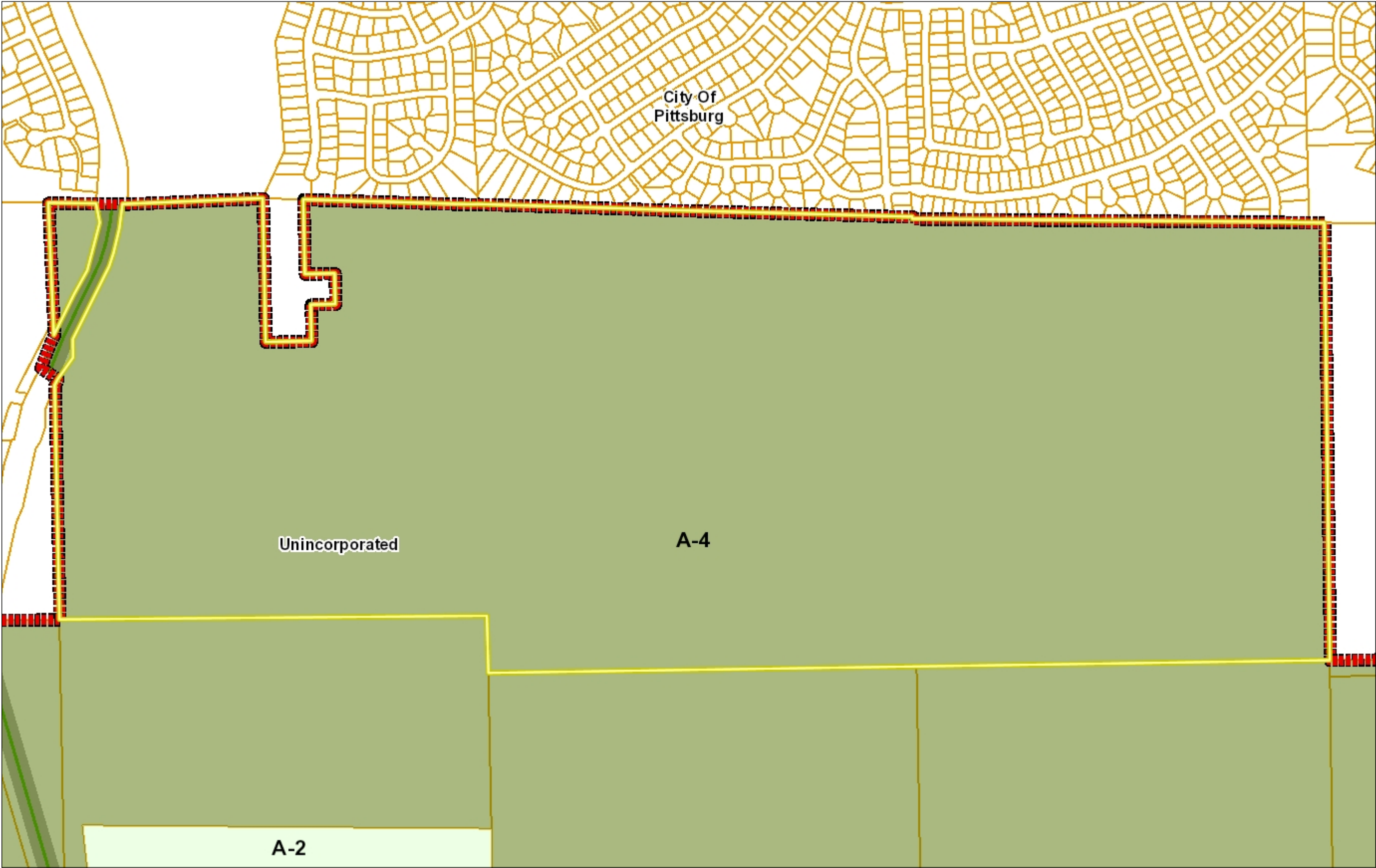
- City Limits
- Unincorporated
- Highways
- Highways Bay Area
- Zoning**
 - R-6 (Single Family Residential)
 - R-6, -FH -UE (Flood Hazard and A
 - R-6 -SD-1 (Slope Density Hillside I
 - R-6 -TOV -K (Tree Obstruction anc
 - R-6, -UE (Urban Farm Animal Excl
 - R-6 -X (Railroad Corridor Combinir
 - R-7 (Single Family Residential)
 - R-7 -X (Railroad Corridor Combinir
 - R-10 (Single Family Residential)
 - R-10, -UE (Urban Farm Animal Exc
 - R-12 (Single Family Residential)
 - R-15 (Single Family Residential)
 - R-20 (Single Family Residential)
 - R-20, -UE (Urban Farm Animal Exc
 - R-40 (Single Family Residential)
 - R-40, -FH -UE (Flood Hazard and A
 - R-40, -UE (Urban Farm Animal Exc
 - R-65 (Single Family Residential)
 - R-100 (Single Family Residential)
 - D-1 (Two Family Residential)
 - D-1 -T (Transitional Combining Dist
 - D-1, -UE (Urban Farm Animal Excl
 - M-12 (Multiple Family Residential)
 - M-12 -FH (Flood Hazard Combining
 - M-17 (Multiple Family Residential)
 - M-29 (Multiple Family Residential)
 - F-R (Forestry Recreational)
 - F-R -FH (Flood Hazard Combining I
 - F-1 (Water Recreational)
 - F-1 -FH (Flood Hazard Combining I
 - A-2 (General Agriculture)
 - A-2, -BS (Boat Storage Combining I
 - A-2, -BS -SG (Boat Storage and So
 - A-2 -FH (Flood Hazard Combining I

1: 9,028



Notes

CDLP23-02030



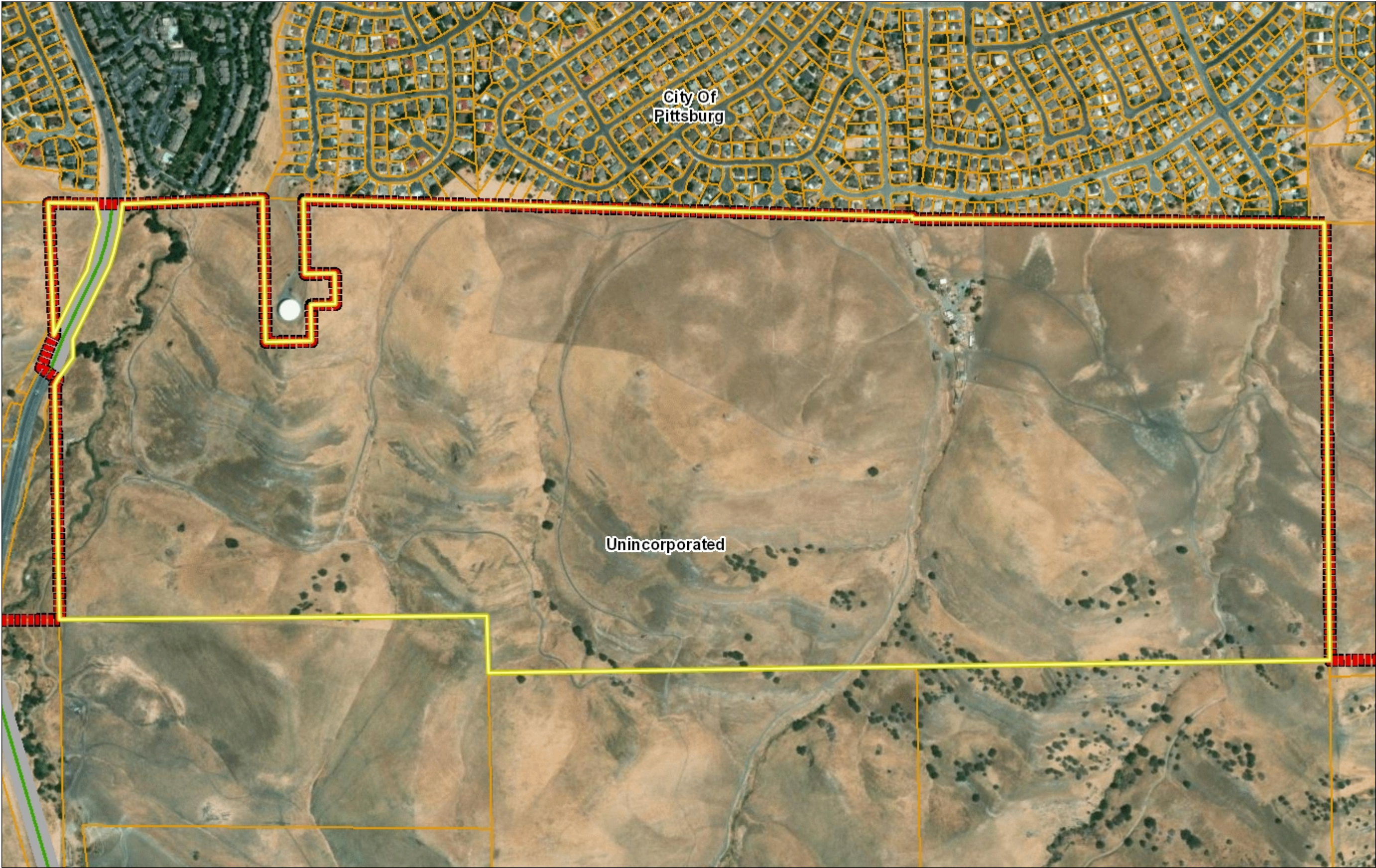
0.3 0 0.14 0.3 Miles

WGS_1984_Web_Mercator_Auxiliary_Sphere

This map is a user generated static output from an Internet mapping site and is for reference only. Data layers that appear on this map may or may not be accurate, current, or otherwise reliable.
THIS MAP IS NOT TO BE USED FOR NAVIGATION



- Legend
- City Limits
 - Unincorporated
 - Highways
 - Highways Bay Area
 - Maintained Roads
 - Water Bodies
 - County Boundary
 - Bay Area Counties
 - Assessment Parcels
 - World Imagery
 - Low Resolution 15m Imagery
 - High Resolution 60cm Imagery
 - High Resolution 30cm Imagery
 - Citations



This map is a user generated static output from an Internet mapping site and is for reference only. Data layers that appear on this map may or may not be accurate, current, or otherwise reliable.
THIS MAP IS NOT TO BE USED FOR NAVIGATION

1: 9,028

A simple black arrow pointing upwards, indicating North.

Notes
CDLP23-02030