



# Community Advisory Board (CAB)



# CAB Overview

- **Structure**
- **Responsibilities/Functions**
- **Standing Committees**
- **How to reach out to the CAB**



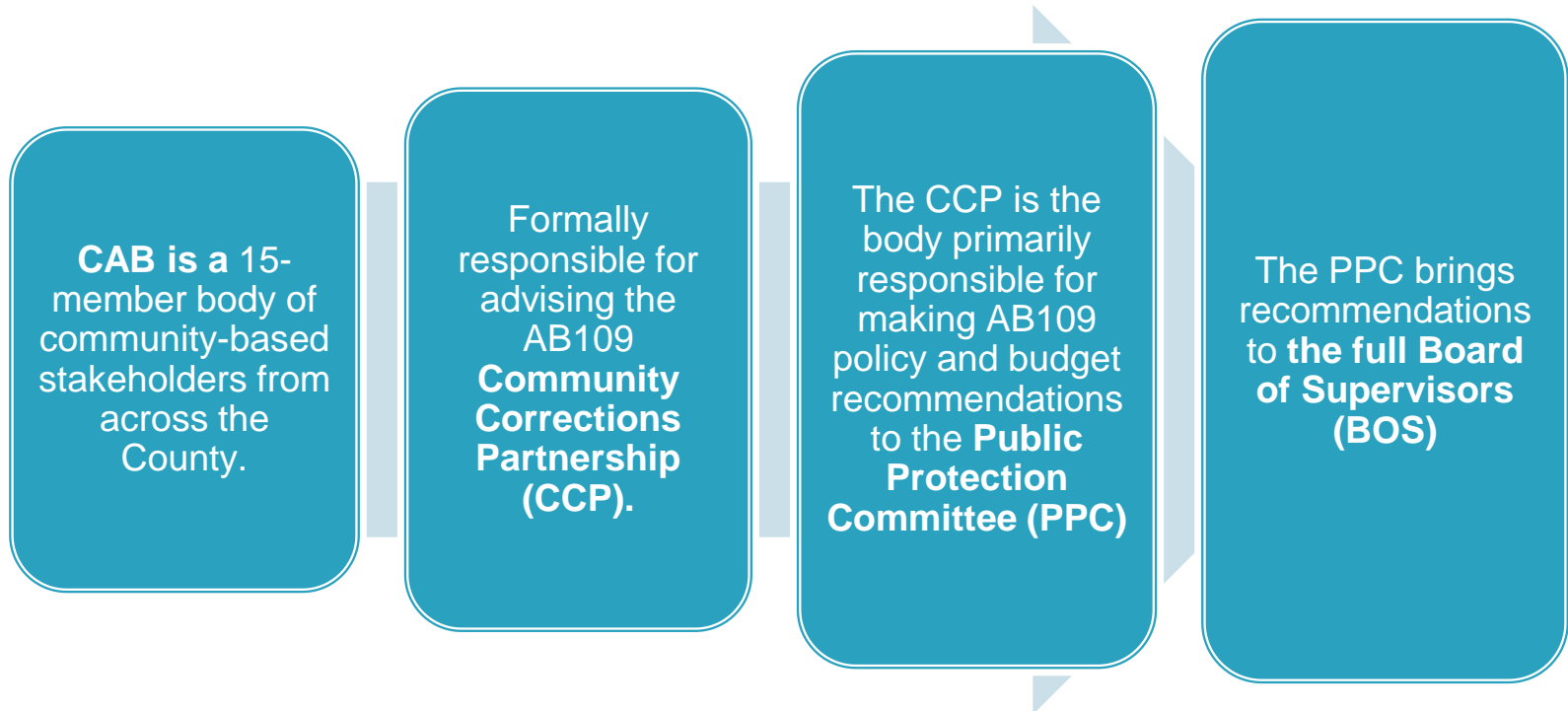
# AB 109 REALIGNMENT IN CONTRA COSTA COUNTY

- **Assembly Bill 109 (AB 109)**
- **Focus of AB 109**

# What is the Community Advisory Board (CAB)?



# CAB STRUCTURE AND PURPOSE



# Role and Function

Advises CCP by providing input on community needs;

Assesses implementation of the County's Reentry Strategic Plan;

Reviews data on realignment outcomes;

Advises CCP on community engagement strategies;

Offers recommendations for ongoing realignment planning;

Advises county agencies regarding implementation of programs;

Encourages outcomes that are consistent with the County's Reentry Strategic Plan



# CAB standing committees

- **Policy & Budget**
- **Program & Services**
- **Outreach & Community Engagement**



# Policy & Budget Subcommittee

- **Works collaboratively with CAB related workgroups/committees**
- **Develops a policy agenda and makes recommendations as related to Reentry programs, services and population.**
- **Assists CAB with developing an Annual Budget Request**
- **Analyzes and makes recommendations to improve departmental budget development reporting and analysis**
- **Identifies financial needs for training and consultation for the CAB**





# Program & Services Subcommittee

- **Recommends program related policy around existing and new funding opportunities.**
- **Engages providers to educate CAB and/or Committee Members about their work, outcome, needs, and recommendations.**
- **Promotes a structure for and implementation of a comprehensive needs assessment for the County's reentry population to inform future program recommendations/funding allocations.**
- **Participates in RFP development process and panels.**
- **As directed by the CAB, assigns Committee members to serve as formal liaison to County programs, offices, and agencies.**

# Outreach & Community Engagement Subcommittee



- Establishes outreach methods to engage the community regarding specific initiatives and platforms related to realignment.
- Improves public access to information regarding realignment and reentry efforts throughout the County and local areas.
- Membership cultivation, new member orientation & succession planning for CAB
- Facilitates CAB's Ambassador Program



# GET INVOLVED WITH THE CAB

- CAB is continually accepting applications from people who are interested in joining the CAB.
- CAB members must reside or work in Contra Costa County.
- One year commitment, with three year maximum
- Applications are accessible through the CAB website:  
<https://www.contracosta.ca.gov/4165/Community-Advisory-Board-CAB>
- Anyone interested in public safety, reentry, and justice system issues is encouraged to apply!



# GET INVOLVED WITH THE CAB

- **CAB meets the 2nd Thursday of every month.**
- **10 AM to 12 PM.**
- **Meetings are held in person.**
- **CAB meetings are open to the public.**



# CONTACT US

CAB Chair – Nicole Green: (510) 424-9844;  
Nicolegreen2@outlook.com

CAB Vice Chair – Justin Van Zerber

CAB Secretary – Rena Moore

Program & Services Subcommittee Chair – Tiffany Anaya

Outreach & Community Engagement Subcommittee Chair –  
Marcus Dawal (Interim)

Policy & Budget Subcommittee Chair – Justin Van Zerber



**THANK YOU!**