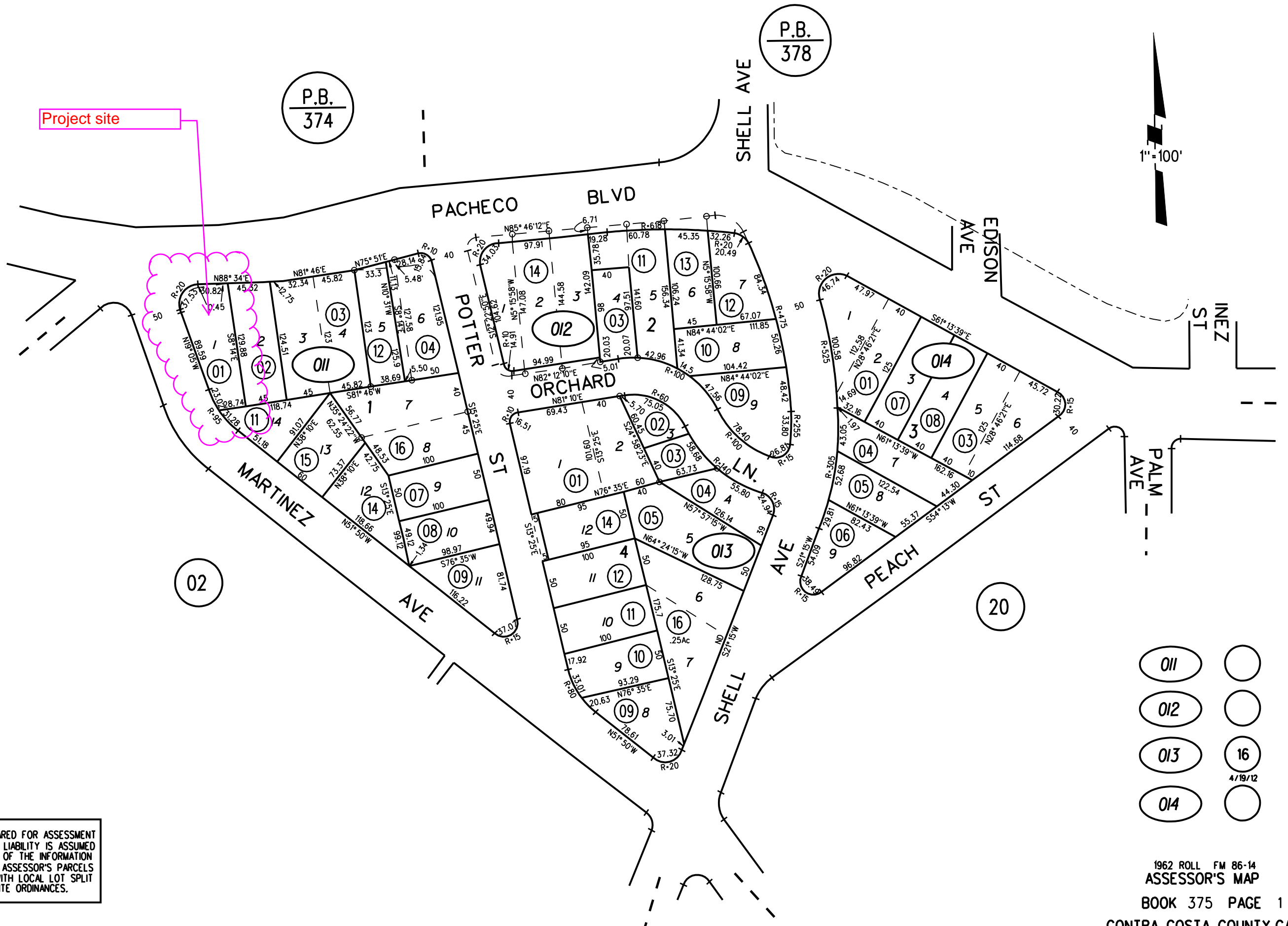


MARTINEZ LAND CO TRACT NO. 1

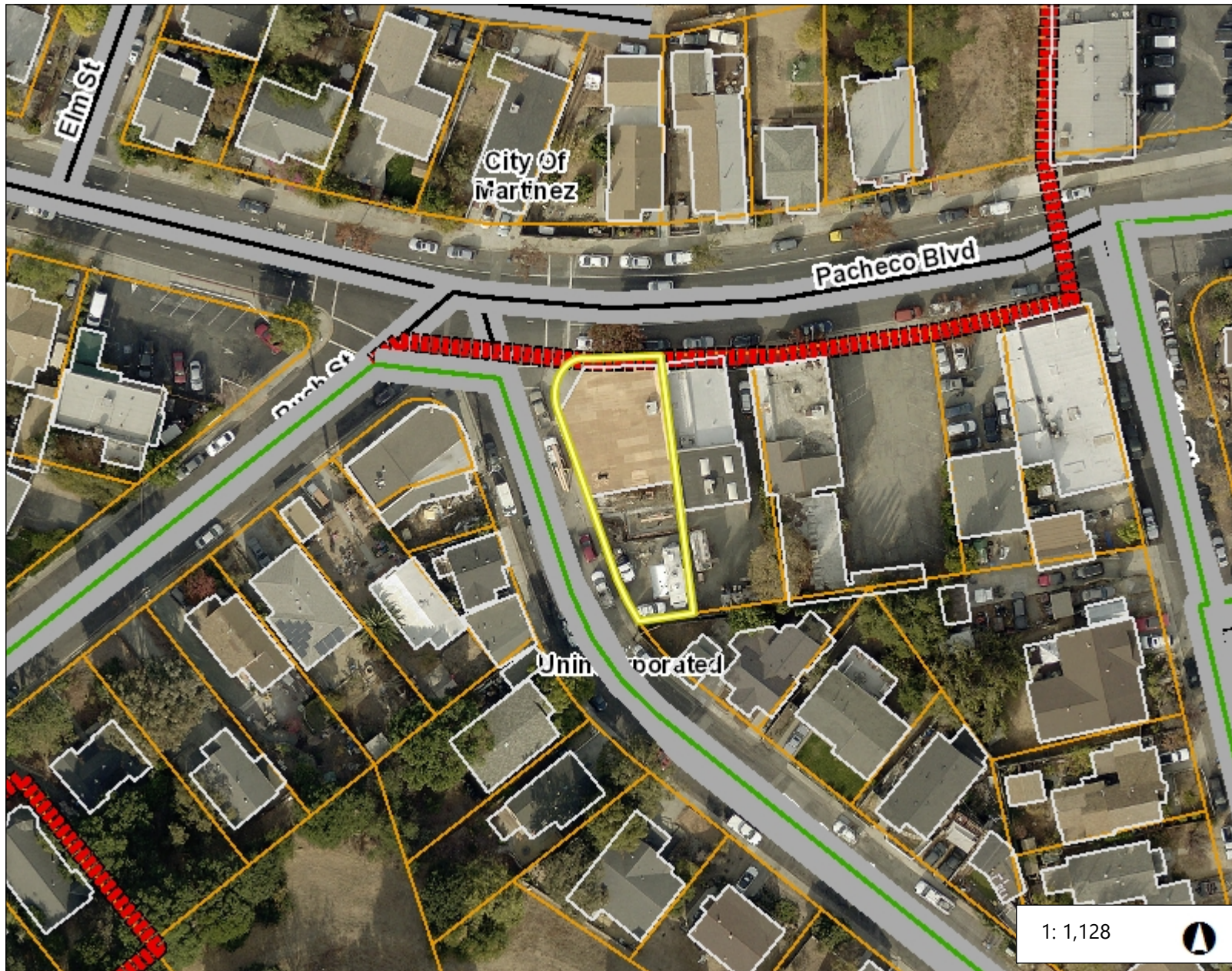
MB 14-282



NOTE: THIS MAP WAS PREPARED FOR ASSESSMENT PURPOSES ONLY. NO LIABILITY IS ASSUMED FOR THE ACCURACY OF THE INFORMATION DELINEATED HEREON. ASSESSOR'S PARCELS MAY NOT COMPLY WITH LOCAL LOT SPLIT OR BUILDING SITE ORDINANCES.

- 011
 - 012
 - 013
 - 014
 - 16
- 4/19/12

Orthophotography



Legend

- Building Outlines
- Maintained Roads
- City Limits
- Unincorporated
- Highways
- Highways Bay Area
- Streets
- Maintained Roads
- Water Bodies
- County Boundary
- Bay Area Counties
- Assessment Parcels

Aerials 2019

- Red: Band_1
- Green: Band_2
- Blue: Band_3

World Imagery

- Low Resolution 15m Imagery
- High Resolution 60cm Imagery
- High Resolution 30cm Imagery
- Citations

Notes

Contra Costa County -DOIT GIS

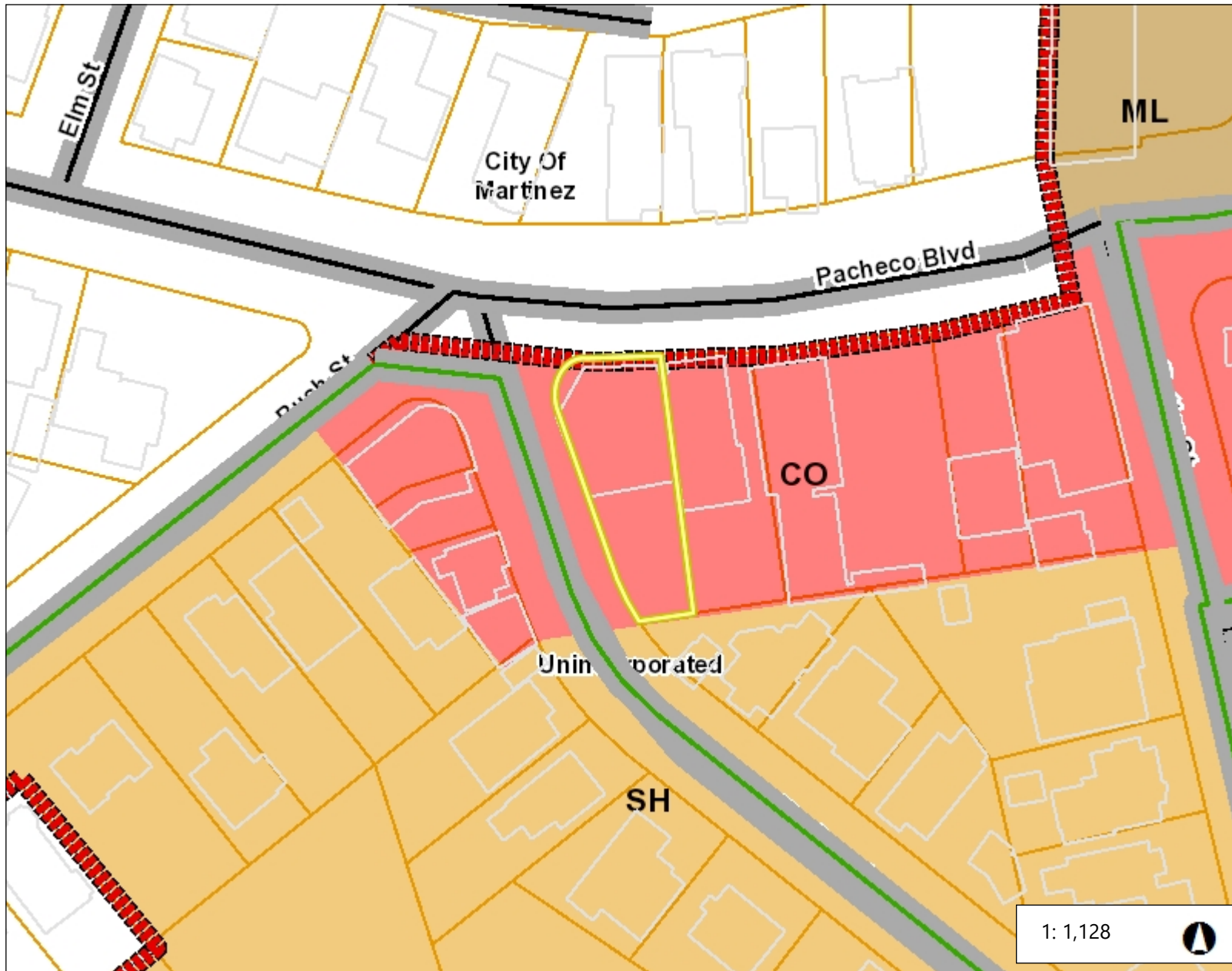
0.0 0 0.02 0.0 Miles

WGS_1984_Web_Mercator_Auxiliary_Sphere

This map is a user generated static output from an Internet mapping site and is for reference only. Data layers that appear on this map may or may not be accurate, current, or otherwise reliable.

THIS MAP IS NOT TO BE USED FOR NAVIGATION

General Plan: Commercial



Legend

- Building Outlines
- Maintained Roads
- City Limits
- Unincorporated
- Highways
- Highways Bay Area
- Streets
- General Plan**
- SV (Single Family Residential - Ver
- SL (Single Family Residential - Low
- SM (Single Family Residential - Me
- SH (Single Family Residential - Hig
- ML (Multiple Family Residential - Lc
- MM (Multiple Family Residential - Iv
- MH (Multiple Family Residential - H
- MV (Multiple Family Residential - V-
- MS (Multiple Family Residential - V-
- CC (Congregate Care/Senior Housi
- MO (Mobile Home)
- M-1 (Parker Avenue Mixed Use)
- M-2 (Downtown/Waterfront Rodeo I
- M-3 (Pleasant Hill BART Mixed Use
- M-4 (Willow Pass Road Mixed Use)
- M-5 (Willow Pass Road Commercie
- M-6 (Bay Point Residential Mixed U
- M-7 (Pittsburg/Bav Point BART Sta

Notes

Contra Costa County -DOIT GIS

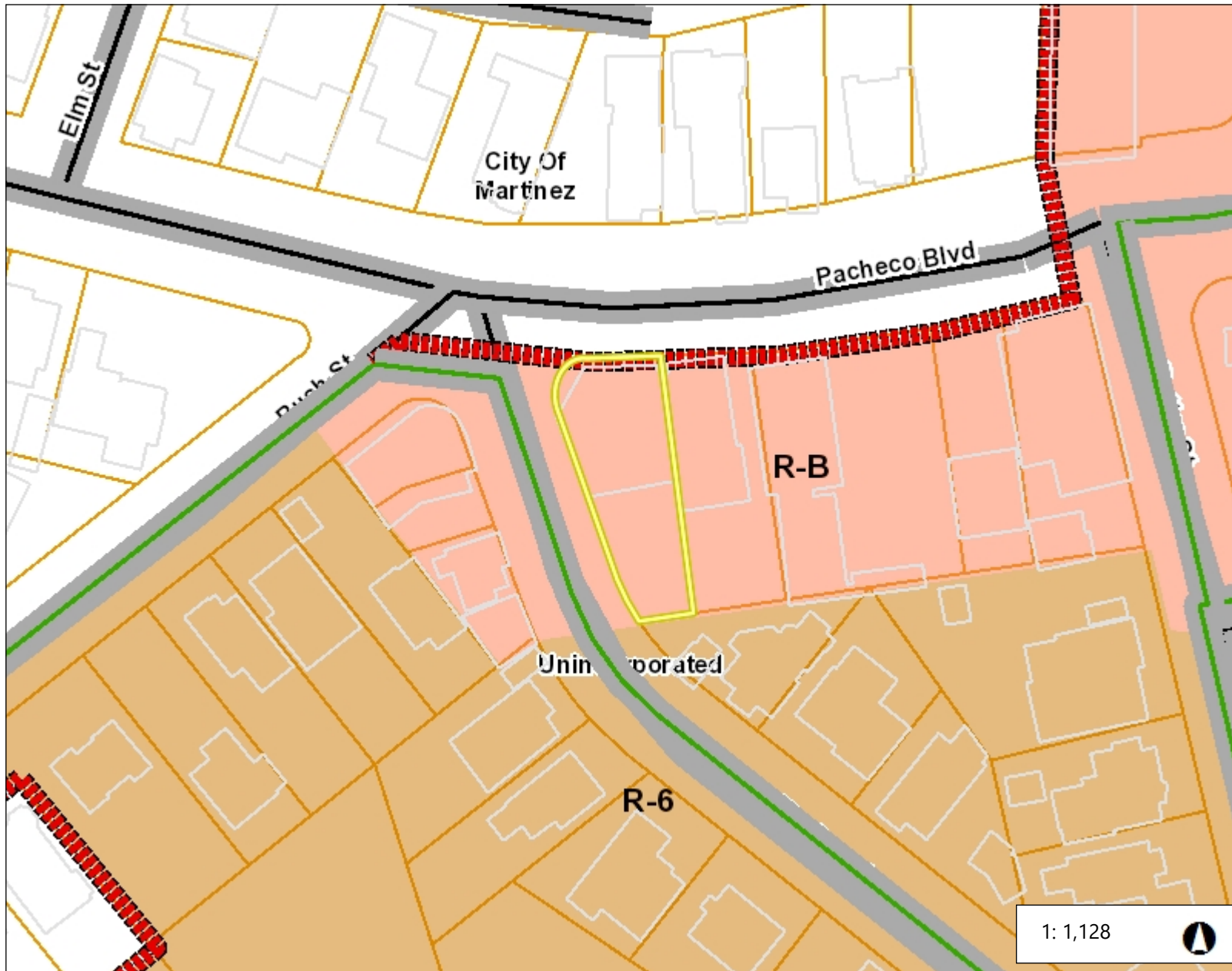
0.0 0 0.02 0.0 Miles

WGS_1984_Web_Mercator_Auxiliary_Sphere

This map is a user generated static output from an Internet mapping site and is for reference only. Data layers that appear on this map may or may not be accurate, current, or otherwise reliable.

THIS MAP IS NOT TO BE USED FOR NAVIGATION

Zoning: R-B



Legend

- Building Outlines
- Maintained Roads
- City Limits
- Unincorporated
- Highways
- Highways Bay Area
- Streets
- Zoning
 - R-6 (Single Family Residential)
 - R-6, -FH -UE (Flood Hazard and A
 - R-6 -SD-1 (Slope Density Hillside I
 - R-6 -TOV -K (Tree Obstruction anc
 - R-6, -UE (Urban Farm Animal Excl
 - R-6 -X (Railroad Corridor Combinir
 - R-7 (Single Family Residential)
 - R-7 -X (Railroad Corridor Combinir
 - R-10 (Single Family Residential)
 - R-10, -UE (Urban Farm Animal Exc
 - R-12 (Single Family Residential)
 - R-15 (Single Family Residential)
 - R-20 (Single Family Residential)
 - R-20, -UE (Urban Farm Animal Exc
 - R-40 (Single Family Residential)
 - R-40, -FH -UE (Flood Hazard and A
 - R-40, -UE (Urban Farm Animal Exc
 - R-65 (Single Family Residential)

1: 1,128



0.0 0 0.02 0.0 Miles

WGS_1984_Web_Mercator_Auxiliary_Sphere

This map is a user generated static output from an Internet mapping site and is for reference only. Data layers that appear on this map may or may not be accurate, current, or otherwise reliable.

THIS MAP IS NOT TO BE USED FOR NAVIGATION

Notes

Contra Costa County -DOIT GIS