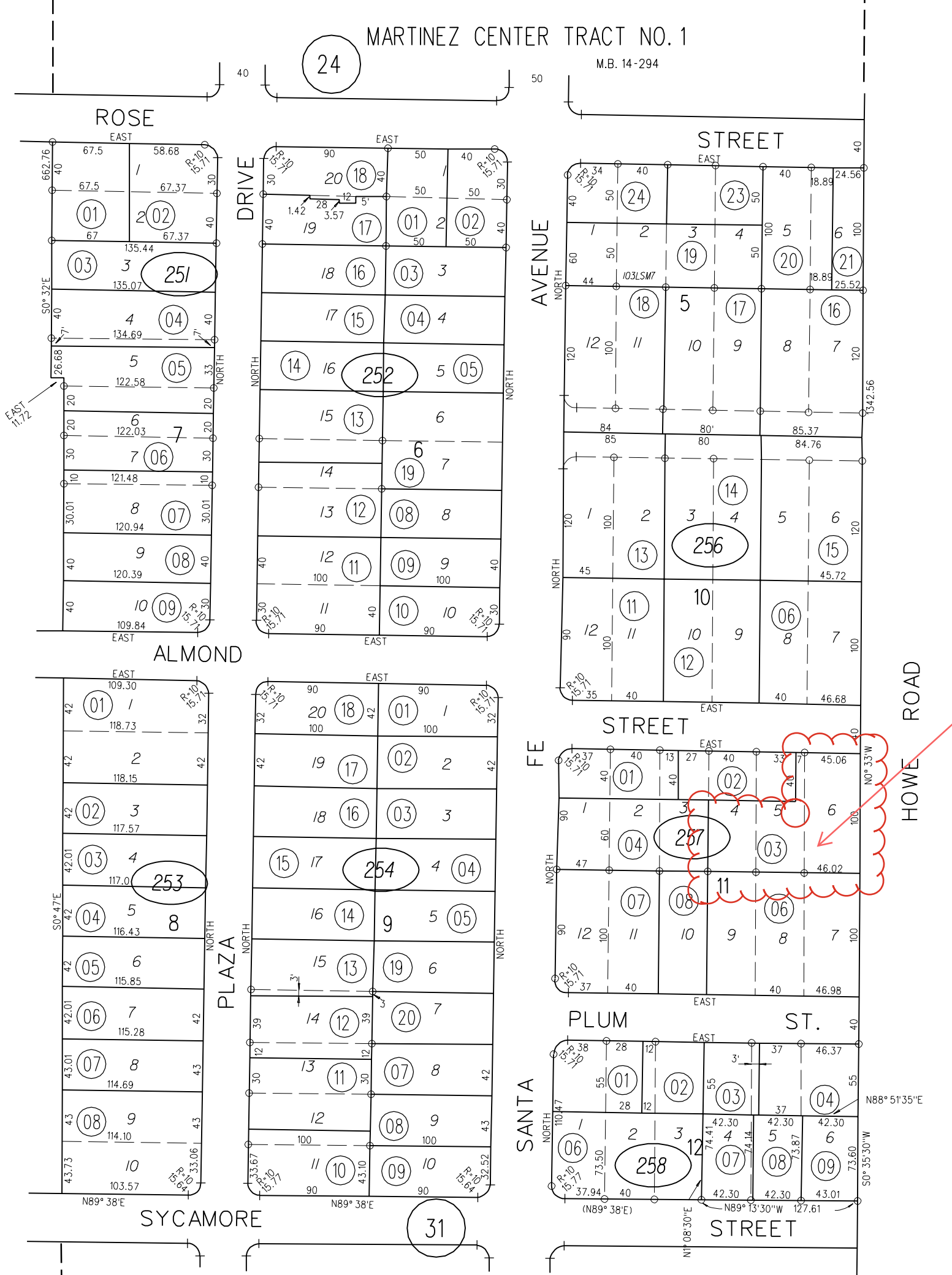


MARTINEZ CENTER TRACT NO. 1

TAX CODE AREA

M.B. 14-294



23

26

24

31

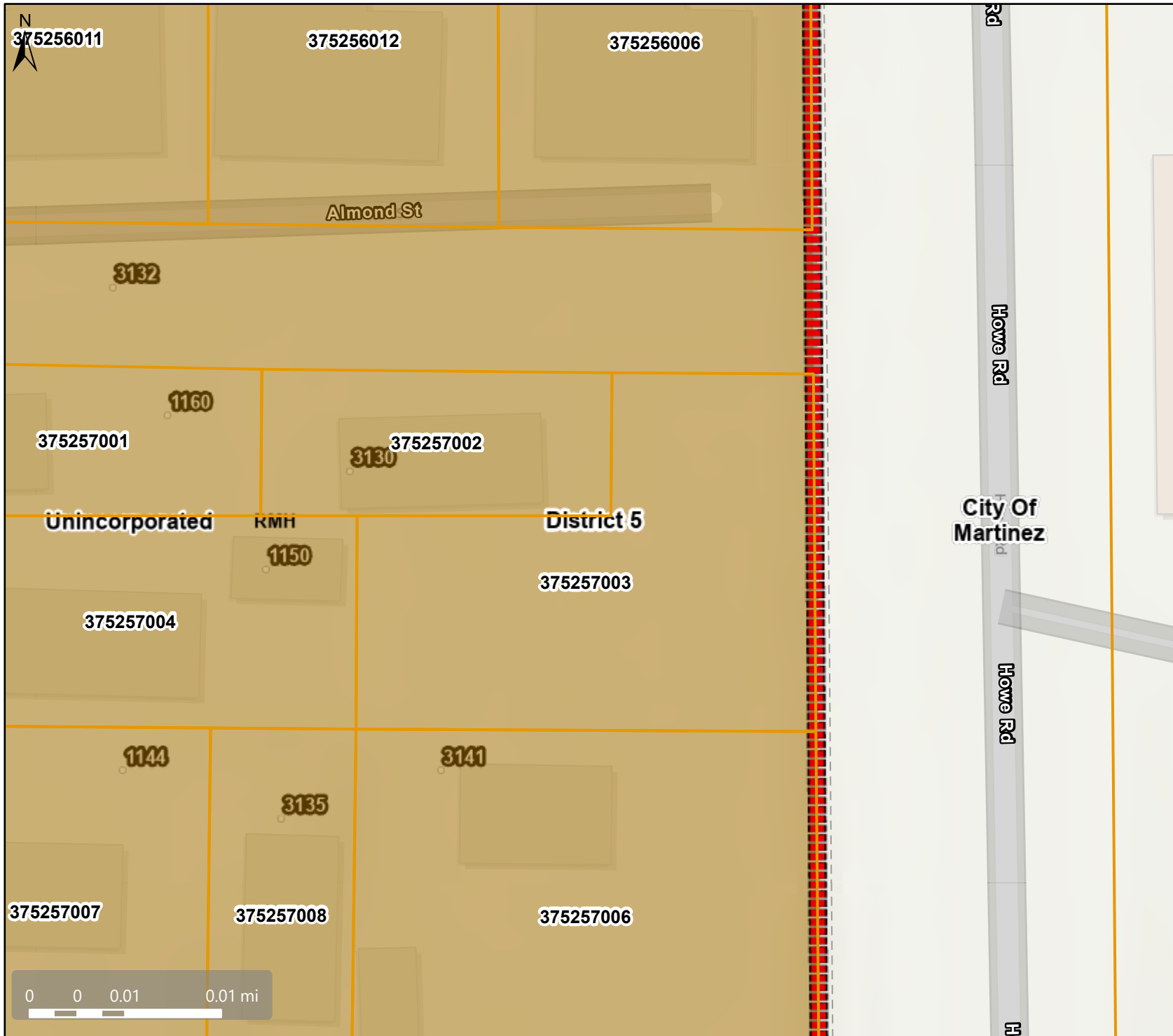


Project Site

PB
377

- 251
- 252
- 253
- 254
- 256
- 257
- 258

General Plan: Residential Medium High Density (RMH)



Map Legend

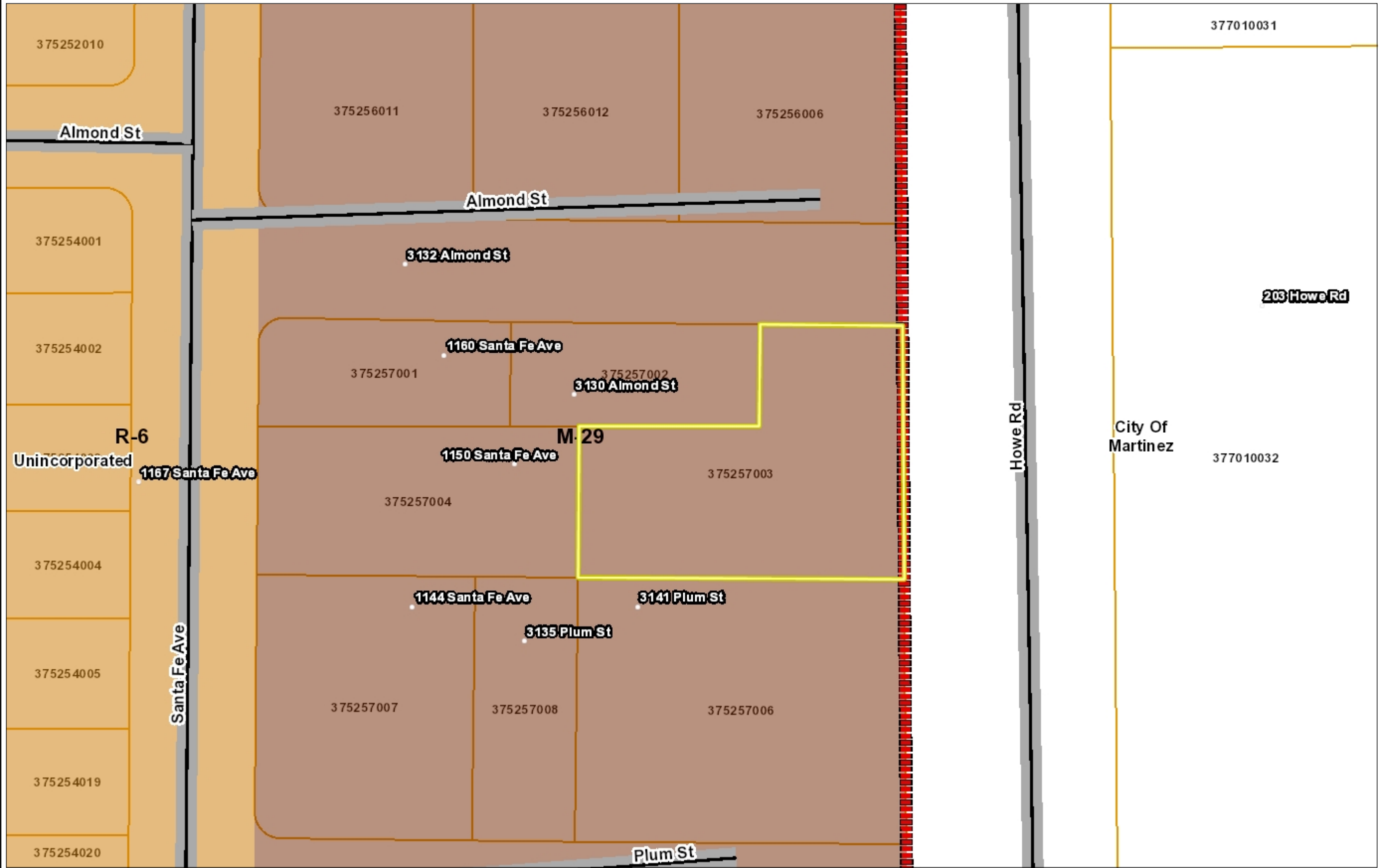
- County Border
- Assessment Parcels
- Planning Layers (DCD)**
- General Plan**
- RMH (Residential Medium-High Density) (17-30 du/na)
- Unincorporated
- City Limits
- Board of Supervisors' Districts
- Base Data**
- Address Points



This map is a user generated, static output from an internet mapping application and is intended for reference use only. Data layers that appear on this map may or may not be accurate, current, or otherwise reliable. THIS MAP IS NOT TO BE USED FOR NAVIGATION. CCMAP is maintained by Contra Costa County Department of Information Technology, County GIS. Data layers contained within the CCMAP application are provided by various Contra Costa County Departments. Please direct all data inquiries to the appropriate department.

Spatial Reference
 PCS: WGS 1984 Web Mercator Auxiliary Sphere
 Datum: WGS 1984

Zoning: M-29



Legend

- City Limits
- Unincorporated
- Address Points
- Highways
- Highways Bay Area
- Streets
- Zoning**
- R-6 (Single Family Residential)
- R-6 -FH (Single Family Residential Combining District)
- R-6, -FH -UE (Single Family Resid Urban Farm Animal Exclusion Com
- R-6 -SD-1 (Single Family Resident Hillside Development Combining Di
- R-6 -TOV -K (Single Family Reside View Ordinance and Kensington Cc
- R-6, -UE (Single Family Residential Exclusion Combining District)
- R-6 -X (Single Family Residential - Combining District)
- R-7 (Single Family Residential)
- R-7 -X (Single Family Residential - Combining District)
- R-10 (Single Family Residential)
- R-10, -UE (Single Family Resident: Exclusion Combining District)
- R-12 (Single Family Residential)
- R-15 (Single Family Residential)
- R-20 (Single Family Residential)
- R-20, -UE (Single Family Resident: Exclusion Combining District)
- R-40 (Single Family Residential)
- R-40 -FH (Single Family Resident: Combining District)
- R-40, -FH -UE (Single Family Resic Urban Farm Animal Exclusion Com
- R-40, -UE (Single Family Resident: Exclusion Combining District)
- R-65 (Single Family Residential)
- R-100 (Single Family Residential)
- D-1 (Two Family Residential)
- D-1 -T (Two Family Residential - Tr District)
- D-1, -UE (Planned Unit - Urban Far Combining District)
- M-12 (Multiple Family Residential)
- M-12 -FH (Multiple Family Resident Combining District)

1: 564



0.0 0 0.01 0.0 Miles

WGS_1984_Web_Mercator_Auxiliary_Sphere

This map is a user generated static output from an Internet mapping site and is for reference only. Data layers that appear on this map may or may not be accurate, current, or otherwise reliable.

THIS MAP IS NOT TO BE USED FOR NAVIGATION

Notes

APN: 375-257-003



Legend

- City Limits
- Unincorporated
- Address Points
- Highways
- Highways Bay Area
- Streets
- County Boundary
- Bay Area Counties
- Assessor Parcels

Aerials 2019

- Red: Band_1
- Green: Band_2
- Blue: Band_3

World Imagery

- Low Resolution 15m Imagery
- High Resolution 60cm Imagery
- High Resolution 30cm Imagery
- Citations

1: 564



0.0 0 0.01 0.0 Miles

WGS_1984_Web_Mercator_Auxiliary_Sphere

This map is a user generated static output from an Internet mapping site and is for reference only. Data layers that appear on this map may or may not be accurate, current, or otherwise reliable.

THIS MAP IS NOT TO BE USED FOR NAVIGATION

Notes

APN: 375-257-003